

TENNESSEE ECONOMIC ANALYSIS

May 2023

NOT TO BE RELEASED BEFORE:

TIME: 1:30 PM CT

DAY: Thursday, June 15, 2023

Prepared by:

Tennessee Department of Labor and Workforce Development

Workforce Insights, Research and Reporting Engine Division

Table of Contents

Economic Indicators

	<u>Page</u>
Briefing Packet Summary	1
Labor Force Estimates Summary - Household Survey	2
Seasonally Adjusted Nonfarm Employment	3
Major Changes in Seasonally Adjusted Nonfarm Employment	3
Business Survey - Not Seasonally Adjusted	4-5

Appendix

Unemployment Rates, 2012 - 2023	6
Hours and Earnings of Production Workers	7

Graphs

Tennessee Unemployment Rates	8
Unemployment Rates - U.S. and Tennessee	8
Goods - Producing Jobs in Tennessee	9
Service - Providing Jobs in Tennessee	9

BRIEFING PACKET SUMMARY

May 2023 pre.

Unemployment Rates

Tennessee	May 2022	April 2023 rev.	May 2023 pre.	Change From:	
				Year Ago	Month Ago
Not Seasonally Adjusted	3.2%	2.6%	3.2%	0.0%	0.6%
Seasonally Adjusted	3.2%	3.3%	3.3%	0.1%	0.0%

United States

Not Seasonally Adjusted	3.4%	3.1%	3.4%	0.0%	0.3%
Seasonally Adjusted	3.6%	3.4%	3.7%	0.1%	0.3%

Hours and Earnings of Production Workers (Manufacturing)

Tennessee	April 2023 rev.	May 2023 pre.	Change
Average Weekly Earnings	\$966.96	\$952.78	-\$14.18
Average Weekly Hours	40.8	40.1	-0.7
Average Hourly Earnings	\$23.70	\$23.76	\$0.06

United States

Average Weekly Earnings	\$1063.49	\$1062.91	-\$0.58
Average Weekly Hours	40.7	40.6	-0.1
Average Hourly Earnings	\$26.13	\$26.18	\$0.05

Summary

Over the month Tennessee's seasonally adjusted unemployment rate remained the same at 3.3%.

Over the past year Tennessee's seasonally adjusted unemployment rate increased from 3.2% to 3.3%.

Over the year, nonfarm employment increased by 75,000 jobs. The largest increases were in Education & Health Services, Leisure & Hospitality, and Government.

Over the month, total nonfarm employment increased by 2,700 jobs. The largest increases were in Health Care & Social Assistance, Arts, Entertainment, & Recreation, and Local Government.

LABOR FORCE ESTIMATES SUMMARY

HOUSEHOLD SURVEY

Tennessee* Not Seasonally Adjusted	May 2022	Revised April 2023	Preliminary May 2023	Change from April 2022 to April 2023		Change from March 2023 to April 2023	
Civilian Labor Force	3,375,814	3,355,638	3,370,833	-4,981	-0.1%	15,195	0.5%
Labor Force Participation Rate	60.5%	59.2%	59.4%	-1.1	percentage points	0.2	percentage points
Employment	3,268,905	3,268,573	3,261,405	-7,500	-0.2%	-7,168	-0.2%
Unemployment	106,909	87,065	109,428	2,519	2.4%	22,363	25.7%
Unemployment Rate	3.2%	2.6%	3.2%	0.0	percentage points	0.6	percentage points

Seasonally Adjusted

Civilian Labor Force	3,381,397	3,347,540	3,359,776	-21,621	-0.6%	12,236	0.4%
Labor Force Participation Rate	60.6%	59.1%	59.2%	-1.4	percentage points	0.1	percentage points
Employment	3,271,927	3,237,369	3,250,027	-21,900	-0.7%	12,658	0.4%
Unemployment	109,470	110,171	109,749	279	0.3%	-422	-0.4%
Unemployment Rate	3.2%	3.3%	3.3%	0.1	percentage points	0.0	percentage points

United States** Not Seasonally Adjusted	May 2022	Revised April 2023	Preliminary May 2023	Change from April 2022 to April 2023		Change from March 2023 to April 2023	
Civilian Labor Force	164,157,000	166,221,000	166,702,000	2,545,000	1.6%	481,000	0.3%
Labor Force Participation Rate	62.3%	62.4%	62.5%	0.2	percentage points	0.1	percentage points
Employment	158,609,000	161,075,000	161,002,000	2,393,000	1.5%	-73,000	0.0%
Unemployment	5,548,000	5,146,000	5,700,000	152,000	2.7%	554,000	10.8%
Unemployment Rate	3.4%	3.1%	3.4%	0.0	percentage points	0.3	percentage points

Seasonally Adjusted

Civilian Labor Force	164,278,000	166,688,000	166,818,000	2,540,000	1.5%	130,000	0.1%
Labor Force Participation Rate	62.3%	62.6%	62.6%	0.3	percentage points	0.0	percentage points
Employment	158,299,000	161,031,000	160,721,000	2,422,000	1.5%	-310,000	-0.2%
Unemployment	5,979,000	5,657,000	6,097,000	118,000	2.0%	440,000	7.8%
Unemployment Rate	3.6%	3.4%	3.7%	0.1	percentage points	0.3	percentage points

* Error range for Tennessee estimates cannot be computed

** Error range for U.S. estimates is +/- 0.2%

Seasonally Adjusted Nonfarm Employment

(numbers in thousands)

Annual Change Monthly Change

	May 2022	April 2023 rev.	May 2023 pre.	May 2022 to May 2023		April 2023 to May 2023	
				Net Chg.	% chg.	Net Chg.	% chg.
				Total Non-Farm	3,237.1	3,309.4	3,312.1
Mining, Logging and Construction	149.7	155.7	155.5	5.8	3.9%	-0.2	-0.1%
Mining and Logging	4.5	4.4	4.3	-0.2	-4.4%	-0.1	-2.3%
Construction	145.2	151.3	151.2	6.0	4.1%	-0.1	-0.1%
Manufacturing	363.8	368.9	369.8	6.0	1.6%	0.9	0.2%
Durable Goods Manufacturing	231.6	236.8	237.2	5.6	2.4%	0.4	0.2%
Non-Durable Goods Manufacturing	132.2	132.1	132.6	0.4	0.3%	0.5	0.4%
Trade, Transportation, and Utilities	676.6	681.4	681.5	4.9	0.7%	0.1	0.0%
Wholesale Trade	129.4	134.8	133.9	4.5	3.5%	-0.9	-0.7%
Retail Trade	340.4	341.5	342.0	1.6	0.5%	0.5	0.1%
Transportation, Warehousing, and Utilities	206.8	205.1	205.6	-1.2	-0.6%	0.5	0.2%
Information	54.0	55.7	55.8	1.8	3.3%	0.1	0.2%
Financial Activities	175.1	174.3	174.4	-0.7	-0.4%	0.1	0.1%
Finance and Insurance	132.6	131.1	131.1	-1.5	-1.1%	0.0	0.0%
Real Estate, Rental, and Leasing	42.5	43.2	43.3	0.8	1.9%	0.1	0.2%
Professional and Business Services	464.6	471.4	469.5	4.9	1.1%	-1.9	-0.4%
Professional, Scientific, and Technical Services	168.5	178.2	178.0	9.5	5.6%	-0.2	-0.1%
Management of Companies and Enterprises	54.0	54.7	55.1	1.1	2.0%	0.4	0.7%
Administrative, Support, and Waste Services	242.1	238.5	236.4	-5.7	-2.4%	-2.1	-0.9%
Education and Health Services	448.8	466.0	469.7	20.9	4.7%	3.7	0.8%
Educational Services	63.5	65.9	64.6	1.1	1.7%	-1.3	-2.0%
Health Care and Social Assistance	385.3	400.1	405.1	19.8	5.1%	5.0	1.2%
Leisure and Hospitality	340.4	360.3	360.0	19.6	5.8%	-0.3	-0.1%
Arts, Entertainment, and Recreation	42.8	45.8	46.5	3.7	8.6%	0.7	1.5%
Accommodation and Food Services	297.6	314.5	313.5	15.9	5.3%	-1.0	-0.3%
Other Services	125.4	128.5	128.7	3.3	2.6%	0.2	0.2%
Government	438.7	447.2	447.2	8.5	1.9%	0.0	0.0%
Federal Government	52.2	54.7	55.1	2.9	5.6%	0.4	0.7%
State Government	94.3	95.2	94.1	-0.2	-0.2%	-1.1	-1.2%
Local Government	292.2	297.3	298.0	5.8	2.0%	0.7	0.2%

Major Changes in Seasonally Adjusted Nonfarm Employment (in thousands)

I. Monthly Change (from April 2023 rev. to May 2023 pre.)

	April 2023 rev.	May 2023 pre.	Change
A. Major Employment Increases			
Health Care and Social Assistance	400.1	405.1	5.0
Arts, Entertainment, and Recreation	45.8	46.5	0.7
Local Government	297.3	298.0	0.7
B. Major Employment Decreases			
Administrative, Support, and Waste Services	238.5	236.4	-2.1
Educational Services	65.9	64.6	-1.3
State Government	95.2	94.1	-1.1

II. Yearly Change (from May 2022 to May 2023 pre.)

	May 2022	May 2023 pre.	Change
A. Major Employment Increases			
Education and Health Services	448.8	469.7	20.9
Leisure and Hospitality	340.4	360.0	19.6
Government	438.7	447.2	8.5
B. Major Employment Decreases			
Administrative, Support, and Waste Services	242.1	236.4	-5.7
Finance and Insurance	132.6	131.1	-1.5
Transportation, Warehousing, and Utilities	206.8	205.6	-1.2

BUSINESS SURVEY - Not Seasonally Adjusted

Estimated Nonfarm Employment by Industry*

(numbers in thousands)	May 2022	April 2023 rev.	May 2023 pre.	Annual Change		Monthly Change	
				May 2022 to May 2023		April 2023 to May 2023	
				Net Chg.	% chg.	Net Chg.	% chg.
Total Non-Farm	3,239.1	3,308.4	3,309.3	70.2	2.2%	0.9	0.0%
Total Private	2,799.7	2,853.5	2,859.1	59.4	2.1%	5.6	0.2%
Goods Producing	514.4	524.3	525.1	10.7	2.1%	0.8	0.2%
Mining, Logging and Construction	150.3	155.6	156.3	6.0	4.0%	0.7	0.4%
Manufacturing	364.1	368.7	368.8	4.7	1.3%	0.1	0.0%
Durable Goods Manufacturing	232.1	236.5	236.1	4.0	1.7%	-0.4	-0.2%
Wood Products	14.2	14.1	14.0	-0.2	-1.4%	-0.1	-0.7%
Non-Metallic Mineral Products	14.9	15.2	15.2	0.3	2.0%	0.0	0.0%
Primary Metal Products	11.2	11.1	11.0	-0.2	-1.8%	-0.1	-0.9%
Fabricated Metal Products	41.2	41.8	41.8	0.6	1.5%	0.0	0.0%
Machinery Manufacturing	24.8	24.6	24.3	-0.5	-2.0%	-0.3	-1.2%
Computer and Electronic Products	6.7	6.9	7.0	0.3	4.5%	0.1	1.4%
Electrical Equipment and Appliances	19.5	18.6	18.5	-1.0	-5.1%	-0.1	-0.5%
Transportation Equipment	72.6	77.5	77.6	5.0	6.9%	0.1	0.1%
Furniture and Related Products	9.8	9.4	9.4	-0.4	-4.1%	0.0	0.0%
Miscellaneous Durable Manufacturing	17.2	17.3	17.3	0.1	0.6%	0.0	0.0%
Non-Durable Goods Manufacturing	132.0	132.2	132.7	0.7	0.5%	0.5	0.4%
Food Manufacturing	39.1	40.1	40.2	1.1	2.8%	0.1	0.2%
Beverage and Tobacco Products	9.2	9.3	9.5	0.3	3.3%	0.2	2.2%
Paper Manufacturing	13.5	13.3	13.4	-0.1	-0.7%	0.1	0.8%
Printing and Related Support Activities	8.2	8.3	8.4	0.2	2.4%	0.1	1.2%
Chemical Manufacturing	26.5	26.8	26.8	0.3	1.1%	0.0	0.0%
Plastics and Rubber Products	25.5	24.7	24.9	-0.6	-2.4%	0.2	0.8%
Service Providing	2,724.7	2,784.1	2,784.2	59.5	2.2%	0.1	0.0%
Private Service Providing (Service Providing Less Government)	2,285.3	2,329.2	2,334.0	48.7	2.1%	4.8	0.2%
Trade, Transportation, and Utilities	673.1	676.5	675.0	1.9	0.3%	-1.5	-0.2%
Wholesale Trade	129.5	134.7	133.2	3.7	2.9%	-1.5	-1.1%
Merchant wholesalers, Durable Goods	76.3	80.0	79.0	2.7	3.5%	-1.0	-1.3%
Merchant wholesalers, Non-Durable Goods	45.5	46.8	46.4	0.9	2.0%	-0.4	-0.9%
Wholesale Electronic Markets	7.7	7.9	7.8	0.1	1.3%	-0.1	-1.3%
Retail Trade	340.4	339.6	340.5	0.1	0.0%	0.9	0.3%
Motor Vehicle and Parts Dealers	47.9	47.2	47.2	-0.7	-1.5%	0.0	0.0%
Furniture and Home Furnishings Stores	10.1	19.0	19.0	8.9	88.1%	0.0	0.0%
Building Material and Garden Supply Stores	34.8	33.8	34.0	-0.8	-2.3%	0.2	0.6%
Food and Beverage Stores	58.3	60.0	59.9	1.6	2.7%	-0.1	-0.2%
Health and Personal Care Stores	26.1	25.0	24.9	-1.2	-4.6%	-0.1	-0.4%
Gasoline Stations	24.6	26.3	26.4	1.8	7.3%	0.1	0.4%
Clothing and Clothing Accessories Stores	21.4	22.8	22.9	1.5	7.0%	0.1	0.4%
Sporting Goods, Hobby, Book, and Music Stores	30.3	30.8	30.8	0.5	1.7%	0.0	0.0%
General Merchandise Stores	76.2	74.7	75.4	-0.8	-1.0%	0.7	0.9%
Transportation, Warehousing, and Utilities	203.2	202.2	201.3	-1.9	-0.9%	-0.9	-0.4%
Utilities	4.1	4.2	4.3	0.2	4.9%	0.1	2.4%
Transportation and Warehousing	199.1	198.0	197.0	-2.1	-1.1%	-1.0	-0.5%
Information	54.0	55.2	55.5	1.5	2.8%	0.3	0.5%
Financial Activities	175.1	173.6	174.9	-0.2	-0.1%	1.3	0.7%
Finance and Insurance	132.5	130.6	130.9	-1.6	-1.2%	0.3	0.2%
Real Estate, Rental, and Leasing	42.6	43.0	44.0	1.4	3.3%	1.0	2.3%
Professional and Business Services	462.3	469.9	467.3	5.0	1.1%	-2.6	-0.6%
Professional, Scientific, and Technical Services	167.1	179.7	177.4	10.3	6.2%	-2.3	-1.3%
Management of Companies and Enterprises	53.7	54.3	55.0	1.3	2.4%	0.7	1.3%
Administrative, Support, and Waste Services	241.5	235.9	234.9	-6.6	-2.7%	-1.0	-0.4%
Education and Health Services	447.2	467.3	468.7	21.5	4.8%	1.4	0.3%
Educational Services	61.7	68.2	64.2	2.5	4.1%	-4.0	-5.9%
Health Care and Social Assistance	385.5	399.1	404.5	19.0	4.9%	5.4	1.4%
Ambulatory Health Care Services	166.0	171.9	174.9	8.9	5.4%	3.0	1.7%
Hospitals	110.6	114.8	115.5	4.9	4.4%	0.7	0.6%
Nursing and Residential Care Facilities	56.1	58.4	59.0	2.9	5.2%	0.6	1.0%
Social Assistance	52.8	54.0	55.1	2.3	4.4%	1.1	2.0%
Leisure and Hospitality	347.6	357.9	363.3	15.7	4.5%	5.4	1.5%
Arts, Entertainment, and Recreation	45.2	43.9	48.0	2.8	6.2%	4.1	9.3%
Accommodation and Food Services	302.4	314.0	315.3	12.9	4.3%	1.3	0.4%
Accommodation	37.1	38.5	38.1	1.0	2.7%	-0.4	-1.0%
Food Services and Drinking Places	265.3	275.5	277.2	11.9	4.5%	1.7	0.6%

Other Services	126.0	128.8	129.3	3.3	2.6%	0.5	0.4%
Government	439.4	454.9	450.2	10.8	2.5%	-4.7	-1.0%
Federal Government	52.0	54.5	55.0	3.0	5.8%	0.5	0.9%
State Government	92.1	99.2	92.8	0.7	0.8%	-6.4	-6.5%
State Government Educational Services	52.3	58.6	52.1	-0.2	-0.4%	-6.5	-11.1%
State Government Excluding Education	39.8	40.6	40.7	0.9	2.3%	0.1	0.2%
Local Government	295.3	301.2	302.4	7.1	2.4%	1.2	0.4%
Local Government Educational Services	148.0	150.8	150.8	2.8	1.9%	0.0	0.0%
Local Government Excluding Education	147.3	150.4	151.6	4.3	2.9%	1.2	0.8%

* Estimates include all full- and part-time nonagricultural wage and salary employees who worked during, or received pay for, any part of the pay period which include the 12th of the month. This is a count of jobs by place of work. Agricultural workers, proprietors, self-employed persons, workers in private households, and unpaid family workers are excluded.

Unemployment Rates, 2012-2023

U.S. & Tennessee, Seasonally Adjusted & Not Seasonally Adjusted

	2012				2013				2014				2015			
	U.S.		TN		U.S.		TN		U.S.		TN		U.S.		TN	
	Seas. Adj.	Not Seas. Adj.	Seas. Adj.	Not Seas. Adj.	Seas. Adj.	Not Seas. Adj.	Seas. Adj.	Not Seas. Adj.	Seas. Adj.	Not Seas. Adj.	Seas. Adj.	Not Seas. Adj.	Seas. Adj.	Not Seas. Adj.	Seas. Adj.	Not Seas. Adj.
Jan	8.3	8.8	8.2	8.6	8.0	8.5	8.0 -	8.7 *	6.6	7.0	6.9 *	7.1 *	5.7	6.1	6.1 *	6.6 *
Feb	8.3	8.7	8.1	8.4	7.7	8.1	8.0 *	8.2 *	6.7	7.0	6.8 *	7.1 *	5.5	5.8	6.1 *	6.2 *
Mar	8.2	8.4	8.0	8.1	7.5	7.6	8.0 *	7.9 *	6.7	6.8	6.8 *	6.9 *	5.4	5.6	6.0 *	5.9 *
Apr	8.2	7.7	8.0	7.5	7.6	7.1	8.0 *	7.4 *	6.2	5.9	6.7 *	6.0 *	5.4	5.1	5.9 *	5.3 *
May	8.2	7.9	8.0	7.7	7.5	7.3	7.9 *	7.6 *	6.3	6.1	6.7 *	6.3 *	5.6	5.3	5.8 *	5.6 *
Jun	8.2	8.4	8.0	8.6 *	7.5	7.8	7.9 *	8.5 *	6.1	6.3	6.7 *	7.1 *	5.3	5.5	5.7 *	6.2 *
Jul	8.2	8.6	8.0	8.6 -	7.3	7.7	7.8 *	8.2 *	6.2	6.5	6.6 *	7.3 *	5.2	5.6	5.5 *	6.0 *
Aug	8.1	8.2	7.9	8.0	7.2	7.3	7.7 *	7.7 *	6.1	6.3	6.6 *	6.9 *	5.1	5.2	5.4 *	5.5 *
Sep	7.8	7.6	7.8 -	7.5	7.2	7.0	7.6 *	7.5 *	5.9	5.7	6.5 *	6.4 *	5.0	4.9	5.3 *	5.2 *
Oct	7.8	7.5	7.8 -	7.6 *	7.2	7.0	7.4 *	7.5 *	5.7	5.5	6.4 *	6.1 *	5.0	4.8	5.1 *	5.0 *
Nov	7.7	7.4	7.8 *	7.3	6.9	6.6	7.3 *	6.9 *	5.8	5.5	6.3 *	6.1 *	5.1	4.8	5.0	4.9 *
Dec	7.9	7.6	7.9 -	7.7 *	6.7	6.5	7.1 *	6.8 *	5.6	5.4	6.2 *	5.9 *	5.0	4.8	4.9	4.7
Avg	8.1		8.0		7.4		7.8 *		6.2		6.6 *		5.3		5.6 *	

	2016				2017				2018				2019			
	U.S.		TN		U.S.		TN		U.S.		TN		U.S.		TN	
	Seas. Adj.	Not Seas. Adj.	Seas. Adj.	Not Seas. Adj.	Seas. Adj.	Not Seas. Adj.	Seas. Adj.	Not Seas. Adj.	Seas. Adj.	Not Seas. Adj.	Seas. Adj.	Not Seas. Adj.	Seas. Adj.	Not Seas. Adj.	Seas. Adj.	Not Seas. Adj.
Jan	4.8	5.3	4.8 -	5.0	4.7	5.1	4.6	5.0	4.0	4.5	3.5	3.8	4.0	4.4	3.5	3.8
Feb	4.9	5.2	4.7	4.8	4.6	4.9	4.4	4.6	4.1	4.4	3.5	3.6	3.8	4.1	3.4	3.4
Mar	5.0	5.1	4.7	4.7	4.4	4.6	4.2	4.1	4.0	4.1	3.5	3.5	3.8	3.9	3.4	3.5
Apr	5.1	4.7	4.6	4.3	4.4	4.1	3.9	3.4	4.0	3.7	3.5	3.1	3.6	3.3	3.3	2.9
May	4.8	4.5	4.7	4.2	4.4	4.1	3.7	3.2	3.8	3.6	3.5	3.1	3.7	3.4	3.3	3.1
Jun	4.9	5.1	4.7	5.2 *	4.3	4.5	3.6	4.1	4.0	4.2	3.5	4.1	3.6	3.8	3.2	3.8 -
Jul	4.8	5.1	4.8 -	5.2 *	4.3	4.6	3.5	3.9	3.8	4.1	3.5	3.9	3.7	4.0	3.2	3.7
Aug	4.9	5.0	4.8	5.0 -	4.4	4.5	3.4	3.6	3.8	3.9	3.5	3.6	3.7	3.8	3.2	3.3
Sep	5.0	4.8	4.9	4.9 *	4.3	4.1	3.4	3.2	3.7	3.6	3.5	3.4	3.5	3.3	3.3	3.1
Oct	4.9	4.7	4.9 -	4.7 -	4.2	3.9	3.4	3.3	3.8	3.5	3.5	3.4	3.6	3.3	3.4	3.3 -
Nov	4.7	4.4	4.8	4.5 *	4.2	3.9	3.4	3.2	3.8	3.5	3.5	3.1	3.6	3.3	3.4	3.1
Dec	4.7	4.5	4.7 -	4.5 -	4.1	3.9	3.5	3.2	3.9	3.7	3.5	3.2	3.6	3.4	3.5	3.3
Avg	4.9		4.7		4.4		3.7		3.9		3.5		3.7		3.3	

	2020				2021				2022				2023			
	U.S.		TN		U.S.		TN		U.S.		TN		U.S.		TN	
	Seas. Adj.	Not Seas. Adj.	Seas. Adj.	Not Seas. Adj.	Seas. Adj.	Not Seas. Adj.	Seas. Adj.	Not Seas. Adj.	Seas. Adj.	Not Seas. Adj.	Seas. Adj.	Not Seas. Adj.	Seas. Adj.	Not Seas. Adj.	Seas. Adj.	Not Seas. Adj.
Jan	3.5	4.0	3.5 -	3.7	6.3	6.8	5.4	5.6	4.0	4.4	3.5	3.7	3.4	3.9	3.5 *	3.5
Feb	3.5	3.8	3.5 -	3.4	6.2	6.6	5.3	5.3	3.8	4.1	3.4	3.5	3.6	3.9	3.5	3.6
Mar	4.4	4.5	3.5	3.9	6.1	6.2	5.1	5.2	3.6	3.8	3.3	3.2	3.5	3.6	3.4	3.1
Apr	14.7	14.4	15.8 *	15.0 *	6.1	5.7	5.0	4.7	3.6	3.3	3.3	3.1	3.4	3.1	3.3	2.6
May	13.2	13.0	12.1	11.8	5.8	5.5	4.8	4.6	3.6	3.4	3.2	3.2	3.7	3.4	3.3	3.2
Jun	11.0	11.2	10.1	10.8	5.9	6.1	4.6	5.6	3.6	3.8	3.2	4.0 *				
Jul	10.2	10.5	9.0	10.1	5.4	5.7	4.4	4.9	3.5	3.8	3.3	3.7				
Aug	8.4	8.5	7.7	7.8	5.2	5.3	4.2	4.4	3.7	3.8	3.3	3.6				
Sep	7.9	7.7	7.1	6.9	4.8	4.6	4.0	3.8	3.5	3.3	3.4	3.2				
Oct	6.9	6.6	6.4	6.0	4.5	4.3	3.8	3.5	3.7	3.4	3.5	3.4 -				
Nov	6.7	6.4	6.0	5.4	4.2	3.9	3.7	3.2	3.6	3.4	3.5	3.2				
Dec	6.7	6.5	5.7	5.4	3.9	3.7	3.6	3.1	3.5	3.3	3.5 -	2.9				
Avg	8.1		7.5		5.3		4.5		3.6		3.4					

* Designates when Tennessee's unemployment rate is greater than the U.S. rate

- Designates when Tennessee's unemployment rate is equal to the U.S. rate

HOURS AND EARNINGS OF PRODUCTION WORKERS

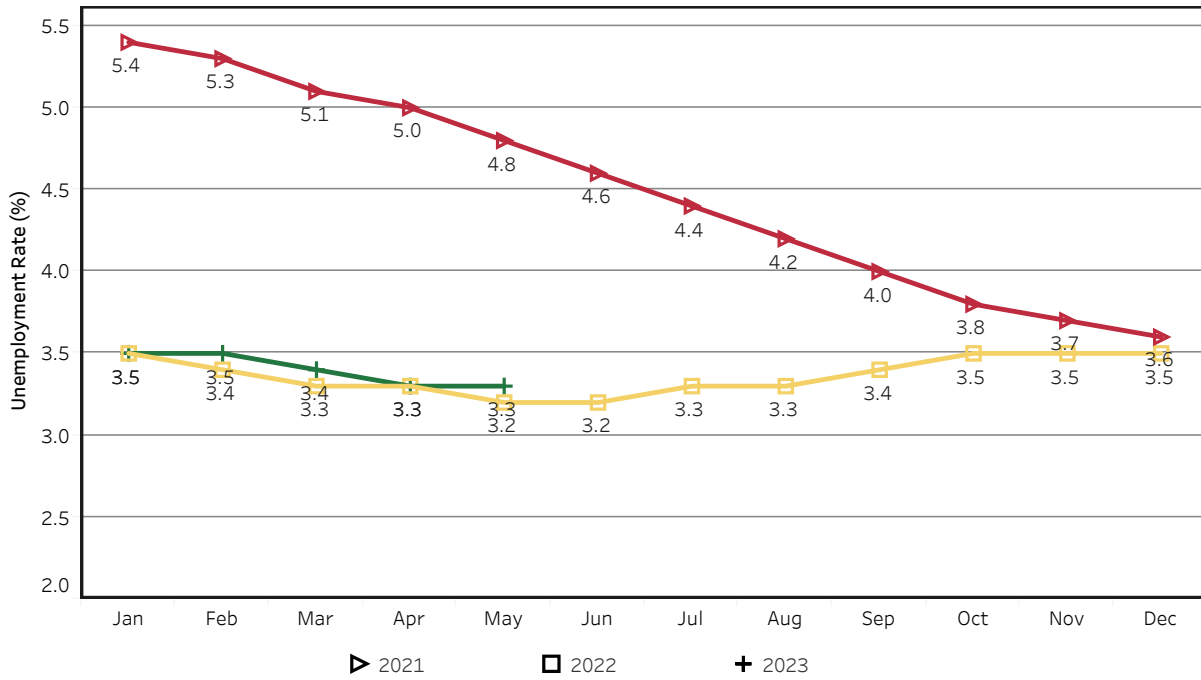
	Average Weekly Earning			Average Weekly Hours			Average Hourly Earning		
	May 2022	April 2023	May 2023	May 2022	April 2023	May 2023	May 2022	April 2023	May 2023
Manufacturing	\$978.97	\$966.96	\$952.78	43.9	40.8	40.1	\$22.30	\$23.70	\$23.76
Durable Goods	1029.89	1016.39	1004.04	43.9	41.3	41.2	23.46	24.61	24.37
Non-Durable Goods	889.58	882.80	862.58	43.8	40.0	38.1	20.31	22.07	22.64

HOURS AND EARNINGS OF PRODUCTION WORKERS - ALL MANUFACTURING

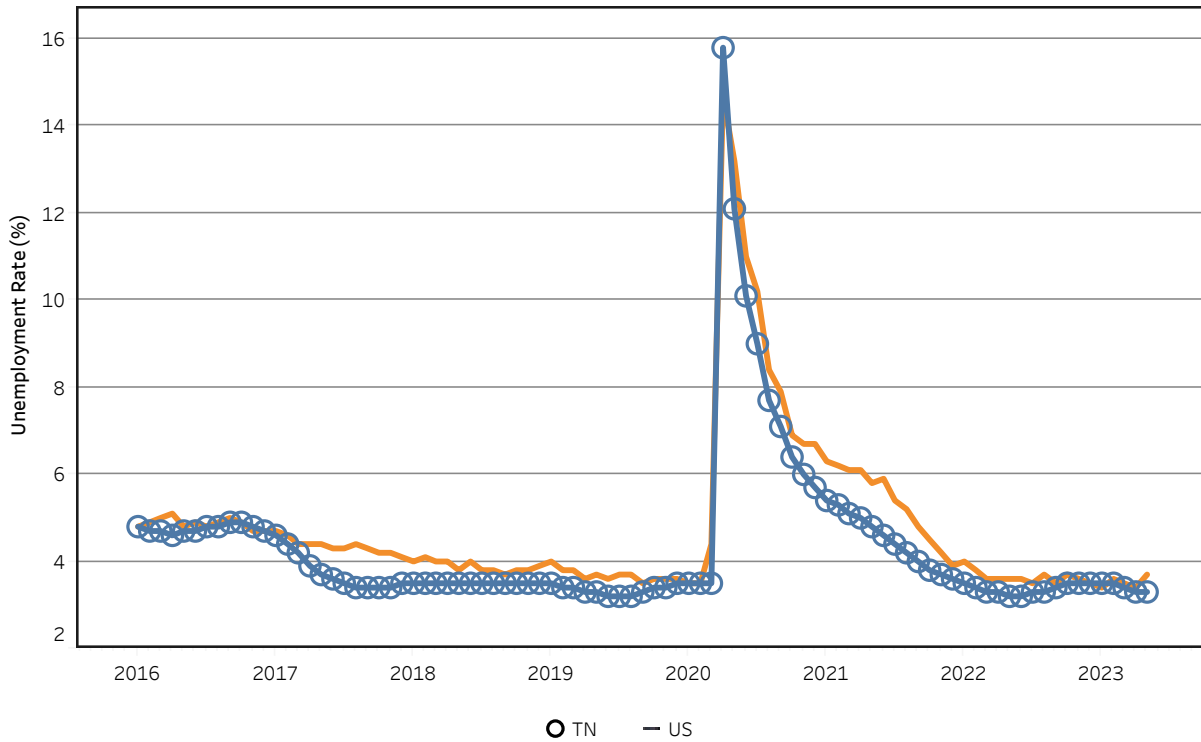
(ranked April 2023 preliminary average weekly earnings; May 2023 will be available later this month)

	Average Weekly Earning			Average Weekly Hours			Average Hourly Earning		
	April 2022	April 2023	Percent Change	April 2022	April 2023	Percent Change	April 2022	April 2023	Percent Change
FLORIDA	\$1080.6	\$1174.78	8.7%	41.20	41.60	1.0%	\$26.23	\$28.24	7.7%
KENTUCKY	\$971.60	\$999.90	2.9%	40.00	40.40	1.0%	\$24.29	\$24.75	1.9%
ALABAMA	\$956.66	\$995.80	4.1%	41.20	41.70	1.2%	\$23.22	\$23.88	2.8%
VIRGINIA	\$885.77	\$984.55	11.2%	40.80	40.60	-0.5%	\$21.71	\$24.25	11.7%
GEORGIA	\$947.78	\$977.74	3.2%	40.80	41.50	1.7%	\$23.23	\$23.56	1.4%
TENNESSEE	\$958.18	\$959.71	0.2%	43.20	40.70	-5.8%	\$22.18	\$23.58	6.3%
SOUTH CAROLINA	\$979.40	\$942.10	-3.8%	41.50	38.50	-7.2%	\$23.60	\$24.47	3.7%
NORTH CAROLINA	\$876.46	\$871.97	-0.5%	42.30	40.50	-4.3%	\$20.72	\$21.53	3.9%
ARKANSAS	\$809.13	\$838.03	3.6%	39.80	37.80	-5.0%	\$20.33	\$22.17	9.1%
MISSISSIPPI	\$814.41	\$835.16	2.5%	38.80	40.70	4.9%	\$20.99	\$20.52	-2.2%

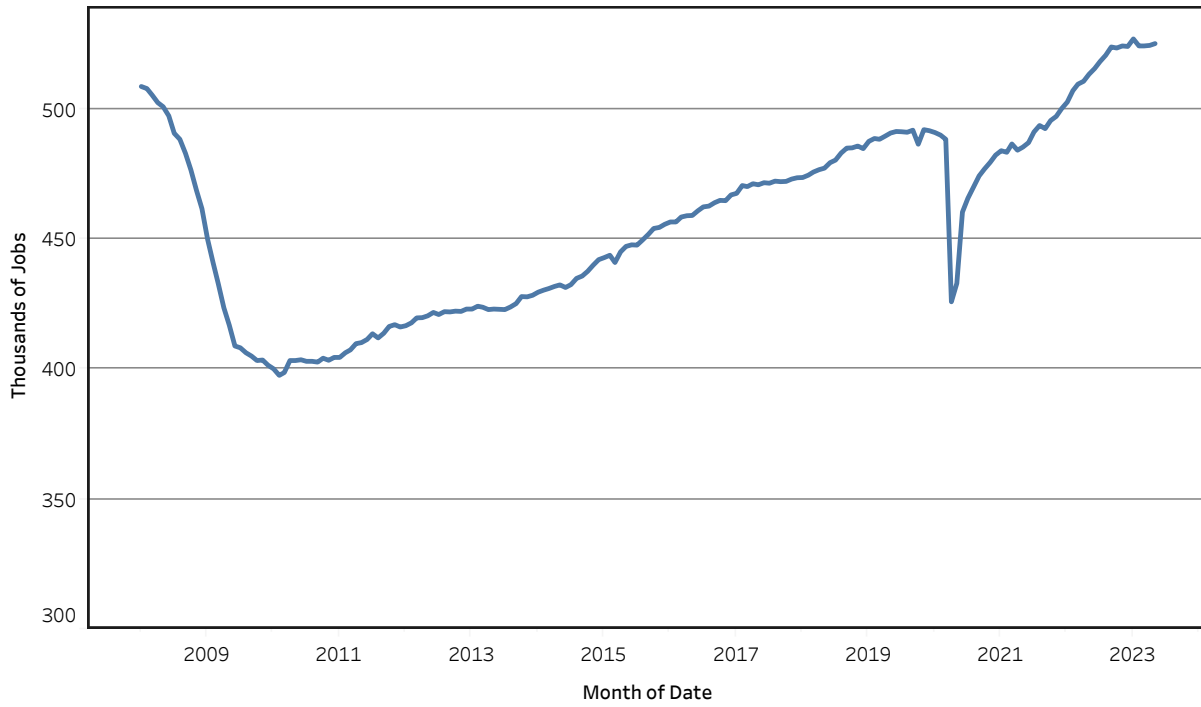
Unemployment Rates - Tennessee Seasonally Adjusted - 2021 to 2023



Unemployment Rates - US & Tennessee Seasonally Adjusted - January 2016 to May 2023



Goods - Producing Jobs in Tennessee Seasonally Adjusted - Jan 2008 to May 2023



Service - Providing Jobs in Tennessee Seasonally Adjusted - Jan 2008 to May 2023

