

TENNESSEE ECONOMIC ANALYSIS

February 2023

NOT TO BE RELEASED BEFORE:

TIME: 1:30 PM CT

DAY: Thursday, March 23, 2023

Prepared by:

Tennessee Department of Labor and Workforce Development

Workforce Insights, Research and Reporting Engine Division

Table of Contents

Economic Indicators

	<u>Page</u>
Briefing Packet Summary	1
Labor Force Estimates Summary - Household Survey	2
Seasonally Adjusted Nonfarm Employment	3
Major Changes in Seasonally Adjusted Nonfarm Employment	3
Business Survey - Not Seasonally Adjusted	4-5

Appendix

Unemployment Rates, 2012 - 2023	6
Hours and Earnings of Production Workers	7

Graphs

Tennessee Unemployment Rates	8
Unemployment Rates - U.S. and Tennessee	8
Goods - Producing Jobs in Tennessee	9
Service - Providing Jobs in Tennessee	9

BRIEFING PACKET SUMMARY

February 2023 pre.

Unemployment Rates

Tennessee	February 2022	January 2023 rev.	February 2023 pre.	Change From:	
				Year Ago	Month Ago
Not Seasonally Adjusted	3.5%	3.5%	3.6%	0.1%	0.1%
Seasonally Adjusted	3.4%	3.5%	3.5%	0.1%	0.0%

United States

Not Seasonally Adjusted	4.1%	3.9%	3.9%	-0.2%	0.0%
Seasonally Adjusted	3.8%	3.4%	3.6%	-0.2%	0.2%

Hours and Earnings of Production Workers (Manufacturing)

Tennessee	January 2023 rev.	February 2023 pre.	Change
Average Weekly Earnings	\$932.58	\$947.77	\$15.19
Average Weekly Hours	39.6	41.1	1.5
Average Hourly Earnings	\$23.55	\$23.06	-\$0.49

United States

Average Weekly Earnings	\$1051.95	\$1043.28	-\$8.67
Average Weekly Hours	40.6	40.5	-0.1
Average Hourly Earnings	\$25.91	\$25.76	-\$0.15

Summary

Tennessee's February seasonally adjusted unemployment rate remained the same at 3.5%.

Over the past year Tennessee's seasonally adjusted unemployment rate increased from 3.4% to 3.5% while the US rate decreased from 3.8% to 3.6%.

Over the year, total nonfarm employment increased by 103,300 jobs. The largest increases were in Leisure and Hospitality, Education and Health Services, and Professional and Business Services.

Over the month, total nonfarm employment increased by 4,800 jobs. The largest increases were in Leisure and Hospitality, Professional and Business Services, and Government.

LABOR FORCE ESTIMATES SUMMARY

HOUSEHOLD SURVEY

Tennessee* Not Seasonally Adjusted	February 2022	Revised January 2022	Preliminary February 2023	Change from February 2022 to February 2023		Change from January 2023 to February 2023	
Civilian Labor Force	3,374,782	3,333,798	3,361,790	-12,992	-0.4%	27,992	0.8%
Labor Force Participation Rate	60.7%	59.1%	59.5%	-1.2	percentage points	0.4	percentage points
Employment	3,258,157	3,215,734	3,241,230	-16,927	-0.5%	25,496	0.8%
Unemployment	116,625	118,064	120,560	3,935	3.4%	2,496	2.1%
Unemployment Rate	3.5%	3.5%	3.6%	0.1	percentage points	0.1	percentage points

Seasonally Adjusted

Civilian Labor Force	3,370,203	3,322,133	3,328,088	-42,115	-1.2%	5,955	0.2%
Labor Force Participation Rate	60.6%	58.9%	58.9%	-1.7	percentage points	0.0	percentage points
Employment	3,255,407	3,206,466	3,211,584	-43,823	-1.3%	5,118	0.2%
Unemployment	114,796	115,667	116,504	1,708	1.5%	837	0.7%
Unemployment Rate	3.4%	3.5%	3.5%	0.1	percentage points	0.0	percentage points

United States** Not Seasonally Adjusted	February 2022	Revised January 2022	Preliminary February 2023	Change from February 2022 to February 2023		Change from January 2023 to February 2023	
Civilian Labor Force	163,725,000	165,070,000	166,178,000	2,453,000	1.5%	1,108,000	0.7%
Labor Force Participation Rate	62.2%	62.1%	62.4%	0.2	percentage points	0.3	percentage points
Employment	155,942,000	158,692,000	159,713,000	3,771,000	2.4%	1,021,000	0.6%
Unemployment	6,782,000	6,378,000	6,465,000	-317,000	-4.7%	87,000	1.4%
Unemployment Rate	4.1%	3.9%	3.9%	-0.2	percentage points	0.0	percentage points

Seasonally Adjusted

Civilian Labor Force	163,862,000	165,832,000	166,251,000	2,389,000	1.5%	419,000	0.3%
Labor Force Participation Rate	62.2%	62.4%	62.5%	0.3	percentage points	0.1	percentage points
Employment	157,590,000	160,138,000	160,315,000	2,725,000	1.7%	177,000	0.1%
Unemployment	6,272,000	5,694,000	5,936,000	-336,000	-5.4%	242,000	4.3%
Unemployment Rate	3.8%	3.4%	3.6%	-0.2	percentage points	0.2	percentage points

* Error range for Tennessee estimates cannot be computed

** Error range for U.S. estimates is +/- 0.2%

Seasonally Adjusted Nonfarm Employment

(numbers in thousands)

Annual Change Monthly Change

	February 2022	January 2023 rev.	February 2023 pre.	February 2022 to February 2023		January 2023 to February 2023	
				Net Chg.	% chg.	Net Chg.	% chg.
				Total Non-Farm	3,207.2	3,305.7	3,310.5
Mining, Logging and Construction	148.1	159.4	157.7	9.6	6.5%	-1.7	-1.1%
Mining and Logging	4.4	4.5	4.5	0.1	2.3%	0.0	0.0%
Construction	143.7	154.9	153.2	9.5	6.6%	-1.7	-1.1%
Manufacturing	359.1	367.7	366.7	7.6	2.1%	-1.0	-0.3%
Durable Goods Manufacturing	228.8	233.9	233.5	4.7	2.1%	-0.4	-0.2%
Non-Durable Goods Manufacturing	130.3	133.8	133.2	2.9	2.2%	-0.6	-0.4%
Trade, Transportation, and Utilities	676.8	688.0	688.1	11.3	1.7%	0.1	0.0%
Wholesale Trade	126.4	133.9	135.6	9.2	7.3%	1.7	1.3%
Retail Trade	342.3	342.2	341.8	-0.5	-0.1%	-0.4	-0.1%
Transportation, Warehousing, and Utilities	208.1	211.9	210.7	2.6	1.2%	-1.2	-0.6%
Information	52.2	56.3	56.5	4.3	8.2%	0.2	0.4%
Financial Activities	173.3	174.4	173.9	0.6	0.3%	-0.5	-0.3%
Finance and Insurance	131.4	131.5	131.0	-0.4	-0.3%	-0.5	-0.4%
Real Estate, Rental, and Leasing	41.9	42.9	42.9	1.0	2.4%	0.0	0.0%
Professional and Business Services	460.7	472.2	474.7	14.0	3.0%	2.5	0.5%
Professional, Scientific, and Technical Services	166.1	177.6	177.8	11.7	7.0%	0.2	0.1%
Management of Companies and Enterprises	53.5	54.6	54.6	1.1	2.1%	0.0	0.0%
Administrative, Support, and Waste Services	241.1	240.0	242.3	1.2	0.5%	2.3	1.0%
Education and Health Services	444.7	460.3	461.2	16.5	3.7%	0.9	0.2%
Educational Services	63.6	64.9	65.8	2.2	3.5%	0.9	1.4%
Health Care and Social Assistance	381.1	395.4	395.4	14.3	3.8%	0.0	0.0%
Leisure and Hospitality	336.1	357.5	360.2	24.1	7.2%	2.7	0.8%
Arts, Entertainment, and Recreation	41.2	44.3	44.5	3.3	8.0%	0.2	0.5%
Accommodation and Food Services	294.9	313.2	315.7	20.8	7.1%	2.5	0.8%
Other Services	124.4	128.5	128.6	4.2	3.4%	0.1	0.1%
Government	431.8	441.4	442.9	11.1	2.6%	1.5	0.3%
Federal Government	51.9	53.5	53.9	2.0	3.9%	0.4	0.7%
State Government	94.4	94.2	94.6	0.2	0.2%	0.4	0.4%
Local Government	285.5	293.7	294.4	8.9	3.1%	0.7	0.2%

Major Changes in Seasonally Adjusted Nonfarm Employment (in thousands)

I. Monthly Change (from January 2023 rev. to February 2023 pre.)

	January 2023 rev.	February 2023 pre.	Change
A. Major Employment Increases			
Leisure and Hospitality	357.5	360.2	2.7
Professional and Business Services	472.2	474.7	2.5
Government	441.4	442.9	1.5
B. Major Employment Decreases			
Construction	154.9	153.2	-1.7
Transportation, Warehousing, and Utilities	211.9	210.7	-1.2
Non-Durable Goods Manufacturing	133.8	133.2	-0.6

II. Yearly Change (from February 2022 to February 2023 pre.)

	February 2022	February 2023 pre.	Change
A. Major Employment Increases			
Leisure and Hospitality	336.1	360.2	24.1
Education and Health Services	444.7	461.2	16.5
Professional and Business Services	460.7	474.7	14.0
B. Major Employment Decreases			
Retail Trade	342.3	341.8	-0.5
Finance and Insurance	131.4	131.0	-0.4

BUSINESS SURVEY - Not Seasonally Adjusted

Estimated Nonfarm Employment by Industry*

(numbers in thousands)	February 2022	January 2023	February 2023	Annual Change		Monthly Change	
				February 2022 to February 2023		January 2023 to February 2023	
				Net Change	% Change	Net Change	% Change
Total Nonfarm	3190.4	3269.5	3290.8	100.4	3.1%	21.3	0.7%
Total Private	2751.2	2829.5	2842.4	91.2	3.3%	-29.7	-1.0%
Goods Producing	503.7	522.0	522.1	18.4	3.7%	-2.7	-0.5%
Mining, Logging and Construction	144.7	154.9	154.3	9.6	6.6%	-1.1	-0.7%
Manufacturing	359.0	367.1	367.8	8.8	2.5%	-0.1	0.0%
Durable Goods	229.0	234.5	234.5	5.5	2.4%	0.9	0.4%
Wood Product Manufacturing	13.8	14.0	14.0	0.2	1.4%	1.9	13.6%
Nonmetallic Mineral Product Manufacturing	14.5	15.1	15.1	0.6	4.1%	2.9	19.2%
Primary Metal Manufacturing	11.1	10.9	10.9	-0.2	-1.8%	3.9	35.8%
Fabricated Metal Product Manufacturing	40.9	41.5	41.7	0.8	2.0%	4.9	11.8%
Machinery Manufacturing	24.5	24.6	24.5	0.0	0.0%	5.9	24.0%
Computer and Electronic Product Manufacturing	6.5	6.9	6.9	0.4	6.2%	6.9	100.0%
Electrical Equipment, Appliance, and Component Manufacturing	18.8	18.6	18.6	-0.2	-1.1%	7.9	42.5%
Transportation Equipment Manufacturing	72.1	76.4	76.4	4.3	6.0%	8.9	11.6%
Furniture and Related Product Manufacturing	9.7	9.3	9.3	-0.4	-4.1%	9.9	106.5%
Miscellaneous Manufacturing	17.1	17.2	17.1	0.0	0.0%	10.9	63.4%
Non-Durable Goods	130.0	132.6	133.3	3.3	2.5%	11.9	9.0%
Food Manufacturing	38.2	39.9	40.3	2.1	5.5%	12.9	32.3%
Beverage and Tobacco Product Manufacturing	8.5	9.2	9.3	0.8	9.4%	13.9	151.1%
Paper Manufacturing	13.4	13.4	13.4	0.0	0.0%	14.9	111.2%
Printing and Related Support Activities	8.1	8.3	8.3	0.2	2.5%	15.9	191.6%
Chemical Manufacturing	26.3	26.8	26.9	0.6	2.3%	16.9	63.1%
Plastics and Rubber Products Manufacturing	25.3	25.2	25.2	-0.1	-0.4%	17.9	71.0%
Service-Providing	2686.7	2747.5	2768.7	82.0	3.1%	21.2	0.8%
Private Service Providing	2247.5	2307.5	2320.3	72.8	3.2%	12.8	0.6%
Trade, Transportation, and Utilities	674.6	689.0	685.4	10.8	1.6%	-3.6	-0.5%
Wholesale Trade	126.1	133.6	135.1	9.0	7.1%	1.5	1.1%
Merchant Wholesalers, Durable Goods	74.4	78.9	79.9	5.5	7.4%	1.0	1.3%
Merchant Wholesalers, Nondurable Goods	44.2	46.8	47.2	3.0	6.8%	0.4	0.9%
Wholesale Trade Agents and Brokers	7.5	7.9	8.0	0.5	6.7%	0.1	1.3%
Retail Trade	340.7	343.1	340.5	-0.2	-0.1%	-2.6	-0.8%
Motor Vehicle and Parts Dealers	47.3	48.2	48.2	0.9	1.9%	0.0	0.0%
Building Material and Garden Equipment and Supplies Dealers	33.3	33.1	33.0	-0.3	-0.9%	-0.1	-0.3%
Food and Beverage Retailers	58.5	60.7	60.6	2.1	3.6%	-0.1	-0.2%
Furniture, Home Furnishings, Electronics, and Appliance Retailers	20.3	19.9	19.3	-1.0	-4.9%	-0.6	-3.0%
General Merchandise Retailers	78.3	74.4	74.5	-3.8	-4.9%	0.1	0.1%
Health and Personal Care Retailers	26.0	25.8	25.3	-0.7	-2.7%	-0.5	-1.9%
Gasoline Stations and Fuel Dealers	24.8	26.3	26.2	1.4	5.6%	-0.1	-0.4%
Clothing, Clothing Accessories, Shoe, and Jewelry Retailers	22.2	24.0	23.0	0.8	3.6%	-1.0	-4.2%
Sporting Goods, Hobby, Musical Instrument, Book, & Misc Retailers	30.0	30.7	30.4	0.4	1.3%	-0.3	-1.0%
Transportation, Warehousing, and Utilities	207.8	212.3	209.8	2.0	1.0%	-2.5	-1.2%
Utilities	4.1	4.2	4.2	0.1	2.4%	0.0	0.0%
Transportation and Warehousing	203.7	208.1	205.6	1.9	0.9%	-2.5	-1.2%
Information	51.9	55.6	56.1	4.2	8.1%	0.5	0.9%
Financial Activities	172.4	173.1	172.5	0.1	0.1%	-0.6	-0.3%
Finance and Insurance	131.3	131.0	130.8	-0.5	-0.4%	-0.2	-0.2%
Real Estate and Rental and Leasing	41.1	42.1	41.7	0.9	2.2%	-1.5	-3.6%
Professional and Business Services	456.4	464.3	468.9	1.9	0.4%	-0.5	-0.1%
Professional, Scientific, and Technical Services	167.4	177.4	178.4	2.9	1.7%	0.5	0.3%
Management of Companies and Enterprises	53.4	54.2	54.4	3.9	7.3%	1.5	2.8%
Administrative and Support and Waste Management and Remediation Service	235.6	232.7	236.1	2.4	1.0%	-2.2	-0.9%
Private Education and Health Services	446.6	456.1	462.4	3.4	0.8%	-1.2	-0.3%
Private Educational Services	67.2	63.0	68.1	4.4	6.5%	-0.2	-0.3%
Health Care and Social Assistance	379.4	393.1	394.3	5.4	1.4%	0.8	0.2%
Ambulatory Health Care Services	162.7	170.1	170.7	6.4	3.9%	1.8	1.1%
Hospitals	109.4	113.4	113.7	7.4	6.8%	2.8	2.5%

Nursing and Residential Care Facilities	55.7	57.2	57.6	8.4	15.1%	3.8	6.6%
Social Assistance	51.6	52.4	52.3	0.7	1.4%	-0.1	-0.2%
Leisure and Hospitality	322.2	342.4	347.3	25.1	7.8%	4.9	1.4%
Arts, Entertainment, and Recreation	35.2	37.9	38.9	3.7	10.5%	1.0	2.6%
Accommodation and Food Services	287.0	304.5	308.4	21.4	7.5%	3.9	1.3%
Accommodation	33.6	36.6	38.0	4.4	13.1%	1.4	3.8%
Food Services and Drinking Places	253.4	267.9	270.4	17.0	6.7%	2.5	0.9%
Other Services	123.4	127.0	127.7	4.3	3.5%	0.7	0.6%
Government	439.2	440.0	448.4	9.2	2.1%	8.4	1.9%
Federal Government	51.8	53.6	54.2	2.4	4.6%	0.6	1.1%
State Government	98.7	90.1	96.7	-2.0	-2.0%	6.6	7.3%
State Government Educational Services	59.2	49.9	56.4	-2.8	-4.7%	6.5	13.0%
State Government Excluding Education	39.5	40.2	40.3	0.8	2.0%	0.1	0.2%
Local Government	288.7	296.3	297.5	8.8	3.0%	1.2	0.4%
Local Government Education Services	146.6	148.6	149.3	2.7	1.8%	0.7	0.5%
Local Government excluding Educational Services	142.1	147.7	148.2	6.1	4.3%	0.5	0.3%

* Estimates include all full- and part-time nonagricultural wage and salary employees who worked during, or received pay for, any part of the pay period which include the 12th of the month. This is a count of jobs by place of work. Agricultural workers, proprietors, self-employed persons, workers in private households, and unpaid family workers are excluded.

Unemployment Rates, 2012-2023

U.S. & Tennessee, Seasonally Adjusted & Not Seasonally Adjusted

	2012				2013				2014				2015			
	U.S.		TN		U.S.		TN		U.S.		TN		U.S.		TN	
	Seas. Adj.	Not Seas. Adj.	Seas. Adj.	Not Seas. Adj.	Seas. Adj.	Not Seas. Adj.	Seas. Adj.	Not Seas. Adj.	Seas. Adj.	Not Seas. Adj.	Seas. Adj.	Not Seas. Adj.	Seas. Adj.	Not Seas. Adj.	Seas. Adj.	Not Seas. Adj.
Jan	8.3	8.8	8.2	8.6	8.0	8.5	8.0 -	8.7 *	6.6	7.0	6.9 *	7.1 *	5.7	6.1	6.1 *	6.6 *
Feb	8.3	8.7	8.1	8.4	7.7	8.1	8.0 *	8.2 *	6.7	7.0	6.8 *	7.1 *	5.5	5.8	6.1 *	6.2 *
Mar	8.2	8.4	8.0	8.1	7.5	7.6	8.0 *	7.9 *	6.7	6.8	6.8 *	6.9 *	5.4	5.6	6.0 *	5.9 *
Apr	8.2	7.7	8.0	7.5	7.6	7.1	8.0 *	7.4 *	6.2	5.9	6.7 *	6.0 *	5.4	5.1	5.9 *	5.3 *
May	8.2	7.9	8.0	7.7	7.5	7.3	7.9 *	7.6 *	6.3	6.1	6.7 *	6.3 *	5.6	5.3	5.8 *	5.6 *
Jun	8.2	8.4	8.0	8.6 *	7.5	7.8	7.9 *	8.5 *	6.1	6.3	6.7 *	7.1 *	5.3	5.5	5.7 *	6.2 *
Jul	8.2	8.6	8.0	8.6 -	7.3	7.7	7.8 *	8.2 *	6.2	6.5	6.6 *	7.3 *	5.2	5.6	5.5 *	6.0 *
Aug	8.1	8.2	7.9	8.0	7.2	7.3	7.7 *	7.7 *	6.1	6.3	6.6 *	6.9 *	5.1	5.2	5.4 *	5.5 *
Sep	7.8	7.6	7.8 -	7.5	7.2	7.0	7.6 *	7.5 *	5.9	5.7	6.5 *	6.4 *	5.0	4.9	5.3 *	5.2 *
Oct	7.8	7.5	7.8 -	7.6 *	7.2	7.0	7.4 *	7.5 *	5.7	5.5	6.4 *	6.1 *	5.0	4.8	5.1 *	5.0 *
Nov	7.7	7.4	7.8 *	7.3	6.9	6.6	7.3 *	6.9 *	5.8	5.5	6.3 *	6.1 *	5.1	4.8	5.0	4.9 *
Dec	7.9	7.6	7.9 -	7.7 *	6.7	6.5	7.1 *	6.8 *	5.6	5.4	6.2 *	5.9 *	5.0	4.8	4.9	4.7
Avg	8.1		8.0		7.4		7.8 *		6.2		6.6 *		5.3		5.6 *	

	2016				2017				2018				2019			
	U.S.		TN		U.S.		TN		U.S.		TN		U.S.		TN	
	Seas. Adj.	Not Seas. Adj.	Seas. Adj.	Not Seas. Adj.	Seas. Adj.	Not Seas. Adj.	Seas. Adj.	Not Seas. Adj.	Seas. Adj.	Not Seas. Adj.	Seas. Adj.	Not Seas. Adj.	Seas. Adj.	Not Seas. Adj.	Seas. Adj.	Not Seas. Adj.
Jan	4.8	5.3	4.8 -	5.0	4.7	5.1	4.6	5.0	4.0	4.5	3.5	3.8	4.0	4.4	3.5	3.8
Feb	4.9	5.2	4.7	4.8	4.6	4.9	4.4	4.6	4.1	4.4	3.5	3.6	3.8	4.1	3.4	3.4
Mar	5.0	5.1	4.7	4.7	4.4	4.6	4.2	4.1	4.0	4.1	3.5	3.5	3.8	3.9	3.4	3.5
Apr	5.1	4.7	4.6	4.3	4.4	4.1	3.9	3.4	4.0	3.7	3.5	3.1	3.6	3.3	3.3	2.9
May	4.8	4.5	4.7	4.2	4.4	4.1	3.7	3.2	3.8	3.6	3.5	3.1	3.7	3.4	3.3	3.1
Jun	4.9	5.1	4.7	5.2 *	4.3	4.5	3.6	4.1	4.0	4.2	3.5	4.1	3.6	3.8	3.2	3.8 -
Jul	4.8	5.1	4.8 -	5.2 *	4.3	4.6	3.5	3.9	3.8	4.1	3.5	3.9	3.7	4.0	3.2	3.7
Aug	4.9	5.0	4.8	5.0 -	4.4	4.5	3.4	3.6	3.8	3.9	3.5	3.6	3.7	3.8	3.2	3.3
Sep	5.0	4.8	4.9	4.9 *	4.3	4.1	3.4	3.2	3.7	3.6	3.5	3.4	3.5	3.3	3.3	3.1
Oct	4.9	4.7	4.9 -	4.7 -	4.2	3.9	3.4	3.3	3.8	3.5	3.5	3.4	3.6	3.3	3.4	3.3 -
Nov	4.7	4.4	4.8	4.5 *	4.2	3.9	3.4	3.2	3.8	3.5	3.5	3.1	3.6	3.3	3.4	3.1
Dec	4.7	4.5	4.7 -	4.5 -	4.1	3.9	3.5	3.2	3.9	3.7	3.5	3.2	3.6	3.4	3.5	3.3
Avg	4.9		4.7		4.4		3.7		3.9		3.5		3.7		3.3	

	2020				2021				2022				2023			
	U.S.		TN		U.S.		TN		U.S.		TN		U.S.		TN	
	Seas. Adj.	Not Seas. Adj.	Seas. Adj.	Not Seas. Adj.	Seas. Adj.	Not Seas. Adj.	Seas. Adj.	Not Seas. Adj.	Seas. Adj.	Not Seas. Adj.	Seas. Adj.	Not Seas. Adj.	Seas. Adj.	Not Seas. Adj.	Seas. Adj.	Not Seas. Adj.
Jan	3.5	4.0	3.5 -	3.7	6.3	6.8	5.4	5.6	4.0	4.4	3.5	3.7	3.4	3.9	3.5 *	3.5
Feb	3.5	3.8	3.5 -	3.4	6.2	6.6	5.3	5.3	3.8	4.1	3.4	3.5	3.6	3.9	3.5	3.6
Mar	4.4	4.5	3.5	3.9	6.1	6.2	5.1	5.2	3.6	3.8	3.3	3.2				
Apr	14.7	14.4	15.8 *	15.0 *	6.1	5.7	5.0	4.7	3.6	3.3	3.3	3.1				
May	13.2	13.0	12.1	11.8	5.8	5.5	4.8	4.6	3.6	3.4	3.2	3.2				
Jun	11.0	11.2	10.1	10.8	5.9	6.1	4.6	5.6	3.6	3.8	3.2	4.0 *				
Jul	10.2	10.5	9.0	10.1	5.4	5.7	4.4	4.9	3.5	3.8	3.3	3.7				
Aug	8.4	8.5	7.7	7.8	5.2	5.3	4.2	4.4	3.7	3.8	3.3	3.6				
Sep	7.9	7.7	7.1	6.9	4.8	4.6	4.0	3.8	3.5	3.3	3.4	3.2				
Oct	6.9	6.6	6.4	6.0	4.5	4.3	3.8	3.5	3.7	3.4	3.5	3.4 -				
Nov	6.7	6.4	6.0	5.4	4.2	3.9	3.7	3.2	3.6	3.4	3.5	3.2				
Dec	6.7	6.5	5.7	5.4	3.9	3.7	3.6	3.1	3.5	3.3	3.5 -	2.9				
Avg	8.1		7.5		5.3		4.5		3.6		3.4					

* Designates when Tennessee's unemployment rate is greater than the U.S. rate

- Designates when Tennessee's unemployment rate is equal to the U.S. rate

HOURS AND EARNINGS OF PRODUCTION WORKERS

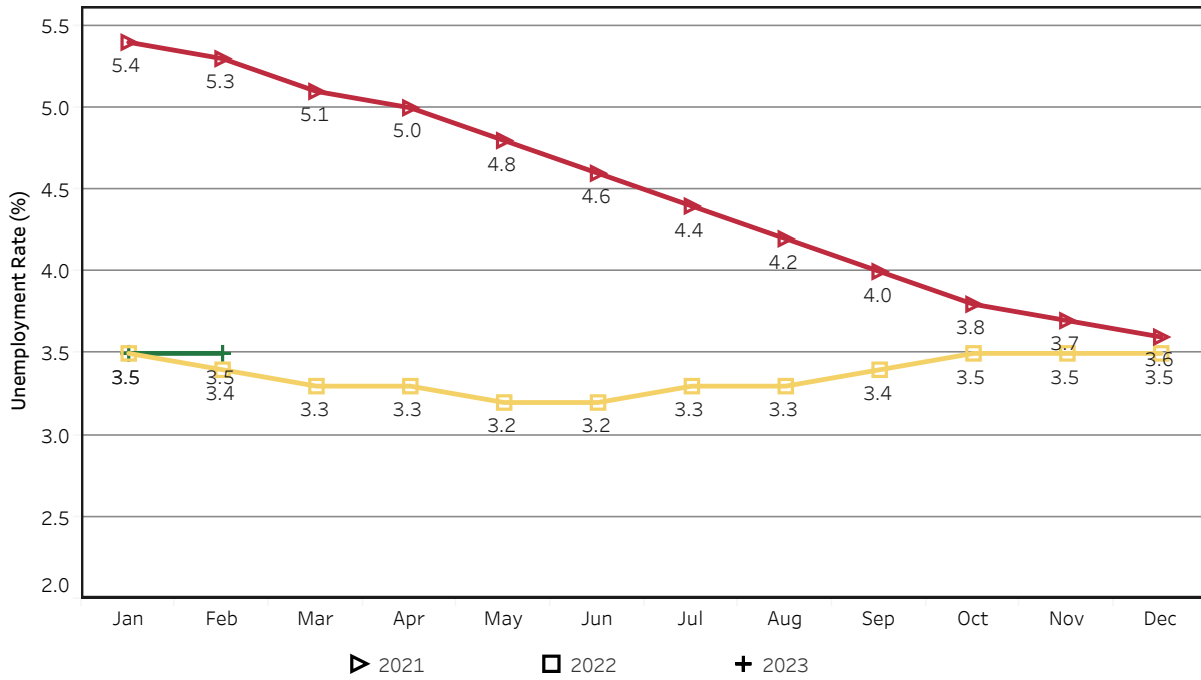
	Average Weekly Earning			Average Weekly Hours			Average Hourly Earning		
	February 2022	January 2023	February 2023	February 2022	January 2023	February 2023	February 2022	January 2023	February 2023
Manufacturing	\$977.80	\$932.58	\$947.77	43.4	39.6	41.1	\$22.53	\$23.55	\$23.06
Durable Goods	1019.10	947.64	990.79	43.0	39.8	41.3	23.70	23.81	23.99
Non-Durable Goods	908.90	826.27	877.20	44.1	38.2	40.8	20.61	21.63	21.50

HOURS AND EARNINGS OF PRODUCTION WORKERS - ALL MANUFACTURING

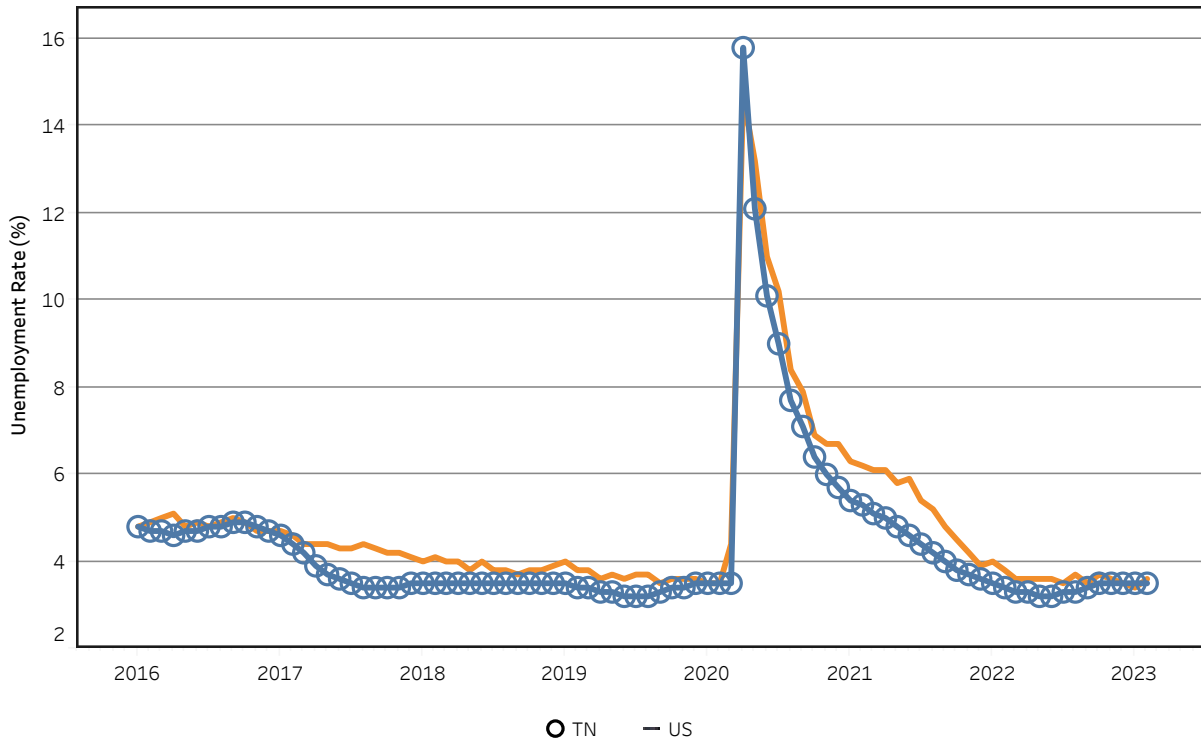
(ranked January 2023 preliminary average weekly earnings; February 2023 will be available later this month)

	Average Weekly Earning			Average Weekly Hours			Average Hourly Earning		
	January 2022	January 2023	Percent Change	January 2022	January 2023	Percent Change	January 2022	January 2023	Percent Change
FLORIDA	\$1084.8	\$1173.75	8.2%	42.00	42.10	0.2%	\$25.83	\$27.88	7.9%
KENTUCKY	\$1002.7	\$1003.07	0.0%	40.40	40.30	-0.2%	\$24.82	\$24.89	0.3%
GEORGIA	\$950.79	\$992.99	4.4%	41.00	41.60	1.5%	\$23.19	\$23.87	2.9%
VIRGINIA	\$870.48	\$991.50	13.9%	40.30	41.80	3.7%	\$21.60	\$23.72	9.8%
ALABAMA	\$913.31	\$987.70	8.1%	40.70	41.50	2.0%	\$22.44	\$23.80	6.1%
SOUTH CAROLINA	\$972.52	\$968.90	-0.4%	41.00	39.10	-4.6%	\$23.72	\$24.78	4.5%
TENNESSEE	\$958.02	\$901.60	-5.9%	42.00	39.20	-6.7%	\$22.81	\$23.00	0.8%
NORTH CAROLINA	\$853.58	\$871.97	2.2%	40.90	40.50	-1.0%	\$20.87	\$21.53	3.2%
MISSISSIPPI	\$817.65	\$854.06	4.5%	39.50	40.40	2.3%	\$20.70	\$21.14	2.1%
ARKANSAS	\$804.36	\$804.84	0.1%	39.80	38.00	-4.5%	\$20.21	\$21.18	4.8%

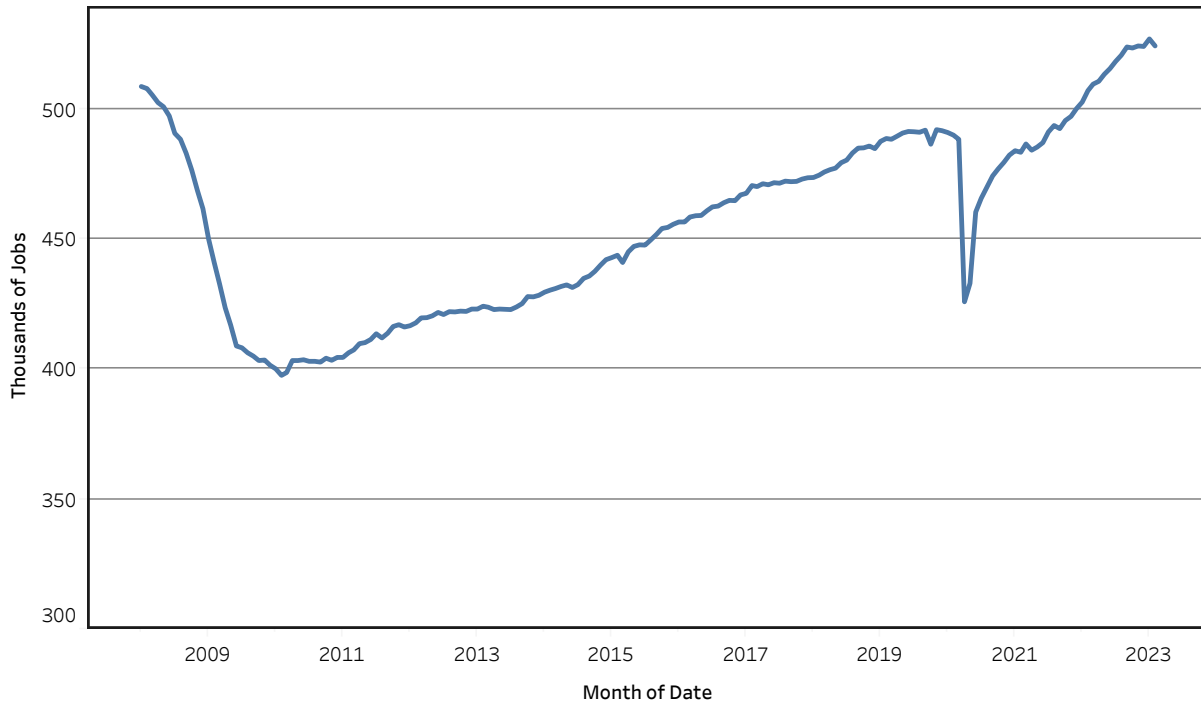
Unemployment Rates - Tennessee Seasonally Adjusted - 2021 to 2023



Unemployment Rates - US & Tennessee Seasonally Adjusted - January 2016 to February 2023



Goods - Producing Jobs in Tennessee Seasonally Adjusted - Jan 2008 to Feb 2023



Service - Providing Jobs in Tennessee Seasonally Adjusted - Jan 2008 to Feb 2023

