

# **TENNESSEE ECONOMIC ANALYSIS**

**November 2020**

**NOT TO BE RELEASED BEFORE:**

TIME: 1:30 PM CT

DAY: Thursday, December 17, 2020

**Prepared by:**

**Tennessee Department of Labor and Workforce Development**

**Workforce Insights, Research and Reporting Engine Division**

## Table of Contents

### Economic Indicators

	<u>Page</u>
Briefing Packet Summary	1
Labor Force Estimates Summary - Household Survey	2
Seasonally Adjusted Nonfarm Employment	3
Major Changes in Seasonally Adjusted Nonfarm Employment	3
Business Survey - Not Seasonally Adjusted	4-5

### Appendix

Unemployment Rates, 2009 - 2020	6
Hours and Earnings of Production Workers	7

### Graphs

Tennessee Unemployment Rates	8
Unemployment Rates - U.S. and Tennessee	8
Goods - Producing Jobs in Tennessee	9
Service - Providing Jobs in Tennessee	9

## BRIEFING PACKET SUMMARY

November 2020 pre.

### Unemployment Rates

Tennessee	November 2019	October 2020 rev.	November 2020 pre.	Change From:	
				Year Ago	Month Ago
Not Seasonally Adjusted	3.1%	7.2%	<b>5.0%</b>	1.9%	-2.2%
Seasonally Adjusted	3.3%	7.3%	<b>5.3%</b>	2.0%	-2.0%

#### **United States**

Not Seasonally Adjusted	3.3%	6.6%	<b>6.4%</b>	3.1%	-0.2%
Seasonally Adjusted	3.5%	6.9%	<b>6.7%</b>	3.2%	-0.2%

### Hours and Earnings of Production Workers (Manufacturing)

Tennessee	October 2020 rev.	November 2020 pre.	Change
Average Weekly Earnings	\$809.13	\$859.88	\$50.75
Average Weekly Hours	39.8	41.5	1.7
Average Hourly Earnings	\$20.33	\$20.72	\$0.39

#### **United States**

Average Weekly Earnings	\$951.60	\$960.13	\$8.53
Average Weekly Hours	41.5	41.6	0.1
Average Hourly Earnings	\$22.93	\$23.08	\$0.15

### Summary

Tennessee's November seasonally adjusted unemployment rate decreased to 5.3% from the October revised rate of 7.3%.

Over the past year, Tennessee's seasonally adjusted unemployment rate increased from 3.3% to 5.3% while the national rate increased from 3.5% to 6.7%.

Total nonfarm employment increased 2,100 jobs from October to November. The largest increases occurred in manufacturing, trade/transportation/utilities, and mining/logging/construction.

Over the year, nonfarm employment decreased 112,800 jobs. The largest decreases occurred in leisure/hospitality, manufacturing, and government.

**LABOR FORCE ESTIMATES SUMMARY**

**HOUSEHOLD SURVEY**

<b>Tennessee*</b>	November 2019	Revised October 2020	Preliminary November 2020	Change from November 2019 to November 2020		Change from October 2020 to November 2020	
Not Seasonally Adjusted							
Civilian Labor Force	3,366,225	3,329,990	<b>3,450,249</b>	84,024	2.5%	120,259	3.6%
Employment	3,261,386	3,091,737	<b>3,277,735</b>	16,349	0.5%	185,998	6.0%
Unemployment	104,839	238,253	<b>172,514</b>	67,675	64.6%	-65,739	-27.6%
Unemployment Rate	3.1%	7.2%	<b>5.0%</b>	1.9	percentage points	-2.2	percentage points
Seasonally Adjusted							
Civilian Labor Force	3,367,604	3,336,432	<b>3,460,413</b>	92,809	2.8%	123,981	3.7%
Employment	3,256,017	3,091,349	<b>3,278,073</b>	22,056	0.7%	186,724	6.0%
Unemployment	111,587	245,083	<b>182,340</b>	70,753	63.4%	-62,743	-25.6%
Unemployment Rate	3.3%	7.3%	<b>5.3%</b>	2.0	percentage points	-2.0	percentage points

<b>United States **</b>	November 2019	Revised October 2020	Preliminary November 2020	Change from November 2019 to November 2020		Change from October 2020 to November 2020	
Not Seasonally Adjusted							
Civilian Labor Force	164,386,000	161,053,000	<b>160,468,000</b>	-3,918,000	-2.4%	-585,000	-0.4%
Employment	158,945,000	150,433,000	<b>150,203,000</b>	-8,742,000	-5.5%	-230,000	-0.2%
Unemployment	5,441,000	10,620,000	<b>10,264,000</b>	4,823,000	88.6%	-356,000	-3.4%
Unemployment Rate	3.3%	6.6%	<b>6.4%</b>	3.1	percentage points	-0.2	percentage points
Seasonally Adjusted							
Civilian Labor Force	164,347,000	160,867,000	<b>160,467,000</b>	-3,880,000	-2.4%	-400,000	-0.2%
Employment	158,536,000	149,806,000	<b>149,732,000</b>	-8,804,000	-5.6%	-74,000	0.0%
Unemployment	5,811,000	11,061,000	<b>10,735,000</b>	4,924,000	84.7%	-326,000	-2.9%
Unemployment Rate	3.5%	6.9%	<b>6.7%</b>	3.2	percentage points	-0.2	percentage points

\* Error range for Tennessee estimates cannot be computed

\*\* Error range for U.S. estimates is +/- 0.2%

## Seasonally Adjusted Nonfarm Employment

(numbers in thousands)

Annual Change      Monthly Change

	November 2019	October 2020 rev.	November 2020	November 2019 to November 2020		October 2020 to November 2020	
				Net Chg.	% chg.	Net Chg.	% chg.
				<b>Total Non-Farm</b>	3,143.2	3,028.3	<b>3,030.4</b>
Mining, Logging, and Construction	133.8	130.0	<b>131.3</b>	-2.5	-1.9%	1.3	1.0%
Mining and Logging	4.5	3.9	<b>3.9</b>	-0.6	-13.3%	0.0	0.0%
Construction	129.3	126.1	<b>127.4</b>	-1.9	-1.5%	1.3	1.0%
Manufacturing	353.3	329.6	<b>332.2</b>	-21.1	-6.0%	2.6	0.8%
Durable Goods Manufacturing	224.7	208.1	<b>210.0</b>	-14.7	-6.5%	1.9	0.9%
Non-Durable Goods Manufacturing	128.6	121.5	<b>122.2</b>	-6.4	-5.0%	0.7	0.6%
Trade, Transportation, and Utilities	646.0	639.3	<b>641.4</b>	-4.6	-0.7%	2.1	0.3%
Wholesale Trade	121.1	116.2	<b>115.5</b>	-5.6	-4.6%	-0.7	-0.6%
Retail Trade	338.4	341.0	<b>341.7</b>	3.3	1.0%	0.7	0.2%
Transportation, Warehousing, and Utilities	186.5	182.1	<b>184.2</b>	-2.3	-1.2%	2.1	1.2%
Information	46.5	43.8	<b>43.8</b>	-2.7	-5.8%	0.0	0.0%
Financial Activities	173.2	175.0	<b>173.9</b>	0.7	0.4%	-1.1	-0.6%
Finance and Insurance	130.4	131.9	<b>131.2</b>	0.8	0.6%	-0.7	-0.5%
Real Estate, Rental, and Leasing	42.8	43.1	<b>42.7</b>	-0.1	-0.2%	-0.4	-0.9%
Professional and Business Services	429.4	423.7	<b>423.0</b>	-6.4	-1.5%	-0.7	-0.2%
Professional, Scientific, and Technical Services	150.0	145.0	<b>146.2</b>	-3.8	-2.5%	1.2	0.8%
Management of Companies and Enterprises	52.4	52.6	<b>52.8</b>	0.4	0.8%	0.2	0.4%
Administrative, Support, and Waste Services	227.0	226.1	<b>224.0</b>	-3.0	-1.3%	-2.1	-0.9%
Education and Health Services	444.5	431.4	<b>432.6</b>	-11.9	-2.7%	1.2	0.3%
Educational Services	62.5	62.0	<b>62.5</b>	0.0	0.0%	0.5	0.8%
Health Care and Social Assistance	382.0	369.4	<b>370.1</b>	-11.9	-3.1%	0.7	0.2%
Leisure and Hospitality	355.9	309.5	<b>309.5</b>	-46.4	-13.0%	0.0	0.0%
Arts, Entertainment, and Recreation	44.9	33.8	<b>34.0</b>	-10.9	-24.3%	0.2	0.6%
Accommodation and Food Services	311.0	275.7	<b>275.5</b>	-35.5	-11.4%	-0.2	-0.1%
Other Services	121.7	120.1	<b>120.1</b>	-1.6	-1.3%	0.0	0.0%
Government	438.9	425.9	<b>422.6</b>	-16.3	-3.7%	-3.3	-0.8%
Federal Government	50.5	52.3	<b>50.7</b>	0.2	0.4%	-1.6	-3.1%
State Government	97.5	92.2	<b>90.8</b>	-6.7	-6.9%	-1.4	-1.5%
Local Government	290.9	281.4	<b>281.1</b>	-9.8	-3.4%	-0.3	-0.1%

### Major Changes in Seasonally Adjusted Nonfarm Employment (in thousands)

#### I. Monthly Change (from October 2020 rev. to November 2020 pre.)

	October 2020 rev.	November 2020 pre.	Change
<b>A. Major Employment Increases</b>			
Manufacturing	329.6	332.2	2.6
Trade, Transportation, and Utilities	639.3	641.4	2.1
Mining, Logging and Construction	130.0	131.3	1.3
<b>B. Major Employment Decreases</b>			
Government	425.9	422.6	-3.3
Financial Activities	175.0	173.9	-1.1
Professional and Business Services	423.7	423.0	-0.7

#### II. Yearly Change (from November 2019 to November 2020 pre.)

	November 2019	November 2020 pre.	Change
<b>A. Major Employment Increases</b>			
Retail Trade	338.4	341.7	3.3
Finance and Insurance	130.4	131.2	0.8
Management of Companies and Enterprises	52.4	52.8	0.4
<b>B. Major Employment Decreases</b>			
Leisure and Hospitality	355.9	309.5	-46.4
Manufacturing	353.3	332.2	-21.1
Government	438.9	422.6	-16.3

**BUSINESS SURVEY - Not Seasonally Adjusted**

Estimated Nonfarm Employment by Industry\*

(numbers in thousands)	November 2019	October 2020 rev.	November 2020	Annual Change		Monthly Change	
				November 2019 to November 2020		October 2020 to November 2020	
				Net Chg.	% chg.	Net Chg.	% chg.
Total Non-Farm	3,184.7	3,049.3	<b>3,066.2</b>	-118.5	-3.7%	16.9	0.6%
Total Private	2,732.4	2,612.1	<b>2,630.9</b>	-101.5	-3.7%	18.8	0.7%
Goods Producing	489.4	460.4	<b>464.4</b>	-25.0	-5.1%	4.0	0.9%
Mining, Logging, and Construction	134.5	130.8	<b>132.2</b>	-2.3	-1.7%	1.4	1.1%
Manufacturing	354.9	329.6	<b>332.2</b>	-22.7	-6.4%	2.6	0.8%
Durable Goods Manufacturing	225.9	208.2	<b>209.8</b>	-16.1	-7.1%	1.6	0.8%
Wood Products	12.6	13.5	<b>13.5</b>	0.9	7.1%	0.0	0.0%
Non-Metallic Mineral Products	14.2	14.6	<b>14.7</b>	0.5	3.5%	0.1	0.7%
Primary Metal Products	11.3	12.2	<b>12.3</b>	1.0	8.8%	0.1	0.8%
Fabricated Metal Products	37.9	39.2	<b>39.6</b>	1.7	4.5%	0.4	1.0%
Machinery Manufacturing	26.0	27.0	<b>27.6</b>	1.6	6.2%	0.6	2.2%
Computer and Electronic Products	5.6	5.8	<b>5.9</b>	0.3	5.4%	0.1	1.7%
Electrical Equipment and Appliances	17.3	17.9	<b>18.0</b>	0.7	4.0%	0.1	0.6%
Transportation Equipment	74.4	49.9	<b>50.1</b>	-24.3	-32.7%	0.2	0.4%
Furniture and Related Products	9.8	10.3	<b>10.2</b>	0.4	4.1%	-0.1	-1.0%
Miscellaneous Durable Manufacturing	16.8	17.8	<b>17.9</b>	1.1	6.5%	0.1	0.6%
Non-Durable Goods Manufacturing	129.0	121.4	<b>122.4</b>	-6.6	-5.1%	1.0	0.8%
Food Manufacturing	36.2	33.4	<b>33.5</b>	-2.7	-7.5%	0.1	0.3%
Beverage and Tobacco Products	7.7	7.4	<b>7.4</b>	-0.3	-3.9%	0.0	0.0%
Paper Manufacturing	12.8	12.7	<b>12.7</b>	-0.1	-0.8%	0.0	0.0%
Printing and Related Support Activities	8.9	7.0	<b>7.0</b>	-1.9	-21.3%	0.0	0.0%
Chemical Manufacturing	26.1	25.8	<b>25.8</b>	-0.3	-1.1%	0.0	0.0%
Plastics and Rubber Products	24.6	22.0	<b>22.0</b>	-2.6	-10.6%	0.0	0.0%
Service Providing	2,695.3	2,588.9	<b>2,601.8</b>	-93.5	-3.5%	12.9	0.5%
Private Service Providing (Service Providing Less Government)	2,243.0	2,151.7	<b>2,166.5</b>	-76.5	-3.4%	14.8	0.7%
Trade, Transportation, and Utilities	660.5	637.8	<b>651.9</b>	-8.6	-1.3%	14.1	2.2%
Wholesale Trade	121.8	116.7	<b>115.9</b>	-5.9	-4.8%	-0.8	-0.7%
Merchant wholesalers, Durable Goods	71.7	69.6	<b>69.1</b>	-2.6	-3.6%	-0.5	-0.7%
Merchant wholesalers, Non-Durable Goods	42.8	40.4	<b>40.1</b>	-2.7	-6.3%	-0.3	-0.7%
Wholesale Electronic Markets	7.3	6.7	<b>6.7</b>	-0.6	-8.2%	0.0	0.0%
Retail Trade	347.6	339.6	<b>348.2</b>	0.6	0.2%	8.6	2.5%
Motor Vehicle and Parts Dealers	47.7	45.4	<b>46.3</b>	-1.4	-2.9%	0.9	2.0%
Furniture and Home Furnishings Stores	10.7	10.8	<b>10.9</b>	0.2	1.9%	0.1	0.9%
Building Material and Garden Supply Stores	29.2	32.0	<b>31.9</b>	2.7	9.2%	-0.1	-0.3%
Food and Beverage Stores	55.1	56.7	<b>57.4</b>	2.3	4.2%	0.7	1.2%
Health and Personal Care Stores	24.0	21.7	<b>21.9</b>	-2.1	-8.8%	0.2	0.9%
Gasoline Stations	24.2	24.6	<b>25.1</b>	0.9	3.7%	0.5	2.0%
Clothing and Clothing Accessories Stores	25.7	15.3	<b>16.5</b>	-9.2	-35.8%	1.2	7.8%
Sporting Goods, Hobby, Book, and Music Stores	13.4	11.3	<b>11.9</b>	-1.5	-11.2%	0.6	5.3%
General Merchandise Stores	77.3	78.2	<b>81.7</b>	4.4	5.7%	3.5	4.5%
Miscellaneous Store Retailers	18.6	17.0	<b>17.3</b>	-1.3	-7.0%	0.3	1.8%
Non-Store Retailers	9.4	8.3	<b>8.6</b>	-0.8	-8.5%	0.3	3.6%
Transportation, Warehousing, and Utilities	191.1	181.5	<b>187.8</b>	-3.3	-1.7%	6.3	3.5%
Utilities	3.6	3.2	<b>3.2</b>	-0.4	-11.1%	0.0	0.0%
Transportation and Warehousing	187.5	178.3	<b>184.6</b>	-2.9	-1.5%	6.3	3.5%
Information	47.2	43.8	<b>44.4</b>	-2.8	-5.9%	0.6	1.4%
Financial Activities	172.8	175.5	<b>174.6</b>	1.8	1.0%	-0.9	-0.5%
Finance and Insurance	130.2	132.1	<b>131.6</b>	1.4	1.1%	-0.5	-0.4%
Real Estate, Rental, and Leasing	42.6	43.4	<b>43.0</b>	0.4	0.9%	-0.4	-0.9%
Professional and Business Services	436.6	429.3	<b>430.9</b>	-5.7	-1.3%	1.6	0.4%
Professional, Scientific, and Technical Services	150.2	145.0	<b>147.6</b>	-2.6	-1.7%	2.6	1.8%
Management of Companies and Enterprises	52.6	52.7	<b>52.9</b>	0.3	0.6%	0.2	0.4%
Administrative, Support, and Waste Services	233.8	231.6	<b>230.4</b>	-3.4	-1.5%	-1.2	-0.5%
Education and Health Services	449.9	436.3	<b>437.4</b>	-12.5	-2.8%	1.1	0.3%
Educational Services	65.5	65.1	<b>65.5</b>	0.0	0.0%	0.4	0.6%
Health Care and Social Assistance	384.4	371.2	<b>371.9</b>	-12.5	-3.3%	0.7	0.2%
Ambulatory Health Care Services	157.9	152.9	<b>154.2</b>	-3.7	-2.3%	1.3	0.9%
Hospitals	110.1	107.3	<b>107.2</b>	-2.9	-2.6%	-0.1	-0.1%
Nursing and Residential Care Facilities	63.7	60.8	<b>59.9</b>	-3.8	-6.0%	-0.9	-1.5%
Social Assistance	52.7	50.2	<b>50.6</b>	-2.1	-4.0%	0.4	0.8%
Leisure and Hospitality	353.8	309.0	<b>307.6</b>	-46.2	-13.1%	-1.4	-0.5%
Arts, Entertainment, and Recreation	43.0	33.2	<b>32.8</b>	-10.2	-23.7%	-0.4	-1.2%

Accommodation and Food Services	310.8	275.8	<b>274.8</b>	-36.0	-11.6%	-1.0	-0.4%
Accommodation	40.6	27.2	<b>27.8</b>	-12.8	-31.5%	0.6	2.2%
Food Services and Drinking Places	270.2	248.6	<b>247.0</b>	-23.2	-8.6%	-1.6	-0.6%
Other Services	122.2	120.0	<b>119.7</b>	-2.5	-2.0%	-0.3	-0.3%
Government	452.3	437.2	<b>435.3</b>	-17.0	-3.8%	-1.9	-0.4%
Federal Government	50.7	52.1	<b>50.9</b>	0.2	0.4%	-1.2	-2.3%
State Government	102.5	96.6	<b>95.3</b>	-7.2	-7.0%	-1.3	-1.3%
State Government Educational Services	61.1	55.8	<b>54.7</b>	-6.4	-10.5%	-1.1	-2.0%
State Government Excluding Education	41.4	40.8	<b>40.6</b>	-0.8	-1.9%	-0.2	-0.5%
Local Government	299.1	288.5	<b>289.1</b>	-10.0	-3.3%	0.6	0.2%
Local Government Educational Services	148.7	142.1	<b>142.5</b>	-6.2	-4.2%	0.4	0.3%
Local Government Excluding Education	150.4	146.4	<b>146.6</b>	-3.8	-2.5%	0.2	0.1%

\* Estimates include all full- and part-time nonagricultural wage and salary employees who worked during, or received pay for, any part of the pay period which include the 12th of the month. This is a count of jobs by place of work. Agricultural workers, proprietors, self-employed persons, workers in private households, and unpaid family workers are excluded.

## Unemployment Rates, 2009-2020

### U.S. Tennessee, Seasonally Adjusted & Not Seasonally Adjusted

	2009				2010				2011				2012			
	U.S.		TN		U.S.		TN		U.S.		TN		U.S.		TN	
	Seas. Adj.	Not Seas. Adj.	Seas. Adj.	Not Seas. Adj.	Seas. Adj.	Not Seas. Adj.	Seas. Adj.	Not Seas. Adj.	Seas. Adj.	Not Seas. Adj.	Seas. Adj.	Not Seas. Adj.	Seas. Adj.	Not Seas. Adj.	Seas. Adj.	Not Seas. Adj.
Jan	7.8	8.5	9.1 *	9.8 *	9.8	10.6	10.4 *	11.2 *	9.1	9.8	9.5 *	10.1 *	8.3	8.8	7.9	8.3
Feb	8.3	8.9	9.8 *	10.5 *	9.8	10.4	10.3 *	10.8 *	9.0	9.5	9.4 *	9.8 *	8.3	8.7	7.8	8.2
Mar	8.7	9.0	10.3 *	10.9 *	9.9	10.2	10.1 *	10.6 *	9.0	9.2	9.3 *	9.5 *	8.2	8.4	7.8	7.9
Apr	9.0	8.6	10.6 *	10.2 *	9.9	9.5	9.8	9.6 *	9.1	8.7	9.2 *	9.0 *	8.2	7.7	7.9	7.3
May	9.4	9.1	10.8 *	10.6 *	9.6	9.3	9.6 -	9.3 -	9.0	8.7	9.2 *	8.9 *	8.2	7.9	7.9	7.7
Jun	9.5	9.7	10.9 *	11.3 *	9.4	9.6	9.3	9.5	9.1	9.3	9.1 -	9.6 *	8.2	8.4	8.0	8.5 *
Jul	9.5	9.7	10.8 *	11.0 *	9.4	9.7	9.2	9.3	9.0	9.3	9.1 *	9.1	8.2	8.6	7.9	8.5
Aug	9.6	9.6	10.8 *	10.7 *	9.5	9.5	9.2	9.3	9.0	9.1	9.0 -	9.1 -	8.1	8.2	7.8	8.1
Sep	9.8	9.5	10.7 *	10.4 *	9.5	9.2	9.3	9.0	9.0	8.8	8.8	8.9 *	7.8	7.6	7.7	7.4
Oct	10.0	9.5	10.6 *	10.2 *	9.4	9.0	9.4 -	9.0 -	8.8	8.5	8.6	8.3	7.8	7.5	7.7	7.4
Nov	9.9	9.4	10.6 *	9.9 *	9.8	9.3	9.5	9.3 -	8.6	8.2	8.3	7.8	7.7	7.4	7.7 -	7.1
Dec	9.9	9.7	10.5 *	10.3 *	9.3	9.1	9.5 *	9.2 *	8.5	8.3	8.1	7.8	7.9	7.6	7.8	7.7 *
Avg		9.3		10.5 *		9.6		9.7 *		8.9		9.0 *		8.1		7.8

	2013				2014				2015				2016			
	U.S.		TN		U.S.		TN		U.S.		TN		U.S.		TN	
	Seas. Adj.	Not Seas. Adj.	Seas. Adj.	Not Seas. Adj.	Seas. Adj.	Not Seas. Adj.	Seas. Adj.	Not Seas. Adj.	Seas. Adj.	Not Seas. Adj.	Seas. Adj.	Not Seas. Adj.	Seas. Adj.	Not Seas. Adj.	Seas. Adj.	Not Seas. Adj.
Jan	8.0	8.5	7.9	8.7 *	6.6	7.0	6.8 *	6.9	5.7	6.1	6.2 *	6.7 *	4.9	5.3	4.8	5.0
Feb	7.7	8.1	8.0 *	8.2 *	6.7	7.0	6.7 -	6.9	5.5	5.8	6.1 *	6.2 *	4.9	5.2	4.7	4.7
Mar	7.5	7.6	8.1 *	8.0 *	6.7	6.8	6.6	6.9 *	5.4	5.6	6.0 *	5.9 *	5.0	5.1	4.7	4.7
Apr	7.6	7.1	8.0 *	7.5 *	6.2	5.9	6.6 *	5.9 -	5.4	5.1	5.9 *	5.3 *	5.0	4.7	4.7	4.2
May	7.5	7.3	8.0 *	7.7 *	6.3	6.1	6.7 *	6.3 *	5.6	5.3	5.8 *	5.7 *	4.8	4.5	4.7	4.2
Jun	7.5	7.8	7.9 *	8.5 *	6.1	6.3	6.7 *	7.0 *	5.3	5.5	5.7 *	6.2 *	4.9	5.1	4.7	5.2 *
Jul	7.3	7.7	7.8 *	8.1 *	6.2	6.5	6.7 *	7.3 *	5.2	5.6	5.6 *	6.1 *	4.8	5.1	4.8 -	5.2 *
Aug	7.2	7.3	7.8 *	7.8 *	6.1	6.3	6.6 *	7.0 *	5.1	5.2	5.5 *	5.5 *	4.9	5.0	4.8	4.9
Sep	7.2	7.0	7.6 *	7.5 *	5.9	5.7	6.6 *	6.5 *	5.0	4.9	5.3 *	5.3 *	5.0	4.8	4.8	4.9 *
Oct	7.2	7.0	7.4 *	7.6 *	5.7	5.5	6.5 *	6.2 *	5.0	4.8	5.2 *	5.1 *	4.9	4.7	4.8	4.7 -
Nov	6.9	6.6	7.2 *	7.0 *	5.8	5.5	6.4 *	6.2 *	5.1	4.8	5.0	4.9 *	4.7	4.4	4.7 -	4.4 -
Dec	6.7	6.5	7.1 *	6.8 *	5.6	5.4	6.3 *	5.9 *	5.0	4.8	4.9	4.7	4.7	4.5	4.6	4.4
Avg		7.4		7.8 *		6.2		6.6 *		5.3		5.6 *		4.9		4.7

	2017				2018				2019				2020			
	U.S.		TN		U.S.		TN		U.S.		TN		U.S.		TN	
	Seas. Adj.	Not Seas. Adj.	Seas. Adj.	Not Seas. Adj.	Seas. Adj.	Not Seas. Adj.	Seas. Adj.	Not Seas. Adj.	Seas. Adj.	Not Seas. Adj.	Seas. Adj.	Not Seas. Adj.	Seas. Adj.	Not Seas. Adj.	Seas. Adj.	Not Seas. Adj.
Jan	4.7	5.1	4.5	5.0	4.1	4.5	3.6	4.0	4.0	4.4	3.4	3.9	3.6	4.0	3.3	3.8
Feb	4.6	4.9	4.3	4.5	4.1	4.4	3.6	3.7	3.8	4.1	3.4	3.4	3.5	3.8	3.4	3.8 -
Mar	4.4	4.6	4.1	4.1	4.0	4.1	3.6	3.6	3.8	3.9	3.5	3.5	4.4	4.5	3.3	3.2
Apr	4.4	4.1	3.9	3.3	4.0	3.7	3.6	3.1	3.6	3.3	3.5	2.9	14.7	14.4	15.5 *	15.0 *
May	4.4	4.1	3.8	3.3	3.8	3.6	3.6	3.1	3.6	3.4	3.5	3.1	13.3	13.0	11.0	10.7
Jun	4.3	4.5	3.6	4.1	4.0	4.2	3.6	4.1	3.7	3.8	3.4	3.9 *	11.1	11.2	9.6	10.1
Jul	4.3	4.6	3.5	4.0	3.8	4.1	3.5	4.0	3.7	4.0	3.4	3.9	10.2	10.5	9.7	10.1
Aug	4.4	4.5	3.5	3.7	3.8	3.9	3.5	3.6	3.7	3.8	3.4	3.4	8.4	8.5	8.6 *	8.6 *
Sep	4.2	4.1	3.5	3.4	3.7	3.6	3.5	3.4	3.5	3.3	3.3	3.2	7.9	7.7	6.5	6.4
Oct	4.1	3.9	3.5	3.3	3.8	3.5	3.4	3.3	3.6	3.3	3.3	3.2	6.9	6.6	7.3 *	7.2 *
Nov	4.2	3.9	3.5	3.3	3.7	3.5	3.4	3.1	3.5	3.3	3.3	3.1	6.7	6.4	5.3	5.0
Dec	4.1	3.9	3.5	3.3	3.9	3.7	3.4	3.2	3.5	3.4	3.3	3.1				
Avg		4.4		3.8		3.9		3.5		3.7		3.4				

\* Designates when Tennessee's unemployment rate is greater than the U.S. rate

- Designates when Tennessee's unemployment rate is equal to the U.S. rate



## HOURS AND EARNINGS OF PRODUCTION WORKERS

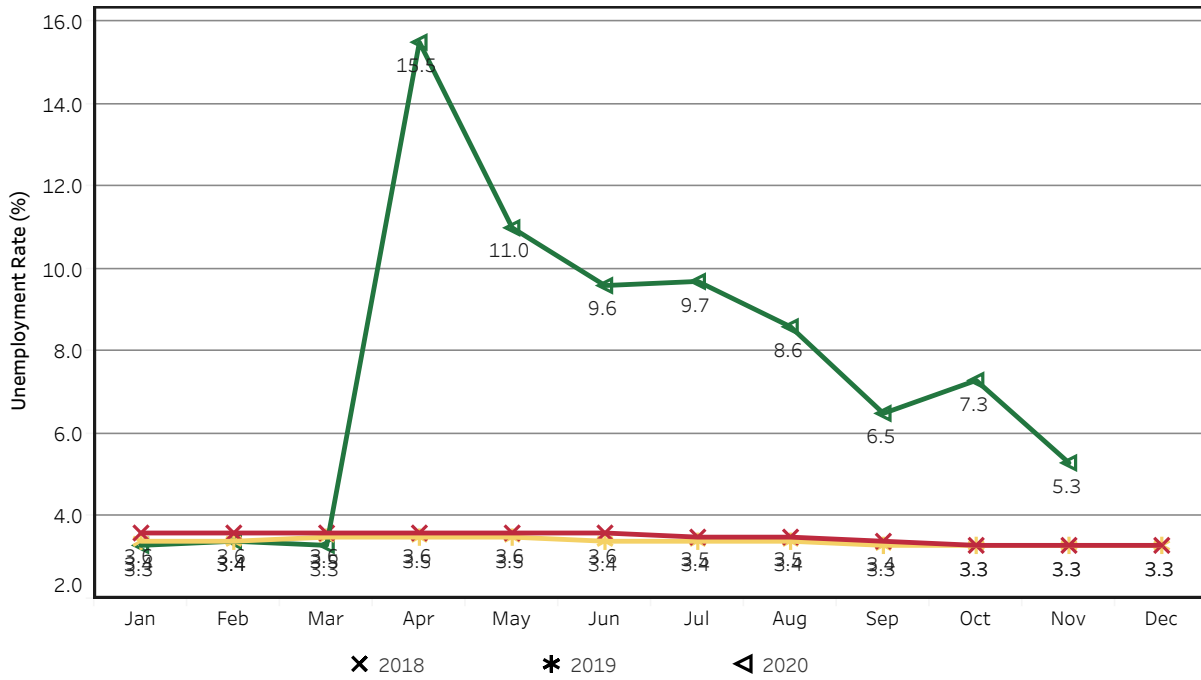
	Average Weekly Earning			Average Weekly Hours			Average Hourly Earning		
	November 2019	October 2020	November 2020	November 2019	October 2020	November 2020	November 2019	October 2020	November 2020
<b>Manufacturing</b>	\$844.61	\$809.13	\$859.88	42.4	39.8	41.5	\$19.92	\$20.33	\$20.72
<b>Durable Goods</b>	\$877.09	\$839.46	\$917.15	43.1	38.9	41.5	\$20.35	\$21.58	\$22.10
<b>Non-Durable Goods</b>	\$787.89	\$758.68	\$765.86	41.1	41.3	41.6	\$19.17	\$18.37	\$18.41

## HOURS AND EARNINGS OF PRODUCTION WORKERS - ALL MANUFACTURING

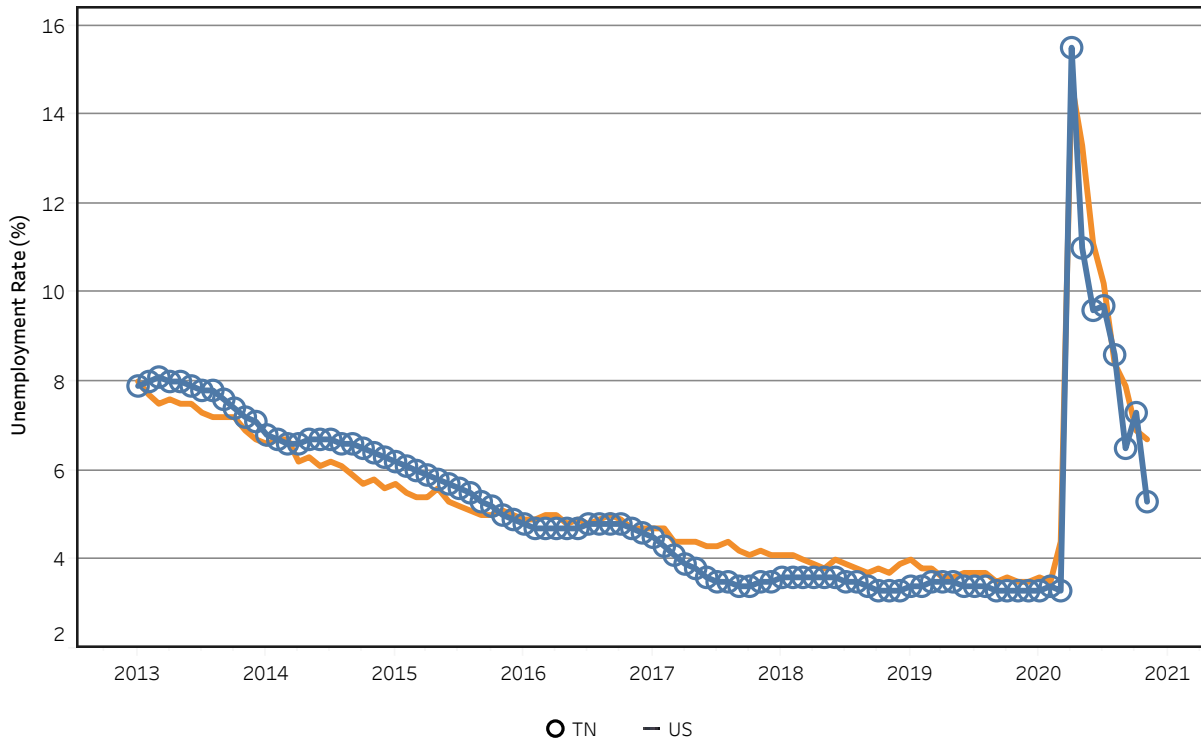
(ranked October 2020 preliminary average weekly earnings; November 2020 will be available later this month)

	Average Weekly Earning			Average Weekly Hours			Average Hourly Earning		
	October 2019	October 2020	Percent Change	October 2019	October 2020	Percent Change	October 2019	October 2020	Percent Change
<b>FLORIDA</b>	\$985.79	\$1021.10	3.6%	42.20	41.90	-0.7%	\$23.36	\$24.37	4.3%
<b>KENTUCKY</b>	\$892.68	\$975.86	9.3%	43.00	42.30	-1.6%	\$20.76	\$23.07	11.1%
<b>SOUTH CAROLINA</b>	\$882.30	\$942.20	6.8%	42.50	42.10	-0.9%	\$20.76	\$22.38	7.8%
<b>GEORGIA</b>	\$837.67	\$921.49	10.0%	42.20	42.90	1.7%	\$19.85	\$21.48	8.2%
<b>ALABAMA</b>	\$864.35	\$867.66	0.4%	43.50	42.70	-1.8%	\$19.87	\$20.32	2.3%
<b>VIRGINIA</b>	\$770.93	\$832.14	7.9%	39.80	40.20	1.0%	\$19.37	\$20.70	6.9%
<b>NORTH CAROLINA</b>	\$757.06	\$829.44	9.6%	40.90	43.20	5.6%	\$18.51	\$19.20	3.7%
<b>MISSISSIPPI</b>	\$844.40	\$825.27	-2.3%	40.00	38.60	-3.5%	\$21.11	\$21.38	1.3%
<b>TENNESSEE</b>	\$819.81	\$801.72	-2.2%	41.30	39.30	-4.8%	\$19.85	\$20.40	2.8%
<b>ARKANSAS</b>	\$775.20	\$734.48	-5.3%	41.70	38.80	-7.0%	\$18.59	\$18.93	1.8%

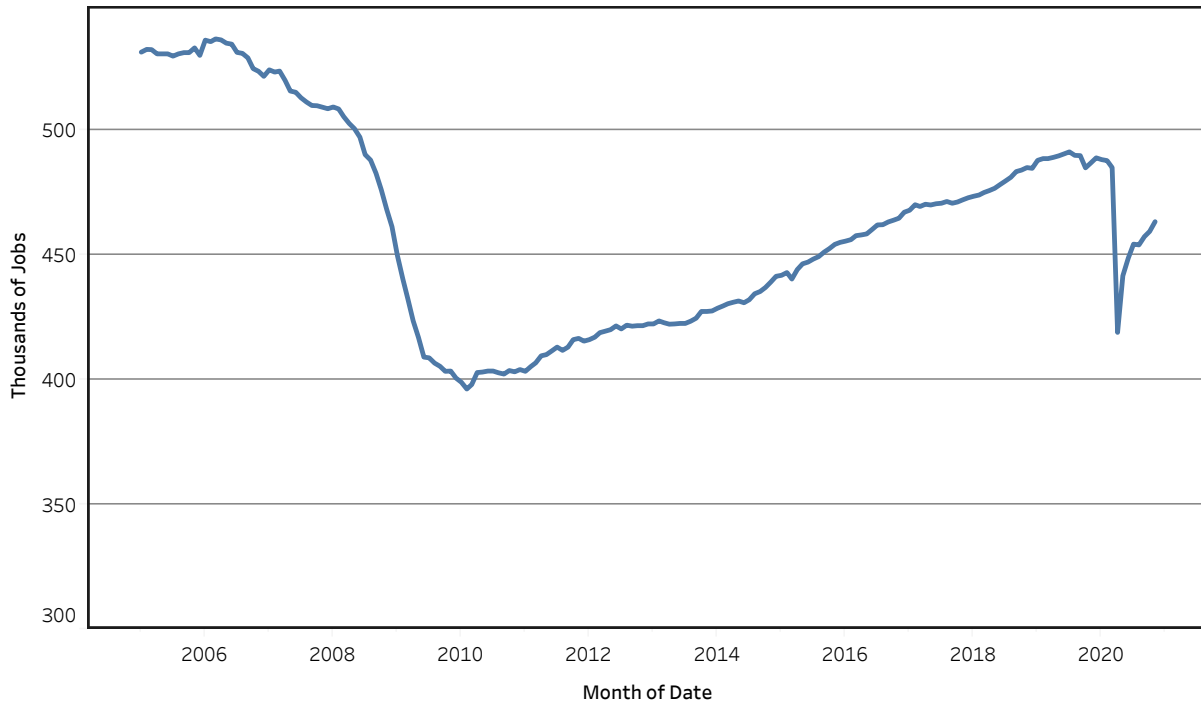
## Unemployment Rates - Tennessee Seasonally Adjusted - 2018 to 2020



## Unemployment Rates - US & Tennessee Seasonally Adjusted - January 2013 to November 2020



## Goods - Producing Jobs in Tennessee Seasonally Adjusted - Jan 2005 to Nov 2020



## Service - Providing Jobs in Tennessee Seasonally Adjusted - Jan 2005 to Nov 2020

