



The Labor Market Report

The Tennessee Department of Labor and Workforce Development

Phil Bredesen,
Governor

James G. Neeley,
Commissioner

May 2010 Data

County Population Estimates 2000 to 2009

Special Points of Interest:

- Population Estimates for Tennessee and counties from 2000 to 2009
- Tennessee Historical Civilian Labor Force Series, 1980 to Present
- County Unemployment Rates
- Civilian Labor Force Summary
- State Unemployment Insurance Activities

Inside This Issue:

Chattanooga MSA	7
Knoxville MSA	8
Memphis MSA	9
Nashville MSA	10
Smaller MSAs	11
Consumer Price Index	12

According to estimates published by the Bureau of the Census, the 2009 population of Tennessee was 6,296,254, up 55,798 (0.9 percent) from the previous July 1 estimate. (See the table on Page 2.)

The Population Division of the Census Bureau produces estimates of state and county populations each July 1. The methodology has remained unchanged for over two decades.

The most recent decennial census data from April 1, 2000, were used. The updated population estimates include births, deaths, internal migration, and international migration that have occurred from the census date to the date of the population estimate. For the net migration component, the bureau relies on the annual extract of tax returns to develop net migration rates for the population under age 65 for each county.

The largest county population increases in the past year were in Davidson County (up 7,503), Rutherford County (up 6,682), Montgomery County (up 5,483), Knox County (up 4,653), Wil-

liamson County (up 4,524), Sumner County (up 3,055), and Hamilton County (up 3,052). These seven counties had a total population increase of 34,952, or 62.6 percent of the entire state increase.

During the past year, Montgomery County had the largest percentage increase (up 3.5 percent), followed by Rutherford County (up 2.7 percent), Williamson County (up 2.6 percent), and Sumner County (up 2 percent).

There were 25 counties that had a population decline last year. Of those declines, however, nine were less than 50 persons. Lake County's population remained the same. Morgan County had the largest population decrease, declining by 830 persons from last year (down 4.2 percent). The next largest decline was 190 people in Hardeman County.

Since the 2000 Census Tennessee's population growth was 606,971 (10.7 percent). In the last 10 years, the largest county growth was in Rutherford County (up 75,025 or 41.2 percent). This was followed by Davidson County (up 65,819 or 11.6 percent), Knox County (up 53,693 or

14.1 percent), Williamson County (up 50,200 or 39.6 percent), and Hamilton County (up 29,279 or 9.5 percent).

When looking at the highest percent growth over the last 10 years seven of the top eight high-growth counties are suburban metro counties. The only non-metro county in this group is Bedford (Shelbyville) County, with a 22.2 percent growth rate. Rutherford (41.2 percent growth), Williamson (39.6 percent), Fayette (34.6 percent), and Wilson (26.5 percent) had the largest percent growth since the 2000 Census.

There were 20 counties that had a net decline in population since the census. The largest declines were Weakley County (down 1,436 people or -4.1 percent), Morgan County (down 1,019 people or -5.2 percent), Obion County (down 1,019 people or -3.1 percent), Carroll County (down 958 people or -3.3 percent), and Haywood County (down 916 people or -4.6 percent). Lake County had the largest percent decline (down 8.2 percent) even though its net population loss was not as great as the above listed counties.

Annual Estimates of Resident Population in Tennessee Counties

Counties	Population Estimates as of July 1				Census 2000	Counties	Population Estimates as of July 1				Census 2000
	2009	2008	2006	2002			2009	2008	2006	2002	
Tennessee	6,296,254	6,240,456	6,089,453	5,803,306	5,689,283	Lake	7,303	7,338	7,454	7,882	7,954
Anderson	74,849	74,182	72,810	71,354	71,330	Lauderdale	26,471	26,602	26,582	27,075	27,101
Bedford	45,947	45,384	43,444	39,185	37,586	Lawrence	41,314	41,060	40,595	40,492	39,926
Benton	16,025	16,071	16,139	16,479	16,537	Lewis	11,521	11,510	11,436	11,393	11,367
Bledsoe	12,967	13,114	12,867	12,457	12,367	Lincoln	33,374	33,156	32,434	31,616	31,340
Blount	122,784	121,622	118,037	109,512	105,823	Loudon	46,725	46,216	44,363	40,741	39,086
Bradley	97,710	96,644	93,804	89,557	87,965	McMinn	52,739	52,574	51,753	50,052	49,015
Campbell	40,970	40,781	40,505	39,839	39,854	McNairy	25,796	25,630	25,318	24,581	24,653
Cannon	13,860	13,834	13,266	12,961	12,826	Macon	22,057	22,007	21,544	20,771	20,386
Carroll	28,517	28,658	28,775	29,215	29,475	Madison	97,317	96,724	96,182	93,483	91,837
Carter	59,043	59,172	58,956	56,830	56,742	Marion	28,068	28,078	27,934	27,806	27,776
Cheatham	39,876	39,532	38,615	36,940	35,912	Marshall	30,279	30,015	28,716	27,291	26,767
Chester	16,312	16,284	15,978	15,857	15,540	Maury	84,302	82,727	77,860	71,265	69,498
Claiborne	31,243	31,289	30,964	30,038	29,862	Meigs	12,108	11,931	11,565	11,249	11,086
Clay	7,895	7,895	7,997	7,945	7,976	Monroe	45,830	45,670	43,820	40,234	38,961
Cocke	36,047	35,804	35,079	33,982	33,565	Montgomery	160,978	155,495	148,333	136,811	134,768
Coffee	52,521	52,173	51,400	49,013	48,014	Moore	6,096	6,114	5,985	5,911	5,740
Crockett	14,492	14,460	14,333	14,462	14,532	Morgan	18,738	19,568	19,306	19,994	19,757
Cumberland	54,109	53,765	52,263	48,597	46,802	Obion	31,431	31,565	31,618	32,229	32,450
Davidson	635,710	628,207	614,609	581,978	569,891	Overton	21,060	20,921	20,718	20,210	20,118
Decatur	11,525	11,537	11,364	11,604	11,731	Perry	7,826	7,774	7,607	7,543	7,631
DeKalb	18,954	18,898	18,423	17,734	17,423	Pickett	4,783	4,828	4,803	5,019	4,945
Dickson	48,230	47,915	46,439	44,344	43,156	Polk	15,648	15,770	15,780	16,007	16,050
Dyer	37,811	37,722	37,689	37,068	37,279	Putnam	72,431	71,369	68,834	64,205	62,315
Fayette	38,785	38,229	35,877	31,016	28,806	Rhea	31,516	31,069	30,249	28,829	28,400
Fentress	17,677	17,624	17,334	16,818	16,625	Roane	53,508	53,473	53,084	52,094	51,910
Franklin	41,310	41,189	40,888	39,964	39,270	Robertson	66,581	65,424	61,928	56,954	54,433
Gibson	49,468	49,148	48,022	47,908	48,152	Rutherford	257,048	250,366	231,510	196,074	182,023
Giles	29,082	29,174	29,054	29,365	29,447	Scott	21,866	21,944	21,820	21,532	21,127
Grainger	22,857	22,741	22,438	21,077	20,659	Sequatchie	13,915	13,672	13,125	11,772	11,370
Greene	66,282	66,090	65,391	63,426	62,909	Sevier	86,243	85,361	82,075	74,398	71,170
Grundy	14,130	14,243	14,295	14,256	14,332	Shelby	920,232	919,137	919,179	902,605	897,472
Hamblen	63,033	62,515	60,875	58,395	58,128	Smith	19,201	19,130	18,663	18,096	17,712
Hamilton	337,175	334,123	328,551	314,524	307,896	Stewart	13,340	13,257	12,886	12,679	12,370
Hancock	6,588	6,607	6,599	6,748	6,786	Sullivan	154,552	154,039	152,505	152,605	153,048
Hardeman	27,613	27,803	27,779	28,071	28,105	Sumner	158,759	155,704	148,547	136,009	130,449
Hardin	26,258	26,255	25,990	25,811	25,578	Tipton	59,495	58,841	56,460	53,064	51,271
Hawkins	57,784	57,459	56,552	54,505	53,563	Trousdale	7,922	7,816	7,531	7,287	7,259
Haywood	18,881	19,030	19,299	19,547	19,797	Unicoi	17,740	17,737	17,693	17,612	17,667
Henderson	27,037	26,981	26,523	25,767	25,522	Union	19,164	19,118	18,787	18,402	17,808
Henry	31,876	31,751	31,399	31,258	31,115	Van Buren	5,480	5,488	5,350	5,491	5,508
Hickman	23,805	23,877	23,518	23,050	22,295	Warren	40,481	40,162	39,652	38,691	38,276
Houston	8,154	8,123	7,936	7,985	8,088	Washington	120,598	118,874	114,895	109,294	107,198
Humphreys	18,274	18,221	18,098	17,935	17,929	Wayne	16,506	16,519	16,664	16,965	16,842
Jackson	10,875	10,934	10,841	11,092	10,984	Weakley	33,459	33,379	33,336	34,208	34,895
Jefferson	51,722	51,323	49,229	45,737	44,294	White	25,444	25,230	24,592	23,554	23,102
Johnson	18,006	18,063	17,922	17,720	17,499	Williamson	176,838	172,314	159,540	136,335	126,638
Knox	435,725	431,072	417,230	392,935	382,032	Wilson	112,377	110,242	103,446	93,035	88,809

Note: All geographic boundaries for the 2009 population estimates series are defined as of January 1, 2009.

Source: U.S. Census Bureau, Population Division. Release Date: March 2010.

Statewide

HISTORICAL CIVILIAN LABOR FORCE

UNEMPLOYMENT RATES BY COUNTY*

(NUMBERS IN THOUSANDS)

MONTHLY DATA NOT SEASONALLY ADJUSTED

Year and Month	Civilian Labor Force							Unemployed Number	Rate (%)
	Total	Employment	Employed						
			Total	Nonfarm Employment					
			**Manu- facturing	**Trade	**Services				
1980	2,071.6	1,920.1	1,746.6	502.1	379.7	291.0	151.5	7.3 %	
1981	2,123.1	1,927.6	1,775.4	506.9	379.9	304.4	195.5	9.2	
1982	2,141.2	1,891.5	1,703.0	466.7	380.5	313.1	249.7	11.7	
1983	2,188.2	1,932.4	1,719.0	468.6	389.9	323.4	255.8	11.7	
1984	2,233.5	2,026.4	1,812.0	497.1	413.3	344.3	207.1	9.3	
1985	2,255.7	2,070.0	1,867.8	492.4	435.3	360.2	185.7	8.2	
1986	2,291.3	2,110.7	1,929.8	490.5	452.1	384.7	180.6	7.9	
1987	2,324.1	2,166.5	2,011.6	497.4	477.2	408.9	157.6	6.8	
1988	2,333.6	2,197.2	2,092.1	511.9	495.6	440.3	136.4	5.8	
1989	2,364.9	2,241.3	2,167.2	524.5	508.4	467.2	123.6	5.2	
1990	2,401.1	2,269.0	2,193.2	493.4	379.1	611.0	132.1	5.5	
1991	2,425.4	2,266.0	2,183.6	480.3	373.0	626.7	159.4	6.6	
1992	2,479.5	2,316.7	2,245.0	492.8	374.1	664.8	162.8	6.6	
1993	2,543.3	2,391.6	2,328.5	502.8	382.5	709.8	151.7	6.0	
1994	2,645.7	2,511.1	2,423.0	513.8	398.4	751.4	134.6	5.1	
1995	2,718.0	2,574.0	2,498.9	518.0	412.6	795.0	144.0	5.3	
1996	2,758.4	2,611.0	2,533.3	501.5	420.9	814.3	147.4	5.3	
1997	2,788.3	2,640.0	2,584.0	498.0	430.5	849.7	148.3	5.3	
1998	2,811.7	2,685.2	2,638.4	498.6	437.1	875.7	126.5	4.5	
1999	2,838.7	2,722.1	2,685.3	494.7	443.6	900.8	116.6	4.1	
2000	2,871.5	2,756.5	2,728.9	488.1	447.5	930.9	115.0	4.0	
2001	2,863.5	2,728.5	2,688.3	454.2	446.6	921.5	135.0	4.7	
2002	2,867.1	2,715.0	2,664.4	428.5	438.7	938.0	152.1	5.3	
2003	2,896.1	2,731.4	2,667.5	414.1	440.8	950.3	164.8	5.7	
2004	2,906.9	2,748.6	2,706.1	411.8	447.5	978.7	158.3	5.4	
2005	2,938.9	2,775.6	2,743.1	408.8	454.6	1,005.6	163.3	5.6	
2006	3,008.3	2,854.0	2,783.1	400.1	460.6	1,030.4	154.4	5.1	
2007	3,021.9	2,873.6	2,797.4	380.0	463.5	1,052.8	148.3	4.9	
2008	3,050.3	2,846.1	2,774.8	361.0	457.0	1,058.2	204.2	6.7	
2009	3,020.0	2,703.0	2,618.9	309.1	428.1	1,025.1	317.0	10.5	
2010									
January	2,980.7	2,639.6	2,550.2	298.5	420.4	998.3	341.1	11.4 %	
February	2,978.1	2,648.4	2,560.1	299.7	419.7	1,007.0	329.6	11.1	
March	2,999.5	2,676.0	2,584.1	301.5	425.1	1,019.7	323.5	10.8	
April (r)	3,022.0	2,712.5	2,605.8	302.6	428.5	1,032.6	309.5	10.2	
May (p)	3,023.6	2,724.4	2,630.1	303.6	430.2	1,041.8	299.2	9.9	
June									
July									
August									
September									
October									
November									
December									

(r)=revised

**These industries not comparable to industry employment data before

(p)=preliminary

1990 because of changes to NAICS coding system.

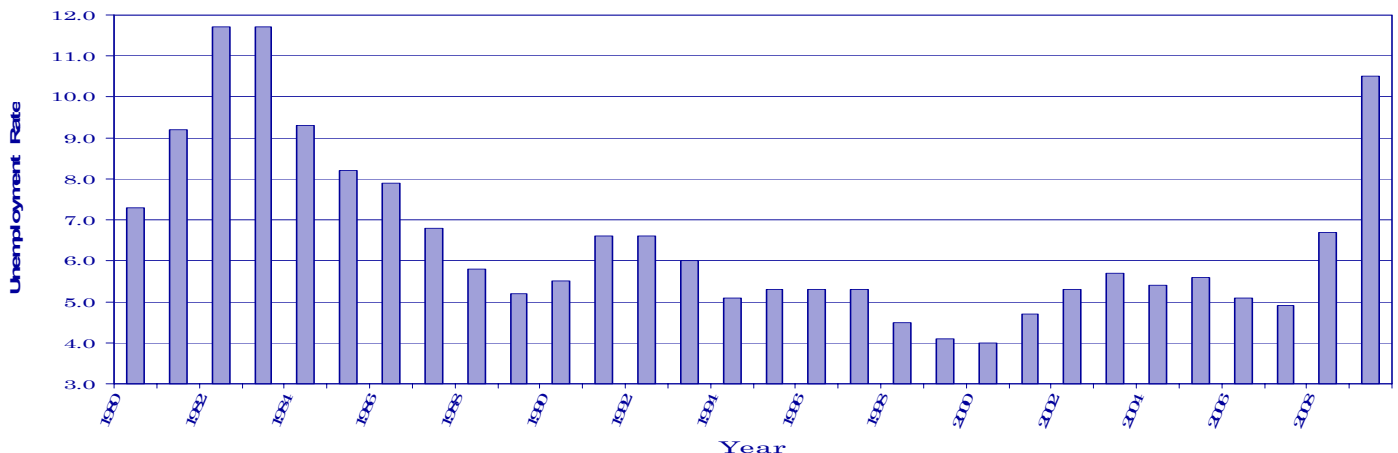
Trade = Wholesale and Retail Trade

Services = Professional/Business Services, Educational/Health Services, Leisure/Hospitality, and Other Services.

County	May 2009	May 2010	County	May 2009	May 2010
Anderson	10.3	9.2	Lauderdale	18.9	15.9
Bedford	11.8	12.1	Lawrence	14.6	14.6
Benton	13.8	12.5	Lewis	15.0	14.7
Bledsoe	13.8	12.5	Lincoln	6.8	6.6
Blount	10.1	8.2	Loudon	9.6	7.9
Bradley	9.4	9.1	Macon	12.6	10.0
Campbell	13.0	12.2	Madison	10.9	10.4
Cannon	12.5	8.4	Marion	12.4	10.6
Carroll	15.8	15.3	Marshall	16.1	16.7
Carter	10.0	9.4	Maury	11.8	15.1
Cheatham	9.4	10.0	McMinn	14.7	12.3
Chester	10.8	9.4	McNairy	14.7	12.1
Claiborne	12.2	11.0	Meigs	14.8	12.4
Clay	14.5	12.3	Monroe	18.4	13.6
Cocke	13.4	12.7	Montgomery	8.9	10.2
Coffee	10.9	10.5	Moore	9.0	10.1
Crockett	12.4	12.4	Morgan	11.7	11.2
Cumberland	10.6	10.3	Obion	10.1	9.7
Davidson	8.8	8.9	Overton	13.9	10.7
Decatur	12.7	12.0	Perry	25.2	15.5
DeKalb	10.6	10.0	Pickett	14.1	13.6
Dickson	11.7	10.1	Polk	12.7	11.3
Dyer	14.9	12.2	Putnam	9.6	9.2
Fayette	10.9	11.3	Rhea	13.6	12.9
Fentress	12.7	11.7	Roane	9.4	8.1
Franklin	10.6	10.2	Robertson	10.2	9.5
Gibson	14.7	13.6	Rutherford	10.2	9.2
Giles	14.4	13.5	Scott	18.3	19.8
Grainger	13.9	13.5	Sequatchie	12.8	10.5
Greene	16.2	13.2	Sevier	9.8	9.5
Grundy	13.9	11.9	Shelby	9.8	10.0
Hamblen	12.9	10.9	Smith	12.6	10.5
Hamilton	9.1	8.6	Stewart	12.4	11.3
Hancock	13.1	14.7	Sullivan	9.2	8.9
Hardeman	12.4	13.9	Sumner	10.2	9.2
Hardin	12.5	10.8	Tipton	12.3	10.8
Hawkins	12.9	9.4	Trousdale	12.4	10.5
Haywood	16.2	15.4	Unicoi	12.2	9.7
Henderson	18.0	15.6	Union	10.9	8.6
Henry	13.2	11.6	Van Buren	14.4	12.6
Hickman	12.9	13.2	Warren	13.9	11.6
Houston	12.8	11.4	Washington	8.7	8.5
Humphreys	13.0	11.2	Wayne	13.1	12.3
Jackson	13.8	11.5	Weakley	11.6	10.8
Jefferson	12.5	12.2	White	15.1	12.5
Johnson	11.9	12.4	Williamson	7.0	7.6
Knox	8.1	7.7	Wilson	9.2	8.5
Lake	10.9	10.7			

*Data Not Seasonally Adjusted

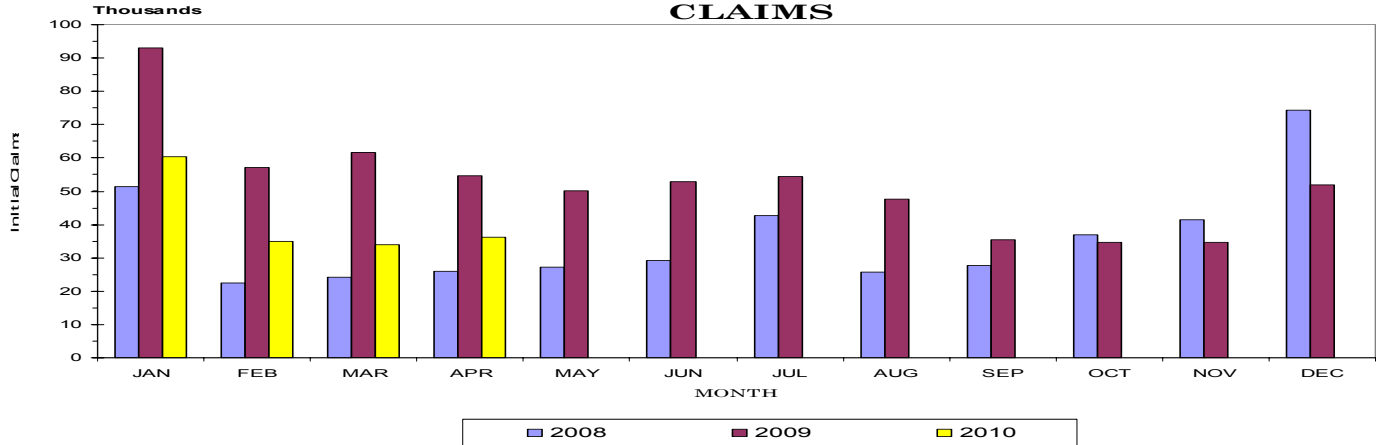
Unemployment Rates 1980-2009



Statewide

UNEMPLOYMENT INSURANCE ACTIVITIES (MOST RECENT AVAILABLE)

MONTHLY INITIAL CLAIMS

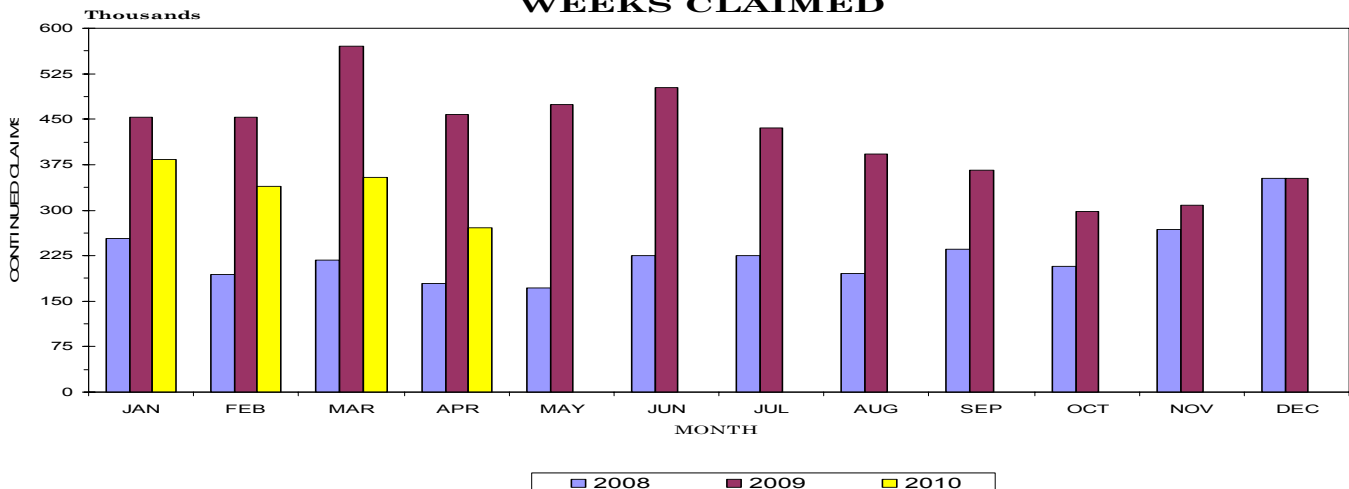


BENEFIT PROGRAMS (MOST RECENT AVAILABLE)

STATE BENEFIT PROGRAM				FEDERAL BENEFIT PROGRAMS			
CLAIMS	Apr. 2009	Mar. 2010	Apr. 2010	FORMER FEDERAL EMPLOYEES	Apr. 2009	Mar. 2010	Apr. 2010
Initial Claims	54,586	33,887	36,189	Benefits Paid	\$385,177	\$281,369	\$207,378
Continued Weeks Claimed	457,949	354,727	271,171	Benefit Weeks Claimed	1,435	1,055	746
Nonmonetary Determinations	8,858	8,478	7,647	Initial Claims	165	79	95
Appeals Decisions	2,157	3,292	3,287	Continued Weeks Claimed	1,521	1,067	827
Lower Authority	1,751	2,897	2,628	Appeals Decisions	8	5	12
Higher Authority	406	395	659				
BENEFITS				FORMER MILITARY PERSONNEL			
Amount Paid	\$97,055,760	\$71,155,978	\$52,305,952	Benefits Paid	\$479,445	\$562,238	\$464,055
Benefit Weeks Paid	456,413	361,019	257,096	Benefit Weeks Claimed	1,538	1,830	1,466
Average Weekly Benefit Amount	\$229	\$219	\$220	Initial Claims	145	164	263
First Payments	22,647	16,506	12,880	Continued Weeks Claimed	1,572	1,834	1,573
Final Payments	12,817	11,722	10,413	Appeals Decisions	4	5	5
Average Weeks Duration	14	19	19				
Trust Fund Balance*	\$253,386,413	-\$8,444,560	\$218,205,245				

CONTINUED WEEKS CLAIMED (MOST RECENT AVAILABLE)

MONTHLY CONTINUED WEEKS CLAIMED



Statewide

ESTIMATED NONFARM EMPLOYMENT (in thousands)

Industry	May 2009	Revised April 2010	Preliminary May 2010	Net Change		
				May 2009	Apr. 2010	May 2010
Total Nonfarm	2,629.9	2,605.8	2,630.1	0.2	24.3	
Total Private	2,195.3	2,170.7	2,185.3	-10.0	14.6	
Goods Producing	418.6	404.5	407.1	-11.5	2.6	
Mining, Logging, & Construction	110.0	101.9	103.5	-6.5	1.6	
Manufacturing	308.6	302.6	303.6	-5.0	1.0	
Durable Goods Manufacturing	180.9	173.8	174.3	-6.6	0.5	
Wood Product Manufacturing	11.1	10.6	10.8	-0.3	0.2	
Nonmetallic Mineral Product Manufacturing	11.6	10.7	10.6	-1.0	-0.1	
Primary Metal Manufacturing	8.7	8.9	8.9	0.2	0.0	
Fabricated Metal Product Manufacturing	33.3	34.1	34.2	0.9	0.1	
Machinery Manufacturing	26.1	25.3	25.5	-0.6	0.2	
Computer & Electronic Product Manufacturing	6.4	5.4	5.3	-1.1	-0.1	
Electrical Equipment & Appliance Manufacturing	17.8	17.3	17.5	-0.3	0.2	
Transportation Equipment Manufacturing	39.8	37.5	37.6	-2.2	0.1	
Furniture & Related Product Manufacturing	11.0	9.6	9.5	-1.5	-0.1	
Miscellaneous Manufacturing	15.1	14.4	14.4	-0.7	0.0	
Nondurable Goods Manufacturing	127.7	128.8	129.3	1.6	0.5	
Textile Mills, Products, & Apparel	12.6	11.9	12.0	-0.6	0.1	
Food Manufacturing	32.1	32.4	32.5	0.4	0.1	
Beverage & Tobacco Product Manufacturing	5.1	5.1	5.1	0.0	0.0	
Paper Manufacturing	16.0	15.5	15.6	-0.4	0.1	
Printing & Related Support Activities	13.7	12.2	12.1	-1.6	-0.1	
Chemical Manufacturing	25.8	25.1	25.2	-0.6	0.1	
Plastics & Rubber Products Manufacturing	20.5	19.8	20.1	-0.4	0.3	
Plastics Product Manufacturing	11.2	10.9	11.0	-0.2	0.1	
Rubber Product Manufacturing	9.3	8.9	9.1	-0.2	0.2	
Service Providing	2,211.3	2,201.3	2,223.0	11.7	21.7	
Trade, Transportation, & Utilities	557.5	551.6	554.1	-3.4	2.5	
Wholesale Trade	121.5	118.9	119.9	-1.6	1.0	
Merchant Wholesalers, Durable Goods	60.7	59.7	60.4	-0.3	0.7	
Merchant Wholesalers, Nondurable Goods	44.0	41.7	41.8	-2.2	0.1	
Wholesale Electronic Markets	16.8	17.5	17.7	0.9	0.2	
Retail Trade	304.9	309.6	310.3	5.4	0.7	
Motor Vehicle & Parts Dealers	37.1	35.6	35.6	-1.5	0.0	
Furniture & Home Furnishings Stores	7.9	7.4	7.4	-0.5	0.0	
Building Material, Garden Equipment, & Supplies	26.8	26.6	27.0	0.2	0.4	
Food & Beverage Stores	49.3	49.2	49.4	0.1	0.2	
Health & Personal Care Stores	22.7	23.1	23.2	0.5	0.1	
Gasoline Stations	21.4	21.4	21.5	0.1	0.1	
Clothing & Clothing Accessories Stores	24.5	23.9	24.0	-0.5	0.1	
Sporting Goods, Hobby, Book, & Music Stores	10.9	10.4	10.4	-0.5	0.0	
General Merchandise Stores	71.0	71.2	71.6	0.6	0.4	
Miscellaneous Store Retailers	15.8	15.2	15.4	-0.4	0.2	
Nonstore Retailers	8.6	8.7	8.5	-0.1	-0.2	
Transportation, Warehousing, & Utilities	131.1	123.1	123.9	-7.2	0.8	
Utilities	3.6	3.6	3.6	0.0	0.0	
Transportation & Warehousing	127.5	119.5	120.3	-7.2	0.8	
Truck Transportation	51.4	48.3	48.0	-3.4	-0.3	
Information	47.5	45.7	45.6	-1.9	-0.1	
Financial Activities	140.9	136.3	136.7	-4.2	0.4	
Finance & Insurance	107.6	102.4	102.3	-5.3	-0.1	
Real Estate, Rental, & Leasing	33.3	33.9	34.4	1.1	0.5	
Professional & Business Services	291.2	295.8	301.0	9.8	5.2	
Professional, Scientific, & Technical Services	105.7	104.8	105.1	-0.6	0.3	
Management of Companies & Enterprises	26.0	26.6	26.6	0.6	0.0	
Administrative, Support, & Waste Management	159.5	164.4	169.3	9.8	4.9	
Educational & Health Services	365.1	374.1	370.3	5.2	-3.8	
Educational Services	43.8	47.7	44.5	0.7	-3.2	
Health Care & Social Assistance	321.3	326.4	325.8	4.5	-0.6	
Ambulatory Health Care Services	121.5	125.4	125.1	3.6	-0.3	
Hospitals	102.1	102.9	102.8	0.7	-0.1	
Nursing & Residential Care Facilities	55.6	57.1	56.9	1.3	-0.2	
Social Assistance	42.1	41.0	41.0	-1.1	0.0	
Leisure & Hospitality	271.7	260.8	268.0	-3.7	7.2	
Arts, Entertainment, & Recreation	32.7	29.2	33.9	1.2	4.7	
Accommodation & Food Services	239.0	231.6	234.1	-4.9	2.5	
Accommodation	33.1	31.9	32.1	-1.0	0.2	
Food Services & Drinking Places	205.9	199.7	202.0	-3.9	2.3	
Other Services	102.8	101.9	102.5	-0.3	0.6	
Government	434.6	435.1	444.8	10.2	9.7	
Federal Government	51.2	51.7	61.8	10.6	10.1	
State Government	98.2	99.5	98.0	-0.2	-1.5	
State Government Educational Services	48.8	48.7	47.1	-1.7	-1.6	
Local Government	285.2	283.9	285.0	-0.2	1.1	
Local Government Educational Services	148.4	148.3	148.3	-0.1	0.0	
State and Local Government	383.4	383.4	383.0	-0.4	-0.4	

NONFARM EMPLOYMENT AND LABOR FORCE IN TENNESSEE

Total nonfarm employment increased by 200 jobs from May 2009 to May 2010. During this period, there were large seasonal increases in federal government (up 10,600 jobs); administrative/support/waste management (up 9,800 jobs); retail trade (up 5,400 jobs); educational/health services (up 5,200 jobs), which includes an increase of 4,500 jobs in health care/social assistance; and arts/entertainment/recreation (up 1,200 jobs). This was almost entirely offset by decreases in transportation/warehousing (down 7,200 jobs); mining/logging/construction (down 6,500 jobs); finance/insurance (down 5,300 jobs); accommodation/food services (down 4,900 jobs), which includes a drop of 3,900 jobs in food services/drinking places; transportation equipment manufacturing and nondurable goods wholesalers (both down 2,200 jobs); and information (down 1,900 jobs).

During May, nonfarm employment increased by 24,300 jobs. The largest seasonal increases were in federal government (up 10,100 jobs); leisure/hospitality (up 7,200 jobs), which includes an increase of 4,700 jobs in arts/entertainment/recreation and 2,500 jobs in accommodation/food services; professional/business services (up 5,200 jobs), which includes an increase of 4,900 jobs in administrative/support/waste management; mining/logging/construction (up 1,600 jobs); and local government (up 1,100 jobs). This was partially offset by decreases in educational/health services (down 3,800 jobs), which includes a decrease of 3,200 jobs in educational services; and state government educational services (down 1,600 jobs).

Tennessee's seasonally adjusted estimated unemployment rate for May 2010 was 10.4 percent, down 0.1 percentage point from the April 2010 rate. This is the 37th consecutive month that the current rate is greater than or equal to the national average.

The United States' unemployment rate was 9.7 percent in May 2010. In May 2009, the national unemployment rate was 9.4 percent, and the state's unemployment rate was 10.7 percent.

Across Tennessee, the unemployment rate decreased in 86 counties, increased in seven counties, and remained the same in two counties. There were 25 counties with an unemployment rate less than 10 percent and eight counties had a rate above 15 percent. The lowest rate occurred in Lincoln County at 6.6 percent, down 0.5 percent from the previous month. The highest rate was Scott County's 19.8 percent, down from 20.2 percent in April 2010.

The data from all the nonfarm employment estimates tables include all full- and part-time nonfarm wage and salary employees who worked during or received pay for any part of the pay period that includes the 12th of the month. This is a count of jobs by place of work. Agricultural workers, proprietors, self-employed persons, workers in private households, and unpaid family workers are excluded. These numbers may not add due to rounding. Data is based on the 2009 benchmark.

CIVILIAN LABOR FORCE

CIVILIAN LABOR FORCE SUMMARY

	May 2009				April 2009				May 2010			
	Labor Force	Employment	Unemployed	Rate	Labor Force	Employment	Unemployed	Rate	Labor Force	Employment	Unemployed	Rate
Seasonally Adjusted												
U.S.	154,956,000	140,438,000	14,518,000	9.4	154,715,000	139,455,000	15,260,000	9.9	154,393,000	139,420,000	14,973,000	9.7
TENNESSEE	3,030,300	2,704,900	325,500	10.7	3,028,300	2,710,300	318,000	10.5	3,038,600	2,723,300	315,300	10.4
Not Seasonally Adjusted												
U.S.	154,336,000	140,363,000	13,973,000	9.1	153,911,000	139,302,000	14,609,000	9.5	153,866,000	139,497,000	14,369,000	9.3
TENNESSEE	3,019,600	2,704,600	315,000	10.4	3,022,000	2,712,500	309,500	10.2	3,023,600	2,724,400	299,200	9.9
Metropolitan Statistical Areas												
Chattanooga	254,600	230,470	24,120	9.5	257,110	233,910	23,200	9.0	255,970	233,580	22,390	8.7
Clarksville	111,030	99,680	11,350	10.2	111,780	100,590	11,190	10.0	112,740	100,870	11,870	10.5
Cleveland	54,610	49,220	5,390	9.9	54,340	49,080	5,270	9.7	54,400	49,300	5,100	9.4
Jackson	55,590	49,530	6,060	10.9	55,940	49,960	5,970	10.7	55,790	50,070	5,720	10.2
Johnson City	99,490	90,140	9,350	9.4	100,620	91,140	9,470	9.4	101,050	92,050	9,000	8.9
Kingsport-Bristol	147,580	133,250	14,330	9.7	146,450	132,950	13,500	9.2	146,620	133,720	12,900	8.8
Knoxville	357,580	326,080	31,510	8.8	362,220	331,420	30,800	8.5	363,190	334,310	28,880	8.0
Memphis	609,110	549,720	59,390	9.7	605,200	542,400	62,800	10.4	604,790	543,250	61,550	10.2
Morristown	64,120	55,840	8,280	12.9	63,330	55,420	7,910	12.5	63,420	55,910	7,510	11.8
Nashville	795,420	720,870	74,550	9.4	797,150	723,520	73,630	9.2	798,260	726,580	71,680	9.0
Micropolitan Statistical Areas												
Brownsville	9,130	7,650	1,480	16.2	9,360	7,850	1,510	16.2	9,310	7,880	1,430	15.4
Cookeville	50,320	44,850	5,470	10.9	50,830	45,680	5,150	10.1	50,040	45,180	4,860	9.7
Crossville	23,140	20,690	2,460	10.6	22,950	20,510	2,440	10.6	23,020	20,640	2,380	10.3
Dyersburg	17,610	14,980	2,630	14.9	17,330	15,180	2,150	12.4	17,200	15,090	2,110	12.2
Greeneville	29,290	24,560	4,740	16.2	29,410	25,300	4,110	14.0	29,240	25,370	3,870	13.2
Humboldt	21,420	18,270	3,150	14.7	21,440	18,390	3,050	14.2	21,320	18,420	2,900	13.6
Lawrenceburg	16,800	14,350	2,450	14.6	16,460	13,960	2,500	15.2	16,330	13,950	2,390	14.6
Lewisburg	12,350	10,360	1,990	16.1	12,170	10,060	2,110	17.3	12,110	10,090	2,020	16.7
Martin	15,600	13,790	1,810	11.6	15,840	14,030	1,810	11.4	15,900	14,180	1,720	10.8
McMinnville	17,120	14,740	2,370	13.9	16,740	14,670	2,070	12.4	16,730	14,800	1,930	11.6
Paris	13,560	11,770	1,790	13.2	13,610	11,920	1,700	12.5	13,530	11,960	1,570	11.6
Shelbyville	22,580	19,920	2,650	11.8	22,090	19,390	2,710	12.2	22,080	19,410	2,670	12.1
Tullahoma	47,970	42,840	5,130	10.7	48,110	42,910	5,200	10.8	47,880	42,920	4,960	10.4
Union City	17,700	15,830	1,870	10.6	17,820	15,960	1,860	10.4	17,840	15,990	1,850	10.4

HOURS AND EARNINGS OF PRODUCTION WORKERS

	AVERAGE WEEKLY EARNINGS			AVERAGE HOURLY EARNINGS			AVERAGE WEEKLY HOURS		
	May	Apr.	May	May	Apr.	May	May	Apr.	May
	2009	2010	2010	2009	2010	2010	2009	2010	2010
Manufacturing	\$588.35	\$610.90	\$616.86	\$14.82	\$14.90	\$14.90	39.7	41.0	41.4
Durable Goods Manufacturing	\$580.16	\$612.65	\$612.54	\$15.03	\$15.24	\$14.94	38.6	40.2	41.0
Nondurable Goods Manufacturing	\$600.92	\$608.16	\$621.15	\$14.55	\$14.48	\$14.86	41.3	42.0	41.8

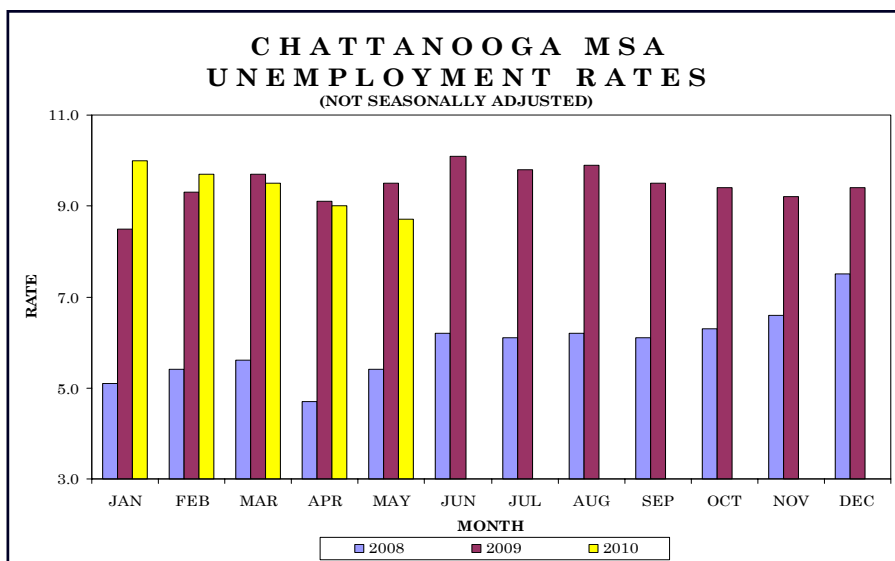
**ALL EMPLOYEE HOURS AND EARNINGS

	AVERAGE WEEKLY EARNINGS			AVERAGE HOURLY EARNINGS			AVERAGE WEEKLY HOURS		
	Apr.	Mar.	Apr.	Apr.	Mar.	Apr.	Apr.	Mar.	Apr.
	2009	2010	2010	2009	2010	2010	2009	2010	2010
Total Private	\$676.65	\$695.20	\$702.55	\$19.50	\$19.75	\$19.79	34.7	35.2	35.5
Goods Producing	\$800.70	\$877.71	\$894.98	\$20.69	\$21.46	\$21.36	38.7	40.9	41.9
Mining, Logging and Construction	\$732.37	\$731.64	\$741.63	\$20.12	\$20.38	\$19.99	36.4	35.9	37.1
Manufacturing	\$824.37	\$926.55	\$946.13	\$20.87	\$21.75	\$21.75	39.5	42.6	43.5
Private Service Providing	\$646.03	\$653.25	\$659.84	\$19.17	\$19.27	\$19.35	33.7	33.9	34.1
Trade, Transportation, and Utilities	\$659.65	\$653.56	\$662.16	\$19.01	\$18.41	\$18.60	34.7	35.5	35.6
Information	\$813.54	\$838.08	\$844.18	\$22.35	\$23.28	\$23.32	36.4	36.0	36.2
Financial Activities	\$775.26	\$786.99	\$812.15	\$21.24	\$21.74	\$22.19	36.5	36.2	36.6
Professional and Business Services	\$808.47	\$824.01	\$831.26	\$22.52	\$22.70	\$22.65	35.9	36.3	36.7
Education and Health Services	\$704.18	\$707.28	\$722.16	\$20.59	\$21.05	\$21.24	34.2	33.6	34.0
Leisure and Hospitality	\$298.45	\$309.72	\$303.24	\$11.22	\$11.60	\$11.40	26.6	26.7	26.6
Other Services	\$551.38	\$547.47	\$540.13	\$16.41	\$16.54	\$16.22	33.6	33.1	33.3

**This data is one month behind

Total nonfarm employment increased by 400 jobs from April 2010 to May 2010. There were seasonal increases in federal government (up 900 jobs), leisure/hospitality (up 600 jobs), and transportation/warehousing/utilities (up 400 jobs). This was partially offset by declines in educational/health services (down 700 jobs), state government (down 600 jobs), and local government (down 200 jobs).

During the past 12 months, nonfarm jobs increased by 1,100. During that time, goods-producing jobs increased by 300 and service-providing jobs increased by 800.



CIVILIAN LABOR FORCE SUMMARY

	May 2009				April 2010				May 2010			
	Labor Force	Employment	Unemployed	Rate	Labor Force	Employment	Unemployed	Rate	Labor Force	Employment	Unemployed	Rate
Athens Micro	23,610	20,130	3,470	14.7	23,240	20,210	3,020	13.0	23,150	20,300	2,850	12.3
Chattanooga City	78,190	70,450	7,740	9.9	79,740	71,900	7,840	9.8	79,440	71,940	7,510	9.4

ESTIMATED NONFARM EMPLOYMENT (in thousands)

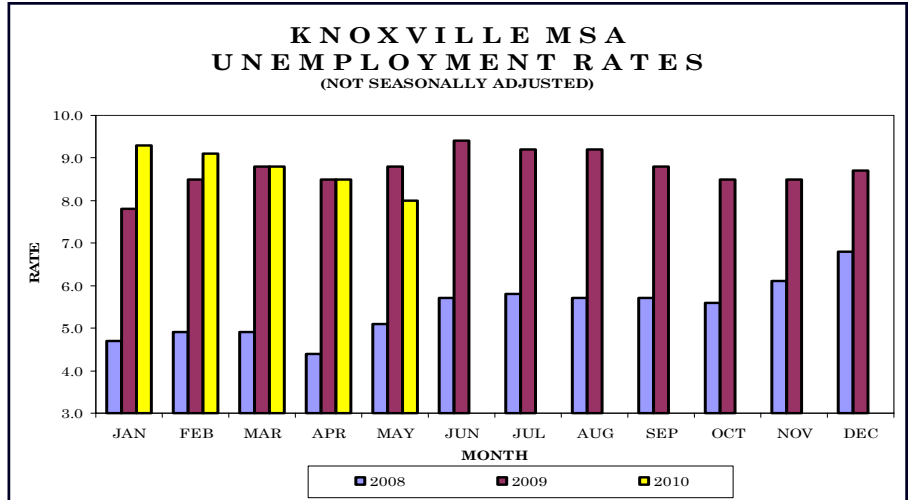
Industry	May 2009	Revised April 2010	Preliminary May 2010	Net Change	
				May 2009 May 2010	Apr. 2010 May 2010
Total Nonfarm	227.3	228.0	228.4	1.1	0.4
Total Private	192.4	191.8	192.1	-0.3	0.3
Goods Producing	36.5	36.6	36.8	0.3	0.2
Mining, Logging, & Construction	8.5	9.0	9.1	0.6	0.1
Manufacturing	28.0	27.6	27.7	-0.3	0.1
Durable Goods Manufacturing	12.6	12.1	12.1	-0.5	0.0
Nondurable Goods Manufacturing	15.4	15.5	15.6	0.2	0.1
Service Providing	190.8	191.4	191.6	0.8	0.2
Trade, Transportation, & Utilities	48.3	47.2	47.5	-0.8	0.3
Wholesale Trade	8.2	7.9	7.9	-0.3	0.0
Retail Trade	24.3	25.0	24.9	0.6	-0.1
Transportation, Warehousing, & Utilities	15.8	14.3	14.7	-1.1	0.4
Information	3.7	3.6	3.5	-0.2	-0.1
Financial Activities	18.2	17.7	17.6	-0.6	-0.1
Professional & Business Services	21.9	21.2	21.3	-0.6	0.1
Educational & Health Services	29.8	31.7	31.0	1.2	-0.7
Leisure & Hospitality	23.3	23.3	23.9	0.6	0.6
Other Services	10.7	10.5	10.5	-0.2	0.0
Government	34.9	36.2	36.3	1.4	0.1
Federal Government	5.8	6.1	7.0	1.2	0.9
State Government	5.9	6.6	6.0	0.1	-0.6
Local Government	23.2	23.5	23.3	0.1	-0.2
State and Local Government	29.1	30.1	29.3	0.2	-0.8



Knoxville MSA - Anderson, Blount, Knox, Loudon, Union

Total nonfarm employment increased by 3,500 jobs from April 2010 to May 2010. There were seasonal increases in federal government (up 1,200 jobs), professional/business services (up 1,100 jobs), leisure/hospitality (up 600 jobs), local government (up 400 jobs), transportation/warehousing/utilities (up 300 jobs), and mining/logging/construction (up 200 jobs). This was partially offset by a decline in state government (down 600 jobs).

During the past 12 months, nonfarm employment increased by 2,700 jobs. During that time, goods-producing jobs decreased by 1,300, while service-providing jobs increased by 4,000.



CIVILIAN LABOR FORCE SUMMARY

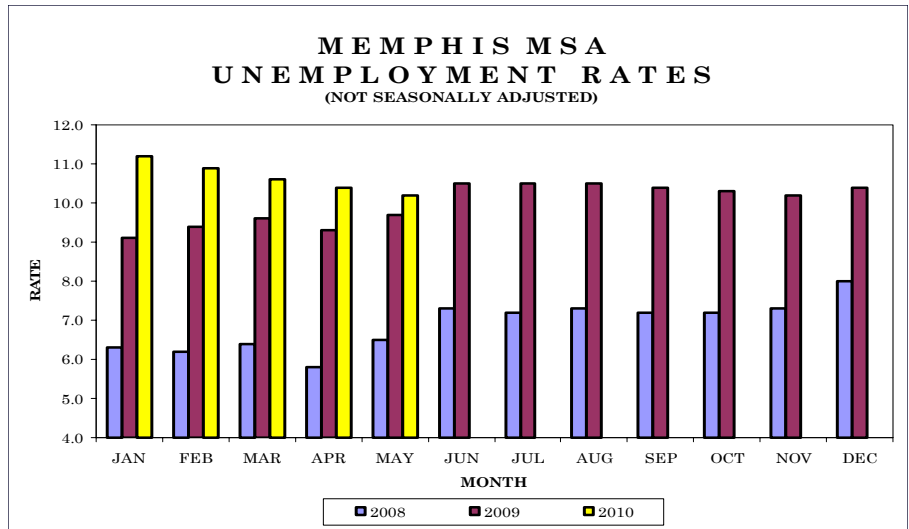
	May 2009				April 2010				May 2010			
	Labor Force	Employment	Unemployed	Rate	Labor Force	Employment	Unemployed	Rate	Labor Force	Employment	Unemployed	Rate
Harriman Micro	27,250	24,700	2,560	9.4	27,650	25,270	2,380	8.6	27,690	25,440	2,260	8.1
LaFollette Micro	17,000	14,790	2,210	13.0	16,800	14,680	2,110	12.6	16,860	14,810	2,060	12.2
Newport Micro	16,550	14,330	2,220	13.4	16,340	14,150	2,190	13.4	16,430	14,340	2,090	12.7
Sevierville Micro	48,710	43,940	4,770	9.8	48,560	43,480	5,090	10.5	49,090	44,410	4,680	9.5
Knoxville City	92,880	84,100	8,780	9.5	94,450	85,480	8,970	9.5	94,680	86,230	8,450	8.9
Maryville City	13,010	11,700	1,310	10.1	13,080	11,890	1,190	9.1	13,050	12,000	1,050	8.1
Oak Ridge City	13,270	12,130	1,140	8.6	13,510	12,330	1,180	8.7	13,590	12,440	1,150	8.5

ESTIMATED NONFARM EMPLOYMENT (in thousands)

Industry	May 2009	Revised April 2010	Preliminary May 2010	Net Change	
				May 2009 - May 2010	Apr. 2010 - May 2010
Total Nonfarm	321.3	320.5	324.0	2.7	3.5
Total Private	270.0	269.4	271.9	1.9	2.5
Goods Producing	45.7	44.1	44.4	-1.3	0.3
Mining, Logging, & Construction	16.1	15.4	15.6	-0.5	0.2
Manufacturing	29.6	28.7	28.8	-0.8	0.1
Durable Goods Manufacturing	21.9	21.3	21.4	-0.5	0.1
Nondurable Goods Manufacturing	7.7	7.4	7.4	-0.3	0.0
Service Providing	275.6	276.4	279.6	4.0	3.2
Trade, Transportation, & Utilities	66.3	67.0	67.3	1.0	0.3
Wholesale Trade	16.1	15.6	15.7	-0.4	0.1
Retail Trade	40.5	42.1	42.0	1.5	-0.1
Transportation, Warehousing, & Utilities	9.7	9.3	9.6	-0.1	0.3
Information	5.5	5.4	5.4	-0.1	0.0
Financial Activities	17.4	17.0	17.1	-0.3	0.1
Professional & Business Services	41.1	42.7	43.8	2.7	1.1
Educational & Health Services	44.4	44.5	44.5	0.1	0.0
Leisure & Hospitality	35.0	34.3	34.9	-0.1	0.6
Other Services	14.6	14.4	14.5	-0.1	0.1
Government	51.3	51.1	52.1	0.8	1.0
Federal Government	5.3	5.3	6.5	1.2	1.2
State Government	16.1	16.6	16.0	-0.1	-0.6
Local Government	29.9	29.2	29.6	-0.3	0.4
State and Local Government	46.0	45.8	45.6	-0.4	-0.2

Total nonfarm employment increased by 2,400 jobs from April 2010 to May 2010. There were increases in federal government (up 2,200 jobs), trade/transportation/utilities (up 400 jobs), leisure/hospitality (up 300 jobs), and professional/business services (up 200 jobs). This was partially offset by declines in state government (down 700 jobs) and educational/health services (down 400 jobs).

During the past 12 months, nonfarm employment decreased by 15,500 jobs. During that time, goods-producing jobs decreased by 2,900, while service-providing jobs declined by 12,600.



CIVILIAN LABOR FORCE SUMMARY

	May 2009				April 2010				May 2010			
	Labor Force	Employment	Unemployed	Rate	Labor Force	Employment	Unemployed	Rate	Labor Force	Employment	Unemployed	Rate
Bartlett City	25,560	23,670	1,890	7.4	25,470	23,410	2,060	8.1	25,470	23,460	2,010	7.9
Collierville City	19,920	18,460	1,470	7.4	19,630	18,250	1,380	7.0	19,660	18,290	1,370	7.0
Germantown City	19,170	17,920	1,250	6.5	19,030	17,720	1,310	6.9	18,990	17,760	1,230	6.5
Memphis City	306,000	273,540	32,450	10.6	304,050	270,510	33,540	11.0	304,070	271,060	33,000	10.9

ESTIMATED NONFARM EMPLOYMENT (in thousands)

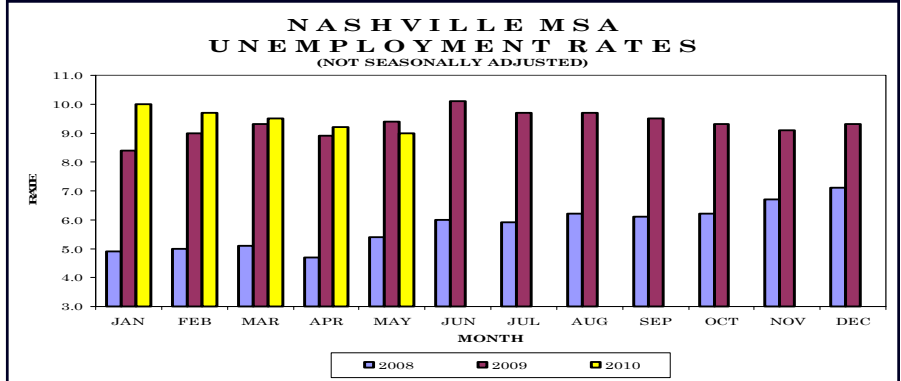
Industry	May 2009	Revised	Preliminary	Net Change	
		April 2010	May 2010	May 2009	Apr. 2010
	2009	2010	2010	May 2010	May 2010
Total Nonfarm	603.9	586.0	588.4	-15.5	2.4
Total Private	514.4	497.4	498.2	-16.2	0.8
Goods Producing	68.0	64.9	65.1	-2.9	0.2
Mining, Logging, & Construction	21.5	20.1	20.2	-1.3	0.1
Manufacturing	46.5	44.8	44.9	-1.6	0.1
Durable Goods Manufacturing	23.0	21.6	21.6	-1.4	0.0
Nondurable Goods Manufacturing	23.5	23.2	23.3	-0.2	0.1
Service Providing	535.9	521.1	523.3	-12.6	2.2
Trade, Transportation, & Utilities	161.0	156.2	156.6	-4.4	0.4
Wholesale Trade	33.2	32.0	32.1	-1.1	0.1
Retail Trade	65.5	64.2	64.3	-1.2	0.1
Transportation, Warehousing, & Utilities	62.3	60.0	60.2	-2.1	0.2
Information	6.9	6.7	6.7	-0.2	0.0
Financial Activities	31.1	30.2	30.2	-0.9	0.0
Professional & Business Services	74.9	71.3	71.5	-3.4	0.2
Professional, Scientific, & Technical Services	18.1	17.8	17.9	-0.2	0.1
Management of Companies & Enterprises	5.6	5.6	5.6	0.0	0.0
Administrative, Support, & Waste Management	51.2	47.9	48.0	-3.2	0.1
Educational & Health Services	80.1	80.6	80.2	0.1	-0.4
Leisure & Hospitality	67.3	63.3	63.6	-3.7	0.3
Other Services	25.1	24.2	24.3	-0.8	0.1
Government	89.5	88.6	90.2	0.7	1.6
Federal Government	15.3	15.4	17.6	2.3	2.2
State Government	14.4	14.9	14.2	-0.2	-0.7
Local Government	59.8	58.3	58.4	-1.4	0.1
State and Local Government	74.2	73.2	72.6	-1.6	-0.6



Nashville MSA — Cannon, Cheatham, Davidson, Dickson, Hickman, Macon, Robertson, Rutherford, Smith, Sumner, Trousdale, Williamson, Wilson

Total nonfarm employment increased by 4,900 jobs from April 2010 to May 2010. There were seasonal increases in professional/business services (up 2,100 jobs), which includes increases of 1,200 jobs in administrative/support/waste management and 800 jobs in professional/scientific/technical services; federal government (up 2,000 jobs); retail trade (up 600 jobs); durable goods manufacturing (up 400 jobs); transportation/warehousing/utilities, local government, and health care/social assistance (each up 300 jobs); and leisure/hospitality (up 200 jobs). This was partially offset by declines in educational services (down 800 jobs) and state government (down 700 jobs).

During the past 12 months, nonfarm employment decreased by 5,500 jobs. During that time, goods-producing jobs decreased by 5,600, while service-providing jobs increased by 100.



CIVILIAN LABOR FORCE SUMMARY

	May 2009				April 2010				May 2010			
	Labor Force	Employment	Unemployed	Rate	Labor Force	Employment	Unemployed	Rate	Labor Force	Employment	Unemployed	Rate
Columbia Micro	37,160	32,770	4,390	11.8	35,610	30,170	5,440	15.3	35,320	29,990	5,330	15.1
Brentwood City	16,970	15,920	1,050	6.2	17,170	15,980	1,190	6.9	17,140	16,050	1,090	6.4
Columbia City	15,060	13,140	1,920	12.7	14,530	12,090	2,440	16.8	14,420	12,020	2,400	16.6
Franklin City	30,620	28,470	2,150	7.0	31,100	28,580	2,520	8.1	31,110	28,700	2,410	7.7
Gallatin City	13,560	11,910	1,650	12.1	13,400	11,960	1,440	10.7	13,390	12,010	1,380	10.3
Hendersonville	25,320	23,130	2,190	8.6	25,400	23,220	2,180	8.6	25,410	23,320	2,090	8.2
LaVergne City	17,110	15,310	1,800	10.5	17,060	15,370	1,690	9.9	17,030	15,430	1,600	9.4
Murfreesboro City	53,970	48,400	5,570	10.3	53,990	48,580	5,410	10.0	53,950	48,790	5,160	9.6
Nashville City	319,760	291,640	28,120	8.8	321,430	292,720	28,710	8.9	322,660	293,960	28,710	8.9
Smyrna City	20,890	18,560	2,330	11.2	20,710	18,630	2,080	10.1	20,820	18,710	2,110	10.1
Spring Hill City	13,230	12,130	1,100	8.3	13,190	11,800	1,390	10.5	13,170	11,810	1,370	10.4

ESTIMATED NONFARM EMPLOYMENT (in thousands)

Industry	May 2009	Revised	Preliminary	Net Change	
		April 2010	May 2010	May 2009	Apr. 2010
	2009	2010	2010	May 2010	May 2010
Total Nonfarm	726.3	715.9	720.8	-5.5	4.9
Total Private	619.4	608.0	611.3	-8.1	3.3
Goods Producing	93.8	87.8	88.2	-5.6	0.4
Mining, Logging, & Construction	31.6	28.9	28.9	-2.7	0.0
Manufacturing	62.2	58.9	59.3	-2.9	0.4
Durable Goods Manufacturing	40.0	37.1	37.5	-2.5	0.4
Nondurable Goods Manufacturing	22.2	21.8	21.8	-0.4	0.0
Service Providing	632.5	628.1	632.6	0.1	4.5
Trade, Transportation, & Utilities	146.1	142.9	143.9	-2.2	1.0
Wholesale Trade	36.1	35.3	35.4	-0.7	0.1
Retail Trade	82.1	81.6	82.2	0.1	0.6
Transportation, Warehousing, & Utilities	27.9	26.0	26.3	-1.6	0.3
Information	20.3	19.7	19.8	-0.5	0.1
Financial Activities	44.5	43.4	43.5	-1.0	0.1
Professional & Business Services	91.6	92.0	94.1	2.5	2.1
Professional, Scientific, & Technical Services	37.3	36.7	37.5	0.2	0.8
Management of Companies & Enterprises	9.7	10.0	10.1	0.4	0.1
Administrative, Support, & Waste Management	44.6	45.3	46.5	1.9	1.2
Educational & Health Services	114.7	116.7	116.2	1.5	-0.5
Educational Services	21.2	22.5	21.7	0.5	-0.8
Health Care & Social Assistance	93.5	94.2	94.5	1.0	0.3
Leisure & Hospitality	78.1	75.5	75.7	-2.4	0.2
Other Services	30.3	30.0	29.9	-0.4	-0.1
Government	106.9	107.9	109.5	2.6	1.6
Federal Government	12.7	12.8	14.8	2.1	2.0
State Government	29.4	30.2	29.5	0.1	-0.7
Local Government	64.8	64.9	65.2	0.4	0.3
State and Local Government	94.2	95.1	94.7	0.5	-0.4

Nonfarm Employment (Smaller MSAs)

	Clarksville, TN-KY MSA		***Cleveland, TN MSA		Jackson, TN MSA	
	April 2010 Revised	May 2010 Prelim.	April 2010 Revised	May 2010 Prelim.	April 2010 Revised	May 2010 Prelim.
Total Nonfarm	81,700	82,200	39,000	39,400	57,200	57,600
Total Private	62,300	62,800	33,500	33,700	44,700	45,000
Goods Producing	12,700	12,800	9,700	9,700	11,100	11,200
Mining, Logging, & Construction	3,100	3,200	1,300	1,300	2,500	2,600
Manufacturing	9,600	9,600	8,400	8,400	8,600	8,600
Service Providing	69,000	69,400	29,300	29,700	46,100	46,400
Trade, Transportation, & Utilities	15,100	15,200	6,500	6,500	11,000	11,100
Wholesale Trade	1,900	1,900	800	800	2,600	2,700
Retail Trade	11,000	11,000	4,500	4,500	7,000	7,000
Transportation, Warehousing, & Utilities	2,200	2,300	1,200	1,200	1,400	1,400
Information	1,000	1,000	300	300	700	700
Financial Activities	2,600	2,600	1,500	1,500	1,700	1,700
Professional & Business Services	8,400	8,500	2,900	2,900	3,800	3,900
Educational & Health Services	10,200	10,200	5,900	5,900	8,900	8,800
Leisure & Hospitality	9,000	9,200	4,100	4,300	5,400	5,500
Other Services	3,300	3,300	2,600	2,600	2,100	2,100
Government	19,400	19,400	5,500	5,700	12,500	12,600
Federal Government	6,500	6,800	300	500	600	700
State Government	3,200	2,900	700	700	1,900	1,900
Local Government	9,700	9,700	4,500	4,500	10,000	10,000
State and Local Government	12,900	12,600	5,200	5,200	11,900	11,900

	Johnson City, TN MSA		Kingsport/Bristol, TN-VA MSA		***Morristown, TN MSA	
	April 2010 Revised	May 2010 Prelim.	April 2010 Revised	May 2010 Prelim.	April 2010 Revised	May 2010 Prelim.
Total Nonfarm	77,600	78,600	116,200	117,100	44,600	45,100
Total Private	60,000	60,600	99,500	99,900	37,400	37,600
Goods Producing	10,600	10,600	26,800	26,900	12,500	12,600
Mining, Logging, & Construction	2,600	2,600	6,300	6,400	1,700	1,800
Manufacturing	8,000	8,000	20,500	20,500	10,800	10,800
Service Providing	67,000	68,000	89,400	90,200	32,100	32,500
Trade, Transportation, & Utilities	13,000	13,200	22,800	22,900	9,900	10,000
Wholesale Trade	2,300	2,300	4,400	4,400	1,800	1,800
Retail Trade	9,600	9,700	14,700	14,700	5,800	5,800
Transportation, Warehousing, & Utilities	1,100	1,200	3,700	3,800	2,300	2,400
Information	2,000	2,000	2,200	2,200	500	500
Financial Activities	4,400	4,400	4,200	4,200	1,200	1,200
Professional & Business Services	6,800	6,900	8,000	8,000	3,000	3,000
Educational & Health Services	12,700	12,800	19,100	19,000	5,700	5,600
Leisure & Hospitality	7,900	8,100	12,000	12,300	3,200	3,300
Other Services	2,600	2,600	4,400	4,400	1,400	1,400
Government	17,600	18,000	16,700	17,200	7,200	7,500
Federal Government	2,800	3,100	1,100	1,600	400	600
State Government	6,500	6,500	2,200	2,200	1,300	1,300
Local Government	8,300	8,400	13,400	13,400	5,500	5,600
State and Local Government	14,800	14,900	15,600	15,600	6,800	6,900

*** These metro areas had their funding restored by BLS, effective June 2009

Clarksville MSA is Montgomery County, Stewart County, Christian County, KY, & Trigg County, KY. **Cleveland MSA** is Bradley & Polk counties. **Jackson MSA** is Chester & Madison counties. **Johnson City MSA** is Carter, Unicoi, & Washington counties. **Kingsport-Bristol MSA** is Hawkins County, Sullivan County, Scott County, VA, Washington County, VA, & Bristol City, VA. **Morristown MSA** is Grainger, Hamblen, & Jefferson counties.

Tennessee Department of Labor & Workforce Development
 Employment Security Division, Research & Statistics
 220 French Landing Drive
 Nashville, TN 37243

FIRST CLASS MAIL
 POSTAGE & FEES PAID
 BUREAU OF
 LABOR STATISTICS
 PERMIT NO. G-738

Phone: 615-741-2284
 Fax: 615-532-9434
 E-mail: wayne.meisels@tn.gov



The Tennessee Department of Labor and Workforce Development is committed to principles of equal opportunity, equal access, and affirmative action. Auxiliary aids and services are available upon request to individuals with disabilities. Tennessee Department of Labor and Workforce Development; Authorization 337607; This public document was promulgated for electronic use only.

We're on the Web
www.tennessee.gov/labor-wfd
 Check out The Source at
www.sourcetn.org



The Tennessee Department of Labor and Workforce Development is an equal opportunity employer/program. Auxiliary aids and services are available upon request. TTY: 615-532-2879 or 1-800-848-0299

U.S. Consumer Price Index May 2010

Group	Index	Percent Change	
		Yearly	Monthly
U.S. City Average			
All Items (1982-84=100) / All Urban Consumers	218.178	0.1	2.0
All Items (1982-84=100) / Wage Earners & Clerical Workers	214.124	0.1	2.6
South			
All Items (1982-84=100) / All Urban Consumers	211.423	0.0	2.0
All Items (1982-84=100) / Wage Earners & Clerical Workers	208.920	0.0	2.7

