



# Tennessee Labor Market Report

Bill Lee  
Governor

Deniece Thomas  
Commissioner

January  
2023

## Highlights

**Pages 1:** Data and information about the labor force status of women

**Page 2:** Tennessee annual average labor force statistics, and January county unemployment rates

**Pages 3-4:** Monthly Tennessee nonfarm employment, and MSA and city labor force data

**Pages 5-8:** Monthly nonfarm employment statistics for the four largest MSA's and graphs of the unemployment rates

**Page 9:** Monthly nonfarm employment for each small MSA in Tennessee

**Page 10:** Monthly consumer price index and hours and earnings for all workers by industry and production workers in manufacturing, graphs of Tennessee unemployment and labor force participation rates

## Women in the Labor Force

Across the United States, women participated in the labor force at a rate of 56.8 percent in 2022, and increase from 56.1 percent in 2021. In 1948, the first year for which we have labor force statistics for women, the participation rate was only 32.7 percent. Labor force participation among women surged in the following decades, peaking at 60.0 percent in 1999.

Going back to 2003, widowed, divorced or separated women have historically had a lower participation rate than never married women or those married with a spouse present. In 2022 widowed, divorced, or separated women had a labor force participation rate of 43.9 percent. Never married women had a participation rate of 64.7 percent while it stood at 57.9 percent for those married with a spouse present.

In Tennessee, in 2021, the labor force participation rate for women was 52.9 percent and the unemployment rate was 4.5 percent. Married women with a spouse present had a participation rate of 54.2 percent and an unemployment rate of only 2.5 percent. The participation rate for women who maintain families was higher at 58.7 percent, however unemployment was also higher at a rate of 5.7 percent.

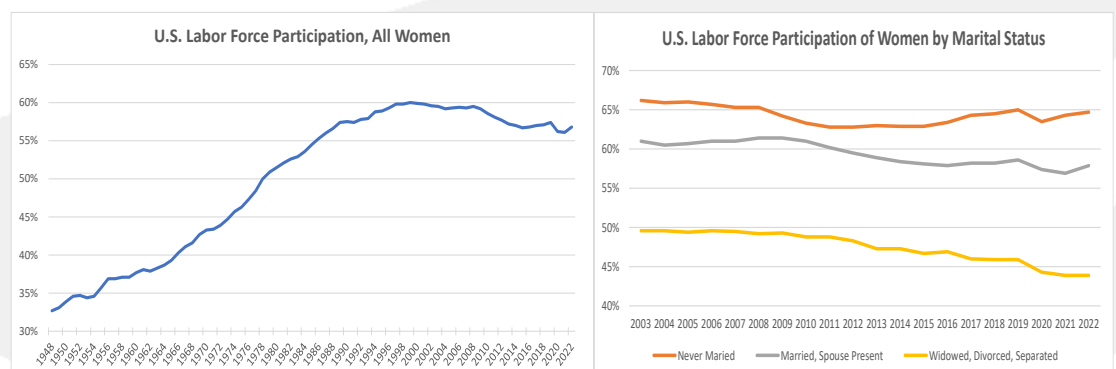
At just over 1.2 million, women accounted for 44.6 percent of full-time workers in Tennessee in 2021. Women were 64.7 percent of all part-time workers in Tennessee at 319,000.

Across all industries, 33.3 percent of women workers were employed in the education and health services sector. Wholesale and retail trade followed distantly at 13.3 percent. Only one percent of women workers were employed in the information industry, 2.3 percent in construction, and 6.2 percent in manufacturing.

Among Tennessee women who were employed but absent from work in 2021, 42.1 percent were on vacation while 21 percent were absent due to childcare issues. Another 19.3 percent of employed women were absent due to illness.

For additional U.S. labor force statistics go to: <https://www.bls.gov/cps/data.htm>

Additional Tennessee labor force statistics can be found here: <https://www.bls.gov/opub/geographic-profile/>



# Tennessee Civilian Labor Workforce 1992-Present

# County Unemployment Rates\*

(NUMBERS IN THOUSANDS)

MONTHLY DATA NOT SEASONALLY ADJUSTED

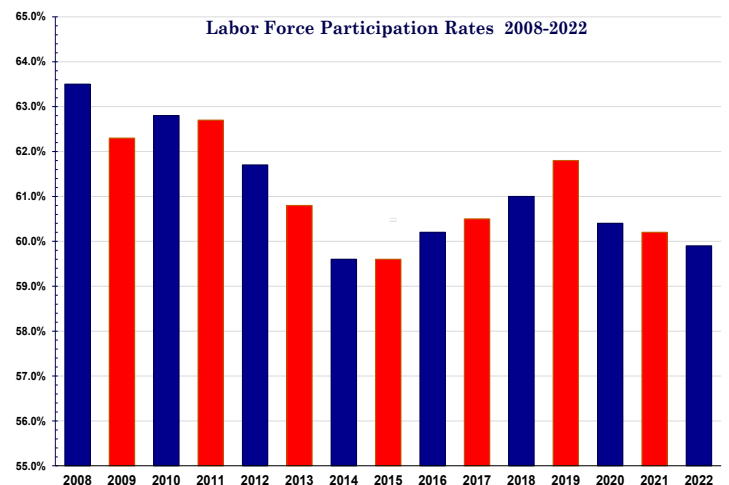
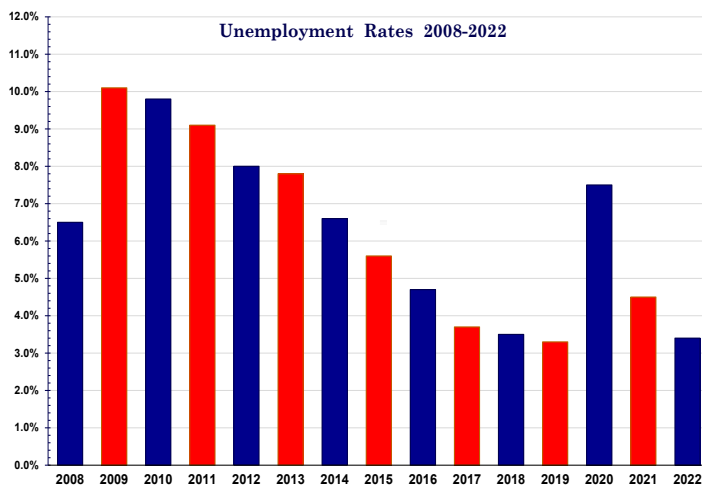
Year and Month	Civilian noninstitutional population	Civilian Labor Force					
		Total	Participation Rate (%)	Employed		Unemployed	
				Total	Rate (%)	Total	Rate (%)
1993	3,936.5	2,534.5	64.4%	2,386.9	60.6%	147.6	5.8%
1994	4,003.3	2,657.2	66.4%	2,529.6	63.2%	127.6	4.8%
1995	4,075.6	2,723.1	66.8%	2,582.9	63.4%	140.3	5.2%
1996	4,150.1	2,763.2	66.6%	2,620.2	63.1%	143.0	5.2%
1997	4,218.9	2,780.6	65.9%	2,634.2	62.4%	146.4	5.3%
1998	4,272.7	2,810.1	65.8%	2,688.5	62.9%	121.6	4.3%
1999	4,317.6	2,843.0	65.8%	2,730.1	63.2%	112.9	4.0%
2000	4,358.4	2,849.0	65.4%	2,738.8	62.8%	110.2	3.9%
2001	4,401.2	2,857.7	64.9%	2,728.6	62.0%	129.0	4.5%
2002	4,444.9	2,898.9	65.2%	2,750.4	61.9%	148.5	5.1%
2003	4,492.3	2,904.6	64.7%	2,744.4	61.1%	160.2	5.5%
2004	4,541.6	2,897.8	63.8%	2,742.9	60.4%	154.9	5.3%
2005	4,610.1	2,898.5	62.9%	2,738.2	59.4%	160.3	5.5%
2006	4,692.4	3,014.7	64.2%	2,856.1	60.9%	158.7	5.3%
2007	4,760.1	3,043.3	63.9%	2,901.9	61.0%	141.3	4.6%
2008	4,821.7	3,060.8	63.5%	2,862.1	59.4%	198.7	6.5%
2009	4,868.4	3,032.7	62.3%	2,725.1	56.0%	307.5	10.1%
2010	4,925.4	3,093.1	62.8%	2,789.1	56.6%	304.1	9.8%
2011	4,973.5	3,117.5	62.7%	2,833.3	57.0%	284.2	9.1%
2012	5,020.4	3,096.3	61.7%	2,849.7	56.8%	246.6	8.0%
2013	5,064.6	3,078.9	60.8%	2,840.1	56.1%	238.8	7.8%
2014	5,109.9	3,043.6	59.6%	2,842.5	55.6%	201.0	6.6%
2015	5,159.2	3,074.2	59.6%	2,902.7	56.3%	171.5	5.6%
2016	5,213.9	3,136.4	60.2%	2,987.7	57.3%	148.7	4.7%
2017	5,284.9	3,197.0	60.5%	3,077.5	58.2%	119.5	3.7%
2018	5,342.7	3,257.1	61.0%	3,143.9	58.8%	113.3	3.5%
2019	5,397.4	3,335.3	61.9%	3,223.6	59.8%	113.3	3.5%
2020	5,466.9	3,303.2	60.4%	3,056.7	55.9%	246.5	7.5%
2021	5,523.4	3,323.5	60.4%	3,174.1	57.8%	149.4	4.3%
2022	5,595.3	3,352.0	59.9%	3,238.6	57.9%	113.5	3.4%
2023 January (p)	5,643.3	3,332.9	59.1%	3,214.8	57.0%	118.2	3.5%

County	Jan	Jan	County	Jan	Jan
	2022	2023		2022	2023
Anderson	3.4	3.4	Lauderdale	4.9	5.2
Bedford	3.4	3.4	Lawrence	3.5	3.7
Benton	4.7	4.7	Lewis	3.7	4.0
Bledsoe	5.1	5.9	Lincoln	3.4	3.5
Blount	3.4	3.4	Loudon	3.2	3.2
Bradley	4.2	3.6	Macon	3.0	3.2
Campbell	4.3	4.5	Madison	3.7	3.6
Cannon	2.7	2.8	Marion	4.3	4.2
Carroll	4.2	4.6	Marshall	3.3	3.2
Carter	3.7	3.8	Maury	3.3	2.9
Cheatham	2.8	2.7	McMinn	4.1	4.5
Chester	3.0	3.3	McNairy	4.8	4.8
Claiborne	3.9	4.4	Meigs	4.5	5.1
Clay	5.5	4.7	Monroe	3.4	3.6
Cocke	7.4	7.0	Montgomery	3.9	3.8
Coffee	3.4	3.3	Moore	2.3	2.5
Crockett	3.5	3.8	Morgan	3.9	4.7
Cumberland	5.1	5.2	Obion	4.3	4.3
Davidson	3.2	2.7	Overton	3.8	4.3
Decatur	5.3	6.1	Perry	10.0	9.9
DeKalb	3.9	4.0	Pickett	4.4	4.5
Dickson	3.0	3.1	Polk	4.0	4.3
Dyer	3.9	3.8	Putnam	3.4	3.7
Fayette	3.7	3.5	Rhea	4.2	5.1
Fentress	4.0	4.3	Roane	3.7	3.8
Franklin	3.7	3.6	Robertson	2.8	2.9
Gibson	3.8	3.8	Rutherford	2.9	2.7
Giles	3.5	3.4	Scott	5.1	5.3
Grainger	4.1	4.3	Sequatchie	4.7	4.2
Greene	4.4	5.0	Sevier	5.3	5.7
Grundy	4.8	4.4	Shelby	5.2	4.5
Hamblen	4.1	4.0	Smith	3.1	3.3
Hamilton	4.1	3.3	Stewart	4.3	4.1
Hancock	4.3	4.5	Sullivan	3.6	3.6
Hardeman	4.9	4.6	Sumner	2.8	2.8
Hardin	4.3	4.1	Tipton	3.7	3.6
Hawkins	3.9	4.1	Trousdale	3.2	3.3
Haywood	4.8	5.0	Unicoi	5.0	4.7
Henderson	4.0	3.9	Union	3.9	4.2
Henry	4.6	4.5	Van Buren	4.4	3.9
Hickman	3.1	3.0	Warren	4.7	4.1
Houston	4.7	5.3	Washington	3.2	3.4
Humphreys	3.7	3.8	Wayne	5.1	5.1
Jackson	4.0	4.4	Weakley	3.6	3.5
Jefferson	4.4	4.7	White	3.5	3.9
Johnson	3.6	3.5	Williamson	2.3	2.5
Knox	2.9	3.0	Wilson	2.7	2.7
Lake	6.3	5.0			

(r)=revised

(p)=preliminary

\*Data Not Seasonally Adjusted



# Statewide

## Estimated Nonfarm Employment (in thousands)

Industry	Jan. 2022	Revised Dec. 2022	Preliminary Jan. 2023	Net Change	
				Dec. 2022 Jan. 2023	Jan. 2022 Jan. 2023
Total Nonfarm	3145.4	3315.3	<b>3275.2</b>	-40.1	129.8
Total Private	2714.9	2865.6	<b>2835.9</b>	-29.7	121.0
Goods Producing	497.5	523.9	<b>521.2</b>	-2.7	23.7
Mining, Logging & Construction	142.1	156.2	<b>155.1</b>	-1.1	13.0
Mining & Logging	4.3	4.5	<b>4.5</b>	0.0	0.2
Construction	137.8	151.7	<b>150.6</b>	-1.1	12.8
Construction of Buildings	29.9	33.0	<b>33.0</b>	0.0	3.1
Heavy and Civil Engineering	17.2	19.3	<b>18.7</b>	-0.6	1.5
Specialty Trade Contractors	90.7	99.4	<b>98.9</b>	-0.5	8.2
Manufacturing	355.4	367.7	<b>366.1</b>	-1.6	10.7
Durable Goods Manufacturing	226.5	233.5	<b>233.2</b>	-0.3	6.7
Wood Product Manufacturing	13.6	14.0	<b>14.0</b>	0.0	0.4
Nonmetallic Mineral Product Manufacturing	14.3	15.0	<b>15.0</b>	0.0	0.7
Primary Metal Manufacturing	11.0	10.9	<b>10.8</b>	-0.1	-0.2
Fabricated Metal Product Manufacturing	40.5	41.5	<b>41.3</b>	-0.2	0.8
Machinery Manufacturing	24.3	24.4	<b>24.4</b>	0.0	0.1
Computer & Electronic Product Manufacturing	6.4	6.9	<b>6.9</b>	0.0	0.5
Electrical Equipment & Appliance Manufacturing	18.5	18.7	<b>18.6</b>	-0.1	0.1
Transportation Equipment Manufacturing	71.2	75.7	<b>75.8</b>	0.1	4.6
Furniture & Related Product Manufacturing	9.7	9.3	<b>9.3</b>	0.0	-0.4
Miscellaneous Durable Goods	17.0	17.1	<b>17.1</b>	0.0	0.1
Nondurable Goods Manufacturing	128.9	134.2	<b>132.9</b>	-1.3	4.0
Food Manufacturing	37.9	40.7	<b>40.0</b>	-0.7	2.1
Beverage & Tobacco Product Manufacturing	8.4	9.4	<b>9.3</b>	-0.1	0.9
Paper Manufacturing	13.1	13.4	<b>13.5</b>	0.1	0.4
Printing & Related Support Activities	8.1	8.2	<b>8.3</b>	0.1	0.2
Chemical Manufacturing	26.3	27.1	<b>26.8</b>	-0.3	0.5
Plastics & Rubber Products Manufacturing	24.9	25.4	<b>25.3</b>	-0.1	0.4
Service Providing	2647.9	2791.4	<b>2754.0</b>	-37.4	106.1
Trade, Transportation, & Utilities	666.7	702.5	<b>689.2</b>	-13.3	22.5
Wholesale Trade	124.9	133.6	<b>133.7</b>	0.1	8.8
Merchant Wholesalers, Durable Goods	73.7	79.6	<b>78.7</b>	-0.9	5.0
Merchant Wholesalers, Nondurable Goods	43.8	46.0	<b>47.2</b>	1.2	3.4
Wholesale Trade Agents & Brokers	7.4	8.0	<b>7.8</b>	-0.2	0.4
Retail Trade	336.0	351.7	<b>342.8</b>	-8.9	6.8
Motor Vehicle & Parts Dealers	46.8	48.4	<b>48.3</b>	-0.1	1.5
Building Material, Garden Equipment, & Supplies	32.2	34.3	<b>33.0</b>	-1.3	0.8
Food & Beverage Retailers	57.3	60.8	<b>60.5</b>	-0.3	3.2
Furniture, Home Furnishings, Electronics, & Appliance	20.3	20.3	<b>19.8</b>	-0.5	-0.5
General Merchandise Retailers	76.7	77.5	<b>74.6</b>	-2.9	-2.1
Health & Personal Care Retailers	25.9	26.2	<b>25.7</b>	-0.5	-0.2
Gasoline Stations & Fuel Dealers	24.3	26.4	<b>26.3</b>	-0.1	2.0
Clothing, Clothing Accessories, Shoe & Jewelry Retail	22.7	25.5	<b>23.9</b>	-1.6	1.2
Sporting Goods, Hobby, Music, & Book Retailers	29.8	32.3	<b>30.7</b>	-1.6	0.9
Transportation, Warehousing, & Utilities	205.8	217.2	<b>212.7</b>	-4.5	6.9
Utilities	4.1	4.2	<b>4.3</b>	0.1	0.2
Transportation & Warehousing	201.7	213.0	<b>208.4</b>	-4.6	6.7
Truck Transportation	57.5	60.8	<b>59.9</b>	-0.9	2.4
Information	50.8	56.8	<b>55.8</b>	-1.0	5.0
Financial Activities	171.4	175.8	<b>174.9</b>	-0.9	3.5
Finance & Insurance	130.5	132.5	<b>133.1</b>	0.6	2.6
Real Estate, Rental, & Leasing	40.9	43.3	<b>41.8</b>	-1.5	0.9
Professional & Business Services	450.8	469.0	<b>465.8</b>	-3.2	15.0
Professional, Scientific, & Technical Services	164.6	177.2	<b>176.4</b>	-0.8	11.8
Management of Companies & Enterprises	53.4	54.4	<b>54.2</b>	-0.2	0.8
Administrative, Support, & Waste Management	232.8	237.4	<b>235.2</b>	-2.2	2.4
Educational & Health Services	440.1	461.3	<b>456.9</b>	-4.4	16.8
Private Educational Services	62.3	67.1	<b>63.0</b>	-4.1	0.7
Health Care & Social Assistance	377.8	394.2	<b>393.9</b>	-0.3	16.1
Ambulatory Health Care Services	161.9	170.3	<b>169.9</b>	-0.4	8.0
Hospitals	109.4	113.5	<b>113.6</b>	0.1	4.2
Nursing & Residential Care Facilities	55.6	57.5	<b>58.0</b>	0.5	2.4
Social Assistance	50.9	52.9	<b>52.4</b>	-0.5	1.5
Leisure & Hospitality	315.5	348.3	<b>345.3</b>	-3.0	29.8
Arts, Entertainment, & Recreation	34.8	42.2	<b>38.9</b>	-3.3	4.1
Accommodation & Food Services	280.7	306.1	<b>306.4</b>	0.3	25.7
Accommodation	33.0	38.6	<b>38.1</b>	-0.5	5.1
Food Services & Drinking Places	247.7	267.5	<b>268.3</b>	0.8	20.6
Other Services	122.1	128.0	<b>126.8</b>	-1.2	4.7
Government	430.5	449.7	<b>439.3</b>	-10.4	8.8
Federal Government	52.0	54.0	<b>53.6</b>	-0.4	1.6
State Government	90.5	96.7	<b>90.2</b>	-6.5	-0.3
State Government Educational Services	50.9	56.6	<b>50.0</b>	-6.6	-0.9
State Government Excluding Educational Services	39.6	40.1	<b>40.2</b>	0.1	0.6
Local Government	288.0	299.0	<b>295.5</b>	-3.5	7.5
Local Government Educational Services	145.7	151.7	<b>148.3</b>	-3.4	2.6
Local Government Excluding Educational Services	142.3	147.3	<b>147.2</b>	-0.1	4.9

## Nonfarm Employment Summary

### Monthly Employment Changes

Total Nonfarm	-40,100
Retail Trade	-8,900
General Merchandise Retailers	-2,900
State Government Educational Services	-6,600
Transportation & Warehousing	-4,600
Private Educational Services	-4,100
Local Government Educational Services	-3,500
Arts, Entertainment, & Recreation	-3,300
Professional & Business Services	-3,200
Admin, Support, & Waste Mgmt	-2,200
Manufacturing	-1,600
Nondurable Goods manufacturing	-1,300
Real Estate, Rental & Leasing	-1,500
Construction	-1,100
Information	-1,000

### Annual Changes

Total Nonfarm	+129,800
Leisure & Hospitality	+29,800
Accommodation & Food Services	+25,700
Trade, Transportation, & Utilities	+22,500
Education & Health Services	+16,800
Health Care & Social Assistance	+16,100
Professional & Business Services	+15,000
Construction	+12,800
Specialty Trade Contractors	+8,200
Manufacturing	+10,700

### Monthly Unemployment Rates Counties

Increased	95
Decreased	0
Unchanged	0
<b>Highest/Lowest Rate</b>	<b>Rate</b>
Williamson County	2.5%
Perry County	9.9%

The data from all the nonfarm employment estimates tables include all full- and part-time nonfarm wage and salary employees who worked during or received pay for any part of the pay period that includes the 12th of the month. This is a count of jobs by place of work. Agricultural workers, proprietors, self-employed persons, workers in private households, and unpaid family workers are excluded. These numbers may not add due to rounding. Data are based on the 2021 benchmark.

# Civilian Labor Force

## Civilian Labor Force Summary

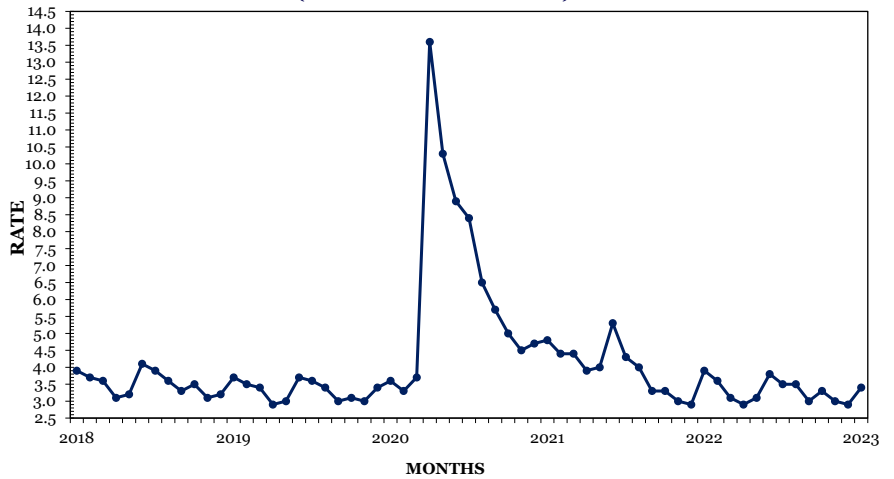
	January 2022				December 2022				January 2023			
	Labor Force	Employed	Unemployed	Rate	Labor Force	Employed	Unemployed	Rate	Labor Force	Employed	Unemployed	Rate
<b>Seasonally Adjusted</b>												
UNITED STATES	163,633,000	157,122,000	6,511,000	4.0	164,966,000	159,244,000	5,722,000	3.5	165,832,000	160,138,000	5,694,000	3.4
TENNESSEE	3,355,106	3,238,437	116,669	3.5	3,322,094	3,206,501	115,593	3.5	3,321,974	3,206,288	115,686	3.5
<b>Not Seasonally Adjusted</b>												
UNITED STATES	162,825,000	155,618,000	7,207,000	4.4	164,224,000	158,872,000	5,352,000	3.3	165,070,000	158,692,000	6,378,000	3.9
TENNESSEE	3,345,488	3,221,055	124,433	3.7	3,300,137	3,203,373	96,764	2.9	3,332,947	3,214,781	118,166	3.5
<b>Metropolitan Statistical Areas</b>												
Chattanooga	273,711	262,963	10,748	3.9	271,892	263,981	7,911	2.9	273,199	264,046	9,153	3.4
Clarksville	119,191	114,238	4,953	4.2	118,266	114,053	4,213	3.6	119,397	114,457	4,940	4.1
Cleveland	57,821	55,407	2,414	4.2	56,235	54,441	1,794	3.2	56,738	54,637	2,101	3.7
Jackson	64,956	62,612	2,344	3.6	63,113	61,286	1,827	2.9	63,797	61,506	2,291	3.6
Johnson City	92,421	89,210	3,211	3.5	91,141	88,304	2,837	3.1	91,520	88,189	3,331	3.6
Kingsport-Bristol	133,788	129,103	4,685	3.5	134,578	130,395	4,183	3.1	135,777	130,772	5,005	3.7
Knoxville	439,742	425,725	14,017	3.2	433,540	421,757	11,783	2.7	437,294	423,039	14,255	3.3
Memphis	636,024	605,177	30,847	4.8	620,194	598,404	21,790	3.5	624,405	598,350	26,055	4.2
Morristown	53,002	50,736	2,266	4.3	52,436	50,817	1,619	3.1	53,341	51,035	2,306	4.3
Nashville-Murfreesboro	1,116,112	1,083,357	32,755	2.9	1,115,102	1,088,835	26,267	2.4	1,124,564	1,093,701	30,863	2.7
<b>Micropolitan Statistical Areas</b>												
Athens	22,048	21,153	895	4.1	20,726	19,924	802	3.9	21,144	20,190	954	4.5
Brownsville	7,645	7,281	364	4.8	7,356	7,048	308	4.2	7,521	7,148	373	5.0
Cookeville	50,008	48,243	1,765	3.5	49,316	47,752	1,564	3.2	49,690	47,768	1,922	3.9
Crossville	22,875	21,717	1,158	5.1	23,094	22,082	1,012	4.4	23,338	22,115	1,223	5.2
Dayton	13,957	13,376	581	4.2	13,549	12,967	582	4.3	13,709	13,014	695	5.1
Dyersburg	16,408	15,766	642	3.9	16,290	15,771	519	3.2	16,333	15,706	627	3.8
Greeneville	28,995	27,712	1,283	4.4	28,166	26,971	1,195	4.2	28,605	27,165	1,440	5.0
Lawrenceburg	19,182	18,502	680	3.5	18,867	18,299	568	3.0	19,130	18,420	710	3.7
Lewisburg	15,523	15,003	520	3.3	15,479	15,051	428	2.8	15,630	15,125	505	3.2
Martin	15,281	14,725	556	3.6	14,964	14,537	427	2.9	15,147	14,623	524	3.5
McMinnville	16,315	15,547	768	4.7	16,122	15,563	559	3.5	16,330	15,658	672	4.1
Newport	14,679	13,586	1,093	7.4	14,207	13,639	568	4.0	14,630	13,607	1,023	7.0
Paris	13,398	12,788	610	4.6	13,296	12,824	472	3.5	13,440	12,836	604	4.5
Sevierville	54,313	51,445	2,868	5.3	53,409	52,054	1,355	2.5	53,959	50,879	3,080	5.7
Shelbyville	21,271	20,554	717	3.4	21,033	20,380	653	3.1	21,367	20,645	722	3.4
Tullahoma-Manchester	47,818	46,180	1,638	3.4	46,805	45,410	1,395	3.0	47,193	45,601	1,592	3.4
Union City	14,649	14,015	634	4.3	14,562	14,065	497	3.4	14,807	14,163	644	4.3
<b>Cities</b>												
Bartlett	31,177	30,080	1,097	3.5	30,304	29,505	799	2.6	30,447	29,565	882	2.9
Brentwood	22,550	22,025	525	2.3	22,637	22,153	484	2.1	22,835	22,256	579	2.5
Bristol	11,464	11,038	426	3.7	11,351	10,997	354	3.1	11,457	11,053	404	3.5
Chattanooga	87,305	83,098	4,207	4.8	85,449	82,840	2,609	3.1	86,139	83,024	3,115	3.6
Clarksville	64,116	61,463	2,653	4.1	63,286	61,076	2,210	3.5	64,037	61,419	2,618	4.1
Cleveland	20,842	19,892	950	4.6	20,184	19,544	640	3.2	20,364	19,609	755	3.7
Collierville	26,415	25,543	872	3.3	25,652	25,054	598	2.3	25,785	25,105	680	2.6
Columbia	20,323	19,556	767	3.8	20,216	19,652	564	2.8	20,417	19,750	667	3.3
Cookeville	14,434	13,905	529	3.7	14,305	13,823	482	3.4	14,382	13,797	585	4.1
Franklin	50,195	48,995	1,200	2.4	50,348	49,279	1,069	2.1	50,769	49,510	1,259	2.5
Gallatin	23,715	23,022	693	2.9	23,798	23,145	653	2.7	23,967	23,242	725	3.0
Germantown	19,956	19,254	702	3.5	19,369	18,886	483	2.5	19,448	18,924	524	2.7
Hendersonville	34,308	33,353	955	2.8	34,337	33,532	805	2.3	34,622	33,672	950	2.7
Jackson	32,651	31,317	1,334	4.1	31,630	30,645	985	3.1	31,914	30,692	1,222	3.8
Johnson City	31,877	30,931	946	3.0	31,533	30,605	928	2.9	31,639	30,543	1,096	3.5
Kingsport	22,395	21,524	871	3.9	22,181	21,444	737	3.3	22,394	21,555	839	3.7
Knoxville	99,106	95,921	3,185	3.2	97,636	95,006	2,630	2.7	98,624	95,222	3,402	3.4
LaVergne	19,773	19,225	548	2.8	19,791	19,310	481	2.4	19,934	19,384	550	2.8
Lebanon	18,531	17,982	549	3.0	18,565	18,067	498	2.7	18,771	18,161	610	3.2
Maryville	14,418	13,958	460	3.2	14,193	13,832	361	2.5	14,335	13,881	454	3.2
Memphis	293,954	276,807	17,147	5.8	283,438	271,517	11,921	4.2	286,946	272,065	14,881	5.2
Morristown	11,753	11,261	492	4.2	11,664	11,278	386	3.3	11,829	11,326	503	4.3
Mount Juliet	21,501	20,948	553	2.6	21,513	21,048	465	2.2	21,704	21,157	547	2.5
Murfreesboro	88,045	85,335	2,710	3.1	87,774	85,711	2,063	2.4	88,612	86,040	2,572	2.9
Nashville	410,266	397,236	13,030	3.2	408,875	399,221	9,654	2.4	411,879	400,642	11,237	2.7
Oak Ridge	14,372	13,917	455	3.2	14,174	13,786	388	2.7	14,280	13,816	464	3.2
Smyrna	30,285	29,455	830	2.7	30,278	29,585	693	2.3	30,486	29,698	788	2.6
Spring Hill	26,056	25,344	712	2.7	26,071	25,484	587	2.3	26,281	25,606	675	2.6

# Chattanooga MSA

## Monthly Employment Changes

Total Nonfarm	-3,500
Leisure & Hospitality	-1,200
Trade, Transportation & Utilities	-1,000
Retail Trade	-700
Education & Health Services	-500
State Government	-400
Durable Goods Manufacturing	-300
Professional & Business Services	+200
<b>Annual Employment Changes</b>	
Total Nonfarm	+12,100
Goods-Producing	+4,300
Service-Providing	+7,800

## CHATTANOOGA MSA UNEMPLOYMENT RATES (NOT SEASONALLY ADJUSTED)



## Estimated Nonfarm Employment (in thousands)

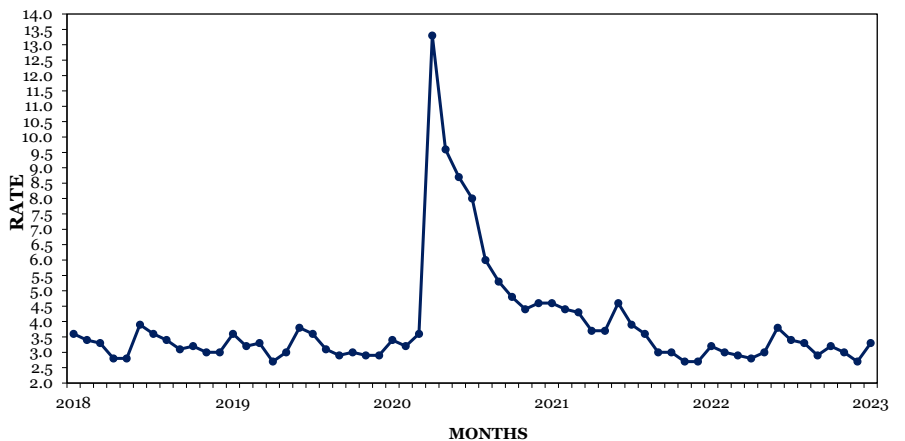
Industry	January	Revised	Preliminary	Net Change	
	2022	December 2022	January 2023	Dec. 2022 Jan. 2022	Jan. 2022 Jan. 2023
Total Nonfarm	263.2	278.8	<b>275.3</b>	-3.5	12.1
Total Private	226.9	241.2	<b>238.2</b>	-3.0	11.3
Goods-Producing	48.0	52.7	<b>52.3</b>	-0.4	4.3
Mining, Logging, & Construction	11.9	13.1	<b>13.0</b>	-0.1	1.1
Manufacturing	36.1	39.6	<b>39.3</b>	-0.3	3.2
Durable Goods Manufacturing	21.9	24.8	<b>24.5</b>	-0.3	2.6
Nondurable Goods Manufacturing	14.2	14.8	<b>14.8</b>	0.0	0.6
Service-Providing	215.2	226.1	<b>223.0</b>	-3.1	7.8
Trade, Transportation, & Utilities	53.0	55.6	<b>54.6</b>	-1.0	1.6
Wholesale Trade	8.7	9.2	<b>9.2</b>	0.0	0.5
Retail Trade	28.0	29.3	<b>28.6</b>	-0.7	0.6
Transportation, Warehousing, & Utilities	16.3	17.1	<b>16.8</b>	-0.3	0.5
Information	3.1	3.5	<b>3.4</b>	-0.1	0.3
Financial Activities	20.2	21.1	<b>21.1</b>	0.0	0.9
Professional & Business Services	29.1	30.7	<b>30.9</b>	0.2	1.8
Education & Health Services	34.5	36.8	<b>36.3</b>	-0.5	1.8
Leisure & Hospitality	27.0	28.2	<b>27.0</b>	-1.2	0.0
Other Services	12.0	12.6	<b>12.6</b>	0.0	0.6
Government	36.3	37.6	<b>37.1</b>	-0.5	0.8
Federal Government	5.7	5.9	<b>5.8</b>	-0.1	0.1
State Government	6.2	6.4	<b>6.0</b>	-0.4	-0.2
Local Government	24.4	25.3	<b>25.3</b>	0.0	0.9

# Knoxville MSA

## Monthly Employment Changes

Total Nonfarm	-5,300
Trade, Transportation & Utilities	-2,600
Retail Trade	-1,700
State Government	-1,400
Manufacturing	-400
Professional & Business Services	-300
Education & Health Services	-200
Leisure & Hospitality	-200
<b>Annual Employment Changes</b>	
Total Nonfarm	+16,200
Goods-Producing	+3,100
Service-Providing	+13,100

## KNOXVILLE MSA UNEMPLOYMENT RATES (NOT SEASONALLY ADJUSTED)



## Estimated Nonfarm Employment (in thousands)

Industry	January	Revised	Preliminary	Net Change	
	2022	December 2022	January 2023	Dec. 2022 Jan. 2022	Jan. 2022 Jan. 2023
Total Nonfarm	416.6	438.1	<b>432.8</b>	-5.3	16.2
Total Private	358.6	377.9	<b>374.1</b>	-3.8	15.5
Goods-Producing	66.0	69.4	<b>69.1</b>	-0.3	3.1
Mining, Logging, & Construction	20.1	21.3	<b>21.4</b>	0.1	1.3
Manufacturing	45.9	48.1	<b>47.7</b>	-0.4	1.8
Durable Goods Manufacturing	34.4	36.2	<b>36.0</b>	-0.2	1.6
Nondurable Goods Manufacturing	11.5	11.9	<b>11.7</b>	-0.2	0.2
Service-Providing	350.6	368.7	<b>363.7</b>	-5.0	13.1
Trade, Transportation, & Utilities	82.5	88.7	<b>86.1</b>	-2.6	3.6
Wholesale Trade	16.9	17.9	<b>17.9</b>	0.0	1.0
Retail Trade	49.3	52.1	<b>50.4</b>	-1.7	1.1
Transportation, Warehousing, & Utilities	16.3	18.7	<b>17.8</b>	-0.9	1.5
Information	6.5	6.8	<b>6.8</b>	0.0	0.3
Financial Activities	20.1	20.7	<b>20.6</b>	-0.1	0.5
Professional & Business Services	70.2	72.2	<b>71.9</b>	-0.3	1.7
Education & Health Services	55.1	57.7	<b>57.5</b>	-0.2	2.4
Leisure & Hospitality	42.1	45.8	<b>45.6</b>	-0.2	3.5
Other Services	16.1	16.6	<b>16.5</b>	-0.1	0.4
Government	58.0	60.2	<b>58.7</b>	-1.5	0.7
Federal Government	5.4	5.4	<b>5.4</b>	0.0	0.0
State Government	18.0	19.2	<b>17.8</b>	-1.4	-0.2
Local Government	34.6	35.6	<b>35.5</b>	-0.1	0.9

# Memphis MSA

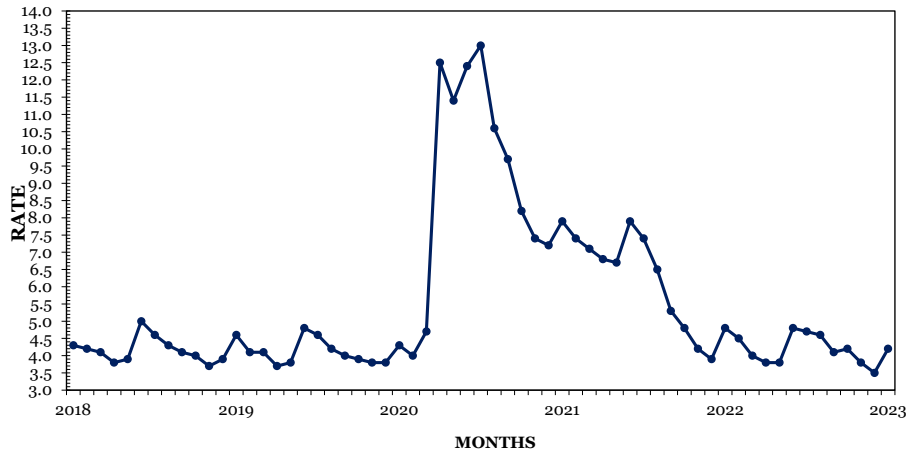
## Monthly Employment Changes

Total Nonfarm	-8,300
Trade, Transportation & Utilities	-4,700
Transportation, Warehousing, & Util.	-2,000
Retail Trade	-1,900
Wholesale Trade	-800
Professional & Business Services	-2,000
Admin, Support & Waste Mgmt.	-1,200
Education & Health Services	-800

## Annual Employment Changes

Total Nonfarm	+17,800
Goods-Producing	+2,700
Service-Providing	+15,100

## MEMPHIS MSA UNEMPLOYMENT RATES (NOT SEASONALLY ADJUSTED)



## Estimated Nonfarm Employment (in thousands)

Industry	January 2022	Revised December 2022	Preliminary January 2023	Net Change Dec. 2022 Jan. 2023	Net Change Jan. 2022 Jan. 2023
Total Nonfarm	645.8	671.9	<b>663.6</b>	-8.3	17.8
Total Private	562.6	585.0	<b>576.9</b>	-8.1	14.3
Goods-Producing	67.2	69.9	<b>69.9</b>	0.0	2.7
Mining, Logging, & Construction	23.7	25.5	<b>25.5</b>	0.0	1.8
Manufacturing	43.5	44.4	<b>44.4</b>	0.0	0.9
Durable Goods Manufacturing	25.2	25.9	<b>25.9</b>	0.0	0.7
Nondurable Goods Manufacturing	18.3	18.5	<b>18.5</b>	0.0	0.2
Service-Providing	578.6	602.0	<b>593.7</b>	-8.3	15.1
Trade, Transportation, & Utilities	185.9	191.4	<b>186.7</b>	-4.7	0.8
Wholesale Trade	36.1	37.4	<b>36.6</b>	-0.8	0.5
Retail Trade	62.7	64.8	<b>62.9</b>	-1.9	0.2
Transportation, Warehousing, & Utilities	87.1	89.2	<b>87.2</b>	-2.0	0.1
Information	5.4	5.7	<b>5.7</b>	0.0	0.3
Financial Activities	27.5	27.5	<b>27.3</b>	-0.2	-0.2
Professional & Business Services	97.6	102.4	<b>100.4</b>	-2.0	2.8
Professional, Scientific, & Technical Services	25.9	28.8	<b>28.2</b>	-0.6	2.3
Management of Companies & Enterprises	9.2	9.2	<b>9.0</b>	-0.2	-0.2
Administrative, Support, & Waste Management	62.5	64.4	<b>63.2</b>	-1.2	0.7
Education & Health Services	93.2	98.2	<b>97.4</b>	-0.8	4.2
Leisure & Hospitality	58.7	61.8	<b>61.5</b>	-0.3	2.8
Other Services	27.1	28.1	<b>28.0</b>	-0.1	0.9
Government	83.2	86.9	<b>86.7</b>	-0.2	3.5
Federal Government	14.6	15.3	<b>15.2</b>	-0.1	0.6
State Government	14.5	15.7	<b>15.8</b>	0.1	1.3
Local Government	54.1	55.9	<b>55.7</b>	-0.2	1.6



# Nashville MSA

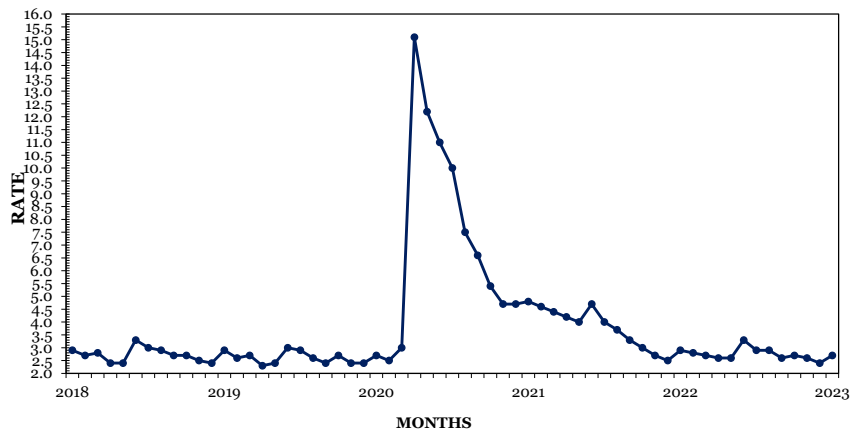
## Monthly Employment Changes

Total Nonfarm	-12,600
Retail Trade	-2,800
Local Government	-2,000
State Government	-1,500
Education & Health Services	-1,500
Mining Logging, & Construction	-1,000
Leisure & Hospitality	-1,000
Financial Activities	-800

## Annual Employment Changes

Total Nonfarm	+60,200
Goods-Producing	+7,200
Service-Providing	+53,000

## NASHVILLE MSA UNEMPLOYMENT RATES (NOT SEASONALLY ADJUSTED)



## Estimated Nonfarm Employment (in thousands)

Industry	January	Revised	Preliminary	Net Change	
	2022	December 2022	January 2023	Dec. 2022 Jan. 2023	Jan. 2022 Jan. 2023
Total Nonfarm	1,082.7	1,155.5	<b>1,142.9</b>	-12.6	60.2
Total Private	963.3	1,029.3	<b>1,020.1</b>	-9.2	56.8
Goods-Producing	138.0	146.4	<b>145.2</b>	-1.2	7.2
Mining, Logging, & Construction	54.1	59.9	<b>58.9</b>	-1.0	4.8
Manufacturing	83.9	86.5	<b>86.3</b>	-0.2	2.4
Durable Goods Manufacturing	58.5	60.2	<b>60.4</b>	0.2	1.9
Nondurable Goods Manufacturing	25.4	26.3	<b>25.9</b>	-0.4	0.5
Service-Providing	944.7	1,009.1	<b>997.7</b>	-11.4	53.0
Trade, Transportation, & Utilities	218.2	231.6	<b>228.7</b>	-2.9	10.5
Wholesale Trade	44.7	48.5	<b>49.2</b>	0.7	4.5
Retail Trade	101.8	106.5	<b>103.7</b>	-2.8	1.9
Transportation, Warehousing, & Utilities	71.7	76.6	<b>75.8</b>	-0.8	4.1
Information	28.9	32.7	<b>32.3</b>	-0.4	3.4
Financial Activities	74.1	76.9	<b>76.1</b>	-0.8	2.0
Professional & Business Services	189.1	199.5	<b>198.9</b>	-0.6	9.8
Professional, Scientific, & Technical Services	76.8	84.0	<b>83.5</b>	-0.5	6.7
Management of Companies & Enterprises	28.7	29.1	<b>28.9</b>	-0.2	0.2
Administrative, Support, & Waste Management	83.6	86.4	<b>86.5</b>	0.1	2.9
Education & Health Services	160.2	168.5	<b>167.0</b>	-1.5	6.8
Educational Services	29.1	30.8	<b>30.0</b>	-0.8	0.9
Health Care & Social Assistance	131.1	137.7	<b>137.0</b>	-0.7	5.9
Leisure & Hospitality	110.5	126.7	<b>125.7</b>	-1.0	15.2
Other Services	44.3	47.0	<b>46.2</b>	-0.8	1.9
Government	119.4	126.2	<b>122.8</b>	-3.4	3.4
Federal Government	14.8	15.2	<b>15.3</b>	0.1	0.5
State Government	28.5	29.8	<b>28.3</b>	-1.5	-0.2
Local Government	76.1	81.2	<b>79.2</b>	-2.0	3.1





# Nonfarm Employment (Smaller MSAs)

	Clarksville, TN-KY MSA		Cleveland, TN MSA		Jackson, TN MSA	
	Dec. 2022 Revised	Jan. 2023 Prelim.	Dec. 2022 Revised	Jan. 2023 Prelim.	Dec. 2022 Revised	Jan. 2023 Prelim.
Total Nonfarm	100,700	<b>99,700</b>	48,200	<b>47,600</b>	72,800	<b>72,000</b>
Total Private	81,200	<b>80,700</b>	42,700	<b>42,300</b>	58,700	<b>58,100</b>
Goods Producing	16,400	<b>16,400</b>	11,400	<b>11,400</b>	15,800	<b>15,600</b>
Mining, Logging & Construction	84,300	<b>83,300</b>	36,800	<b>36,200</b>	57,000	<b>56,400</b>
Manufacturing	4,300	<b>4,300</b>	2,400	<b>2,400</b>	3,100	<b>3,000</b>
Service Providing	12,100	<b>12,100</b>	9,000	<b>9,000</b>	12,700	<b>12,600</b>
Trade, Transportation, & Utilities	21,000	<b>20,300</b>	11,000	<b>10,900</b>	13,900	<b>13,600</b>
Wholesale Trade	N.A.	<b>N.A.</b>	900	<b>900</b>	3,100	<b>3,100</b>
Retail Trade	14,300	<b>13,700</b>	5,600	<b>5,600</b>	7,800	<b>7,600</b>
Transportation, Warehousing, & Utilities	3,400	<b>3,300</b>	4,500	<b>4,400</b>	3,000	<b>2,900</b>
Information	1,200	<b>1,200</b>	300	<b>300</b>	500	<b>500</b>
Financial Activities	3,400	<b>3,400</b>	1,400	<b>1,400</b>	2,100	<b>2,100</b>
Professional & Business Services	10,300	<b>10,000</b>	4,600	<b>4,400</b>	6,700	<b>6,600</b>
Educational & Health Services	13,300	<b>13,200</b>	6,500	<b>6,400</b>	11,400	<b>11,300</b>
Leisure & Hospitality	12,200	<b>12,800</b>	5,000	<b>5,000</b>	6,100	<b>6,200</b>
Other Services	3,400	<b>3,400</b>	2,500	<b>2,500</b>	2,200	<b>2,200</b>
Government	19,500	<b>19,000</b>	5,500	<b>5,300</b>	14,100	<b>13,900</b>
Federal Government	5,100	<b>5,000</b>	300	<b>300</b>	500	<b>500</b>
State Government	2,900	<b>2,900</b>	700	<b>500</b>	1,800	<b>1,800</b>
Local Government	11,500	<b>11,100</b>	4,500	<b>4,500</b>	11,800	<b>11,600</b>

	Johnson City, TN MSA		Kingsport-Bristol, TN-VA MSA		Morristown, TN MSA	
	Dec. 2022 Revised	Jan. 2023 Prelim.	Dec. 2022 Revised	Jan. 2023 Prelim.	Dec. 2022 Revised	Jan. 2023 Prelim.
Total Nonfarm	87,200	<b>85,400</b>	124,400	<b>123,000</b>	50,300	<b>49,600</b>
Total Private	69,800	<b>69,000</b>	108,400	<b>107,600</b>	43,500	<b>43,000</b>
Goods Producing	11,300	<b>11,300</b>	27,300	<b>27,200</b>	14,800	<b>14,800</b>
Mining, Logging & Construction	75,900	<b>74,100</b>	97,100	<b>95,800</b>	35,500	<b>34,800</b>
Manufacturing	2,800	<b>2,800</b>	6,100	<b>6,100</b>	28,700	<b>28,200</b>
Service Providing	8,500	<b>8,500</b>	21,200	<b>21,100</b>	2,300	<b>2,300</b>
Trade, Transportation, & Utilities	14,600	<b>14,100</b>	25,100	<b>24,600</b>	10,500	<b>10,200</b>
Wholesale Trade	2,500	<b>2,400</b>	3,700	<b>3,700</b>	1,500	<b>1,500</b>
Retail Trade	11,000	<b>10,700</b>	15,700	<b>15,400</b>	6,200	<b>6,000</b>
Transportation, Warehousing, & Utilities	1,100	<b>1,000</b>	5,700	<b>5,500</b>	2,800	<b>2,700</b>
Information	900	<b>900</b>	1,400	<b>1,400</b>	300	<b>300</b>
Financial Activities	5,100	<b>5,100</b>	3,900	<b>3,900</b>	1,100	<b>1,100</b>
Professional & Business Services	10,200	<b>10,100</b>	13,800	<b>13,600</b>	5,200	<b>5,100</b>
Educational & Health Services	14,600	<b>14,400</b>	17,600	<b>17,500</b>	5,900	<b>5,800</b>
Leisure & Hospitality	10,300	<b>10,300</b>	13,700	<b>13,800</b>	4,400	<b>4,400</b>
Other Services	2,800	<b>2,800</b>	5,600	<b>5,600</b>	1,300	<b>1,300</b>
Government	17,400	<b>16,400</b>	16,000	<b>15,400</b>	6,800	<b>6,600</b>
Federal Government	3,300	<b>3,200</b>	900	<b>900</b>	300	<b>300</b>
State Government	6,200	<b>5,300</b>	2,400	<b>2,100</b>	1,300	<b>1,100</b>
Local Government	7,900	<b>7,900</b>	12,700	<b>12,400</b>	5,200	<b>5,200</b>

**Clarksville MSA** is Montgomery County, Christian County, KY, & Trigg County, KY. **Cleveland MSA** is Bradley & Polk counties. **Jackson MSA** is Chester, Crockett, & Madison counties. **Johnson City MSA** is Carter, Unicoi, & Washington counties. **Kingsport-Bristol MSA** is Hawkins County, Sullivan County, Scott County, VA, Washington County, VA, & Bristol City, VA. **Morristown MSA** is Hamblen & Jefferson counties.

## U.S. Consumer Price Index — January 2023

Group	All Urban Consumers			Urban Wage Earners & Clerical Workers		
	Index	Percent Change		Index	Percent Change	
		Monthly	Yearly		Monthly	Yearly
<b>U.S. City Average</b>						
All Items (1982-84=100)	299.170	0.8	6.4	293.565	0.9	6.3
Food and beverages	316.705	0.7	9.9	315.973	0.7	9.8
Housing	313.747	1.0	8.2	310.622	1.1	8.6
Apparel	127.875	2.6	3.1	127.164	2.1	2.5
Transportation	257.874	0.7	3.8	261.059	1.0	3.0
Medical care	551.422	0.1	3.1	560.797	0.2	3.2
<b>South</b>						
All Items (1982-84=100)	290.438	0.8	6.9	285.907	0.9	6.6
Food and beverages	311.404	0.6	10.0	310.375	0.5	9.9
Housing	292.411	0.8	9.6	293.520	0.8	10.0
Apparel	135.810	1.2	2.0	134.865	0.5	1.5
Transportation	259.775	1.3	3.9	258.553	1.8	2.9
Medical care	521.622	0.0	2.8	537.513	0.4	3.2

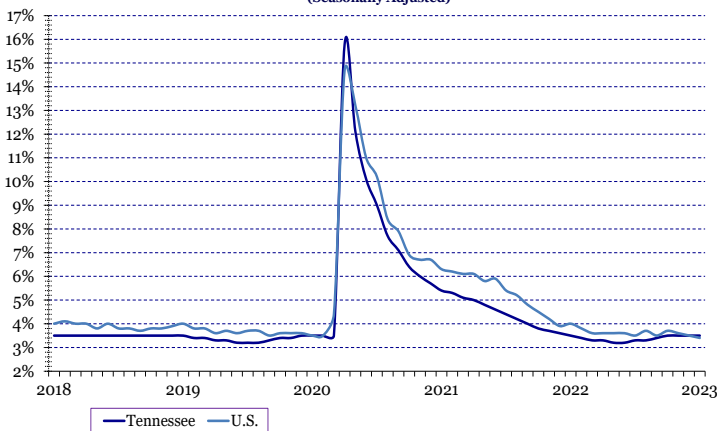
## Hours And Earnings Of Production Workers

	Average Weekly Earnings			Average Hourly Earnings			Average Weekly Hours		
	Jan.	Dec.	Jan.	Jan.	Dec.	Jan.	Jan.	Dec.	Jan.
	2022	2022	2023	2022	2022	2023	2022	2022	2023
Manufacturing	\$957.18	\$960.37	<b>\$901.60</b>	\$22.79	\$23.31	<b>\$23.00</b>	42.0	41.2	<b>39.2</b>
Durable Goods Manufacturing	\$985.01	\$1,029.26	<b>\$947.64</b>	\$23.85	\$24.39	<b>\$23.81</b>	41.3	42.2	<b>39.8</b>
Non-Durable Goods Manufacturing	\$912.76	\$849.82	<b>\$826.27</b>	\$21.08	\$21.46	<b>\$21.63</b>	43.3	39.6	<b>38.2</b>

## All Employee Hours And Earnings

	Average Weekly Earnings			Average Hourly Earnings			Average Weekly Hours		
	Jan.	Dec.	Jan.	Jan.	Dec.	Jan.	Jan.	Dec.	Jan.
	2022	2022	2023	2022	2022	2023	2022	2022	2023
Total Private	\$985.60	\$1,009.13	<b>\$1,017.45</b>	\$28.00	\$28.75	<b>\$29.07</b>	35.2	35.1	<b>35.0</b>
Goods-Producing	\$1,176.59	\$1,200.89	<b>\$1,181.20</b>	\$28.98	\$29.29	<b>\$29.53</b>	40.6	41.0	<b>40.0</b>
Mining, Logging & Construction	\$1,161.10	\$1,209.71	<b>\$1,194.90</b>	\$29.62	\$30.86	<b>\$30.56</b>	39.2	39.2	<b>39.1</b>
Manufacturing	\$1,184.09	\$1,195.12	<b>\$1,172.73</b>	\$28.74	\$28.66	<b>\$29.10</b>	41.2	41.7	<b>40.3</b>
Private Service-Providing	\$940.05	\$964.16	<b>\$981.07</b>	\$27.73	\$28.61	<b>\$28.94</b>	33.9	33.7	<b>33.9</b>
Trade, Transportation, & Utilities	\$893.42	\$868.11	<b>\$881.59</b>	\$26.20	\$25.76	<b>\$26.16</b>	34.1	33.7	<b>33.7</b>
Information	\$1,212.20	\$1,315.25	<b>\$1,392.04</b>	\$31.90	\$34.98	<b>\$35.97</b>	38.0	37.6	<b>38.7</b>
Financial Activities	\$1,442.78	\$1,450.37	<b>\$1,462.48</b>	\$38.27	\$38.78	<b>\$38.69</b>	37.7	37.4	<b>37.8</b>
Professional & Business Services	\$1,164.02	\$1,286.25	<b>\$1,330.38</b>	\$31.46	\$34.30	<b>\$35.01</b>	37.0	37.5	<b>38.0</b>
Education & Health Services	\$930.65	\$928.88	<b>\$931.91</b>	\$26.59	\$27.32	<b>\$27.49</b>	35.0	34.0	<b>33.9</b>
Leisure & Hospitality	\$444.93	\$496.42	<b>\$497.54</b>	\$17.38	\$19.02	<b>\$18.99</b>	25.6	26.1	<b>26.2</b>
Other Services	\$885.74	\$905.36	<b>\$904.45</b>	\$27.17	\$27.27	<b>\$26.68</b>	32.6	33.2	<b>33.9</b>

TENNESSEE & UNITED STATES  
UNEMPLOYMENT RATES  
(Seasonally Adjusted)



TENNESSEE & UNITED STATES  
LABOR FORCE PARTICIPATION RATES  
(Seasonally Adjusted)

