

The Labor Market Report

The Tennessee Department of Labor and Workforce Development

Phil Bredesen,
Governor

James G. Neeley,
Commissioner

January 2010 Data

Special Points of Interest:

- Labor Surplus Areas in Tennessee FY 2010
- 2009 Labor Market Report Directory
- Tennessee Historical Civilian Labor Force Series, 1980 to Present
- County Unemployment Rates
- Civilian Labor Force Summary
- State Unemployment Insurance Activities

Inside This Issue:

Chattanooga MSA	7
Knoxville MSA	8
Memphis MSA	9
Nashville MSA	10
Smaller MSAs	11
Consumer Price Index	12

What Is the Definition of a Labor Surplus Area?

Labor surplus areas are classified by civil jurisdictions rather than on a metropolitan area or labor market areas. Civil jurisdictions are defined as all cities with a population of at least 25,000 and all counties.

A civil jurisdiction becomes a labor surplus area when its average unemployment rate was at least 20 percent above the average unemployment rate for all states during the previous two calendar years. During periods of high national unemployment, this 20 percent is disregarded and an area is classified as a labor surplus area if its unemployment rate during the previous two calendar years was 10 percent or more. This 10 percent ceiling comes into effect whenever the two-year average unemployment rate for all states was above 8.3 percent. Similarly, a floor of 6 percent is used during periods of low national unem-

ployment in order for an area to qualify as a labor surplus area. The 6 percent floor comes into effect whenever the average unemployment rate for all states during the two-year reference period was less than 5 percent.

The Department of Labor issues the labor surplus area list each fiscal year. This list starts on October 1 and ends the following September 30. The reference period used in preparing the current list was January 2007 through December 2008. The national average unemployment rate during this period was 5.3 percent. The qualifying rate for a FY 2010 labor surplus area classification was 6.3 percent or above.

Under exceptional circumstances, there are special procedures for designation of labor surplus areas. These procedures permit the regular criteria to be waived when an area experiences a significant increase in unemployment that is not tempo-

rary or seasonal and that was not adequately reflected in the data for the two-year reference period. In exceptional circumstances situations, labor surplus areas may be designated if the state workforce agency submits a petition requesting the criteria to be waived to the U.S. Department of Labor's Employment and Training Administration (ETA).

The current conditions for exceptional circumstance classification are: an area unemployment rate of at least 6.4 percent for each of the three most recent months; projected unemployment of at least 6.4 percent for each of the next 12 months; and documented information that the exceptional circumstance event has already occurred.

The following labor surplus classifications will be in effect from October 1, 2009, through September 30, 2010.

Eligible Labor Surplus Areas in Tennessee

Benton County	Cumberland County	Hancock County
Bledsoe County	Decatur County	Hardeman County
Campbell County	Dyer County	Hardin County
Carroll County	Fayette County	Haywood County
Claiborne County	Fentress County	Henderson County
Clay County	Gallatin city (Sumner)	Henry County
Cleveland city (Bradley)	Gibson County	Hickman County
Cocke County	Giles County	Houston County
Columbia city (Maury)	Grainger County	Humphreys County
Cookeville city (Putnam)	Greene County	Jackson city (Madison)
Crockett County	Grundy County	<i>(Continued on Page 2)</i>

2009 Labor Market Report Directory

Articles of interest published in the 2009 issues of *The Labor Market Report* are listed below. You may request copies by writing to the address on the back of this report or e-mailing us at tnlmi@tn.gov. Back issues of *The Labor Market Report* are also on the Internet at <http://www.tennessee.gov/labor-wfd/lmr>.

JANUARY

- The 2008 LMR Directory. Articles published in the 2008 issues of *The Labor Market Report*.
- *What are Labor Surplus Areas Classifications?* A list of the Tennessee counties that are eligible labor surplus areas in 2009.

FEBRUARY

- *Annual Average Labor Force Employment for the Metropolitan and Micropolitan Statistical Areas (MSAs)*. This gives labor force, employment, and unemployment data for 2006 to 2008 as produced by the Local Area Unemployment Statistics (LAUS) Program.

MARCH

- *Population Estimates, Percentage Changes, and Rank for Tennessee and Counties 2006 to 2008 With Census 2000 Population Totals*.

APRIL

- *Quarterly Personal Income for All States From Q4 2007 to Q1 2009*. This shows a list of states total personal income and percent change for six quarters

MAY

- *Resident Population Totals for Cities Greater Than 100,000*. These cities are ranked by population for 2001-2002 and 2006-2008 along with Census 2000.

JUNE

- *Fun Facts About Unmarried and Single Americans Week* is an adapted article from the Census Bureau that gives statistical information about this population group.
- *Fascinating Facts About Going Back to School: 2009-2010* is adapted from an article by the Census Bureau. It lists the number of students in elementary, high school, and college. There is information about costs and benefits at each level.

JULY

- *Health Coverage for Uninsured Tennesseans Under 65 Years Old*. This county data shows total numbers and percentages of the uninsured population in 2006.

AUGUST

- *Holiday Hiring and Layoffs From 2003-2009*. This article was adapted from a larger study at the Bureau of Labor Statistics about the trends in traditional seasonal hiring and the subsequent layoffs at the end of the year.

SEPTEMBER

- *Kids Count: The State of the Child in Tennessee*. This article, from a study by the Tennessee Commission on Children and Youth, shows the county data on numbers of child neglect, pregnancies, and deaths in 2006.

OCTOBER

- *Per Capita Personal Income by States From 1975 to 2008*. This longitudinal study shows the total and percent increases during five-year intervals for this 33-year period.

NOVEMBER

- *Fun Facts About Black History Month* is adapted from an article by the Census Bureau. There is information about the history of this monthly observance as well information about African-Americans' population, education, voting percentages, and business contributions.

DECEMBER

- *An Economic Report to the Governor of the State of Tennessee: 2010*. This article is adapted from the executive summary in said publication that is produced by the Center for Business and Economic Research at the University of Tennessee.

Counties Designated As Eligible Labor Surplus Areas — Continued

Jackson County	Marshall County	Overton County	Trousdale County
Johnson County	Maryville city (Blount)	Perry County	Unicoi County
Kingsport city (Sullivan)	McMinn County	Pickett County	Van Buren County
Knoxville city (Knox)	McNairy County	Polk County	Warren County
Lake County	Meigs County	Rhea County	Wayne County
Lauderdale County	Memphis city (Shelby)	Scott County	Weakley County
Lawrence County	Monroe County	Sequatchie County	White County
Lewis County	Morgan County	Smith County	
Macon County	Morristown city (Hamblen)	Stewart County	
Marion County	Obion County	Tipton County	

Statewide

HISTORICAL CIVILIAN LABOR FORCE

UNEMPLOYMENT RATES BY COUNTY*

(NUMBERS IN THOUSANDS)

MONTHLY DATA NOT SEASONALLY ADJUSTED

Year and Month	Civilian Labor Force							Unemployed Number	Rate (%)
	Total	Employment	Employed						
			Total	Nonfarm Employment					
			**Manu- facturing	**Trade	**Services				
1980	2,071.6	1,920.1	1,746.6	502.1	379.7	291.0	151.5	7.3 %	
1981	2,123.1	1,927.6	1,775.4	506.9	379.9	304.4	195.5	9.2	
1982	2,141.2	1,891.5	1,703.0	466.7	380.5	313.1	249.7	11.7	
1983	2,188.2	1,932.4	1,719.0	468.6	389.9	323.4	255.8	11.7	
1984	2,233.5	2,026.4	1,812.0	497.1	413.3	344.3	207.1	9.3	
1985	2,255.7	2,070.0	1,867.8	492.4	435.3	360.2	185.7	8.2	
1986	2,291.3	2,110.7	1,929.8	490.5	452.1	384.7	180.6	7.9	
1987	2,324.1	2,166.5	2,011.6	497.4	477.2	408.9	157.6	6.8	
1988	2,333.6	2,197.2	2,092.1	511.9	495.6	440.3	136.4	5.8	
1989	2,364.9	2,241.3	2,167.2	524.5	508.4	467.2	123.6	5.2	
1990	2,401.1	2,269.0	2,193.2	493.4	379.1	611.0	132.1	5.5	
1991	2,425.4	2,266.0	2,183.6	480.3	373.0	626.7	159.4	6.6	
1992	2,479.5	2,316.7	2,245.0	492.8	374.1	664.8	162.8	6.6	
1993	2,543.3	2,391.6	2,328.5	502.8	382.5	709.8	151.7	6.0	
1994	2,645.7	2,511.1	2,423.0	513.8	398.4	751.4	134.6	5.1	
1995	2,718.0	2,574.0	2,498.9	518.0	412.6	795.0	144.0	5.3	
1996	2,758.4	2,611.0	2,533.3	501.5	420.9	814.3	147.4	5.3	
1997	2,788.3	2,640.0	2,584.0	498.0	430.5	849.7	148.3	5.3	
1998	2,811.7	2,685.2	2,638.4	498.6	437.1	875.7	126.5	4.5	
1999	2,838.7	2,722.1	2,685.3	494.7	443.6	900.8	116.6	4.1	
2000	2,871.5	2,756.5	2,728.9	488.1	447.5	930.9	115.0	4.0	
2001	2,863.5	2,728.5	2,688.3	454.2	446.6	921.5	135.0	4.7	
2002	2,867.1	2,715.0	2,664.4	428.5	438.7	938.0	152.1	5.3	
2003	2,896.1	2,731.4	2,667.5	414.1	440.8	950.3	164.8	5.7	
2004	2,906.9	2,748.6	2,706.1	411.8	447.5	978.7	158.3	5.4	
2005	2,938.9	2,775.6	2,743.1	408.8	454.6	1,005.6	163.3	5.6	
2006	3,008.3	2,854.0	2,783.1	400.1	460.6	1,030.4	154.4	5.1	
2007	3,013.4	2,867.6	2,797.4	380.0	463.5	1,052.8	145.8	4.8	
2008	3,041.3	2,846.1	2,774.8	361.0	457.0	1,058.2	195.2	6.4	
2009	3,020.0	2,703.0	2,618.9	309.1	428.1	1,025.1	317.0	10.5	
December(r) 2009	2,985.4	2,669.6	2,611.8	300.0	433.4	1,027.5	315.8	10.6 %	
2010									
January (p)	2,982.4	2,639.8	2,548.3	298.7	420.1	997.3	342.7	11.5 %	
February									
March									
April									
May									
June									
July									
August									
September									
October									
November									
December									

(r)=revised

**These industries not comparable to industry employment data before 1990 because of changes to NAICS coding system.

(p)=preliminary

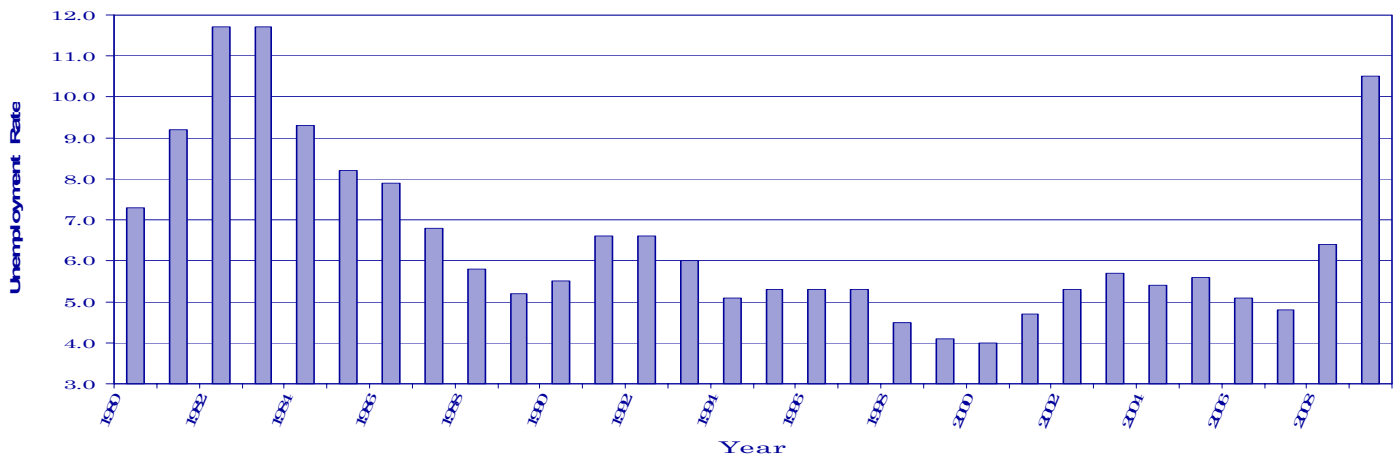
Trade = Wholesale and Retail Trade

Services = Professional/Business Services, Educational/Health Services, Leisure/Hospitality, and Other Services.

County	Jan 2009	Jan 2010	County	Jan 2009	Jan 2010
Anderson	8.8	10.5	Lauderdale	18.9	18.8
Bedford	10.3	13.6	Lawrence	16.2	17.5
Benton	14.2	14.8	Lewis	17.8	17.2
Bledsoe	14.1	15.7	Lincoln	7.2	8.3
Blount	9.5	10.7	Loudon	8.1	10.0
Bradley	8.8	10.3	Macon	12.7	12.2
Campbell	12.0	14.3	Madison	9.3	11.7
Cannon	11.4	11.0	Marion	11.4	12.6
Carroll	14.6	18.7	Marshall	16.4	20.3
Carter	9.7	11.6	Maury	16.4	17.1
Cheatham	8.3	10.2	McMinn	13.3	14.2
Chester	10.7	12.8	McNairy	13.5	14.0
Claiborne	12.3	12.8	Meigs	14.5	15.2
Clay	16.2	14.7	Monroe	15.6	16.4
Cocke	15.1	16.6	Montgomery	8.0	9.8
Coffee	9.6	11.3	Moore	8.4	11.1
Crockett	14.0	16.0	Morgan	10.7	12.9
Cumberland	12.4	13.2	Obion	9.3	10.5
Davidson	7.4	9.6	Overton	15.8	13.4
Decatur	13.0	15.0	Perry	29.7	19.7
DeKalb	11.3	11.7	Pickett	17.7	18.7
Dickson	10.8	12.1	Polk	12.1	13.1
Dyer	11.7	14.3	Putnam	9.4	10.3
Fayette	10.5	12.5	Rhea	14.4	15.1
Fentress	15.0	14.1	Roane	8.5	9.6
Franklin	10.5	11.8	Robertson	10.0	10.2
Gibson	14.1	16.3	Rutherford	8.7	10.3
Giles	14.4	16.3	Scott	18.1	18.3
Grainger	13.2	15.0	Sequatchie	10.8	13.8
Greene	15.3	16.6	Sevier	13.3	14.7
Grundy	13.7	14.7	Shelby	9.1	11.4
Hamblen	11.1	12.5	Smith	15.3	14.3
Hamilton	8.0	10.0	Stewart	12.2	14.8
Hancock	12.8	18.2	Sullivan	7.3	10.3
Hardeman	10.9	14.7	Sumner	9.3	10.3
Hardin	13.0	13.7	Tipton	11.9	13.4
Hawkins	11.1	12.2	Trousdale	12.0	12.2
Haywood	14.1	18.8	Unicoi	10.2	13.9
Henderson	17.3	19.9	Union	9.9	11.6
Henry	13.5	15.3	Van Buren	13.9	15.8
Hickman	13.0	14.1	Warren	13.9	14.1
Houston	12.0	12.8	Washington	7.8	9.8
Humphreys	13.3	13.2	Wayne	14.1	15.6
Jackson	13.5	14.5	Weakley	11.0	12.9
Jefferson	12.4	15.3	White	14.1	14.5
Johnson	13.1	16.0	Williamson	7.2	8.9
Knox	7.0	8.6	Wilson	8.2	9.6
Lake	11.3	13.0			

*Data Not Seasonally Adjusted

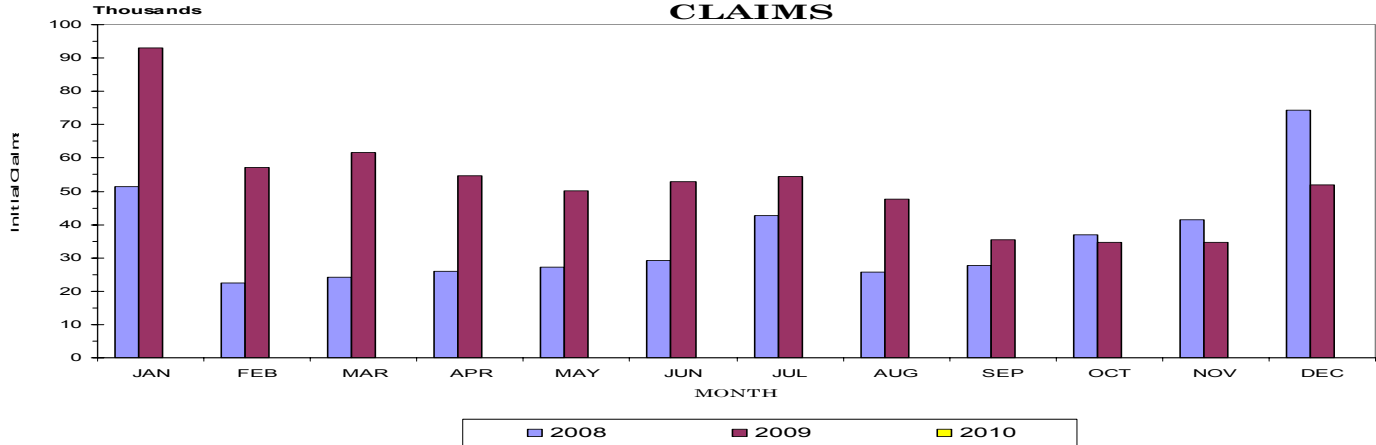
Unemployment Rates 1980-2009



Statewide

UNEMPLOYMENT INSURANCE ACTIVITIES (MOST RECENT AVAILABLE)

MONTHLY INITIAL CLAIMS



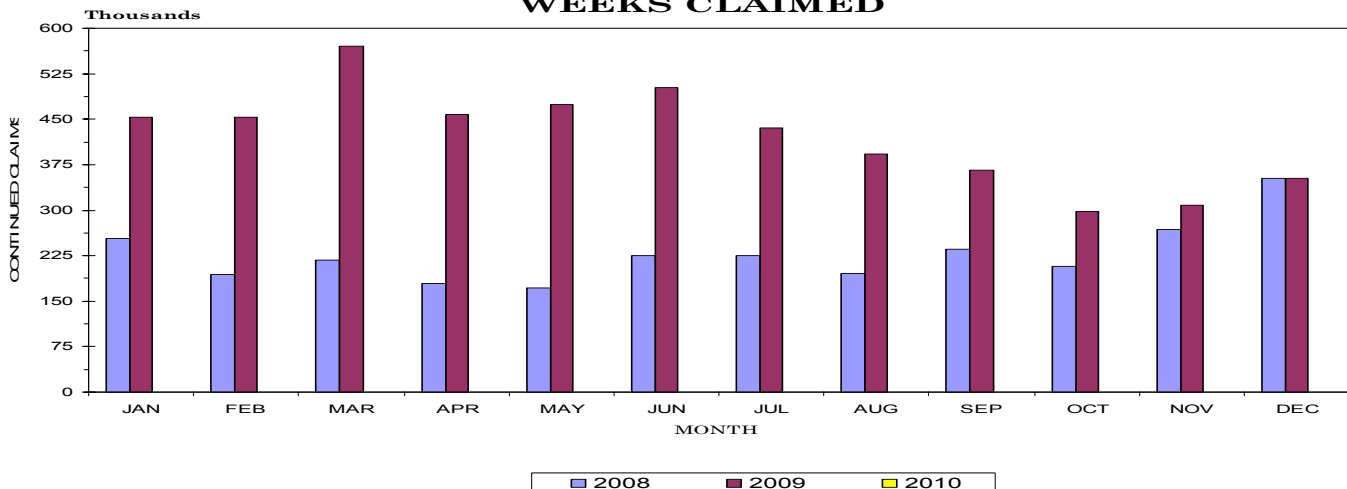
BENEFIT PROGRAMS (MOST RECENT AVAILABLE)

STATE BENEFIT PROGRAM				FEDERAL BENEFIT PROGRAMS			
CLAIMS	Dec. 2008	Nov. 2009	Dec. 2009	FORMER FEDERAL EMPLOYEES	Dec. 2008	Nov. 2009	Dec. 2009
Initial Claims	74,262	34,577	51,854	Benefits Paid	\$362,456	\$429,604	\$375,117
Continued Weeks Claimed	352,885	308,714	351,940	Benefit Weeks Claimed	1,231	1,170	1,278
Nonmonetary Determinations	5,844	7,305	7,979	Initial Claims	203	140	118
Appeals Decisions	2,075	2,403	2,631	Continued Weeks Claimed	1,286	1,288	1,393
Lower Authority	1,705	2,193	2,393	Appeals Decisions	7	9	7
Higher Authority	370	210	238				
BENEFITS				FORMER MILITARY PERSONNEL			
Amount Paid	\$70,014,454	\$68,160,287	\$68,540,652	Benefits Paid	\$533,454	\$508,191	\$503,204
Benefit Weeks Paid	348,858	287,063	323,977	Benefit Weeks Claimed	1,674	1,543	1,690
Average Weekly Benefit Amount	\$225	\$226	\$224	Initial Claims	104	172	134
First Payments	26,556	14,216	19,079	Continued Weeks Claimed	1,606	1,659	1,836
Final Payments	5,979	12,056	11,830	Appeals Decisions	5	6	4
Average Weeks Duration	13	17	17				
Trust Fund Balance*	\$425,032,964	\$204,747,272	\$144,541,237				

*Trust Fund includes balance of \$87.333 million of Reed Act funds.

CONTINUED WEEKS CLAIMED (MOST RECENT AVAILABLE)

MONTHLY CONTINUED WEEKS CLAIMED



Statewide

ESTIMATED NONFARM EMPLOYMENT (in thousands)

Industry	January 2008	Revised December 2009	Preliminary January 2009	Net Change	
				Jan. 2008 Jan. 2009	Dec. 2009 Jan. 2009
Total Nonfarm	2,647.6	2,611.8	2,548.3	-99.3	-63.5
Total Private	2,219.7	2,175.9	2,120.1	-99.6	-55.8
Goods Producing	443.7	401.7	395.8	-47.9	-5.9
Mining, Logging & Construction	113.2	101.7	97.1	-16.1	-4.6
Manufacturing	330.5	300.0	298.7	-31.8	-1.3
Durable Goods Manufacturing	197.7	172.8	171.4	-26.3	-1.4
Wood Product Manufacturing	12.2	11.0	10.7	-1.5	-0.3
Nonmetallic Mineral Product Manufacturing	12.4	10.9	10.5	-1.9	-0.4
Primary Metal Manufacturing	10.4	8.8	8.8	-1.6	0.0
Fabricated Metal Product Manufacturing	36.4	33.4	33.6	-2.8	0.2
Machinery Manufacturing	28.7	25.0	24.5	-4.2	-0.5
Computer & Electronic Product Manufacturing	6.8	5.7	5.6	-1.2	-0.1
Electrical Equipment & Appliance Manufacturing	19.6	17.4	17.4	-2.2	0.0
Transportation Equipment Manufacturing	43.6	36.1	36.1	-7.5	0.0
Furniture & Related Product Manufacturing	12.1	10.1	9.9	-2.2	-0.2
Miscellaneous Manufacturing	15.5	14.4	14.3	-1.2	-0.1
Nondurable Goods Manufacturing	132.8	127.2	127.3	-5.5	0.1
Textile Mills, Products, & Apparel	13.6	12.4	12.0	-1.6	-0.4
Food Manufacturing	32.5	32.6	32.4	-0.1	-0.2
Beverage & Tobacco Product Manufacturing	5.1	5.1	5.1	0.0	0.0
Paper Manufacturing	16.8	15.6	15.5	-1.3	-0.1
Printing & Related Support Activities	14.6	12.5	12.2	-2.4	-0.3
Chemical Manufacturing	26.6	25.4	25.1	-1.5	-0.3
Plastics & Rubber Products Manufacturing	21.8	19.5	19.7	-2.1	0.2
Plastics Product Manufacturing	11.8	10.6	10.7	-1.1	0.1
Rubber Product Manufacturing	10.0	8.9	9.0	-1.0	0.1
Service Providing	2,203.9	2,210.1	2,152.5	-51.4	-57.6
Trade, Transportation, & Utilities	571.7	561.0	542.9	-28.8	-18.1
Wholesale Trade	124.9	118.7	116.9	-8.0	-1.8
Merchant Wholesalers, Durable Goods	63.5	59.4	58.8	-4.7	-0.6
Merchant Wholesalers, Nondurable Goods	44.5	42.3	41.5	-3.0	-0.8
Wholesale Electronic Markets	16.9	17.0	16.6	-0.3	-0.4
Retail Trade	310.6	314.7	303.2	-7.4	-11.5
Motor Vehicle & Parts Dealers	37.5	35.7	34.8	-2.7	-0.9
Furniture & Home Furnishings Stores	8.3	7.8	7.4	-0.9	-0.4
Building Material, Garden Equipment, & Supplies	25.3	24.7	24.4	-0.9	-0.3
Food & Beverage Stores	49.6	50.0	49.2	-0.4	-0.8
Health & Personal Care Stores	23.0	23.2	22.9	-0.1	-0.3
Gasoline Stations	21.8	21.5	21.1	-0.7	-0.4
Clothing & Clothing Accessories Stores	26.6	28.6	24.6	-2.0	-4.0
Sporting Goods, Hobby, Book, & Music Stores	11.9	12.2	11.1	-0.8	-1.1
General Merchandise Stores	71.6	74.7	70.9	-0.7	-3.8
Miscellaneous Store Retailers	15.5	16.1	15.1	-0.4	-1.0
Nonstore Retailers	9.6	9.0	8.7	-0.9	-0.3
Transportation, Warehousing, & Utilities	136.2	127.6	122.8	-13.4	-4.8
Utilities	3.6	3.6	3.6	0.0	0.0
Transportation & Warehousing	132.6	124.0	119.2	-13.4	-4.8
Truck Transportation	53.6	49.3	48.3	-5.3	-1.0
Information	49.1	46.1	46.1	-3.0	0.0
Financial Activities	141.8	139.6	138.0	-3.8	-1.6
Finance & Insurance	108.6	106.1	105.1	-3.5	-1.0
Real Estate, Rental, & Leasing	33.2	33.5	32.9	-0.3	-0.6
Professional & Business Services	297.9	295.7	285.8	-12.1	-9.9
Professional, Scientific, & Technical Services	110.8	106.9	103.9	-6.9	-3.0
Management of Companies & Enterprises	26.8	26.0	26.1	-0.7	0.1
Administrative, Support, & Waste Management	160.3	162.8	155.8	-4.5	-7.0
Educational & Health Services	361.0	374.6	367.4	6.4	-7.2
Educational Services	43.8	47.7	43.4	-0.4	-4.3
Health Care & Social Assistance	317.2	326.9	324.0	6.8	-2.9
Ambulatory Health Care Services	119.6	125.0	123.3	3.7	-1.7
Hospitals	101.4	103.6	103.2	1.8	-0.4
Nursing & Residential Care Facilities	54.9	57.1	56.5	1.6	-0.6
Social Assistance	41.3	41.2	41.0	-0.3	-0.2
Leisure & Hospitality	253.2	256.2	245.1	-8.1	-11.1
Arts, Entertainment, & Recreation	25.6	27.0	23.7	-1.9	-3.3
Accommodation & Food Services	227.6	229.2	221.4	-6.2	-7.8
Accommodation	31.5	31.7	30.4	-1.1	-1.3
Food Services & Drinking Places	196.1	197.5	191.0	-5.1	-6.5
Other Services	101.3	101.0	99.0	-2.3	-2.0
Government	427.9	435.9	428.2	0.3	-7.7
Federal Government	49.8	49.6	49.8	0.0	0.2
State Government	95.3	100.1	96.4	1.1	-3.7
State Government Educational Services	46.4	50.2	46.4	0.0	-3.8
Local Government	282.8	286.2	282.0	-0.8	-4.2
Local Government Educational Services	148.3	149.8	146.3	-2.0	-3.5
State and Local Government	378.1	386.3	378.4	0.3	-7.9

NONFARM EMPLOYMENT AND LABOR FORCE IN TENNESSEE

Total nonfarm employment decreased by 99,300 jobs from January 2009 to January 2010. During this period, there were large seasonal decreases in mining/construction (down 16,100 jobs); transportation/warehousing (down 13,400 jobs); professional/business services (down 12,100 jobs), which includes declines of 6,900 jobs in professional/scientific/technical services and 4,500 jobs in administrative/support/waste management; wholesale trade (down 8,000 jobs), which includes decreases of 4,700 jobs in durable goods wholesalers and 3,000 jobs in nondurable goods wholesalers; transportation equipment manufacturing (down 7,500 jobs); retail trade (down 7,400 jobs), which includes declines of 2,700 jobs in motor vehicle/parts dealers and 2,000 jobs in clothing/clothing accessories stores; accommodation/food services (down 6,200 jobs), which includes a drop of 5,100 jobs in food services/drinking places; machinery manufacturing (down 4,200 jobs); and finance/insurance (down 3,500 jobs). This was partially offset by increases in health care/social assistance (up 6,800 jobs), which includes increases of 3,700 jobs in ambulatory health care services, 1,800 jobs in hospitals, and 1,600 jobs in nursing/residential care facilities; and state government (up 1,100 jobs).

During January, nonfarm employment decreased by 63,500 jobs. The largest seasonal decreases were in retail trade (down 11,500 jobs), which includes a decline of 4,000 jobs in clothing/clothing accessories stores and 3,800 jobs in general merchandise stores; professional/business services (down 9,900 jobs), which includes declines of 7,000 jobs in administrative/support/waste management and 3,000 jobs in professional/scientific/technical services; accommodation/food services (down 7,800 jobs), which includes a drop of 6,500 jobs in food services/drinking places; transportation/warehousing (down 4,800 jobs); mining/construction (down 4,600 jobs); educational services (down 4,300 jobs); and local government (down 4,200 jobs), which includes a decline of 3,500 jobs in local government educational services.

Tennessee's seasonally adjusted estimated unemployment rate for January 2010 was 10.7 percent, unchanged from the December 2009 rate. This is the 33rd consecutive month that the current rate is greater than or equal to the national average.

The United States' unemployment rate was 9.7 percent in January 2010. In January 2009, the national unemployment rate was 7.7 percent, and the state's unemployment rate was 9.1 percent.

Across Tennessee, the unemployment rate increased in all 95 counties. There were eight counties with an unemployment rate less than 10 percent and one county with a rate above 20 percent. The lowest rate occurred in Lincoln County at 8.3 percent, up 0.5 percent from the previous month. The highest rate was Marshall County's 20.3 percent, up from 18.7 percent in December 2009.

The data from all the nonfarm employment estimates tables include all full- and part-time nonfarm wage and salary employees who worked during or received pay for any part of the pay period that includes the 12th of the month. This is a count of jobs by place of work. Agricultural workers, proprietors, self-employed persons, workers in private households, and unpaid family workers are excluded. These numbers may not add due to rounding. Data is based on the 2009 benchmark.

CIVILIAN LABOR FORCE

CIVILIAN LABOR FORCE SUMMARY

	January 2009				December 2009				January 2010			
	Labor Force	Employment	Unemployed	Rate	Labor Force	Employment	Unemployed	Rate	Labor Force	Employment	Unemployed	Rate
Seasonally Adjusted												
U.S.	154,140,000	142,221,000	11,919,000	7.7	153,059,000	137,792,000	15,267,000	10.0	153,170,000	138,333,000	14,837,000	9.7
TENNESSEE	3,048,600	2,772,400	276,200	9.1	2,991,800	2,671,800	320,000	10.7	2,997,400	2,675,200	322,200	10.7
Not Seasonally Adjusted												
U.S.	153,445,000	140,436,000	13,009,000	8.5	152,693,000	137,953,000	14,740,000	9.7	152,957,000	136,809,000	16,147,000	10.6
TENNESSEE	3,019,000	2,724,500	294,500	9.8	2,985,400	2,669,600	315,800	10.6	2,982,400	2,639,800	342,700	11.5
Metropolitan Statistical Areas												
Chattanooga	258,890	236,980	21,910	8.5	252,310	228,490	23,820	9.4	252,000	226,640	25,360	10.1
Clarksville	108,620	97,720	10,900	10.0	110,030	98,700	11,330	10.3	109,740	97,330	12,410	11.3
Cleveland	53,400	48,460	4,940	9.2	53,430	48,150	5,280	9.9	53,200	47,520	5,680	10.7
Jackson	55,460	50,200	5,260	9.5	54,950	48,850	6,100	11.1	54,830	48,330	6,500	11.9
Johnson City	98,670	90,200	8,470	8.6	98,870	89,190	9,680	9.8	97,780	87,320	10,460	10.7
Kingsport-Bristol	147,990	135,350	12,640	8.5	143,320	129,620	13,700	9.6	144,070	129,130	14,940	10.4
Knoxville	358,850	330,950	27,900	7.8	357,520	326,460	31,060	8.7	354,010	321,000	33,010	9.3
Memphis	612,090	556,320	55,760	9.1	605,050	541,920	63,140	10.4	600,510	532,840	67,670	11.3
Morristown	64,310	56,630	7,670	11.9	62,190	54,270	7,920	12.7	62,520	53,780	8,750	14.0
Nashville	794,950	728,440	66,520	8.4	790,760	716,890	73,870	9.3	784,220	705,880	78,340	10.0
Micropolitan Statistical Areas												
Brownsville	9,070	7,800	1,280	14.1	9,130	7,550	1,580	17.3	9,420	7,650	1,780	18.8
Cookeville	50,790	45,160	5,630	11.1	49,900	44,620	5,270	10.6	49,940	44,300	5,650	11.3
Crossville	22,770	19,940	2,830	12.4	22,620	19,920	2,700	11.9	22,830	19,810	3,020	13.2
Dyersburg	17,280	15,260	2,020	11.7	17,150	14,810	2,340	13.6	17,160	14,710	2,460	14.3
Greeneville	29,610	25,090	4,530	15.3	28,930	24,530	4,410	15.2	29,670	24,740	4,940	16.6
Humboldt	21,340	18,330	3,010	14.1	21,100	17,850	3,250	15.4	21,340	17,870	3,470	16.3
Lawrenceburg	16,850	14,120	2,730	16.2	16,460	13,810	2,640	16.1	16,740	13,800	2,930	17.5
Lewisburg	12,770	10,680	2,090	16.4	12,080	9,820	2,260	18.7	12,410	9,900	2,510	20.3
Martin	15,800	14,070	1,740	11.0	15,330	13,380	1,960	12.8	15,670	13,650	2,020	12.9
McMinnville	17,220	14,820	2,400	13.9	16,470	14,300	2,170	13.1	16,900	14,520	2,380	14.1
Paris	13,630	11,790	1,840	13.5	13,200	11,400	1,800	13.7	13,570	11,500	2,070	15.3
Shelbyville	22,370	20,050	2,310	10.3	21,340	18,650	2,690	12.6	21,860	18,880	2,980	13.6
Tullahoma	47,570	42,860	4,710	9.9	47,260	42,220	5,050	10.7	47,300	41,870	5,430	11.5
Union City	18,000	16,290	1,710	9.5	17,520	15,710	1,810	10.3	17,830	15,890	1,950	10.9

HOURS AND EARNINGS OF PRODUCTION WORKERS

	AVERAGE WEEKLY EARNINGS			AVERAGE HOURLY EARNINGS			AVERAGE WEEKLY HOURS		
	Jan.	Dec.	Jan.	Jan.	Dec.	Jan.	Jan.	Dec.	Jan.
	2008	2009	2009	2008	2009	2009	2008	2009	2009
Manufacturing	\$585.46	\$595.23	\$599.54	\$14.71	\$14.77	\$14.84	39.8	40.3	40.4
Durable Goods Manufacturing	\$600.73	\$575.06	\$585.68	\$14.76	\$14.67	\$14.79	40.7	39.2	39.6
Nondurable Goods Manufacturing	\$561.79	\$621.98	\$616.86	\$14.63	\$14.88	\$14.90	38.4	41.8	41.4

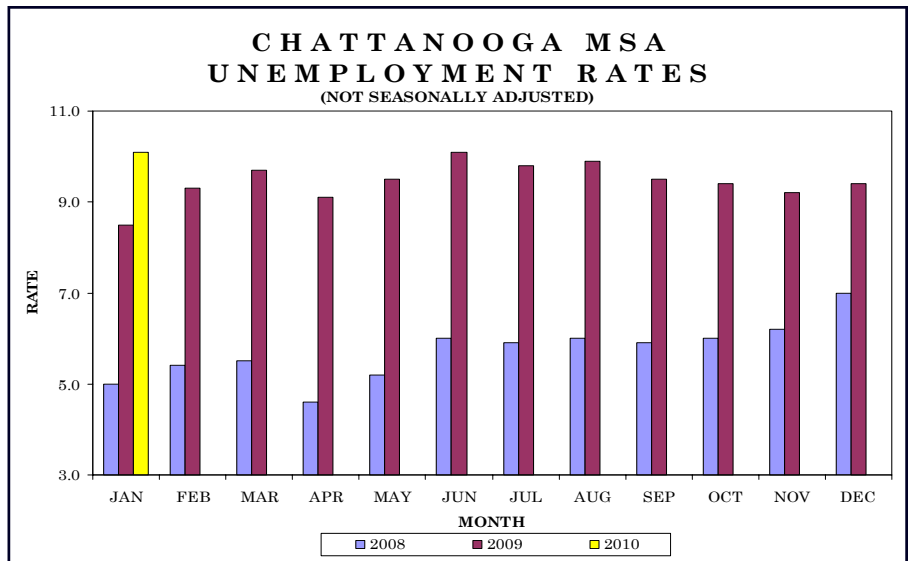
**ALL EMPLOYEE HOURS AND EARNINGS

	AVERAGE WEEKLY EARNINGS			AVERAGE HOURLY EARNINGS			AVERAGE WEEKLY HOURS		
	Dec.	Nov.	Dec.	Dec.	Nov.	Dec.	Dec.	Nov.	Dec.
	2008	2009	2009	2008	2009	2009	2008	2009	2009
Total Private	\$686.00	\$701.32	\$690.30	\$19.60	\$19.59	\$19.50	35.0	35.8	35.4
Goods Producing	\$778.33	\$871.25	\$855.51	\$20.06	\$21.25	\$21.02	38.8	41.0	40.7
Mining, Logging and Construction	\$701.06	\$738.58	\$741.47	\$19.42	\$20.07	\$20.37	36.1	36.8	36.4
Manufacturing	\$806.75	\$918.43	\$895.06	\$20.27	\$21.61	\$21.21	39.8	42.5	42.2
Private Service Providing	\$661.64	\$659.99	\$650.97	\$19.46	\$19.13	\$19.09	34.0	34.5	34.1
Trade, Transportation, and Utilities	\$690.83	\$648.00	\$646.56	\$19.46	\$18.05	\$17.96	35.5	35.9	36.0
Information	\$789.25	\$872.22	\$852.91	\$22.17	\$23.51	\$23.24	35.6	37.1	36.7
Financial Activities	\$783.18	\$801.48	\$782.81	\$21.11	\$21.43	\$21.33	37.1	37.4	36.7
Professional and Business Services	\$813.98	\$838.13	\$825.33	\$22.24	\$22.35	\$22.55	36.6	37.5	36.6
Education and Health Services	\$698.39	\$727.64	\$709.80	\$20.91	\$21.03	\$21.00	33.4	34.6	33.8
Leisure and Hospitality	\$311.26	\$318.67	\$312.18	\$11.88	\$11.98	\$11.87	26.2	26.6	26.3
Other Services	\$573.76	\$549.76	\$544.83	\$16.44	\$16.46	\$16.51	34.9	33.4	33.0

**This data is one month behind

Total nonfarm employment decreased by 3,800 jobs from December 2009 to January 2010. There were seasonal declines in retail trade and state government (both down 700 jobs); transportation/warehousing/utilities and leisure/hospitality (both down 600 jobs); professional/business services (down 500 jobs); and other services (down 300 jobs).

During the past 12 months, nonfarm jobs decreased by 10,300. During that time, goods-producing jobs dropped by 3,400 jobs and service-providing jobs declined by 6,900.



CIVILIAN LABOR FORCE SUMMARY

	January 2009				December 2009				January 2010			
	Labor Force	Employment	Unemployed	Rate	Labor Force	Employment	Unemployed	Rate	Labor Force	Employment	Unemployed	Rate
Athens Micro	23,510	20,380	3,130	13.3	23,030	19,980	3,050	13.3	23,220	19,930	3,290	14.2
Chattanooga City	79,110	72,390	6,720	8.5	77,640	70,000	7,640	9.8	77,780	69,400	8,380	10.8

ESTIMATED NONFARM EMPLOYMENT (in thousands)

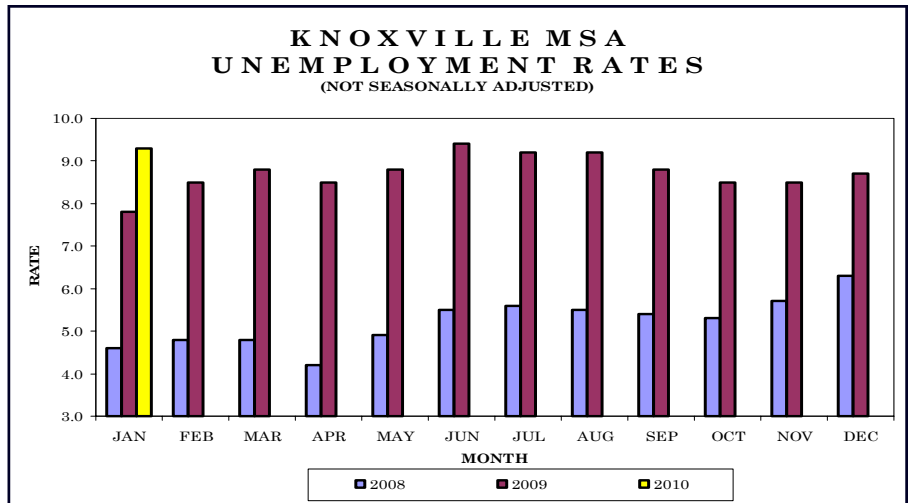
Industry	January 2009	Revised December 2009	Preliminary January 2010	Net Change	
				Jan. 2009 Jan. 2010	Dec. 2009 Jan. 2010
Total Nonfarm	232.7	226.2	222.4	-10.3	-3.8
Total Private	198.0	190.7	187.5	-10.5	-3.2
Goods Producing	39.4	36.1	36.0	-3.4	-0.1
Mining, Logging & Construction	9.1	8.6	8.6	-0.5	0.0
Manufacturing	30.3	27.5	27.4	-2.9	-0.1
Durable Goods Manufacturing	13.8	12.1	12.0	-1.8	-0.1
Nondurable Goods Manufacturing	16.5	15.4	15.4	-1.1	0.0
Service Providing	193.3	190.0	186.4	-6.9	-3.6
Trade, Transportation, & Utilities	50.5	47.6	46.2	-4.3	-1.4
Wholesale Trade	8.6	8.0	7.9	-0.7	-0.1
Retail Trade	25.1	24.8	24.1	-1.0	-0.7
Transportation, Warehousing, & Utilities	16.8	14.8	14.2	-2.6	-0.6
Information	3.9	3.6	3.6	-0.3	0.0
Financial Activities	18.2	17.8	17.7	-0.5	-0.1
Professional & Business Services	22.6	21.6	21.1	-1.5	-0.5
Educational & Health Services	30.8	31.0	30.9	0.1	-0.1
Leisure & Hospitality	21.9	22.4	21.8	-0.1	-0.6
Other Services	10.7	10.5	10.2	-0.5	-0.3
Government	34.7	35.5	34.9	0.2	-0.6
Federal Government	5.9	5.8	5.8	-0.1	0.0
State Government	5.8	6.4	5.7	-0.1	-0.7
Local Government	23.0	23.3	23.4	0.4	0.1
State and Local Government	28.8	29.7	29.1	0.3	-0.6



Knoxville MSA - Anderson, Blount, Knox, Loudon, Union

Total nonfarm employment decreased by 7,700 jobs from December 2009 to January 2010. There were seasonal declines in retail trade (down 1,900 jobs), professional/business services (down 1,300 jobs), leisure/hospitality (down 1,000 jobs), educational/health services (down 800 jobs), mining/logging/construction (down 700 jobs), local government (down 500 jobs), transportation/warehousing/utilities (down 400 jobs), state government (down 300 jobs), and financial activities and other services (both down 200 jobs).

During the past 12 months, nonfarm employment decreased by 10,500 jobs. During that time, goods-producing jobs decreased by 5,100, while service-providing jobs declined by 5,400.



CIVILIAN LABOR FORCE SUMMARY

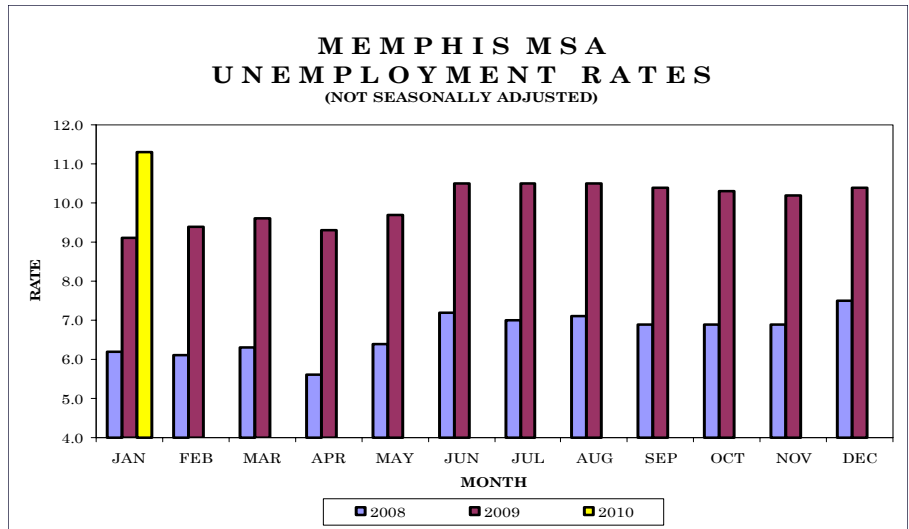
	January 2009				December 2009				January 2010			
	Labor Force	Employment	Unemployed	Rate	Labor Force	Employment	Unemployed	Rate	Labor Force	Employment	Unemployed	Rate
Harriman Micro	26,940	24,650	2,290	8.5	27,390	24,910	2,480	9.0	27,350	24,730	2,620	9.6
LaFollette Micro	16,770	14,760	2,020	12.0	16,690	14,460	2,230	13.4	16,710	14,320	2,390	14.3
Newport Micro	16,410	13,930	2,480	15.1	15,960	13,710	2,250	14.1	16,340	13,640	2,710	16.6
Sevierville Micro	47,270	40,980	6,290	13.3	46,930	41,970	4,960	10.6	47,620	40,610	7,000	14.7
Knoxville City	92,940	85,360	7,580	8.2	92,870	84,200	8,670	9.3	91,970	82,790	9,180	10.0
Maryville City	13,060	11,880	1,180	9.0	12,950	11,720	1,230	9.5	12,860	11,520	1,340	10.4
Oak Ridge City	13,230	12,280	950	7.2	13,300	12,150	1,150	8.7	13,160	11,960	1,200	9.1

ESTIMATED NONFARM EMPLOYMENT (in thousands)

Industry	January	Revised	Preliminary	Net Change	
	2009	December 2009	January 2010	Jan. 2009	Dec. 2009
	2009	2009	2010	Jan. 2010	Jan. 2010
Total Nonfarm	324.9	322.1	314.4	-10.5	-7.7
Total Private	274.2	271.1	264.2	-10.0	-6.9
Goods Producing	48.6	44.3	43.5	-5.1	-0.8
Mining, Logging & Construction	16.2	15.4	14.7	-1.5	-0.7
Manufacturing	32.4	28.9	28.8	-3.6	-0.1
Durable Goods Manufacturing	24.3	21.5	21.4	-2.9	-0.1
Nondurable Goods Manufacturing	8.1	7.4	7.4	-0.7	0.0
Service Providing	276.3	277.7	270.9	-5.4	-6.8
Trade, Transportation, & Utilities	69.3	68.7	66.3	-3.0	-2.4
Wholesale Trade	16.8	15.7	15.6	-1.2	-0.1
Retail Trade	42.1	43.3	41.4	-0.7	-1.9
Transportation, Warehousing, & Utilities	10.4	9.7	9.3	-1.1	-0.4
Information	5.6	5.4	5.3	-0.3	-0.1
Financial Activities	17.5	17.2	17.0	-0.5	-0.2
Professional & Business Services	42.6	42.8	41.5	-1.1	-1.3
Educational & Health Services	43.3	44.8	44.0	0.7	-0.8
Leisure & Hospitality	32.9	33.5	32.5	-0.4	-1.0
Other Services	14.4	14.3	14.1	-0.3	-0.2
Government	50.7	51.0	50.2	-0.5	-0.8
Federal Government	5.1	5.1	5.1	0.0	0.0
State Government	16.4	16.3	16.0	-0.4	-0.3
Local Government	29.2	29.6	29.1	-0.1	-0.5
State and Local Government	45.6	45.9	45.1	-0.5	-0.8

Total nonfarm employment decreased by 14,000 jobs from December 2009 to January 2010. There were seasonal decreases in retail trade (down 3,000 jobs); professional/business services (down 2,900 jobs), which includes a drop of 2,600 jobs in administrative/support/waste management; leisure/hospitality (down 2,500 jobs); transportation/warehousing/utilities (down 1,400 jobs); and mining/logging/construction and educational/health services (both down 900 jobs); wholesale trade (down 800 jobs); local government (down 600 jobs); state government (down 400 jobs); and durable goods manufacturing and financial activities (both down 200 jobs).

During the past 12 months, nonfarm employment decreased by 26,500 jobs. During that time, goods-producing jobs decreased by 6,500, while service-providing jobs declined by 20,000.



CIVILIAN LABOR FORCE SUMMARY

	January 2009				December 2009				January 2010			
	Labor Force	Employment	Unemployed	Rate	Labor Force	Employment	Unemployed	Rate	Labor Force	Employment	Unemployed	Rate
Bartlett City	25,820	23,960	1,860	7.2	25,430	23,300	2,130	8.4	25,230	22,950	2,290	9.1
Collierville City	19,920	18,680	1,240	6.2	19,640	18,160	1,480	7.5	19,470	17,890	1,580	8.1
Germantown City	19,220	18,140	1,080	5.6	19,040	17,640	1,400	7.3	18,830	17,370	1,460	7.7
Memphis City	307,590	276,860	30,730	10.0	303,720	269,190	34,530	11.4	302,330	265,170	37,160	12.3

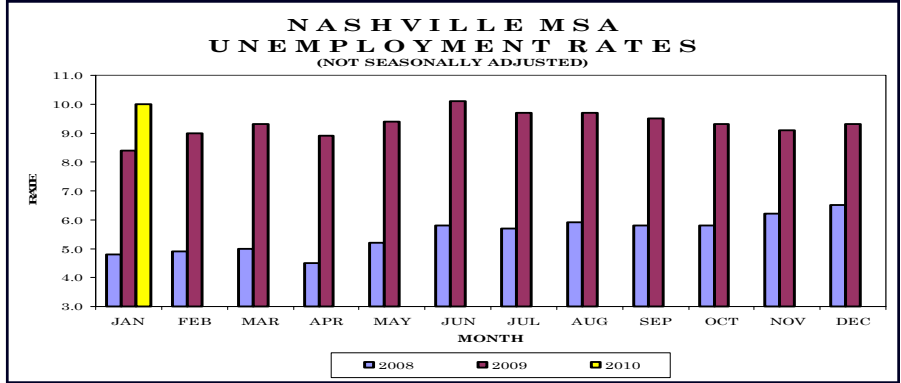
ESTIMATED NONFARM EMPLOYMENT (in thousands)

Industry	Revised		Preliminary	Net Change	
	January 2009	December 2009	January 2010	Jan. 2009 - Jan. 2010	Dec. 2009 - Jan. 2010
Total Nonfarm	607.9	595.4	581.4	-26.5	-14.0
Total Private	519.7	507.7	494.7	-25.0	-13.0
Goods Producing	70.6	65.2	64.1	-6.5	-1.1
Mining, Logging & Construction	21.7	21.0	20.1	-1.6	-0.9
Manufacturing	48.9	44.2	44.0	-4.9	-0.2
Durable Goods Manufacturing	24.4	21.1	20.9	-3.5	-0.2
Nondurable Goods Manufacturing	24.5	23.1	23.1	-1.4	0.0
Service Providing	537.3	530.1	517.3	-20.0	-12.8
Trade, Transportation, & Utilities	164.4	160.2	155.0	-9.4	-5.2
Wholesale Trade	33.6	32.1	31.3	-2.3	-0.8
Retail Trade	66.8	66.4	63.4	-3.4	-3.0
Transportation, Warehousing, & Utilities	64.0	61.7	60.3	-3.7	-1.4
Information	7.2	6.8	6.8	-0.4	0.0
Financial Activities	31.2	30.2	30.0	-1.2	-0.2
Professional & Business Services	77.9	75.1	72.2	-5.7	-2.9
Professional, Scientific, & Technical Services	19.5	18.7	18.3	-1.2	-0.4
Management of Companies & Enterprises	5.5	5.5	5.6	0.1	0.1
Administrative, Support, & Waste Management	52.9	50.9	48.3	-4.6	-2.6
Educational & Health Services	78.5	81.1	80.2	1.7	-0.9
Leisure & Hospitality	65.1	64.9	62.4	-2.7	-2.5
Other Services	24.8	24.1	24.0	-0.8	-0.1
Government	88.2	87.7	86.7	-1.5	-1.0
Federal Government	15.0	14.9	14.9	-0.1	0.0
State Government	14.3	14.4	14.0	-0.3	-0.4
Local Government	58.9	58.4	57.8	-1.1	-0.6
State and Local Government	73.2	72.8	71.8	-1.4	-1.0



Nashville MSA — Cannon, Cheatham, Davidson, Dickson, Hickman, Macon, Robertson, Rutherford, Smith, Sumner, Trousdale, Williamson, Wilson

Total nonfarm employment decreased by 17,500 jobs from December 2009 to January 2010. There were seasonal decreases in retail trade (down 4,600 jobs); professional/business services (down 2,600 jobs), which includes a drop of 1,700 jobs in administrative/support/waste management; leisure/hospitality (down 2,000 jobs), educational/health services (down 1,800 jobs), which includes a decline of 1,100 jobs in health care/social assistance; local government (down 1,600 jobs); transportation/warehousing/utilities (down 1,100 jobs); mining/logging/construction and state government (both down 900 jobs); durable goods manufacturing (down 600 jobs); financial activities (down 500 jobs); other services (down 300 jobs); and nondurable goods manufacturing and wholesale trade (both down 200 jobs).



CIVILIAN LABOR FORCE SUMMARY

	January 2009				December 2009				January 2010			
	Labor Force	Employment	Unemployed	Rate	Labor Force	Employment	Unemployed	Rate	Labor Force	Employment	Unemployed	Rate
Columbia Micro	37,090	31,020	6,080	16.4	34,940	29,620	5,320	15.2	35,180	29,160	6,020	17.1
Brentwood City	17,090	16,090	1,010	5.9	17,130	15,830	1,300	7.6	16,920	15,590	1,330	7.8
Columbia City	15,090	12,430	2,660	17.6	14,170	11,870	2,300	16.2	14,370	11,690	2,680	18.7
Franklin City	31,050	28,770	2,280	7.3	30,950	28,320	2,630	8.5	30,600	27,880	2,720	8.9
Gallatin City	13,620	12,040	1,580	11.6	13,360	11,850	1,510	11.3	13,310	11,670	1,640	12.3
Hendersonville	25,320	23,380	1,940	7.7	25,160	23,010	2,150	8.5	24,860	22,650	2,210	8.9
LaVergne City	17,060	15,470	1,590	9.3	17,090	15,230	1,860	10.9	16,890	14,990	1,900	11.2
Murfreesboro City	53,570	48,910	4,660	8.7	53,400	48,140	5,260	9.9	53,060	47,400	5,670	10.7
Nashville City	318,280	294,700	23,580	7.4	319,340	290,030	29,310	9.2	315,850	285,580	30,270	9.6
Smyrna City	20,690	18,760	1,930	9.3	20,460	18,460	2,000	9.8	20,310	18,180	2,130	10.5
Spring Hill City	13,370	11,970	1,400	10.5	13,040	11,660	1,380	10.6	13,000	11,480	1,520	11.7

ESTIMATED NONFARM EMPLOYMENT (in thousands)

Industry	January 2009	Revised	Preliminary	Net Change	
		December 2009	January 2010	Jan. 2009	Dec. 2009
		2009	2009	Jan. 2010	Jan. 2010
Total Nonfarm	731.4	724.7	707.2	-24.2	-17.5
Total Private	626.6	616.6	601.5	-25.1	-15.1
Goods Producing	99.3	89.3	87.6	-11.7	-1.7
Mining, Logging & Construction	33.5	29.1	28.2	-5.3	-0.9
Manufacturing	65.8	60.2	59.4	-6.4	-0.8
Durable Goods Manufacturing	42.5	38.2	37.6	-4.9	-0.6
Nondurable Goods Manufacturing	23.3	22.0	21.8	-1.5	-0.2
Service Providing	632.1	635.2	619.6	-12.5	-15.6
Trade, Transportation, & Utilities	150.5	148.9	143.0	-7.5	-5.9
Wholesale Trade	37.2	35.6	35.4	-1.8	-0.2
Retail Trade	83.9	86.2	81.6	-2.3	-4.6
Transportation, Warehousing, & Utilities	29.4	27.1	26.0	-3.4	-1.1
Information	20.8	20.2	20.1	-0.7	-0.1
Financial Activities	44.8	44.3	43.8	-1.0	-0.5
Professional & Business Services	93.4	92.1	89.5	-3.9	-2.6
Professional, Scientific, & Technical Services	38.6	37.9	37.0	-1.6	-0.9
Management of Companies & Enterprises	10.0	10.0	10.0	0.0	0.0
Administrative, Support, & Waste Management	44.8	44.2	42.5	-2.3	-1.7
Educational & Health Services	113.6	117.0	115.2	1.6	-1.8
Educational Services	21.3	21.9	21.2	-0.1	-0.7
Health Care & Social Assistance	92.3	95.1	94.0	1.7	-1.1
Leisure & Hospitality	74.4	74.9	72.9	-1.5	-2.0
Other Services	29.8	29.7	29.4	-0.4	-0.3
Government	104.8	108.1	105.7	0.9	-2.4
Federal Government	12.3	12.3	12.4	0.1	0.1
State Government	28.5	29.8	28.9	0.4	-0.9
Local Government	64.0	66.0	64.4	0.4	-1.6
State and Local Government	92.5	95.8	93.3	0.8	-2.5

Nonfarm Employment (Smaller MSAs)

	Clarksville, TN-KY MSA		***Cleveland, TN MSA		Jackson, TN MSA	
	December 2009	January 2010	December 2009	January 2010	December 2009	January 2010
	Revised	Prelim.	Revised	Prelim.	Revised	Prelim.
Total Nonfarm	81,700	79,600	39,300	38,100	57,400	56,200
Total Private	62,100	60,700	33,600	32,500	45,000	43,800
Goods Producing	12,500	12,400	9,700	9,500	11,100	11,000
Mining, Logging & Construction	3,000	2,900	1,300	1,200	2,500	2,400
Manufacturing	9,500	9,500	8,400	8,300	8,600	8,600
Service Providing	69,200	67,200	29,600	28,600	46,300	45,200
Trade, Transportation, & Utilities	15,400	14,800	6,600	6,400	11,300	10,900
Wholesale Trade	1,900	1,900	800	800	2,600	2,600
Retail Trade	11,200	10,700	4,600	4,400	7,200	6,900
Transportation, Warehousing, & Utilities	2,300	2,200	1,200	1,200	1,500	1,400
Information	1,000	1,000	300	300	700	700
Financial Activities	2,600	2,600	1,600	1,500	1,700	1,700
Professional & Business Services	8,400	8,100	2,900	2,800	3,900	3,700
Educational & Health Services	10,200	10,000	5,900	5,700	9,000	8,700
Leisure & Hospitality	8,800	8,600	4,100	3,900	5,300	5,100
Other Services	3,200	3,200	2,500	2,400	2,000	2,000
Government	19,600	18,900	5,700	5,600	12,400	12,400
Federal Government	6,400	6,300	300	300	500	500
State Government	3,300	2,800	700	600	2,000	2,000
Local Government	9,900	9,800	4,700	4,700	9,900	9,900
State and Local Government	13,200	12,600	5,400	5,300	11,900	11,900

	Johnson City, TN MSA		Kingsport/Bristol, TN-VA MSA		***Morristown, TN MSA	
	December 2009	January 2010	December 2009	January 2010	December 2009	January 2010
	Revised	Prelim.	Revised	Prelim.	Revised	Prelim.
Total Nonfarm	77,300	75,000	115,700	113,700	44,700	43,800
Total Private	59,800	58,400	99,100	97,300	37,500	36,600
Goods Producing	10,600	10,400	26,800	26,400	12,500	12,400
Mining, Logging & Construction	2,600	2,500	6,300	6,000	1,700	1,700
Manufacturing	8,000	7,900	20,500	20,400	10,800	10,700
Service Providing	66,700	64,600	88,900	87,300	32,200	31,400
Trade, Transportation, & Utilities	13,200	12,800	23,100	22,700	10,100	9,800
Wholesale Trade	2,300	2,200	4,300	4,300	1,800	1,800
Retail Trade	9,800	9,500	15,000	14,700	5,900	5,700
Transportation, Warehousing, & Utilities	1,100	1,100	3,800	3,700	2,400	2,300
Information	2,000	2,000	2,200	2,200	500	500
Financial Activities	4,400	4,400	4,300	4,200	1,200	1,200
Professional & Business Services	6,800	6,600	8,000	7,700	3,000	2,900
Educational & Health Services	12,600	12,300	18,800	18,600	5,700	5,500
Leisure & Hospitality	7,700	7,400	11,600	11,300	3,200	3,000
Other Services	2,500	2,500	4,300	4,200	1,300	1,300
Government	17,500	16,600	16,600	16,400	7,200	7,200
Federal Government	2,600	2,700	1,100	1,100	400	400
State Government	6,500	5,600	2,200	2,200	1,300	1,300
Local Government	8,400	8,300	13,300	13,100	5,500	5,500
State and Local Government	14,900	13,900	15,500	15,300	6,800	6,800

*** These metro areas had their funding restored by BLS, effective June 2009

Clarksville MSA is Montgomery County, Stewart County, Christian County, KY, & Trigg County, KY. **Cleveland MSA** is Bradley & Polk counties. **Jackson MSA** is Chester & Madison counties. **Johnson City MSA** is Carter, Unicoi, & Washington counties. **Kingsport-Bristol MSA** is Hawkins County, Sullivan County, Scott County, VA, Washington County, VA, & Bristol City, VA. **Morristown MSA** is Grainger, Hamblen, & Jefferson counties.

Tennessee Department of Labor & Workforce Development
 Employment Security Division, Research & Statistics
 220 French Landing Drive
 Nashville, TN 37243

FIRST CLASS MAIL
 POSTAGE & FEES PAID
 BUREAU OF
 LABOR STATISTICS
 PERMIT NO. G-738

Phone: 615-741-2284
 Fax: 615-532-9434
 E-mail: wayne.meisels@tn.gov



The Tennessee Department of Labor and Workforce Development is committed to principles of equal opportunity, equal access, and affirmative action. Auxiliary aids and services are available upon request to individuals with disabilities.
 Tennessee Department of Labor and Workforce Development; Authorization 337607; This public document was promulgated for electronic use only.

We're on the Web
www.tennessee.gov/labor-wfd
 Check out The Source at
www.sourcetn.org



The Tennessee Department of Labor and Workforce Development is an equal opportunity employer/program. Auxiliary aids and services are available upon request. TTY: 615-532-2879 or 1-800-848-0299

U.S. Consumer Price Index January 2010

Group	Index	Percent Change	
		Yearly	Monthly
U.S. City Average			
All Items (1982-84=100) / All Urban Consumers	216.687	2.6	0.3
All Items (1982-84=100) / Wage Earners & Clerical Workers	212.568	3.3	0.4
South			
All Items (1982-84=100) / All Urban Consumers	210.056	2.8	0.3
All Items (1982-84=100) / Wage Earners & Clerical Workers	207.405	3.7	0.3

