



# Reducing Breast Cancer Disparities: A Call to Action

June 30<sup>th</sup>, 2021

# Welcome & Introductions



**Robyn Taylor, MBA**  
*Project Officer*  
NACDD



**Amy Chart, LMSW**  
*Subject Matter Expert*  
Community Partnerships Director | TDH



**Crissy Hartsfield, MBA**  
*Project Lead*  
Strategic Initiatives Director | TDH



**Katherine Witcher, MPH CHES**  
*Subject Matter Expert*  
RWH Health Educator | TDH



**Ellie Berardi, MPH BSN RN**  
*Project Assistant*  
TBCSP Director | TDH



**Elizabeth Hart**  
*Subject Matter Expert*  
Faith-Based and Community Engagement  
Director | TDH



**Audrey Stach, DVM MPH**  
*Subject Matter Expert*  
Epidemiologist | TDH

# Waterfall Chat

- In the chat, type the following but DO NOT post until we say GO
  - Name
  - Organization
  - Why Health Equity is important to you



# Objectives



## DEFINING THE PROBLEM

Define the landscape of breast cancer and the impact of disparities in Tennessee



## WORKING TOWARDS A SOLUTION

Discuss TBCSP's integrated approach to reducing breast cancer disparities



## CALL TO ACTION

Present a call to action for the community



## MOVING FORWARD

Discuss next steps including sustainability efforts



# In This Moment Together

Intro to 'Using Data to Reduce Breast Cancer Disparities'





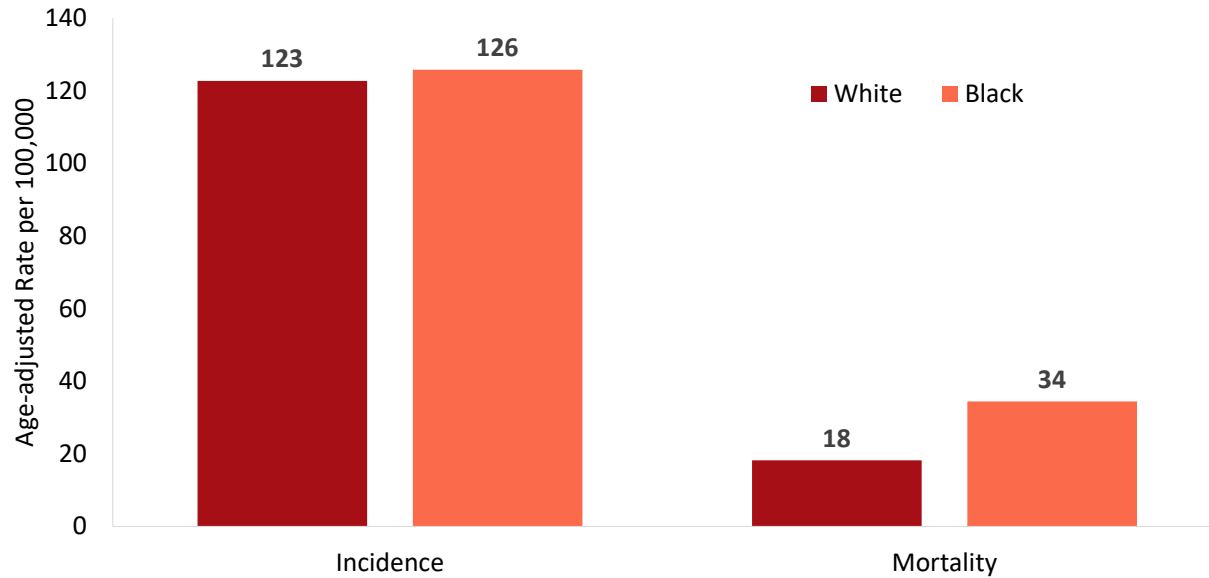
# Defining the Problem

# Data Analysis Plan

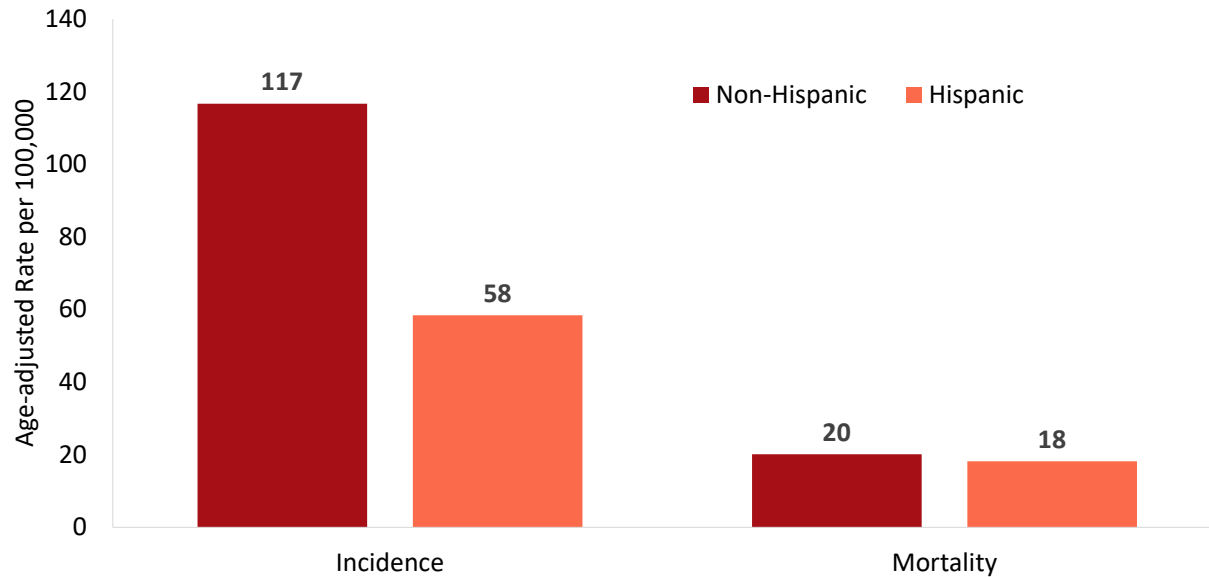
- Incidence and mortality
- Mammography facilities
- Screening mammograms among Medicare enrollees
- Health provider shortage areas & medically underserved areas
- Small Area Health Insurance Estimates
- Social Vulnerability Index
- Tennessee Breast and Cervical Screening Program



### Breast Cancer Incidence and Mortality by Race Tennessee, 2009-2018

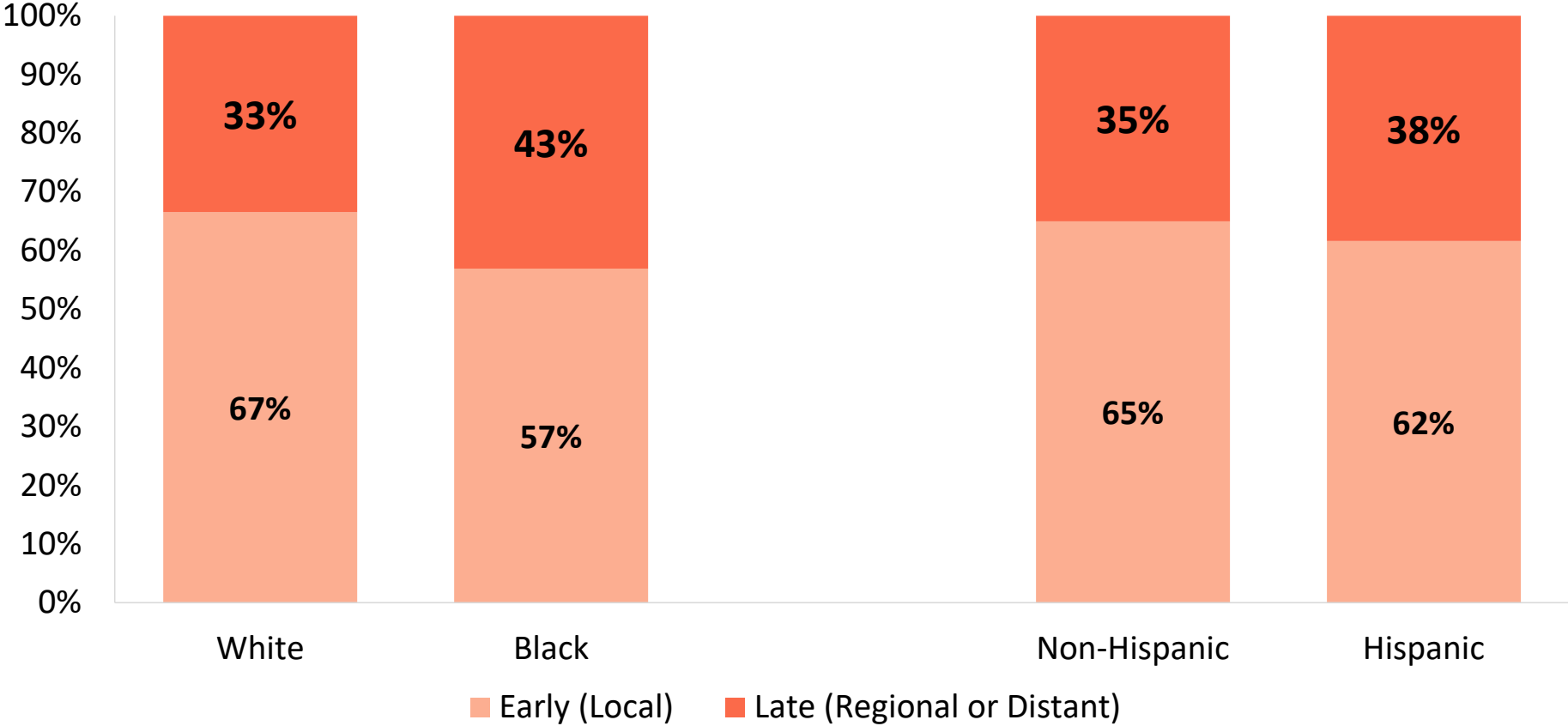


### Breast Cancer Incidence and Mortality by Ethnicity Tennessee, 2009-2018

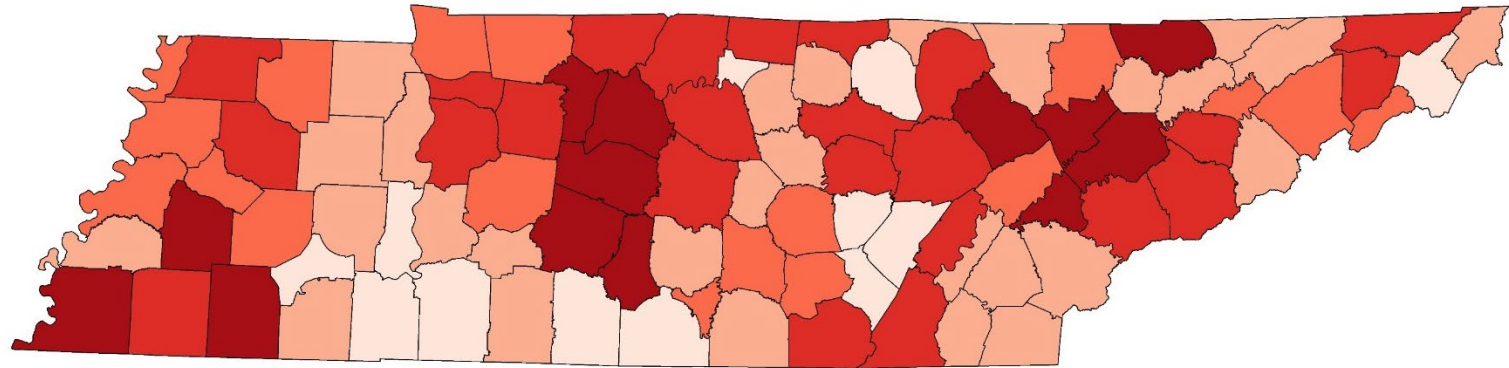




# Breast Cancer Diagnosis Stage by Race or Ethnicity Tennessee, 2009-2018



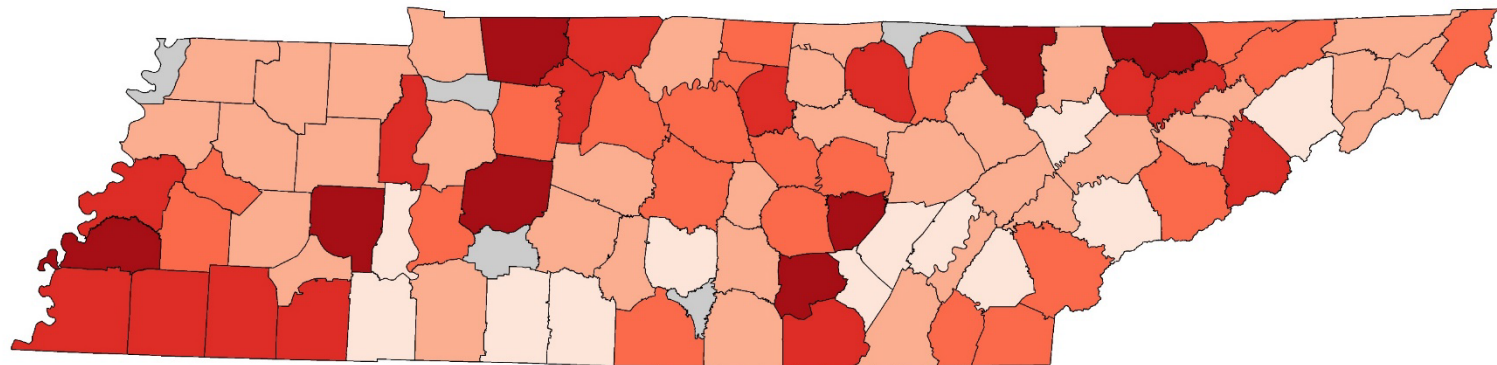
# Breast Cancer Incidence, 2009-2018



Number of Cases per 100,000 Females



# Breast Cancer Mortality, 2009-2018

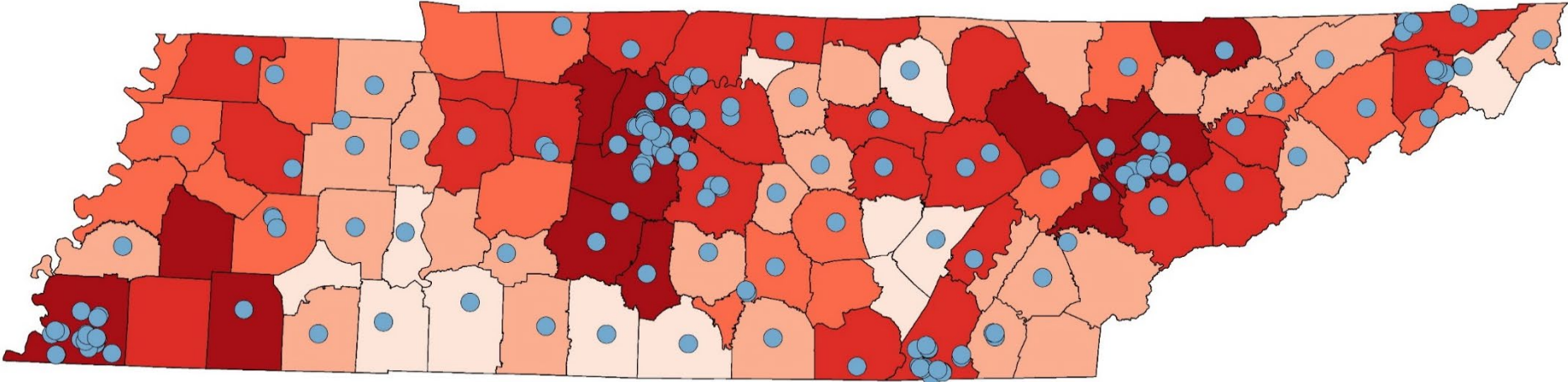


Number of Deaths per 100,000 Females



Audrey Stach

# Breast Cancer Incidence, 2009-2018 and FDA Approved Mammography Facilities



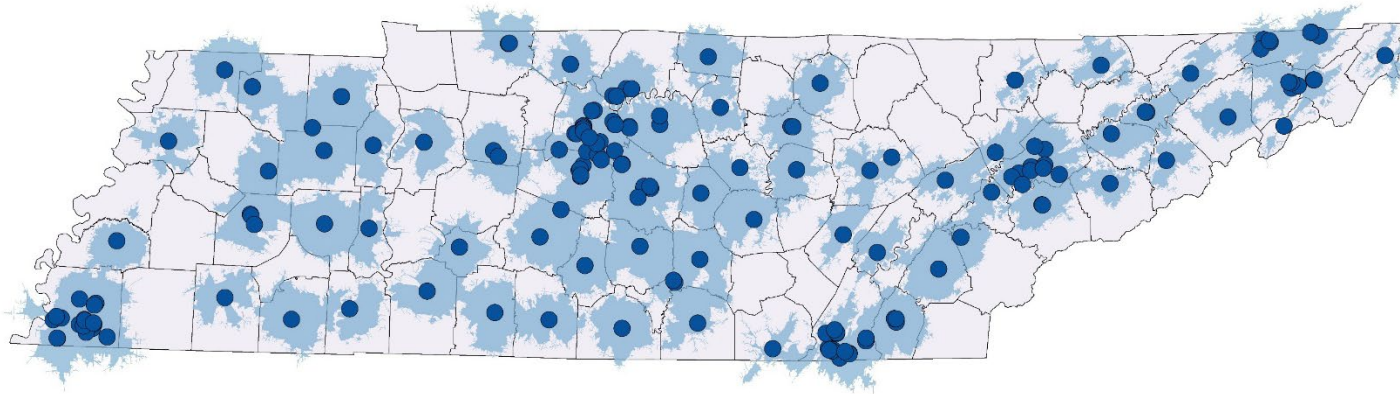
**Number of Cases per 100,000 Females**



Audrey Stach

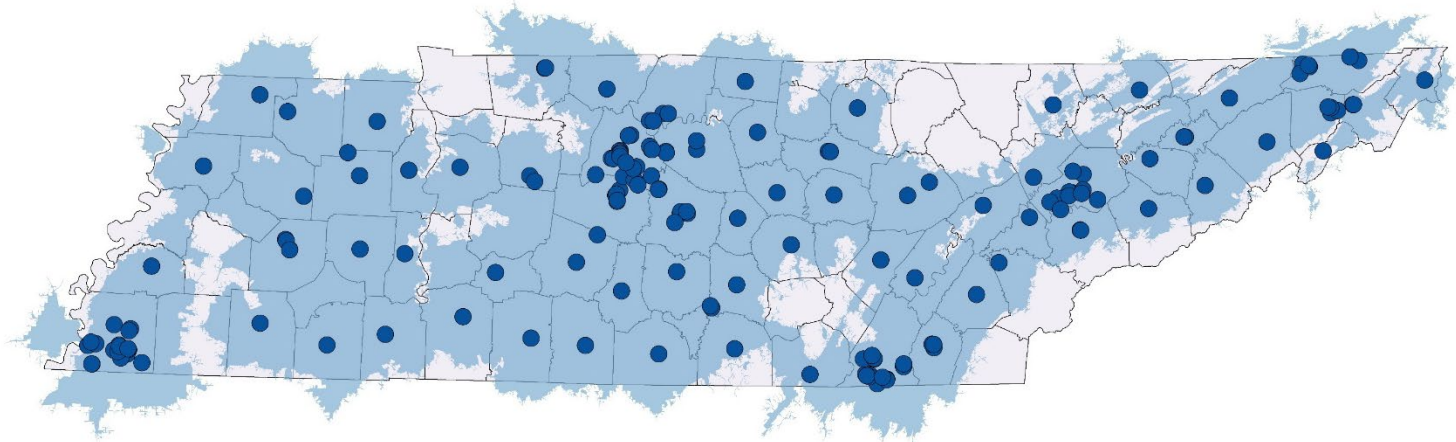


## Locations of FDA Approved Mammography Facilities with 20-Minute Drive-Times



- FDA Approved Facility
- 20-Minute Drive-Time

## Locations of FDA Approved Mammography Facilities with 30-Minute Drive-Times



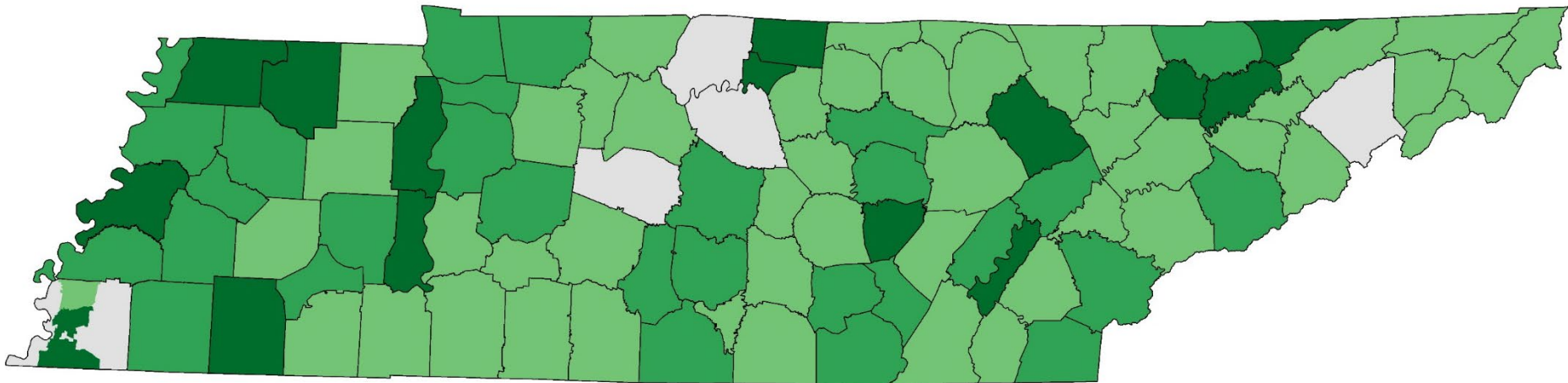
- FDA Approved Facility
- 30-Minute Drive-Time

Audrey Stach





# Designated Health Provider Shortage Areas Low Income Population -- Primary Care Providers



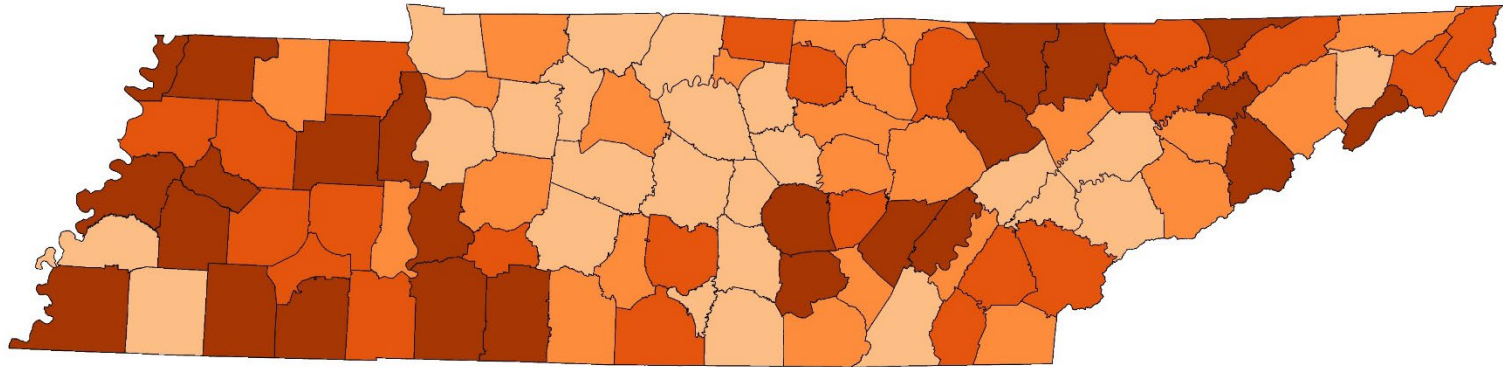
## HPSA Score



Audrey Stach



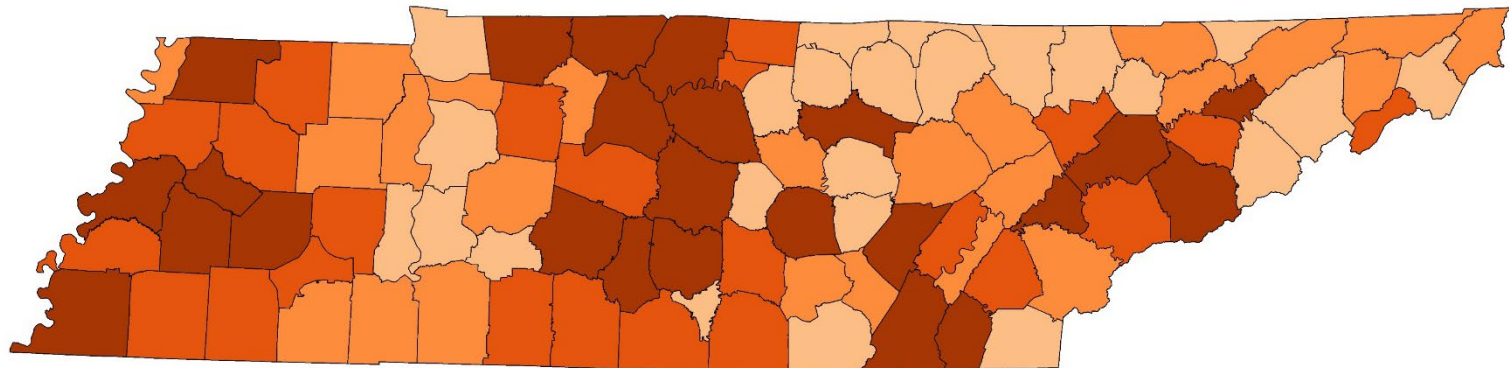
## Social Vulnerability Index Overall Score



### SVI Score

Low Low to Moderate Moderate to High High

## Social Vulnerability Index Minority Status and Language



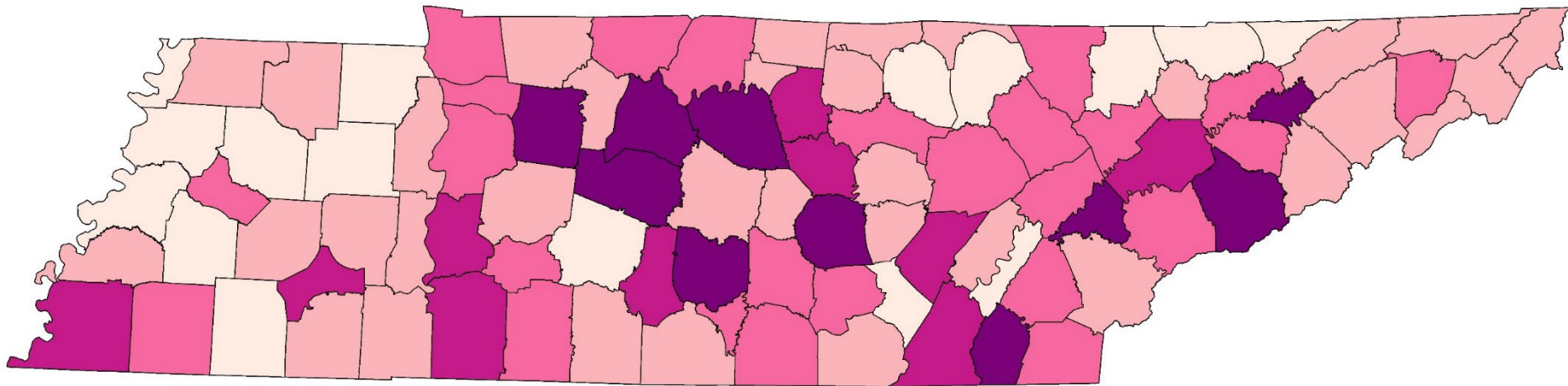
### SVI Score

Low Low to Moderate Moderate to High High

Audrey Stach



# Females Aged 40-64 Who Are Uninsured and <250% FPL



## Percent of Female Population Aged 40-64



# High Risk Counties

- Data collection, weighted scores
  - Breast cancer mortality rate, per 100,000 (50%)
  - Female Medicare enrollees with a screening mammogram, percentage (20%)
  - CDC SVI (20%)
  - FDA approved mammography facilities per 100,000 women aged 40-74 (10%)
- Statistically significant black to white mortality ratio
- Subjective selection
- County selection





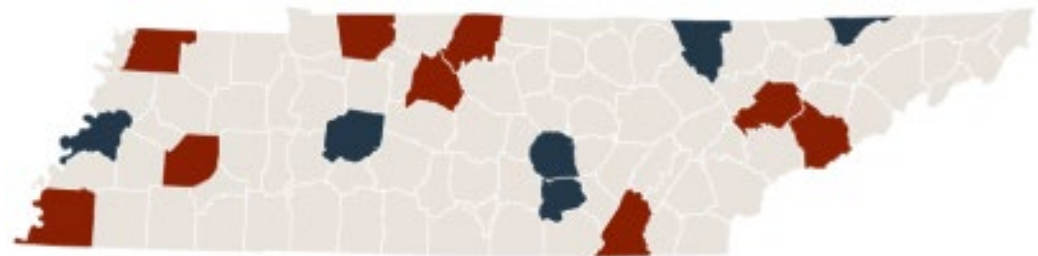
# HR Counties Snapshot

- **All counties selected**

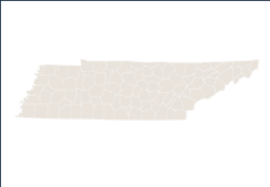
- Davidson
- Grundy
- Hamilton
- Hancock
- Hickman
- Knox
- Lauderdale
- Madison
- Montgomery
- Obion
- Scott
- Sevier
- Shelby
- Sumner
- Warren

- **Counties with statistically significant black to white mortality ratio**

- Davidson
- Hamilton
- Knox
- Madison
- Montgomery
- Obion
- Sevier
- Shelby
- Sumner



# Tennessee Snapshot



## Tennessee

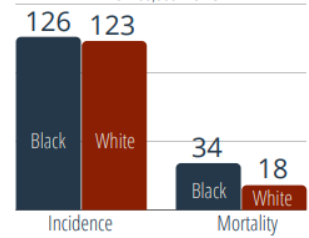
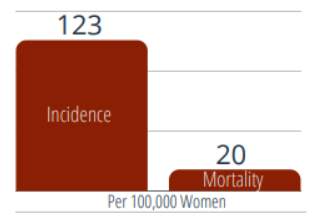
BREAST CANCER SNAPSHOT

### TENNESSEE DEPARTMENT OF HEALTH

710 James Robertson Pkwy - Nashville, TN 37243  
 877-969-6636 (TBCSP Hotline)  
<https://www.tn.gov/health/health-program-areas/fhw/rwh/tbcsp.html>

**189**  
 Number of FDA Approved Mammography Facilities within Tennessee

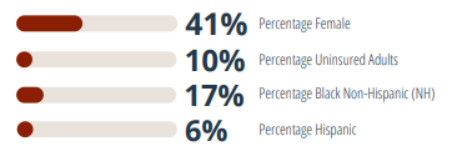
### CANCER-RELATED DATA



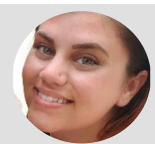
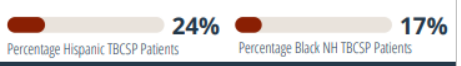
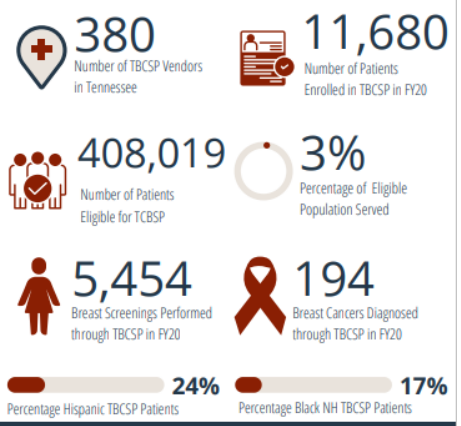
Black women are almost **twice** as likely to die from breast cancer compared to white women

### SOCIODEMOGRAPHIC INFORMATION

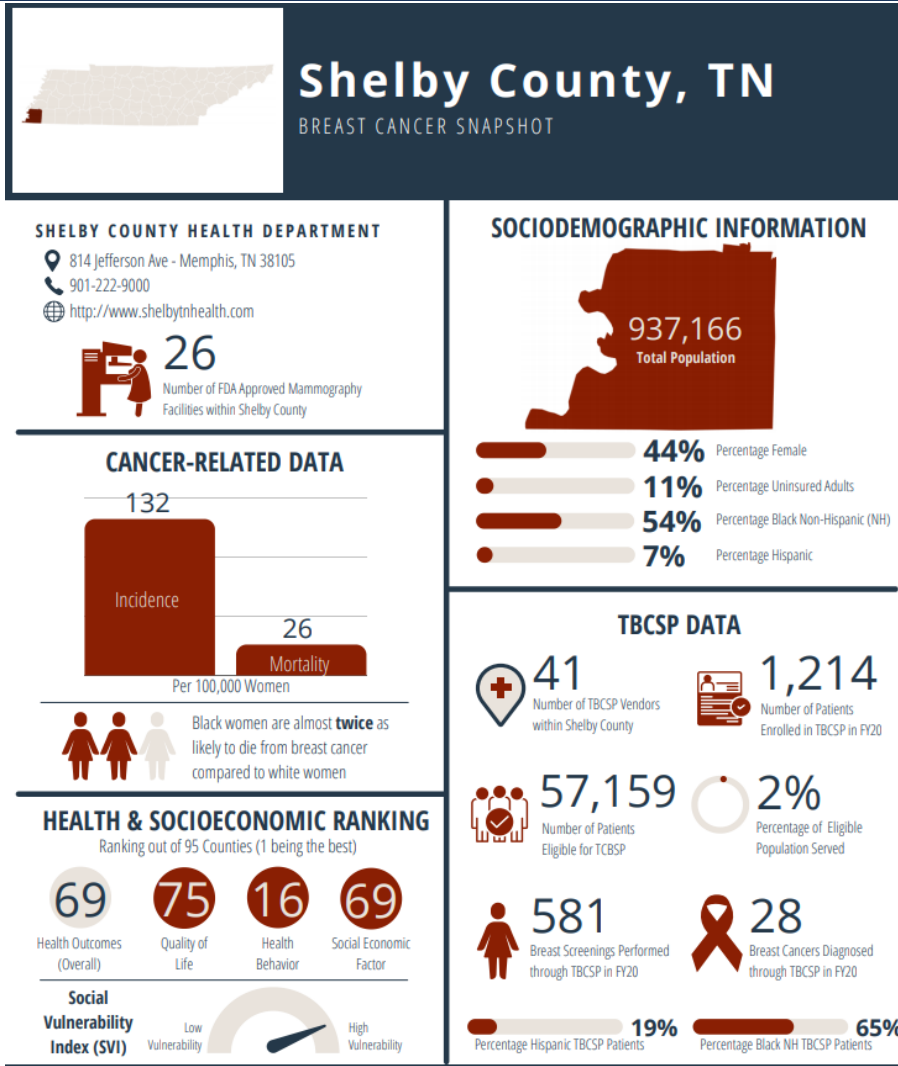
**6,829,174**  
 Total Population



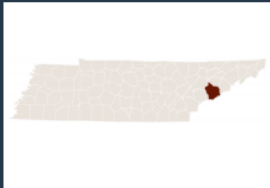
### TBCSP DATA



# Shelby County Snapshot



# Sevier County Snapshot



## Sevier County, TN

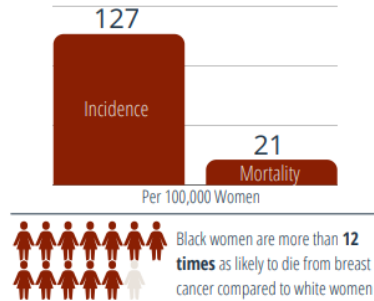
BREAST CANCER SNAPSHOT

### SEVIER COUNTY HEALTH DEPARTMENT

719 Middle Creek Rd - Sevierville, TN 37862  
 865-453-1032  
<https://www.seviercountyttn.org/health-department.html>



### CANCER-RELATED DATA

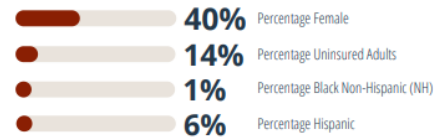
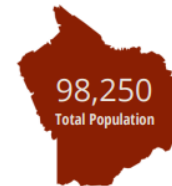


### HEALTH & SOCIOECONOMIC RANKING

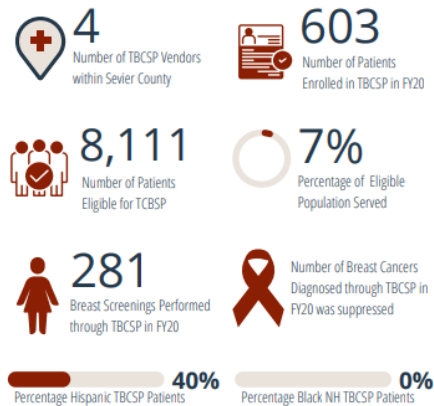
Ranking out of 95 Counties (1 being the best)



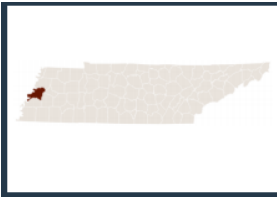
### SOCIODEMOGRAPHIC INFORMATION



### TBCSP DATA



# Lauderdale County Snapshot



## Lauderdale County, TN

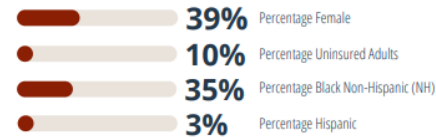
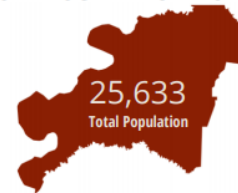
BREAST CANCER SNAPSHOT

### LAUDERDALE COUNTY HEALTH DEPARTMENT

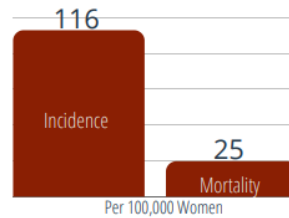
500 Highway 51 S - Ripley, TN 38063  
731-635-9711



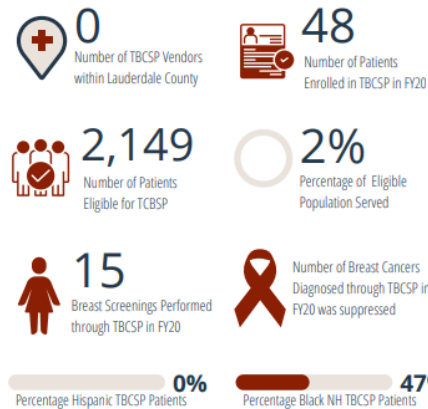
### SOCIODEMOGRAPHIC INFORMATION



### CANCER-RELATED DATA



### TBCSP DATA



### HEALTH & SOCIOECONOMIC RANKING

Ranking out of 95 Counties (1 being the best)



# Current Challenges

Identifying  
And  
Overcoming  
Barriers

Late  
Stage  
Diagnoses

Missed or  
Delayed  
Screening  
Opportunities

Inequity in  
Screening  
Guidelines

Returning to  
Screening  
After  
COVID



# Poll

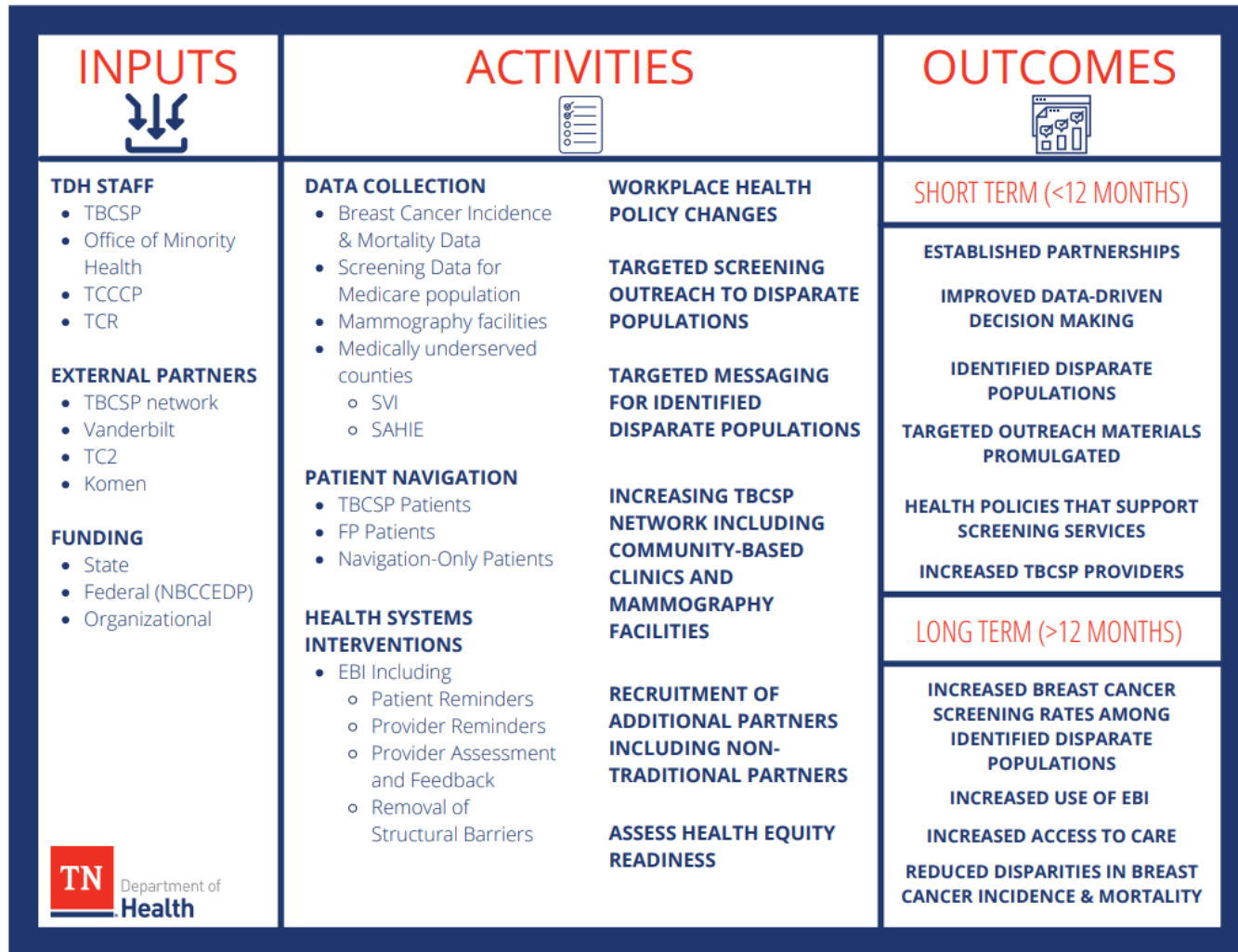
**Are there any unique challenges or barriers in your community?**



**Working Towards a  
Solution: The Work of  
TBCSP**



# Logic Model



# TBCSP

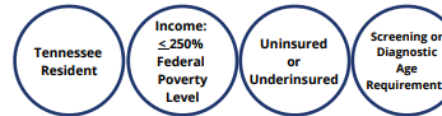
- About TBCSP
- Who we serve
- Reimbursement

## Tennessee Breast and Cervical Screening Program

Fiscal Year 2020 (July 1, 2019 - June 30, 2020)

The Tennessee Breast and Cervical Screening Program (TBCSP) operates in all 95 counties by providing screening and diagnostic procedures for breast or cervical cancer and enrollment into TennCare for treatment for eligible individuals. The TBCSP aims to serve the most vulnerable populations, specifically those who are low-income and uninsured or underinsured.

### Program Eligibility Guidelines:



Nearly 400 vendors, including local health departments, radiologists, breast centers, and Federally Qualified Health Centers, provide services throughout Tennessee.



### 11,680 women served

Among more than 86,000 eligible women in Tennessee, almost 8% received cancer screening through TBCSP

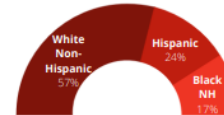


Over 10,300 breast services provided



194 breast cancers diagnosed

Routine Breast Screenings by Race/Ethnicity

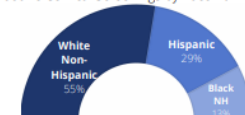


Over 4,300 cervical services provided



234 cervical pre-cancers and cancers diagnosed

Routine Cervical Screenings by Race/Ethnicity



46 men received breast services through TBCSP in FY2020.



Men are eligible for diagnostic breast services if they meet the other program eligibility requirements and can be enrolled in TennCare if breast cancer is diagnosed.

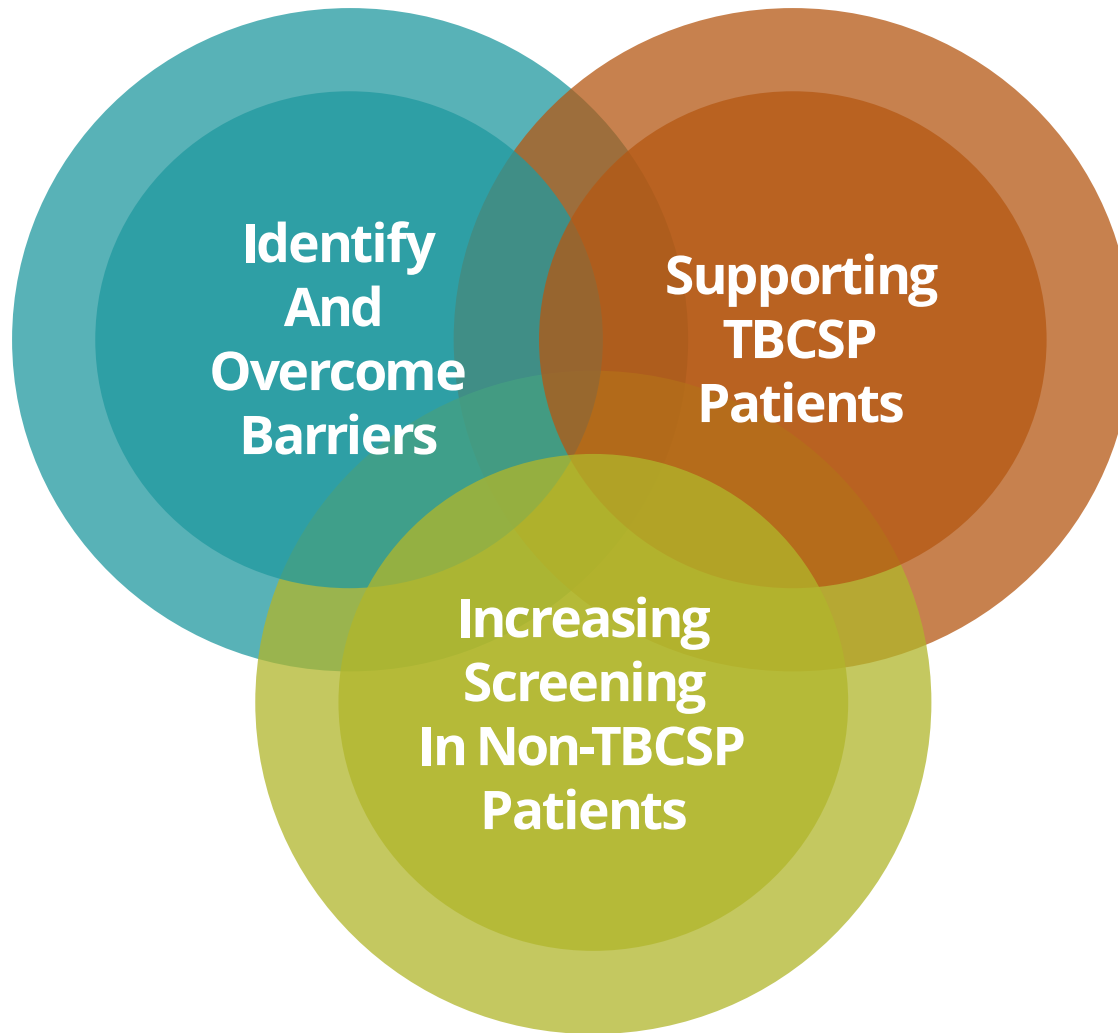


TBCSP Hotline: 877-969-6636

Tennessee Breast and Cervical Screening Program (TBCSP)  
Tennessee Department of Health  
710 James Robertson Parkway, 8th Floor  
Nashville, TN 37243



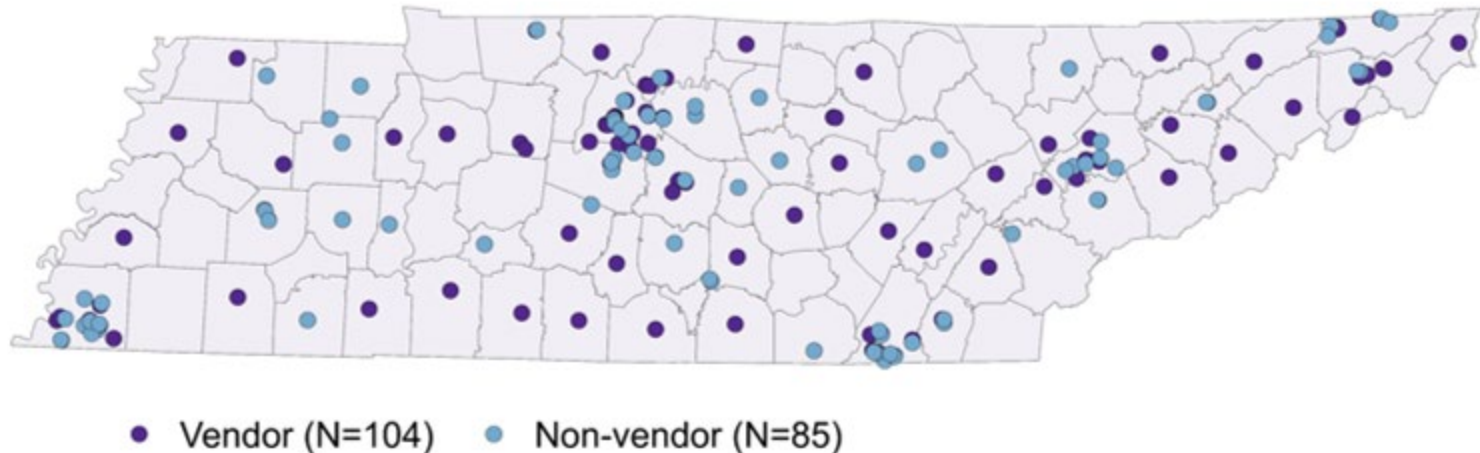
# Patient Navigation



# Increasing Network

- FQHC and Community Health Centers
- Mammography facilities

Locations of FDA Approved Mammography Facilities  
TBCSP Vendors vs. Non-Vendors



# Recruiting Partners

## Non-Traditional Partners

- The Arts & Business Council of Greater Nashville (ABC)
- Sororities

## Traditional Partners

- Managed Care Organizations
- Department of Mental Health



# Environmental Approaches for Sustainable Cancer Control

Environmental approaches promote health and support healthy behaviors in states, communities, and smaller settings such as work sites and businesses.

- TBCSP Related Activities:
  - Working with clinics within healthcare systems to enhance clinical service delivery among their appropriate patient population through implementation of evidence-based interventions.
  - Inform policies that increase access to cancer screening where women live and work.



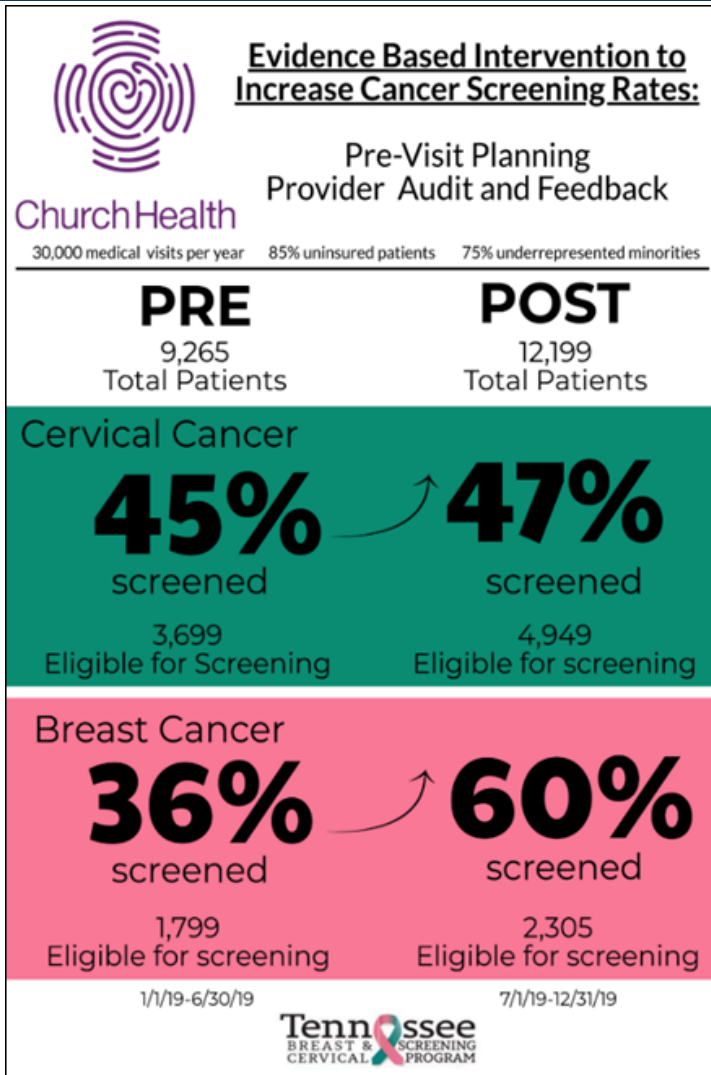
# Environmental Approaches: Health Systems Intervention Program

The National Breast and Cervical Early Detection Program identifies the **three priority strategies** of this program that are conducted through the work of **four EBIs**.

INCREASE COMMUNITY DEMAND	INCREASE COMMUNITY ACCESS	ENHANCE PROVIDER SERVICE DELIVERY
<p><b>Client Reminders:</b></p> <ul style="list-style-type: none"><li>• Electronic Health Record Patient Flags</li><li>• Chart Audits</li><li>• Chart Flags</li></ul> <p>Small media Group Education One-on-one Education</p>	<p><b>Reduce Structural Barriers:</b></p> <ul style="list-style-type: none"><li>• Reduce Administrative Burdens</li><li>• Provide Appointment Scheduling</li><li>• Locate Alternative Screening Sites</li><li>• Create Alternative Screening Hours</li><li>• Provide Transportation</li><li>• Provide Translation Services</li><li>• Provide Child Care</li></ul> <p>Reduce Client Out-of-Pocket Costs</p>	<p><b>Provider Reminders:</b></p> <ul style="list-style-type: none"><li>• Electronic Health Record Patient Flags</li><li>• Chart Flags</li></ul> <p><b>Provider Assessment and Feedback</b></p> <ul style="list-style-type: none"><li>• Review current practices</li><li>• Report to Providers on Patient Outcomes</li></ul>



# Environmental Approaches: Example – Church Health Center





# Environmental Approaches: Bridge the Gap to Wellness


A free program for Tennessee employers to access strategies to improve the health and wellbeing of their employees.


## Bridge the Gap to Wellness

The TN Breast and Cervical Screening Program presents a free program for Tennessee employers to access strategies to improve the health and wellbeing of their employees and bridge the gap to wellness.






In 2017, there were over **5,300** new cases of breast and cervical cancers diagnosed in Tennessee and over **1,000** women died.

**Cancer not only leads to economic burdens for employees but also for employers.**  
Women with breast or cervical cancer can miss productive days at work and home due to illness.


 Approximately 3 out of 10 female workers (23%) do not have a current mammogram.

 Approximately 2 out of 10 female workers (18%) do not have a current cervical cancer screening.

**BRIDGES TO WELLNESS INCLUDE:**

-  Informational resources such as brochures about our program, breast & cervical health, healthy living, vaccinations and more
-  Workplace screening and sign-up eligible employees for the program
-  Arrangements for a mobile mammography bus to come to your workplace to screen eligible employees on site
-  Support in designing policies that promote employee health and preventative care
-  Lunch & Learns to educate about the importance of cancer screening and current recommendations

**TN** Department of Health  
To find out more information, contact:  
Amy Chart, LMSW | Community Partners Director  
Amy.Chart@tn.gov or 615-741-4007

 Department of Health. Authorization No. 355630.  
This Electronic publication was promulgated at zero cost.  
April 2021



# Targeted Outreach

- Messaging
  - Translated materials
  - Spanish mobile mammography events through Baptist
- Outreach to disparate population
  - Mobile mammography units to areas with no FDA approved facilities
  - Toolkit for evidence-based outreach strategies to use in identified high risk counties



Te llevamos los servicios de mamografía.

April 1, 2021	Mount Moriah Police Precinct, 2602 Mount Moriah Road, Memphis, TN 38115 Albertha Bragg: <a href="mailto:ambragg7@gmail.com">ambragg7@gmail.com</a> or 901.
April 17, 2021	Saint Michael Church, 3863 Summer Avenue, Memphis, TN 38122 Alexis Zamora: 901-323-0896
June 12, 2021	El Mercadito de Memphis, 3766 Ridgeway Road, Memphis TN 38115 Camen Hurler: <a href="mailto:c_hurler@yahoo.com">c_hurler@yahoo.com</a> or 901-489-0677 (Ben)
June 14, 2021	Gaisman Park, 4223 Macon, Memphis, TN 38122 Jatzley Greenfield: <a href="mailto:gaismamparka@gmail.com">gaismamparka@gmail.com</a> or 262-901-5100
June 24, 2021	Newstart Family & Obstetrical Care, 3530 Hickory Hill Road, Memphis, TN 38115 Coordinator: TBD 901-881-6686

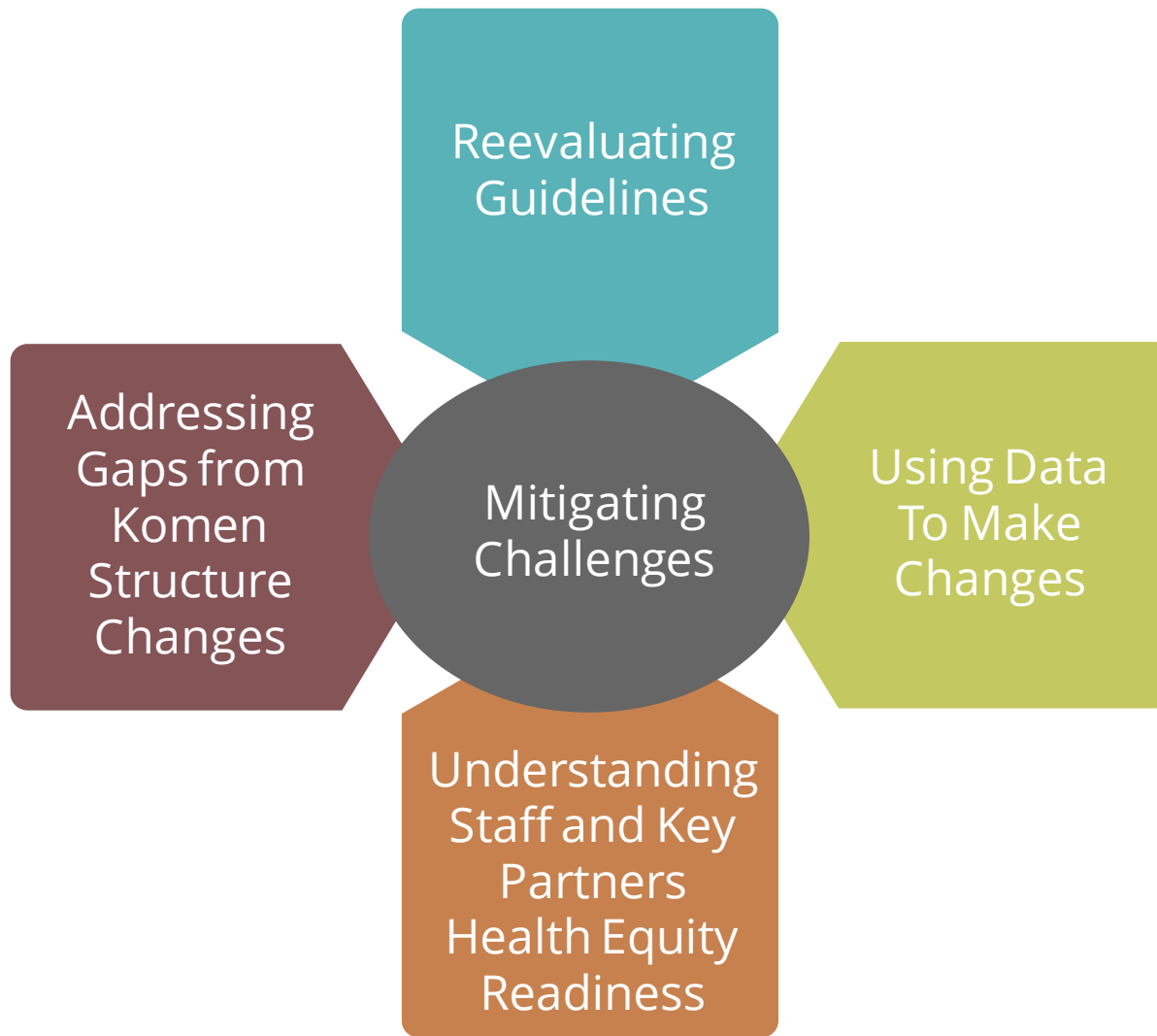
**Hora: 8:30 am to 3:00 pm**

**BAPTIST** | WOMEN'S HEALTH CENTER  
baptistonline.org/womens | 901-227-PINK (7465)

Mejorate.

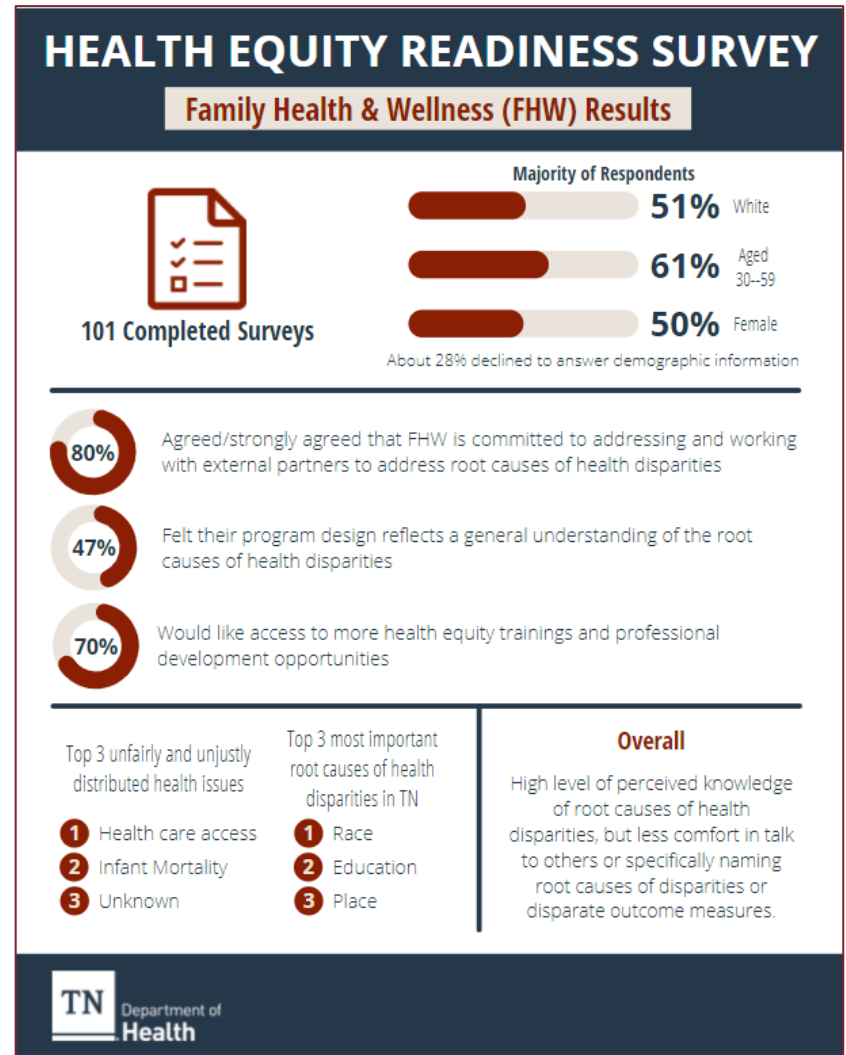


# Mitigating Challenges



# Health Equity Readiness Survey

- Surveyed FHW Division
- Replicating for field staff and key partners



# TDH – Health Disparities Taskforce

“The Tennessee Department of Health engages stakeholders from non-profit and faith-based organizations, academia, health care providers and local and state government officials to **collaboratively generate responsive solutions and policies** to reduce disparities and to ensure equitable access to health care, resources and services.”

<https://www.tn.gov/content/tn/health/health-program-areas/division-of-health-disparities-elimination-.html>



**Are you willing to sustain a relationship with TDH to promote health equity?**



**A Call to Action**

# Meeting the Needs of the Community

- Survey
  - Would you, as stakeholders, define the problem in a similar way?
  - What disparities are we missing?
  - What challenges are we missing?







**Moving Forward**

# Next Steps

- Sustainability
  - Statewide breast cancer coalition workgroup
  - Stakeholder meeting annually or quarterly
  - Breast Cancer Screening Workgroup
    - Survey for participation: <https://forms.gle/2WPjz3CeB62nr3TF8>
    - Please respond by Friday, July 30<sup>th</sup> for consideration



# For More Information

**Recorded Presentation, Slides, Data Maps, etc. will be available on the website:**

<https://www.tn.gov/content/tn/health/health-program-areas/fhw/rwh/breast-cancer-disparities.html>

**Patient or information hotline:**

TBCSP Hotline  
877-969-6636



# Contact Information

**Crissy Hartsfield, MBA**

Strategic Initiatives Director

[Crissy.Hartsfield@tn.gov](mailto:Crissy.Hartsfield@tn.gov)

**Amy Chart, LMSW**

Community Partnerships Director

[Amy.Chart@tn.gov](mailto:Amy.Chart@tn.gov)

**Elizabeth Berardi, MPH BSN RN**

TBCSP Director

[Elizabeth.Berardi@tn.gov](mailto:Elizabeth.Berardi@tn.gov)

**Katherine Witcher, MPH CHES**

Health Educator

[Katherine.Witcher@tn.gov](mailto:Katherine.Witcher@tn.gov)

**Audrey Stach, DVM MPH**

Epidemiologist

[Audrey.Stach@tn.gov](mailto:Audrey.Stach@tn.gov)

**Elizabeth Hart**

OFBCE Director

[Elizabeth.Hart@tn.gov](mailto:Elizabeth.Hart@tn.gov)