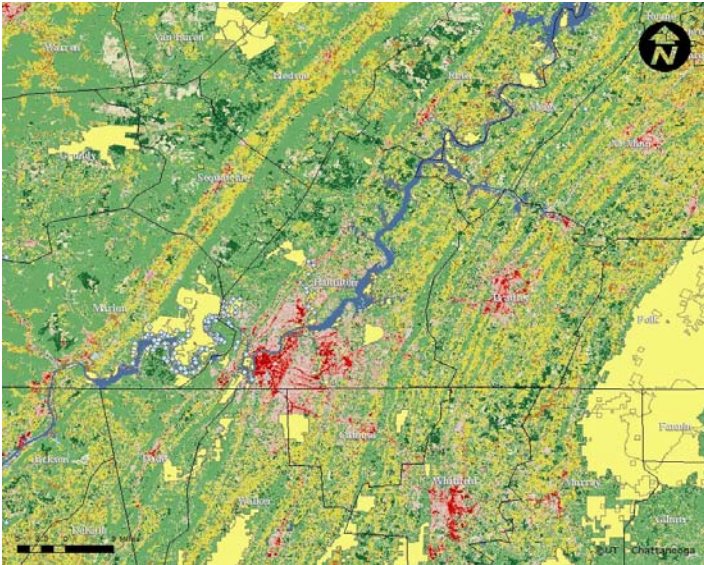


# COMMUNITY LAND USE PLANNING FOR WATER QUALITY

The **Southeast Watershed Forum** is pleased to announce a new addition to its **Community Quality Growth** training series designed to help cities and counties choose cost-effective land use strategies that provide for economic growth and quality of life too!

**Land Use Planning for Water Quality** invites communities to shift from thinking first about where development should occur to thinking first about what natural resources should be preserved, and then where development should be located.



## Communities Can

- Preserve natural resources that reduce runoff & stormwater flooding
- Protect drinking water, wildlife & high-quality rivers & streams
- Enhance recreation & tourism opportunities
- Support agriculture & forestry
- Reduce the cost of government services
- Maintain quality of life

**Participants receive training materials, extensive mapping services and a course handbook.**

**The course can be tailored to an individual community or used for multiple communities.**

**Both full-day and half-day versions are available and a series of community workshops can be developed to help your community develop its conservation plan.**

## WHO SHOULD ATTEND?

City/County Planners  
City/County Public Works  
Engineers  
Stormwater Managers  
Developers and Construction Companies  
Council of Governments

State Depts. of Transportation  
Regional Development Centers  
RC&D Councils  
Urban Foresters  
Watershed Associations  
Conservation Organizations

For More Information:

Jane Fowler  
865-450-5188 /jf@southeastwaterforum.org

Christine Olsenius  
410-849-2975 /co@southeastwaterforum.org



Southeast Watershed Forum:  
One Vantage Way, Suite D-105  
Nashville, TN 37228  
[www.southeastwaterforum.org](http://www.southeastwaterforum.org)  
[www.watershed-assistance.net](http://www.watershed-assistance.net)