

# **Tennessee Felon Population Update**

**May 2009**

**Prepared By:**

**Tennessee Department of Correction  
Policy, Planning, and Research Section**

**TENNESSEE FELON POPULATION UPDATE**  
**TABLE OF CONTENTS**  
**May 2009**

Felon Population by Primary Offense Fiscal Year 2003/2004 to Present	1
Felon Population Projections vs. Actual Graph July 2005 to Present	2
Felon Inmate Population Projections vs. Actual Fiscal Year 2007/2008 to Present	3
Incarcerated Felon Population Fiscal Year 2003/2004 to Present	4
Incarcerated Felon Populations Fiscal Year 1996/1997 - 2007/2008	5
Local Jail Populations by Category Fiscal Years 2007/2008 to Present	6
Felon Admissions in Tennessee Fiscal Year 2008/2009	7
Felon Admissions in Tennessee Fiscal Year 2007/2008	8
Felon Admissions in Tennessee Fiscal Years 1997/1998 - 2007/2008	9
Felon Releases in Tennessee Fiscal Year 2008/2009	10
Felon Releases in Tennessee Fiscal Year 2007/2008	11
Felon Releases in Tennessee Fiscal Years 1997/1998 - 2007/2008	12
Projected Felon Admissions vs. Actual Fiscal Year 2007/2008 - 2008/2009	13
Projected Felon Releases Vs. Actual Fiscal Year 2007/2008 - 2008/2009	14
Community Services Population Fiscal Years 2002/2003 to Present	15
Community Services Projections Vs. Actual July 2007 to Present	16
Community Services Population Fiscal Years 1996/1997 - 2007/2008	17
Parole Grant Rates in Tennessee Fiscal Years 2003/2004 to Present	18
Parole Population Fiscal Years 2003/2004 to Present	19
Parole Population Projections vs. Actual Graph Fiscal Year 2006/2007 to Present	20

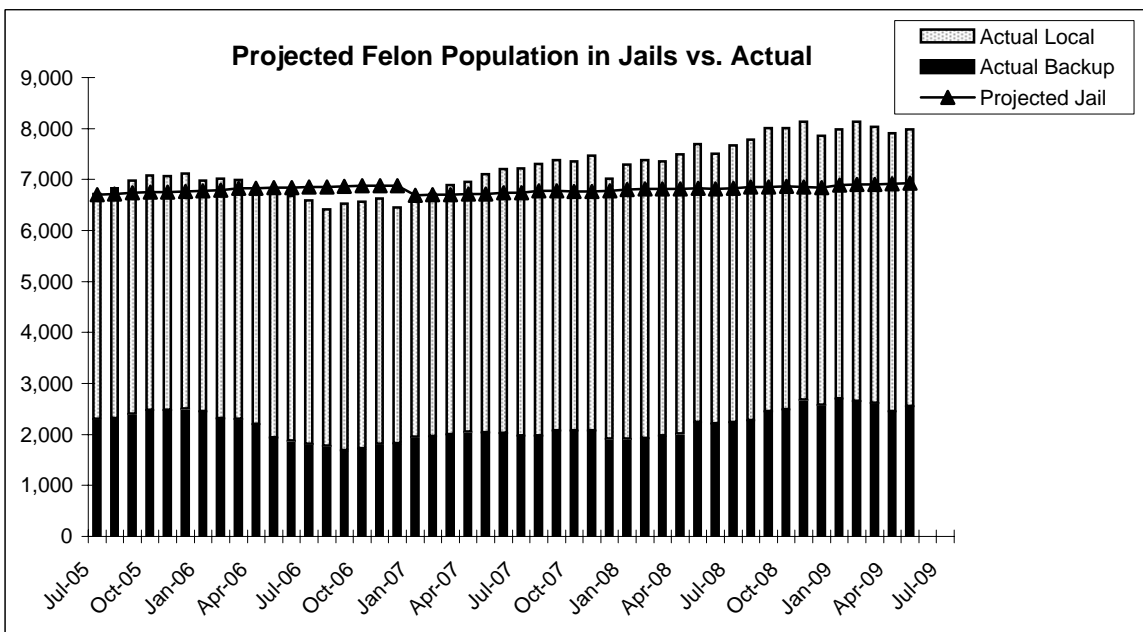
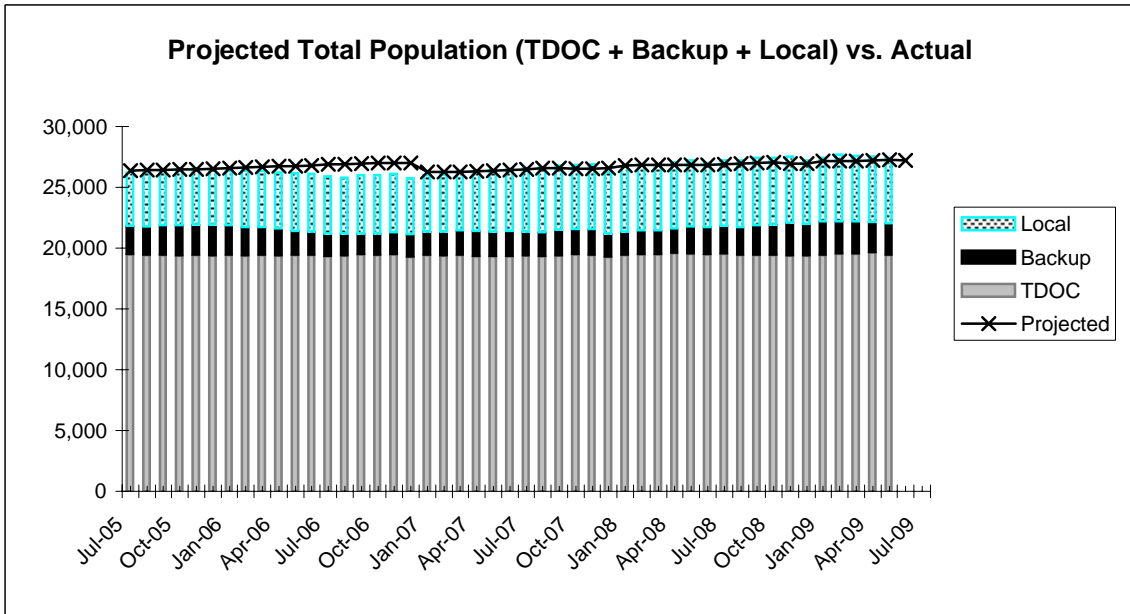
**TDOC POPULATION BY PRIMARY OFFENSE  
AS OF April 30, 2009\*\***

	TOTAL POP.	Monthly Change	Homicide	% OF TOTAL	Monthly Change	Kidnap	% OF TOTAL	Monthly Change	Sex Ofnder	% OF TOTAL	Monthly Change	Robbery	% OF TOTAL	Monthly Change	**Property	% OF TOTAL	Monthly Change	Assault	% OF TOTAL	Monthly Change	Drugs	% OF TOTAL	Monthly Change	Other	% OF TOTAL	Monthly Change
Averages																										
FY 03/04	19,213	0.4%	3,503	18.1%		247	1.3%		2,786	14.4%		3,348	17.3%		3,240	16.7%		2,170	11.2%		2,595	13.4%		1,324	6.8%	
FY 04/05	19,263	0.0%	3,543	18.4%		249	1.3%		2,797	14.5%		3,320	17.2%		3,144	16.3%		2,195	11.4%		2,682	13.9%		1,332	6.9%	
FY 05/06	19,248	0.0%	3,574	18.6%		242	1.3%		2,802	14.6%		3,164	16.4%		3,127	16.2%		2,187	11.4%		2,805	14.6%		1,347	7.0%	
FY 06/07	19,216	0.0%	3,593	18.6%		227	1.3%		2,815	14.6%		2,955	16.4%		3,140	16.2%		2,164	11.4%		2,930	14.6%		1,391	7.0%	
<b>2007/2008</b>																										
JUL	19,172	-0.2%	3,612	18.8%	3.1%	245	1.3%	-0.8%	2,809	14.7%	0.8%	2,868	15.0%	-14.3%	3,143	16.4%	-3.0%	2,141	11.2%	-1.3%	2,940	15.3%	13.3%	1,414	7.4%	6.8%
AUG	19,174	0.0%	3,616	18.9%	0.1%	245	1.3%	0.0%	2,808	14.6%	0.0%	2,867	15.0%	0.0%	3,143	16.4%	0.0%	2,136	11.1%	-0.2%	2,942	15.3%	0.1%	1,417	7.4%	0.2%
SEP	19,239	0.3%	3,622	18.8%	0.2%	247	1.3%	0.8%	2,808	14.6%	0.0%	2,894	15.0%	0.9%	3,118	16.2%	-0.8%	2,149	11.2%	0.6%	2,974	15.5%	1.1%	1,427	7.4%	0.7%
OCT	19,293	0.3%	3,624	18.8%	0.1%	246	1.3%	-0.4%	2,817	14.6%	0.3%	2,909	15.1%	0.5%	3,128	16.2%	0.3%	2,143	11.1%	-0.3%	2,994	15.5%	0.7%	1,432	7.4%	0.4%
NOV	19,300	0.0%	3,621	18.8%	-0.1%	248	1.3%	0.8%	2,802	14.5%	-0.5%	2,894	15.0%	-0.5%	3,134	16.2%	0.2%	2,165	11.2%	1.0%	3,003	15.6%	0.3%	1,433	7.4%	0.1%
DEC	19,101	-1.0%	3,616	18.9%	-0.1%	243	1.3%	-2.0%	2,794	14.6%	-0.3%	2,852	14.9%	-1.5%	3,094	16.2%	-1.3%	2,131	11.2%	-1.6%	2,966	15.5%	-1.2%	1,405	7.4%	-2.0%
JAN	19,244	0.7%	3,624	18.8%	0.2%	241	1.3%	-0.8%	2,798	14.5%	0.1%	2,851	14.8%	0.0%	3,124	16.2%	1.0%	2,149	11.2%	0.8%	3,025	15.7%	2.0%	1,432	7.4%	1.9%
FEB	19,275	0.2%	3,633	18.8%	0.2%	242	1.3%	0.4%	2,799	14.5%	0.0%	2,846	14.8%	-0.2%	3,146	16.3%	0.7%	2,147	11.1%	-0.1%	3,016	15.6%	-0.3%	1,446	7.5%	1.0%
MAR	19,275	0.0%	3,638	18.9%	0.1%	242	1.3%	0.0%	2,800	14.5%	0.0%	2,855	14.8%	0.3%	3,137	16.3%	-0.3%	2,131	11.1%	-0.7%	3,016	15.6%	0.0%	1,456	7.6%	0.7%
APR	19,357	0.4%	3,641	18.8%	0.1%	241	1.2%	-0.4%	2,812	14.5%	0.4%	2,819	14.6%	-1.3%	3,161	16.3%	0.8%	2,144	11.1%	0.6%	3,055	15.8%	1.3%	1,484	7.7%	1.9%
MAY	19,335	-0.1%	3,647	18.9%	0.2%	243	1.3%	0.8%	2,791	14.4%	-0.7%	2,835	14.7%	0.6%	3,114	16.1%	-1.5%	2,157	11.2%	0.6%	3,067	15.9%	0.4%	1,481	7.7%	-0.2%
JUN	19,333	0.0%	3,650	18.9%	0.1%	244	1.3%	0.4%	2,779	14.4%	-0.4%	2,843	14.7%	0.3%	3,093	16.0%	-0.7%	2,164	11.2%	0.3%	3,054	15.8%	-0.4%	1,506	7.8%	1.7%
<b>FY AVG</b>	<b>19,258</b>	<b>0.1%</b>	<b>3,629</b>	<b>18.8%</b>	<b>0.3%</b>	<b>244</b>	<b>1.3%</b>	<b>-0.1%</b>	<b>2,801</b>	<b>14.5%</b>	<b>0.0%</b>	<b>2,861</b>	<b>14.9%</b>	<b>-1.3%</b>	<b>3,128</b>	<b>16.2%</b>	<b>-0.4%</b>	<b>2,146</b>	<b>11.1%</b>	<b>0.0%</b>	<b>3,004</b>	<b>15.6%</b>	<b>1.4%</b>	<b>1,444</b>	<b>7.5%</b>	<b>1.1%</b>
<b>2008/2009</b>																										
JUL	19,364	0.2%	3,662	18.9%	0.3%	242	1.2%	-0.8%	2,787	14.4%	0.3%	2,849	14.7%	0.2%	3,042	15.7%	-1.6%	2,178	11.2%	0.6%	3,095	16.0%	1.3%	1,509	7.8%	0.2%
AUG	19,284	-0.4%	3,663	19.0%	0.0%	239	1.2%	-1.2%	2,789	14.5%	0.1%	2,839	14.7%	-0.4%	3,005	15.6%	-1.2%	2,175	11.3%	-0.1%	3,080	16.0%	-0.5%	1,494	7.7%	-1.0%
SEP	19,251	-0.2%	3,667	19.0%	0.1%	236	1.2%	-1.3%	2,792	14.5%	0.1%	2,843	14.8%	0.1%	2,990	15.5%	-0.5%	2,175	11.3%	0.0%	3,068	15.9%	-0.4%	1,480	7.7%	-0.9%
OCT	19,305	0.3%	3,680	19.1%	0.4%	235	1.2%	-0.4%	2,788	14.4%	-0.1%	2,883	14.9%	1.4%	3,022	15.7%	1.1%	2,175	11.3%	0.0%	3,039	15.7%	-0.9%	1,483	7.7%	0.2%
NOV	19,230	-0.4%	3,680	19.1%	0.0%	235	1.2%	0.0%	2,783	14.5%	-0.2%	2,861	14.9%	-0.8%	3,004	15.6%	-0.6%	2,169	11.3%	-0.3%	3,040	15.8%	0.0%	1,458	7.6%	-1.7%
DEC	19,244	0.1%	3,694	19.2%	0.4%	233	1.2%	-0.9%	2,776	14.4%	-0.3%	2,870	14.9%	0.3%	2,976	15.5%	-0.9%	2,146	11.2%	-1.1%	3,082	16.0%	1.4%	1,467	7.6%	0.6%
JAN	19,282	0.2%	3,708	19.2%	0.4%	232	1.2%	-0.4%	2,767	14.4%	-0.3%	2,862	14.8%	-0.3%	2,982	15.5%	0.2%	2,154	11.2%	0.4%	3,120	16.2%	1.2%	1,457	7.6%	-0.7%
FEB	19,259	-0.1%	3,620	18.8%	-2.4%	236	1.2%	1.7%	2,805	14.6%	1.4%	2,843	14.8%	-0.7%	2,981	15.5%	0.0%	2,153	11.2%	0.0%	2,942	15.3%	-5.7%	1,679	8.7%	15.2%
MAR	19,392	0.7%	3,711	19.1%	2.5%	235	1.2%	-0.4%	2,765	14.3%	-1.4%	2,887	14.9%	1.5%	3,024	15.6%	1.4%	2,186	11.3%	1.5%	3,129	16.1%	6.4%	1,455	7.5%	-13.3%
APR	19,446	0.3%	3,722	19.1%	0.3%	236	1.2%	0.4%	2,775	14.3%	0.4%	2,862	14.7%	-0.9%	3,014	15.5%	-0.3%	2,196	11.3%	0.5%	3,147	16.2%	0.6%	1,494	7.7%	2.7%
MAY																										
JUN																										
<b>FY AVG</b>	<b>19,306</b>	<b>0.1%</b>	<b>3,681</b>	<b>19.1%</b>	<b>0.2%</b>	<b>236</b>	<b>1.2%</b>	<b>-0.3%</b>	<b>2,783</b>	<b>14.4%</b>	<b>0.0%</b>	<b>2,860</b>	<b>14.8%</b>	<b>0.1%</b>	<b>3,004</b>	<b>15.6%</b>	<b>-0.3%</b>	<b>2,171</b>	<b>11.2%</b>	<b>0.1%</b>	<b>3,074</b>	<b>15.9%</b>	<b>0.3%</b>	<b>1,498</b>	<b>7.8%</b>	<b>0.1%</b>

\*\*All Primary Offense information is reported one month in arrears.

\*\*\*Excludes Robbery (Prior to September 2000, these offenses only included Theft, Stolen Property and Burglary - now includes All Property except Robbery).

**PROJECTED POPULATION VS. ACTUAL  
JULY 2005  
TO PRESENT**



**Projections Updated January 2008**

**INCARCERATED FELON POPULATION  
PROJECTIONS VS. ACTUAL  
AS OF May 30, 2009**

<b>2007/2008</b>	PROJECTED	ACTUAL	DIFF	% DIFF
JULY	26,450	26,573	-123	-0.5% *
AUGUST	26,579	26,622	-43	-0.2%
SEPTEMBER	26,595	26,772	-177	-0.7%
OCTOBER	26,548	26,829	-281	-1.0%
NOVEMBER	26,544	26,904	-360	-1.3%
DECEMBER	26,590	26,267	323	1.2%
JANUARY	26,782	26,728	54	0.2%
FEBRUARY	26,825	26,850	-25	-0.1%
MARCH	26,830	26,805	25	0.1%
APRIL	26,842	27,054	-212	-0.8%
MAY	26,861	27,204	-343	-1.3%
JUNE	26,849	26,998	-149	-0.6%
<b>FY AVERAGE</b>	26,691	26,801	-109	-0.4%

<b>2008/2009</b>	PROJECTED	ACTUAL	DIFF	% DIFF
JULY	26,906	27,204	-298	-1.1%
AUGUST	26,971	27,204	-233	-0.9%
SEPTEMBER	26,995	27,421	-426	-1.6%
OCTOBER	27,040	27,431	-391	-1.4%
NOVEMBER	26,968	27,507	-539	-2.0%
DECEMBER	26,950	27,228	-278	-1.0%
JANUARY	27,135	27,408	-273	-1.0%
FEBRUARY	27,159	27,669	-510	-1.8%
MARCH	27,171	27,573	-402	-1.5%
APRIL	27,226	27,546	-320	-1.2%
MAY	27,266	27,419	-153	-0.6%
JUNE	27,221			
<b>FY AVERAGE</b>	27,084	27,419	-348	-1.3%

\*These tables compare the accuracy of the projection model by comparing the projected population to the actual population. Months in which the projected population is less than the actual population will be represented with a negative sign.

**NOTE:** Projections were updated January 2008.  
Averages are column averages.

## INCARCERATED FELON POPULATION AS OF May 30, 2009

	Total Felon Population (A+B+C)	Monthly Change	Monthly Percent Change	TDOD Facilities (A)	Percent of Total	TDOD Backup (B)	Percent of Total	Locally Sentenced (C)	Percent of Total	Local Jail Total (B+C)
<b>FY AVG.</b>										
<b>2003/2004</b>	25,635	33	0.1%	19,404	75.7%	2,021	7.9%	4,210	16.4%	6,231
<b>2004/2005</b>	26,035	26	0.1%	19,431	74.6%	2,180	8.4%	4,425	17.0%	6,605
<b>2005/2006</b>	26,323	-8	0.0%	19,406	73.7%	2,293	8.7%	4,624	17.6%	6,917

### 2006-07

JULY	25,918	-405	-1.5%	19,331	74.6%	1,809	7.0%	4,778	18.4%	6,587
AUGUST	25,792	-126	-0.5%	19,377	75.1%	1,772	6.9%	4,643	18.0%	6,415
SEPTEMBER	26,015	223	0.9%	19,490	74.9%	1,685	6.5%	4,840	18.6%	6,525
OCTOBER	25,993	-22	-0.1%	19,432	74.8%	1,725	6.6%	4,836	18.6%	6,561
NOVEMBER	26,084	91	0.4%	19,458	74.6%	1,813	7.0%	4,813	18.5%	6,626
DECEMBER	25,733	-351	-1.3%	19,282	74.9%	1,817	7.1%	4,634	18.0%	6,451
JANUARY	26,006	273	1.1%	19,396	74.6%	1,946	7.5%	4,664	17.9%	6,610
FEBRUARY	26,064	58	0.2%	19,344	74.2%	1,963	7.5%	4,757	18.3%	6,720
MARCH	26,334	270	1.0%	19,445	73.8%	1,993	7.6%	4,896	18.6%	6,889
APRIL	26,297	-37	-0.1%	19,342	73.6%	2,048	7.8%	4,907	18.7%	6,955
MAY	26,413	116	0.4%	19,304	73.1%	2,029	7.7%	5,080	19.2%	7,109
JUNE	26,551	138	0.5%	19,341	72.8%	2,023	7.6%	5,187	19.5%	7,210
<b>FY Average</b>	26,100	19	0.1%	19,379	74.3%	1,885	7.2%	4,836	18.5%	6,722

### 2007/2008

JULY	26,573	22	0.1%	19,354	72.8%	1,974	7.4%	5,245	19.7%	7,219
AUGUST	26,622	49	0.2%	19,319	72.6%	1,967	7.4%	5,336	20.0%	7,303
SEPTEMBER	26,772	150	0.6%	19,391	72.4%	2,073	7.7%	5,308	19.8%	7,381
OCTOBER	26,829	57	0.2%	19,470	72.6%	2,072	7.7%	5,287	19.7%	7,359
NOVEMBER	26,904	75	0.3%	19,432	72.2%	2,069	7.7%	5,403	20.1%	7,472
DECEMBER	26,267	-637	-2.4%	19,248	73.3%	1,910	7.3%	5,109	19.5%	7,019
JANUARY	26,728	461	1.8%	19,429	72.7%	1,903	7.1%	5,396	20.2%	7,299
FEBRUARY	26,850	122	0.5%	19,475	72.5%	1,922	7.2%	5,453	20.3%	7,375
MARCH	26,805	-45	-0.2%	19,454	72.6%	1,969	7.3%	5,382	20.1%	7,351
APRIL	27,054	249	0.9%	19,560	72.3%	2,007	7.4%	5,487	20.3%	7,494
MAY	27,204	150	0.6%	19,509	71.7%	2,235	8.2%	5,460	20.1%	7,695
JUNE	26,998	-206	-0.8%	19,497	72.2%	2,204	8.2%	5,297	19.6%	7,501
<b>FY Average</b>	26,801	37	0.1%	19,428	72.5%	2,025	7.6%	5,347	19.9%	7,372

### 2008/2009

JULY	27,204	206	0.8%	19,530	71.8%	2,239	8.2%	5,435	20.0%	7,674
AUGUST	27,204	0	0.0%	19,427	71.4%	2,274	8.4%	5,503	20.2%	7,777
SEPTEMBER	27,421	217	0.8%	19,410	70.8%	2,446	8.9%	5,565	20.3%	8,011
OCTOBER	27,431	10	0.0%	19,417	70.8%	2,483	9.1%	5,531	20.2%	8,014
NOVEMBER	27,507	76	0.3%	19,369	70.4%	2,669	9.7%	5,469	19.9%	8,138
DECEMBER	27,228	-279	-1.0%	19,368	71.1%	2,577	9.5%	5,283	19.4%	7,860
JANUARY	27,408	180	0.7%	19,431	70.9%	2,705	9.9%	5,272	19.2%	7,977
FEBRUARY	27,669	261	1.0%	19,534	70.6%	2,647	9.6%	5,488	19.8%	8,135
MARCH	27,573	-96	-0.3%	19,539	70.9%	2,606	9.5%	5,428	19.7%	8,034
APRIL	27,546	-27	-0.1%	19,632	71.3%	2,448	8.9%	5,466	19.8%	7,914
MAY	27,419	-127	-0.5%	19,431	70.9%	2,550	9.3%	5,438	19.8%	7,988
JUNE										
<b>FY Average</b>	27,419	38	0.1%	19,463	71.0%	2,513	9.2%	5,443	19.9%	7,957

Population figures on each year summary line are monthly averages. Monthly change and percent change are calculated from the first month of the year to the last month of the year.

**INCARCERATED FELON POPULATION TOTALS AT FISCAL YEAR END (JUNE 30) FY 1996/97 - FY 2007/08**

	TOTAL FELON POP. (A+B+C)	TOTAL CHANGE	PERCENT CHANGE	TDOC FACILITIES (A)	PERCENT OF TOTAL	TDOC BACKUP (B)	PERCENT OF TOTAL	LOCALLY SENTENCED (C)	PERCENT OF TOTAL	LOCAL JAIL TOTAL (B+C)
1996-97	19,606	684	3.6%	14,218	72.5%	1,817	9.3%	3,571	18.2%	5,388
1997-98	21,286	1,680	8.6%	15,640	73.5%	2,103	9.9%	3,543	16.6%	5,646
1998-99	22,287	1,001	4.7%	16,577	74.4%	1,846	8.3%	3,864	17.3%	5,710
1999-00	22,539	252	1.1%	16,824	74.6%	1,957	8.7%	3,758	16.7%	5,715
1900-01	23,062	523	2.3%	17,459	75.7%	1,901	8.2%	3,702	16.1%	5,603
2001-02	24,235	1,173	5.1%	17,715	73.1%	2,505	10.3%	4,015	16.6%	6,520
2002-03	25,469	1,234	5.1%	19,408	76.2%	1,956	7.7%	4,105	16.1%	6,061
2003-04	25,865	396	1.6%	19,408	75.0%	2,110	8.2%	4,347	16.8%	6,457
2004-05	26,209	344	1.3%	19,432	74.1%	2,321	8.9%	4,456	17.0%	6,777
2005-06	26,110	-99	-0.4%	19,429	74.4%	1,874	7.2%	4,807	18.4%	6,681
2006-07	26,551	441	1.7%	19,341	72.8%	2,023	7.6%	5,187	19.5%	7,210
2007-08	26,998	447	1.7%	19,497	72.2%	2,204	8.2%	5,297	19.6%	7,501

**INCARCERATED FELON POPULATIONS AVERAGES FY 1996/97 - FY 2007/08**

	AVG. TOTAL FELON POP. (A+B+C)	ANNUAL CHANGE	PERCENT CHANGE	TDOC FACILITIES (A)	PERCENT OF TOTAL	TDOC BACKUP (B)	PERCENT OF TOTAL	LOCALLY SENTENCED (C)	PERCENT OF TOTAL	LOCAL JAIL TOTAL (B+C)
1996-97	19,163	469	2.5%	13,815	72.1%	1,904	9.9%	3,444	18.0%	5,348
1997-98	20,401	1,238	6.5%	15,269	74.8%	1,617	7.9%	3,515	17.2%	5,132
1998-99	21,632	1,231	6.0%	15,933	73.7%	1,941	9.0%	3,758	17.4%	5,699
1999-00	22,608	976	4.5%	16,764	74.2%	1,927	8.5%	3,917	17.3%	5,844
1900-01	22,625	17	0.1%	17,140	75.8%	1,742	7.7%	3,743	16.5%	5,485
2001-02	23,891	1,266	5.6%	17,611	73.7%	2,143	9.0%	4,137	17.3%	6,280
2002-03	24,913	1,022	4.3%	18,436	74.0%	2,313	9.3%	4,164	16.7%	6,477
2003-04	25,635	722	2.9%	19,404	75.7%	2,021	7.9%	4,210	16.4%	6,231
2004-05	26,036	401	1.6%	19,431	74.6%	2,180	8.4%	4,425	17.0%	6,605
2005-06	26,323	287	1.1%	19,406	73.7%	2,293	8.7%	4,624	17.6%	6,917
2006-07	26,100	-223	-0.8%	19,379	74.2%	1,885	7.2%	4,836	18.5%	6,721
2007-08	26,801	701	2.7%	19,428	72.5%	2,025	7.6%	5,347	20.0%	7,372

**NOTE: FISCAL YEAR AVERAGES**

# LOCAL JAIL POPULATIONS AS OF May 30, 2009

(Source: TDOC's Jail Summary Report)

	Total Jail Pop.	Monthly Change	% Change	Total TDOC Inmates	Local Felons	Federal & Others	Other Convicted Felons	Convicted Misdem.	Total Pre-trial Detainees	% TDOC Felons	% Local Felons	% Federal & Others	% Other Conv. Felons	% Conv. Misdem.	% Pre-trial Detainees
<b>2007/2008</b>															
JULY	25,594	-67	-0.3%	1,974	5,245	834	797	5,310	11,434	8%	20%	3%	3%	21%	45%
AUGUST	26,338	744	2.9%	1,967	5,336	897	930	5,635	11,573	7%	20%	3%	4%	21%	44%
SEPTEMBER	26,419	81	0.3%	2,073	5,308	878	872	5,723	11,565	8%	20%	3%	3%	22%	44%
OCTOBER	25,545	-874	-3.3%	2,072	5,287	939	799	5,230	11,218	8%	21%	4%	3%	20%	44%
NOVEMBER	25,319	-226	-0.9%	2,069	5,403	978	698	5,493	10,678	8%	21%	4%	3%	22%	42%
DECEMBER	23,590	-1,729	-6.8%	1,910	5,109	1008	691	4,418	10,454	8%	22%	4%	3%	19%	44%
JANUARY	24,331	741	3.1%	1,903	5,396	1013	628	5,073	10,318	8%	22%	4%	3%	21%	42%
FEBRUARY	24,409	78	0.3%	1,922	5,453	979	665	5,408	9,982	8%	22%	4%	3%	22%	41%
MARCH	24,945	536	2.2%	1,969	5,382	1072	695	5,155	10,672	8%	22%	4%	3%	21%	43%
APRIL	25,573	628	2.5%	2,007	5,487	1022	684	5,262	11,111	8%	21%	4%	3%	21%	43%
MAY	26,044	471	1.8%	2,235	5,460	1005	693	5,485	11,166	9%	21%	4%	3%	21%	43%
JUNE	26,186	142	0.5%	2,204	5,297	1084	585	5,259	11,757	8%	20%	4%	2%	20%	45%
<b>2007/2008 AVERAGE</b>	25,358			2,025	5,347	976	728	5,288	10,994	8%	21%	4%	3%	21%	43%

	Total Jail Pop.	Monthly Change	% Change	Total TDOC Inmates	Local Felons	Federal & Others	Other Convicted Felons	Convicted Misdem.	Total Pre-trial Detainees	% TDOC Felons	% Local Felons	% Federal & Others	% Other Conv. Felons	% Conv. Misdem.	% Pre-trial Detainees
<b>2008/2009</b>															
JULY	26,310	124	0.5%	2,239	5,435	982	509	5,061	12,084	9%	21%	4%	2%	19%	46%
AUGUST	26,913	603	2.3%	2,274	5,503	947	526	5,331	12,332	8%	20%	4%	2%	20%	46%
SEPTEMBER	26,779	-134	-0.5%	2,446	5,565	931	526	5,109	12,202	9%	21%	3%	2%	19%	46%
OCTOBER	26,536	-243	-0.9%	2,483	5,531	1040	779	5,124	11,579	9%	21%	4%	3%	19%	44%
NOVEMBER	26,219	-317	-1.2%	2,669	5,469	1016	776	4,753	11,536	10%	21%	4%	3%	18%	44%
DECEMBER	24,778	-1,441	-5.5%	2,577	5,283	955	708	4,229	11,026	10%	21%	4%	3%	17%	44%
JANUARY	26,214	1,436	5.8%	2,705	5,272	1021	752	5,092	11,372	10%	20%	4%	3%	19%	43%
FEBRUARY	26,119	-95	-0.4%	2,647	5,488	999	742	5,295	10,948	10%	21%	4%	3%	20%	42%
MARCH	26,441	322	1.2%	2,606	5,428	1016	760	5,203	11,428	10%	21%	4%	3%	20%	43%
APRIL	26,265	-176	-0.7%	2,448	5,466	942	717	5,274	11,418	9%	21%	4%	3%	20%	43%
MAY	26,898	633	2.4%	2,550	5,438	923	724	5,636	11,627	9%	20%	3%	3%	21%	43%
JUNE															
<b>2008/2009 AVERAGE</b>	26,316			2,513	5,443	979	684	5,101	11,596	10%	21%	4%	3%	19%	44%

## FELON ADMISSIONS IN TENNESSEE FISCAL YEAR 2008/2009

May 2009

TOTAL ADMISSIONS	PERCENT CHANGE	NEW COMMITTS	PERCENT OF TOTAL	VIOLATORS RETURNED	PERCENT OF TOTAL	ESCAPEES & OTHERS	PERCENT OF TOTAL
---------------------	-------------------	-----------------	---------------------	-----------------------	---------------------	----------------------	---------------------

**2008/2009**

### TDOC

JULY	982		552	56.2%	413	42.1%	17	1.7%
AUGUST	953	-3.0%	503	52.8%	435	45.6%	15	1.6%
SEPTEMBER	986	3.5%	564	57.2%	414	42.0%	8	0.8%
OCTOBER	937	-5.0%	515	55.0%	415	44.3%	7	0.7%
NOVEMBER	869	-7.3%	522	60.1%	340	39.1%	7	0.8%
DECEMBER	744	-14.4%	417	56.0%	322	43.3%	5	0.7%
JANUARY	916	23.1%	554	60.5%	350	38.2%	12	1.3%
FEBRUARY	857	-6.4%	518	60.4%	331	38.6%	8	0.9%
MARCH	824	-3.9%	465	56.4%	349	42.4%	10	1.2%
APRIL	809	-1.8%	464	57.4%	331	40.9%	14	1.7%
MAY	547	-32.4%	348	63.6%	197	36.0%	2	0.4%
JUNE								
TOTAL	9,424		5,422	57.5%	3,897	41.4%	105	1.1%

**2008/2009**

### LOCALLY SENTENCED

JULY	312		205	65.7%	107	34.3%	0	0.0%
AUGUST	298	-4.5%	210	70.5%	85	28.5%	3	1.0%
SEPTEMBER	304	2.0%	196	64.5%	107	35.2%	1	0.3%
OCTOBER	279	-8.2%	181	64.9%	98	35.1%	0	0.0%
NOVEMBER	264	-5.4%	185	70.1%	78	29.5%	1	0.4%
DECEMBER	251	-4.9%	156	62.2%	94	37.5%	1	0.4%
JANUARY	292	16.3%	208	71.2%	83	28.4%	1	0.3%
FEBRUARY	297	1.7%	190	64.0%	106	35.7%	1	0.3%
MARCH	281	-5.4%	179	63.7%	100	35.6%	2	0.7%
APRIL	277	-1.4%	180	65.0%	94	33.9%	3	1.1%
MAY	246	-11.2%	157	63.8%	89	36.2%	0	0.0%
JUNE								
TOTAL	3,101		2,047	66.0%	1,041	33.6%	13	0.4%

**2008/2009**

### SYSTEM TOTAL

JULY	1,294		757	58.5%	520	40.2%	17	1.3%
AUGUST	1,251	-3.3%	713	57.0%	520	41.6%	18	1.4%
SEPTEMBER	1,290	3.1%	760	58.9%	521	40.4%	9	0.7%
OCTOBER	1,216	-5.7%	696	57.2%	513	42.2%	7	0.6%
NOVEMBER	1,133	-6.8%	707	62.4%	418	36.9%	8	0.7%
DECEMBER	995	-12.2%	573	57.6%	416	41.8%	6	0.6%
JANUARY	1,208	21.4%	762	63.1%	433	35.8%	13	1.1%
FEBRUARY	1,154	-4.5%	708	61.4%	437	37.9%	9	0.8%
MARCH	1,105	-4.2%	644	58.3%	449	40.6%	12	1.1%
APRIL	1,086	-1.7%	644	59.3%	425	39.1%	17	1.6%
MAY	793	-27.0%	505	63.7%	286	36.1%	2	0.3%
JUNE								
TOTAL	12,525		7,469	59.6%	4,938	39.4%	118	0.9%

*Admission statistics are incomplete because all data are not received by TDOC immediately after sentencing.*

*In some cases information is not received until several months after sentencing; therefore, the numbers for any given month may be different from the previous month's report.*

## FELON ADMISSIONS IN TENNESSEE FISCAL YEAR 2007/2008

TOTAL ADMISSIONS	PERCENT CHANGE	NEW COMMITTS	PERCENT OF TOTAL	VIOLATORS RETURNED	PERCENT OF TOTAL	ESCAPEES & OTHERS	PERCENT OF TOTAL
---------------------	-------------------	-----------------	---------------------	-----------------------	---------------------	----------------------	---------------------

### 2007/2008

#### TDOC

JULY	991		556	56.1%	425	42.9%	10	1.0%
AUGUST	975	-1.6%	551	56.5%	415	42.6%	9	0.9%
SEPTEMBER	982	0.7%	558	56.8%	420	42.8%	4	0.4%
OCTOBER	941	-4.2%	516	54.8%	414	44.0%	11	1.2%
NOVEMBER	994	5.6%	570	57.3%	417	42.0%	7	0.7%
DECEMBER	738	-25.8%	441	59.8%	287	38.9%	10	1.4%
JANUARY	937	27.0%	533	56.9%	395	42.2%	9	1.0%
FEBRUARY	944	0.7%	539	57.1%	399	42.3%	6	0.6%
MARCH	883	-6.5%	478	54.1%	395	44.7%	10	1.1%
APRIL	945	7.0%	548	58.0%	383	40.5%	14	1.5%
MAY	958	1.4%	529	55.2%	412	43.0%	17	1.8%
JUNE	890	-7.1%	490	55.1%	385	43.3%	15	1.7%
TOTAL	11,178		6,309	56.4%	4,747	42.5%	122	1.1%

### 2007/2008

#### LOCALLY SENTENCED

JULY	281		170	60.5%	110	39.1%	1	0.4%
AUGUST	302	7.5%	200	66.2%	99	32.8%	3	1.0%
SEPTEMBER	309	2.3%	194	62.8%	112	36.2%	3	1.0%
OCTOBER	349	12.9%	240	68.8%	106	30.4%	3	0.9%
NOVEMBER	334	-4.3%	227	68.0%	106	31.7%	1	0.3%
DECEMBER	204	-38.9%	154	75.5%	49	24.0%	1	0.5%
JANUARY	371	81.9%	254	68.5%	115	31.0%	2	0.5%
FEBRUARY	291	-21.6%	199	68.4%	89	30.6%	3	1.0%
MARCH	289	-0.7%	186	64.4%	103	35.6%	0	0.0%
APRIL	315	9.0%	223	70.8%	91	28.9%	1	0.3%
MAY	324	2.9%	227	70.1%	96	29.6%	1	0.3%
JUNE	245	-24.4%	164	66.9%	80	32.7%	1	0.4%
TOTAL	3,614		2,438	67.5%	1,156	32.0%	20	0.6%

### 2007/2008

#### SYSTEM TOTAL

JULY	1,272		726	57.1%	535	42.1%	11	0.9%
AUGUST	1,277	0.4%	751	58.8%	514	40.3%	12	0.9%
SEPTEMBER	1,291	1.1%	752	58.2%	532	41.2%	7	0.5%
OCTOBER	1,290	-0.1%	756	58.6%	520	40.3%	14	1.1%
NOVEMBER	1,328	2.9%	797	60.0%	523	39.4%	8	0.6%
DECEMBER	942	-29.1%	595	63.2%	336	35.7%	11	1.2%
JANUARY	1,308	38.9%	787	60.2%	510	39.0%	11	0.8%
FEBRUARY	1,235	-5.6%	738	59.8%	488	39.5%	9	0.7%
MARCH	1,172	-5.1%	664	56.7%	498	42.5%	10	0.9%
APRIL	1,260	7.5%	771	61.2%	474	37.6%	15	1.2%
MAY	1,282	1.7%	756	59.0%	508	39.6%	18	1.4%
JUNE	1,135	-11.5%	654	57.6%	465	41.0%	16	1.4%
TOTAL	14,792		8,747	59.1%	5,903	39.9%	142	1.0%

**Admission statistics are incomplete because all data are not received by TDOC immediately after sentencing. In some cases information is not received until several months after sentencing; therefore, the numbers for any given month may be different from the previous month's report.**

**FELON ADMISSIONS IN TENNESSEE  
FISCAL YEARS 1997/98 - 2007/08**

TOTAL ADMISSIONS	PERCENT CHANGE	NEW COMMITS	PERCENT OF TOTAL	VIOLATORS RETURNED	PERCENT OF TOTAL	ESCAPEES & OTHERS	PERCENT OF TOTAL
------------------	----------------	-------------	------------------	--------------------	------------------	-------------------	------------------

TDOC								
1997-98	8,660	16.1%	4,837	55.9%	3,719	42.9%	104	1.2%
1998-99	8,452	-2.4%	4,905	58.0%	3,464	41.0%	83	1.0%
1999-00	8,694	2.9%	5,249	60.4%	3,350	38.5%	95	1.1%
2000-01	9,037	3.9%	5,381	59.5%	3,514	38.9%	142	1.6%
2001-02	9,608	6.3%	5,644	58.7%	3,848	40.0%	116	1.2%
2002-03	9,529	-0.8%	5,658	59.4%	3,769	39.6%	102	1.1%
2003-04	10,262	7.7%	6,086	59.3%	4,047	39.4%	129	1.3%
2004-05	10,417	1.5%	6,027	57.9%	4,275	41.0%	115	1.1%
2005-06	10,913	4.8%	6,299	57.7%	4,492	41.2%	122	1.1%
2006-07	11,208	1.5%	6,343	57.9%	4,733	41.0%	132	1.1%
2007-08	11,178	-0.3%	6,309	56.4%	4,747	42.5%	122	1.1%

LOCALLY SENTENCED								
1997-98	4,941	-3.3%	3,447	69.8%	1,434	29.0%	60	1.2%
1998-99	4,721	-4.5%	3,202	67.8%	1,490	31.6%	29	0.6%
1999-00	4,756	0.7%	3,510	73.8%	1,224	25.7%	22	0.5%
2000-01	4,405	-7.4%	2,982	67.7%	1,388	31.5%	35	0.8%
2001-02	4,022	-8.7%	2,693	67.0%	1,307	32.5%	22	0.5%
2002-03	3,733	-7.2%	2,405	64.4%	1,308	35.0%	20	0.5%
2003-04	3,582	-4.0%	2,350	65.6%	1,214	33.9%	18	0.5%
2004-05	3,759	4.9%	2,413	64.2%	1,327	35.3%	19	0.5%
2005-06	3,638	-3.2%	2,321	64.2%	1,296	35.3%	21	0.5%
2006-07	3,667	4.9%	2,322	63.3%	1,332	36.3%	13	0.4%
2007-08	3,614	-1.4%	2,438	67.5%	1,156	32.0%	20	0.6%

SYSTEM TOTAL								
1997-98	13,601	4.9%	8,284	60.9%	5,153	37.9%	164	1.2%
1998-99	13,173	-3.1%	8,107	61.5%	4,954	37.6%	112	0.9%
1999-00	13,450	2.1%	8,759	65.1%	4,574	34.0%	117	0.9%
2000-01	13,442	-0.1%	8,363	62.2%	4,902	36.5%	177	1.3%
2001-02	13,630	1.4%	8,337	61.2%	5,155	37.8%	138	1.0%
2002-03	13,262	-2.7%	8,063	60.8%	5,077	38.3%	122	0.9%
2003-04	13,844	4.4%	8,436	60.9%	5,261	38.0%	147	1.1%
2004-05	14,176	2.4%	8,440	59.5%	5,602	39.5%	134	0.9%
2005-06	14,551	2.6%	8,620	59.2%	5,788	39.8%	143	1.0%
2006-07	14,875	2.4%	8,665	59.5%	6,065	39.5%	145	0.9%
2007-08	14,792	-0.6%	8,747	59.1%	5,903	39.9%	142	1.0%

## FELON RELEASES IN TENNESSEE FISCAL YEAR 2008/2009

	TOTAL RELEASES	PERCENT CHANGE	PAROLE	PERCENT OF TOTAL	PROBATION COM. COR.	PERCENT OF TOTAL	EXPIRATION & OTHERS	PERCENT OF TOTAL
--	-------------------	-------------------	--------	---------------------	------------------------	---------------------	------------------------	---------------------

### \*TDOC

JULY	500		234	46.8%	74	14.8%	192	38.4%
AUGUST	522	4.4%	227	43.5%	74	14.2%	221	42.3%
SEPTEMBER	532	1.9%	269	50.6%	77	14.5%	186	35.0%
OCTOBER	491	-7.7%	261	53.2%	39	7.9%	191	38.9%
NOVEMBER	511	4.1%	260	50.9%	39	7.6%	212	41.5%
DECEMBER	522	2.2%	284	54.4%	50	9.6%	188	36.0%
JANUARY	448	-14.2%	213	47.5%	36	8.0%	199	44.4%
FEBRUARY	501	11.8%	268	53.5%	39	7.8%	194	38.7%
*MARCH	600	19.8%	332	55.3%	54	9.0%	214	35.7%
APRIL	524	-12.7%	291	55.5%	48	9.2%	185	35.3%
MAY	577	10.1%	311	53.9%	75	13.0%	191	33.1%
JUNE								
TOTAL	5,728		2,950	51.5%	605	10.6%	2,173	37.9%

### TDOC BACKUP

JULY	511		61	11.9%	304	59.5%	146	28.6%
AUGUST	539	5.5%	47	8.7%	352	65.3%	140	26.0%
SEPTEMBER	488	-9.5%	55	11.3%	290	59.4%	143	29.3%
OCTOBER	436	-10.7%	47	10.8%	268	61.5%	121	27.8%
NOVEMBER	406	-6.9%	56	13.8%	276	68.0%	74	18.2%
DECEMBER	560	37.9%	63	11.3%	290	51.8%	207	37.0%
JANUARY	432	-22.9%	53	12.3%	264	61.1%	115	26.6%
FEBRUARY	468	8.3%	74	15.8%	250	53.4%	144	30.8%
MARCH	489	4.5%	65	13.3%	278	56.9%	146	29.9%
APRIL	474	-3.1%	75	15.8%	267	56.3%	132	27.8%
MAY	442	-6.8%	84	19.0%	239	54.1%	119	26.9%
JUNE								
TOTAL	5,245		680	13.0%	3,078	58.7%	1,487	28.4%

### LOCALLY SENTENCED

JULY	305		42	13.8%	149	48.9%	114	37.4%
AUGUST	285	-6.6%	32	11.2%	143	50.2%	110	38.6%
SEPTEMBER	311	9.1%	31	10.0%	153	49.2%	127	40.8%
OCTOBER	285	-8.4%	28	9.8%	132	46.3%	125	43.9%
NOVEMBER	231	-18.9%	39	16.9%	128	55.4%	64	27.7%
DECEMBER	376	62.8%	37	9.8%	153	40.7%	186	49.5%
JANUARY	257	-31.6%	24	9.3%	124	48.2%	109	42.4%
FEBRUARY	268	4.3%	24	9.0%	123	45.9%	121	45.1%
MARCH	282	5.2%	36	12.8%	158	56.0%	88	31.2%
APRIL	260	-7.8%	25	9.6%	119	45.8%	116	44.6%
MAY	295	13.5%	43	14.6%	141	47.8%	111	37.6%
JUNE								
TOTAL	3,155		361	11.4%	1,523	48.3%	1,271	40.3%

### SYSTEM TOTAL

JULY	1,316		337	25.6%	527	40.0%	452	34.3%
AUGUST	1,346	2.3%	306	22.7%	569	42.3%	471	35.0%
SEPTEMBER	1,331	-1.1%	355	26.7%	520	39.1%	456	34.3%
OCTOBER	1,212	-8.9%	336	27.7%	439	36.2%	437	36.1%
NOVEMBER	1,148	-5.3%	355	30.9%	443	38.6%	350	30.5%
DECEMBER	1,458	27.0%	384	26.3%	493	33.8%	581	39.8%
JANUARY	1,137	-22.0%	290	25.5%	424	37.3%	423	37.2%
FEBRUARY	1,237	8.8%	366	29.6%	412	33.3%	459	37.1%
MARCH	1,371	10.8%	433	31.6%	490	35.7%	448	32.7%
APRIL	1,258	-8.2%	391	31.1%	434	34.5%	433	34.4%
MAY	1,314	4.5%	438	33.3%	455	34.6%	421	32.0%
JUNE								
TOTAL	14,128		3,991	28.2%	5,206	36.8%	4,931	34.9%

**\*Beginning with the March 2008 update, the TDOC Release numbers in this report include offenders released from TDOC after revocation of a split confinement suspension of sentence. Only figures back to FY 06/07 were adjusted. Release statistics are incomplete because all data are not received by TDOC immediately after inmates are released. Therefore, the numbers for any given month may be different from the previous month's report.**

## FELON RELEASES IN TENNESSEE FISCAL YEAR 2007/2008

	TOTAL RELEASES	PERCENT CHANGE	PAROLE	PERCENT OF TOTAL	PROBATION COM. COR.	PERCENT OF TOTAL	EXPIRATION & OTHERS	PERCENT OF TOTAL
<b>*TDOC</b>								
JULY	621		314	50.6%	68	11.0%	239	38.5%
AUGUST	671	8.1%	372	55.4%	65	9.7%	234	34.9%
SEPTEMBER	484	-27.9%	233	48.1%	69	14.3%	182	37.6%
OCTOBER	543	12.2%	258	47.5%	99	18.2%	186	34.3%
NOVEMBER	555	2.2%	261	47.0%	76	13.7%	218	39.3%
DECEMBER	642	15.7%	353	55.0%	68	10.6%	221	34.4%
JANUARY	518	-19.3%	241	46.5%	84	16.2%	193	37.3%
FEBRUARY	448	-13.5%	197	44.0%	66	14.7%	185	41.3%
*MARCH	504	12.5%	235	46.6%	58	11.5%	211	41.9%
APRIL	547	8.5%	270	49.4%	59	10.8%	218	39.9%
MAY	574	4.9%	265	46.2%	100	17.4%	209	36.4%
JUNE	529	-7.8%	255	48.2%	63	11.9%	211	39.9%
TOTAL	6,636		3,254	49.0%	875	13.2%	2,507	37.8%

	TOTAL RELEASES	PERCENT CHANGE	PAROLE	PERCENT OF TOTAL	PROBATION COM. COR.	PERCENT OF TOTAL	EXPIRATION & OTHERS	PERCENT OF TOTAL
<b>TDOC BACKUP</b>								
JULY	514		51	9.9%	337	65.6%	126	24.5%
AUGUST	552	7.4%	53	9.6%	351	63.6%	148	26.8%
SEPTEMBER	454	-17.8%	43	9.5%	304	67.0%	107	23.6%
OCTOBER	553	21.8%	58	10.5%	373	67.5%	122	22.1%
NOVEMBER	528	-4.5%	63	11.9%	339	64.2%	126	23.9%
DECEMBER	521	-1.3%	83	15.9%	315	60.5%	123	23.6%
JANUARY	508	-2.5%	51	10.0%	333	65.6%	124	24.4%
FEBRUARY	488	-3.9%	44	9.0%	282	57.8%	162	33.2%
MARCH	472	-3.3%	43	9.1%	301	63.8%	128	27.1%
APRIL	468	-0.8%	47	10.0%	288	61.5%	133	28.4%
MAY	563	20.3%	54	9.6%	378	67.1%	131	23.3%
JUNE	518	-8.0%	59	11.4%	315	60.8%	144	27.8%
TOTAL	6,139		649	10.6%	3,916	63.8%	1,574	25.6%

	TOTAL RELEASES	PERCENT CHANGE	PAROLE	PERCENT OF TOTAL	PROBATION COM. COR.	PERCENT OF TOTAL	EXPIRATION & OTHERS	PERCENT OF TOTAL
<b>LOCALLY SENTENCED</b>								
JULY	268		22	8.2%	146	54.5%	100	37.3%
AUGUST	283	5.6%	32	11.3%	130	45.9%	121	42.8%
SEPTEMBER	251	-11.3%	22	8.8%	113	45.0%	116	46.2%
OCTOBER	307	22.3%	45	14.7%	147	47.9%	115	37.5%
NOVEMBER	286	-6.8%	25	8.7%	133	46.5%	128	44.8%
DECEMBER	316	10.5%	41	13.0%	146	46.2%	129	40.8%
JANUARY	280	-11.4%	28	10.0%	139	49.6%	113	40.4%
FEBRUARY	324	15.7%	27	8.3%	169	52.2%	128	39.5%
MARCH	298	-8.0%	31	10.4%	124	41.6%	143	48.0%
APRIL	284	-4.7%	33	11.6%	147	51.8%	104	36.6%
MAY	321	13.0%	50	15.6%	166	51.7%	105	32.7%
JUNE	286	-10.9%	39	13.6%	137	47.9%	110	38.5%
TOTAL	3,504		395	11.3%	1,697	48.4%	1,412	40.3%

	TOTAL RELEASES	PERCENT CHANGE	PAROLE	PERCENT OF TOTAL	PROBATION COM. COR.	PERCENT OF TOTAL	EXPIRATION & OTHERS	PERCENT OF TOTAL
<b>SYSTEM TOTAL</b>								
JULY	1,403		387	27.6%	551	39.3%	465	33.1%
AUGUST	1,506	7.3%	457	30.3%	546	36.3%	503	33.4%
SEPTEMBER	1,189	-21.0%	298	25.1%	486	40.9%	405	34.1%
OCTOBER	1,403	18.0%	361	25.7%	619	44.1%	423	30.1%
NOVEMBER	1,369	-2.4%	349	25.5%	548	40.0%	472	34.5%
DECEMBER	1,479	8.0%	477	32.3%	529	35.8%	473	32.0%
JANUARY	1,306	-11.7%	320	24.5%	556	42.6%	430	32.9%
FEBRUARY	1,260	-3.5%	268	21.3%	517	41.0%	475	37.7%
MARCH	1,274	1.1%	309	24.3%	483	37.9%	482	37.8%
APRIL	1,299	2.0%	350	26.9%	494	38.0%	455	35.0%
MAY	1,458	12.2%	369	25.3%	644	44.2%	445	30.5%
JUNE	1,333	-8.6%	353	26.5%	515	38.6%	465	34.9%
TOTAL	16,279		4,298	26.4%	6,488	39.9%	5,493	33.7%

**\*Beginning with the March 2008 update, the TDOC Release numbers in this report include offenders released from TDOC after revocation of a split confinement suspension of sentence. Only figures back to FY 06/07 were adjusted.**

Release statistics are incomplete because all data are not received by TDOC immediately after inmates are released.

Therefore, the numbers for any given month may be different from the previous month's report.

## FELON RELEASES IN TENNESSEE FISCAL YEARS 1997/98 - 2007/08

	TOTAL RELEASES	PERCENT CHANGE	PAROLE	PERCENT OF TOTAL	PROBATION COM. COR.	PERCENT OF TOTAL	EXPIRATION & OTHERS	PERCENT OF TOTAL
--	----------------	----------------	--------	------------------	---------------------	------------------	---------------------	------------------

### TDOC

1997-98	4,216	0.0%	2,295	65.7%	563	8.6%	1,358	25.7%
1998-99	4,241	0.6%	2,270	53.5%	444	10.5%	1,527	36.0%
1999-00	4,691	10.6%	2,548	54.3%	506	10.8%	1,637	34.9%
2000-01	5,032	7.3%	2,727	54.2%	568	11.3%	1,737	34.5%
2001-02	4,553	-9.5%	2,224	48.8%	514	11.3%	1,815	39.9%
2002-03	4,842	6.3%	2,262	46.7%	603	12.5%	1,977	40.8%
2003-04	5,493	13.4%	2,552	46.5%	698	12.7%	2,243	40.8%
2004-05	5,804	5.7%	2,767	47.7%	709	12.2%	2,328	40.1%
2005-06	6,146	5.9%	3,152	51.3%	756	12.3%	2,238	36.4%
2006-07	6,882	12.0%	3,453	50.2%	892	13.0%	2,537	36.9%
2007-08	6,636	-3.6%	3,254	49.0%	875	13.2%	2,507	37.8%

### TDOC BACKUP

1997-98	3,873	39.4%	479	21.0%	2,582	58.7%	812	20.3%
1998-99	4,044	4.4%	484	12.0%	2,516	62.2%	1,044	25.8%
1999-00	3,933	-2.7%	546	13.9%	2,315	58.9%	1,072	27.3%
2000-01	3,917	-0.4%	486	12.4%	2,402	61.3%	1,029	26.3%
2001-02	4,212	7.5%	392	9.3%	2,677	63.6%	1,143	27.1%
2002-03	4,539	7.8%	423	9.3%	2,884	63.5%	1,232	27.1%
2003-04	4,788	5.5%	409	8.5%	3,150	65.8%	1,229	25.7%
2004-05	5,235	9.3%	485	9.3%	3,349	64.0%	1,401	26.8%
2005-06	5,913	13.0%	577	9.8%	3,721	62.9%	1,615	27.3%
2006-07	5,874	-0.7%	594	10.1%	3,804	64.8%	1,476	25.1%
2007-08	6,139	4.5%	649	10.6%	3,916	63.8%	1,574	25.6%

### LOCALLY SENTENCED

1997-98	4,535	12.2%	591	17.3%	2,412	49.5%	1,532	33.2%
1998-99	4,546	0.2%	558	12.3%	2,326	51.2%	1,662	36.6%
1999-00	4,365	-4.0%	610	14.0%	2,076	47.6%	1,679	38.5%
2000-01	3,998	-8.4%	550	13.8%	1,983	49.6%	1,465	36.6%
2001-02	3,810	-4.7%	387	10.2%	1,909	50.1%	1,514	39.7%
2002-03	3,509	-7.9%	266	7.6%	1,760	50.2%	1,483	42.3%
2003-04	3,311	-5.6%	247	7.5%	1,601	48.4%	1,463	44.2%
2004-05	3,337	0.8%	272	8.2%	1,681	50.4%	1,384	41.5%
2005-06	3,544	6.2%	278	7.8%	1,826	51.5%	1,440	40.6%
2006-07	3,409	-3.8%	338	9.9%	1,679	49.3%	1,392	40.8%
2007-08	3,504	2.8%	395	11.3%	1,697	48.4%	1,412	40.3%

### SYSTEM TOTAL

1997-98	12,624	18.7%	3,365	31.7%	5,557	40.1%	3,702	28.1%
1998-99	12,831	1.6%	3,312	25.8%	5,286	41.2%	4,233	33.0%
1999-00	12,989	1.2%	3,704	28.5%	4,897	37.7%	4,388	33.8%
2000-01	12,947	-0.3%	3,763	29.1%	4,953	38.3%	4,231	32.7%
2001-02	12,575	-2.9%	3,003	23.9%	5,100	40.6%	4,472	35.6%
2002-03	12,890	2.5%	2,951	22.9%	5,247	40.7%	4,692	36.4%
2003-04	13,592	5.4%	3,208	23.6%	5,449	40.1%	4,935	36.3%
2004-05	14,376	5.8%	3,524	24.5%	5,739	39.9%	5,113	35.6%
2005-06	15,603	8.5%	4,007	25.7%	6,303	40.4%	5,293	33.9%
2006-07	16,165	3.6%	4,385	27.1%	6,375	39.4%	5,405	33.4%
2007-08	16,279	0.7%	4,298	26.4%	6,488	39.9%	5,493	33.7%

**PROJECTED FELON ADMISSIONS VS. ACTUAL**  
**May 2009**  
**(Projections Updated January 2008)**

FY 2007/2008	NEW COMMITMENTS AND OTHERS				PAROLE/PROBATION/COM. CORR. VIOLATORS				TOTAL ADMISSIONS			
	PROJECTED	ACTUAL	DIFF	% DIFF	PROJECTED	ACTUAL	DIFF	% DIFF	PROJECTED	ACTUAL	DIFF	% DIFF
	Jul-07	732	737	-5	-0.7%	516	535	-19	-3.6%	1,248	1,272	-24
Aug-07	702	763	-61	-8.0%	508	514	-6	-1.2%	1,210	1,277	-67	-5.2%
Sep-07	758	759	-1	-0.1%	498	532	-34	-6.4%	1,256	1,291	-35	-2.7%
Oct-07	706	770	-64	-8.3%	515	520	-5	-1.0%	1,221	1,290	-69	-5.3%
Nov-07	697	805	-108	-13.4%	469	523	-54	-10.3%	1,166	1,328	-162	-12.2%
Dec-07	671	606	65	10.7%	436	336	100	29.8%	1,107	942	165	17.5%
Jan-08	727	798	-71	-8.9%	490	510	-20	-3.9%	1,217	1,308	-91	-7.0%
Feb-08	705	747	-42	-5.6%	491	488	3	0.6%	1,196	1,235	-39	-3.2%
Mar-08	668	674	-6	-0.9%	513	498	15	3.0%	1,181	1,172	9	0.8%
Apr-08	643	786	-143	-18.2%	506	474	32	6.8%	1,149	1,260	-111	-8.8%
May-08	701	774	-73	-9.4%	507	508	-1	-0.2%	1,208	1,282	-74	-5.8%
Jun-08	664	670	-6	-0.9%	510	465	45	9.7%	1,174	1,135	39	3.4%
FY Total	8,374	8,889	-515	-5.8%	5,959	5,903	56	0.9%	14,333	14,792	-459	-3.1%
FY Avg.	697.8	740.8	-42.9	-5.3%	496.6	491.9	4.7	1.9%	1194.4	1232.7	-38.3	-2.5%

FY 2008/2009	NEW COMMITMENTS AND OTHERS				PAROLE/PROBATION/COM. CORR. VIOLATORS				TOTAL ADMISSIONS			
	PROJECTED	ACTUAL	DIFF	% DIFF	PROJECTED	ACTUAL	DIFF	% DIFF	PROJECTED	ACTUAL	DIFF	% DIFF
	Jul-08	691	774	-83	-10.7%	497	520	-23	-4.4%	1,188	1,294	-106
Aug-08	663	731	-68	-9.3%	512	520	-8	-1.5%	1,175	1,251	-76	-6.1%
Sep-08	665	769	-104	-13.5%	504	521	-17	-3.3%	1,169	1,290	-121	-9.4%
Oct-08	650	703	-53	-7.5%	521	513	8	1.6%	1,171	1,216	-45	-3.7%
Nov-08	636	715	-79	-11.0%	515	418	97	23.2%	1,151	1,133	18	1.6%
Dec-08	732	579	153	26.4%	493	416	77	18.5%	1,225	995	230	23.1%
Jan-09	671	775	-104	-13.4%	541	433	108	24.9%	1,212	1,208	4	0.3%
Feb-09	705	717	-12	-1.7%	493	437	56	12.8%	1,198	1,154	44	3.8%
Mar-09	655	656	-1	-0.2%	494	449	45	10.0%	1,149	1,105	44	4.0%
Apr-09	623	661	-38	-5.7%	513	425	88	20.7%	1,136	1,086	50	4.6%
May-09	636	507	129	25.4%	523	286	237	82.9%	1,159	793	366	46.2%
Jun-09	628				522				1,150			
FY Total	7,955	7,587	N/A*	N/A*	6,128	4,938	N/A*	N/A*	14,083	12,525	N/A*	N/A*
FY Avg.	662.9	689.7	-23.6	-1.9%	510.7	448.9	60.7	16.9%	1,174	1,139	37	5.1%

These tables compare the accuracy of the projection model by comparing projected admissions to actual admissions. Months in which the projected admissions are less than actual admissions will be represented with a negative sign.

**NOTE: The last three months of actual numbers may change due to the time delay in data entry. It takes approximately 3 to 4 months for all data in any given month to accumulate or "top out".**

## PROJECTED FELON RELEASES VS. ACTUAL

May 2009

(Projections Updated January 2008)

	PAROLEES				PROBATIONERS & COMMUNITY CORRECTIONS				DISCHARGES & OTHERS				TOTAL RELEASES			
	PROJECTED	ACTUAL	DIFF	% DIFF	PROJECTED	ACTUAL	DIFF	% DIFF	PROJECTED	ACTUAL	DIFF	% DIFF	PROJECTED	ACTUAL	DIFF	% DIFF
<b>2007/2008</b>																
Jul-07	357	387	-30	-7.8%	525	551	-26	-4.7%	458	465	-7	-1.5%	1,340	1,403	-63	-4.5%
Aug-07	373	457	-84	-18.4%	465	546	-81	-14.8%	442	503	-61	-12.1%	1,280	1,506	-226	-15.0%
Sep-07	403	298	105	35.2%	576	486	90	18.5%	423	405	18	4.4%	1,402	1,189	213	17.9%
Oct-07	401	361	40	11.1%	522	619	-97	-15.7%	427	423	4	0.9%	1,350	1,403	-53	-3.8%
Nov-07	379	349	30	8.6%	508	548	-40	-7.3%	487	472	15	3.2%	1,374	1,369	5	0.4%
Dec-07	409	477	-68	-14.3%	487	529	-42	-7.9%	439	473	-34	-7.2%	1,335	1,479	-144	-9.7%
Jan-08	416	320	96	30.0%	505	556	-51	-9.2%	436	430	6	1.4%	1,357	1,306	51	3.9%
Feb-08	350	268	82	30.6%	522	517	5	1.0%	458	475	-17	-3.6%	1,330	1,260	70	5.6%
Mar-08	383	309	74	23.9%	518	483	35	7.2%	478	482	-4	-0.8%	1,379	1,274	105	8.2%
Apr-08	411	350	61	17.4%	482	494	-12	-2.4%	442	455	-13	-2.9%	1,335	1,299	36	2.8%
May-08	319	369	-50	-13.6%	497	644	-147	-22.8%	457	445	12	2.7%	1,273	1,458	-185	-12.7%
Jun-08	406	353	53	15.0%	496	515	-19	-3.7%	416	465	-49	-10.5%	1,318	1,333	-15	-1.1%
FY Total	4,607	4,298	309	7.2%	6,103	6,488	-385	-5.9%	5,363	5,493	-130	-2.4%	16,073	16,279	-206	-1.3%
FY Avg.	383.9	358.2	25.8	9.8%	508.6	540.7	-32.1	-5.2%	446.9	457.8	-10.8	-2.2%	1,339.4	1,357	-17.2	-0.7%

	PAROLEES				PROBATIONERS & COMMUNITY CORRECTIONS				DISCHARGES & OTHERS				TOTAL RELEASES			
	PROJECTED	ACTUAL	DIFF	% DIFF	PROJECTED	ACTUAL	DIFF	% DIFF	PROJECTED	ACTUAL	DIFF	% DIFF	PROJECTED	ACTUAL	DIFF	% DIFF
<b>2008/2009</b>																
Jul-08	364	337	27	8.0%	517	527	-10	-1.9%	427	452	-25	-5.5%	1,308	1,316	-8	-0.6%
Aug-08	389	306	83	27.1%	530	569	-39	-6.9%	430	471	-41	-8.7%	1,349	1,346	3	0.2%
Sep-08	385	355	30	8.5%	485	520	-35	-6.7%	485	456	29	6.4%	1,355	1,331	24	1.8%
Oct-08	362	336	26	7.7%	516	439	77	17.5%	456	437	19	4.3%	1,334	1,212	122	10.1%
Nov-08	367	355	12	3.4%	563	443	120	27.1%	463	350	113	32.3%	1,393	1,148	245	21.3%
Dec-08	390	384	6	1.6%	486	493	-7	-1.4%	486	581	-95	-16.4%	1,362	1,458	-96	-6.6%
Jan-09	356	290	66	22.8%	499	424	75	17.7%	476	423	53	12.5%	1,331	1,137	194	17.1%
Feb-09	349	366	-17	-4.6%	503	412	91	22.1%	451	459	-8	-1.7%	1,303	1,237	66	5.3%
Mar-09	380	433	-53	-12.2%	518	490	28	5.7%	473	448	25	5.6%	1,371	1,371	0	0.0%
Apr-09	407	391	16	4.1%	521	434	87	20.0%	441	433	8	1.8%	1,369	1,258	111	8.8%
May-09	397	438	-41	-9.4%	490	455	35	7.7%	460	421	39	9.3%	1,347	1,314	33	2.5%
Jun-09	406				491				451				1,348			
FY Total	4,552	3,991	N/A*	N/A*	6,119	5,206	N/A*	N/A*	5,499	4,931	N/A*	N/A*	16,170	14,128	N/A*	N/A*
FY Avg.	379.3	362.8	14.1	5.2%	509.9	473.3	38.4	9.2%	458.3	448.3	10.6	3.6%	1,347.5	1,284	63.1	5.5%

These tables compare the accuracy of the projection model by comparing projected releases to actual releases. Months in which the projected releases were less than actual releases will be represented with a negative sign.

**NOTE: The last three months of actual numbers may change due to the time delay in data entry. It takes approximately 3 to 4 months for all data in any given month to accumulate or "top out".**

**COMMUNITY SERVICES POPULATION  
as of May 2009**

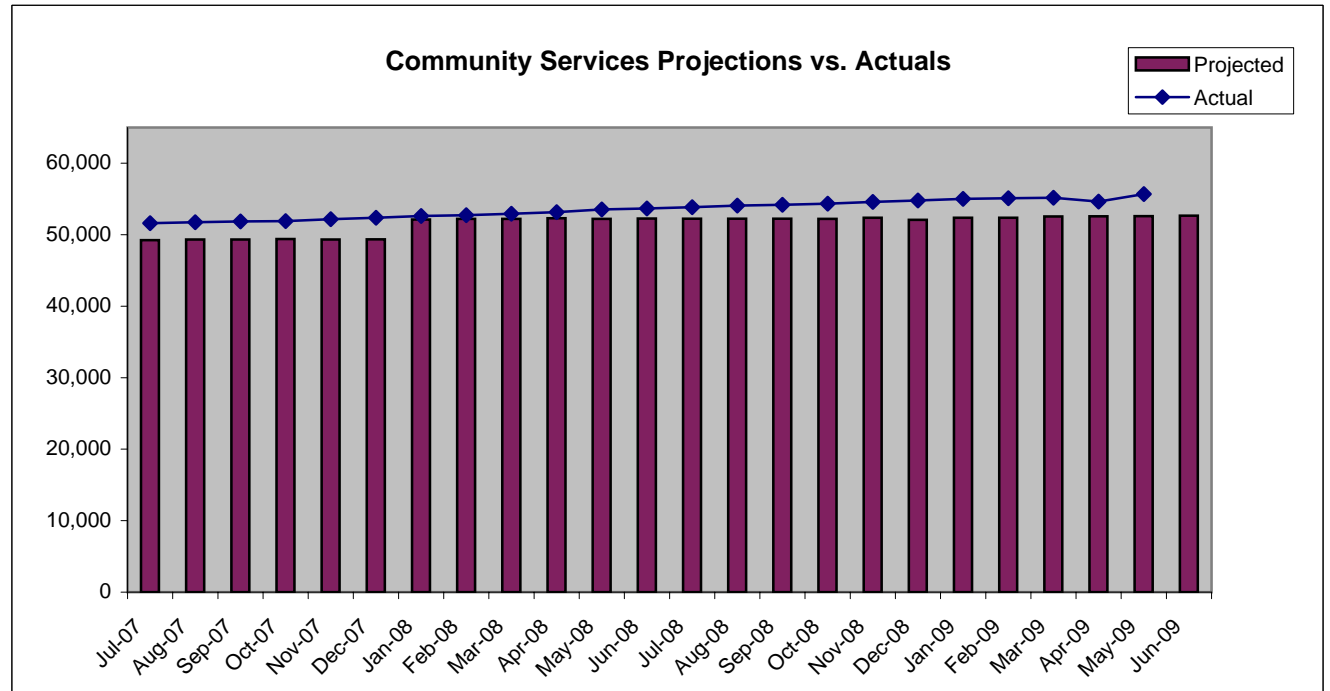
	Community Services Total	Monthly Percent Change	Regular Probation	Percent of Total	Intensive Probation	Percent of Total	Community Corrections	Percent of Total
<b>FY AVERAGE</b>								
2002/2003	42,043	0.2%	35,346	84.1%	982	2.3%	5,715	13.6%
2003/2004	43,417	0.4%	36,582	84.3%	1,010	2.3%	5,825	13.4%
2004/2005	46,140	0.8%	39,173	84.9%	1,010	2.2%	5,957	12.9%
2005/2006	47,529	0.2%	40,308	84.8%	988	2.1%	6,234	13.1%
2006/2007	51,047	0.0%	43,605	85.4%	931	1.8%	6,511	12.8%
<b>2007/2008</b>								
July	52,521	0.3%	44,985	85.7%	915	1.7%	6,621	12.6%
August	52,636	0.2%	45,180	85.8%	891	1.7%	6,565	12.5%
September	52,785	0.3%	45,244	85.7%	928	1.8%	6,613	12.5%
October	52,861	0.1%	45,232	85.6%	956	1.8%	6,673	12.6%
November	53,158	0.6%	45,456	85.5%	990	1.9%	6,712	12.6%
December	53,386	0.4%	45,652	85.5%	999	1.9%	6,735	12.6%
January	53,660	0.5%	45,864	85.5%	1,029	1.9%	6,767	12.6%
February	53,731	0.1%	45,957	85.5%	1,006	1.9%	6,768	12.6%
March	53,950	0.4%	46,080	85.4%	1,012	1.9%	6,858	12.7%
April	54,147	0.4%	46,318	85.5%	993	1.8%	6,836	12.6%
May	54,517	0.7%	46,685	85.6%	985	1.8%	6,847	12.6%
June	54,677	0.3%	46,853	85.7%	997	1.8%	6,827	12.5%
<b>FY Average</b>	<b>53,502</b>	<b>0.4%</b>	<b>45,792</b>	<b>85.6%</b>	<b>975</b>	<b>1.8%</b>	<b>6,735</b>	<b>12.6%</b>

	Community Services Total	Monthly Percent Change	Regular Probation	Percent of Total	Intensive Probation	Percent of Total	Community Corrections	Percent of Total
<b>2008/2009</b>								
July	54,827	0.3%	47,031	85.8%	983	1.8%	6,813	12.4%
August	55,079	0.5%	47,221	85.7%	1,006	1.8%	6,852	12.4%
September	55,222	0.3%	47,320	85.7%	1,028	1.9%	6,874	12.4%
October	55,315	0.2%	47,504	85.9%	972	1.8%	6,839	12.4%
November	55,570	0.5%	47,716	85.9%	983	1.8%	6,871	12.4%
December	55,836	0.5%	47,933	85.8%	1,007	1.8%	6,896	12.4%
January	56,022	0.3%	48,085	85.8%	1,007	1.8%	6,930	12.4%
February	56,080	0.1%	48,218	86.0%	975	1.7%	6,887	12.3%
March	56,097	0.0%	48,342	86.2%	918	1.6%	6,837	12.2%
April	56,508	0.7%	48,633	86.1%	931	1.6%	6,944	12.3%
May	56,618	0.2%	48,739	86.1%	928	1.6%	6,951	12.3%
June								
<b>FY Average</b>	<b>55,743</b>	<b>0.3%</b>	<b>47,886</b>	<b>85.9%</b>	<b>976</b>	<b>1.8%</b>	<b>6,881</b>	<b>12.3%</b>

Population figures on each year-end summary line are monthly averages. Percent change is calculated from the first month of the year to the last month of the year.

## COMMUNITY SERVICES PROJECTIONS VS. ACTUAL May 2009

	Projected	Actual	DIFF	% DIFF
Jun-06	47,477	48,159	-682	-1.4%
Jul-06	47,584	48,405	-821	-1.7%
Aug-06	47,727	48,719	-992	-2.0%
Sep-06	47,892	49,134	-1,242	-2.5%
Oct-06	47,987	49,520	-1,533	-3.1%
Nov-06	48,088	49,983	-1,895	-3.8%
Dec-06	48,162	50,024	-1,862	-3.7%
Jan-07	49,163	50,390	-1,227	-2.4%
Feb-07	49,208	50,675	-1,467	-2.9%
Mar-07	49,177	50,814	-1,637	-3.2%
Apr-07	49,219	51,059	-1,840	-3.6%
May-07	49,223	51,228	-2,005	-3.9%
Jun-07	49,232	51,441	-2,209	-4.3%
Jul-07	49,241	51,606	-2,365	-4.6%
Aug-07	49,322	51,745	-2,423	-4.7%
Sep-07	49,325	51,857	-2,532	-4.9%
Oct-07	49,403	51,905	-2,502	-4.8%
Nov-07	49,321	52,168	-2,847	-5.5%
Dec-07	49,360	52,387	-3,027	-5.8%
Jan-08	52,135	52,631	-496	-0.9%
Feb-08	52,221	52,725	-504	-1.0%
Mar-08	52,224	52,938	-714	-1.3%
Apr-08	52,306	53,154	-848	-1.6%
May-08	52,219	53,532	-1,313	-2.5%
Jun-08	52,260	53,680	-1,420	-2.6%
Jul-08	52,238	53,844	-1,606	-3.0%
Aug-08	52,249	54,073	-1,824	-3.4%
Sep-08	52,245	54,194	-1,949	-3.6%
Oct-08	52,221	54,343	-2,122	-3.9%
Nov-08	52,379	54,587	-2,208	-4.0%
Dec-08	52,086	54,791	-2,705	-4.9%
Jan-09	52,378	55,015	-2,637	-4.8%
Feb-09	52,384	55,105	-2,721	-4.9%
Mar-09	52,545	55,179	-2,634	-4.8%
Apr-09	52,582	54,646	-2,064	-3.8%
May-09	52,599	55,690	-3,091	-5.6%
Jun-09	52,656			



**\*NOTE:** This chart *ONLY* includes projected population totals for Community Corrections and Regular Probation.

**COMMUNITY SERVICES POPULATION FY END (JUNE 30) FY 1996/97 - FY 2007/08**

	TOTAL COM.SRV.POP	TOTAL CHANGE	REGULAR PROBATION	PERCENT OF TOTAL	INTENSIVE PROBATION	PERCENT OF TOTAL	COMM. CORR.	PERCENT OF TOTAL
1996-97	32,051	0.0%	26,333	82.2%	1,786	5.6%	3,932	12.3%
1997-98	34,076	6.3%	28,432	83.4%	1,788	5.2%	3,856	11.3%
1998-99	36,748	7.8%	30,804	83.8%	1,644	4.5%	4,300	11.7%
1999-00	36,533	-0.6%	30,160	82.6%	1,657	4.5%	4,716	12.9%
2000-01	38,075	4.2%	31,458	82.6%	1,751	4.6%	4,866	12.8%
2001-02	41,652	9.4%	35,097	84.3%	975	2.3%	5,580	13.4%
2002-03	42,388	1.8%	35,636	84.1%	975	2.3%	5,777	13.6%
2003-04	44,476	4.9%	37,617	84.6%	1,067	2.4%	5,792	13.0%
2004-05	48,984	10.1%	41,950	85.6%	965	2.0%	6,069	12.4%
2005-06	49,126	0.3%	41,763	85.0%	967	2.0%	6,396	13.0%
2006-07	52,345	6.6%	44,837	85.7%	904	1.7%	6,604	12.6%
2007-08	54,677	4.5%	46,853	85.7%	997	1.8%	6,827	12.5%

**COMMUNITY SERVICES POPULATION AVERAGES FY 1996/97 - FY 2007/08**

	AVG. TOTAL COM.SRV.POP	ANNUAL CHANGE	REGULAR PROBATION	PERCENT OF TOTAL	INTENSIVE PROBATION	PERCENT OF TOTAL	COMM. CORR.	PERCENT OF TOTAL
1996-97	31,361	0.0%	25,843	82.4%	1,819	5.8%	3,699	11.8%
1997-98	33,007	5.2%	27,365	82.9%	1,772	5.4%	3,870	11.7%
1998-99	34,837	5.5%	29,016	83.3%	1,757	5.0%	4,064	11.7%
1999-00	35,772	2.7%	29,583	82.7%	1,624	4.5%	4,565	12.8%
2000-01	37,529	4.9%	31,068	82.8%	1,725	4.6%	4,736	12.6%
2001-02	40,149	7.0%	33,812	84.2%	1,053	2.6%	5,284	13.2%
2002-03	42,043	4.7%	35,346	84.1%	982	2.3%	5,715	13.6%
2003-04	43,417	3.3%	36,582	84.3%	1,010	2.3%	5,825	13.4%
2004-05	46,140	6.3%	39,173	84.9%	1,010	2.2%	5,957	12.9%
2005-06	47,530	3.0%	40,308	84.8%	988	2.1%	6,234	13.1%
2006-07	51,047	7.4%	43,605	85.4%	931	1.8%	6,511	12.8%
2007-08	53,502	4.8%	45,792	85.6%	975	1.8%	6,735	12.6%

**PAROLE GRANT RATES IN TENNESSEE**  
**FISCAL YEARS 2003/04 - 2008/09**  
**May 2009**

	TOTAL HEARINGS	PAROLE GRANTED	% OF TOTAL	PAROLE DENIED	% OF TOTAL	PAROLE DENIED/WAIVED	% OF TOTAL	CONT.	% OF TOTAL	CONT./WAIVED	% OF TOTAL
<b>2003/2004</b>											
TOTAL	12,658	3,481	27.5%	8,238	65.1%			939	7.4%		
<b>2004/2005</b>											
TOTAL	13,023	3,845	29.5%	7,260	55.7%	8,139	62.5%	866	6.6%	173	1.3%
<b>2005/2006</b>											
TOTAL	14,126	4,400	31.1%	7,656	54.2%	935	6.6%	918	6.5%	217	1.5%
<b>2006/2007*</b>											
TOTAL	13,985	4,778	34.2%	7,359	52.6%	793	5.7%	773	5.5%	282	2.0%

**2007/2008**

JULY	1,464	463	31.6%	798	54.5%	95	6.5%	83	5.7%	25	1.7%
AUGUST	1,335	386	28.9%	747	56.0%	77	5.8%	99	7.4%	26	1.9%
SEPTEMBER	972	312	32.1%	526	54.1%	57	5.9%	62	6.4%	15	1.5%
OCTOBER	1,373	411	29.9%	757	55.1%	99	7.2%	73	5.3%	33	2.4%
NOVEMBER	1,312	428	32.6%	684	52.1%	77	5.9%	92	7.0%	31	2.4%
DECEMBER	883	291	33.0%	479	54.2%	41	4.6%	57	6.5%	15	1.7%
JANUARY	1,091	289	26.5%	644	59.0%	69	6.3%	62	5.7%	27	2.5%
FEBRUARY	1,232	340	27.6%	723	58.7%	71	5.8%	69	5.6%	29	2.4%
MARCH	1,218	378	31.0%	693	56.9%	67	5.5%	61	5.0%	19	1.6%
APRIL	1,187	347	29.2%	684	57.6%	71	6.0%	63	5.3%	22	1.9%
MAY	1,135	315	27.8%	640	56.4%	88	7.8%	72	6.3%	20	1.8%
JUNE	1,125	326	29.0%	631	56.1%	74	6.6%	79	7.0%	15	1.3%
TOTAL	14,327	4,286	29.9%	8,006	55.9%	886	6.2%	872	6.1%	277	1.9%

**2008/2009**

JULY	1,145	341	29.8%	626	54.7%	70	6.1%	87	7.6%	21	1.8%
AUGUST	1,182	375	31.7%	653	55.2%	64	5.4%	61	5.2%	29	2.5%
SEPTEMBER	1,305	439	33.6%	683	52.3%	64	4.9%	81	6.2%	38	2.9%
OCTOBER	1,384	429	31.0%	780	56.4%	68	4.9%	60	4.3%	47	3.4%
NOVEMBER	928	311	33.5%	499	53.8%	50	5.4%	56	6.0%	12	1.3%
DECEMBER	1,117	485	43.4%	505	45.2%	46	4.1%	53	4.7%	28	2.5%
JANUARY	1,053	438	41.6%	453	43.0%	63	6.0%	64	6.1%	35	3.3%
FEBRUARY	1,233	504	40.9%	556	45.1%	66	5.4%	74	6.0%	33	2.7%
MARCH	1,138	443	38.9%	529	46.5%	72	6.3%	69	6.1%	25	2.2%
APRIL	1,175	493	42.0%	535	45.5%	46	3.9%	59	5.0%	42	3.6%
MAY	968	420	43.4%	441	45.6%	53	5.5%	47	4.9%	7	0.7%
JUNE											
TOTAL	12,628	4,678	37.0%	6,260	49.6%	662	5.2%	711	5.6%	317	2.5%

\*As of the May 2007 report, the denied category has been broken out into denied and denied/waived, and the continue category has been broken out into continued and continued/waived. These categories are more definitive and will ensure that TDOC and BOPP reported statistics are more consistent. Data for this breakout is not available prior to FY 2005-2006.

Parole statistics are incomplete because all data are not received by TDOC immediately after inmates are paroled. Therefore, the numbers for any given month may be different from the previous month's report

## PAROLE POPULATIONS FISCAL YEARS 2003/2004 - 2008/2009

**2003/2004 AVERAGE ACTIVE POPULATION 8,008**  
**2004/2005 AVERAGE ACTIVE POPULATION 8,369**  
**2005/2006 AVERAGE ACTIVE POPULATION 8,757**

### 2006/2007

	ACTIVE POPULATION	MONTHLY CHANGE	PERCENT CHANGE
JULY	9,233	9,233	0.1%
AUGUST	9,374	141	0.5%
SEPTEMBER	9,433	59	0.6%
OCTOBER	9,530	97	1.0%
NOVEMBER	9,622	92	1.0%
DECEMBER	9,702	80	0.8%
JANUARY	9,784	82	0.8%
FEBRUARY	9,815	31	0.3%
MARCH	9,850	35	0.4%
APRIL	9,883	33	0.3%
MAY	10,017	134	1.4%
JUNE	10,163	146	1.5%
<b>AVERAGE</b>	<b>9,701</b>		

### 2007/2008

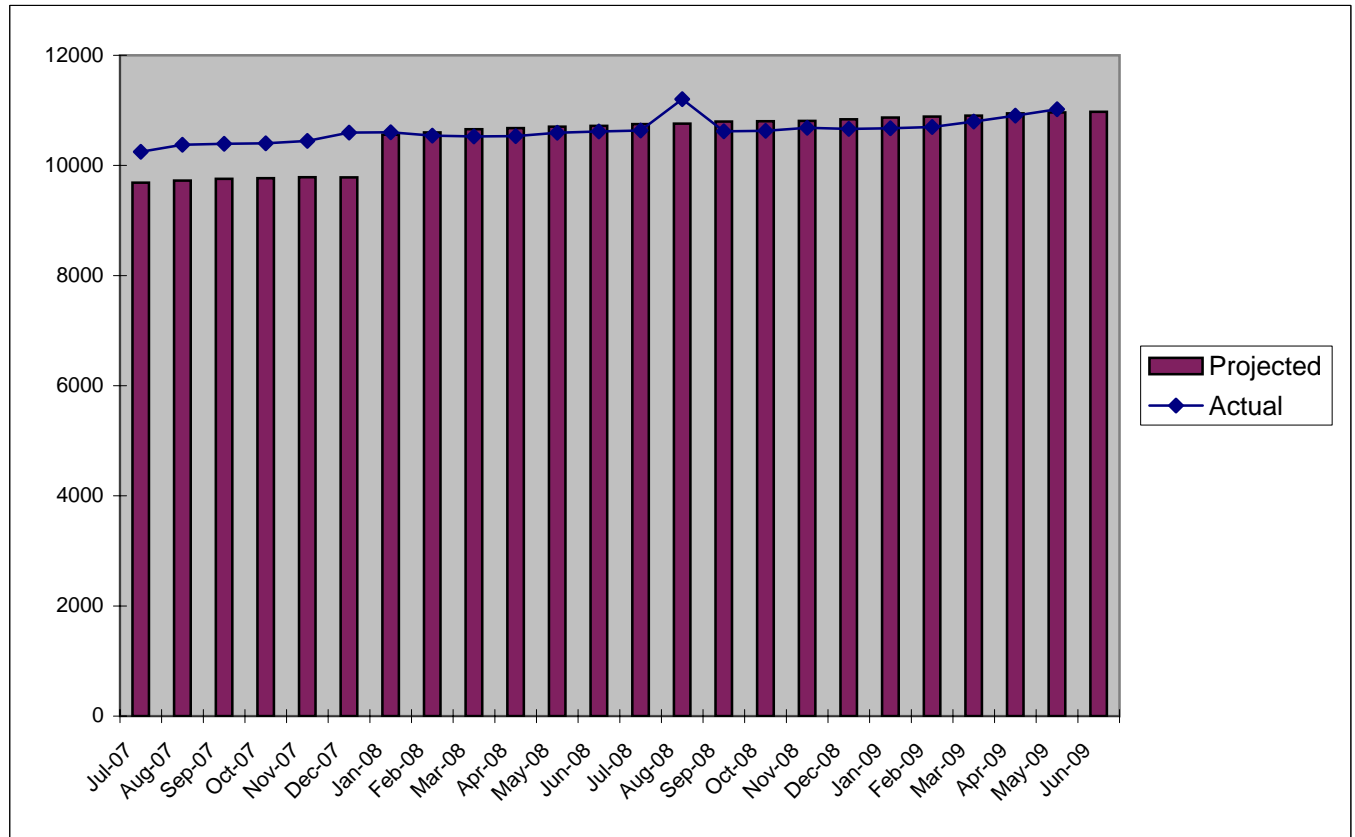
	ACTIVE POPULATION	MONTHLY CHANGE	PERCENT CHANGE
JULY	10,249	86	0.8%
AUGUST	10,377	128	1.2%
SEPTEMBER	10,392	15	0.1%
OCTOBER	10,402	10	0.1%
NOVEMBER	10,445	43	0.4%
DECEMBER	10,597	152	1.5%
JANUARY	10,601	4	0.0%
FEBRUARY	10,542	-59	-0.6%
MARCH	10,527	-15	-0.1%
APRIL	10,533	6	0.1%
MAY	10,594	61	0.6%
JUNE	10,617	23	0.2%
<b>AVERAGE</b>	<b>10,490</b>		

### 2008/2009

	ACTIVE POPULATION	MONTHLY CHANGE	PERCENT CHANGE
JULY	10,634	17	0.2%
AUGUST	11,205	571	5.1%
SEPTEMBER	10,621	-584	-5.5%
OCTOBER	10,630	9	0.1%
NOVEMBER	10,683	53	0.5%
DECEMBER	10,663	-20	-0.2%
JANUARY	10,675	12	0.1%
FEBRUARY	10,698	23	0.2%
MARCH	10,796	98	0.9%
APRIL	10,905	109	1.0%
MAY	11,021	116	1.1%
JUNE			
<b>AVERAGE</b>	<b>10,776</b>		

## PAROLE POPULATION PROJECTIONS VS. ACTUAL JULY 2007 THROUGH JUNE 2009

	Projected	Actual	Diff.	% Diff.
Jul-06	8810	9233	-423	-4.6%
Aug-06	8844	9374	-530	-5.7%
Sep-06	8872	9433	-561	-5.9%
Oct-06	8883	9530	-647	-6.8%
Nov-06	8899	9622	-723	-7.5%
Dec-06	8895	9702	-807	-8.3%
Jan-07	9557	9784	-227	-2.3%
Feb-07	9556	9815	-259	-2.6%
Mar-07	9560	9850	-290	-2.9%
Apr-07	9572	9883	-311	-3.1%
May-07	9629	10017	-388	-3.9%
Jun-07	9658	10163	-505	-5.0%
Jul-07	9688	10,249	-561	-5.5%
Aug-07	9726	10,377	-651	-6.3%
Sep-07	9756	10,392	-636	-6.1%
Oct-07	9768	10,402	-634	-6.1%
Nov-07	9786	10,445	-659	-6.3%
Dec-07	9782	10,597	-815	-7.7%
Jan-08	10559	10,601	-42	-0.4%
Feb-08	10600	10,542	58	0.6%
Mar-08	10659	10,527	132	1.3%
Apr-08	10677	10,533	144	1.4%
May-08	10703	10,594	109	1.0%
Jun-08	10720	10,617	103	1.0%
Jul-08	10751	10,634	117	1.1%
Aug-08	10759	11,205	-446	-4.0%
Sep-08	10797	10,621	176	1.7%
Oct-08	10803	10,630	173	1.6%
Nov-08	10808	10,683	125	1.2%
Dec-08	10839	10,663	176	1.7%
Jan-09	10871	10,675	196	1.8%
Feb-09	10887	10,698	189	1.8%
Mar-09	10905	10,796	109	1.0%
Apr-09	10946	10,905	41	0.4%
May-09	10962	11,021	-59	-0.5%
Jun-09	10973			



**Projections Updated January 2008**

# BLUE REPORT USER'S GUIDE

## Incarcerated Population

**TDOC Backup:** Felons sentenced to TDOC custody and held in local jails while awaiting transfer to a TDOC institution.

**Locally Sentenced:** Convicted felons sentenced to serve their time in a local jail. As felony offenders, these persons are under TDOC jurisdiction.

**Other Convicted Felons:** Convicted felons awaiting sentencing or not yet ready for transfer to TDOC because of other pending charges. Includes technical violators awaiting probable cause/revocation/recission hearing or adjudication of pending charges.

**Convicted Misdemeanants:** Inmates serving time because of a misdemeanor conviction.

**Total Pre-Trial Detainees:** Includes inmates charged with either a felony or a misdemeanor but not yet convicted.

**Others:** Inmates held in local facilities for federal crimes, city ordinances, etc.

**Community Corrections:** A grant program created in 1985 as an alternative to incarceration. Programs are developed based on the individual needs of the area served.

## Admissions

**New Commits:** Refers to any person convicted of a felony sentenced to TDOC, but who is not on probation or parole. This may include persons who had prior incarcerations.

**Violators Returned:** Refers to commitment of felons on technical violations of the conditions of their parole or probation, or community correction terms.

## Releases

**Parole:** Felons originally sentenced to an incarceration period and released to serve the remainder of their sentence under supervision.

**Probation-Community Correction:** Usually non-violent felons sentenced to serve a split sentence; a short jail or prison term and the remainder under state supervision.

## General Notes

**Backup:** All offenders sentenced to TDOC custody are counted as admissions. Some offenders are held in backup at a local jail while awaiting transfer to a TDOC facility. This is due to lack of room for all offenders in TDOC facilities. Offenders in backup can be released for a number of reasons before they are transferred to TDOC. Inmates released from Backup to a TDOC facility are not counted as releases.

**Primary Offense:** As of July 2000, offenses are categorized according to the Tennessee Incident Based Reporting System (TIBRS) which is based on the FBI's National Incident Based Reporting System (NIBRS). This system of reporting is an attempt to standardize categorical offense reporting across criminal justice agencies. For more detail on how TCA code is categorized according to the TIBRS system, see the TBI website at <http://www.tbi.state.tn.us/tca.htm> or the TDOC Research Brief, "Assessing the Impact of the TIBRS on TDOC Criminal Offense Reporting."

**Projected Felon Population-Admissions & Releases:** is taken from the Annual Felon Population Projection Report. Ten year felon projections including admissions and releases are estimated every fall in order to help the TDOC in it's long term strategic planning. The current projections can be found on our website at <http://www.state.tn.us/corrections>.

Total TDOC Inmates, considered "backup" for TDOC purposes, refers to inmates sentenced to TDOC custody and held in local jails while awaiting transfer to a TDOC institution.