

Tennessee Felon Population Update

June 2009

Prepared By:

**Tennessee Department of Correction
Policy, Planning, and Research Section**

TENNESSEE FELON POPULATION UPDATE
TABLE OF CONTENTS
June 2009

| | |
|--|----|
| Felon Population by Primary Offense Fiscal Year 2003/2004 to Present | 1 |
| Felon Population Projections vs. Actual Graph July 2005 to Present | 2 |
| Felon Inmate Population Projections vs. Actual Fiscal Year 2007/2008 to Present | 3 |
| Incarcerated Felon Population Fiscal Year 2003/2004 to Present | 4 |
| Incarcerated Felon Populations Fiscal Year 1996/1997 - 2007/2008 | 5 |
| Local Jail Populations by Category Fiscal Years 2007/2008 to Present | 6 |
| Felon Admissions in Tennessee Fiscal Year 2008/2009 | 7 |
| Felon Admissions in Tennessee Fiscal Year 2007/2008 | 8 |
| Felon Admissions in Tennessee Fiscal Years 1997/1998 - 2007/2008 | 9 |
| Felon Releases in Tennessee Fiscal Year 2008/2009 | 10 |
| Felon Releases in Tennessee Fiscal Year 2007/2008 | 11 |
| Felon Releases in Tennessee Fiscal Years 1997/1998 - 2007/2008 | 12 |
| Projected Felon Admissions vs. Actual Fiscal Year 2007/2008 - 2008/2009 | 13 |
| Projected Felon Releases Vs. Actual Fiscal Year 2007/2008 - 2008/2009 | 14 |
| Community Services Population Fiscal Years 2002/2003 to Present | 15 |
| Community Services Projections Vs. Actual July 2007 to Present | 16 |
| Community Services Population Fiscal Years 1996/1997 - 2007/2008 | 17 |
| Parole Grant Rates in Tennessee Fiscal Years 2003/2004 to Present | 18 |
| Parole Population Fiscal Years 2003/2004 to Present | 19 |
| Parole Population Projections vs. Actual Graph Fiscal Year 2006/2007 to Present | 20 |

**TDOC POPULATION BY PRIMARY OFFENSE
AS OF May 31, 2009****

| TOTAL POP. | Monthly Change | Homicide | % OF TOTAL | Monthly Change | Kidnap | % OF TOTAL | Monthly Change | Sex Ofnder | % OF TOTAL | Monthly Change | Robbery | % OF TOTAL | Monthly Change | **Property | % OF TOTAL | Monthly Change | Assault | % OF TOTAL | Monthly Change | Drugs | % OF TOTAL | Monthly Change | Other | % OF TOTAL | Monthly Change |
|------------|----------------|----------|------------|----------------|--------|------------|----------------|------------|------------|----------------|---------|------------|----------------|------------|------------|----------------|---------|------------|----------------|-------|------------|----------------|-------|------------|----------------|
|------------|----------------|----------|------------|----------------|--------|------------|----------------|------------|------------|----------------|---------|------------|----------------|------------|------------|----------------|---------|------------|----------------|-------|------------|----------------|-------|------------|----------------|

Averages

| | | | | | | | | | | | | | | | | | | | | | | | | | |
|----------|--------|------|-------|-------|--|-----|------|--|-------|-------|--|-------|-------|--|-------|-------|--|-------|-------|--|-------|-------|--|-------|------|
| FY 03/04 | 19,213 | 0.4% | 3,503 | 18.1% | | 247 | 1.3% | | 2,786 | 14.4% | | 3,348 | 17.3% | | 3,240 | 16.7% | | 2,170 | 11.2% | | 2,595 | 13.4% | | 1,324 | 6.8% |
| FY 04/05 | 19,263 | 0.0% | 3,543 | 18.4% | | 249 | 1.3% | | 2,797 | 14.5% | | 3,320 | 17.2% | | 3,144 | 16.3% | | 2,195 | 11.4% | | 2,682 | 13.9% | | 1,332 | 6.9% |
| FY 05/06 | 19,248 | 0.0% | 3,574 | 18.6% | | 242 | 1.3% | | 2,802 | 14.6% | | 3,164 | 16.4% | | 3,127 | 16.2% | | 2,187 | 11.4% | | 2,805 | 14.6% | | 1,347 | 7.0% |
| FY 06/07 | 19,216 | 0.0% | 3,593 | 18.6% | | 227 | 1.3% | | 2,815 | 14.6% | | 2,955 | 16.4% | | 3,140 | 16.2% | | 2,164 | 11.4% | | 2,930 | 14.6% | | 1,391 | 7.0% |

2007/2008

| | | | | | | | | | | | | | | | | | | | | | | | | | | |
|---------------|---------------|-------------|--------------|--------------|-------------|------------|-------------|--------------|--------------|--------------|-------------|--------------|--------------|--------------|--------------|--------------|--------------|--------------|--------------|-------------|--------------|--------------|-------------|--------------|-------------|-------------|
| JUL | 19,172 | -0.2% | 3,612 | 18.8% | 3.1% | 245 | 1.3% | -0.8% | 2,809 | 14.7% | 0.8% | 2,868 | 15.0% | -14.3% | 3,143 | 16.4% | -3.0% | 2,141 | 11.2% | -1.3% | 2,940 | 15.3% | 13.3% | 1,414 | 7.4% | 6.8% |
| AUG | 19,174 | 0.0% | 3,616 | 18.9% | 0.1% | 245 | 1.3% | 0.0% | 2,808 | 14.6% | 0.0% | 2,867 | 15.0% | 0.0% | 3,143 | 16.4% | 0.0% | 2,136 | 11.1% | -0.2% | 2,942 | 15.3% | 0.1% | 1,417 | 7.4% | 0.2% |
| SEP | 19,239 | 0.3% | 3,622 | 18.8% | 0.2% | 247 | 1.3% | 0.8% | 2,808 | 14.6% | 0.0% | 2,894 | 15.0% | 0.9% | 3,118 | 16.2% | -0.8% | 2,149 | 11.2% | 0.6% | 2,974 | 15.5% | 1.1% | 1,427 | 7.4% | 0.7% |
| OCT | 19,293 | 0.3% | 3,624 | 18.8% | 0.1% | 246 | 1.3% | -0.4% | 2,817 | 14.6% | 0.3% | 2,909 | 15.1% | 0.5% | 3,128 | 16.2% | 0.3% | 2,143 | 11.1% | -0.3% | 2,994 | 15.5% | 0.7% | 1,432 | 7.4% | 0.4% |
| NOV | 19,300 | 0.0% | 3,621 | 18.8% | -0.1% | 248 | 1.3% | 0.8% | 2,802 | 14.5% | -0.5% | 2,894 | 15.0% | -0.5% | 3,134 | 16.2% | 0.2% | 2,165 | 11.2% | 1.0% | 3,003 | 15.6% | 0.3% | 1,433 | 7.4% | 0.1% |
| DEC | 19,101 | -1.0% | 3,616 | 18.9% | -0.1% | 243 | 1.3% | -2.0% | 2,794 | 14.6% | -0.3% | 2,852 | 14.9% | -1.5% | 3,094 | 16.2% | -1.3% | 2,131 | 11.2% | -1.6% | 2,966 | 15.5% | -1.2% | 1,405 | 7.4% | -2.0% |
| JAN | 19,244 | 0.7% | 3,624 | 18.8% | 0.2% | 241 | 1.3% | -0.8% | 2,798 | 14.5% | 0.1% | 2,851 | 14.8% | 0.0% | 3,124 | 16.2% | 1.0% | 2,149 | 11.2% | 0.8% | 3,025 | 15.7% | 2.0% | 1,432 | 7.4% | 1.9% |
| FEB | 19,275 | 0.2% | 3,633 | 18.8% | 0.2% | 242 | 1.3% | 0.4% | 2,799 | 14.5% | 0.0% | 2,846 | 14.8% | -0.2% | 3,146 | 16.3% | 0.7% | 2,147 | 11.1% | -0.1% | 3,016 | 15.6% | -0.3% | 1,446 | 7.5% | 1.0% |
| MAR | 19,275 | 0.0% | 3,638 | 18.9% | 0.1% | 242 | 1.3% | 0.0% | 2,800 | 14.5% | 0.0% | 2,855 | 14.8% | 0.3% | 3,137 | 16.3% | -0.3% | 2,131 | 11.1% | -0.7% | 3,016 | 15.6% | 0.0% | 1,456 | 7.6% | 0.7% |
| APR | 19,357 | 0.4% | 3,641 | 18.8% | 0.1% | 241 | 1.2% | -0.4% | 2,812 | 14.5% | 0.4% | 2,819 | 14.6% | -1.3% | 3,161 | 16.3% | 0.8% | 2,144 | 11.1% | 0.6% | 3,055 | 15.8% | 1.3% | 1,484 | 7.7% | 1.9% |
| MAY | 19,335 | -0.1% | 3,647 | 18.9% | 0.2% | 243 | 1.3% | 0.8% | 2,791 | 14.4% | -0.7% | 2,835 | 14.7% | 0.6% | 3,114 | 16.1% | -1.5% | 2,157 | 11.2% | 0.6% | 3,067 | 15.9% | 0.4% | 1,481 | 7.7% | -0.2% |
| JUN | 19,333 | 0.0% | 3,650 | 18.9% | 0.1% | 244 | 1.3% | 0.4% | 2,779 | 14.4% | -0.4% | 2,843 | 14.7% | 0.3% | 3,093 | 16.0% | -0.7% | 2,164 | 11.2% | 0.3% | 3,054 | 15.8% | -0.4% | 1,506 | 7.8% | 1.7% |
| FY AVG | 19,258 | 0.1% | 3,629 | 18.8% | 0.3% | 244 | 1.3% | -0.1% | 2,801 | 14.5% | 0.0% | 2,861 | 14.9% | -1.3% | 3,128 | 16.2% | -0.4% | 2,146 | 11.1% | 0.0% | 3,004 | 15.6% | 1.4% | 1,444 | 7.5% | 1.1% |

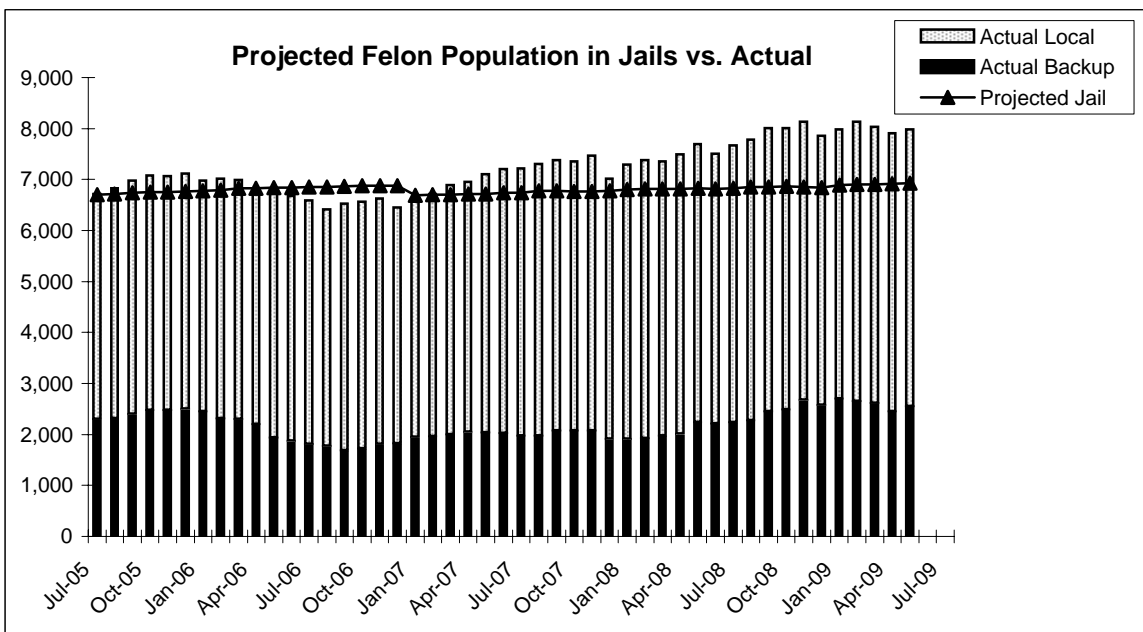
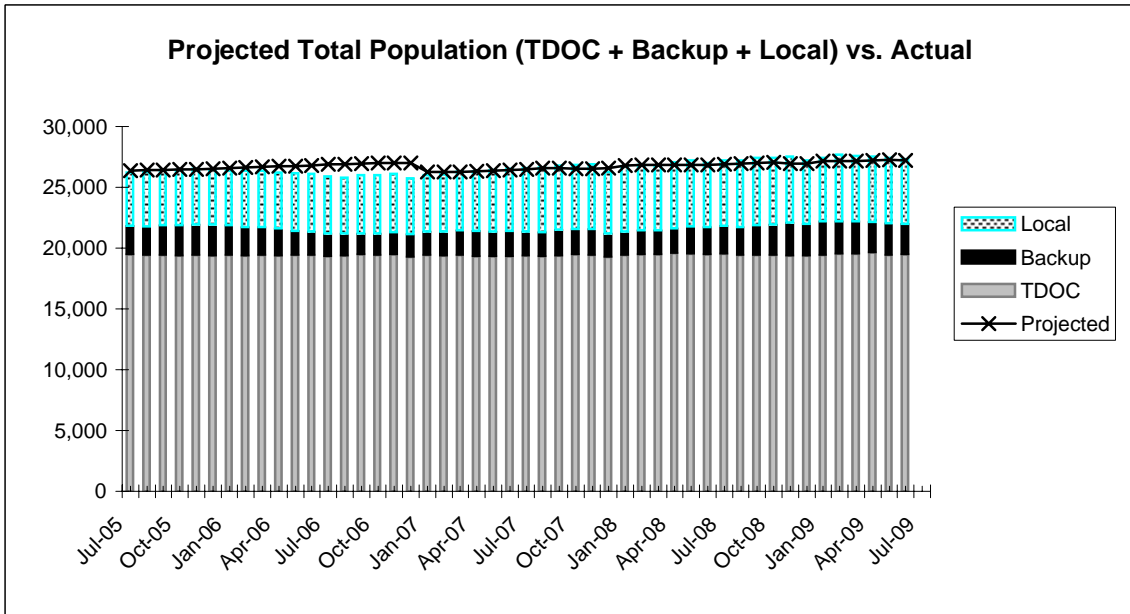
2008/2009

| | | | | | | | | | | | | | | | | | | | | | | | | | | |
|---------------|---------------|-------------|--------------|--------------|-------------|------------|-------------|--------------|--------------|--------------|--------------|--------------|--------------|-------------|--------------|--------------|--------------|--------------|--------------|-------------|--------------|--------------|-------------|--------------|-------------|--------------|
| JUL | 19,364 | 0.2% | 3,662 | 18.9% | 0.3% | 242 | 1.2% | -0.8% | 2,787 | 14.4% | 0.3% | 2,849 | 14.7% | 0.2% | 3,042 | 15.7% | -1.6% | 2,178 | 11.2% | 0.6% | 3,095 | 16.0% | 1.3% | 1,509 | 7.8% | 0.2% |
| AUG | 19,284 | -0.4% | 3,663 | 19.0% | 0.0% | 239 | 1.2% | -1.2% | 2,789 | 14.5% | 0.1% | 2,839 | 14.7% | -0.4% | 3,005 | 15.6% | -1.2% | 2,175 | 11.3% | -0.1% | 3,080 | 16.0% | -0.5% | 1,494 | 7.7% | -1.0% |
| SEP | 19,251 | -0.2% | 3,667 | 19.0% | 0.1% | 236 | 1.2% | -1.3% | 2,792 | 14.5% | 0.1% | 2,843 | 14.8% | 0.1% | 2,990 | 15.5% | -0.5% | 2,175 | 11.3% | 0.0% | 3,068 | 15.9% | -0.4% | 1,480 | 7.7% | -0.9% |
| OCT | 19,305 | 0.3% | 3,680 | 19.1% | 0.4% | 235 | 1.2% | -0.4% | 2,788 | 14.4% | -0.1% | 2,883 | 14.9% | 1.4% | 3,022 | 15.7% | 1.1% | 2,175 | 11.3% | 0.0% | 3,039 | 15.7% | -0.9% | 1,483 | 7.7% | 0.2% |
| NOV | 19,230 | -0.4% | 3,680 | 19.1% | 0.0% | 235 | 1.2% | 0.0% | 2,783 | 14.5% | -0.2% | 2,861 | 14.9% | -0.8% | 3,004 | 15.6% | -0.6% | 2,169 | 11.3% | -0.3% | 3,040 | 15.8% | 0.0% | 1,458 | 7.6% | -1.7% |
| DEC | 19,244 | 0.1% | 3,694 | 19.2% | 0.4% | 233 | 1.2% | -0.9% | 2,776 | 14.4% | -0.3% | 2,870 | 14.9% | 0.3% | 2,976 | 15.5% | -0.9% | 2,146 | 11.2% | -1.1% | 3,082 | 16.0% | 1.4% | 1,467 | 7.6% | 0.6% |
| JAN | 19,282 | 0.2% | 3,708 | 19.2% | 0.4% | 232 | 1.2% | -0.4% | 2,767 | 14.4% | -0.3% | 2,862 | 14.8% | -0.3% | 2,982 | 15.5% | 0.2% | 2,154 | 11.2% | 0.4% | 3,120 | 16.2% | 1.2% | 1,457 | 7.6% | -0.7% |
| FEB | 19,259 | -0.1% | 3,620 | 18.8% | -2.4% | 236 | 1.2% | 1.7% | 2,805 | 14.6% | 1.4% | 2,843 | 14.8% | -0.7% | 2,981 | 15.5% | 0.0% | 2,153 | 11.2% | 0.0% | 2,942 | 15.3% | -5.7% | 1,679 | 8.7% | 15.2% |
| MAR | 19,392 | 0.7% | 3,711 | 19.1% | 2.5% | 235 | 1.2% | -0.4% | 2,765 | 14.3% | -1.4% | 2,887 | 14.9% | 1.5% | 3,024 | 15.6% | 1.4% | 2,186 | 11.3% | 1.5% | 3,129 | 16.1% | 6.4% | 1,455 | 7.5% | -13.3% |
| APR | 19,446 | 0.3% | 3,722 | 19.1% | 0.3% | 236 | 1.2% | 0.4% | 2,775 | 14.3% | 0.4% | 2,862 | 14.7% | -0.9% | 3,014 | 15.5% | -0.3% | 2,196 | 11.3% | 0.5% | 3,147 | 16.2% | 0.6% | 1,494 | 7.7% | 2.7% |
| MAY | 19,265 | -0.9% | 3,722 | 19.3% | 0.0% | 234 | 1.2% | -0.8% | 2,762 | 14.3% | -0.5% | 2,847 | 14.8% | -0.5% | 2,960 | 15.4% | -1.8% | 2,183 | 11.3% | -0.6% | 3,102 | 16.1% | -1.4% | 1,455 | 7.6% | -2.6% |
| JUN | | | | | | | | | | | | | | | | | | | | | | | | | | |
| FY AVG | 19,302 | 0.0% | 3,684 | 19.1% | 0.2% | 236 | 1.2% | -0.4% | 2,781 | 14.4% | -0.1% | 2,859 | 14.8% | 0.0% | 3,000 | 15.5% | -0.4% | 2,172 | 11.3% | 0.1% | 3,077 | 15.9% | 0.2% | 1,494 | 7.7% | -0.1% |

****All Primary Offense information is reported one month in arrears.**

***Excludes Robbery (Prior to September 2000, these offenses only included Theft, Stolen Property and Burglary - now includes All Property except Robbery).

PROJECTED POPULATION VS. ACTUAL JULY 2005 TO PRESENT



Projections Updated January 2008

**INCARCERATED FELON POPULATION
PROJECTIONS VS. ACTUAL
AS OF June 30, 2009**

| 2007/2008 | PROJECTED | ACTUAL | DIFF | % DIFF |
|-------------------|-----------|--------|------|---------|
| JULY | 26,450 | 26,573 | -123 | -0.5% * |
| AUGUST | 26,579 | 26,622 | -43 | -0.2% |
| SEPTEMBER | 26,595 | 26,772 | -177 | -0.7% |
| OCTOBER | 26,548 | 26,829 | -281 | -1.0% |
| NOVEMBER | 26,544 | 26,904 | -360 | -1.3% |
| DECEMBER | 26,590 | 26,267 | 323 | 1.2% |
| JANUARY | 26,782 | 26,728 | 54 | 0.2% |
| FEBRUARY | 26,825 | 26,850 | -25 | -0.1% |
| MARCH | 26,830 | 26,805 | 25 | 0.1% |
| APRIL | 26,842 | 27,054 | -212 | -0.8% |
| MAY | 26,861 | 27,204 | -343 | -1.3% |
| JUNE | 26,849 | 26,998 | -149 | -0.6% |
| FY AVERAGE | 26,691 | 26,801 | -109 | -0.4% |

| 2008/2009 | PROJECTED | ACTUAL | DIFF | % DIFF |
|-------------------|-----------|--------|------|--------|
| JULY | 26,906 | 27,204 | -298 | -1.1% |
| AUGUST | 26,971 | 27,204 | -233 | -0.9% |
| SEPTEMBER | 26,995 | 27,421 | -426 | -1.6% |
| OCTOBER | 27,040 | 27,431 | -391 | -1.4% |
| NOVEMBER | 26,968 | 27,507 | -539 | -2.0% |
| DECEMBER | 26,950 | 27,228 | -278 | -1.0% |
| JANUARY | 27,135 | 27,408 | -273 | -1.0% |
| FEBRUARY | 27,159 | 27,669 | -510 | -1.8% |
| MARCH | 27,171 | 27,573 | -402 | -1.5% |
| APRIL | 27,226 | 27,546 | -320 | -1.2% |
| MAY | 27,266 | 27,419 | -153 | -0.6% |
| JUNE | 27,221 | 27,325 | -104 | -0.4% |
| FY AVERAGE | 27,084 | 27,411 | -327 | -1.2% |

*These tables compare the accuracy of the projection model by comparing the projected population to the actual population. Months in which the projected population is less than the actual population will be represented with a negative sign.

NOTE: Projections were updated January 2008.
Averages are column averages.

INCARCERATED FELON POPULATION AS OF June 30, 2009

| | Total Felon Population (A+B+C) | Monthly Change | Monthly Percent Change | TDOC Facilities (A) | Percent of Total | TDOC Backup (B) | Percent of Total | Locally Sentenced (C) | Percent of Total | Local Jail Total (B+C) |
|------------------|---|-------------------|------------------------------|---------------------------|---------------------|-----------------------|---------------------|-----------------------------|---------------------|------------------------------|
| FY AVG. | | | | | | | | | | |
| 2003/2004 | 25,635 | 33 | 0.1% | 19,404 | 75.7% | 2,021 | 7.9% | 4,210 | 16.4% | 6,231 |
| 2004/2005 | 26,035 | 26 | 0.1% | 19,431 | 74.6% | 2,180 | 8.4% | 4,425 | 17.0% | 6,605 |
| 2005/2006 | 26,323 | -8 | 0.0% | 19,406 | 73.7% | 2,293 | 8.7% | 4,624 | 17.6% | 6,917 |

2006-07

| | | | | | | | | | | |
|-------------------|--------|------|-------|--------|-------|-------|------|-------|-------|-------|
| JULY | 25,918 | -405 | -1.5% | 19,331 | 74.6% | 1,809 | 7.0% | 4,778 | 18.4% | 6,587 |
| AUGUST | 25,792 | -126 | -0.5% | 19,377 | 75.1% | 1,772 | 6.9% | 4,643 | 18.0% | 6,415 |
| SEPTEMBER | 26,015 | 223 | 0.9% | 19,490 | 74.9% | 1,685 | 6.5% | 4,840 | 18.6% | 6,525 |
| OCTOBER | 25,993 | -22 | -0.1% | 19,432 | 74.8% | 1,725 | 6.6% | 4,836 | 18.6% | 6,561 |
| NOVEMBER | 26,084 | 91 | 0.4% | 19,458 | 74.6% | 1,813 | 7.0% | 4,813 | 18.5% | 6,626 |
| DECEMBER | 25,733 | -351 | -1.3% | 19,282 | 74.9% | 1,817 | 7.1% | 4,634 | 18.0% | 6,451 |
| JANUARY | 26,006 | 273 | 1.1% | 19,396 | 74.6% | 1,946 | 7.5% | 4,664 | 17.9% | 6,610 |
| FEBRUARY | 26,064 | 58 | 0.2% | 19,344 | 74.2% | 1,963 | 7.5% | 4,757 | 18.3% | 6,720 |
| MARCH | 26,334 | 270 | 1.0% | 19,445 | 73.8% | 1,993 | 7.6% | 4,896 | 18.6% | 6,889 |
| APRIL | 26,297 | -37 | -0.1% | 19,342 | 73.6% | 2,048 | 7.8% | 4,907 | 18.7% | 6,955 |
| MAY | 26,413 | 116 | 0.4% | 19,304 | 73.1% | 2,029 | 7.7% | 5,080 | 19.2% | 7,109 |
| JUNE | 26,551 | 138 | 0.5% | 19,341 | 72.8% | 2,023 | 7.6% | 5,187 | 19.5% | 7,210 |
| FY Average | 26,100 | 19 | 0.1% | 19,379 | 74.3% | 1,885 | 7.2% | 4,836 | 18.5% | 6,722 |

2007/2008

| | | | | | | | | | | |
|-------------------|--------|------|-------|--------|-------|-------|------|-------|-------|-------|
| JULY | 26,573 | 22 | 0.1% | 19,354 | 72.8% | 1,974 | 7.4% | 5,245 | 19.7% | 7,219 |
| AUGUST | 26,622 | 49 | 0.2% | 19,319 | 72.6% | 1,967 | 7.4% | 5,336 | 20.0% | 7,303 |
| SEPTEMBER | 26,772 | 150 | 0.6% | 19,391 | 72.4% | 2,073 | 7.7% | 5,308 | 19.8% | 7,381 |
| OCTOBER | 26,829 | 57 | 0.2% | 19,470 | 72.6% | 2,072 | 7.7% | 5,287 | 19.7% | 7,359 |
| NOVEMBER | 26,904 | 75 | 0.3% | 19,432 | 72.2% | 2,069 | 7.7% | 5,403 | 20.1% | 7,472 |
| DECEMBER | 26,267 | -637 | -2.4% | 19,248 | 73.3% | 1,910 | 7.3% | 5,109 | 19.5% | 7,019 |
| JANUARY | 26,728 | 461 | 1.8% | 19,429 | 72.7% | 1,903 | 7.1% | 5,396 | 20.2% | 7,299 |
| FEBRUARY | 26,850 | 122 | 0.5% | 19,475 | 72.5% | 1,922 | 7.2% | 5,453 | 20.3% | 7,375 |
| MARCH | 26,805 | -45 | -0.2% | 19,454 | 72.6% | 1,969 | 7.3% | 5,382 | 20.1% | 7,351 |
| APRIL | 27,054 | 249 | 0.9% | 19,560 | 72.3% | 2,007 | 7.4% | 5,487 | 20.3% | 7,494 |
| MAY | 27,204 | 150 | 0.6% | 19,509 | 71.7% | 2,235 | 8.2% | 5,460 | 20.1% | 7,695 |
| JUNE | 26,998 | -206 | -0.8% | 19,497 | 72.2% | 2,204 | 8.2% | 5,297 | 19.6% | 7,501 |
| FY Average | 26,801 | 37 | 0.1% | 19,428 | 72.5% | 2,025 | 7.6% | 5,347 | 19.9% | 7,372 |

2008/2009

| | | | | | | | | | | |
|-------------------|--------|------|-------|--------|-------|-------|------|-------|-------|-------|
| JULY | 27,204 | 206 | 0.8% | 19,530 | 71.8% | 2,239 | 8.2% | 5,435 | 20.0% | 7,674 |
| AUGUST | 27,204 | 0 | 0.0% | 19,427 | 71.4% | 2,274 | 8.4% | 5,503 | 20.2% | 7,777 |
| SEPTEMBER | 27,421 | 217 | 0.8% | 19,410 | 70.8% | 2,446 | 8.9% | 5,565 | 20.3% | 8,011 |
| OCTOBER | 27,431 | 10 | 0.0% | 19,417 | 70.8% | 2,483 | 9.1% | 5,531 | 20.2% | 8,014 |
| NOVEMBER | 27,507 | 76 | 0.3% | 19,369 | 70.4% | 2,669 | 9.7% | 5,469 | 19.9% | 8,138 |
| DECEMBER | 27,228 | -279 | -1.0% | 19,368 | 71.1% | 2,577 | 9.5% | 5,283 | 19.4% | 7,860 |
| JANUARY | 27,408 | 180 | 0.7% | 19,431 | 70.9% | 2,705 | 9.9% | 5,272 | 19.2% | 7,977 |
| FEBRUARY | 27,669 | 261 | 1.0% | 19,534 | 70.6% | 2,647 | 9.6% | 5,488 | 19.8% | 8,135 |
| MARCH | 27,573 | -96 | -0.3% | 19,539 | 70.9% | 2,606 | 9.5% | 5,428 | 19.7% | 8,034 |
| APRIL | 27,546 | -27 | -0.1% | 19,632 | 71.3% | 2,448 | 8.9% | 5,466 | 19.8% | 7,914 |
| MAY | 27,419 | -127 | -0.5% | 19,431 | 70.9% | 2,550 | 9.3% | 5,438 | 19.8% | 7,988 |
| JUNE | 27,325 | -94 | -0.3% | 19,462 | 71.2% | 2,465 | 9.0% | 5,398 | 19.8% | 7,863 |
| FY Average | 27,411 | 27 | 0.1% | 19,463 | 71.0% | 2,509 | 9.2% | 5,440 | 19.8% | 7,949 |

Population figures on each year summary line are monthly averages. Monthly change and percent change are calculated from the first month of the year to the last month of the year.

INCARCERATED FELON POPULATION TOTALS AT FISCAL YEAR END (JUNE 30) FY 1996/97 - FY 2007/08

| | TOTAL FELON POP. (A+B+C) | TOTAL CHANGE | PERCENT CHANGE | TDOC FACILITIES (A) | PERCENT OF TOTAL | TDOC BACKUP (B) | PERCENT OF TOTAL | LOCALLY SENTENCED (C) | PERCENT OF TOTAL | LOCAL JAIL TOTAL (B+C) |
|---------|--------------------------------|-----------------|-------------------|---------------------------|---------------------|-----------------------|---------------------|-----------------------------|---------------------|------------------------------|
| 1996-97 | 19,606 | 684 | 3.6% | 14,218 | 72.5% | 1,817 | 9.3% | 3,571 | 18.2% | 5,388 |
| 1997-98 | 21,286 | 1,680 | 8.6% | 15,640 | 73.5% | 2,103 | 9.9% | 3,543 | 16.6% | 5,646 |
| 1998-99 | 22,287 | 1,001 | 4.7% | 16,577 | 74.4% | 1,846 | 8.3% | 3,864 | 17.3% | 5,710 |
| 1999-00 | 22,539 | 252 | 1.1% | 16,824 | 74.6% | 1,957 | 8.7% | 3,758 | 16.7% | 5,715 |
| 1900-01 | 23,062 | 523 | 2.3% | 17,459 | 75.7% | 1,901 | 8.2% | 3,702 | 16.1% | 5,603 |
| 2001-02 | 24,235 | 1,173 | 5.1% | 17,715 | 73.1% | 2,505 | 10.3% | 4,015 | 16.6% | 6,520 |
| 2002-03 | 25,469 | 1,234 | 5.1% | 19,408 | 76.2% | 1,956 | 7.7% | 4,105 | 16.1% | 6,061 |
| 2003-04 | 25,865 | 396 | 1.6% | 19,408 | 75.0% | 2,110 | 8.2% | 4,347 | 16.8% | 6,457 |
| 2004-05 | 26,209 | 344 | 1.3% | 19,432 | 74.1% | 2,321 | 8.9% | 4,456 | 17.0% | 6,777 |
| 2005-06 | 26,110 | -99 | -0.4% | 19,429 | 74.4% | 1,874 | 7.2% | 4,807 | 18.4% | 6,681 |
| 2006-07 | 26,551 | 441 | 1.7% | 19,341 | 72.8% | 2,023 | 7.6% | 5,187 | 19.5% | 7,210 |
| 2007-08 | 26,998 | 447 | 1.7% | 19,497 | 72.2% | 2,204 | 8.2% | 5,297 | 19.6% | 7,501 |

INCARCERATED FELON POPULATIONS AVERAGES FY 1996/97 - FY 2007/08

| | AVG. TOTAL FELON POP. (A+B+C) | ANNUAL CHANGE | PERCENT CHANGE | TDOC FACILITIES (A) | PERCENT OF TOTAL | TDOC BACKUP (B) | PERCENT OF TOTAL | LOCALLY SENTENCED (C) | PERCENT OF TOTAL | LOCAL JAIL TOTAL (B+C) |
|---------|-------------------------------------|------------------|-------------------|---------------------------|---------------------|-----------------------|---------------------|-----------------------------|---------------------|------------------------------|
| 1996-97 | 19,163 | 469 | 2.5% | 13,815 | 72.1% | 1,904 | 9.9% | 3,444 | 18.0% | 5,348 |
| 1997-98 | 20,401 | 1,238 | 6.5% | 15,269 | 74.8% | 1,617 | 7.9% | 3,515 | 17.2% | 5,132 |
| 1998-99 | 21,632 | 1,231 | 6.0% | 15,933 | 73.7% | 1,941 | 9.0% | 3,758 | 17.4% | 5,699 |
| 1999-00 | 22,608 | 976 | 4.5% | 16,764 | 74.2% | 1,927 | 8.5% | 3,917 | 17.3% | 5,844 |
| 1900-01 | 22,625 | 17 | 0.1% | 17,140 | 75.8% | 1,742 | 7.7% | 3,743 | 16.5% | 5,485 |
| 2001-02 | 23,891 | 1,266 | 5.6% | 17,611 | 73.7% | 2,143 | 9.0% | 4,137 | 17.3% | 6,280 |
| 2002-03 | 24,913 | 1,022 | 4.3% | 18,436 | 74.0% | 2,313 | 9.3% | 4,164 | 16.7% | 6,477 |
| 2003-04 | 25,635 | 722 | 2.9% | 19,404 | 75.7% | 2,021 | 7.9% | 4,210 | 16.4% | 6,231 |
| 2004-05 | 26,036 | 401 | 1.6% | 19,431 | 74.6% | 2,180 | 8.4% | 4,425 | 17.0% | 6,605 |
| 2005-06 | 26,323 | 287 | 1.1% | 19,406 | 73.7% | 2,293 | 8.7% | 4,624 | 17.6% | 6,917 |
| 2006-07 | 26,100 | -223 | -0.8% | 19,379 | 74.2% | 1,885 | 7.2% | 4,836 | 18.5% | 6,721 |
| 2007-08 | 26,801 | 701 | 2.7% | 19,428 | 72.5% | 2,025 | 7.6% | 5,347 | 20.0% | 7,372 |

NOTE: FISCAL YEAR AVERAGES

LOCAL JAIL POPULATIONS AS OF June 30, 2009

(Source: TDOC's Jail Summary Report)

| | Total Jail Pop. | Monthly Change | % Change | Total TDOC Inmates | Local Felons | Federal & Others | Other Convicted Felons | Convicted Misdem. | Total Pre-trial Detainees | % TDOC Felons | % Local Felons | % Federal & Others | % Other Conv. Felons | % Conv. Misdem. | % Pre-trial Detainees |
|--------------------------|-----------------|----------------|----------|--------------------|--------------|------------------|------------------------|-------------------|---------------------------|---------------|----------------|--------------------|----------------------|-----------------|-----------------------|
| 2007/2008 | | | | | | | | | | | | | | | |
| JULY | 25,594 | -67 | -0.3% | 1,974 | 5,245 | 834 | 797 | 5,310 | 11,434 | 8% | 20% | 3% | 3% | 21% | 45% |
| AUGUST | 26,338 | 744 | 2.9% | 1,967 | 5,336 | 897 | 930 | 5,635 | 11,573 | 7% | 20% | 3% | 4% | 21% | 44% |
| SEPTEMBER | 26,419 | 81 | 0.3% | 2,073 | 5,308 | 878 | 872 | 5,723 | 11,565 | 8% | 20% | 3% | 3% | 22% | 44% |
| OCTOBER | 25,545 | -874 | -3.3% | 2,072 | 5,287 | 939 | 799 | 5,230 | 11,218 | 8% | 21% | 4% | 3% | 20% | 44% |
| NOVEMBER | 25,319 | -226 | -0.9% | 2,069 | 5,403 | 978 | 698 | 5,493 | 10,678 | 8% | 21% | 4% | 3% | 22% | 42% |
| DECEMBER | 23,590 | -1,729 | -6.8% | 1,910 | 5,109 | 1008 | 691 | 4,418 | 10,454 | 8% | 22% | 4% | 3% | 19% | 44% |
| JANUARY | 24,331 | 741 | 3.1% | 1,903 | 5,396 | 1013 | 628 | 5,073 | 10,318 | 8% | 22% | 4% | 3% | 21% | 42% |
| FEBRUARY | 24,409 | 78 | 0.3% | 1,922 | 5,453 | 979 | 665 | 5,408 | 9,982 | 8% | 22% | 4% | 3% | 22% | 41% |
| MARCH | 24,945 | 536 | 2.2% | 1,969 | 5,382 | 1072 | 695 | 5,155 | 10,672 | 8% | 22% | 4% | 3% | 21% | 43% |
| APRIL | 25,573 | 628 | 2.5% | 2,007 | 5,487 | 1022 | 684 | 5,262 | 11,111 | 8% | 21% | 4% | 3% | 21% | 43% |
| MAY | 26,044 | 471 | 1.8% | 2,235 | 5,460 | 1005 | 693 | 5,485 | 11,166 | 9% | 21% | 4% | 3% | 21% | 43% |
| JUNE | 26,186 | 142 | 0.5% | 2,204 | 5,297 | 1084 | 585 | 5,259 | 11,757 | 8% | 20% | 4% | 2% | 20% | 45% |
| 2007/2008 AVERAGE | 25,358 | | | 2,025 | 5,347 | 976 | 728 | 5,288 | 10,994 | 8% | 21% | 4% | 3% | 21% | 43% |

| | Total Jail Pop. | Monthly Change | % Change | Total TDOC Inmates | Local Felons | Federal & Others | Other Convicted Felons | Convicted Misdem. | Total Pre-trial Detainees | % TDOC Felons | % Local Felons | % Federal & Others | % Other Conv. Felons | % Conv. Misdem. | % Pre-trial Detainees |
|--------------------------|-----------------|----------------|----------|--------------------|--------------|------------------|------------------------|-------------------|---------------------------|---------------|----------------|--------------------|----------------------|-----------------|-----------------------|
| 2008/2009 | | | | | | | | | | | | | | | |
| JULY | 26,310 | 124 | 0.5% | 2,239 | 5,435 | 982 | 509 | 5,061 | 12,084 | 9% | 21% | 4% | 2% | 19% | 46% |
| AUGUST | 26,913 | 603 | 2.3% | 2,274 | 5,503 | 947 | 526 | 5,331 | 12,332 | 8% | 20% | 4% | 2% | 20% | 46% |
| SEPTEMBER | 26,779 | -134 | -0.5% | 2,446 | 5,565 | 931 | 526 | 5,109 | 12,202 | 9% | 21% | 3% | 2% | 19% | 46% |
| OCTOBER | 26,536 | -243 | -0.9% | 2,483 | 5,531 | 1040 | 779 | 5,124 | 11,579 | 9% | 21% | 4% | 3% | 19% | 44% |
| NOVEMBER | 26,219 | -317 | -1.2% | 2,669 | 5,469 | 1016 | 776 | 4,753 | 11,536 | 10% | 21% | 4% | 3% | 18% | 44% |
| DECEMBER | 24,778 | -1,441 | -5.5% | 2,577 | 5,283 | 955 | 708 | 4,229 | 11,026 | 10% | 21% | 4% | 3% | 17% | 44% |
| JANUARY | 26,214 | 1,436 | 5.8% | 2,705 | 5,272 | 1021 | 752 | 5,092 | 11,372 | 10% | 20% | 4% | 3% | 19% | 43% |
| FEBRUARY | 26,119 | -95 | -0.4% | 2,647 | 5,488 | 999 | 742 | 5,295 | 10,948 | 10% | 21% | 4% | 3% | 20% | 42% |
| MARCH | 26,441 | 322 | 1.2% | 2,606 | 5,428 | 1016 | 760 | 5,203 | 11,428 | 10% | 21% | 4% | 3% | 20% | 43% |
| APRIL | 26,265 | -176 | -0.7% | 2,448 | 5,466 | 942 | 717 | 5,274 | 11,418 | 9% | 21% | 4% | 3% | 20% | 43% |
| MAY | 26,898 | 633 | 2.4% | 2,550 | 5,438 | 923 | 724 | 5,636 | 11,627 | 9% | 20% | 3% | 3% | 21% | 43% |
| JUNE | 26,772 | -126 | -0.5% | 2,465 | 5,398 | 916 | 813 | 5,341 | 11,839 | 9% | 20% | 3% | 3% | 20% | 44% |
| 2008/2009 AVERAGE | 26,354 | | | 2,509 | 5,440 | 974 | 694 | 5,121 | 11,616 | 10% | 21% | 4% | 3% | 19% | 44% |

FELON ADMISSIONS IN TENNESSEE FISCAL YEAR 2008/2009

June 2009

| TOTAL ADMISSIONS | PERCENT CHANGE | NEW COMMITS | PERCENT OF TOTAL | VIOLATORS RETURNED | PERCENT OF TOTAL | ESCAPEES & OTHERS | PERCENT OF TOTAL |
|------------------|----------------|-------------|------------------|--------------------|------------------|-------------------|------------------|
|------------------|----------------|-------------|------------------|--------------------|------------------|-------------------|------------------|

2008/2009

TDOC

| | | | | | | | | |
|-----------|--------|--------|-------|-------|-------|-------|-----|------|
| JULY | 984 | | 553 | 56.2% | 414 | 42.1% | 17 | 1.7% |
| AUGUST | 960 | -2.4% | 510 | 53.1% | 435 | 45.3% | 15 | 1.6% |
| SEPTEMBER | 989 | 3.0% | 567 | 57.3% | 414 | 41.9% | 8 | 0.8% |
| OCTOBER | 944 | -4.6% | 518 | 54.9% | 419 | 44.4% | 7 | 0.7% |
| NOVEMBER | 869 | -7.9% | 520 | 59.8% | 342 | 39.4% | 7 | 0.8% |
| DECEMBER | 746 | -14.2% | 417 | 55.9% | 324 | 43.4% | 5 | 0.7% |
| JANUARY | 927 | 24.3% | 561 | 60.5% | 354 | 38.2% | 12 | 1.3% |
| FEBRUARY | 865 | -6.7% | 523 | 60.5% | 334 | 38.6% | 8 | 0.9% |
| MARCH | 842 | -2.7% | 476 | 56.5% | 354 | 42.0% | 12 | 1.4% |
| APRIL | 846 | 0.5% | 484 | 57.2% | 348 | 41.1% | 14 | 1.7% |
| MAY | 760 | -10.2% | 479 | 63.0% | 277 | 36.4% | 4 | 0.5% |
| JUNE | 565 | -25.7% | 327 | 57.9% | 233 | 41.2% | 5 | 0.9% |
| TOTAL | 10,297 | | 5,935 | 57.6% | 4,248 | 41.3% | 114 | 1.1% |

2008/2009

LOCALLY SENTENCED

| | | | | | | | | |
|-----------|-------|--------|-------|-------|-------|-------|----|------|
| JULY | 314 | | 207 | 65.9% | 107 | 34.1% | 0 | 0.0% |
| AUGUST | 299 | -4.8% | 211 | 70.6% | 85 | 28.4% | 3 | 1.0% |
| SEPTEMBER | 301 | 0.7% | 194 | 64.5% | 106 | 35.2% | 1 | 0.3% |
| OCTOBER | 279 | -7.3% | 182 | 65.2% | 97 | 34.8% | 0 | 0.0% |
| NOVEMBER | 261 | -6.5% | 184 | 70.5% | 76 | 29.1% | 1 | 0.4% |
| DECEMBER | 249 | -4.6% | 155 | 62.2% | 93 | 37.3% | 1 | 0.4% |
| JANUARY | 290 | 16.5% | 204 | 70.3% | 84 | 29.0% | 2 | 0.7% |
| FEBRUARY | 302 | 4.1% | 193 | 63.9% | 108 | 35.8% | 1 | 0.3% |
| MARCH | 279 | -7.6% | 176 | 63.1% | 101 | 36.2% | 2 | 0.7% |
| APRIL | 280 | 0.4% | 180 | 64.3% | 97 | 34.6% | 3 | 1.1% |
| MAY | 316 | 12.9% | 218 | 69.0% | 98 | 31.0% | 0 | 0.0% |
| JUNE | 205 | -35.1% | 137 | 66.8% | 67 | 32.7% | 1 | 0.5% |
| TOTAL | 3,375 | | 2,241 | 66.4% | 1,119 | 33.2% | 15 | 0.4% |

2008/2009

SYSTEM TOTAL

| | | | | | | | | |
|-----------|--------|--------|-------|-------|-------|-------|-----|------|
| JULY | 1,298 | | 760 | 58.6% | 521 | 40.1% | 17 | 1.3% |
| AUGUST | 1,259 | -3.0% | 721 | 57.3% | 520 | 41.3% | 18 | 1.4% |
| SEPTEMBER | 1,290 | 2.5% | 761 | 59.0% | 520 | 40.3% | 9 | 0.7% |
| OCTOBER | 1,223 | -5.2% | 700 | 57.2% | 516 | 42.2% | 7 | 0.6% |
| NOVEMBER | 1,130 | -7.6% | 704 | 62.3% | 418 | 37.0% | 8 | 0.7% |
| DECEMBER | 995 | -11.9% | 572 | 57.5% | 417 | 41.9% | 6 | 0.6% |
| JANUARY | 1,217 | 22.3% | 765 | 62.9% | 438 | 36.0% | 14 | 1.2% |
| FEBRUARY | 1,167 | -4.1% | 716 | 61.4% | 442 | 37.9% | 9 | 0.8% |
| MARCH | 1,121 | -3.9% | 652 | 58.2% | 455 | 40.6% | 14 | 1.2% |
| APRIL | 1,126 | 0.4% | 664 | 59.0% | 445 | 39.5% | 17 | 1.5% |
| MAY | 1,076 | -4.4% | 697 | 64.8% | 375 | 34.9% | 4 | 0.4% |
| JUNE | 770 | -28.4% | 464 | 60.3% | 300 | 39.0% | 6 | 0.8% |
| TOTAL | 13,672 | | 8,176 | 59.8% | 5,367 | 39.3% | 129 | 0.9% |

Admission statistics are incomplete because all data are not received by TDOC immediately after sentencing.

In some cases information is not received until several months after sentencing; therefore, the numbers for any given month may be different from the previous month's report.

FELON ADMISSIONS IN TENNESSEE FISCAL YEAR 2007/2008

| TOTAL ADMISSIONS | PERCENT CHANGE | NEW COMMITTS | PERCENT OF TOTAL | VIOLATORS RETURNED | PERCENT OF TOTAL | ESCAPEES & OTHERS | PERCENT OF TOTAL |
|---------------------|-------------------|-----------------|---------------------|-----------------------|---------------------|----------------------|---------------------|
|---------------------|-------------------|-----------------|---------------------|-----------------------|---------------------|----------------------|---------------------|

2007/2008

TDOC

| | | | | | | | | |
|-----------|--------|--------|-------|-------|-------|-------|-----|------|
| JULY | 990 | | 558 | 56.4% | 422 | 42.6% | 10 | 1.0% |
| AUGUST | 976 | -1.4% | 551 | 56.5% | 416 | 42.6% | 9 | 0.9% |
| SEPTEMBER | 981 | 0.5% | 559 | 57.0% | 418 | 42.6% | 4 | 0.4% |
| OCTOBER | 945 | -3.7% | 517 | 54.7% | 417 | 44.1% | 11 | 1.2% |
| NOVEMBER | 997 | 5.5% | 572 | 57.4% | 418 | 41.9% | 7 | 0.7% |
| DECEMBER | 739 | -25.9% | 441 | 59.7% | 287 | 38.8% | 11 | 1.5% |
| JANUARY | 936 | 26.7% | 532 | 56.8% | 395 | 42.2% | 9 | 1.0% |
| FEBRUARY | 950 | 1.5% | 544 | 57.3% | 400 | 42.1% | 6 | 0.6% |
| MARCH | 889 | -6.4% | 483 | 54.3% | 396 | 44.5% | 10 | 1.1% |
| APRIL | 945 | 6.3% | 548 | 58.0% | 383 | 40.5% | 14 | 1.5% |
| MAY | 956 | 1.2% | 529 | 55.3% | 410 | 42.9% | 17 | 1.8% |
| JUNE | 893 | -6.6% | 492 | 55.1% | 386 | 43.2% | 15 | 1.7% |
| TOTAL | 11,197 | | 6,326 | 56.5% | 4,748 | 42.4% | 123 | 1.1% |

2007/2008

LOCALLY SENTENCED

| | | | | | | | | |
|-----------|-------|--------|-------|-------|-------|-------|----|------|
| JULY | 280 | | 169 | 60.4% | 110 | 39.3% | 1 | 0.4% |
| AUGUST | 303 | 8.2% | 202 | 66.7% | 98 | 32.3% | 3 | 1.0% |
| SEPTEMBER | 309 | 2.0% | 195 | 63.1% | 111 | 35.9% | 3 | 1.0% |
| OCTOBER | 346 | 12.0% | 238 | 68.8% | 105 | 30.3% | 3 | 0.9% |
| NOVEMBER | 334 | -3.5% | 227 | 68.0% | 106 | 31.7% | 1 | 0.3% |
| DECEMBER | 205 | -38.6% | 155 | 75.6% | 49 | 23.9% | 1 | 0.5% |
| JANUARY | 373 | 82.0% | 256 | 68.6% | 115 | 30.8% | 2 | 0.5% |
| FEBRUARY | 289 | -22.5% | 198 | 68.5% | 88 | 30.4% | 3 | 1.0% |
| MARCH | 289 | 0.0% | 187 | 64.7% | 102 | 35.3% | 0 | 0.0% |
| APRIL | 318 | 10.0% | 225 | 70.8% | 92 | 28.9% | 1 | 0.3% |
| MAY | 327 | 2.8% | 228 | 69.7% | 98 | 30.0% | 1 | 0.3% |
| JUNE | 242 | -26.0% | 163 | 67.4% | 78 | 32.2% | 1 | 0.4% |
| TOTAL | 3,615 | | 2,443 | 67.6% | 1,152 | 31.9% | 20 | 0.6% |

2007/2008

SYSTEM TOTAL

| | | | | | | | | |
|-----------|--------|--------|-------|-------|-------|-------|-----|------|
| JULY | 1,270 | | 727 | 57.2% | 532 | 41.9% | 11 | 0.9% |
| AUGUST | 1,279 | 0.7% | 753 | 58.9% | 514 | 40.2% | 12 | 0.9% |
| SEPTEMBER | 1,290 | 0.9% | 754 | 58.4% | 529 | 41.0% | 7 | 0.5% |
| OCTOBER | 1,291 | 0.1% | 755 | 58.5% | 522 | 40.4% | 14 | 1.1% |
| NOVEMBER | 1,331 | 3.1% | 799 | 60.0% | 524 | 39.4% | 8 | 0.6% |
| DECEMBER | 944 | -29.1% | 596 | 63.1% | 336 | 35.6% | 12 | 1.3% |
| JANUARY | 1,309 | 38.7% | 788 | 60.2% | 510 | 39.0% | 11 | 0.8% |
| FEBRUARY | 1,239 | -5.3% | 742 | 59.9% | 488 | 39.4% | 9 | 0.7% |
| MARCH | 1,178 | -4.9% | 670 | 56.9% | 498 | 42.3% | 10 | 0.8% |
| APRIL | 1,263 | 7.2% | 773 | 61.2% | 475 | 37.6% | 15 | 1.2% |
| MAY | 1,283 | 1.6% | 757 | 59.0% | 508 | 39.6% | 18 | 1.4% |
| JUNE | 1,135 | -11.5% | 655 | 57.7% | 464 | 40.9% | 16 | 1.4% |
| TOTAL | 14,812 | | 8,769 | 59.2% | 5,900 | 39.8% | 143 | 1.0% |

Admission statistics are incomplete because all data are not received by TDOC immediately after sentencing. In some cases information is not received until several months after sentencing; therefore, the numbers for any given month may be different from the previous month's report.

**FELON ADMISSIONS IN TENNESSEE
FISCAL YEARS 1997/98 - 2007/08**

| TOTAL ADMISSIONS | PERCENT CHANGE | NEW COMMITS | PERCENT OF TOTAL | VIOLATORS RETURNED | PERCENT OF TOTAL | ESCAPEES & OTHERS | PERCENT OF TOTAL |
|------------------|----------------|-------------|------------------|--------------------|------------------|-------------------|------------------|
|------------------|----------------|-------------|------------------|--------------------|------------------|-------------------|------------------|

| TDOC | | | | | | | | |
|---------|--------|-------|-------|-------|-------|-------|-----|------|
| 1997-98 | 8,660 | 16.1% | 4,837 | 55.9% | 3,719 | 42.9% | 104 | 1.2% |
| 1998-99 | 8,452 | -2.4% | 4,905 | 58.0% | 3,464 | 41.0% | 83 | 1.0% |
| 1999-00 | 8,694 | 2.9% | 5,249 | 60.4% | 3,350 | 38.5% | 95 | 1.1% |
| 2000-01 | 9,037 | 3.9% | 5,381 | 59.5% | 3,514 | 38.9% | 142 | 1.6% |
| 2001-02 | 9,608 | 6.3% | 5,644 | 58.7% | 3,848 | 40.0% | 116 | 1.2% |
| 2002-03 | 9,529 | -0.8% | 5,658 | 59.4% | 3,769 | 39.6% | 102 | 1.1% |
| 2003-04 | 10,262 | 7.7% | 6,086 | 59.3% | 4,047 | 39.4% | 129 | 1.3% |
| 2004-05 | 10,417 | 1.5% | 6,027 | 57.9% | 4,275 | 41.0% | 115 | 1.1% |
| 2005-06 | 10,913 | 4.8% | 6,299 | 57.7% | 4,492 | 41.2% | 122 | 1.1% |
| 2006-07 | 11,208 | 1.5% | 6,343 | 57.9% | 4,733 | 41.0% | 132 | 1.1% |
| 2007-08 | 11,197 | -0.1% | 6,326 | 56.5% | 4,748 | 42.4% | 123 | 1.1% |

| LOCALLY SENTENCED | | | | | | | | |
|-------------------|-------|-------|-------|-------|-------|-------|----|------|
| 1997-98 | 4,941 | -3.3% | 3,447 | 69.8% | 1,434 | 29.0% | 60 | 1.2% |
| 1998-99 | 4,721 | -4.5% | 3,202 | 67.8% | 1,490 | 31.6% | 29 | 0.6% |
| 1999-00 | 4,756 | 0.7% | 3,510 | 73.8% | 1,224 | 25.7% | 22 | 0.5% |
| 2000-01 | 4,405 | -7.4% | 2,982 | 67.7% | 1,388 | 31.5% | 35 | 0.8% |
| 2001-02 | 4,022 | -8.7% | 2,693 | 67.0% | 1,307 | 32.5% | 22 | 0.5% |
| 2002-03 | 3,733 | -7.2% | 2,405 | 64.4% | 1,308 | 35.0% | 20 | 0.5% |
| 2003-04 | 3,582 | -4.0% | 2,350 | 65.6% | 1,214 | 33.9% | 18 | 0.5% |
| 2004-05 | 3,759 | 4.9% | 2,413 | 64.2% | 1,327 | 35.3% | 19 | 0.5% |
| 2005-06 | 3,638 | -3.2% | 2,321 | 64.2% | 1,296 | 35.3% | 21 | 0.5% |
| 2006-07 | 3,667 | 4.9% | 2,322 | 63.3% | 1,332 | 36.3% | 13 | 0.4% |
| 2007-08 | 3,615 | -1.4% | 2,443 | 67.6% | 1,152 | 31.9% | 20 | 0.6% |

| SYSTEM TOTAL | | | | | | | | |
|--------------|--------|-------|-------|-------|-------|-------|-----|------|
| 1997-98 | 13,601 | 4.9% | 8,284 | 60.9% | 5,153 | 37.9% | 164 | 1.2% |
| 1998-99 | 13,173 | -3.1% | 8,107 | 61.5% | 4,954 | 37.6% | 112 | 0.9% |
| 1999-00 | 13,450 | 2.1% | 8,759 | 65.1% | 4,574 | 34.0% | 117 | 0.9% |
| 2000-01 | 13,442 | -0.1% | 8,363 | 62.2% | 4,902 | 36.5% | 177 | 1.3% |
| 2001-02 | 13,630 | 1.4% | 8,337 | 61.2% | 5,155 | 37.8% | 138 | 1.0% |
| 2002-03 | 13,262 | -2.7% | 8,063 | 60.8% | 5,077 | 38.3% | 122 | 0.9% |
| 2003-04 | 13,844 | 4.4% | 8,436 | 60.9% | 5,261 | 38.0% | 147 | 1.1% |
| 2004-05 | 14,176 | 2.4% | 8,440 | 59.5% | 5,602 | 39.5% | 134 | 0.9% |
| 2005-06 | 14,551 | 2.6% | 8,620 | 59.2% | 5,788 | 39.8% | 143 | 1.0% |
| 2006-07 | 14,875 | 2.4% | 8,665 | 59.5% | 6,065 | 39.5% | 145 | 0.9% |
| 2007-08 | 14,812 | -0.4% | 8,769 | 59.2% | 5,900 | 39.8% | 143 | 1.0% |

FELON RELEASES IN TENNESSEE FISCAL YEAR 2008/2009

| | TOTAL RELEASES | PERCENT CHANGE | PAROLE | PERCENT OF TOTAL | PROBATION COM. COR. | PERCENT OF TOTAL | EXPIRATION & OTHERS | PERCENT OF TOTAL |
|--|-------------------|-------------------|--------|---------------------|------------------------|---------------------|------------------------|---------------------|
|--|-------------------|-------------------|--------|---------------------|------------------------|---------------------|------------------------|---------------------|

*TDOC

| | | | | | | | | |
|-----------|-------|--------|-------|-------|-----|-------|-------|-------|
| JULY | 500 | | 234 | 46.8% | 74 | 14.8% | 192 | 38.4% |
| AUGUST | 522 | 4.4% | 227 | 43.5% | 74 | 14.2% | 221 | 42.3% |
| SEPTEMBER | 532 | 1.9% | 269 | 50.6% | 77 | 14.5% | 186 | 35.0% |
| OCTOBER | 491 | -7.7% | 261 | 53.2% | 39 | 7.9% | 191 | 38.9% |
| NOVEMBER | 511 | 4.1% | 260 | 50.9% | 39 | 7.6% | 212 | 41.5% |
| DECEMBER | 522 | 2.2% | 284 | 54.4% | 50 | 9.6% | 188 | 36.0% |
| JANUARY | 448 | -14.2% | 213 | 47.5% | 36 | 8.0% | 199 | 44.4% |
| FEBRUARY | 501 | 11.8% | 268 | 53.5% | 39 | 7.8% | 194 | 38.7% |
| *MARCH | 600 | 19.8% | 332 | 55.3% | 55 | 9.2% | 213 | 35.5% |
| APRIL | 524 | -12.7% | 291 | 55.5% | 48 | 9.2% | 185 | 35.3% |
| MAY | 577 | 10.1% | 311 | 53.9% | 75 | 13.0% | 191 | 33.1% |
| JUNE | 555 | -3.8% | 311 | 56.0% | 70 | 12.6% | 174 | 31.4% |
| TOTAL | 6,283 | | 3,261 | 51.9% | 676 | 10.8% | 2,346 | 37.3% |

TDOC BACKUP

| | | | | | | | | |
|-----------|-------|--------|-----|-------|-------|-------|-------|-------|
| JULY | 516 | | 62 | 12.0% | 305 | 59.1% | 149 | 28.9% |
| AUGUST | 543 | 5.2% | 47 | 8.7% | 357 | 65.7% | 139 | 25.6% |
| SEPTEMBER | 492 | -9.4% | 54 | 11.0% | 296 | 60.2% | 142 | 28.9% |
| OCTOBER | 445 | -9.6% | 47 | 10.6% | 273 | 61.3% | 125 | 28.1% |
| NOVEMBER | 416 | -6.5% | 57 | 13.7% | 285 | 68.5% | 74 | 17.8% |
| DECEMBER | 567 | 36.3% | 63 | 11.1% | 294 | 51.9% | 210 | 37.0% |
| JANUARY | 439 | -22.6% | 52 | 11.8% | 269 | 61.3% | 118 | 26.9% |
| FEBRUARY | 476 | 8.4% | 75 | 15.8% | 256 | 53.8% | 145 | 30.5% |
| MARCH | 492 | 3.4% | 66 | 13.4% | 277 | 56.3% | 149 | 30.3% |
| APRIL | 482 | -2.0% | 75 | 15.6% | 269 | 55.8% | 138 | 28.6% |
| MAY | 479 | -0.6% | 93 | 19.4% | 263 | 54.9% | 123 | 25.7% |
| JUNE | 473 | -1.3% | 96 | 20.3% | 243 | 51.4% | 134 | 28.3% |
| TOTAL | 5,820 | | 787 | 13.5% | 3,387 | 58.2% | 1,646 | 28.3% |

LOCALLY SENTENCED

| | | | | | | | | |
|-----------|-------|--------|-----|-------|-------|-------|-------|-------|
| JULY | 304 | | 41 | 13.5% | 149 | 49.0% | 114 | 37.5% |
| AUGUST | 286 | -5.9% | 32 | 11.2% | 143 | 50.0% | 111 | 38.8% |
| SEPTEMBER | 313 | 9.4% | 32 | 10.2% | 153 | 48.9% | 128 | 40.9% |
| OCTOBER | 285 | -8.9% | 28 | 9.8% | 133 | 46.7% | 124 | 43.5% |
| NOVEMBER | 229 | -19.6% | 38 | 16.6% | 128 | 55.9% | 63 | 27.5% |
| DECEMBER | 380 | 65.9% | 37 | 9.7% | 155 | 40.8% | 188 | 49.5% |
| JANUARY | 255 | -32.9% | 24 | 9.4% | 122 | 47.8% | 109 | 42.7% |
| FEBRUARY | 266 | 4.3% | 24 | 9.0% | 119 | 44.7% | 123 | 46.2% |
| MARCH | 284 | 6.8% | 36 | 12.7% | 160 | 56.3% | 88 | 31.0% |
| APRIL | 262 | -7.7% | 25 | 9.5% | 121 | 46.2% | 116 | 44.3% |
| MAY | 296 | 13.0% | 43 | 14.5% | 141 | 47.6% | 112 | 37.8% |
| JUNE | 289 | -2.4% | 43 | 14.9% | 122 | 42.2% | 124 | 42.9% |
| TOTAL | 3,449 | | 403 | 11.7% | 1,646 | 47.7% | 1,400 | 40.6% |

SYSTEM TOTAL

| | | | | | | | | |
|-----------|--------|--------|-------|-------|-------|-------|-------|-------|
| JULY | 1,320 | | 337 | 25.5% | 528 | 40.0% | 455 | 34.5% |
| AUGUST | 1,351 | 2.3% | 306 | 22.6% | 574 | 42.5% | 471 | 34.9% |
| SEPTEMBER | 1,337 | -1.0% | 355 | 26.6% | 526 | 39.3% | 456 | 34.1% |
| OCTOBER | 1,221 | -8.7% | 336 | 27.5% | 445 | 36.4% | 440 | 36.0% |
| NOVEMBER | 1,156 | -5.3% | 355 | 30.7% | 452 | 39.1% | 349 | 30.2% |
| DECEMBER | 1,469 | 27.1% | 384 | 26.1% | 499 | 34.0% | 586 | 39.9% |
| JANUARY | 1,142 | -22.3% | 289 | 25.3% | 427 | 37.4% | 426 | 37.3% |
| FEBRUARY | 1,243 | 8.8% | 367 | 29.5% | 414 | 33.3% | 462 | 37.2% |
| MARCH | 1,376 | 10.7% | 434 | 31.5% | 492 | 35.8% | 450 | 32.7% |
| APRIL | 1,268 | -7.8% | 391 | 30.8% | 438 | 34.5% | 439 | 34.6% |
| MAY | 1,352 | 6.6% | 447 | 33.1% | 479 | 35.4% | 426 | 31.5% |
| JUNE | 1,317 | -2.6% | 450 | 34.2% | 435 | 33.0% | 432 | 32.8% |
| TOTAL | 15,552 | | 4,451 | 28.6% | 5,709 | 36.7% | 5,392 | 34.7% |

***Beginning with the March 2008 update, the TDOC Release numbers in this report include offenders released from TDOC after revocation of a split confinement suspension of sentence. Only figures back to FY 06/07 were adjusted. Release statistics are incomplete because all data are not received by TDOC immediately after inmates are released. Therefore, the numbers for any given month may be different from the previous month's report.**

FELON RELEASES IN TENNESSEE FISCAL YEAR 2007/2008

| | TOTAL RELEASES | PERCENT CHANGE | PAROLE | PERCENT OF TOTAL | PROBATION COM. COR. | PERCENT OF TOTAL | EXPIRATION & OTHERS | PERCENT OF TOTAL |
|--------------|-------------------|-------------------|--------|---------------------|------------------------|---------------------|------------------------|---------------------|
| *TDOC | | | | | | | | |
| JULY | 621 | | 314 | 50.6% | 68 | 11.0% | 239 | 38.5% |
| AUGUST | 671 | 8.1% | 372 | 55.4% | 65 | 9.7% | 234 | 34.9% |
| SEPTEMBER | 484 | -27.9% | 233 | 48.1% | 69 | 14.3% | 182 | 37.6% |
| OCTOBER | 543 | 12.2% | 258 | 47.5% | 99 | 18.2% | 186 | 34.3% |
| NOVEMBER | 555 | 2.2% | 261 | 47.0% | 76 | 13.7% | 218 | 39.3% |
| DECEMBER | 642 | 15.7% | 353 | 55.0% | 68 | 10.6% | 221 | 34.4% |
| JANUARY | 518 | -19.3% | 241 | 46.5% | 84 | 16.2% | 193 | 37.3% |
| FEBRUARY | 448 | -13.5% | 197 | 44.0% | 66 | 14.7% | 185 | 41.3% |
| *MARCH | 504 | 12.5% | 235 | 46.6% | 58 | 11.5% | 211 | 41.9% |
| APRIL | 547 | 8.5% | 270 | 49.4% | 59 | 10.8% | 218 | 39.9% |
| MAY | 574 | 4.9% | 265 | 46.2% | 100 | 17.4% | 209 | 36.4% |
| JUNE | 529 | -7.8% | 255 | 48.2% | 63 | 11.9% | 211 | 39.9% |
| TOTAL | 6,636 | | 3,254 | 49.0% | 875 | 13.2% | 2,507 | 37.8% |

| TDOC BACKUP | | | | | | | | |
|--------------------|-------|--------|-----|-------|-------|-------|-------|-------|
| JULY | 517 | | 51 | 9.9% | 340 | 65.8% | 126 | 24.4% |
| AUGUST | 551 | 6.6% | 52 | 9.4% | 351 | 63.7% | 148 | 26.9% |
| SEPTEMBER | 455 | -17.4% | 42 | 9.2% | 306 | 67.3% | 107 | 23.5% |
| OCTOBER | 553 | 21.5% | 57 | 10.3% | 374 | 67.6% | 122 | 22.1% |
| NOVEMBER | 538 | -2.7% | 63 | 11.7% | 347 | 64.5% | 128 | 23.8% |
| DECEMBER | 525 | -2.4% | 83 | 15.8% | 319 | 60.8% | 123 | 23.4% |
| JANUARY | 512 | -2.5% | 50 | 9.8% | 336 | 65.6% | 126 | 24.6% |
| FEBRUARY | 489 | -4.5% | 43 | 8.8% | 283 | 57.9% | 163 | 33.3% |
| MARCH | 476 | -2.7% | 42 | 8.8% | 307 | 64.5% | 127 | 26.7% |
| APRIL | 469 | -1.5% | 47 | 10.0% | 289 | 61.6% | 133 | 28.4% |
| MAY | 569 | 21.3% | 53 | 9.3% | 385 | 67.7% | 131 | 23.0% |
| JUNE | 523 | -8.1% | 59 | 11.3% | 318 | 60.8% | 146 | 27.9% |
| TOTAL | 6,177 | | 642 | 10.4% | 3,955 | 64.0% | 1,580 | 25.6% |

| LOCALLY SENTENCED | | | | | | | | |
|--------------------------|-------|--------|-----|-------|-------|-------|-------|-------|
| JULY | 267 | | 22 | 8.2% | 144 | 53.9% | 101 | 37.8% |
| AUGUST | 283 | 6.0% | 33 | 11.7% | 130 | 45.9% | 120 | 42.4% |
| SEPTEMBER | 252 | -11.0% | 23 | 9.1% | 113 | 44.8% | 116 | 46.0% |
| OCTOBER | 304 | 20.6% | 45 | 14.8% | 144 | 47.4% | 115 | 37.8% |
| NOVEMBER | 281 | -7.6% | 25 | 8.9% | 130 | 46.3% | 126 | 44.8% |
| DECEMBER | 317 | 12.8% | 41 | 12.9% | 146 | 46.1% | 130 | 41.0% |
| JANUARY | 276 | -12.9% | 29 | 10.5% | 136 | 49.3% | 111 | 40.2% |
| FEBRUARY | 318 | 15.2% | 27 | 8.5% | 164 | 51.6% | 127 | 39.9% |
| MARCH | 299 | -6.0% | 31 | 10.4% | 124 | 41.5% | 144 | 48.2% |
| APRIL | 286 | -4.3% | 33 | 11.5% | 148 | 51.7% | 105 | 36.7% |
| MAY | 321 | 12.2% | 51 | 15.9% | 165 | 51.4% | 105 | 32.7% |
| JUNE | 284 | -11.5% | 39 | 13.7% | 135 | 47.5% | 110 | 38.7% |
| TOTAL | 3,488 | | 399 | 11.4% | 1,679 | 48.1% | 1,410 | 40.4% |

| SYSTEM TOTAL | | | | | | | | |
|---------------------|--------|--------|-------|-------|-------|-------|-------|-------|
| JULY | 1,405 | | 387 | 27.5% | 552 | 39.3% | 466 | 33.2% |
| AUGUST | 1,505 | 7.1% | 457 | 30.4% | 546 | 36.3% | 502 | 33.4% |
| SEPTEMBER | 1,191 | -20.9% | 298 | 25.0% | 488 | 41.0% | 405 | 34.0% |
| OCTOBER | 1,400 | 17.5% | 360 | 25.7% | 617 | 44.1% | 423 | 30.2% |
| NOVEMBER | 1,374 | -1.9% | 349 | 25.4% | 553 | 40.2% | 472 | 34.4% |
| DECEMBER | 1,484 | 8.0% | 477 | 32.1% | 533 | 35.9% | 474 | 31.9% |
| JANUARY | 1,306 | -12.0% | 320 | 24.5% | 556 | 42.6% | 430 | 32.9% |
| FEBRUARY | 1,255 | -3.9% | 267 | 21.3% | 513 | 40.9% | 475 | 37.8% |
| MARCH | 1,279 | 1.9% | 308 | 24.1% | 489 | 38.2% | 482 | 37.7% |
| APRIL | 1,302 | 1.8% | 350 | 26.9% | 496 | 38.1% | 456 | 35.0% |
| MAY | 1,464 | 12.4% | 369 | 25.2% | 650 | 44.4% | 445 | 30.4% |
| JUNE | 1,336 | -8.7% | 353 | 26.4% | 516 | 38.6% | 467 | 35.0% |
| TOTAL | 16,301 | | 4,295 | 26.3% | 6,509 | 39.9% | 5,497 | 33.7% |

***Beginning with the March 2008 update, the TDOC Release numbers in this report include offenders released from TDOC after revocation of a split confinement suspension of sentence. Only figures back to FY 06/07 were adjusted.**

Release statistics are incomplete because all data are not received by TDOC immediately after inmates are released.

Therefore, the numbers for any given month may be different from the previous month's report.

FELON RELEASES IN TENNESSEE FISCAL YEARS 1997/98 - 2007/08

| | TOTAL RELEASES | PERCENT CHANGE | PAROLE | PERCENT OF TOTAL | PROBATION COM. COR. | PERCENT OF TOTAL | EXPIRATION & OTHERS | PERCENT OF TOTAL |
|--|----------------|----------------|--------|------------------|---------------------|------------------|---------------------|------------------|
|--|----------------|----------------|--------|------------------|---------------------|------------------|---------------------|------------------|

TDOC

| | | | | | | | | |
|---------|-------|-------|-------|-------|-----|-------|-------|-------|
| 1997-98 | 4,216 | 0.0% | 2,295 | 65.7% | 563 | 8.6% | 1,358 | 25.7% |
| 1998-99 | 4,241 | 0.6% | 2,270 | 53.5% | 444 | 10.5% | 1,527 | 36.0% |
| 1999-00 | 4,691 | 10.6% | 2,548 | 54.3% | 506 | 10.8% | 1,637 | 34.9% |
| 2000-01 | 5,032 | 7.3% | 2,727 | 54.2% | 568 | 11.3% | 1,737 | 34.5% |
| 2001-02 | 4,553 | -9.5% | 2,224 | 48.8% | 514 | 11.3% | 1,815 | 39.9% |
| 2002-03 | 4,842 | 6.3% | 2,262 | 46.7% | 603 | 12.5% | 1,977 | 40.8% |
| 2003-04 | 5,493 | 13.4% | 2,552 | 46.5% | 698 | 12.7% | 2,243 | 40.8% |
| 2004-05 | 5,804 | 5.7% | 2,767 | 47.7% | 709 | 12.2% | 2,328 | 40.1% |
| 2005-06 | 6,146 | 5.9% | 3,152 | 51.3% | 756 | 12.3% | 2,238 | 36.4% |
| 2006-07 | 6,882 | 12.0% | 3,453 | 50.2% | 892 | 13.0% | 2,537 | 36.9% |
| 2007-08 | 6,636 | -3.6% | 3,254 | 49.0% | 875 | 13.2% | 2,507 | 37.8% |

TDOC BACKUP

| | | | | | | | | |
|---------|-------|-------|-----|-------|-------|-------|-------|-------|
| 1997-98 | 3,873 | 39.4% | 479 | 21.0% | 2,582 | 58.7% | 812 | 20.3% |
| 1998-99 | 4,044 | 4.4% | 484 | 12.0% | 2,516 | 62.2% | 1,044 | 25.8% |
| 1999-00 | 3,933 | -2.7% | 546 | 13.9% | 2,315 | 58.9% | 1,072 | 27.3% |
| 2000-01 | 3,917 | -0.4% | 486 | 12.4% | 2,402 | 61.3% | 1,029 | 26.3% |
| 2001-02 | 4,212 | 7.5% | 392 | 9.3% | 2,677 | 63.6% | 1,143 | 27.1% |
| 2002-03 | 4,539 | 7.8% | 423 | 9.3% | 2,884 | 63.5% | 1,232 | 27.1% |
| 2003-04 | 4,788 | 5.5% | 409 | 8.5% | 3,150 | 65.8% | 1,229 | 25.7% |
| 2004-05 | 5,235 | 9.3% | 485 | 9.3% | 3,349 | 64.0% | 1,401 | 26.8% |
| 2005-06 | 5,913 | 13.0% | 577 | 9.8% | 3,721 | 62.9% | 1,615 | 27.3% |
| 2006-07 | 5,874 | -0.7% | 594 | 10.1% | 3,804 | 64.8% | 1,476 | 25.1% |
| 2007-08 | 6,177 | 5.2% | 642 | 10.4% | 3,955 | 64.0% | 1,580 | 25.6% |

LOCALLY SENTENCED

| | | | | | | | | |
|---------|-------|-------|-----|-------|-------|-------|-------|-------|
| 1997-98 | 4,535 | 12.2% | 591 | 17.3% | 2,412 | 49.5% | 1,532 | 33.2% |
| 1998-99 | 4,546 | 0.2% | 558 | 12.3% | 2,326 | 51.2% | 1,662 | 36.6% |
| 1999-00 | 4,365 | -4.0% | 610 | 14.0% | 2,076 | 47.6% | 1,679 | 38.5% |
| 2000-01 | 3,998 | -8.4% | 550 | 13.8% | 1,983 | 49.6% | 1,465 | 36.6% |
| 2001-02 | 3,810 | -4.7% | 387 | 10.2% | 1,909 | 50.1% | 1,514 | 39.7% |
| 2002-03 | 3,509 | -7.9% | 266 | 7.6% | 1,760 | 50.2% | 1,483 | 42.3% |
| 2003-04 | 3,311 | -5.6% | 247 | 7.5% | 1,601 | 48.4% | 1,463 | 44.2% |
| 2004-05 | 3,337 | 0.8% | 272 | 8.2% | 1,681 | 50.4% | 1,384 | 41.5% |
| 2005-06 | 3,544 | 6.2% | 278 | 7.8% | 1,826 | 51.5% | 1,440 | 40.6% |
| 2006-07 | 3,409 | -3.8% | 338 | 9.9% | 1,679 | 49.3% | 1,392 | 40.8% |
| 2007-08 | 3,488 | 2.3% | 399 | 11.4% | 1,679 | 48.1% | 1,410 | 40.4% |

SYSTEM TOTAL

| | | | | | | | | |
|---------|--------|-------|-------|-------|-------|-------|-------|-------|
| 1997-98 | 12,624 | 18.7% | 3,365 | 31.7% | 5,557 | 40.1% | 3,702 | 28.1% |
| 1998-99 | 12,831 | 1.6% | 3,312 | 25.8% | 5,286 | 41.2% | 4,233 | 33.0% |
| 1999-00 | 12,989 | 1.2% | 3,704 | 28.5% | 4,897 | 37.7% | 4,388 | 33.8% |
| 2000-01 | 12,947 | -0.3% | 3,763 | 29.1% | 4,953 | 38.3% | 4,231 | 32.7% |
| 2001-02 | 12,575 | -2.9% | 3,003 | 23.9% | 5,100 | 40.6% | 4,472 | 35.6% |
| 2002-03 | 12,890 | 2.5% | 2,951 | 22.9% | 5,247 | 40.7% | 4,692 | 36.4% |
| 2003-04 | 13,592 | 5.4% | 3,208 | 23.6% | 5,449 | 40.1% | 4,935 | 36.3% |
| 2004-05 | 14,376 | 5.8% | 3,524 | 24.5% | 5,739 | 39.9% | 5,113 | 35.6% |
| 2005-06 | 15,603 | 8.5% | 4,007 | 25.7% | 6,303 | 40.4% | 5,293 | 33.9% |
| 2006-07 | 16,165 | 3.6% | 4,385 | 27.1% | 6,375 | 39.4% | 5,405 | 33.4% |
| 2007-08 | 16,301 | 0.8% | 4,295 | 26.3% | 6,509 | 39.9% | 5,497 | 33.7% |

PROJECTED FELON ADMISSIONS VS. ACTUAL
June 2009
(Projections Updated January 2008)

| FY 2007/2008 | NEW COMMITMENTS AND OTHERS | | | | PAROLE/PROBATION/COM. CORR. VIOLATORS | | | | TOTAL ADMISSIONS | | | |
|--------------|----------------------------|--------|-------|--------|---------------------------------------|--------|------|--------|------------------|--------|-------|--------|
| | PROJECTED | ACTUAL | DIFF | % DIFF | PROJECTED | ACTUAL | DIFF | % DIFF | PROJECTED | ACTUAL | DIFF | % DIFF |
| | Jul-07 | 732 | 738 | -6 | -0.8% | 516 | 532 | -16 | -3.0% | 1,248 | 1,270 | -22 |
| Aug-07 | 702 | 765 | -63 | -8.2% | 508 | 514 | -6 | -1.2% | 1,210 | 1,279 | -69 | -5.4% |
| Sep-07 | 758 | 761 | -3 | -0.4% | 498 | 529 | -31 | -5.9% | 1,256 | 1,290 | -34 | -2.6% |
| Oct-07 | 706 | 769 | -63 | -8.2% | 515 | 522 | -7 | -1.3% | 1,221 | 1,291 | -70 | -5.4% |
| Nov-07 | 697 | 807 | -110 | -13.6% | 469 | 524 | -55 | -10.5% | 1,166 | 1,331 | -165 | -12.4% |
| Dec-07 | 671 | 608 | 63 | 10.4% | 436 | 336 | 100 | 29.8% | 1,107 | 944 | 163 | 17.3% |
| Jan-08 | 727 | 799 | -72 | -9.0% | 490 | 510 | -20 | -3.9% | 1,217 | 1,309 | -92 | -7.0% |
| Feb-08 | 705 | 751 | -46 | -6.1% | 491 | 488 | 3 | 0.6% | 1,196 | 1,239 | -43 | -3.5% |
| Mar-08 | 668 | 680 | -12 | -1.8% | 513 | 498 | 15 | 3.0% | 1,181 | 1,178 | 3 | 0.3% |
| Apr-08 | 643 | 788 | -145 | -18.4% | 506 | 475 | 31 | 6.5% | 1,149 | 1,263 | -114 | -9.0% |
| May-08 | 701 | 775 | -74 | -9.5% | 507 | 508 | -1 | -0.2% | 1,208 | 1,283 | -75 | -5.8% |
| Jun-08 | 664 | 671 | -7 | -1.0% | 510 | 464 | 46 | 9.9% | 1,174 | 1,135 | 39 | 3.4% |
| FY Total | 8,374 | 8,912 | -538 | -6.0% | 5,959 | 5,900 | 59 | 1.0% | 14,333 | 14,812 | -479 | -3.2% |
| FY Avg. | 697.8 | 742.7 | -44.8 | -5.6% | 496.6 | 491.7 | 4.9 | 2.0% | 1194.4 | 1234.3 | -39.9 | -2.7% |

| FY 2008/2009 | NEW COMMITMENTS AND OTHERS | | | | PAROLE/PROBATION/COM. CORR. VIOLATORS | | | | TOTAL ADMISSIONS | | | |
|--------------|----------------------------|--------|-------|--------|---------------------------------------|--------|------|--------|------------------|--------|-------|--------|
| | PROJECTED | ACTUAL | DIFF | % DIFF | PROJECTED | ACTUAL | DIFF | % DIFF | PROJECTED | ACTUAL | DIFF | % DIFF |
| | Jul-08 | 691 | 777 | -86 | -11.1% | 497 | 521 | -24 | -4.6% | 1,188 | 1,298 | -110 |
| Aug-08 | 663 | 739 | -76 | -10.3% | 512 | 520 | -8 | -1.5% | 1,175 | 1,259 | -84 | -6.7% |
| Sep-08 | 665 | 770 | -105 | -13.6% | 504 | 520 | -16 | -3.1% | 1,169 | 1,290 | -121 | -9.4% |
| Oct-08 | 650 | 707 | -57 | -8.1% | 521 | 516 | 5 | 1.0% | 1,171 | 1,223 | -52 | -4.3% |
| Nov-08 | 636 | 712 | -76 | -10.7% | 515 | 418 | 97 | 23.2% | 1,151 | 1,130 | 21 | 1.9% |
| Dec-08 | 732 | 578 | 154 | 26.6% | 493 | 417 | 76 | 18.2% | 1,225 | 995 | 230 | 23.1% |
| Jan-09 | 671 | 779 | -108 | -13.9% | 541 | 438 | 103 | 23.5% | 1,212 | 1,217 | -5 | -0.4% |
| Feb-09 | 705 | 725 | -20 | -2.8% | 493 | 442 | 51 | 11.5% | 1,198 | 1,167 | 31 | 2.7% |
| Mar-09 | 655 | 666 | -11 | -1.7% | 494 | 455 | 39 | 8.6% | 1,149 | 1,121 | 28 | 2.5% |
| Apr-09 | 623 | 681 | -58 | -8.5% | 513 | 445 | 68 | 15.3% | 1,136 | 1,126 | 10 | 0.9% |
| May-09 | 636 | 701 | -65 | -9.3% | 523 | 375 | 148 | 39.5% | 1,159 | 1,076 | 83 | 7.7% |
| Jun-09 | 628 | 470 | 158 | 33.6% | 522 | 300 | 222 | 74.0% | 1,150 | 770 | 380 | 49.4% |
| FY Total | 7,955 | 8,305 | N/A* | N/A* | 6,128 | 5,367 | N/A* | N/A* | 14,083 | 13,672 | N/A* | N/A* |
| FY Avg. | 662.9 | 692.1 | -29.2 | -2.5% | 510.7 | 447.3 | 63.4 | 17.1% | 1,174 | 1,139 | 34 | 4.9% |

These tables compare the accuracy of the projection model by comparing projected admissions to actual admissions. Months in which the projected admissions are less than actual admissions will be represented with a negative sign.

NOTE: The last three months of actual numbers may change due to the time delay in data entry. It takes approximately 3 to 4 months for all data in any given month to accumulate or "top out".

PROJECTED FELON RELEASES VS. ACTUAL

June 2009

(Projections Updated January 2008)

| | PAROLEES | | | | PROBATIONERS & COMMUNITY CORRECTIONS | | | | DISCHARGES & OTHERS | | | | TOTAL RELEASES | | | |
|------------------|-----------|--------|------|--------|---|--------|-------|--------|------------------------|--------|-------|--------|----------------|--------|-------|--------|
| | PROJECTED | ACTUAL | DIFF | % DIFF | PROJECTED | ACTUAL | DIFF | % DIFF | PROJECTED | ACTUAL | DIFF | % DIFF | PROJECTED | ACTUAL | DIFF | % DIFF |
| 2007/2008 | | | | | | | | | | | | | | | | |
| Jul-07 | 357 | 387 | -30 | -7.8% | 525 | 552 | -27 | -4.9% | 458 | 466 | -8 | -1.7% | 1,340 | 1,405 | -65 | -4.6% |
| Aug-07 | 373 | 457 | -84 | -18.4% | 465 | 546 | -81 | -14.8% | 442 | 502 | -60 | -12.0% | 1,280 | 1,505 | -225 | -15.0% |
| Sep-07 | 403 | 298 | 105 | 35.2% | 576 | 488 | 88 | 18.0% | 423 | 405 | 18 | 4.4% | 1,402 | 1,191 | 211 | 17.7% |
| Oct-07 | 401 | 360 | 41 | 11.4% | 522 | 617 | -95 | -15.4% | 427 | 423 | 4 | 0.9% | 1,350 | 1,400 | -50 | -3.6% |
| Nov-07 | 379 | 349 | 30 | 8.6% | 508 | 553 | -45 | -8.1% | 487 | 472 | 15 | 3.2% | 1,374 | 1,374 | 0 | 0.0% |
| Dec-07 | 409 | 477 | -68 | -14.3% | 487 | 533 | -46 | -8.6% | 439 | 474 | -35 | -7.4% | 1,335 | 1,484 | -149 | -10.0% |
| Jan-08 | 416 | 320 | 96 | 30.0% | 505 | 556 | -51 | -9.2% | 436 | 430 | 6 | 1.4% | 1,357 | 1,306 | 51 | 3.9% |
| Feb-08 | 350 | 267 | 83 | 31.1% | 522 | 513 | 9 | 1.8% | 458 | 475 | -17 | -3.6% | 1,330 | 1,255 | 75 | 6.0% |
| Mar-08 | 383 | 308 | 75 | 24.4% | 518 | 489 | 29 | 5.9% | 478 | 482 | -4 | -0.8% | 1,379 | 1,279 | 100 | 7.8% |
| Apr-08 | 411 | 350 | 61 | 17.4% | 482 | 496 | -14 | -2.8% | 442 | 456 | -14 | -3.1% | 1,335 | 1,302 | 33 | 2.5% |
| May-08 | 319 | 369 | -50 | -13.6% | 497 | 650 | -153 | -23.5% | 457 | 445 | 12 | 2.7% | 1,273 | 1,464 | -191 | -13.0% |
| Jun-08 | 406 | 353 | 53 | 15.0% | 496 | 516 | -20 | -3.9% | 416 | 467 | -51 | -10.9% | 1,318 | 1,336 | -18 | -1.3% |
| FY Total | 4,607 | 4,295 | 312 | 7.3% | 6,103 | 6,509 | -406 | -6.2% | 5,363 | 5,497 | -134 | -2.4% | 16,073 | 16,301 | -228 | -1.4% |
| FY Avg. | 383.9 | 357.9 | 26.0 | 9.9% | 508.6 | 542.4 | -33.8 | -5.5% | 446.9 | 458.1 | -11.2 | -2.2% | 1,339.4 | 1,358 | -19.0 | -0.8% |

| | PAROLEES | | | | PROBATIONERS & COMMUNITY CORRECTIONS | | | | DISCHARGES & OTHERS | | | | TOTAL RELEASES | | | |
|------------------|-----------|--------|------|--------|---|--------|------|--------|------------------------|--------|------|--------|----------------|--------|------|--------|
| | PROJECTED | ACTUAL | DIFF | % DIFF | PROJECTED | ACTUAL | DIFF | % DIFF | PROJECTED | ACTUAL | DIFF | % DIFF | PROJECTED | ACTUAL | DIFF | % DIFF |
| 2008/2009 | | | | | | | | | | | | | | | | |
| Jul-08 | 364 | 337 | 27 | 8.0% | 517 | 528 | -11 | -2.1% | 427 | 455 | -28 | -6.2% | 1,308 | 1,320 | -12 | -0.9% |
| Aug-08 | 389 | 306 | 83 | 27.1% | 530 | 574 | -44 | -7.7% | 430 | 471 | -41 | -8.7% | 1,349 | 1,351 | -2 | -0.1% |
| Sep-08 | 385 | 355 | 30 | 8.5% | 485 | 526 | -41 | -7.8% | 485 | 456 | 29 | 6.4% | 1,355 | 1,337 | 18 | 1.3% |
| Oct-08 | 362 | 336 | 26 | 7.7% | 516 | 445 | 71 | 16.0% | 456 | 440 | 16 | 3.6% | 1,334 | 1,221 | 113 | 9.3% |
| Nov-08 | 367 | 355 | 12 | 3.4% | 563 | 452 | 111 | 24.6% | 463 | 349 | 114 | 32.7% | 1,393 | 1,156 | 237 | 20.5% |
| Dec-08 | 390 | 384 | 6 | 1.6% | 486 | 499 | -13 | -2.6% | 486 | 586 | -100 | -17.1% | 1,362 | 1,469 | -107 | -7.3% |
| Jan-09 | 356 | 289 | 67 | 23.2% | 499 | 427 | 72 | 16.9% | 476 | 426 | 50 | 11.7% | 1,331 | 1,142 | 189 | 16.5% |
| Feb-09 | 349 | 367 | -18 | -4.9% | 503 | 414 | 89 | 21.5% | 451 | 462 | -11 | -2.4% | 1,303 | 1,243 | 60 | 4.8% |
| Mar-09 | 380 | 434 | -54 | -12.4% | 518 | 492 | 26 | 5.3% | 473 | 450 | 23 | 5.1% | 1,371 | 1,376 | -5 | -0.4% |
| Apr-09 | 407 | 391 | 16 | 4.1% | 521 | 438 | 83 | 18.9% | 441 | 439 | 2 | 0.5% | 1,369 | 1,268 | 101 | 8.0% |
| May-09 | 397 | 447 | -50 | -11.2% | 490 | 479 | 11 | 2.3% | 460 | 426 | 34 | 8.0% | 1,347 | 1,352 | -5 | -0.4% |
| Jun-09 | 406 | 450 | -44 | -9.8% | 491 | 435 | 56 | 12.9% | 451 | 432 | 19 | 4.4% | 1,348 | 1,317 | 31 | 2.4% |
| FY Total | 4,552 | 4,451 | N/A* | N/A* | 6,119 | 5,709 | N/A* | N/A* | 5,499 | 5,392 | N/A* | N/A* | 16,170 | 15,552 | N/A* | N/A* |
| FY Avg. | 379.3 | 370.9 | 8.4 | 3.8% | 509.9 | 475.8 | 34.2 | 8.2% | 458.3 | 449.3 | 8.9 | 3.2% | 1,347.5 | 1,296 | 51.5 | 4.5% |

These tables compare the accuracy of the projection model by comparing projected releases to actual releases. Months in which the projected releases were less than actual releases will be represented with a negative sign.

NOTE: The last three months of actual numbers may change due to the time delay in data entry. It takes approximately 3 to 4 months for all data in any given month to accumulate or "top out".

**COMMUNITY SERVICES POPULATION
as of June 2009**

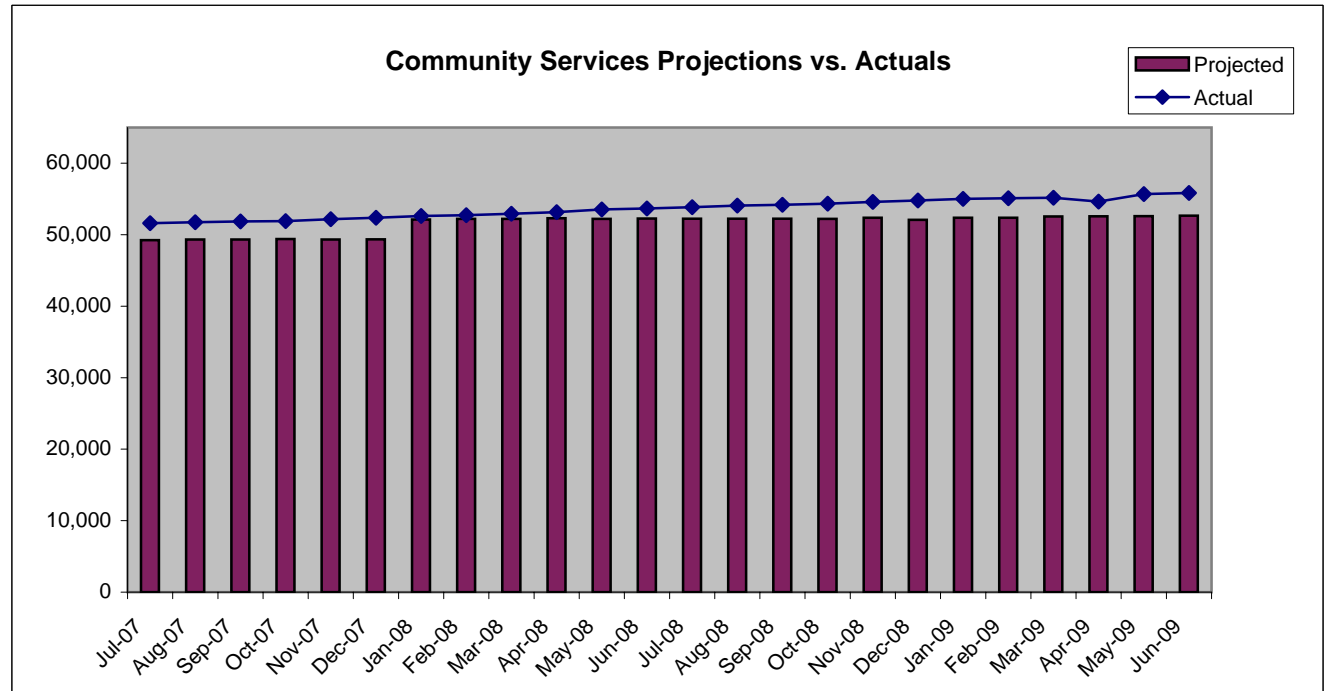
| | Community Services Total | Monthly Percent Change | Regular Probation | Percent of Total | Intensive Probation | Percent of Total | Community Corrections | Percent of Total |
|-------------------|--------------------------|------------------------|-------------------|------------------|---------------------|------------------|-----------------------|------------------|
| FY AVERAGE | | | | | | | | |
| 2002/2003 | 42,043 | 0.2% | 35,346 | 84.1% | 982 | 2.3% | 5,715 | 13.6% |
| 2003/2004 | 43,417 | 0.4% | 36,582 | 84.3% | 1,010 | 2.3% | 5,825 | 13.4% |
| 2004/2005 | 46,140 | 0.8% | 39,173 | 84.9% | 1,010 | 2.2% | 5,957 | 12.9% |
| 2005/2006 | 47,529 | 0.2% | 40,308 | 84.8% | 988 | 2.1% | 6,234 | 13.1% |
| 2006/2007 | 51,047 | 0.0% | 43,605 | 85.4% | 931 | 1.8% | 6,511 | 12.8% |
| 2007/2008 | | | | | | | | |
| July | 52,521 | 0.3% | 44,985 | 85.7% | 915 | 1.7% | 6,621 | 12.6% |
| August | 52,636 | 0.2% | 45,180 | 85.8% | 891 | 1.7% | 6,565 | 12.5% |
| September | 52,785 | 0.3% | 45,244 | 85.7% | 928 | 1.8% | 6,613 | 12.5% |
| October | 52,861 | 0.1% | 45,232 | 85.6% | 956 | 1.8% | 6,673 | 12.6% |
| November | 53,158 | 0.6% | 45,456 | 85.5% | 990 | 1.9% | 6,712 | 12.6% |
| December | 53,386 | 0.4% | 45,652 | 85.5% | 999 | 1.9% | 6,735 | 12.6% |
| January | 53,660 | 0.5% | 45,864 | 85.5% | 1,029 | 1.9% | 6,767 | 12.6% |
| February | 53,731 | 0.1% | 45,957 | 85.5% | 1,006 | 1.9% | 6,768 | 12.6% |
| March | 53,950 | 0.4% | 46,080 | 85.4% | 1,012 | 1.9% | 6,858 | 12.7% |
| April | 54,147 | 0.4% | 46,318 | 85.5% | 993 | 1.8% | 6,836 | 12.6% |
| May | 54,517 | 0.7% | 46,685 | 85.6% | 985 | 1.8% | 6,847 | 12.6% |
| June | 54,677 | 0.3% | 46,853 | 85.7% | 997 | 1.8% | 6,827 | 12.5% |
| FY Average | 53,502 | 0.4% | 45,792 | 85.6% | 975 | 1.8% | 6,735 | 12.6% |

| | Community Services Total | Monthly Percent Change | Regular Probation | Percent of Total | Intensive Probation | Percent of Total | Community Corrections | Percent of Total |
|-------------------|--------------------------|------------------------|-------------------|------------------|---------------------|------------------|-----------------------|------------------|
| 2008/2009 | | | | | | | | |
| July | 54,827 | 0.3% | 47,031 | 85.8% | 983 | 1.8% | 6,813 | 12.4% |
| August | 55,079 | 0.5% | 47,221 | 85.7% | 1,006 | 1.8% | 6,852 | 12.4% |
| September | 55,222 | 0.3% | 47,320 | 85.7% | 1,028 | 1.9% | 6,874 | 12.4% |
| October | 55,315 | 0.2% | 47,504 | 85.9% | 972 | 1.8% | 6,839 | 12.4% |
| November | 55,570 | 0.5% | 47,716 | 85.9% | 983 | 1.8% | 6,871 | 12.4% |
| December | 55,836 | 0.5% | 47,933 | 85.8% | 1,007 | 1.8% | 6,896 | 12.4% |
| January | 56,022 | 0.3% | 48,085 | 85.8% | 1,007 | 1.8% | 6,930 | 12.4% |
| February | 56,080 | 0.1% | 48,218 | 86.0% | 975 | 1.7% | 6,887 | 12.3% |
| March | 56,097 | 0.0% | 48,342 | 86.2% | 918 | 1.6% | 6,837 | 12.2% |
| April | 56,508 | 0.7% | 48,633 | 86.1% | 931 | 1.6% | 6,944 | 12.3% |
| May | 56,618 | 0.2% | 48,739 | 86.1% | 928 | 1.6% | 6,951 | 12.3% |
| June | 56,779 | 0.3% | 48,924 | 86.2% | 930 | 1.6% | 6,925 | 12.2% |
| FY Average | 55,829 | 0.3% | 47,972 | 85.9% | 972 | 1.7% | 6,885 | 12.3% |

Population figures on each year-end summary line are monthly averages. Percent change is calculated from the first month of the year to the last month of the year.

COMMUNITY SERVICES PROJECTIONS VS. ACTUAL June 2009

| | Projected | Actual | DIFF | % DIFF |
|--------|-----------|--------|--------|--------|
| Jun-06 | 47,477 | 48,159 | -682 | -1.4% |
| Jul-06 | 47,584 | 48,405 | -821 | -1.7% |
| Aug-06 | 47,727 | 48,719 | -992 | -2.0% |
| Sep-06 | 47,892 | 49,134 | -1,242 | -2.5% |
| Oct-06 | 47,987 | 49,520 | -1,533 | -3.1% |
| Nov-06 | 48,088 | 49,983 | -1,895 | -3.8% |
| Dec-06 | 48,162 | 50,024 | -1,862 | -3.7% |
| Jan-07 | 49,163 | 50,390 | -1,227 | -2.4% |
| Feb-07 | 49,208 | 50,675 | -1,467 | -2.9% |
| Mar-07 | 49,177 | 50,814 | -1,637 | -3.2% |
| Apr-07 | 49,219 | 51,059 | -1,840 | -3.6% |
| May-07 | 49,223 | 51,228 | -2,005 | -3.9% |
| Jun-07 | 49,232 | 51,441 | -2,209 | -4.3% |
| Jul-07 | 49,241 | 51,606 | -2,365 | -4.6% |
| Aug-07 | 49,322 | 51,745 | -2,423 | -4.7% |
| Sep-07 | 49,325 | 51,857 | -2,532 | -4.9% |
| Oct-07 | 49,403 | 51,905 | -2,502 | -4.8% |
| Nov-07 | 49,321 | 52,168 | -2,847 | -5.5% |
| Dec-07 | 49,360 | 52,387 | -3,027 | -5.8% |
| Jan-08 | 52,135 | 52,631 | -496 | -0.9% |
| Feb-08 | 52,221 | 52,725 | -504 | -1.0% |
| Mar-08 | 52,224 | 52,938 | -714 | -1.3% |
| Apr-08 | 52,306 | 53,154 | -848 | -1.6% |
| May-08 | 52,219 | 53,532 | -1,313 | -2.5% |
| Jun-08 | 52,260 | 53,680 | -1,420 | -2.6% |
| Jul-08 | 52,238 | 53,844 | -1,606 | -3.0% |
| Aug-08 | 52,249 | 54,073 | -1,824 | -3.4% |
| Sep-08 | 52,245 | 54,194 | -1,949 | -3.6% |
| Oct-08 | 52,221 | 54,343 | -2,122 | -3.9% |
| Nov-08 | 52,379 | 54,587 | -2,208 | -4.0% |
| Dec-08 | 52,086 | 54,791 | -2,705 | -4.9% |
| Jan-09 | 52,378 | 55,015 | -2,637 | -4.8% |
| Feb-09 | 52,384 | 55,105 | -2,721 | -4.9% |
| Mar-09 | 52,545 | 55,179 | -2,634 | -4.8% |
| Apr-09 | 52,582 | 54,646 | -2,064 | -3.8% |
| May-09 | 52,599 | 55,690 | -3,091 | -5.6% |
| Jun-09 | 52,656 | 55,849 | -3,193 | -5.7% |



***NOTE:** This chart *ONLY* includes projected population totals for Community Corrections and Regular Probation.

COMMUNITY SERVICES POPULATION FY END (JUNE 30) FY 1996/97 - FY 2007/08

| | TOTAL COM.SRV.POP | TOTAL CHANGE | REGULAR PROBATION | PERCENT OF TOTAL | INTENSIVE PROBATION | PERCENT OF TOTAL | COMM. CORR. | PERCENT OF TOTAL |
|---------|----------------------|-----------------|----------------------|---------------------|------------------------|---------------------|----------------|---------------------|
| 1996-97 | 32,051 | 0.0% | 26,333 | 82.2% | 1,786 | 5.6% | 3,932 | 12.3% |
| 1997-98 | 34,076 | 6.3% | 28,432 | 83.4% | 1,788 | 5.2% | 3,856 | 11.3% |
| 1998-99 | 36,748 | 7.8% | 30,804 | 83.8% | 1,644 | 4.5% | 4,300 | 11.7% |
| 1999-00 | 36,533 | -0.6% | 30,160 | 82.6% | 1,657 | 4.5% | 4,716 | 12.9% |
| 2000-01 | 38,075 | 4.2% | 31,458 | 82.6% | 1,751 | 4.6% | 4,866 | 12.8% |
| 2001-02 | 41,652 | 9.4% | 35,097 | 84.3% | 975 | 2.3% | 5,580 | 13.4% |
| 2002-03 | 42,388 | 1.8% | 35,636 | 84.1% | 975 | 2.3% | 5,777 | 13.6% |
| 2003-04 | 44,476 | 4.9% | 37,617 | 84.6% | 1,067 | 2.4% | 5,792 | 13.0% |
| 2004-05 | 48,984 | 10.1% | 41,950 | 85.6% | 965 | 2.0% | 6,069 | 12.4% |
| 2005-06 | 49,126 | 0.3% | 41,763 | 85.0% | 967 | 2.0% | 6,396 | 13.0% |
| 2006-07 | 52,345 | 6.6% | 44,837 | 85.7% | 904 | 1.7% | 6,604 | 12.6% |
| 2007-08 | 54,677 | 4.5% | 46,853 | 85.7% | 997 | 1.8% | 6,827 | 12.5% |

COMMUNITY SERVICES POPULATION AVERAGES FY 1996/97 - FY 2007/08

| | AVG. TOTAL COM.SRV.POP | ANNUAL CHANGE | REGULAR PROBATION | PERCENT OF TOTAL | INTENSIVE PROBATION | PERCENT OF TOTAL | COMM. CORR. | PERCENT OF TOTAL |
|---------|---------------------------|------------------|----------------------|---------------------|------------------------|---------------------|----------------|---------------------|
| 1996-97 | 31,361 | 0.0% | 25,843 | 82.4% | 1,819 | 5.8% | 3,699 | 11.8% |
| 1997-98 | 33,007 | 5.2% | 27,365 | 82.9% | 1,772 | 5.4% | 3,870 | 11.7% |
| 1998-99 | 34,837 | 5.5% | 29,016 | 83.3% | 1,757 | 5.0% | 4,064 | 11.7% |
| 1999-00 | 35,772 | 2.7% | 29,583 | 82.7% | 1,624 | 4.5% | 4,565 | 12.8% |
| 2000-01 | 37,529 | 4.9% | 31,068 | 82.8% | 1,725 | 4.6% | 4,736 | 12.6% |
| 2001-02 | 40,149 | 7.0% | 33,812 | 84.2% | 1,053 | 2.6% | 5,284 | 13.2% |
| 2002-03 | 42,043 | 4.7% | 35,346 | 84.1% | 982 | 2.3% | 5,715 | 13.6% |
| 2003-04 | 43,417 | 3.3% | 36,582 | 84.3% | 1,010 | 2.3% | 5,825 | 13.4% |
| 2004-05 | 46,140 | 6.3% | 39,173 | 84.9% | 1,010 | 2.2% | 5,957 | 12.9% |
| 2005-06 | 47,530 | 3.0% | 40,308 | 84.8% | 988 | 2.1% | 6,234 | 13.1% |
| 2006-07 | 51,047 | 7.4% | 43,605 | 85.4% | 931 | 1.8% | 6,511 | 12.8% |
| 2007-08 | 53,502 | 4.8% | 45,792 | 85.6% | 975 | 1.8% | 6,735 | 12.6% |

PAROLE GRANT RATES IN TENNESSEE
FISCAL YEARS 2003/04 - 2008/09
June 2009

| | TOTAL HEARINGS | PAROLE GRANTED | % OF TOTAL | PAROLE DENIED | % OF TOTAL | PAROLE DENIED/WAIVED | % OF TOTAL | CONT. | % OF TOTAL | CONT./WAIVED | % OF TOTAL |
|-------------------|----------------|----------------|------------|---------------|------------|----------------------|------------|-------|------------|--------------|------------|
| 2003/2004 | | | | | | | | | | | |
| TOTAL | 12,658 | 3,481 | 27.5% | 8,238 | 65.1% | | | 939 | 7.4% | | |
| 2004/2005 | | | | | | | | | | | |
| TOTAL | 13,023 | 3,845 | 29.5% | 7,260 | 55.7% | 8,139 | 62.5% | 866 | 6.6% | 173 | 1.3% |
| 2005/2006 | | | | | | | | | | | |
| TOTAL | 14,126 | 4,400 | 31.1% | 7,656 | 54.2% | 935 | 6.6% | 918 | 6.5% | 217 | 1.5% |
| 2006/2007* | | | | | | | | | | | |
| TOTAL | 13,985 | 4,778 | 34.2% | 7,359 | 52.6% | 793 | 5.7% | 773 | 5.5% | 282 | 2.0% |

2007/2008

| | | | | | | | | | | | |
|-----------|--------|-------|-------|-------|-------|-----|------|-----|------|-----|------|
| JULY | 1,464 | 463 | 31.6% | 798 | 54.5% | 95 | 6.5% | 83 | 5.7% | 25 | 1.7% |
| AUGUST | 1,335 | 386 | 28.9% | 747 | 56.0% | 77 | 5.8% | 99 | 7.4% | 26 | 1.9% |
| SEPTEMBER | 972 | 312 | 32.1% | 526 | 54.1% | 57 | 5.9% | 62 | 6.4% | 15 | 1.5% |
| OCTOBER | 1,373 | 411 | 29.9% | 757 | 55.1% | 99 | 7.2% | 73 | 5.3% | 33 | 2.4% |
| NOVEMBER | 1,312 | 428 | 32.6% | 684 | 52.1% | 77 | 5.9% | 92 | 7.0% | 31 | 2.4% |
| DECEMBER | 883 | 291 | 33.0% | 479 | 54.2% | 41 | 4.6% | 57 | 6.5% | 15 | 1.7% |
| JANUARY | 1,091 | 289 | 26.5% | 644 | 59.0% | 69 | 6.3% | 62 | 5.7% | 27 | 2.5% |
| FEBRUARY | 1,232 | 340 | 27.6% | 723 | 58.7% | 71 | 5.8% | 69 | 5.6% | 29 | 2.4% |
| MARCH | 1,218 | 378 | 31.0% | 693 | 56.9% | 67 | 5.5% | 61 | 5.0% | 19 | 1.6% |
| APRIL | 1,187 | 347 | 29.2% | 684 | 57.6% | 71 | 6.0% | 63 | 5.3% | 22 | 1.9% |
| MAY | 1,135 | 315 | 27.8% | 640 | 56.4% | 88 | 7.8% | 72 | 6.3% | 20 | 1.8% |
| JUNE | 1,125 | 326 | 29.0% | 631 | 56.1% | 74 | 6.6% | 79 | 7.0% | 15 | 1.3% |
| TOTAL | 14,327 | 4,286 | 29.9% | 8,006 | 55.9% | 886 | 6.2% | 872 | 6.1% | 277 | 1.9% |

2008/2009

| | | | | | | | | | | | |
|-----------|--------|-------|-------|-------|-------|-----|------|-----|------|-----|------|
| JULY | 1,145 | 341 | 29.8% | 626 | 54.7% | 70 | 6.1% | 87 | 7.6% | 21 | 1.8% |
| AUGUST | 1,182 | 375 | 31.7% | 653 | 55.2% | 64 | 5.4% | 61 | 5.2% | 29 | 2.5% |
| SEPTEMBER | 1,305 | 439 | 33.6% | 683 | 52.3% | 64 | 4.9% | 81 | 6.2% | 38 | 2.9% |
| OCTOBER | 1,384 | 429 | 31.0% | 780 | 56.4% | 68 | 4.9% | 60 | 4.3% | 47 | 3.4% |
| NOVEMBER | 928 | 311 | 33.5% | 499 | 53.8% | 50 | 5.4% | 56 | 6.0% | 12 | 1.3% |
| DECEMBER | 1,117 | 485 | 43.4% | 505 | 45.2% | 46 | 4.1% | 53 | 4.7% | 28 | 2.5% |
| JANUARY | 1,053 | 438 | 41.6% | 453 | 43.0% | 63 | 6.0% | 64 | 6.1% | 35 | 3.3% |
| FEBRUARY | 1,233 | 504 | 40.9% | 556 | 45.1% | 66 | 5.4% | 74 | 6.0% | 33 | 2.7% |
| MARCH | 1,140 | 443 | 38.9% | 531 | 46.6% | 72 | 6.3% | 69 | 6.1% | 25 | 2.2% |
| APRIL | 1,176 | 494 | 42.0% | 535 | 45.5% | 46 | 3.9% | 59 | 5.0% | 42 | 3.6% |
| MAY | 1,093 | 479 | 43.8% | 479 | 43.8% | 56 | 5.1% | 53 | 4.8% | 26 | 2.4% |
| JUNE | 1,076 | 430 | 40.0% | 523 | 48.6% | 36 | 3.3% | 55 | 5.1% | 32 | 3.0% |
| TOTAL | 13,832 | 5,168 | 37.4% | 6,823 | 49.3% | 701 | 5.1% | 772 | 5.6% | 368 | 2.7% |

*As of the May 2007 report, the denied category has been broken out into denied and denied/waived, and the continue category has been broken out into continued and continued/waived. These categories are more definitive and will ensure that TDOC and BOPP reported statistics are more consistent. Data for this breakout is not available prior to FY 2005-2006.

Parole statistics are incomplete because all data are not received by TDOC immediately after inmates are paroled. Therefore, the numbers for any given month may be different from the previous month's report

PAROLE POPULATIONS FISCAL YEARS 2003/2004 - 2008/2009

2003/2004 AVERAGE ACTIVE POPULATION 8,008
2004/2005 AVERAGE ACTIVE POPULATION 8,369
2005/2006 AVERAGE ACTIVE POPULATION 8,757

2006/2007

| | ACTIVE POPULATION | MONTHLY CHANGE | PERCENT CHANGE |
|----------------|----------------------|-------------------|-------------------|
| JULY | 9,233 | 9,233 | 0.1% |
| AUGUST | 9,374 | 141 | 0.5% |
| SEPTEMBER | 9,433 | 59 | 0.6% |
| OCTOBER | 9,530 | 97 | 1.0% |
| NOVEMBER | 9,622 | 92 | 1.0% |
| DECEMBER | 9,702 | 80 | 0.8% |
| JANUARY | 9,784 | 82 | 0.8% |
| FEBRUARY | 9,815 | 31 | 0.3% |
| MARCH | 9,850 | 35 | 0.4% |
| APRIL | 9,883 | 33 | 0.3% |
| MAY | 10,017 | 134 | 1.4% |
| JUNE | 10,163 | 146 | 1.5% |
| AVERAGE | 9,701 | | |

2007/2008

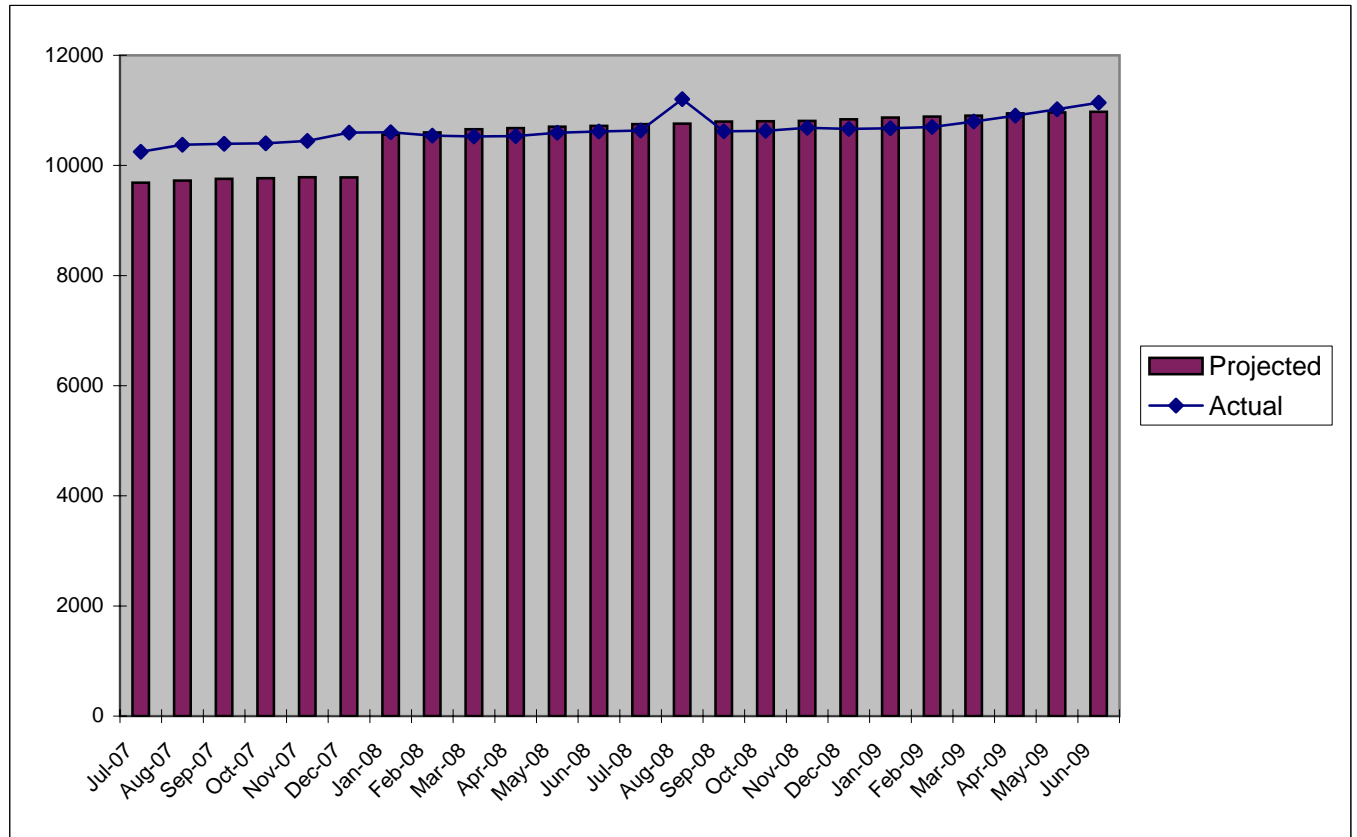
| | ACTIVE POPULATION | MONTHLY CHANGE | PERCENT CHANGE |
|----------------|----------------------|-------------------|-------------------|
| JULY | 10,249 | 86 | 0.8% |
| AUGUST | 10,377 | 128 | 1.2% |
| SEPTEMBER | 10,392 | 15 | 0.1% |
| OCTOBER | 10,402 | 10 | 0.1% |
| NOVEMBER | 10,445 | 43 | 0.4% |
| DECEMBER | 10,597 | 152 | 1.5% |
| JANUARY | 10,601 | 4 | 0.0% |
| FEBRUARY | 10,542 | -59 | -0.6% |
| MARCH | 10,527 | -15 | -0.1% |
| APRIL | 10,533 | 6 | 0.1% |
| MAY | 10,594 | 61 | 0.6% |
| JUNE | 10,617 | 23 | 0.2% |
| AVERAGE | 10,490 | | |

2008/2009

| | ACTIVE POPULATION | MONTHLY CHANGE | PERCENT CHANGE |
|----------------|----------------------|-------------------|-------------------|
| JULY | 10,634 | 17 | 0.2% |
| AUGUST | 11,205 | 571 | 5.1% |
| SEPTEMBER | 10,621 | -584 | -5.5% |
| OCTOBER | 10,630 | 9 | 0.1% |
| NOVEMBER | 10,683 | 53 | 0.5% |
| DECEMBER | 10,663 | -20 | -0.2% |
| JANUARY | 10,675 | 12 | 0.1% |
| FEBRUARY | 10,698 | 23 | 0.2% |
| MARCH | 10,796 | 98 | 0.9% |
| APRIL | 10,905 | 109 | 1.0% |
| MAY | 11,021 | 116 | 1.1% |
| JUNE | 11,139 | 118 | 1.1% |
| AVERAGE | 10,806 | | |

PAROLE POPULATION PROJECTIONS VS. ACTUAL JULY 2007 THROUGH JUNE 2009

| | Projected | Actual | Diff. | % Diff. |
|--------|-----------|--------|-------|---------|
| Jul-06 | 8810 | 9233 | -423 | -4.6% |
| Aug-06 | 8844 | 9374 | -530 | -5.7% |
| Sep-06 | 8872 | 9433 | -561 | -5.9% |
| Oct-06 | 8883 | 9530 | -647 | -6.8% |
| Nov-06 | 8899 | 9622 | -723 | -7.5% |
| Dec-06 | 8895 | 9702 | -807 | -8.3% |
| Jan-07 | 9557 | 9784 | -227 | -2.3% |
| Feb-07 | 9556 | 9815 | -259 | -2.6% |
| Mar-07 | 9560 | 9850 | -290 | -2.9% |
| Apr-07 | 9572 | 9883 | -311 | -3.1% |
| May-07 | 9629 | 10017 | -388 | -3.9% |
| Jun-07 | 9658 | 10163 | -505 | -5.0% |
| Jul-07 | 9688 | 10,249 | -561 | -5.5% |
| Aug-07 | 9726 | 10,377 | -651 | -6.3% |
| Sep-07 | 9756 | 10,392 | -636 | -6.1% |
| Oct-07 | 9768 | 10,402 | -634 | -6.1% |
| Nov-07 | 9786 | 10,445 | -659 | -6.3% |
| Dec-07 | 9782 | 10,597 | -815 | -7.7% |
| Jan-08 | 10559 | 10,601 | -42 | -0.4% |
| Feb-08 | 10600 | 10,542 | 58 | 0.6% |
| Mar-08 | 10659 | 10,527 | 132 | 1.3% |
| Apr-08 | 10677 | 10,533 | 144 | 1.4% |
| May-08 | 10703 | 10,594 | 109 | 1.0% |
| Jun-08 | 10720 | 10,617 | 103 | 1.0% |
| Jul-08 | 10751 | 10,634 | 117 | 1.1% |
| Aug-08 | 10759 | 11,205 | -446 | -4.0% |
| Sep-08 | 10797 | 10,621 | 176 | 1.7% |
| Oct-08 | 10803 | 10,630 | 173 | 1.6% |
| Nov-08 | 10808 | 10,683 | 125 | 1.2% |
| Dec-08 | 10839 | 10,663 | 176 | 1.7% |
| Jan-09 | 10871 | 10,675 | 196 | 1.8% |
| Feb-09 | 10887 | 10,698 | 189 | 1.8% |
| Mar-09 | 10905 | 10,796 | 109 | 1.0% |
| Apr-09 | 10946 | 10,905 | 41 | 0.4% |
| May-09 | 10962 | 11,021 | -59 | -0.5% |
| Jun-09 | 10973 | 11139 | -166 | -1.5% |



Projections Updated January 2008

BLUE REPORT USER'S GUIDE

Incarcerated Population

TDOC Backup: Felons sentenced to TDOC custody and held in local jails while awaiting transfer to a TDOC institution.

Locally Sentenced: Convicted felons sentenced to serve their time in a local jail. As felony offenders, these persons are under TDOC jurisdiction.

Other Convicted Felons: Convicted felons awaiting sentencing or not yet ready for transfer to TDOC because of other pending charges. Includes technical violators awaiting probable cause/revocation/recission hearing or adjudication of pending charges.

Convicted Misdemeanants: Inmates serving time because of a misdemeanor conviction.

Total Pre-Trial Detainees: Includes inmates charged with either a felony or a misdemeanor but not yet convicted.

Others: Inmates held in local facilities for federal crimes, city ordinances, etc.

Community Corrections: A grant program created in 1985 as an alternative to incarceration. Programs are developed based on the individual needs of the area served.

Admissions

New Commits: Refers to any person convicted of a felony sentenced to TDOC, but who is not on probation or parole. This may include persons who had prior incarcerations.

Violators Returned: Refers to commitment of felons on technical violations of the conditions of their parole or probation, or community correction terms.

Releases

Parole: Felons originally sentenced to an incarceration period and released to serve the remainder of their sentence under supervision.

Probation-Community Correction: Usually non-violent felons sentenced to serve a split sentence; a short jail or prison term and the remainder under state supervision.

General Notes

Backup: All offenders sentenced to TDOC custody are counted as admissions. Some offenders are held in backup at a local jail while awaiting transfer to a TDOC facility. This is due to lack of room for all offenders in TDOC facilities. Offenders in backup can be released for a number of reasons before they are transferred to TDOC. Inmates released from Backup to a TDOC facility are not counted as releases.

Primary Offense: As of July 2000, offenses are categorized according to the Tennessee Incident Based Reporting System (TIBRS) which is based on the FBI's National Incident Based Reporting System (NIBRS). This system of reporting is an attempt to standardize categorical offense reporting across criminal justice agencies. For more detail on how TCA code is categorized according to the TIBRS system, see the TBI website at <http://www.tbi.state.tn.us/tca.htm> or the TDOC Research Brief, "Assessing the Impact of the TIBRS on TDOC Criminal Offense Reporting."

Projected Felon Population-Admissions & Releases: is taken from the Annual Felon Population Projection Report. Ten year felon projections including admissions and releases are estimated every fall in order to help the TDOC in it's long term strategic planning. The current projections can be found on our website at <http://www.state.tn.us/corrections>.

Total TDOC Inmates, considered "backup" for TDOC purposes, refers to inmates sentenced to TDOC custody and held in local jails while awaiting transfer to a TDOC institution.