

Tennessee Felon Population Update

August 2009

Prepared By:

**Tennessee Department of Correction
Policy, Planning, and Research Section**

TENNESSEE FELON POPULATION UPDATE
TABLE OF CONTENTS
August 2009

Felon Population by Primary Offense Fiscal Year 2004/2005 to Present	1
Felon Population Projections vs. Actual Graph July 2006 to Present	2
Felon Inmate Population Projections vs. Actual Fiscal Year 2008/2009 to Present	3
Incarcerated Felon Population Fiscal Year 2004/2005 to Present	4
Incarcerated Felon Populations Fiscal Year 1997/1998 - 2008/2009	5
Local Jail Populations by Category Fiscal Years 2008/2009 to Present	6
Felon Admissions in Tennessee Fiscal Year 2009/2010	7
Felon Admissions in Tennessee Fiscal Year 2008/2009	8
Felon Admissions in Tennessee Fiscal Years 1998/1999 - 2008/2009	9
Felon Releases in Tennessee Fiscal Year 2009/2010	10
Felon Releases in Tennessee Fiscal Year 2008/2009	11
Felon Releases in Tennessee Fiscal Years 1998/1999 - 2008/2009	12
Projected Felon Admissions vs. Actual Fiscal Year 2008/2009 - 2009/2010	13
Projected Felon Releases Vs. Actual Fiscal Year 2008/2009 - 2009/2010	14
Community Services Population Fiscal Years 2003/2004 to Present	15
Community Services Projections Vs. Actual July 2008 to Present	16
Community Services Population Fiscal Years 1997/1998 - 2008/2009	17
Parole Grant Rates in Tennessee Fiscal Years 2004/2005 to Present	18
Parole Population Fiscal Years 2004/2005 to Present	19
Parole Population Projections vs. Actual Graph Fiscal Year 2007/2008 to Present	20

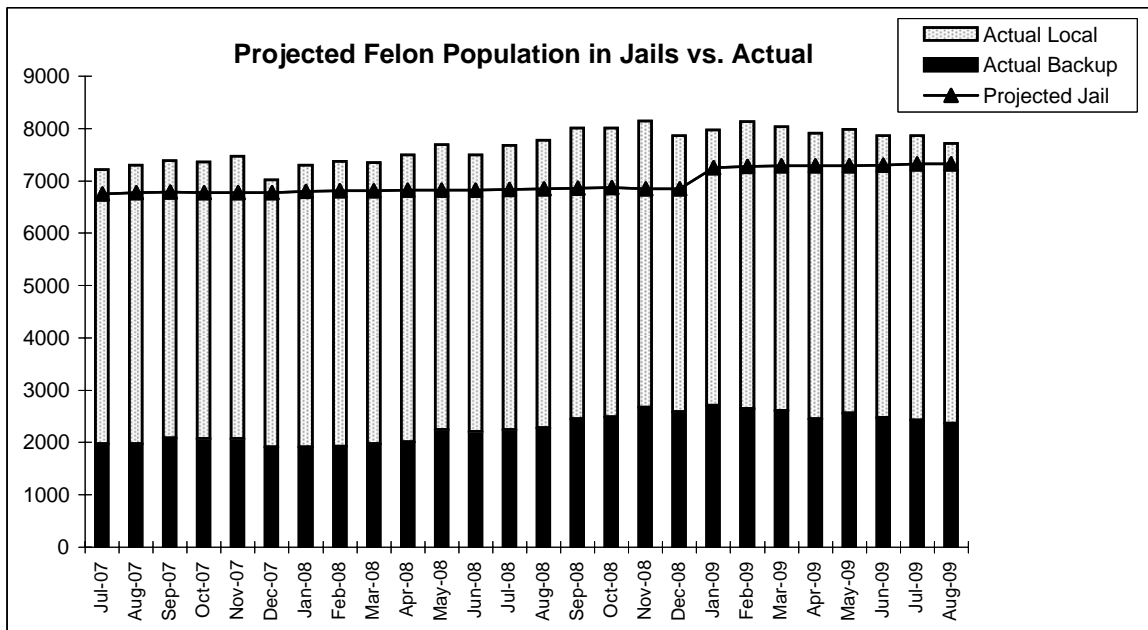
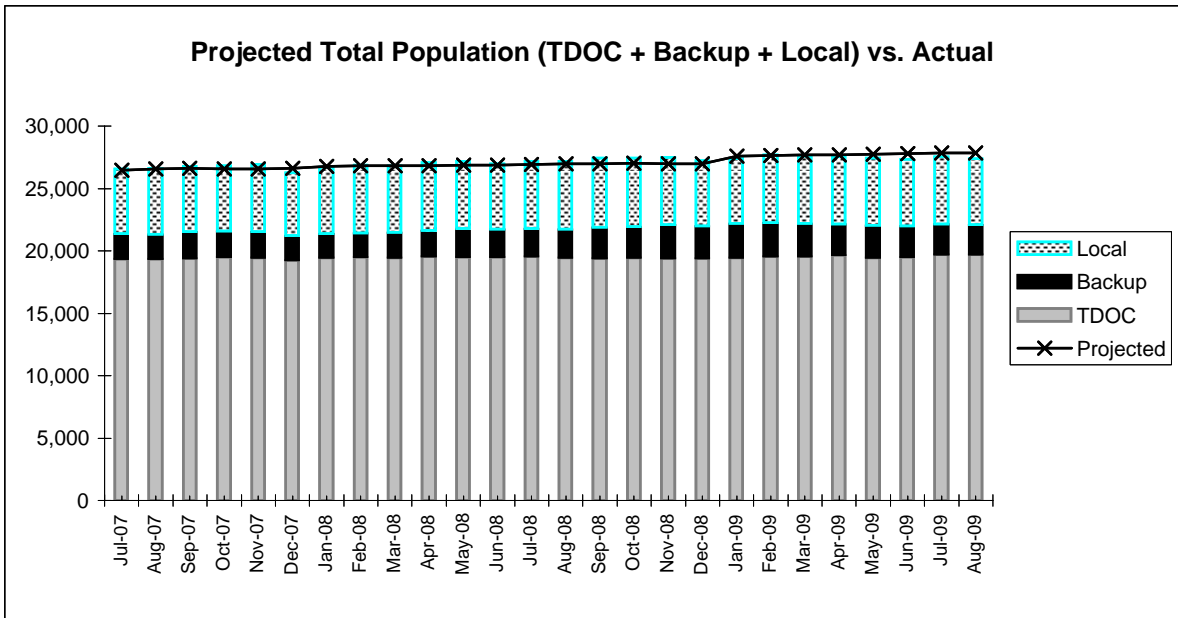
**TDOC POPULATION BY PRIMARY OFFENSE
AS OF July 31, 2009****

	TOTAL POP.	Monthly Change	Homicide	% OF TOTAL	Monthly Change	Kidnap	% OF TOTAL	Monthly Change	Sex Ofnder	% OF TOTAL	Monthly Change	Robbery	% OF TOTAL	Monthly Change	**Property	% OF TOTAL	Monthly Change	Assault	% OF TOTAL	Monthly Change	Drugs	% OF TOTAL	Monthly Change	Other	% OF TOTAL	Monthly Change
Averages																										
FY 04/05	19,263	0.0%	3,543	18.4%		249	1.3%		2,797	14.5%		3,320	17.2%		3,144	16.3%		2,195	11.4%		2,682	13.9%		1,332	6.9%	
FY 05/06	19,248	0.0%	3,574	18.6%		242	1.3%		2,802	14.6%		3,164	16.4%		3,127	16.2%		2,187	11.4%		2,805	14.6%		1,347	7.0%	
FY 06/07	19,216	0.0%	3,593	18.6%		227	1.3%		2,815	14.6%		2,955	16.4%		3,140	16.2%		2,164	11.4%		2,930	14.6%		1,391	7.0%	
FY 07/08	19,258	0.0%	3,629	18.8%		244	1.3%		2,801	14.5%		2,861	14.9%		3,128	16.2%		2,146	11.1%		3,004	15.6%		1,444	7.5%	
2008/2009																										
JUL	19,364	0.5%	3,662	18.9%	0.9%	242	1.2%	-0.8%	2,787	14.4%	-0.5%	2,849	14.7%	-0.4%	3,042	15.7%	-2.7%	2,178	11.2%	1.5%	3,095	16.0%	3.0%	1,509	7.8%	4.5%
AUG	19,284	-0.4%	3,663	19.0%	0.0%	239	1.2%	-1.2%	2,789	14.5%	0.1%	2,839	14.7%	-0.4%	3,005	15.6%	-1.2%	2,175	11.3%	-0.1%	3,080	16.0%	-0.5%	1,494	7.7%	-1.0%
SEP	19,251	-0.2%	3,667	19.0%	0.1%	236	1.2%	-1.3%	2,792	14.5%	0.1%	2,843	14.8%	0.1%	2,990	15.5%	-0.5%	2,175	11.3%	0.0%	3,068	15.9%	-0.4%	1,480	7.7%	-0.9%
OCT	19,305	0.3%	3,680	19.1%	0.4%	235	1.2%	-0.4%	2,788	14.4%	-0.1%	2,883	14.9%	1.4%	3,022	15.7%	1.1%	2,175	11.3%	0.0%	3,039	15.7%	-0.9%	1,483	7.7%	0.2%
NOV	19,230	-0.4%	3,680	19.1%	0.0%	235	1.2%	0.0%	2,783	14.5%	-0.2%	2,861	14.9%	-0.8%	3,004	15.6%	-0.6%	2,169	11.3%	-0.3%	3,040	15.8%	0.0%	1,458	7.6%	-1.7%
DEC	19,244	0.1%	3,694	19.2%	0.4%	233	1.2%	-0.9%	2,776	14.4%	-0.3%	2,870	14.9%	0.3%	2,976	15.5%	-0.9%	2,146	11.2%	-1.1%	3,082	16.0%	1.4%	1,467	7.6%	0.6%
JAN	19,282	0.2%	3,708	19.2%	0.4%	232	1.2%	-0.4%	2,767	14.4%	-0.3%	2,862	14.8%	-0.3%	2,982	15.5%	0.2%	2,154	11.2%	0.4%	3,120	16.2%	1.2%	1,457	7.6%	-0.7%
FEB	19,259	-0.1%	3,620	18.8%	-2.4%	236	1.2%	1.7%	2,805	14.6%	1.4%	2,843	14.8%	-0.7%	2,981	15.5%	0.0%	2,153	11.2%	0.0%	2,942	15.3%	-5.7%	1,679	8.7%	15.2%
MAR	19,392	0.7%	3,711	19.1%	2.5%	235	1.2%	-0.4%	2,765	14.3%	-1.4%	2,887	14.9%	1.5%	3,024	15.6%	1.4%	2,186	11.3%	1.5%	3,129	16.1%	6.4%	1,455	7.5%	-13.3%
APR	19,446	0.3%	3,722	19.1%	0.3%	236	1.2%	0.4%	2,775	14.3%	0.4%	2,862	14.7%	-0.9%	3,014	15.5%	-0.3%	2,196	11.3%	0.5%	3,147	16.2%	0.6%	1,494	7.7%	2.7%
MAY	19,265	-0.9%	3,722	19.3%	0.0%	234	1.2%	-0.8%	2,762	14.3%	-0.5%	2,847	14.8%	-0.5%	2,960	15.4%	-1.8%	2,183	11.3%	-0.6%	3,102	16.1%	-1.4%	1,455	7.6%	-2.6%
JUN	19,323	0.3%	3,736	19.3%	0.4%	232	1.2%	-0.9%	2,782	14.4%	0.7%	2,841	14.7%	-0.2%	2,981	15.4%	0.7%	2,197	11.4%	0.6%	3,108	16.1%	0.2%	1,446	7.5%	-0.6%
FY AVG	19,304	0.0%	3,689	19.1%	0.2%	235	1.2%	-0.4%	2,781	14.4%	-0.1%	2,857	14.8%	-0.1%	2,998	15.5%	-0.4%	2,174	11.3%	0.2%	3,079	16.0%	0.3%	1,490	7.7%	0.2%
2009/2010																										
JUL	19,397	0.4%	3,749	19.3%	0.3%	235	1.2%	1.3%	2,796	14.4%	0.5%	2,855	14.7%	0.5%	2,976	15.3%	-0.2%	2,186	11.3%	-0.5%	3,140	16.2%	1.0%	1,460	7.5%	1.0%
AUG																										
SEP																										
OCT																										
NOV																										
DEC																										
JAN																										
FEB																										
MAR																										
APR																										
MAY																										
JUN																										
FY AVG																										

**All Primary Offense information is reported one month in arrears.

***Excludes Robbery (Prior to September 2000, these offenses only included Theft, Stolen Property and Burglary - now includes All Property except Robbery).

PROJECTED POPULATION VS. ACTUAL JULY 2007 TO PRESENT



Projections Updated January 2009

**INCARCERATED FELON POPULATION
PROJECTIONS VS. ACTUAL
AS OF August 31, 2009**

2008/2009	PROJECTED	ACTUAL	DIFF	% DIFF
JULY	26,906	27,204	298	1.1%
AUGUST	26,971	27,204	233	0.9%
SEPTEMBER	26,995	27,421	426	1.6%
OCTOBER	27,040	27,431	391	1.4%
NOVEMBER	26,968	27,507	539	2.0%
DECEMBER	26,950	27,228	278	1.0%
JANUARY	27,582	27,408	-174	-0.6%
FEBRUARY	27,652	27,669	17	0.1%
MARCH	27,695	27,573	-122	-0.4%
APRIL	27,694	27,546	-148	-0.5%
MAY	27,733	27,419	-314	-1.1%
JUNE	27,773	27,325	-448	-1.6%
FY AVERAGE	27,330	27,411	81	0.3%

2009/2010	PROJECTED	ACTUAL	DIFF	% DIFF
JULY	27,839	27,532	-307	-1.1%
AUGUST	27,868	27,392	-476	-1.7%
SEPTEMBER	27,882			
OCTOBER	27,884			
NOVEMBER	27,808			
DECEMBER	27,888			
JANUARY	27,934			
FEBRUARY	27,973			
MARCH	28,046			
APRIL	28,051			
MAY	28,074			
JUNE	28,112			
FY AVERAGE	27,947	27,462	-392	-1.4%

These tables compare the actual population to the projection model. Thus, whenever the actual population exceeds the projected population, the % difference is interpreted as either exceeding or falling short of the projected population.

NOTE: Projections were updated January 2009.
Averages are column averages.

INCARCERATED FELON POPULATION AS OF August 31, 2009

	Total Felon Population (A+B+C)	Monthly Change	Monthly Percent Change	TDOC Facilities (A)	Percent of Total	TDOC Backup (B)	Percent of Total	Locally Sentenced (C)	Percent of Total	Local Jail Total (B+C)
FY AVG.										
2004/2005	26,035	26	0.1%	19,431	74.6%	2,180	8.4%	4,425	17.0%	6,605
2005/2006	26,323	-8	0.0%	19,406	73.7%	2,293	8.7%	4,624	17.6%	6,917
2006/2007	26,100	19	0.1%	19,379	74.3%	1,885	7.2%	4,836	18.5%	6,722

2007/2008

JULY	26,573	22	0.1%	19,354	72.8%	1,974	7.4%	5,245	19.7%	7,219
AUGUST	26,622	49	0.2%	19,319	72.6%	1,967	7.4%	5,336	20.0%	7,303
SEPTEMBER	26,772	150	0.6%	19,391	72.4%	2,073	7.7%	5,308	19.8%	7,381
OCTOBER	26,829	57	0.2%	19,470	72.6%	2,072	7.7%	5,287	19.7%	7,359
NOVEMBER	26,904	75	0.3%	19,432	72.2%	2,069	7.7%	5,403	20.1%	7,472
DECEMBER	26,267	-637	-2.4%	19,248	73.3%	1,910	7.3%	5,109	19.5%	7,019
JANUARY	26,728	461	1.8%	19,429	72.7%	1,903	7.1%	5,396	20.2%	7,299
FEBRUARY	26,850	122	0.5%	19,475	72.5%	1,922	7.2%	5,453	20.3%	7,375
MARCH	26,805	-45	-0.2%	19,454	72.6%	1,969	7.3%	5,382	20.1%	7,351
APRIL	27,054	249	0.9%	19,560	72.3%	2,007	7.4%	5,487	20.3%	7,494
MAY	27,204	150	0.6%	19,509	71.7%	2,235	8.2%	5,460	20.1%	7,695
JUNE	26,998	-206	-0.8%	19,497	72.2%	2,204	8.2%	5,297	19.6%	7,501
FY Average	26,801	37	0.1%	19,428	72.5%	2,025	7.6%	5,347	19.9%	7,372

2008/2009

JULY	27,204	206	0.8%	19,530	71.8%	2,239	8.2%	5,435	20.0%	7,674
AUGUST	27,204	0	0.0%	19,427	71.4%	2,274	8.4%	5,503	20.2%	7,777
SEPTEMBER	27,421	217	0.8%	19,410	70.8%	2,446	8.9%	5,565	20.3%	8,011
OCTOBER	27,431	10	0.0%	19,417	70.8%	2,483	9.1%	5,531	20.2%	8,014
NOVEMBER	27,507	76	0.3%	19,369	70.4%	2,669	9.7%	5,469	19.9%	8,138
DECEMBER	27,228	-279	-1.0%	19,368	71.1%	2,577	9.5%	5,283	19.4%	7,860
JANUARY	27,408	180	0.7%	19,431	70.9%	2,705	9.9%	5,272	19.2%	7,977
FEBRUARY	27,669	261	1.0%	19,534	70.6%	2,647	9.6%	5,488	19.8%	8,135
MARCH	27,573	-96	-0.3%	19,539	70.9%	2,606	9.5%	5,428	19.7%	8,034
APRIL	27,546	-27	-0.1%	19,632	71.3%	2,448	8.9%	5,466	19.8%	7,914
MAY	27,419	-127	-0.5%	19,431	70.9%	2,550	9.3%	5,438	19.8%	7,988
JUNE	27,325	-94	-0.3%	19,462	71.2%	2,465	9.0%	5,398	19.8%	7,863
FY Average	27,411	27	0.1%	19,463	71.0%	2,509	9.2%	5,440	19.8%	7,949

2009/2010

JULY	27,532	207	0.8%	19,674	71.5%	2,426	8.8%	5,432	19.7%	7,858
AUGUST	27,392	-140	-0.5%	19,674	71.8%	2,359	8.6%	5,359	19.6%	7,718
SEPTEMBER										
OCTOBER										
NOVEMBER										
DECEMBER										
JANUARY										
FEBRUARY										
MARCH										
APRIL										
MAY										
JUNE										
FY Average	27,462	34	0.1%	19,674	71.6%	2,393	8.7%	5,396	19.6%	7,788

Population figures on each year summary line are monthly averages. Monthly change and percent change are calculated from the first month of the year to the last month of the year.

INCARCERATED FELON POPULATION TOTALS AT FISCAL YEAR END (JUNE 30) FY 1997/98 - FY 2008/09

	TOTAL FELON POP. (A+B+C)	TOTAL CHANGE	PERCENT CHANGE	TDOC FACILITIES (A)	PERCENT OF TOTAL	TDOC BACKUP (B)	PERCENT OF TOTAL	LOCALLY SENTENCED (C)	PERCENT OF TOTAL	LOCAL JAIL TOTAL (B+C)
1997-98	21,286	1,680	8.6%	15,640	73.5%	2,103	9.9%	3,543	16.6%	5,646
1998-99	22,287	1,001	4.7%	16,577	74.4%	1,846	8.3%	3,864	17.3%	5,710
1999-00	22,539	252	1.1%	16,824	74.6%	1,957	8.7%	3,758	16.7%	5,715
1900-01	23,062	523	2.3%	17,459	75.7%	1,901	8.2%	3,702	16.1%	5,603
2001-02	24,235	1,173	5.1%	17,715	73.1%	2,505	10.3%	4,015	16.6%	6,520
2002-03	25,469	1,234	5.1%	19,408	76.2%	1,956	7.7%	4,105	16.1%	6,061
2003-04	25,865	396	1.6%	19,408	75.0%	2,110	8.2%	4,347	16.8%	6,457
2004-05	26,209	344	1.3%	19,432	74.1%	2,321	8.9%	4,456	17.0%	6,777
2005-06	26,110	-99	-0.4%	19,429	74.4%	1,874	7.2%	4,807	18.4%	6,681
2006-07	26,551	441	1.7%	19,341	72.8%	2,023	7.6%	5,187	19.5%	7,210
2007-08	26,998	447	1.7%	19,497	72.2%	2,204	8.2%	5,297	19.6%	7,501
2008-09	27,325	327	1.2%	19,462	71.2%	2,465	9.0%	5,398	19.8%	7,863

INCARCERATED FELON POPULATIONS AVERAGES FY 1997/98 - FY 2008/09

	AVG. TOTAL FELON POP. (A+B+C)	ANNUAL CHANGE	PERCENT CHANGE	TDOC FACILITIES (A)	PERCENT OF TOTAL	TDOC BACKUP (B)	PERCENT OF TOTAL	LOCALLY SENTENCED (C)	PERCENT OF TOTAL	LOCAL JAIL TOTAL (B+C)
1997-98	20,401	1,238	6.5%	15,269	74.8%	1,617	7.9%	3,515	17.2%	5,132
1998-99	21,632	1,231	6.0%	15,933	73.7%	1,941	9.0%	3,758	17.4%	5,699
1999-00	22,608	976	4.5%	16,764	74.2%	1,927	8.5%	3,917	17.3%	5,844
1900-01	22,625	17	0.1%	17,140	75.8%	1,742	7.7%	3,743	16.5%	5,485
2001-02	23,891	1,266	5.6%	17,611	73.7%	2,143	9.0%	4,137	17.3%	6,280
2002-03	24,913	1,022	4.3%	18,436	74.0%	2,313	9.3%	4,164	16.7%	6,477
2003-04	25,635	722	2.9%	19,404	75.7%	2,021	7.9%	4,210	16.4%	6,231
2004-05	26,036	401	1.6%	19,431	74.6%	2,180	8.4%	4,425	17.0%	6,605
2005-06	26,323	287	1.1%	19,406	73.7%	2,293	8.7%	4,624	17.6%	6,917
2006-07	26,100	-223	-0.8%	19,379	74.2%	1,885	7.2%	4,836	18.5%	6,721
2007-08	26,801	701	2.7%	19,428	72.5%	2,025	7.6%	5,347	20.0%	7,372
2008-09	27,411	610	2.3%	19,463	71.0%	2,509	9.2%	5,440	19.8%	7,949

NOTE: FISCAL YEAR AVERAGES

LOCAL JAIL POPULATIONS AS OF August 31, 2009

(Source: TDOC's Jail Summary Report)

	Total Jail Pop.	Monthly Change	% Change	Total TDOC Inmates	Local Felons	Federal & Others	Other Convicted Felons	Convicted Misdem.	Total Pre-trial Detainees	% TDOC Felons	% Local Felons	% Federal & Others	% Other Conv. Felons	% Conv. Misdem.	% Pre-trial Detainees
2008/2009															
JULY	26,310	-462	-0.3%	2,239	5,435	982	509	5,061	12,084	9%	21%	4%	2%	19%	46%
AUGUST	26,913	603	2.3%	2,274	5,503	947	526	5,331	12,332	8%	20%	4%	2%	20%	46%
SEPTEMBER	26,779	-134	-0.5%	2,446	5,565	931	526	5,109	12,202	9%	21%	3%	2%	19%	46%
OCTOBER	26,536	-243	-0.9%	2,483	5,531	1040	779	5,124	11,579	9%	21%	4%	3%	19%	44%
NOVEMBER	26,219	-317	-1.2%	2,669	5,469	1016	776	4,753	11,536	10%	21%	4%	3%	18%	44%
DECEMBER	24,778	-1,441	-5.5%	2,577	5,283	955	708	4,229	11,026	10%	21%	4%	3%	17%	44%
JANUARY	26,214	1,436	5.8%	2,705	5,272	1021	752	5,092	11,372	10%	20%	4%	3%	19%	43%
FEBRUARY	26,119	-95	-0.4%	2,647	5,488	999	742	5,295	10,948	10%	21%	4%	3%	20%	42%
MARCH	26,441	322	1.2%	2,606	5,428	1016	760	5,203	11,428	10%	21%	4%	3%	20%	43%
APRIL	26,265	-176	-0.7%	2,448	5,466	942	717	5,274	11,418	9%	21%	4%	3%	20%	43%
MAY	26,898	633	2.4%	2,550	5,438	923	724	5,636	11,627	9%	20%	3%	3%	21%	43%
JUNE	26,772	-126	-0.5%	2,465	5,398	916	813	5,341	11,839	9%	20%	3%	3%	20%	44%
2008/2009 AVERAGE	26,354			2,509	5,440	974	694	5,121	11,616	10%	21%	4%	3%	19%	44%

	Total Jail Pop.	Monthly Change	% Change	Total TDOC Inmates	Local Felons	Federal & Others	Other Convicted Felons	Convicted Misdem.	Total Pre-trial Detainees	% TDOC Felons	% Local Felons	% Federal & Others	% Other Conv. Felons	% Conv. Misdem.	% Pre-trial Detainees
2009/2010															
JULY	27,169	397	1.5%	2,426	5,432	1017	700	5,741	11,853	9%	20%	4%	3%	21%	44%
AUGUST	27,218	49	0.2%	2,359	5,359	1003	724	5,115	12,658	9%	20%	4%	3%	19%	47%
SEPTEMBER															
OCTOBER															
NOVEMBER															
DECEMBER															
JANUARY															
FEBRUARY															
MARCH															
APRIL															
MAY															
JUNE															
2009/2010 AVERAGE	27,194			2,393	5,396	1,010	712	5,428	12,256	9%	20%	4%	3%	20%	45%

FELON ADMISSIONS IN TENNESSEE FISCAL YEAR 2009/2010
August 2009

TOTAL ADMISSIONS	PERCENT CHANGE	NEW COMMITS	PERCENT OF TOTAL	VIOLATORS RETURNED	PERCENT OF TOTAL	ESCAPEES & OTHERS	PERCENT OF TOTAL
------------------	----------------	-------------	------------------	--------------------	------------------	-------------------	------------------

2009/2010

TDOC

	TOTAL ADMISSIONS	PERCENT CHANGE	NEW COMMITS	PERCENT OF TOTAL	VIOLATORS RETURNED	PERCENT OF TOTAL	ESCAPEES & OTHERS	PERCENT OF TOTAL
JULY	839		486	57.9%	344	41.0%	9	1.1%
AUGUST	573	-31.7%	348	60.7%	217	37.9%	8	1.4%
SEPTEMBER								
OCTOBER								
NOVEMBER								
DECEMBER								
JANUARY								
FEBRUARY								
MARCH								
APRIL								
MAY								
JUNE								
TOTAL	1,412		834	59.1%	561	39.7%	17	1.2%

2009/2010

LOCALLY SENTENCED

	TOTAL ADMISSIONS	PERCENT CHANGE	NEW COMMITS	PERCENT OF TOTAL	VIOLATORS RETURNED	PERCENT OF TOTAL	ESCAPEES & OTHERS	PERCENT OF TOTAL
JULY	349		244	69.9%	105	30.1%	0	0.0%
AUGUST	225	-35.5%	150	66.7%	74	32.9%	1	0.4%
SEPTEMBER								
OCTOBER								
NOVEMBER								
DECEMBER								
JANUARY								
FEBRUARY								
MARCH								
APRIL								
MAY								
JUNE								
TOTAL	574		394	68.6%	179	31.2%	1	0.2%

2009/2010

SYSTEM TOTAL

	TOTAL ADMISSIONS	PERCENT CHANGE	NEW COMMITS	PERCENT OF TOTAL	VIOLATORS RETURNED	PERCENT OF TOTAL	ESCAPEES & OTHERS	PERCENT OF TOTAL
JULY	1,188		730	61.4%	449	37.8%	9	0.8%
AUGUST	798	-32.8%	498	62.4%	291	36.5%	9	1.1%
SEPTEMBER	0		0					
OCTOBER	0		0					
NOVEMBER	0		0					
DECEMBER	0		0					
JANUARY	0		0					
FEBRUARY	0		0					
MARCH	0		0					
APRIL	0		0					
MAY	0		0					
JUNE	0		0					
TOTAL	1,986		1,228	61.8%	740	37.3%	18	0.9%

Admission statistics are incomplete because all data are not received by TDOC immediately after sentencing. In some cases information is not received until several months after sentencing; therefore, the numbers for any given month may be different from the previous month's report.

FELON ADMISSIONS IN TENNESSEE FISCAL YEAR 2008/2009

TOTAL ADMISSIONS	PERCENT CHANGE	NEW COMMITTS	PERCENT OF TOTAL	VIOLATORS RETURNED	PERCENT OF TOTAL	ESCAPEES & OTHERS	PERCENT OF TOTAL
---------------------	-------------------	-----------------	---------------------	-----------------------	---------------------	----------------------	---------------------

2008/2009

TDOC

JULY	992		558	56.3%	416	41.9%	18	1.8%
AUGUST	964	-2.8%	515	53.4%	434	45.0%	15	1.6%
SEPTEMBER	995	3.2%	571	57.4%	416	41.8%	8	0.8%
OCTOBER	947	-4.8%	519	54.8%	421	44.5%	7	0.7%
NOVEMBER	881	-7.0%	529	60.0%	345	39.2%	7	0.8%
DECEMBER	754	-14.4%	422	56.0%	326	43.2%	6	0.8%
JANUARY	934	23.9%	568	60.8%	354	37.9%	12	1.3%
FEBRUARY	872	-6.6%	528	60.6%	335	38.4%	9	1.0%
MARCH	862	-1.1%	483	56.0%	367	42.6%	12	1.4%
APRIL	866	0.5%	497	57.4%	354	40.9%	15	1.7%
MAY	826	-4.6%	517	62.6%	305	36.9%	4	0.5%
JUNE	825	-0.1%	485	58.8%	331	40.1%	9	1.1%
TOTAL	10,718		6,192	57.8%	4,404	41.1%	122	1.1%

2008/2009

LOCALLY SENTENCED

JULY	314		208	66.2%	106	33.8%	0	0.0%
AUGUST	298	-5.1%	207	69.5%	88	29.5%	3	1.0%
SEPTEMBER	302	1.3%	194	64.2%	107	35.4%	1	0.3%
OCTOBER	277	-8.3%	180	65.0%	97	35.0%	0	0.0%
NOVEMBER	261	-5.8%	184	70.5%	76	29.1%	1	0.4%
DECEMBER	253	-3.1%	159	62.8%	93	36.8%	1	0.4%
JANUARY	292	15.4%	205	70.2%	85	29.1%	2	0.7%
FEBRUARY	300	2.7%	192	64.0%	107	35.7%	1	0.3%
MARCH	281	-6.3%	179	63.7%	100	35.6%	2	0.7%
APRIL	276	-1.8%	180	65.2%	94	34.1%	2	0.7%
MAY	314	13.8%	217	69.1%	97	30.9%	0	0.0%
JUNE	240	-23.6%	162	67.5%	75	31.3%	3	1.3%
TOTAL	3,408		2,267	66.5%	1,125	33.0%	16	0.5%

2008/2009

SYSTEM TOTAL

JULY	1,306		766	58.7%	522	40.0%	18	1.4%
AUGUST	1,262	-3.4%	722	57.2%	522	41.4%	18	1.4%
SEPTEMBER	1,297	2.8%	765	59.0%	523	40.3%	9	0.7%
OCTOBER	1,224	-5.6%	699	57.1%	518	42.3%	7	0.6%
NOVEMBER	1,142	-6.7%	713	62.4%	421	36.9%	8	0.7%
DECEMBER	1,007	-11.8%	581	57.7%	419	41.6%	7	0.7%
JANUARY	1,226	21.7%	773	63.1%	439	35.8%	14	1.1%
FEBRUARY	1,172	-4.4%	720	61.4%	442	37.7%	10	0.9%
MARCH	1,143	-2.5%	662	57.9%	467	40.9%	14	1.2%
APRIL	1,142	-0.1%	677	59.3%	448	39.2%	17	1.5%
MAY	1,140	-0.2%	734	64.4%	402	35.3%	4	0.4%
JUNE	1,065	-6.6%	647	60.8%	406	38.1%	12	1.1%
TOTAL	14,126		8,459	59.9%	5,529	39.1%	138	1.0%

Admission statistics are incomplete because all data are not received by TDOC immediately after sentencing. In some cases information is not received until several months after sentencing; therefore, the numbers for any given month may be different from the previous month's report.

**FELON ADMISSIONS IN TENNESSEE
FISCAL YEARS 1998/99 - 2008/09**

TOTAL ADMISSIONS	PERCENT CHANGE	NEW COMMITS	PERCENT OF TOTAL	VIOLATORS RETURNED	PERCENT OF TOTAL	ESCAPEES & OTHERS	PERCENT OF TOTAL
------------------	----------------	-------------	------------------	--------------------	------------------	-------------------	------------------

TDOC								
1998-99	8,452	-2.4%	4,905	58.0%	3,464	41.0%	83	1.0%
1999-00	8,694	2.9%	5,249	60.4%	3,350	38.5%	95	1.1%
2000-01	9,037	3.9%	5,381	59.5%	3,514	38.9%	142	1.6%
2001-02	9,608	6.3%	5,644	58.7%	3,848	40.0%	116	1.2%
2002-03	9,529	-0.8%	5,658	59.4%	3,769	39.6%	102	1.1%
2003-04	10,262	7.7%	6,086	59.3%	4,047	39.4%	129	1.3%
2004-05	10,417	1.5%	6,027	57.9%	4,275	41.0%	115	1.1%
2005-06	10,913	4.8%	6,299	57.7%	4,492	41.2%	122	1.1%
2006-07	11,208	1.5%	6,343	57.9%	4,733	41.0%	132	1.1%
2007-08	11,197	-0.1%	6,326	56.5%	4,748	42.4%	123	1.1%
2008-09	10,718	-4.3%	6,192	57.8%	4,404	41.1%	122	1.1%

LOCALLY SENTENCED								
1998-99	4,721	-4.5%	3,202	67.8%	1,490	31.6%	29	0.6%
1999-00	4,756	0.7%	3,510	73.8%	1,224	25.7%	22	0.5%
2000-01	4,405	-7.4%	2,982	67.7%	1,388	31.5%	35	0.8%
2001-02	4,022	-8.7%	2,693	67.0%	1,307	32.5%	22	0.5%
2002-03	3,733	-7.2%	2,405	64.4%	1,308	35.0%	20	0.5%
2003-04	3,582	-4.0%	2,350	65.6%	1,214	33.9%	18	0.5%
2004-05	3,759	4.9%	2,413	64.2%	1,327	35.3%	19	0.5%
2005-06	3,638	-3.2%	2,321	64.2%	1,296	35.3%	21	0.5%
2006-07	3,667	4.9%	2,322	63.3%	1,332	36.3%	13	0.4%
2007-08	3,615	-1.4%	2,443	67.6%	1,152	31.9%	20	0.6%
2008-09	3,408	-5.7%	2,267	66.5%	1,125	33.0%	16	0.5%

SYSTEM TOTAL								
1998-99	13,173	4.9%	8,107	61.5%	4,954	37.6%	112	0.9%
1999-00	13,450	2.1%	8,759	65.1%	4,574	34.0%	117	0.9%
2000-01	13,442	-0.1%	8,363	62.2%	4,902	36.5%	177	1.3%
2001-02	13,630	1.4%	8,337	61.2%	5,155	37.8%	138	1.0%
2002-03	13,262	-2.7%	8,063	60.8%	5,077	38.3%	122	0.9%
2003-04	13,844	4.4%	8,436	60.9%	5,261	38.0%	147	1.1%
2004-05	14,176	2.4%	8,440	59.5%	5,602	39.5%	134	0.9%
2005-06	14,551	2.6%	8,620	59.2%	5,788	39.8%	143	1.0%
2006-07	14,875	2.2%	8,665	58.3%	6,065	39.5%	145	1.0%
2007-08	14,812	-0.4%	8,769	59.2%	5,900	39.8%	143	1.0%
2008-09	14,126	-4.6%	8,459	59.9%	5,529	39.1%	138	1.0%

FELON RELEASES IN TENNESSEE FISCAL YEAR 2009/2010

	TOTAL RELEASES	PERCENT CHANGE	PAROLE	PERCENT OF TOTAL	PROBATION COM. COR.	PERCENT OF TOTAL	EXPIRATION & OTHERS	PERCENT OF TOTAL
--	----------------	----------------	--------	------------------	---------------------	------------------	---------------------	------------------

*TDOC

JULY	528		304	57.6%	42	8.0%	182	34.5%
AUGUST	525	-0.6%	280	53.3%	42	8.0%	203	38.7%
SEPTEMBER								
OCTOBER								
NOVEMBER								
DECEMBER								
JANUARY								
FEBRUARY								
*MARCH								
APRIL								
MAY								
JUNE								
TOTAL	1,053		584	55.5%	84	8.0%	385	36.6%

TDOC BACKUP

JULY	427		73	17.1%	217	50.8%	137	32.1%
AUGUST	447	4.7%	81	18.1%	237	53.0%	129	28.9%
SEPTEMBER								
OCTOBER								
NOVEMBER								
DECEMBER								
JANUARY								
FEBRUARY								
MARCH								
APRIL								
MAY								
JUNE								
TOTAL	874		154	17.6%	454	51.9%	266	30.4%

LOCALLY SENTENCED

JULY	262		40	15.3%	103	39.3%	119	45.4%
AUGUST	284	8.4%	35	12.3%	136	47.9%	113	39.8%
SEPTEMBER								
OCTOBER								
NOVEMBER								
DECEMBER								
JANUARY								
FEBRUARY								
MARCH								
APRIL								
MAY								
JUNE								
TOTAL	546		75	13.7%	239	43.8%	232	42.5%

SYSTEM TOTAL

JULY	1,217		417	34.3%	362	29.7%	438	36.0%
AUGUST	1,256	3.2%	396	31.5%	415	33.0%	445	35.4%
SEPTEMBER								
OCTOBER								
NOVEMBER								
DECEMBER								
JANUARY								
FEBRUARY								
MARCH								
APRIL								
MAY								
JUNE								
TOTAL	2,473		813	32.9%	777	31.4%	883	35.7%

***Beginning with the March 2008 update, the TDOC Release numbers in this report include offenders released from TDOC after revocation of a split confinement suspension of sentence. Only figures back to FY 06/07 were adjusted. Release statistics are incomplete because all data are not received by TDOC immediately after inmates are released. Therefore, the numbers for any given month may be different from the previous month's report.**

FELON RELEASES IN TENNESSEE FISCAL YEAR 2008/2009

	TOTAL RELEASES	PERCENT CHANGE	PAROLE	PERCENT OF TOTAL	PROBATION COM. COR.	PERCENT OF TOTAL	EXPIRATION & OTHERS	PERCENT OF TOTAL
*TDOC								
JULY	500		234	46.8%	73	14.6%	193	38.6%
AUGUST	522	4.4%	227	43.5%	74	14.2%	221	42.3%
SEPTEMBER	532	1.9%	269	50.6%	77	14.5%	186	35.0%
OCTOBER	492	-7.5%	261	53.0%	40	8.1%	191	38.8%
NOVEMBER	511	3.9%	260	50.9%	39	7.6%	212	41.5%
DECEMBER	522	2.2%	284	54.4%	50	9.6%	188	36.0%
JANUARY	447	-14.4%	214	47.9%	35	7.8%	198	44.3%
FEBRUARY	501	12.1%	268	53.5%	39	7.8%	194	38.7%
*MARCH	600	19.8%	333	55.5%	55	9.2%	212	35.3%
APRIL	524	-12.7%	291	55.5%	48	9.2%	185	35.3%
MAY	576	9.9%	311	54.0%	74	12.8%	191	33.2%
JUNE	556	-3.5%	312	56.1%	69	12.4%	175	31.5%
TOTAL	6,283		3,264	51.9%	673	10.7%	2,346	37.3%

TDOC BACKUP								
JULY	524		64	12.2%	311	59.4%	149	28.4%
AUGUST	549	4.8%	47	8.6%	364	66.3%	138	25.1%
SEPTEMBER	498	-9.3%	52	10.4%	303	60.8%	143	28.7%
OCTOBER	451	-9.4%	46	10.2%	280	62.1%	125	27.7%
NOVEMBER	429	-4.9%	57	13.3%	298	69.5%	74	17.2%
DECEMBER	579	35.0%	63	10.9%	308	53.2%	208	35.9%
JANUARY	454	-21.6%	53	11.7%	283	62.3%	118	26.0%
FEBRUARY	489	7.7%	76	15.5%	266	54.4%	147	30.1%
MARCH	504	3.1%	66	13.1%	289	57.3%	149	29.6%
APRIL	496	-1.6%	76	15.3%	281	56.7%	139	28.0%
MAY	493	-0.6%	93	18.9%	271	55.0%	129	26.2%
JUNE	527	6.9%	104	19.7%	277	52.6%	146	27.7%
TOTAL	5,993		797	13.3%	3,531	58.9%	1,665	27.8%

LOCALLY SENTENCED								
JULY	304		41	13.5%	149	49.0%	114	37.5%
AUGUST	285	-6.3%	31	10.9%	142	49.8%	112	39.3%
SEPTEMBER	313	9.8%	33	10.5%	151	48.2%	129	41.2%
OCTOBER	280	-10.5%	28	10.0%	129	46.1%	123	43.9%
NOVEMBER	224	-20.0%	38	17.0%	123	54.9%	63	28.1%
DECEMBER	381	70.1%	37	9.7%	154	40.4%	190	49.9%
JANUARY	253	-33.6%	24	9.5%	120	47.4%	109	43.1%
FEBRUARY	263	4.0%	24	9.1%	117	44.5%	122	46.4%
MARCH	285	8.4%	36	12.6%	161	56.5%	88	30.9%
APRIL	260	-8.8%	25	9.6%	119	45.8%	116	44.6%
MAY	294	13.1%	43	14.6%	137	46.6%	114	38.8%
JUNE	296	0.7%	43	14.5%	128	43.2%	125	42.2%
TOTAL	3,438		403	11.7%	1,630	47.4%	1,405	40.9%

SYSTEM TOTAL								
JULY	1,328		339	25.5%	533	40.1%	456	34.3%
AUGUST	1,356	2.1%	305	22.5%	580	42.8%	471	34.7%
SEPTEMBER	1,343	-1.0%	354	26.4%	531	39.5%	458	34.1%
OCTOBER	1,223	-8.9%	335	27.4%	449	36.7%	439	35.9%
NOVEMBER	1,164	-4.8%	355	30.5%	460	39.5%	349	30.0%
DECEMBER	1,482	27.3%	384	25.9%	512	34.5%	586	39.5%
JANUARY	1,154	-22.1%	291	25.2%	438	38.0%	425	36.8%
FEBRUARY	1,253	8.6%	368	29.4%	422	33.7%	463	37.0%
MARCH	1,389	10.9%	435	31.3%	505	36.4%	449	32.3%
APRIL	1,280	-7.8%	392	30.6%	448	35.0%	440	34.4%
MAY	1,363	6.5%	447	32.8%	482	35.4%	434	31.8%
JUNE	1,379	1.2%	459	33.3%	474	34.4%	446	32.3%
TOTAL	15,714		4,464	28.4%	5,834	37.1%	5,416	34.5%

***Beginning with the March 2008 update, the TDOC Release numbers in this report include offenders released from TDOC after revocation of a split confinement suspension of sentence. Only figures back to FY 06/07 were adjusted.**

Release statistics are incomplete because all data are not received by TDOC immediately after inmates are released.

Therefore, the numbers for any given month may be different from the previous month's report.

FELON RELEASES IN TENNESSEE FISCAL YEARS 1998/99 - 2008/09

	TOTAL RELEASES	PERCENT CHANGE	PAROLE	PERCENT OF TOTAL	PROBATION COM. COR.	PERCENT OF TOTAL	EXPIRATION & OTHERS	PERCENT OF TOTAL
--	----------------	----------------	--------	------------------	---------------------	------------------	---------------------	------------------

TDOC

1998-99	4,241	0.6%	2,270	53.5%	444	10.5%	1,527	36.0%
1999-00	4,691	10.6%	2,548	54.3%	506	10.8%	1,637	34.9%
2000-01	5,032	7.3%	2,727	54.2%	568	11.3%	1,737	34.5%
2001-02	4,553	-9.5%	2,224	48.8%	514	11.3%	1,815	39.9%
2002-03	4,842	6.3%	2,262	46.7%	603	12.5%	1,977	40.8%
2003-04	5,493	13.4%	2,552	46.5%	698	12.7%	2,243	40.8%
2004-05	5,804	5.7%	2,767	47.7%	709	12.2%	2,328	40.1%
2005-06	6,146	5.9%	3,152	51.3%	756	12.3%	2,238	36.4%
2006-07	6,882	12.0%	3,453	50.2%	892	13.0%	2,537	36.9%
2007-08	6,636	-3.6%	3,254	49.0%	875	13.2%	2,507	37.8%
2008-09	6,283	-5.3%	3,264	51.9%	673	10.7%	2,346	37.3%

TDOC BACKUP

1998-99	4,044	4.4%	484	12.0%	2,516	62.2%	1,044	25.8%
1999-00	3,933	-2.7%	546	13.9%	2,315	58.9%	1,072	27.3%
2000-01	3,917	-0.4%	486	12.4%	2,402	61.3%	1,029	26.3%
2001-02	4,212	7.5%	392	9.3%	2,677	63.6%	1,143	27.1%
2002-03	4,539	7.8%	423	9.3%	2,884	63.5%	1,232	27.1%
2003-04	4,788	5.5%	409	8.5%	3,150	65.8%	1,229	25.7%
2004-05	5,235	9.3%	485	9.3%	3,349	64.0%	1,401	26.8%
2005-06	5,913	13.0%	577	9.8%	3,721	62.9%	1,615	27.3%
2006-07	5,874	-0.7%	594	10.1%	3,804	64.8%	1,476	25.1%
2007-08	6,177	5.2%	642	10.4%	3,955	64.0%	1,580	25.6%
2008-09	5,993	-3.0%	797	13.3%	3,531	58.9%	1,665	27.8%

LOCALLY SENTENCED

1998-99	4,546	0.2%	558	12.3%	2,326	51.2%	1,662	36.6%
1999-00	4,365	-4.0%	610	14.0%	2,076	47.6%	1,679	38.5%
2000-01	3,998	-8.4%	550	13.8%	1,983	49.6%	1,465	36.6%
2001-02	3,810	-4.7%	387	10.2%	1,909	50.1%	1,514	39.7%
2002-03	3,509	-7.9%	266	7.6%	1,760	50.2%	1,483	42.3%
2003-04	3,311	-5.6%	247	7.5%	1,601	48.4%	1,463	44.2%
2004-05	3,337	0.8%	272	8.2%	1,681	50.4%	1,384	41.5%
2005-06	3,544	6.2%	278	7.8%	1,826	51.5%	1,440	40.6%
2006-07	3,409	-3.8%	338	9.9%	1,679	49.3%	1,392	40.8%
2007-08	3,488	2.3%	399	11.4%	1,679	48.1%	1,410	40.4%
2008-09	3,438	-1.4%	403	11.7%	1,630	47.4%	1,405	40.9%

SYSTEM TOTAL

1998-99	12,831	18.7%	3,312	31.7%	5,286	40.1%	4,233	28.1%
1999-00	12,989	1.2%	3,704	28.5%	4,897	37.7%	4,388	33.8%
2000-01	12,947	-0.3%	3,763	29.1%	4,953	38.3%	4,231	32.7%
2001-02	12,575	-2.9%	3,003	23.9%	5,100	40.6%	4,472	35.6%
2002-03	12,890	2.5%	2,951	22.9%	5,247	40.7%	4,692	36.4%
2003-04	13,592	5.4%	3,208	23.6%	5,449	40.1%	4,935	36.3%
2004-05	14,376	5.8%	3,524	24.5%	5,739	39.9%	5,113	35.6%
2005-06	15,603	8.5%	4,007	25.7%	6,303	40.4%	5,293	33.9%
2006-07	16,165	3.6%	4,385	27.1%	6,375	39.4%	5,405	33.4%
2007-08	16,301	0.8%	4,295	26.3%	6,509	39.9%	5,497	33.7%
2008-09	15,714	-3.6%	4,464	28.4%	5,834	37.1%	5,416	34.5%

PROJECTED FELON ADMISSIONS VS. ACTUAL
August 2009
(Projections Updated January 2009)

FY 2008/2009	NEW COMMITMENTS AND OTHERS				PAROLE/PROBATION/COM. CORR. VIOLATORS				TOTAL ADMISSIONS			
	PROJECTED	ACTUAL	DIFF	% DIFF	PROJECTED	ACTUAL	DIFF	% DIFF	PROJECTED	ACTUAL	DIFF	% DIFF
Jul-08	691	784	-93	-11.9%	497	522	-25	-4.8%	1,188	1,306	-118	-9.0%
Aug-08	663	740	-77	-10.4%	512	522	-10	-1.9%	1,175	1,262	-87	-6.9%
Sep-08	665	774	-109	-14.1%	504	523	-19	-3.6%	1,169	1,297	-128	-9.9%
Oct-08	650	706	-56	-7.9%	521	518	3	0.6%	1,171	1,224	-53	-4.3%
Nov-08	636	721	-85	-11.8%	515	421	94	22.3%	1,151	1,142	9	0.8%
Dec-08	732	588	144	24.5%	493	419	74	17.7%	1,225	1,007	218	21.6%
Jan-09	753	787	-34	-4.3%	516	439	77	17.5%	1,269	1,226	43	3.5%
Feb-09	743	730	13	1.8%	497	442	55	12.4%	1,240	1,172	68	5.8%
Mar-09	735	676	59	8.7%	478	467	11	2.4%	1,213	1,143	70	6.1%
Apr-09	726	694	32	4.6%	485	448	37	8.3%	1,211	1,142	69	6.0%
May-09	725	738	-13	-1.8%	524	402	122	30.3%	1,249	1,140	109	9.6%
Jun-09	727	659	68	10.3%	495	406	89	21.9%	1,222	1,065	157	14.7%
FY Total	8,446	8,597	-151	-1.8%	6,037	5,529	508	9.2%	14,483	14,126	357	2.5%
FY Avg.	703.8	716.4	-12.6	-1.0%	503.1	460.8	42.3	10.3%	1206.9	1177.2	29.8	3.2%

FY 2009/2010	NEW COMMITMENTS AND OTHERS				PAROLE/PROBATION/COM. CORR. VIOLATORS				TOTAL ADMISSIONS			
	PROJECTED	ACTUAL	DIFF	% DIFF	PROJECTED	ACTUAL	DIFF	% DIFF	PROJECTED	ACTUAL	DIFF	% DIFF
Jul-09	757	739	18	2.4%	492	449	43	9.6%	1,249	1,188	61	5.1%
Aug-09	757	507	250	49.3%	522	291	231	79.4%	1,279	798	481	60.3%
Sep-09	740				475				1,215			
Oct-09	722				504				1,226			
Nov-09	731				474				1,205			
Dec-09	766				515				1,281			
Jan-10	758				507				1,265			
Feb-10	749				453				1,202			
Mar-10	740				498				1,238			
Apr-10	730				505				1,235			
May-10	731				544				1,275			
Jun-10	732				519				1,251			
FY Total	8,913	1,246	N/A*	N/A*	6,008	740	N/A*	N/A*	14,921	1,986	N/A*	N/A*
FY Avg.	742.8	623.0	134.0	25.9%	500.7	370.0	137.0	44.5%	1,243	993	271	32.7%

These tables compare the accuracy of the projection model by comparing projected admissions to actual admissions. Months in which the projected admissions are less than actual admissions will be represented with a negative sign.

NOTE: The last three months of actual numbers may change due to the time delay in data entry. It takes approximately 3 to 4 months for all data in any given month to accumulate or "top out".

PROJECTED FELON RELEASES VS. ACTUAL

August 2009

(Projections Updated January 2009)

	PAROLEES				PROBATIONERS & COMMUNITY CORRECTIONS				DISCHARGES & OTHERS				TOTAL RELEASES			
	PROJECTED	ACTUAL	DIFF	% DIFF	PROJECTED	ACTUAL	DIFF	% DIFF	PROJECTED	ACTUAL	DIFF	% DIFF	PROJECTED	ACTUAL	DIFF	% DIFF
2008/2009																
Jul-08	364	339	25	7.4%	517	533	-16	-3.0%	427	456	-29	-6.4%	1,308	1,328	-20	-1.5%
Aug-08	389	305	84	27.5%	530	580	-50	-8.6%	430	471	-41	-8.7%	1,349	1,356	-7	-0.5%
Sep-08	385	354	31	8.8%	485	531	-46	-8.7%	485	458	27	5.9%	1,355	1,343	12	0.9%
Oct-08	362	335	27	8.1%	516	449	67	14.9%	456	439	17	3.9%	1,334	1,223	111	9.1%
Nov-08	367	355	12	3.4%	563	460	103	22.4%	463	349	114	32.7%	1,393	1,164	229	19.7%
Dec-08	390	384	6	1.6%	486	512	-26	-5.1%	486	586	-100	-17.1%	1,362	1,482	-120	-8.1%
Jan-09	357	291	66	22.7%	550	438	112	25.6%	436	425	11	2.6%	1,343	1,154	189	16.4%
Feb-09	335	368	-33	-9.0%	477	422	55	13.0%	478	463	15	3.2%	1,290	1,253	37	3.0%
Mar-09	372	435	-63	-14.5%	465	505	-40	-7.9%	459	449	10	2.2%	1,296	1,389	-93	-6.7%
Apr-09	373	392	-19	-4.8%	501	448	53	11.8%	447	440	7	1.6%	1,321	1,280	41	3.2%
May-09	389	447	-58	-13.0%	513	482	31	6.4%	454	434	20	4.6%	1,356	1,363	-7	-0.5%
Jun-09	362	459	-97	-21.1%	441	474	-33	-7.0%	491	446	45	10.1%	1,294	1,379	-85	-6.2%
FY Total	4,445	4,464	-19	-0.4%	6,044	5,834	210	3.6%	5,512	5,416	96	1.8%	16,001	15,714	287	1.8%
FY Avg.	370.4	372.0	-1.6	1.4%	503.7	486.2	17.5	4.5%	459.3	451.3	8.0	2.9%	1,333.4	1,310	23.9	2.4%

	PAROLEES				PROBATIONERS & COMMUNITY CORRECTIONS				DISCHARGES & OTHERS				TOTAL RELEASES			
	PROJECTED	ACTUAL	DIFF	% DIFF	PROJECTED	ACTUAL	DIFF	% DIFF	PROJECTED	ACTUAL	DIFF	% DIFF	PROJECTED	ACTUAL	DIFF	% DIFF
2009/2010																
Jul-09	373	417	-44	-10.6%	498	362	136	37.6%	430	438	-8	-1.8%	1,301	1,217	84	6.9%
Aug-09	406	396	10	2.5%	500	415	85	20.5%	496	445	51	11.5%	1,402	1,256	146	11.6%
Sep-09	398				501				471				1,370			
Oct-09	374				458				479				1,311			
Nov-09	390				542				513				1,445			
Dec-09	409				521				481				1,411			
Jan-10	361				480				493				1,334			
Feb-10	353				491				488				1,332			
Mar-10	359				482				502				1,343			
Apr-10	392				501				476				1,369			
May-10	390				501				519				1,410			
Jun-10	378				470				482				1,330			
FY Total	4,583	813	N/A*	N/A*	5,945	777	N/A*	N/A*	5,830	883	N/A*	N/A*	16,358	2,473	N/A*	N/A*
FY Avg.	381.9	406.5	-17.0	-4.0%	495.4	388.5	110.5	29.0%	485.8	441.5	21.5	4.8%	1,363.2	1,237	115.0	9.3%

These tables compare the accuracy of the projection model by comparing projected releases to actual releases. Months in which the projected releases were less than actual releases will be represented with a negative sign.

NOTE: The last three months of actual numbers may change due to the time delay in data entry. It takes approximately 3 to 4 months for all data in any given month to accumulate or "top out".

**COMMUNITY SERVICES POPULATION
as of August 2009**

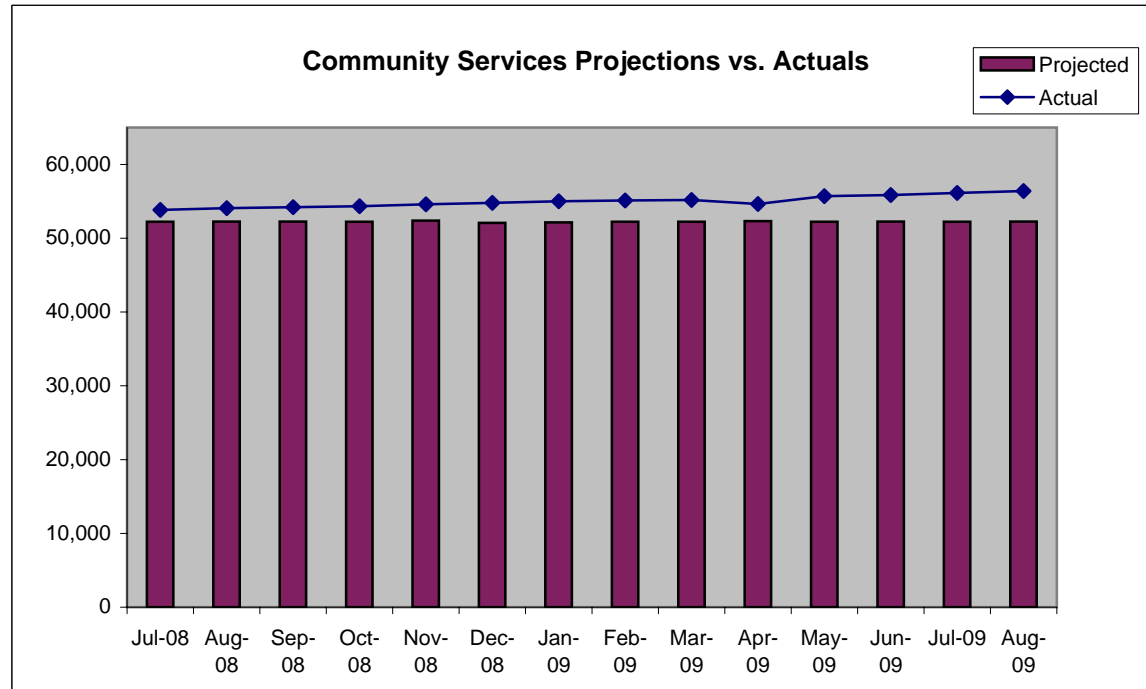
	Community Services Total	Monthly Percent Change	Regular Probation	Percent of Total	Intensive Probation	Percent of Total	Community Corrections	Percent of Total
FY AVERAGE								
2003/2004	43,417	0.4%	36,582	84.3%	1,010	2.3%	5,825	13.4%
2004/2005	46,140	0.8%	39,173	84.9%	1,010	2.2%	5,957	12.9%
2005/2006	47,529	0.2%	40,308	84.8%	988	2.1%	6,234	13.1%
2006/2007	51,047	0.0%	43,605	85.4%	931	1.8%	6,511	12.8%
2007/2008	53,502	0.4%	45,792	85.6%	975	1.8%	6,735	12.6%
2008/2009								
July	54,827	0.3%	47,031	85.8%	983	1.8%	6,813	12.4%
August	55,079	0.5%	47,221	85.7%	1,006	1.8%	6,852	12.4%
September	55,222	0.3%	47,320	85.7%	1,028	1.9%	6,874	12.4%
October	55,315	0.2%	47,504	85.9%	972	1.8%	6,839	12.4%
November	55,570	0.5%	47,716	85.9%	983	1.8%	6,871	12.4%
December	55,836	0.5%	47,933	85.8%	1,007	1.8%	6,896	12.4%
January	56,022	0.3%	48,085	85.8%	1,007	1.8%	6,930	12.4%
February	56,080	0.1%	48,218	86.0%	975	1.7%	6,887	12.3%
March	56,097	0.0%	48,342	86.2%	918	1.6%	6,837	12.2%
April	56,508	0.7%	48,633	86.1%	931	1.6%	6,944	12.3%
May	56,618	0.2%	48,739	86.1%	928	1.6%	6,951	12.3%
June	56,779	0.3%	48,924	86.2%	930	1.6%	6,925	12.2%
FY Average	55,829	0.3%	47,972	85.9%	972	1.7%	6,885	12.3%

	Community Services Total	Monthly Percent Change	Regular Probation	Percent of Total	Intensive Probation	Percent of Total	Community Corrections	Percent of Total
2009/2010								
July	57,071	0.5%	49,185	86.2%	928	1.6%	6,958	12.2%
August	57,296	0.4%	49,409	86.2%	914	1.6%	6,973	12.2%
September								
October								
November								
December								
January								
February								
March								
April								
May								
June								
FY Average	57,184	0.5%	49,297	86.2%	921	1.6%	6,966	12.2%

Population figures on each year-end summary line are monthly averages. Percent change is calculated from the first month of the year to the last month of the year.

COMMUNITY SERVICES PROJECTIONS VS. ACTUAL August 2009

	Projected	Actual	DIFF	% DIFF
Jun-06	47,477	48,159	-682	-1.4%
Jul-06	47,584	48,405	-821	-1.7%
Aug-06	47,727	48,719	-992	-2.0%
Sep-06	47,892	49,134	-1,242	-2.5%
Oct-06	47,987	49,520	-1,533	-3.1%
Nov-06	48,088	49,983	-1,895	-3.8%
Dec-06	48,162	50,024	-1,862	-3.7%
Jan-07	49,163	50,390	-1,227	-2.4%
Feb-07	49,208	50,675	-1,467	-2.9%
Mar-07	49,177	50,814	-1,637	-3.2%
Apr-07	49,219	51,059	-1,840	-3.6%
May-07	49,223	51,228	-2,005	-3.9%
Jun-07	49,232	51,441	-2,209	-4.3%
Jul-07	49,241	51,606	-2,365	-4.6%
Aug-07	49,322	51,745	-2,423	-4.7%
Sep-07	49,325	51,857	-2,532	-4.9%
Oct-07	49,403	51,905	-2,502	-4.8%
Nov-07	49,321	52,168	-2,847	-5.5%
Dec-07	49,360	52,387	-3,027	-5.8%
Jan-08	52,135	52,631	-496	-0.9%
Feb-08	52,221	52,725	-504	-1.0%
Mar-08	52,224	52,938	-714	-1.3%
Apr-08	52,306	53,154	-848	-1.6%
May-08	52,219	53,532	-1,313	-2.5%
Jun-08	52,260	53,680	-1,420	-2.6%
Jul-08	52,238	53,844	-1,606	-3.0%
Aug-08	52,249	54,073	-1,824	-3.4%
Sep-08	52,245	54,194	-1,949	-3.6%
Oct-08	52,221	54,343	-2,122	-3.9%
Nov-08	52,379	54,587	-2,208	-4.0%
Dec-08	52,086	54,791	-2,705	-4.9%
Jan-09	52,135	55,015	-2,880	-5.2%
Feb-09	52,221	55,105	-2,884	-5.2%
Mar-09	52,224	55,179	-2,955	-5.4%
Apr-09	52,306	54,646	-2,340	-4.3%
May-09	52,219	55,690	-3,471	-6.2%
Jun-09	52,260	55,849	-3,589	-6.4%
Jul-09	52,238	56,143	-3,905	-7.0%
Aug-09	52,249	56,382	-4,133	-7.3%
Sep-09	52,245	0		
Oct-09	52,221	0		
Nov-09	52,379	0		



***NOTE:** This chart *ONLY* includes projected population totals for Community Corrections and Regular Probation.

COMMUNITY SERVICES POPULATION FY END (JUNE 30) FY 1997/98 - FY 2008/09

	TOTAL COM.SRV.POP	TOTAL CHANGE	REGULAR PROBATION	PERCENT OF TOTAL	INTENSIVE PROBATION	PERCENT OF TOTAL	COMM. CORR.	PERCENT OF TOTAL
1997-98	34,076	6.3%	28,432	83.4%	1,788	5.2%	3,856	11.3%
1998-99	36,748	7.8%	30,804	83.8%	1,644	4.5%	4,300	11.7%
1999-00	36,533	-0.6%	30,160	82.6%	1,657	4.5%	4,716	12.9%
2000-01	38,075	4.2%	31,458	82.6%	1,751	4.6%	4,866	12.8%
2001-02	41,652	9.4%	35,097	84.3%	975	2.3%	5,580	13.4%
2002-03	42,388	1.8%	35,636	84.1%	975	2.3%	5,777	13.6%
2003-04	44,476	4.9%	37,617	84.6%	1,067	2.4%	5,792	13.0%
2004-05	48,984	10.1%	41,950	85.6%	965	2.0%	6,069	12.4%
2005-06	49,126	0.3%	41,763	85.0%	967	2.0%	6,396	13.0%
2006-07	52,345	6.6%	44,837	85.7%	904	1.7%	6,604	12.6%
2007-08	54,677	4.5%	46,853	85.7%	997	1.8%	6,827	12.5%
2008-09	56,779	3.8%	48,924	86.2%	930	1.6%	6,925	12.2%

COMMUNITY SERVICES POPULATION AVERAGES FY 1997/98 - FY 2008/09

	AVG. TOTAL COM.SRV.POP	ANNUAL CHANGE	REGULAR PROBATION	PERCENT OF TOTAL	INTENSIVE PROBATION	PERCENT OF TOTAL	COMM. CORR.	PERCENT OF TOTAL
1997-98	33,007	5.2%	27,365	82.9%	1,772	5.4%	3,870	11.7%
1998-99	34,837	5.5%	29,016	83.3%	1,757	5.0%	4,064	11.7%
1999-00	35,772	2.7%	29,583	82.7%	1,624	4.5%	4,565	12.8%
2000-01	37,529	4.9%	31,068	82.8%	1,725	4.6%	4,736	12.6%
2001-02	40,149	7.0%	33,812	84.2%	1,053	2.6%	5,284	13.2%
2002-03	42,043	4.7%	35,346	84.1%	982	2.3%	5,715	13.6%
2003-04	43,417	3.3%	36,582	84.3%	1,010	2.3%	5,825	13.4%
2004-05	46,140	6.3%	39,173	84.9%	1,010	2.2%	5,957	12.9%
2005-06	47,530	3.0%	40,308	84.8%	988	2.1%	6,234	13.1%
2006-07	51,047	7.4%	43,605	85.4%	931	1.8%	6,511	12.8%
2007-08	53,502	4.8%	45,792	85.6%	975	1.8%	6,735	12.6%
2008-09	55,829	4.3%	47,972	85.9%	972	1.7%	6,885	12.3%

**PAROLE GRANT RATES IN TENNESSEE
FISCAL YEARS 2004/05 - 2009/10
August 2009**

	TOTAL HEARINGS	PAROLE GRANTED	% OF TOTAL	PAROLE DENIED	% OF TOTAL	PAROLE DENIED/WAIVED	% OF TOTAL	CONT.	% OF TOTAL	CONT./WAIVED	% OF TOTAL
FY TOTALS											
2004/2005	13,023	3,845	29.5%	7,260	55.7%	8,139	62.5%	866	6.6%	173	1.3%
2005/2006	14,126	4,400	31.1%	7,656	54.2%	935	6.6%	918	6.5%	217	1.5%
2006/2007*	13,985	4,778	34.2%	7,359	52.6%	793	5.7%	773	5.5%	282	2.0%
2007/2008	14,327	4,286	29.9%	8,006	55.9%	886	6.2%	872	6.1%	277	1.9%

2008/2009

JULY	1,144	341	29.8%	625	54.6%	70	6.1%	87	7.6%	21	1.8%
AUGUST	1,182	375	31.7%	653	55.2%	64	5.4%	61	5.2%	29	2.5%
SEPTEMBER	1,305	439	33.6%	683	52.3%	64	4.9%	81	6.2%	38	2.9%
OCTOBER	1,384	429	31.0%	780	56.4%	68	4.9%	60	4.3%	47	3.4%
NOVEMBER	928	311	33.5%	499	53.8%	50	5.4%	56	6.0%	12	1.3%
DECEMBER	1,117	485	43.4%	505	45.2%	46	4.1%	53	4.7%	28	2.5%
JANUARY	1,053	438	41.6%	453	43.0%	63	6.0%	64	6.1%	35	3.3%
FEBRUARY	1,233	504	40.9%	556	45.1%	66	5.4%	74	6.0%	33	2.7%
MARCH	1,140	443	38.9%	531	46.6%	72	6.3%	69	6.1%	25	2.2%
APRIL	1,176	494	42.0%	535	45.5%	46	3.9%	59	5.0%	42	3.6%
MAY	1,093	479	43.8%	479	43.8%	56	5.1%	53	4.8%	26	2.4%
JUNE	1,143	463	40.5%	552	48.3%	37	3.2%	59	5.2%	32	2.8%
TOTAL	13,898	5,201	37.4%	6,851	49.3%	702	5.1%	776	5.6%	368	2.6%

2009/2010

JULY	1,153	460	39.9%	548	47.5%	50	4.3%	70	6.1%	25	2.2%
AUGUST	1,128	476	42.2%	517	45.8%	51	4.5%	56	5.0%	28	2.5%
SEPTEMBER											
OCTOBER											
NOVEMBER											
DECEMBER											
JANUARY											
FEBRUARY											
MARCH											
APRIL											
MAY											
JUNE											
TOTAL	2,281	936	41.0%	1,065	46.7%	101	4.4%	126	5.5%	53	2.3%

*As of the May 2007 report, the denied category has been broken out into denied and denied/waived, and the continue category has been broken out into continued and continued/waived. These categories are more definitive and will ensure that TDOC and BOPP reported statistics are more consistent. Data for this breakout is not available prior to FY 2005-2006.

Parole statistics are incomplete because all data are not received by TDOC immediately after inmates are paroled.

Therefore, the numbers for any given month may be different from the previous month's report

PAROLE POPULATIONS FISCAL YEARS 2004/2005 - 2009/2010

2004/2005 AVERAGE ACTIVE POPULATION 8,369
2005/2006 AVERAGE ACTIVE POPULATION 8,757
2006/2007 AVERAGE ACTIVE POPULATION 9,701

2007/2008

	ACTIVE POPULATION	MONTHLY CHANGE	PERCENT CHANGE
JULY	10,249		
AUGUST	10,377	128	0.5%
SEPTEMBER	10,392	15	0.1%
OCTOBER	10,402	10	0.1%
NOVEMBER	10,445	43	0.4%
DECEMBER	10,597	152	1.5%
JANUARY	10,601	4	0.0%
FEBRUARY	10,542	-59	-0.6%
MARCH	10,527	-15	-0.1%
APRIL	10,533	6	0.1%
MAY	10,594	61	0.6%
JUNE	10,617	23	0.2%
AVERAGE	10,490		

2008/2009

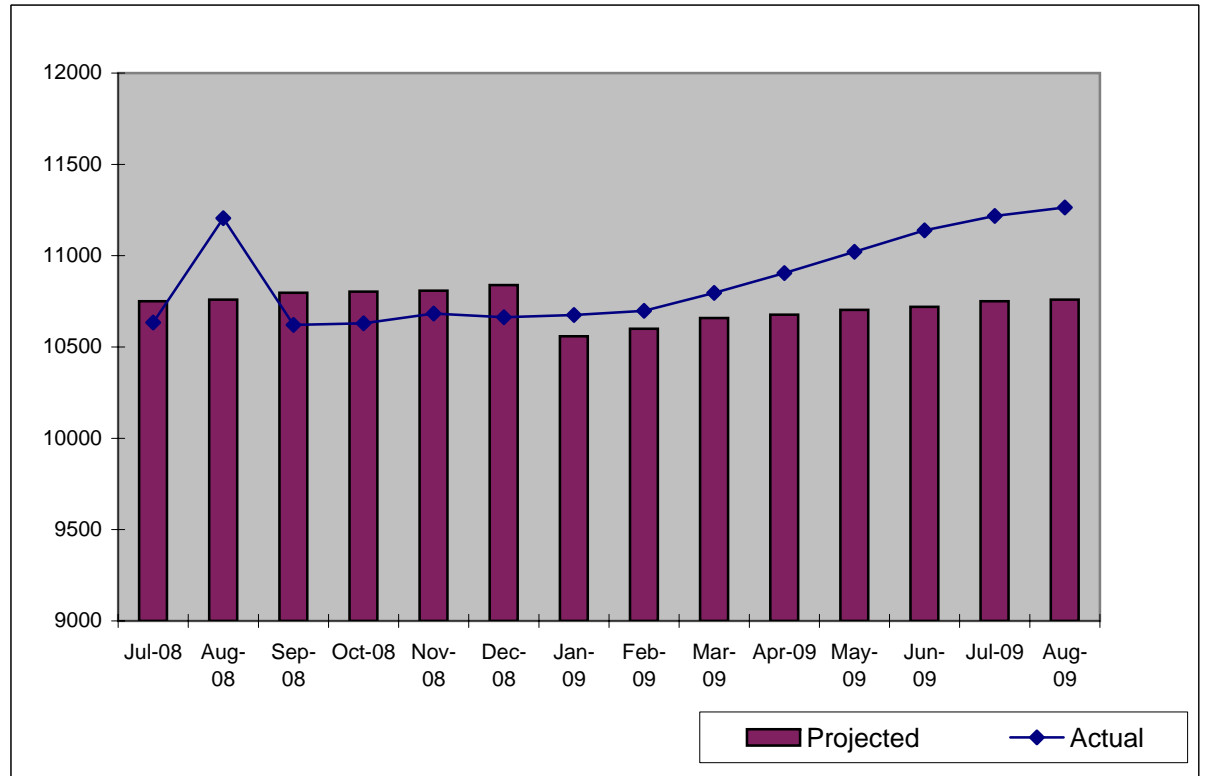
	ACTIVE POPULATION	MONTHLY CHANGE	PERCENT CHANGE
JULY	10,634	17	0.2%
AUGUST	11,205	571	5.4%
SEPTEMBER	10,621	-584	-5.2%
OCTOBER	10,630	9	0.1%
NOVEMBER	10,683	53	0.5%
DECEMBER	10,663	-20	-0.2%
JANUARY	10,675	12	0.1%
FEBRUARY	10,698	23	0.2%
MARCH	10,796	98	0.9%
APRIL	10,905	109	1.0%
MAY	11,021	116	1.1%
JUNE	11,139	118	1.1%
AVERAGE	10,806		

2009/2010

	ACTIVE POPULATION	MONTHLY CHANGE	PERCENT CHANGE
JULY	11,218	79	0.7%
AUGUST	11,264	46	0.4%
SEPTEMBER			
OCTOBER			
NOVEMBER			
DECEMBER			
JANUARY			
FEBRUARY			
MARCH			
APRIL			
MAY			
JUNE			
AVERAGE	11,241		

PAROLE POPULATION PROJECTIONS VS. ACTUAL JULY 2008 to PRESENT

	Projected	Actual	Diff.	% Diff.
Jul-08	10751	10,634	117	1.1%
Aug-08	10759	11,205	-446	-4.0%
Sep-08	10797	10,621	176	1.7%
Oct-08	10803	10,630	173	1.6%
Nov-08	10808	10,683	125	1.2%
Dec-08	10839	10,663	176	1.7%
Jan-09	10559	10,675	-116	-1.1%
Feb-09	10600	10,698	-98	-0.9%
Mar-09	10659	10,796	-137	-1.3%
Apr-09	10677	10,905	-228	-2.1%
May-09	10703	11,021	-318	-2.9%
Jun-09	10720	11,139	-419	-3.8%
Jul-09	10751	11,218	-467	-4.2%
Aug-09	10759	11,264	-505	-4.5%
Sep-09	10797			
Oct-09	10803			
Nov-09	10808			
Dec-09	10839			
Jan-10	10871			
Feb-10	10887			
Mar-10	10905			
Apr-10	10946			
May-10	10962			
Jun-10	10973			



BLUE REPORT USER'S GUIDE

Incarcerated Population

TDOC Backup: Felons sentenced to TDOC custody and held in local jails while awaiting transfer to a TDOC institution.

Locally Sentenced: Convicted felons sentenced to serve their time in a local jail. As felony offenders, these persons are under TDOC jurisdiction.

Other Convicted Felons: Convicted felons awaiting sentencing or not yet ready for transfer to TDOC because of other pending charges. Includes technical violators awaiting probable cause/revocation/recission hearing or adjudication of pending charges.

Convicted Misdemeanants: Inmates serving time because of a misdemeanor conviction.

Total Pre-Trial Detainees: Includes inmates charged with either a felony or a misdemeanor but not yet convicted.

Others: Inmates held in local facilities for federal crimes, city ordinances, etc.

Community Corrections: A grant program created in 1985 as an alternative to incarceration. Programs are developed based on the individual needs of the area served.

Admissions

New Commits: Refers to any person convicted of a felony sentenced to TDOC, but who is not on probation or parole. This may include persons who had prior incarcerations.

Violators Returned: Refers to commitment of felons on technical violations of the conditions of their parole or probation, or community correction terms.

Releases

Parole: Felons originally sentenced to an incarceration period and released to serve the remainder of their sentence under supervision.

Probation-Community Correction: Usually non-violent felons sentenced to serve a split sentence; a short jail or prison term and the remainder under state supervision.

General Notes

Backup: All offenders sentenced to TDOC custody are counted as admissions. Some offenders are held in backup at a local jail while awaiting transfer to a TDOC facility. This is due to lack of room for all offenders in TDOC facilities. Offenders in backup can be released for a number of reasons before they are transferred to TDOC. Inmates released from Backup to a TDOC facility are not counted as releases.

Primary Offense: As of July 2000, offenses are categorized according to the Tennessee Incident Based Reporting System (TIBRS) which is based on the FBI's National Incident Based Reporting System (NIBRS). This system of reporting is an attempt to standardize categorical offense reporting across criminal justice agencies. For more detail on how TCA code is categorized according to the TIBRS system, see the TBI website at <http://www.tbi.state.tn.us/tca.htm> or the TDOC Research Brief, "Assessing the Impact of the TIBRS on TDOC Criminal Offense Reporting."

Projected Felon Population-Admissions & Releases: is taken from the Annual Felon Population Projection Report. Ten year felon projections including admissions and releases are estimated every fall in order to help the TDOC in it's long term strategic planning. The current projections can be found on our website at <http://www.state.tn.us/corrections>.

Total TDOC Inmates, considered "backup" for TDOC purposes, refers to inmates sentenced to TDOC custody and held in local jails while awaiting transfer to a TDOC institution.