

# **TENNESSEE ECONOMIC ANALYSIS**

**October 2021**

**NOT TO BE RELEASED BEFORE:**

TIME: 1:30 PM CT

DAY: Thursday, November 18, 2021

**Prepared by:**

**Tennessee Department of Labor and Workforce Development**

**Workforce Insights, Research and Reporting Engine Division**

## Table of Contents

### Economic Indicators

	<u>Page</u>
Briefing Packet Summary	1
Labor Force Estimates Summary - Household Survey	2
Seasonally Adjusted Nonfarm Employment	3
Major Changes in Seasonally Adjusted Nonfarm Employment	3
Business Survey - Not Seasonally Adjusted	4-5

### Appendix

Unemployment Rates, 2010 - 2021	6
Hours and Earnings of Production Workers	7

### Graphs

Tennessee Unemployment Rates	8
Unemployment Rates - U.S. and Tennessee	8
Goods - Producing Jobs in Tennessee	9
Service - Providing Jobs in Tennessee	9

## BRIEFING PACKET SUMMARY

October 2021 pre.

### Unemployment Rates

Tennessee	October 2020	September 2021 rev.	October 2021 pre.	Change From:	
				Year Ago	Month Ago
Not Seasonally Adjusted	7.4%	3.5%	<b>3.3%</b>	-4.1%	-0.2%
Seasonally Adjusted	7.8%	4.4%	<b>4.2%</b>	-3.6%	-0.2%

#### United States

Not Seasonally Adjusted	6.6%	4.6%	<b>4.3%</b>	-2.3%	-0.3%
Seasonally Adjusted	6.9%	4.8%	<b>4.6%</b>	-2.3%	-0.2%

### Hours and Earnings of Production Workers (Manufacturing)

Tennessee	September 2021 rev.	October 2021 pre.	Change
Average Weekly Earnings	\$923.67	\$917.09	-\$6.58
Average Weekly Hours	42.1	41.8	-0.3
Average Hourly Earnings	\$21.94	\$21.94	\$0.00

#### United States

Average Weekly Earnings	\$994.21	\$1003.54	\$9.33
Average Weekly Hours	41.1	41.4	0.3
Average Hourly Earnings	\$24.19	\$24.24	\$0.05

### Summary

Tennessee's October seasonally adjusted unemployment rate decreased to 4.2% from the September revised rate of 4.4%.

Over the past year, Tennessee's seasonally adjusted unemployment rate decreased from 7.8% to 4.2% while the U.S. rate declined from 6.9% to 4.6%.

Total nonfarm employment increased 6,800 jobs from September to October. The largest increases were in manufacturing, professional & business services, and mining, logging, & construction.

Over the year, nonfarm employment increased 80,700 jobs. The largest increases were in leisure & hospitality, professional & business services, and trade, transportation & utilities.

## LABOR FORCE ESTIMATES SUMMARY

### HOUSEHOLD SURVEY

<b>Tennessee*</b> Not Seasonally Adjusted	October 2020	Revised September 2021	Preliminary October 2021	Change from October 2020 to October 2021		Change from September 2021 to October 2021	
Civilian Labor Force	3,405,856	3,286,432	<b>3,295,071</b>	-110,785	-3.3%	8,639	0.3%
Labor Force Participation Rate	62.4%	59.7%	<b>59.7%</b>	-2.7	percentage points	0.0	percentage points
Employment	3,152,327	3,170,348	<b>3,184,755</b>	32,428	1.0%	14,407	0.5%
Unemployment	253,529	116,084	<b>110,316</b>	-143,213	-56.5%	-5,768	-5.0%
Unemployment Rate	7.4%	3.5%	<b>3.3%</b>	-4.1	percentage points	-0.2	percentage points

#### Seasonally Adjusted

Civilian Labor Force	3,396,932	3,322,498	<b>3,313,097</b>	-83,835	-2.5%	-9,401	-0.3%
Labor Force Participation Rate	62.3%	60.3%	<b>60.1%</b>	-2.2	percentage points	-0.2	percentage points
Employment	3,131,888	3,175,610	<b>3,173,280</b>	41,392	1.3%	-2,330	-0.1%
Unemployment	265,044	146,888	<b>139,817</b>	-125,227	-47.2%	-7,071	-4.8%
Unemployment Rate	7.8%	4.4%	<b>4.2%</b>	-3.6	percentage points	-0.2	percentage points

<b>United States**</b> Not Seasonally Adjusted	October 2020	Revised September 2021	Preliminary October 2021	Change from October 2020 to October 2021		Change from September 2021 to October 2021	
Civilian Labor Force	161,053,000	161,392,000	<b>161,862,000</b>	809,000	0.5%	470,000	0.3%
Labor Force Participation Rate	61.7%	61.7%	<b>61.8%</b>	0.1	percentage points	0.1	percentage points
Employment	150,433,000	154,026,000	<b>154,966,000</b>	4,533,000	3.0%	940,000	0.6%
Unemployment	10,620,000	7,366,000	<b>6,896,000</b>	-3,724,000	-35.1%	-470,000	-6.4%
Unemployment Rate	6.6%	4.6%	<b>4.3%</b>	-2.3	percentage points	-0.3	percentage points

#### Seasonally Adjusted

Civilian Labor Force	160,718,000	161,354,000	<b>161,458,000</b>	740,000	0.5%	104,000	0.1%
Labor Force Participation Rate	61.6%	61.6%	<b>61.6%</b>	0.0	percentage points	0.0	percentage points
Employment	149,669,000	153,680,000	<b>154,039,000</b>	4,370,000	2.9%	359,000	0.2%
Unemployment	11,049,000	7,674,000	<b>7,419,000</b>	-3,630,000	-32.9%	-255,000	-3.3%
Unemployment Rate	6.9%	4.8%	<b>4.6%</b>	-2.3	percentage points	-0.2	percentage points

\* Error range for Tennessee estimates cannot be computed

\*\* Error range for U.S. estimates is +/- 0.2%

## Seasonally Adjusted Nonfarm Employment

(numbers in thousands)

Annual Change      Monthly Change

October 2020 to October 2021		September 2021 to October 2021	
Net Chg.	% chg.	Net Chg.	% chg.

	October 2020	September 2021	October 2021 pre.				
Total Non-Farm	3,018.5	3,092.4	<b>3,099.2</b>	80.7	2.7%	6.8	0.2%
Mining, Logging and Construction	132.6	132.1	<b>134.4</b>	1.8	1.4%	2.3	1.7%
Mining and Logging	4.1	4.3	<b>4.3</b>	0.2	4.9%	0.0	0.0%
Construction	128.5	127.8	<b>130.1</b>	1.6	1.2%	2.3	1.8%
Manufacturing	342.1	346.9	<b>350.6</b>	8.5	2.5%	3.7	1.1%
Durable Goods Manufacturing	217.0	221.9	<b>225.2</b>	8.2	3.8%	3.3	1.5%
Non-Durable Goods Manufacturing	125.1	125.0	<b>125.4</b>	0.3	0.2%	0.4	0.3%
Trade, Transportation, and Utilities	635.3	649.4	<b>651.2</b>	15.9	2.5%	1.8	0.3%
Wholesale Trade	115.6	119.0	<b>119.1</b>	3.5	3.0%	0.1	0.1%
Retail Trade	327.6	331.2	<b>332.5</b>	4.9	1.5%	1.3	0.4%
Transportation, Warehousing, and Utilities	192.1	199.2	<b>199.6</b>	7.5	3.9%	0.4	0.2%
Information	43.3	44.8	<b>44.9</b>	1.6	3.7%	0.1	0.2%
Financial Activities	170.4	174.4	<b>174.4</b>	4.0	2.3%	0.0	0.0%
Finance and Insurance	131.5	132.6	<b>133.0</b>	1.5	1.1%	0.4	0.3%
Real Estate, Rental, and Leasing	38.9	41.8	<b>41.4</b>	2.5	6.4%	-0.4	-1.0%
Professional and Business Services	423.5	442.6	<b>445.9</b>	22.4	5.3%	3.3	0.7%
Professional, Scientific, and Technical Services	149.1	162.3	<b>162.0</b>	12.9	8.7%	-0.3	-0.2%
Management of Companies and Enterprises	49.7	50.2	<b>50.4</b>	0.7	1.4%	0.2	0.4%
Administrative, Support, and Waste Services	224.7	230.1	<b>233.5</b>	8.8	3.9%	3.4	1.5%
Education and Health Services	429.5	426.7	<b>424.4</b>	-5.1	-1.2%	-2.3	-0.5%
Educational Services	57.3	58.5	<b>58.5</b>	1.2	2.1%	0.0	0.0%
Health Care and Social Assistance	372.2	368.2	<b>365.9</b>	-6.3	-1.7%	-2.3	-0.6%
Leisure and Hospitality	291.6	315.9	<b>315.1</b>	23.5	8.1%	-0.8	-0.3%
Arts, Entertainment, and Recreation	34.2	39.9	<b>39.9</b>	5.7	16.7%	0.0	0.0%
Accommodation and Food Services	257.4	276.0	<b>275.2</b>	17.8	6.9%	-0.8	-0.3%
Other Services	118.5	122.9	<b>123.0</b>	4.5	3.8%	0.1	0.1%
Government	431.7	436.7	<b>435.3</b>	3.6	0.8%	-1.4	-0.3%
Federal Government	52.9	51.8	<b>51.8</b>	-1.1	-2.1%	0.0	0.0%
State Government	95.7	96.1	<b>95.8</b>	0.1	0.1%	-0.3	-0.3%
Local Government	283.1	288.8	<b>287.7</b>	4.6	1.6%	-1.1	-0.4%

### Major Changes in Seasonally Adjusted Nonfarm Employment (in thousands)

#### I. Monthly Change (from September 2021 rev. to October 2021 pre.)

	September 2021 rev.	October 2021 pre.	Change
<b>A. Major Employment Increases</b>			
Manufacturing	346.9	350.6	3.7
Professional and Business Services	442.6	445.9	3.3
Mining, Logging and Construction	132.1	134.4	2.3
<b>B. Major Employment Decreases</b>			
Health Care and Social Assistance	368.2	365.9	-2.3
Local Government	288.8	287.7	-1.1
Accommodation and Food Services	276.0	275.2	-0.8

#### II. Yearly Change (from October 2020 to October 2021 pre.)

	October 2020	October 2021 pre.	Change
<b>A. Major Employment Increases</b>			
Leisure and Hospitality	291.6	315.1	23.5
Professional and Business Services	423.5	445.9	22.4
Trade, Transportation, and Utilities	635.3	651.2	15.9
<b>B. Major Employment Decreases</b>			
Health Care and Social Assistance	372.2	365.9	-6.3
Federal Government	52.9	51.8	-1.1

**BUSINESS SURVEY - Not Seasonally Adjusted**

Estimated Nonfarm Employment by Industry\*

(numbers in thousands)	October 2020	September 2021	October 2021 pre.	Annual Change		Monthly Change	
				October 2020 to October 2021		September 2021 to October 2021	
				Net Chg.	% chg.	Net Chg.	% chg.
Total Non-Farm	3,040.8	3,105.5	<b>3,123.8</b>	83.0	2.7%	18.3	0.6%
Total Private	2,596.6	2,660.6	<b>2,676.9</b>	80.3	3.1%	16.3	0.6%
Goods Producing	474.5	478.2	<b>485.1</b>	10.6	2.2%	6.9	1.4%
Mining, Logging and Construction	133.4	132.9	<b>135.3</b>	1.9	1.4%	2.4	1.8%
Manufacturing	341.1	345.3	<b>349.8</b>	8.7	2.6%	4.5	1.3%
Durable Goods Manufacturing	216.4	220.8	<b>224.7</b>	8.3	3.8%	3.9	1.8%
Wood Products	12.8	13.1	<b>13.2</b>	0.4	3.1%	0.1	0.8%
Non-Metallic Mineral Products	13.8	14.2	<b>14.4</b>	0.6	4.3%	0.2	1.4%
Primary Metal Products	10.6	11.0	<b>11.2</b>	0.6	5.7%	0.2	1.8%
Fabricated Metal Products	36.9	38.5	<b>38.9</b>	2.0	5.4%	0.4	1.0%
Machinery Manufacturing	23.5	23.8	<b>23.7</b>	0.2	0.9%	-0.1	-0.4%
Computer and Electronic Products	6.1	6.3	<b>6.3</b>	0.2	3.3%	0.0	0.0%
Electrical Equipment and Appliances	17.1	17.9	<b>18.2</b>	1.1	6.4%	0.3	1.7%
Transportation Equipment	69.9	70.1	<b>72.5</b>	2.6	3.7%	2.4	3.4%
Furniture and Related Products	9.6	9.6	<b>9.8</b>	0.2	2.1%	0.2	2.1%
Miscellaneous Durable Manufacturing	16.1	16.3	<b>16.5</b>	0.4	2.5%	0.2	1.2%
Non-Durable Goods Manufacturing	124.7	124.5	<b>125.1</b>	0.4	0.3%	0.6	0.5%
Food Manufacturing	36.1	36.0	<b>35.9</b>	-0.2	-0.6%	-0.1	-0.3%
Beverage and Tobacco Products	7.4	7.9	<b>7.9</b>	0.5	6.8%	0.0	0.0%
Paper Manufacturing	12.5	12.9	<b>12.8</b>	0.3	2.4%	-0.1	-0.8%
Printing and Related Support Activities	7.8	7.8	<b>7.8</b>	0.0	0.0%	0.0	0.0%
Chemical Manufacturing	25.7	25.4	<b>25.5</b>	-0.2	-0.8%	0.1	0.4%
Plastics and Rubber Products	24.0	23.6	<b>23.6</b>	-0.4	-1.7%	0.0	0.0%
Service Providing	2,566.3	2,627.3	<b>2,638.7</b>	72.4	2.8%	11.4	0.4%
Private Service Providing (Service Providing Less Government)	2,122.1	2,182.4	<b>2,191.8</b>	69.7	3.3%	9.4	0.4%
Trade, Transportation, and Utilities	634.3	646.6	<b>652.2</b>	17.9	2.8%	5.6	0.9%
Wholesale Trade	115.8	118.8	<b>119.0</b>	3.2	2.8%	0.2	0.2%
Merchant wholesalers, Durable Goods	68.2	70.8	<b>70.7</b>	2.5	3.7%	-0.1	-0.1%
Merchant wholesalers, Non-Durable Goods	40.8	41.2	<b>41.5</b>	0.7	1.7%	0.3	0.7%
Wholesale Electronic Markets	6.8	6.8	<b>6.8</b>	0.0	0.0%	0.0	0.0%
Retail Trade	327.4	328.6	<b>333.3</b>	5.9	1.8%	4.7	1.4%
Motor Vehicle and Parts Dealers	45.3	46.0	<b>46.0</b>	0.7	1.5%	0.0	0.0%
Furniture and Home Furnishings Stores	9.4	9.2	<b>9.2</b>	-0.2	-2.1%	0.0	0.0%
Building Material and Garden Supply Stores	31.2	31.5	<b>30.6</b>	-0.6	-1.9%	-0.9	-2.9%
Food and Beverage Stores	58.1	56.7	<b>57.6</b>	-0.5	-0.9%	0.9	1.6%
Health and Personal Care Stores	23.1	23.1	<b>23.5</b>	0.4	1.7%	0.4	1.7%
Gasoline Stations	24.0	24.4	<b>24.5</b>	0.5	2.1%	0.1	0.4%
Clothing and Clothing Accessories Stores	19.6	19.1	<b>19.8</b>	0.2	1.0%	0.7	3.7%
Sporting Goods, Hobby, Book, and Music Stores	11.1	11.5	<b>11.6</b>	0.5	4.5%	0.1	0.9%
General Merchandise Stores	70.6	69.1	<b>71.1</b>	0.5	0.7%	2.0	2.9%
Miscellaneous Store Retailers	16.7	18.5	<b>19.0</b>	2.3	13.8%	0.5	2.7%
Non-Store Retailers	8.0	7.7	<b>7.8</b>	-0.2	-2.5%	0.1	1.3%
Transportation, Warehousing, and Utilities	191.1	199.2	<b>199.9</b>	8.8	4.6%	0.7	0.4%
Utilities	3.7	3.7	<b>3.7</b>	0.0	0.0%	0.0	0.0%
Transportation and Warehousing	187.4	195.5	<b>196.2</b>	8.8	4.7%	0.7	0.4%
Information	43.4	44.9	<b>45.4</b>	2.0	4.6%	0.5	1.1%
Financial Activities	170.9	174.8	<b>174.6</b>	3.7	2.2%	-0.2	-0.1%
Finance and Insurance	131.7	132.3	<b>133.2</b>	1.5	1.1%	0.9	0.7%
Real Estate, Rental, and Leasing	39.2	42.5	<b>41.4</b>	2.2	5.6%	-1.1	-2.6%
Professional and Business Services	428.0	444.8	<b>450.8</b>	22.8	5.3%	6.0	1.3%
Professional, Scientific, and Technical Services	148.7	161.7	<b>161.6</b>	12.9	8.7%	-0.1	-0.1%
Management of Companies and Enterprises	50.1	50.2	<b>50.7</b>	0.6	1.2%	0.5	1.0%
Administrative, Support, and Waste Services	229.2	232.9	<b>238.5</b>	9.3	4.1%	5.6	2.4%
Education and Health Services	433.3	430.2	<b>428.8</b>	-4.5	-1.0%	-1.4	-0.3%
Educational Services	60.2	60.5	<b>61.8</b>	1.6	2.7%	1.3	2.1%
Health Care and Social Assistance	373.1	369.7	<b>367.0</b>	-6.1	-1.6%	-2.7	-0.7%
Ambulatory Health Care Services	153.4	154.5	<b>153.3</b>	-0.1	-0.1%	-1.2	-0.8%
Hospitals	109.1	110.1	<b>109.9</b>	0.8	0.7%	-0.2	-0.2%
Nursing and Residential Care Facilities	58.5	55.8	<b>55.4</b>	-3.1	-5.3%	-0.4	-0.7%
Social Assistance	52.1	49.3	<b>48.4</b>	-3.7	-7.1%	-0.9	-1.8%
Leisure and Hospitality	293.5	318.2	<b>316.7</b>	23.2	7.9%	-1.5	-0.5%
Arts, Entertainment, and Recreation	33.7	41.4	<b>40.7</b>	7.0	20.8%	-0.7	-1.7%

Accommodation and Food Services	259.8	276.8	<b>276.0</b>	16.2	6.2%	-0.8	-0.3%
Accommodation	26.7	33.4	<b>33.6</b>	6.9	25.8%	0.2	0.6%
Food Services and Drinking Places	233.1	243.4	<b>242.4</b>	9.3	4.0%	-1.0	-0.4%
<b>Other Services</b>	<b>118.7</b>	<b>122.9</b>	<b>123.3</b>	<b>4.6</b>	<b>3.9%</b>	<b>0.4</b>	<b>0.3%</b>
<b>Government</b>	<b>444.2</b>	<b>444.9</b>	<b>446.9</b>	<b>2.7</b>	<b>0.6%</b>	<b>2.0</b>	<b>0.4%</b>
Federal Government	52.7	51.8	<b>51.7</b>	-1.0	-1.9%	-0.1	-0.2%
State Government	100.3	99.5	<b>100.6</b>	0.3	0.3%	1.1	1.1%
State Government Educational Services	59.3	59.4	<b>60.6</b>	1.3	2.2%	1.2	2.0%
State Government Excluding Education	41.0	40.1	<b>40.0</b>	-1.0	-2.4%	-0.1	-0.2%
Local Government	291.2	293.6	<b>294.6</b>	3.4	1.2%	1.0	0.3%
Local Government Educational Services	142.1	145.5	<b>147.0</b>	4.9	3.4%	1.5	1.0%
Local Government Excluding Education	149.1	148.1	<b>147.6</b>	-1.5	-1.0%	-0.5	-0.3%

\* Estimates include all full- and part-time nonagricultural wage and salary employees who worked during, or received pay for, any part of the pay period which include the 12th of the month. This is a count of jobs by place of work. Agricultural workers, proprietors, self-employed persons, workers in private households, and unpaid family workers are excluded.

## Unemployment Rates, 2010-2021

### U.S. & Tennessee, Seasonally Adjusted & Not Seasonally Adjusted

	2010				2011				2012				2013			
	U.S.		TN		U.S.		TN		U.S.		TN		U.S.		TN	
	Seas. Adj.	Not Seas. Adj.	Seas. Adj.	Not Seas. Adj.	Seas. Adj.	Not Seas. Adj.	Seas. Adj.	Not Seas. Adj.	Seas. Adj.	Not Seas. Adj.	Seas. Adj.	Not Seas. Adj.	Seas. Adj.	Not Seas. Adj.	Seas. Adj.	Not Seas. Adj.
Jan	9.8	10.6	10.5 *	11.1 *	9.1	9.8	9.6 *	10.2 *	8.3	8.8	8.2	8.6	8.0	8.5	8.0 -	8.7 *
Feb	9.8	10.4	10.4 *	10.8 *	9.0	9.5	9.5 *	9.8 *	8.3	8.7	8.1	8.4	7.7	8.1	8.0 *	8.2 *
Mar	9.9	10.2	10.2 *	10.6 *	9.0	9.2	9.4 *	9.5 *	8.2	8.4	8.0	8.1	7.5	7.6	8.0 *	7.9 *
Apr	9.9	9.5	10.0 *	9.7 *	9.1	8.7	9.3 *	8.9 *	8.2	7.7	8.0	7.5	7.6	7.1	8.0 *	7.4 *
May	9.6	9.3	9.8 *	9.4 *	9.0	8.7	9.3 *	8.9 *	8.2	7.9	8.0	7.7	7.5	7.3	7.9 *	7.6 *
Jun	9.4	9.6	9.6 *	9.9 *	9.1	9.3	9.2 *	9.8 *	8.2	8.4	8.0	8.6 *	7.5	7.8	7.9 *	8.5 *
Jul	9.4	9.7	9.5 *	9.7 -	9.0	9.3	9.2 *	9.4 *	8.2	8.6	8.0	8.6 -	7.3	7.7	7.8 *	8.2 *
Aug	9.5	9.5	9.5 -	9.6 *	9.0	9.1	9.1 *	9.2 *	8.1	8.2	7.9	8.0	7.2	7.3	7.7 *	7.7 *
Sep	9.5	9.2	9.5 -	9.3 *	9.0	8.8	8.9	8.9 *	7.8	7.6	7.8 -	7.5	7.2	7.0	7.6 *	7.5 *
Oct	9.4	9.0	9.6	9.2 *	8.8	8.5	8.8 -	8.5 -	7.8	7.5	7.8 -	7.6 *	7.2	7.0	7.4 *	7.5 *
Nov	9.8	9.3	9.7	9.5 *	8.6	8.2	8.6 -	8.1	7.7	7.4	7.8 *	7.3	6.9	6.6	7.3 *	6.9 *
Dec	9.3	9.1	9.6 *	9.4 *	8.5	8.3	8.4	8.1	7.9	7.6	7.9 -	7.7 *	6.7	6.5	7.1 *	6.8 *
<b>Avg</b>		9.6		9.8 *		8.9		9.1 *		8.1		8.0		7.4		7.8 *

	2014				2015				2016				2017			
	U.S.		TN		U.S.		TN		U.S.		TN		U.S.		TN	
	Seas. Adj.	Not Seas. Adj.	Seas. Adj.	Not Seas. Adj.	Seas. Adj.	Not Seas. Adj.	Seas. Adj.	Not Seas. Adj.	Seas. Adj.	Not Seas. Adj.	Seas. Adj.	Not Seas. Adj.	Seas. Adj.	Not Seas. Adj.	Seas. Adj.	Not Seas. Adj.
Jan	6.6	7.0	6.9 *	7.1 *	5.7	6.1	6.1 *	6.6 *	4.8	5.3	4.8 -	5.0	4.7	5.1	4.6	5.0
Feb	6.7	7.0	6.8 *	7.1 *	5.5	5.8	6.1 *	6.2 *	4.9	5.2	4.7	4.8	4.6	4.9	4.4	4.6
Mar	6.7	6.8	6.8 *	6.9 *	5.4	5.6	6.0 *	5.9 *	5.0	5.1	4.7	4.7	4.4	4.6	4.1	4.1
Apr	6.2	5.9	6.7 *	6.0 *	5.4	5.1	5.9 *	5.3 *	5.1	4.7	4.6	4.3	4.5	4.1	3.9	3.4
May	6.3	6.1	6.7 *	6.3 *	5.6	5.3	5.8 *	5.6 *	4.8	4.5	4.7	4.2	4.4	4.1	3.7	3.2
Jun	6.1	6.3	6.7 *	7.1 *	5.3	5.5	5.7 *	6.2 *	4.9	5.1	4.7	5.2 *	4.3	4.5	3.5	4.1
Jul	6.2	6.5	6.6 *	7.3 *	5.2	5.6	5.5 *	6.0 *	4.8	5.1	4.8 -	5.2 *	4.3	4.6	3.5	3.9
Aug	6.1	6.3	6.6 *	6.9 *	5.1	5.2	5.4 *	5.5 *	4.9	5.0	4.8	5.0 -	4.4	4.5	3.4	3.6
Sep	5.9	5.7	6.5 *	6.4 *	5.0	4.9	5.3 *	5.2 *	5.0	4.8	4.9	4.9 *	4.2	4.1	3.4	3.2
Oct	5.7	5.5	6.4 *	6.1 *	5.0	4.8	5.1 *	5.0 *	4.9	4.7	4.9 -	4.7 -	4.1	3.9	3.4	3.2
Nov	5.8	5.5	6.3 *	6.1 *	5.1	4.8	5.0	4.9 *	4.7	4.4	4.8	4.5 *	4.2	3.9	3.5	3.2
Dec	5.6	5.4	6.2 *	5.9 *	5.0	4.8	4.9	4.7	4.7	4.5	4.7 -	4.5 -	4.1	3.9	3.5	3.2
<b>Avg</b>		6.2		6.6 *		5.3		5.6 *		4.9		4.7		4.4		3.7

	2018				2019				2020				2021			
	U.S.		TN		U.S.		TN		U.S.		TN		U.S.		TN	
	Seas. Adj.	Not Seas. Adj.	Seas. Adj.	Not Seas. Adj.	Seas. Adj.	Not Seas. Adj.	Seas. Adj.	Not Seas. Adj.	Seas. Adj.	Not Seas. Adj.	Seas. Adj.	Not Seas. Adj.	Seas. Adj.	Not Seas. Adj.	Seas. Adj.	Not Seas. Adj.
Jan	4.0	4.5	3.5	3.9	4.0	4.4	3.4	3.9	3.5	4.0	3.7 *	4.0 -	6.3	6.8	5.1	5.4
Feb	4.1	4.4	3.5	3.7	3.8	4.1	3.4	3.5	3.5	3.8	3.9 *	3.8 -	6.2	6.6	4.9	4.9
Mar	4.0	4.1	3.5	3.5	3.8	3.9	3.3	3.4	4.4	4.5	4.0	4.3	6.0	6.2	5.1	5.1
Apr	4.0	3.7	3.4	3.0	3.7	3.3	3.3	2.9	14.8	14.4	15.8 *	15.6 *	6.1	5.7	5.0	4.7
May	3.8	3.6	3.5	3.1	3.7	3.4	3.3	3.1	13.3	13.0	9.6	9.8	5.8	5.5	5.0	4.5
Jun	4.0	4.2	3.5	4.1	3.6	3.8	3.3	3.8 -	11.1	11.2	9.3	9.9	5.9	6.1	4.9	5.6
Jul	3.8	4.1	3.5	4.0	3.6	4.0	3.3	3.8	10.2	10.5	8.9	9.4	5.4	5.7	4.7	4.7
Aug	3.8	3.9	3.5	3.7	3.7	3.8	3.3	3.4	8.4	8.5	8.1	7.8	5.2	5.3	4.6	4.3
Sep	3.7	3.6	3.5	3.4	3.5	3.3	3.4	3.1	7.8	7.7	7.9 *	7.6	4.8	4.6	4.4	3.5
Oct	3.8	3.5	3.5	3.3	3.6	3.3	3.4	3.3 -	6.9	6.6	7.8 *	7.4 *	4.6	4.3	4.2	3.3
Nov	3.8	3.5	3.5	3.1	3.6	3.3	3.5	3.2	6.7	6.4	5.6	5.1				
Dec	3.9	3.7	3.4	3.1	3.6	3.4	3.6 -	3.3	6.7	6.5	5.6	5.6				
<b>Avg</b>		3.9		3.5		3.7		3.4		8.1		7.5				

\* Designates when Tennessee's unemployment rate is greater than the U.S. rate

- Designates when Tennessee's unemployment rate is equal to the U.S. rate



## HOURS AND EARNINGS OF PRODUCTION WORKERS

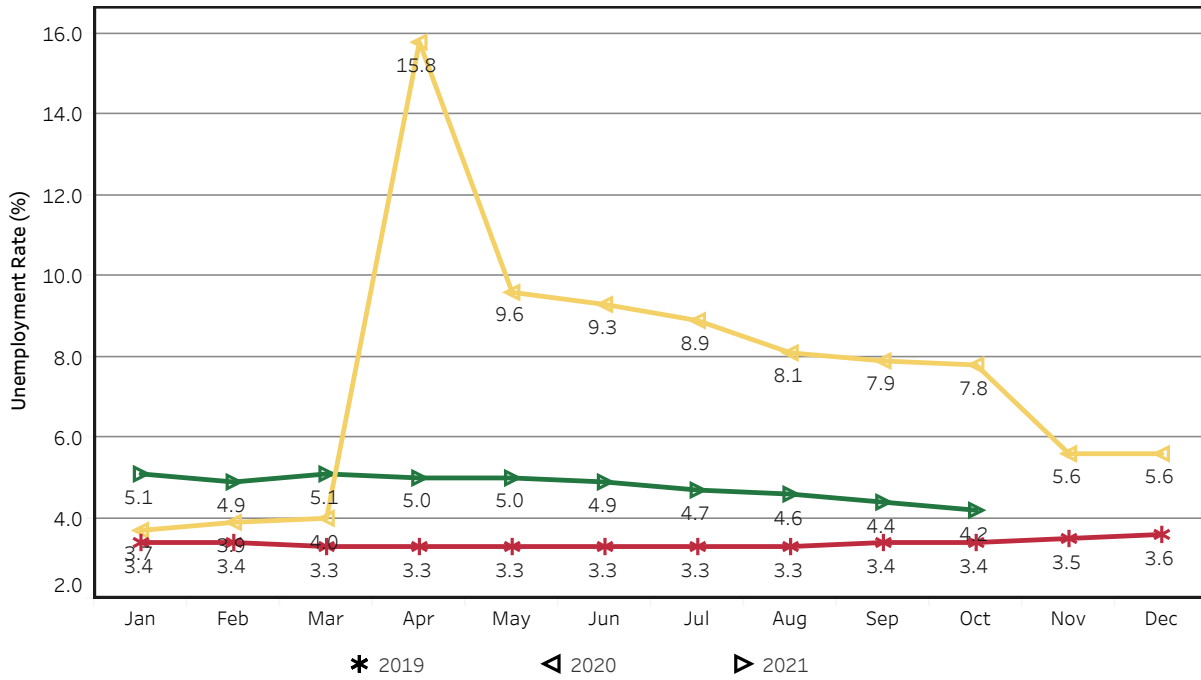
	Average Weekly Earning			Average Weekly Hours			Average Hourly Earning		
	October 2020	September 2021	October 2021	October 2020	September 2021	October 2021	October 2020	September 2021	October 2021
<b>Manufacturing</b>	\$814.43	\$923.67	\$917.09	40.1	42.1	41.8	\$20.31	\$21.94	\$21.94
<b>Durable Goods</b>	842.40	997.06	1003.10	39.0	43.2	43.2	21.60	23.08	23.22
<b>Non-Durable Goods</b>	769.02	797.57	767.14	42.0	40.2	39.3	18.31	19.84	19.52

### HOURS AND EARNINGS OF PRODUCTION WORKERS - ALL MANUFACTURING

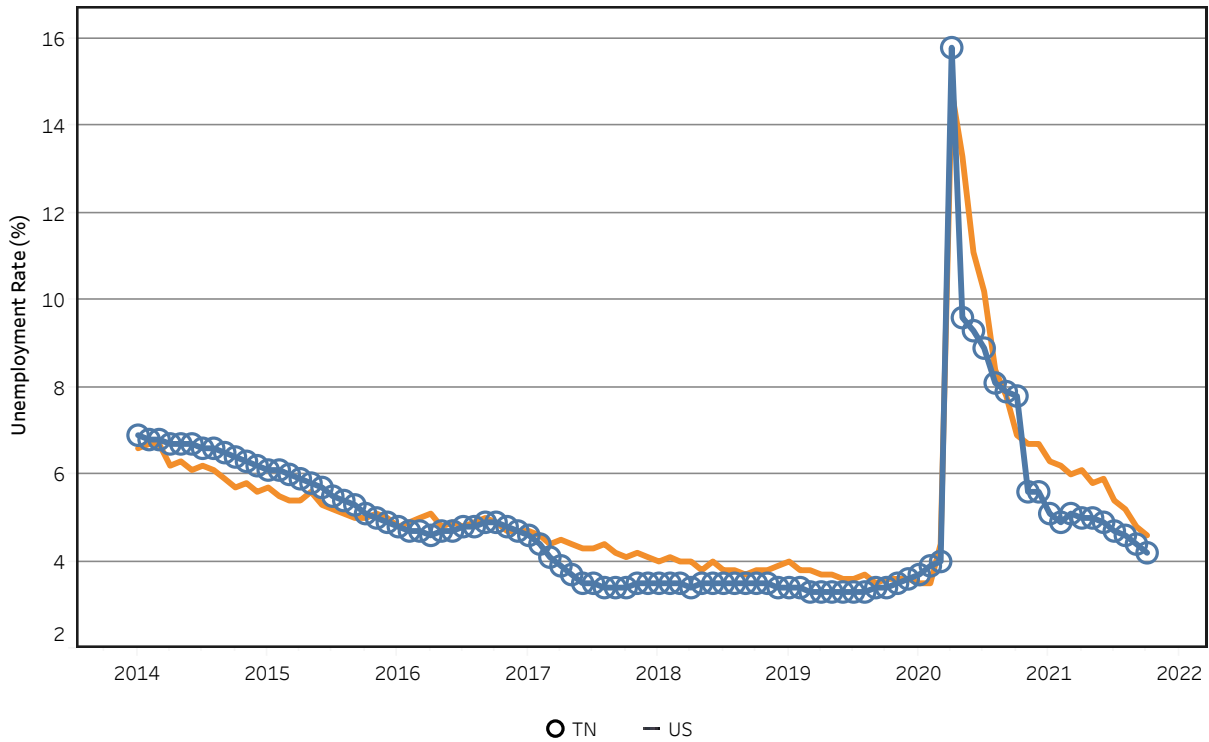
(ranked September 2021 preliminary average weekly earnings; October 2021 will be available later this month)

	Average Weekly Earning			Average Weekly Hours			Average Hourly Earning		
	September 2020	September 2021	Percent Change	September 2020	September 2021	Percent Change	September 2020	September 2021	Percent Change
<b>FLORIDA</b>	\$1007.9	\$1041.62	3.3%	41.60	40.80	-1.9%	\$24.23	\$25.53	5.4%
<b>SOUTH CAROLINA</b>	\$943.84	\$993.05	5.2%	41.80	40.90	-2.2%	\$22.58	\$24.28	7.5%
<b>KENTUCKY</b>	\$993.39	\$974.30	-1.9%	42.80	39.80	-7.0%	\$23.21	\$24.48	5.5%
<b>GEORGIA</b>	\$908.23	\$949.92	4.6%	42.60	42.20	-0.9%	\$21.32	\$22.51	5.6%
<b>ALABAMA</b>	\$863.05	\$932.51	8.0%	41.00	41.50	1.2%	\$21.05	\$22.47	6.7%
<b>TENNESSEE</b>	\$786.00	\$917.70	16.8%	38.10	42.00	10.2%	\$20.63	\$21.85	5.9%
<b>NORTH CAROLINA</b>	\$825.73	\$855.53	3.6%	43.30	42.50	-1.8%	\$19.07	\$20.13	5.6%
<b>VIRGINIA</b>	\$807.78	\$844.19	4.5%	39.50	41.10	4.1%	\$20.45	\$20.54	0.4%
<b>ARKANSAS</b>	\$731.86	\$823.77	12.6%	38.60	40.50	4.9%	\$18.96	\$20.34	7.3%
<b>MISSISSIPPI</b>	\$796.13	\$789.36	-0.9%	37.50	38.30	2.1%	\$21.23	\$20.61	-2.9%

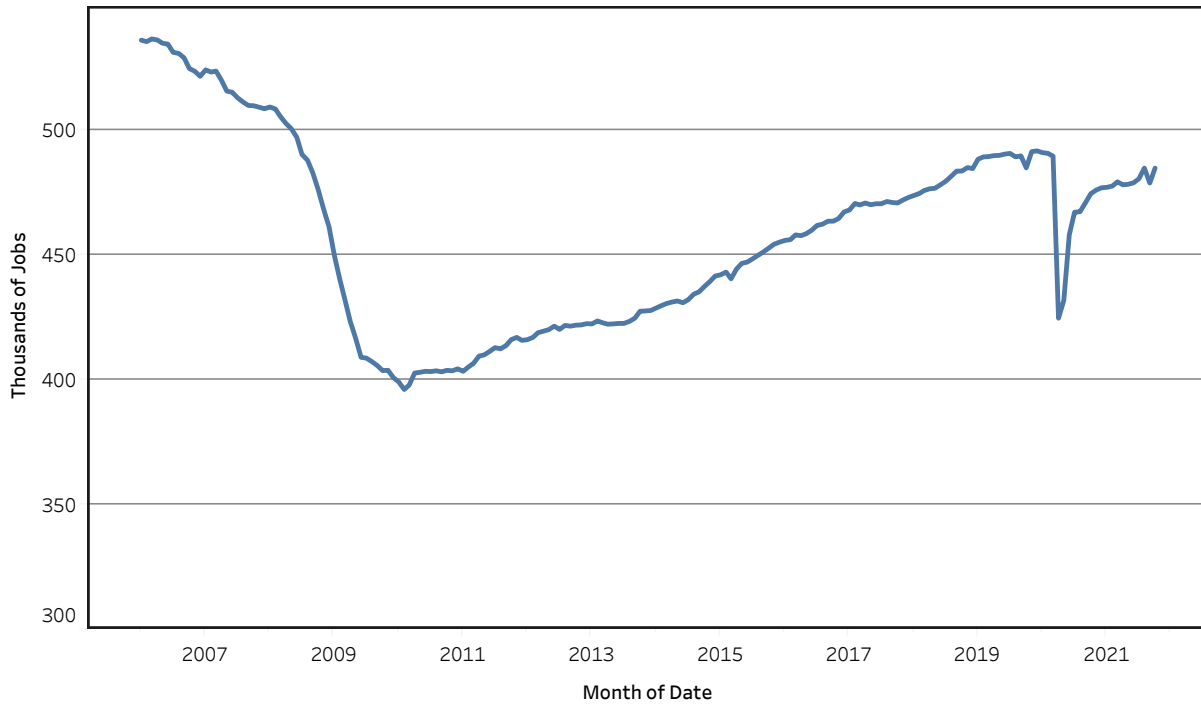
## Unemployment Rates - Tennessee Seasonally Adjusted - 2019 to 2021



## Unemployment Rates - US & Tennessee Seasonally Adjusted - January 2014 to October 2021



## Goods - Producing Jobs in Tennessee Seasonally Adjusted - Jan 2006 to Oct 2021



## Service - Providing Jobs in Tennessee Seasonally Adjusted - Jan 2006 to Oct 2021

