

TENNESSEE ECONOMIC ANALYSIS

February 2022

NOT TO BE RELEASED BEFORE:

TIME: 1:30 PM CT

DAY: Thursday, March 24, 2022

Prepared by:

Tennessee Department of Labor and Workforce Development

Workforce Insights, Research and Reporting Engine Division

Table of Contents

Economic Indicators

	<u>Page</u>
Briefing Packet Summary	1
Labor Force Estimates Summary - Household Survey	2
Seasonally Adjusted Nonfarm Employment	3
Major Changes in Seasonally Adjusted Nonfarm Employment	3
Business Survey - Not Seasonally Adjusted	4-5

Appendix

Unemployment Rates, 2011 - 2022	6
Hours and Earnings of Production Workers	7

Graphs

Tennessee Unemployment Rates	8
Unemployment Rates - U.S. and Tennessee	8
Goods - Producing Jobs in Tennessee	9
Service - Providing Jobs in Tennessee	9

BRIEFING PACKET SUMMARY

February 2022 pre.

Unemployment Rates

Tennessee	February 2021	January 2022 rev.	February 2022 pre.	Change From:	
				Year Ago	Month Ago
Not Seasonally Adjusted	5.2%	3.7%	3.3%	-1.9%	-0.4%
Seasonally Adjusted	5.0%	3.5%	3.4%	-1.6%	-0.1%

United States

Not Seasonally Adjusted	6.6%	4.4%	4.1%	-2.5%	-0.3%
Seasonally Adjusted	6.2%	4.0%	3.8%	-2.4%	-0.2%

Hours and Earnings of Production Workers (Manufacturing)

Tennessee	January 2022 rev.	February 2022 pre.	Change
Average Weekly Earnings	\$958.02	\$982.48	\$24.46
Average Weekly Hours	42.0	43.3	1.3
Average Hourly Earnings	\$22.81	\$22.69	\$-0.12

United States

Average Weekly Earnings	\$1004.10	\$1008.58	\$4.48
Average Weekly Hours	40.9	41.2	0.3
Average Hourly Earnings	\$24.55	\$24.48	\$-0.07

Summary

Tennessee's February seasonally adjusted unemployment rate decreased to 3.4% from the January revised rate of 3.5%.

Over the past year, Tennessee's seasonally adjusted unemployment rate decreased from 5.0% to 3.4% while the U.S. rate declined from 6.2% to 3.8%.

Total nonfarm employment increased 19,000 jobs from January to February. The largest increases were in construction, administrative, support & waste services, and accommodation & food services.

Over the year, nonfarm employment increased 129,500 jobs. The largest increases were in leisure & hospitality, trade, transportation & utilities, and professional & business services.

LABOR FORCE ESTIMATES SUMMARY

HOUSEHOLD SURVEY

Tennessee* Not Seasonally Adjusted	February 2021	Revised January 2022	Preliminary February 2022	Change from February 2021 to February 2022		Change from January 2022 to February 2022	
Civilian Labor Force	3,301,994	3,358,502	3,389,300	87,306	2.6%	30,798	0.9%
Labor Force Participation Rate	60.2%	60.5%	61.0%	0.8	percentage points	0.5	percentage points
Employment	3,131,094	3,233,986	3,276,604	145,510	4.6%	42,618	1.3%
Unemployment	170,900	124,516	112,696	-58,204	-34.1%	-11,820	-9.5%
Unemployment Rate	5.2%	3.7%	3.3%	-1.9	percentage points	-0.4	percentage points

Seasonally Adjusted

Civilian Labor Force	3,312,632	3,346,464	3,356,915	44,283	1.3%	10,451	0.3%
Labor Force Participation Rate	60.4%	60.3%	60.4%	0.0	percentage points	0.1	percentage points
Employment	3,146,330	3,229,716	3,242,989	96,659	3.1%	13,273	0.4%
Unemployment	166,302	116,748	113,926	-52,376	-31.5%	-2,822	-2.4%
Unemployment Rate	5.0%	3.5%	3.4%	-1.6	percentage points	-0.1	percentage points

United States** Not Seasonally Adjusted	February 2021	Revised January 2022	Preliminary February 2022	Change from February 2021 to February 2022		Change from January 2022 to February 2022	
Civilian Labor Force	160,008,000	162,825,000	163,725,000	3,717,000	2.3%	900,000	0.6%
Labor Force Participation Rate	61.3%	61.9%	62.2%	0.9	percentage points	0.3	percentage points
Employment	149,522,000	155,618,000	156,942,000	7,420,000	5.0%	1,324,000	0.9%
Unemployment	10,486,000	7,207,000	6,782,000	-3,704,000	-35.3%	-425,000	-5.9%
Unemployment Rate	6.6%	4.4%	4.1%	-2.5	percentage points	-0.3	percentage points

Seasonally Adjusted

Civilian Labor Force	160,359,000	163,687,000	163,991,000	3,632,000	2.3%	304,000	0.2%
Labor Force Participation Rate	61.5%	62.2%	62.3%	0.8	percentage points	0.1	percentage points
Employment	150,367,000	157,174,000	157,722,000	7,355,000	4.9%	548,000	0.3%
Unemployment	9,992,000	6,513,000	6,270,000	-3,722,000	-37.2%	-243,000	-3.7%
Unemployment Rate	6.2%	4.0%	3.8%	-2.4	percentage points	-0.2	percentage points

* Error range for Tennessee estimates cannot be computed

** Error range for U.S. estimates is +/- 0.2%

Seasonally Adjusted Nonfarm Employment

(numbers in thousands)

Annual Change Monthly Change

	February 2021	January 2022 rev.	February 2022 pre.	February 2021 to February 2022		January 2022 to February 2022	
				Net Chg.	% chg.	Net Chg.	% chg.
				Total Non-Farm	3,062.7	3,173.2	3,192.2
Mining, Logging and Construction	138.0	143.3	147.9	9.9	7.2%	4.6	3.2%
Mining and Logging	4.2	4.3	4.3	0.1	2.4%	0.0	0.0%
Construction	133.8	139.0	143.6	9.8	7.3%	4.6	3.3%
Manufacturing	346.1	356.4	359.0	12.9	3.7%	2.6	0.7%
Durable Goods Manufacturing	218.9	229.7	230.9	12.0	5.5%	1.2	0.5%
Non-Durable Goods Manufacturing	127.2	126.7	128.1	0.9	0.7%	1.4	1.1%
Trade, Transportation, and Utilities	649.4	671.5	674.5	25.1	3.9%	3.0	0.4%
Wholesale Trade	118.3	125.3	125.4	7.1	6.0%	0.1	0.1%
Retail Trade	333.3	342.4	344.3	11.0	3.3%	1.9	0.6%
Transportation, Warehousing, and Utilities	197.8	203.8	204.8	7.0	3.5%	1.0	0.5%
Information	44.2	49.7	49.8	5.6	12.7%	0.1	0.2%
Financial Activities	170.4	175.7	176.2	5.8	3.4%	0.5	0.3%
Finance and Insurance	130.2	133.1	133.7	3.5	2.7%	0.6	0.5%
Real Estate, Rental, and Leasing	40.2	42.6	42.5	2.3	5.7%	-0.1	-0.2%
Professional and Business Services	432.1	442.2	445.8	13.7	3.2%	3.6	0.8%
Professional, Scientific, and Technical Services	153.3	163.5	163.8	10.5	6.8%	0.3	0.2%
Management of Companies and Enterprises	50.6	53.5	53.7	3.1	6.1%	0.2	0.4%
Administrative, Support, and Waste Services	228.2	225.2	228.3	0.1	0.0%	3.1	1.4%
Education and Health Services	436.6	439.6	439.4	2.8	0.6%	-0.2	0.0%
Educational Services	59.9	61.6	60.8	0.9	1.5%	-0.8	-1.3%
Health Care and Social Assistance	376.7	378.0	378.6	1.9	0.5%	0.6	0.2%
Leisure and Hospitality	298.7	340.2	343.3	44.6	14.9%	3.1	0.9%
Arts, Entertainment, and Recreation	34.7	43.3	44.4	9.7	28.0%	1.1	2.5%
Accommodation and Food Services	264.0	296.9	298.9	34.9	13.2%	2.0	0.7%
Other Services	120.1	125.7	126.2	6.1	5.1%	0.5	0.4%
Government	427.1	428.9	430.1	3.0	0.7%	1.2	0.3%
Federal Government	51.5	52.2	51.9	0.4	0.8%	-0.3	-0.6%
State Government	94.1	92.9	94.0	-0.1	-0.1%	1.1	1.2%
Local Government	281.5	283.8	284.2	2.7	1.0%	0.4	0.1%

Major Changes in Seasonally Adjusted Nonfarm Employment (in thousands)

I. Monthly Change (from January 2022 rev. to February 2022 pre.)

	January 2022 rev.	February 2022 pre.	Change
A. Major Employment Increases			
Construction	139.0	143.6	4.6
Administrative, Support, and Waste Services	225.2	228.3	3.1
Accommodation and Food Services	296.9	298.9	2.0
B. Major Employment Decreases			
Educational Services	61.6	60.8	-0.8
Federal Government	52.2	51.9	-0.3
Real Estate, Rental, and Leasing	42.6	42.5	-0.1

II. Yearly Change (from February 2021 to February 2022 pre.)

	February 2021	February 2022 pre.	Change
A. Major Employment Increases			
Leisure and Hospitality	298.7	343.3	44.6
Trade, Transportation, and Utilities	649.4	674.5	25.1
Professional and Business Services	432.1	445.8	13.7
B. Major Employment Decreases			
State Government	94.1	94.0	-0.1

BUSINESS SURVEY - Not Seasonally Adjusted

Estimated Nonfarm Employment by Industry*

(numbers in thousands)	February 2021	January 2022 rev.	February 2022 pre.	Annual Change		Monthly Change	
				February 2021 to February 2022		January 2022 to February 2022	
				Net Chg.	% chg.	Net Chg.	% chg.
Total Non-Farm	3,040.8	3,136.7	3,173.0	132.2	4.3%	36.3	1.2%
Total Private	2,604.7	2,708.2	2,735.2	130.5	5.0%	27.0	1.0%
Goods Producing	479.3	495.3	502.9	23.6	4.9%	7.6	1.5%
Mining, Logging and Construction	133.8	140.3	143.8	10.0	7.5%	3.5	2.5%
Manufacturing	345.5	355.0	359.1	13.6	3.9%	4.1	1.2%
Durable Goods Manufacturing	218.7	229.2	230.8	12.1	5.5%	1.6	0.7%
Wood Products	12.9	13.8	13.9	1.0	7.8%	0.1	0.7%
Non-Metallic Mineral Products	13.6	14.3	14.5	0.9	6.6%	0.2	1.4%
Primary Metal Products	11.0	11.5	11.6	0.6	5.5%	0.1	0.9%
Fabricated Metal Products	38.4	41.5	42.0	3.6	9.4%	0.5	1.2%
Machinery Manufacturing	23.6	24.9	25.1	1.5	6.4%	0.2	0.8%
Computer and Electronic Products	6.4	6.5	6.5	0.1	1.6%	0.0	0.0%
Electrical Equipment and Appliances	17.8	19.2	19.3	1.5	8.4%	0.1	0.5%
Transportation Equipment	69.3	70.4	70.6	1.3	1.9%	0.2	0.3%
Furniture and Related Products	9.6	10.2	10.3	0.7	7.3%	0.1	1.0%
Miscellaneous Durable Manufacturing	16.1	16.9	17.0	0.9	5.6%	0.1	0.6%
Non-Durable Goods Manufacturing	126.8	125.8	128.3	1.5	1.2%	2.5	2.0%
Food Manufacturing	37.3	36.8	37.5	0.2	0.5%	0.7	1.9%
Beverage and Tobacco Products	7.8	8.3	8.4	0.6	7.7%	0.1	1.2%
Paper Manufacturing	12.2	12.0	12.2	0.0	0.0%	0.2	1.7%
Printing and Related Support Activities	7.9	8.0	8.1	0.2	2.5%	0.1	1.3%
Chemical Manufacturing	26.1	25.7	26.1	0.0	0.0%	0.4	1.6%
Plastics and Rubber Products	24.2	24.0	24.6	0.4	1.7%	0.6	2.5%
Service Providing	2,561.5	2,641.4	2,670.1	108.6	4.2%	28.7	1.1%
Private Service Providing (Service Providing Less Government)	2,125.4	2,212.9	2,232.3	106.9	5.0%	19.4	0.9%
Trade, Transportation, and Utilities	644.1	669.0	670.0	25.9	4.0%	1.0	0.1%
Wholesale Trade	118.0	124.5	124.9	6.9	5.8%	0.4	0.3%
Merchant wholesalers, Durable Goods	69.5	73.0	73.4	3.9	5.6%	0.4	0.5%
Merchant wholesalers, Non-Durable Goods	41.7	44.2	44.2	2.5	6.0%	0.0	0.0%
Wholesale Electronic Markets	6.8	7.3	7.3	0.5	7.4%	0.0	0.0%
Retail Trade	330.3	341.7	342.1	11.8	3.6%	0.4	0.1%
Motor Vehicle and Parts Dealers	46.1	46.8	46.8	0.7	1.5%	0.0	0.0%
Furniture and Home Furnishings Stores	9.7	10.3	10.4	0.7	7.2%	0.1	1.0%
Building Material and Garden Supply Stores	31.3	32.4	32.8	1.5	4.8%	0.4	1.2%
Food and Beverage Stores	57.4	55.8	56.5	-0.9	-1.6%	0.7	1.3%
Health and Personal Care Stores	24.4	26.8	27.0	2.6	10.7%	0.2	0.7%
Gasoline Stations	23.6	24.1	24.3	0.7	3.0%	0.2	0.8%
Clothing and Clothing Accessories Stores	18.8	21.9	21.4	2.6	13.8%	-0.5	-2.3%
Sporting Goods, Hobby, Book, and Music Stores	10.9	11.7	11.5	0.6	5.5%	-0.2	-1.7%
General Merchandise Stores	73.9	76.0	75.5	1.6	2.2%	-0.5	-0.7%
Miscellaneous Store Retailers	16.6	18.2	18.2	1.6	9.6%	0.0	0.0%
Non-Store Retailers	8.2	8.4	8.4	0.2	2.4%	0.0	0.0%
Transportation, Warehousing, and Utilities	195.8	202.8	203.0	7.2	3.7%	0.2	0.1%
Utilities	3.8	3.9	3.9	0.1	2.6%	0.0	0.0%
Transportation and Warehousing	192.0	198.9	199.1	7.1	3.7%	0.2	0.1%
Information	44.0	49.0	49.7	5.7	13.0%	0.7	1.4%
Financial Activities	169.5	174.7	175.2	5.7	3.4%	0.5	0.3%
Finance and Insurance	130.1	132.5	133.5	3.4	2.6%	1.0	0.8%
Real Estate, Rental, and Leasing	39.4	42.2	41.7	2.3	5.8%	-0.5	-1.2%
Professional and Business Services	426.8	435.7	441.2	14.4	3.4%	5.5	1.3%
Professional, Scientific, and Technical Services	154.2	163.1	165.0	10.8	7.0%	1.9	1.2%
Management of Companies and Enterprises	50.4	53.2	53.7	3.3	6.5%	0.5	0.9%
Administrative, Support, and Waste Services	222.2	219.4	222.5	0.3	0.1%	3.1	1.4%
Education and Health Services	438.3	435.9	441.0	2.7	0.6%	5.1	1.2%
Educational Services	63.0	60.1	63.0	0.0	0.0%	2.9	4.8%
Health Care and Social Assistance	375.3	375.8	378.0	2.7	0.7%	2.2	0.6%
Ambulatory Health Care Services	156.4	158.6	160.0	3.6	2.3%	1.4	0.9%
Hospitals	109.3	109.9	109.8	0.5	0.5%	-0.1	-0.1%
Nursing and Residential Care Facilities	57.3	55.9	55.6	-1.7	-3.0%	-0.3	-0.5%
Social Assistance	52.3	51.4	52.6	0.3	0.6%	1.2	2.3%
Leisure and Hospitality	283.9	325.0	330.5	46.6	16.4%	5.5	1.7%
Arts, Entertainment, and Recreation	28.5	37.5	39.4	10.9	38.2%	1.9	5.1%

Accommodation and Food Services	255.4	287.5	291.1	35.7	14.0%	3.6	1.3%
Accommodation	25.5	32.9	32.9	7.4	29.0%	0.0	0.0%
Food Services and Drinking Places	229.9	254.6	258.2	28.3	12.3%	3.6	1.4%
Other Services	118.8	123.6	124.7	5.9	5.0%	1.1	0.9%
Government	436.1	428.5	437.8	1.7	0.4%	9.3	2.2%
Federal Government	51.3	52.1	51.6	0.3	0.6%	-0.5	-1.0%
State Government	98.4	88.3	97.1	-1.3	-1.3%	8.8	10.0%
State Government Educational Services	57.7	48.6	57.6	-0.1	-0.2%	9.0	18.5%
State Government Excluding Education	40.7	39.7	39.5	-1.2	-2.9%	-0.2	-0.5%
Local Government	286.4	288.1	289.1	2.7	0.9%	1.0	0.3%
Local Government Educational Services	142.9	145.5	146.6	3.7	2.6%	1.1	0.8%
Local Government Excluding Education	143.5	142.6	142.5	-1.0	-0.7%	-0.1	-0.1%

* Estimates include all full- and part-time nonagricultural wage and salary employees who worked during, or received pay for, any part of the pay period which include the 12th of the month. This is a count of jobs by place of work. Agricultural workers, proprietors, self-employed persons, workers in private households, and unpaid family workers are excluded.

Unemployment Rates, 2011-2022

U.S. & Tennessee, Seasonally Adjusted & Not Seasonally Adjusted

	2011				2012				2013				2014			
	U.S.		TN		U.S.		TN		U.S.		TN		U.S.		TN	
	Seas. Adj.	Not Seas. Adj.	Seas. Adj.	Not Seas. Adj.	Seas. Adj.	Not Seas. Adj.	Seas. Adj.	Not Seas. Adj.	Seas. Adj.	Not Seas. Adj.	Seas. Adj.	Not Seas. Adj.	Seas. Adj.	Not Seas. Adj.	Seas. Adj.	Not Seas. Adj.
Jan	9.1	9.8	9.6 *	10.2 *	8.3	8.8	8.2	8.6	8.0	8.5	8.0 -	8.7 *	6.6	7.0	6.9 *	7.1 *
Feb	9.0	9.5	9.5 *	9.8 *	8.3	8.7	8.1	8.4	7.7	8.1	8.0 *	8.2 *	6.7	7.0	6.8 *	7.1 *
Mar	9.0	9.2	9.4 *	9.5 *	8.2	8.4	8.0	8.1	7.5	7.6	8.0 *	7.9 *	6.7	6.8	6.8 *	6.9 *
Apr	9.1	8.7	9.3 *	8.9 *	8.2	7.7	8.0	7.5	7.6	7.1	8.0 *	7.4 *	6.2	5.9	6.7 *	6.0 *
May	9.0	8.7	9.3 *	8.9 *	8.2	7.9	8.0	7.7	7.5	7.3	7.9 *	7.6 *	6.3	6.1	6.7 *	6.3 *
Jun	9.1	9.3	9.2 *	9.8 *	8.2	8.4	8.0	8.6 *	7.5	7.8	7.9 *	8.5 *	6.1	6.3	6.7 *	7.1 *
Jul	9.0	9.3	9.2 *	9.4 *	8.2	8.6	8.0	8.6 -	7.3	7.7	7.8 *	8.2 *	6.2	6.5	6.6 *	7.3 *
Aug	9.0	9.1	9.1 *	9.2 *	8.1	8.2	7.9	8.0	7.2	7.3	7.7 *	7.7 *	6.1	6.3	6.6 *	6.9 *
Sep	9.0	8.8	8.9	8.9 *	7.8	7.6	7.8 -	7.5	7.2	7.0	7.6 *	7.5 *	5.9	5.7	6.5 *	6.4 *
Oct	8.8	8.5	8.8 -	8.5 -	7.8	7.5	7.8 -	7.6 *	7.2	7.0	7.4 *	7.5 *	5.7	5.5	6.4 *	6.1 *
Nov	8.6	8.2	8.6 -	8.1	7.7	7.4	7.8 *	7.3	6.9	6.6	7.3 *	6.9 *	5.8	5.5	6.3 *	6.1 *
Dec	8.5	8.3	8.4	8.1	7.9	7.6	7.9 -	7.7 *	6.7	6.5	7.1 *	6.8 *	5.6	5.4	6.2 *	5.9 *
Avg		8.9		9.1 *		8.1		8.0		7.4		7.8 *		6.2		6.6 *

	2015				2016				2017				2018			
	U.S.		TN		U.S.		TN		U.S.		TN		U.S.		TN	
	Seas. Adj.	Not Seas. Adj.	Seas. Adj.	Not Seas. Adj.	Seas. Adj.	Not Seas. Adj.	Seas. Adj.	Not Seas. Adj.	Seas. Adj.	Not Seas. Adj.	Seas. Adj.	Not Seas. Adj.	Seas. Adj.	Not Seas. Adj.	Seas. Adj.	Not Seas. Adj.
Jan	5.7	6.1	6.1 *	6.6 *	4.8	5.3	4.8 -	5.0	4.7	5.1	4.6	5.0	4.0	4.5	3.5	3.8
Feb	5.5	5.8	6.1 *	6.2 *	4.9	5.2	4.7	4.8	4.6	4.9	4.4	4.6	4.1	4.4	3.5	3.7
Mar	5.4	5.6	6.0 *	5.9 *	5.0	5.1	4.7	4.7	4.4	4.6	4.2	4.1	4.0	4.1	3.5	3.5
Apr	5.4	5.1	5.9 *	5.3 *	5.1	4.7	4.6	4.3	4.4	4.1	3.9	3.4	4.0	3.7	3.5	3.0
May	5.6	5.3	5.8 *	5.6 *	4.8	4.5	4.7	4.2	4.4	4.1	3.7	3.2	3.8	3.6	3.5	3.1
Jun	5.3	5.5	5.7 *	6.2 *	4.9	5.1	4.7	5.2 *	4.3	4.5	3.6	4.1	4.0	4.2	3.5	4.1
Jul	5.2	5.6	5.5 *	6.0 *	4.8	5.1	4.8 -	5.2 *	4.3	4.6	3.5	3.9	3.8	4.1	3.5	3.9
Aug	5.1	5.2	5.4 *	5.5 *	4.9	5.0	4.8	5.0 -	4.4	4.5	3.4	3.6	3.8	3.9	3.5	3.6
Sep	5.0	4.9	5.3 *	5.2 *	5.0	4.8	4.9	4.9 *	4.3	4.1	3.4	3.2	3.7	3.6	3.5	3.4
Oct	5.0	4.8	5.1 *	5.0 *	4.9	4.7	4.9 -	4.7 -	4.2	3.9	3.4	3.3	3.8	3.5	3.5	3.4
Nov	5.1	4.8	5.0	4.9 *	4.7	4.4	4.8 *	4.5 *	4.2	3.9	3.4	3.2	3.8	3.5	3.5	3.1
Dec	5.0	4.8	4.9	4.7	4.7	4.5	4.7 -	4.5 -	4.1	3.9	3.5	3.2	3.9	3.7	3.5	3.2
Avg		5.3		5.6 *		4.9		4.7		4.4		3.7		3.9		3.5

	2019				2020				2021				2022			
	U.S.		TN		U.S.		TN		U.S.		TN		U.S.		TN	
	Seas. Adj.	Not Seas. Adj.	Seas. Adj.	Not Seas. Adj.	Seas. Adj.	Not Seas. Adj.	Seas. Adj.	Not Seas. Adj.	Seas. Adj.	Not Seas. Adj.	Seas. Adj.	Not Seas. Adj.	Seas. Adj.	Not Seas. Adj.	Seas. Adj.	Not Seas. Adj.
Jan	4.0	4.4	3.5	3.9	3.5	4.0	3.6 *	3.8	6.4	6.8	5.2	5.6	4.0	4.4	3.5	3.7
Feb	3.8	4.1	3.4	3.5	3.5	3.8	3.6 *	3.6	6.2	6.6	5.0	5.2	3.8	4.1	3.4	3.3
Mar	3.8	3.9	3.4	3.5	4.4	4.5	3.6	4.0	6.0	6.2	4.9	4.9				
Apr	3.6	3.3	3.4	2.9	14.7	14.4	15.9 *	15.3 *	6.0	5.7	4.8	4.4				
May	3.6	3.4	3.3	3.1	13.2	13.0	12.1	11.8	5.8	5.5	4.6	4.3				
Jun	3.6	3.8	3.3	3.9 *	11.0	11.2	10.1	10.6	5.9	6.1	4.4	5.3				
Jul	3.7	4.0	3.3	3.7	10.2	10.5	8.8	9.8	5.4	5.7	4.2	4.6				
Aug	3.7	3.8	3.3	3.3	8.4	8.5	7.5	7.5	5.2	5.3	4.0	4.1				
Sep	3.5	3.3	3.4	3.1	7.9	7.7	6.9	6.6	4.7	4.6	3.8	3.6				
Oct	3.6	3.3	3.4	3.3 -	6.9	6.6	6.1	5.8	4.6	4.3	3.7	3.3				
Nov	3.6	3.3	3.5	3.2	6.7	6.4	5.7	5.2	4.2	3.9	3.6	3.1				
Dec	3.6	3.4	3.6 -	3.3	6.7	6.5	5.5	5.2	3.9	3.7	3.6	3.1				
Avg		3.7		3.4		8.1		7.4		5.3		4.3				

* Designates when Tennessee's unemployment rate is greater than the U.S. rate

- Designates when Tennessee's unemployment rate is equal to the U.S. rate

HOURS AND EARNINGS OF PRODUCTION WORKERS

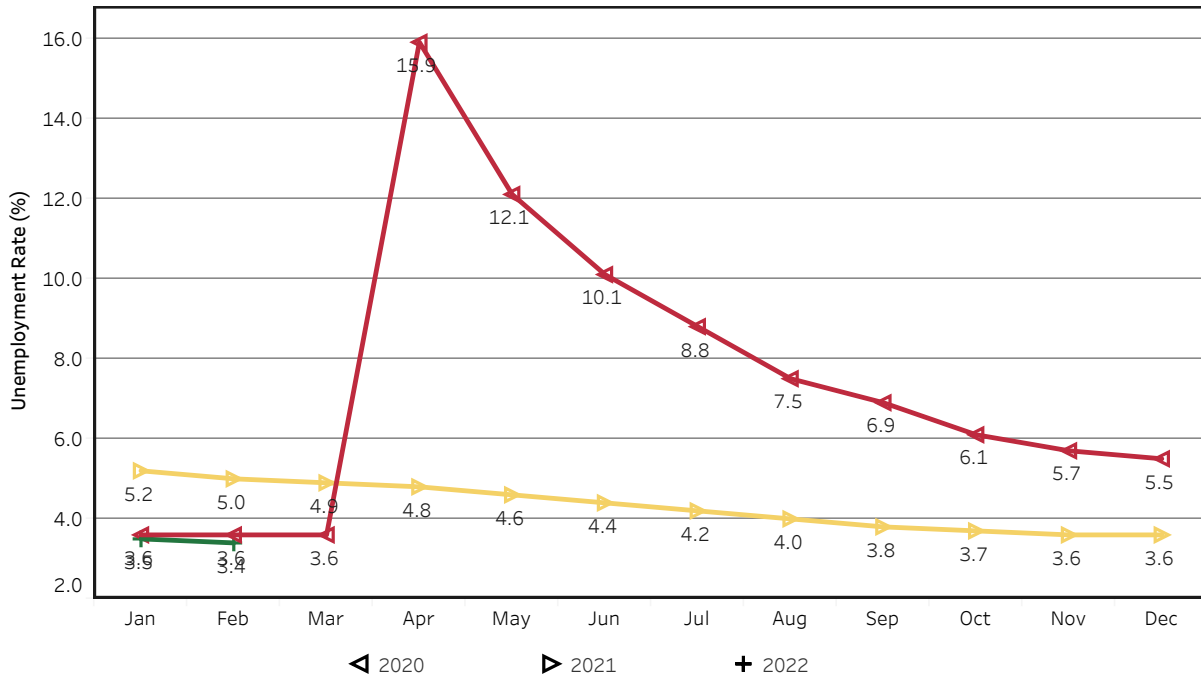
	Average Weekly Earning			Average Weekly Hours			Average Hourly Earning		
	February 2021	January 2022	February 2022	February 2021	January 2022	February 2022	February 2021	January 2022	February 2022
Manufacturing	\$866.06	\$958.02	\$982.48	41.3	42.0	43.3	\$20.97	\$22.81	\$22.69
Durable Goods	945.10	985.01	1014.36	42.4	41.3	42.8	22.29	23.85	23.70
Non-Durable Goods	733.52	912.76	926.10	39.5	43.3	44.1	18.57	21.08	21.00

HOURS AND EARNINGS OF PRODUCTION WORKERS - ALL MANUFACTURING

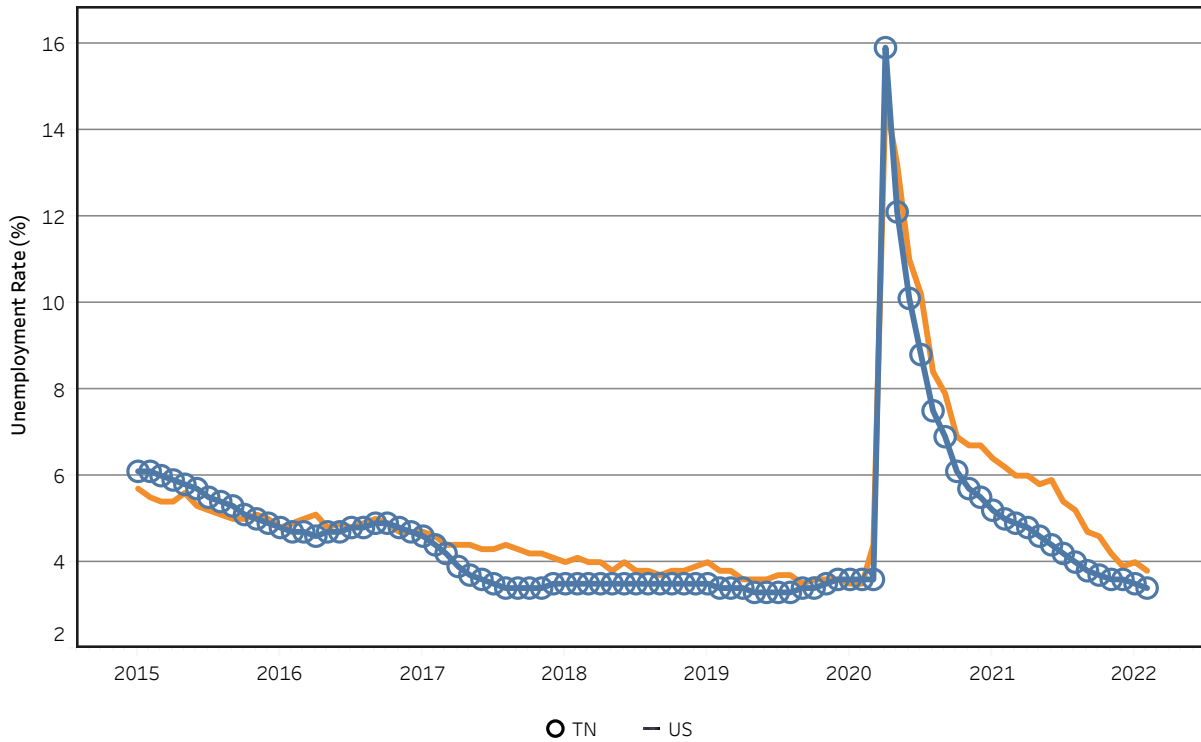
(ranked January 2022 preliminary average weekly earnings; February 2022 will be available later this month)

	Average Weekly Earning			Average Weekly Hours			Average Hourly Earning		
	January 2021	January 2022	Percent Change	January 2021	January 2022	Percent Change	January 2021	January 2022	Percent Change
FLORIDA	\$972.60	\$1087.38	11.8%	40.90	42.00	2.7%	\$23.78	\$25.89	8.9%
SOUTH CAROLINA	\$919.22	\$990.10	7.7%	40.80	41.10	0.7%	\$22.53	\$24.09	6.9%
KENTUCKY	\$954.03	\$979.00	2.6%	41.30	39.70	-3.9%	\$23.10	\$24.66	6.8%
TENNESSEE	\$874.82	\$961.38	9.9%	41.50	42.00	1.2%	\$21.08	\$22.89	8.6%
GEORGIA	\$918.45	\$958.41	4.4%	41.90	41.40	-1.2%	\$21.92	\$23.15	5.6%
ALABAMA	\$870.26	\$915.96	5.3%	41.50	40.80	-1.7%	\$20.97	\$22.45	7.1%
VIRGINIA	\$891.34	\$867.39	-2.7%	41.40	40.40	-2.4%	\$21.53	\$21.47	-0.3%
NORTH CAROLINA	\$803.07	\$846.56	5.4%	42.20	40.70	-3.6%	\$19.03	\$20.80	9.3%
MISSISSIPPI	\$833.78	\$827.84	-0.7%	39.20	39.80	1.5%	\$21.27	\$20.80	-2.2%
ARKANSAS	\$767.14	\$803.99	4.8%	39.20	39.90	1.8%	\$19.57	\$20.15	3.0%

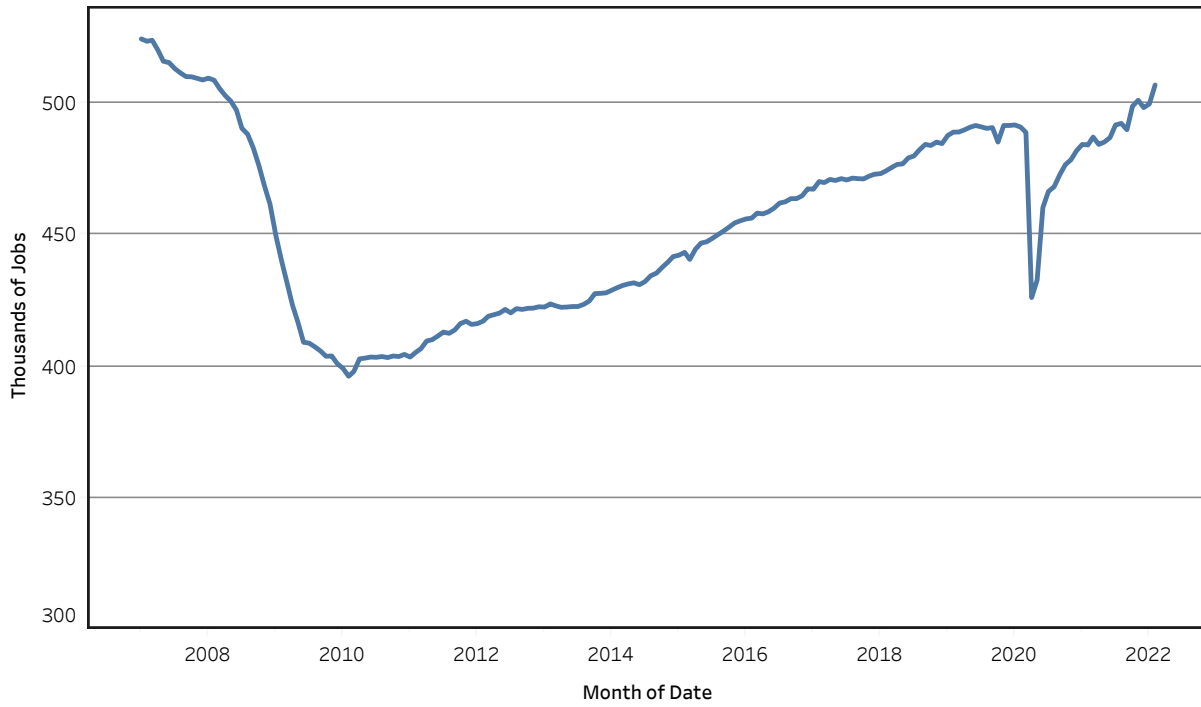
Unemployment Rates - Tennessee Seasonally Adjusted - 2020 to 2022



Unemployment Rates - US & Tennessee Seasonally Adjusted - January 2015 to February 2022



Goods - Producing Jobs in Tennessee Seasonally Adjusted - Jan 2007 to Feb 2022



Service - Providing Jobs in Tennessee Seasonally Adjusted - Jan 2007 to Feb 2022

