

# **TENNESSEE ECONOMIC ANALYSIS**

**March 2021**

## **NOT TO BE RELEASED BEFORE:**

TIME: 1:30 PM CT

DAY: Thursday, April 15, 2021

**Prepared by:**

**Tennessee Department of Labor and Workforce Development**

**Workforce Insights, Research and Reporting Engine Division**

## Table of Contents

### Economic Indicators

	<u>Page</u>
Briefing Packet Summary	1
Labor Force Estimates Summary - Household Survey	2
Seasonally Adjusted Nonfarm Employment	3
Major Changes in Seasonally Adjusted Nonfarm Employment	3
Business Survey - Not Seasonally Adjusted	4-5

### Appendix

Unemployment Rates, 2010 - 2021	6
Hours and Earnings of Production Workers	7

### Graphs

Tennessee Unemployment Rates	8
Unemployment Rates - U.S. and Tennessee	8
Goods - Producing Jobs in Tennessee	9
Service - Providing Jobs in Tennessee	9

## BRIEFING PACKET SUMMARY

March 2021 pre.

### Unemployment Rates

Tennessee	March 2020	February 2021 rev.	March 2021 pre.	Change From:	
				Year Ago	Month Ago
Not Seasonally Adjusted	4.3%	4.9%	<b>5.1%</b>	0.8%	0.2%
Seasonally Adjusted	4.0%	4.9%	<b>5.0%</b>	1.0%	0.1%

#### United States

Not Seasonally Adjusted	4.5%	6.6%	<b>6.2%</b>	1.7%	-0.4%
Seasonally Adjusted	4.4%	6.2%	<b>6.0%</b>	1.6%	-0.2%

### Hours and Earnings of Production Workers (Manufacturing)

Tennessee	February 2021 rev.	March 2021 pre.	Change
Average Weekly Earnings	\$866.89	\$873.18	\$6.29
Average Weekly Hours	41.3	42.0	0.7
Average Hourly Earnings	\$20.99	\$20.79	-\$0.20

#### United States

Average Weekly Earnings	\$953.25	\$966.54	\$13.29
Average Weekly Hours	41.0	41.5	0.5
Average Hourly Earnings	\$23.25	\$23.29	\$0.04

### Summary

Tennessee's March seasonally adjusted unemployment rate increased to 5.0% from the February revised rate of 4.9%.

Over the past year, Tennessee's seasonally adjusted unemployment rate increased from 4.0% to 5.0% while the national rate increased from 4.4% to 6.0%.

Total nonfarm employment increased 15,400 jobs from February to March. The largest increases occurred in trade/transportation/utilities, leisure/hospitality and government.

Over the year, nonfarm employment decreased 84,300 jobs. The largest decreases occurred in leisure/hospitality, education/health services, and government.

## LABOR FORCE ESTIMATES SUMMARY

<b>Tennessee*</b> Not Seasonally Adjusted	March 2020	Revised February 2021	<b>Preliminary March 2021</b>	Change from March 2020 to March 2021		Change from February 2021 to March 2021	
Civilian Labor Force	3,306,102	3,298,451	<b>3,298,593</b>	-7,509	-0.2%	142	0.0%
Labor Force Participation Rate	61.0%	60.3%	<b>60.2%</b>	-0.8	percentage points	-0.1	percentage points
Employment	3,163,283	3,138,065	<b>3,131,260</b>	-32,023	-1.0%	-6,805	-0.2%
Unemployment	142,819	160,386	<b>167,333</b>	24,514	17.2%	6,947	4.3%
Unemployment Rate	4.3%	4.9%	<b>5.1%</b>	0.8	percentage points	0.2	percentage points

### Seasonally Adjusted

Civilian Labor Force	3,328,051	3,308,398	<b>3,314,748</b>	-13,303	-0.4%	6,350	0.2%
Labor Force Participation Rate	61.4%	60.4%	<b>60.5%</b>	-0.9	percentage points	0.1	percentage points
Employment	3,193,850	3,146,088	<b>3,148,044</b>	-45,806	-1.4%	1,956	0.1%
Unemployment	134,201	162,310	<b>166,704</b>	32,503	24.2%	4,394	2.7%
Unemployment Rate	4.0%	4.9%	<b>5.0%</b>	1.0	percentage points	0.1	percentage points

<b>United States**</b> Not Seasonally Adjusted	March 2020	Revised February 2021	<b>Preliminary March 2021</b>	Change from March 2020 to March 2021		Change from February 2021 to March 2021	
Civilian Labor Force	162,537,000	160,008,000	<b>160,397,000</b>	-2,140,000	-1.3%	389,000	0.2%
Labor Force Participation Rate	62.6%	61.3%	<b>61.5%</b>	-1.1	percentage points	0.2	percentage points
Employment	155,167,000	149,522,000	<b>150,493,000</b>	-4,674,000	-3.0%	971,000	0.6%
Unemployment	7,370,000	10,486,000	<b>9,905,000</b>	2,535,000	34.4%	-581,000	-5.5%
Unemployment Rate	4.5%	6.6%	<b>6.2%</b>	1.7	percentage points	-0.4	percentage points

### Seasonally Adjusted

Civilian Labor Force	162,721,000	160,211,000	<b>160,558,000</b>	-2,163,000	-1.3%	347,000	0.2%
Labor Force Participation Rate	62.6%	61.4%	<b>61.5%</b>	-1.1	percentage points	0.1	percentage points
Employment	155,536,000	150,239,000	<b>150,848,000</b>	-4,688,000	-3.0%	609,000	0.4%
Unemployment	7,185,000	9,972,000	<b>9,710,000</b>	2,525,000	35.1%	-262,000	-2.6%
Unemployment Rate	4.4%	6.2%	<b>6.0%</b>	1.6	percentage points	-0.2	percentage points

\* Error range for Tennessee estimates cannot be computed

\*\* Error range for U.S. estimates is +/- 0.2%

## Seasonally Adjusted Nonfarm Employment

(numbers in thousands)

Annual Change      Monthly Change

	March 2020	February 2021 rev.	March 2021 pre.	March 2020 to March 2021		February 2021 to March 2021	
				Net Chg.	% chg.	Net Chg.	% chg.
				Total Non-Farm	3,139.2	3,039.5	<b>3,054.9</b>
Mining, Logging, and Construction	136.0	132.4	<b>133.0</b>	-3.0	-2.2%	0.6	0.5%
Mining and Logging	4.2	4.3	<b>4.1</b>	-0.1	-2.4%	-0.2	-4.7%
Construction	131.8	128.1	<b>128.9</b>	-2.9	-2.2%	0.8	0.6%
Manufacturing	353.8	345.4	<b>346.8</b>	-7.0	-2.0%	1.4	0.4%
Durable Goods Manufacturing	225.6	219.6	<b>221.0</b>	-4.6	-2.0%	1.4	0.6%
Non-Durable Goods Manufacturing	128.2	125.8	<b>125.8</b>	-2.4	-1.9%	0.0	0.0%
Trade, Transportation, and Utilities	640.9	642.8	<b>649.6</b>	8.7	1.4%	6.8	1.1%
Wholesale Trade	121.7	117.0	<b>118.8</b>	-2.9	-2.4%	1.8	1.5%
Retail Trade	332.8	328.6	<b>331.6</b>	-1.2	-0.4%	3.0	0.9%
Transportation, Warehousing, and Utilities	186.4	197.2	<b>199.2</b>	12.8	6.9%	2.0	1.0%
Information	45.8	43.5	<b>43.5</b>	-2.3	-5.0%	0.0	0.0%
Financial Activities	174.8	169.9	<b>169.7</b>	-5.1	-2.9%	-0.2	-0.1%
Finance and Insurance	132.4	131.4	<b>131.2</b>	-1.2	-0.9%	-0.2	-0.2%
Real Estate, Rental, and Leasing	42.4	38.5	<b>38.5</b>	-3.9	-9.2%	0.0	0.0%
Professional and Business Services	431.4	432.5	<b>433.9</b>	2.5	0.6%	1.4	0.3%
Professional, Scientific, and Technical Services	148.5	153.5	<b>154.3</b>	5.8	3.9%	0.8	0.5%
Management of Companies and Enterprises	52.2	50.3	<b>50.2</b>	-2.0	-3.8%	-0.1	-0.2%
Administrative, Support, and Waste Services	230.7	228.7	<b>229.4</b>	-1.3	-0.6%	0.7	0.3%
Education and Health Services	447.0	429.8	<b>429.2</b>	-17.8	-4.0%	-0.6	-0.1%
Educational Services	60.9	56.3	<b>57.0</b>	-3.9	-6.4%	0.7	1.2%
Health Care and Social Assistance	386.1	373.5	<b>372.2</b>	-13.9	-3.6%	-1.3	-0.3%
Leisure and Hospitality	343.1	296.9	<b>300.0</b>	-43.1	-12.6%	3.1	1.0%
Arts, Entertainment, and Recreation	42.3	37.2	<b>38.0</b>	-4.3	-10.2%	0.8	2.2%
Accommodation and Food Services	300.8	259.7	<b>262.0</b>	-38.8	-12.9%	2.3	0.9%
Other Services	123.7	119.7	<b>120.1</b>	-3.6	-2.9%	0.4	0.3%
Government	442.7	426.6	<b>429.1</b>	-13.6	-3.1%	2.5	0.6%
Federal Government	50.5	51.4	<b>51.5</b>	1.0	2.0%	0.1	0.2%
State Government	98.6	94.2	<b>95.5</b>	-3.1	-3.1%	1.3	1.4%
Local Government	293.6	281.0	<b>282.1</b>	-11.5	-3.9%	1.1	0.4%

### Major Changes in Seasonally Adjusted Nonfarm Employment (in thousands)

#### I. Monthly Change (from February 2021 rev. to March 2021 pre.)

	February 2021 rev.	March 2021 pre.	Change
<b>A. Major Employment Increases</b>			
Trade, Transportation, and Utilities	642.8	649.6	6.8
Leisure and Hospitality	296.9	300.0	3.1
Government	426.6	429.1	2.5
<b>B. Major Employment Decreases</b>			
Health Care and Social Assistance	373.5	372.2	-1.3
Mining and Logging	4.3	4.1	-0.2
Finance and Insurance	131.4	131.2	-0.2

#### II. Yearly Change (from March 2020 to March 2021 pre.)

	March 2020	March 2021 pre.	Change
<b>A. Major Employment Increases</b>			
Transportation, Warehousing, and Utilities	186.4	199.2	12.8
Professional, Scientific, and Technical Services	148.5	154.3	5.8
Federal Government	50.5	51.5	1.0
<b>B. Major Employment Decreases</b>			
Leisure and Hospitality	343.1	300.0	-43.1
Education and Health Services	447.0	429.2	-17.8
Government	442.7	429.1	-13.6

**BUSINESS SURVEY - Not Seasonally Adjusted**

Estimated Nonfarm Employment by Industry\*

(numbers in thousands)	March 2020	February 2021 rev.	March 2021 pre.	Annual Change		Monthly Change	
				March 2020 to March 2021		February 2021 to March 2021	
				Net Chg.	% chg.	Net Chg.	% chg.
Total Non-Farm	3,127.7	3,023.6	<b>3,045.7</b>	-82.0	-2.6%	22.1	0.7%
Total Private	2,675.4	2,589.2	<b>2,607.1</b>	-68.3	-2.6%	17.9	0.7%
Goods Producing	486.4	475.6	<b>478.9</b>	-7.5	-1.5%	3.3	0.7%
Mining, Logging, and Construction	133.5	129.0	<b>131.5</b>	-2.0	-1.5%	2.5	1.9%
Manufacturing	352.9	346.6	<b>347.4</b>	-5.5	-1.6%	0.8	0.2%
Durable Goods Manufacturing	225.0	220.7	<b>221.4</b>	-3.6	-1.6%	0.7	0.3%
Wood Products	12.8	12.8	<b>12.8</b>	0.0	0.0%	0.0	0.0%
Non-Metallic Mineral Products	14.2	13.9	<b>14.0</b>	-0.2	-1.4%	0.1	0.7%
Primary Metal Products	11.4	10.8	<b>10.8</b>	-0.6	-5.3%	0.0	0.0%
Fabricated Metal Products	37.8	38.0	<b>38.1</b>	0.3	0.8%	0.1	0.3%
Machinery Manufacturing	24.6	24.2	<b>24.4</b>	-0.2	-0.8%	0.2	0.8%
Computer and Electronic Products	6.1	6.2	<b>6.3</b>	0.2	3.3%	0.1	1.6%
Electrical Equipment and Appliances	17.5	17.4	<b>17.4</b>	-0.1	-0.6%	0.0	0.0%
Transportation Equipment	73.8	71.4	<b>71.5</b>	-2.3	-3.1%	0.1	0.1%
Furniture and Related Products	9.8	9.8	<b>9.8</b>	0.0	0.0%	0.0	0.0%
Miscellaneous Durable Manufacturing	17.0	16.2	<b>16.3</b>	-0.7	-4.1%	0.1	0.6%
Non-Durable Goods Manufacturing	127.9	125.9	<b>126.0</b>	-1.9	-1.5%	0.1	0.1%
Food Manufacturing	36.3	36.1	<b>36.2</b>	-0.1	-0.3%	0.1	0.3%
Beverage and Tobacco Products	7.6	7.5	<b>7.5</b>	-0.1	-1.3%	0.0	0.0%
Paper Manufacturing	12.8	12.7	<b>12.7</b>	-0.1	-0.8%	0.0	0.0%
Printing and Related Support Activities	9.0	7.8	<b>7.8</b>	-1.2	-13.3%	0.0	0.0%
Chemical Manufacturing	25.8	25.8	<b>25.8</b>	0.0	0.0%	0.0	0.0%
Plastics and Rubber Products	24.8	24.1	<b>24.1</b>	-0.7	-2.8%	0.0	0.0%
Service Providing	2,641.3	2,548.0	<b>2,566.8</b>	-74.5	-2.8%	18.8	0.7%
Private Service Providing (Service Providing Less Government)	2,189.0	2,113.6	<b>2,128.2</b>	-60.8	-2.8%	14.6	0.7%
Trade, Transportation, and Utilities	634.8	638.3	<b>643.5</b>	8.7	1.4%	5.2	0.8%
Wholesale Trade	121.7	116.5	<b>118.7</b>	-3.0	-2.5%	2.2	1.9%
Merchant wholesalers, Durable Goods	71.7	69.1	<b>70.0</b>	-1.7	-2.4%	0.9	1.3%
Merchant wholesalers, Non-Durable Goods	43.0	40.6	<b>41.9</b>	-1.1	-2.6%	1.3	3.2%
Wholesale Electronic Markets	7.0	6.8	<b>6.8</b>	-0.2	-2.9%	0.0	0.0%
Retail Trade	329.6	326.7	<b>327.9</b>	-1.7	-0.5%	1.2	0.4%
Motor Vehicle and Parts Dealers	46.7	45.3	<b>46.0</b>	-0.7	-1.5%	0.7	1.5%
Furniture and Home Furnishings Stores	10.1	9.3	<b>9.4</b>	-0.7	-6.9%	0.1	1.1%
Building Material and Garden Supply Stores	30.9	30.8	<b>31.8</b>	0.9	2.9%	1.0	3.2%
Food and Beverage Stores	54.8	58.2	<b>57.7</b>	2.9	5.3%	-0.5	-0.9%
Health and Personal Care Stores	23.5	23.4	<b>23.4</b>	-0.1	-0.4%	0.0	0.0%
Gasoline Stations	23.7	23.8	<b>24.1</b>	0.4	1.7%	0.3	1.3%
Clothing and Clothing Accessories Stores	22.4	19.4	<b>19.5</b>	-2.9	-12.9%	0.1	0.5%
Sporting Goods, Hobby, Book, and Music Stores	11.4	11.2	<b>11.1</b>	-0.3	-2.6%	-0.1	-0.9%
General Merchandise Stores	70.2	69.1	<b>68.9</b>	-1.3	-1.9%	-0.2	-0.3%
Miscellaneous Store Retailers	17.2	17.4	<b>17.2</b>	0.0	0.0%	-0.2	-1.1%
Non-Store Retailers	8.4	7.9	<b>7.9</b>	-0.5	-6.0%	0.0	0.0%
Transportation, Warehousing, and Utilities	183.5	195.1	<b>196.9</b>	13.4	7.3%	1.8	0.9%
Utilities	3.6	3.7	<b>3.7</b>	0.1	2.8%	0.0	0.0%
Transportation and Warehousing	179.9	191.4	<b>193.2</b>	13.3	7.4%	1.8	0.9%
Information	45.1	43.4	<b>43.4</b>	-1.7	-3.8%	0.0	0.0%
Financial Activities	173.9	168.6	<b>169.1</b>	-4.8	-2.8%	0.5	0.3%
Finance and Insurance	132.1	131.1	<b>130.8</b>	-1.3	-1.0%	-0.3	-0.2%
Real Estate, Rental, and Leasing	41.8	37.5	<b>38.3</b>	-3.5	-8.4%	0.8	2.1%
Professional and Business Services	426.1	428.2	<b>429.7</b>	3.6	0.8%	1.5	0.4%
Professional, Scientific, and Technical Services	149.3	155.0	<b>156.5</b>	7.2	4.8%	1.5	1.0%
Management of Companies and Enterprises	51.8	50.2	<b>49.8</b>	-2.0	-3.9%	-0.4	-0.8%
Administrative, Support, and Waste Services	225.0	223.0	<b>223.4</b>	-1.6	-0.7%	0.4	0.2%
Education and Health Services	449.8	431.9	<b>430.1</b>	-19.7	-4.4%	-1.8	-0.4%
Educational Services	64.3	58.8	<b>58.9</b>	-5.4	-8.4%	0.1	0.2%
Health Care and Social Assistance	385.5	373.1	<b>371.2</b>	-14.3	-3.7%	-1.9	-0.5%
Ambulatory Health Care Services	156.8	157.1	<b>156.2</b>	-0.6	-0.4%	-0.9	-0.6%
Hospitals	110.3	108.9	<b>108.7</b>	-1.6	-1.5%	-0.2	-0.2%
Nursing and Residential Care Facilities	62.8	56.3	<b>55.8</b>	-7.0	-11.1%	-0.5	-0.9%
Social Assistance	55.6	50.8	<b>50.5</b>	-5.1	-9.2%	-0.3	-0.6%
Leisure and Hospitality	336.1	285.0	<b>292.9</b>	-43.2	-12.9%	7.9	2.8%
Arts, Entertainment, and Recreation	38.6	31.4	<b>34.2</b>	-4.4	-11.4%	2.8	8.9%

Accommodation and Food Services	297.5	253.6	<b>258.7</b>	-38.8	-13.0%	5.1	2.0%
Accommodation	39.2	26.7	<b>28.3</b>	-10.9	-27.8%	1.6	6.0%
Food Services and Drinking Places	258.3	226.9	<b>230.4</b>	-27.9	-10.8%	3.5	1.5%
<b>Other Services</b>	<b>123.2</b>	<b>118.2</b>	<b>119.5</b>	<b>-3.7</b>	<b>-3.0%</b>	<b>1.3</b>	<b>1.1%</b>
<b>Government</b>	<b>452.3</b>	<b>434.4</b>	<b>438.6</b>	<b>-13.7</b>	<b>-3.0%</b>	<b>4.2</b>	<b>1.0%</b>
Federal Government	50.3	51.1	<b>51.2</b>	0.9	1.8%	0.1	0.2%
State Government	102.7	97.3	<b>99.4</b>	-3.3	-3.2%	2.1	2.2%
State Government Educational Services	61.4	56.6	<b>58.8</b>	-2.6	-4.2%	2.2	3.9%
State Government Excluding Education	41.3	40.7	<b>40.6</b>	-0.7	-1.7%	-0.1	-0.2%
Local Government	299.3	286.0	<b>288.0</b>	-11.3	-3.8%	2.0	0.7%
Local Government Educational Services	148.1	141.8	<b>143.4</b>	-4.7	-3.2%	1.6	1.1%
Local Government Excluding Education	151.2	144.2	<b>144.6</b>	-6.6	-4.4%	0.4	0.3%

\* Estimates include all full- and part-time nonagricultural wage and salary employees who worked during, or received pay for, any part of the pay period which include the 12th of the month. This is a count of jobs by place of work. Agricultural workers, proprietors, self-employed persons, workers in private households, and unpaid family workers are excluded.

## Unemployment Rates, 2010-2021

### U.S. Tennessee, Seasonally Adjusted & Not Seasonally Adjusted

	2010				2011				2012				2013			
	U.S.		TN		U.S.		TN		U.S.		TN		U.S.		TN	
	Seas. Adj.	Not Seas. Adj.	Seas. Adj.	Not Seas. Adj.	Seas. Adj.	Not Seas. Adj.	Seas. Adj.	Not Seas. Adj.	Seas. Adj.	Not Seas. Adj.	Seas. Adj.	Not Seas. Adj.	Seas. Adj.	Not Seas. Adj.	Seas. Adj.	Not Seas. Adj.
Jan	9.8	10.6	10.5 *	11.1 *	9.1	9.8	9.6 *	10.2 *	8.3	8.8	8.2	8.6	8.0	8.5	8.0 -	8.7 *
Feb	9.8	10.4	10.4 *	10.8 *	9.0	9.5	9.5 *	9.8 *	8.3	8.7	8.1	8.4	7.7	8.1	8.0 *	8.2 *
Mar	9.9	10.2	10.2 *	10.6 *	9.0	9.2	9.4 *	9.5 *	8.2	8.4	8.0	8.1	7.5	7.6	8.0 *	7.9 *
Apr	9.9	9.5	10.0 *	9.7 *	9.1	8.7	9.3 *	8.9 *	8.2	7.7	8.0	7.5	7.6	7.1	8.0 *	7.4 *
May	9.6	9.3	9.8 *	9.4 *	9.0	8.7	9.3 *	8.9 *	8.2	7.9	8.0	7.7	7.5	7.3	7.9 *	7.6 *
Jun	9.4	9.6	9.6 *	9.9 *	9.1	9.3	9.2 *	9.8 *	8.2	8.4	8.0	8.6 *	7.5	7.8	7.9 *	8.5 *
Jul	9.4	9.7	9.5 *	9.7 -	9.0	9.3	9.2 *	9.4 *	8.2	8.6	8.0	8.6 -	7.3	7.7	7.8 *	8.2 *
Aug	9.5	9.5	9.5 -	9.6 *	9.0	9.1	9.1 *	9.2 *	8.1	8.2	7.9	8.0	7.2	7.3	7.7 *	7.7 *
Sep	9.5	9.2	9.5 -	9.3 *	9.0	8.8	8.9	8.9 *	7.8	7.6	7.8 -	7.5	7.2	7.0	7.6 *	7.5 *
Oct	9.4	9.0	9.6	9.2 *	8.8	8.5	8.8 -	8.5 -	7.8	7.5	7.8 -	7.6 *	7.2	7.0	7.4 *	7.5 *
Nov	9.8	9.3	9.7	9.5 *	8.6	8.2	8.6 -	8.1	7.7	7.4	7.8 *	7.3	6.9	6.6	7.3 *	6.9 *
Dec	9.3	9.1	9.6 *	9.4 *	8.5	8.3	8.4	8.1	7.9	7.6	7.9 -	7.7 *	6.7	6.5	7.1 *	6.8 *
Avg		9.6		9.8 *		8.9		9.1 *		8.1		8.0		7.4		7.8 *

	2014				2015				2016				2017			
	U.S.		TN		U.S.		TN		U.S.		TN		U.S.		TN	
	Seas. Adj.	Not Seas. Adj.	Seas. Adj.	Not Seas. Adj.	Seas. Adj.	Not Seas. Adj.	Seas. Adj.	Not Seas. Adj.	Seas. Adj.	Not Seas. Adj.	Seas. Adj.	Not Seas. Adj.	Seas. Adj.	Not Seas. Adj.	Seas. Adj.	Not Seas. Adj.
Jan	6.6	7.0	6.9 *	7.1 *	5.7	6.1	6.1 *	6.6 *	4.8	5.3	4.8 -	5.0	4.7	5.1	4.6	5.0
Feb	6.7	7.0	6.8 *	7.1 *	5.5	5.8	6.1 *	6.2 *	4.9	5.2	4.7	4.8	4.6	4.9	4.4	4.6
Mar	6.7	6.8	6.8 *	6.9 *	5.4	5.6	6.0 *	5.9 *	5.0	5.1	4.7	4.7	4.4	4.6	4.1	4.1
Apr	6.2	5.9	6.7 *	6.0 *	5.4	5.1	5.9 *	5.3 *	5.1	4.7	4.6	4.3	4.5	4.1	3.9	3.4
May	6.3	6.1	6.7 *	6.3 *	5.6	5.3	5.8 *	5.6 *	4.8	4.5	4.7	4.2	4.4	4.1	3.7	3.2
Jun	6.1	6.3	6.7 *	7.1 *	5.3	5.5	5.7 *	6.2 *	4.9	5.1	4.7	5.2 *	4.3	4.5	3.5	4.1
Jul	6.2	6.5	6.6 *	7.3 *	5.2	5.6	5.5 *	6.0 *	4.8	5.1	4.8 -	5.2 *	4.3	4.6	3.5	3.9
Aug	6.1	6.3	6.6 *	6.9 *	5.1	5.2	5.4 *	5.5 *	4.9	5.0	4.8	5.0 -	4.4	4.5	3.4	3.6
Sep	5.9	5.7	6.5 *	6.4 *	5.0	4.9	5.3 *	5.2 *	5.0	4.8	4.9	4.9 *	4.2	4.1	3.4	3.2
Oct	5.7	5.5	6.4 *	6.1 *	5.0	4.8	5.1 *	5.0 *	4.9	4.7	4.9 -	4.7 -	4.1	3.9	3.4	3.2
Nov	5.8	5.5	6.3 *	6.1 *	5.1	4.8	5.0	4.9 *	4.7	4.4	4.8	4.5 *	4.2	3.9	3.5	3.2
Dec	5.6	5.4	6.2 *	5.9 *	5.0	4.8	4.9	4.7	4.7	4.5	4.7 -	4.5 -	4.1	3.9	3.5	3.2
Avg		6.2		6.6 *		5.3		5.6 *		4.9		4.7		4.4		3.7

	2018				2019				2020				2021			
	U.S.		TN		U.S.		TN		U.S.		TN		U.S.		TN	
	Seas. Adj.	Not Seas. Adj.	Seas. Adj.	Not Seas. Adj.	Seas. Adj.	Not Seas. Adj.	Seas. Adj.	Not Seas. Adj.	Seas. Adj.	Not Seas. Adj.	Seas. Adj.	Not Seas. Adj.	Seas. Adj.	Not Seas. Adj.	Seas. Adj.	Not Seas. Adj.
Jan	4.0	4.5	3.5	3.9	4.0	4.4	3.4	3.9	3.5	4.0	3.7 *	4.0 -	6.3	6.8	5.1	5.4
Feb	4.1	4.4	3.5	3.7	3.8	4.1	3.4	3.5	3.5	3.8	3.9 *	3.8 -	6.2	6.6	4.9	4.9
Mar	4.0	4.1	3.5	3.5	3.8	3.9	3.3	3.4	4.4	4.5	4.0	4.3	6.0	6.2	5.0	5.1
Apr	4.0	3.7	3.4	3.0	3.7	3.3	3.3	2.9	14.8	14.4	15.8 *	15.6 *				
May	3.8	3.6	3.5	3.1	3.7	3.4	3.3	3.1	13.3	13.0	9.6	9.8				
Jun	4.0	4.2	3.5	4.1	3.6	3.8	3.3	3.8 -	11.1	11.2	9.3	9.9				
Jul	3.8	4.1	3.5	4.0	3.6	4.0	3.3	3.8	10.2	10.5	8.9	9.4				
Aug	3.8	3.9	3.5	3.7	3.7	3.8	3.3	3.4	8.4	8.5	8.1	7.8				
Sep	3.7	3.6	3.5	3.4	3.5	3.3	3.4	3.1	7.8	7.7	7.9 *	7.6				
Oct	3.8	3.5	3.5	3.3	3.6	3.3	3.4	3.3 -	6.9	6.6	7.8 *	7.4 *				
Nov	3.8	3.5	3.5	3.1	3.6	3.3	3.5	3.2	6.7	6.4	5.6	5.1				
Dec	3.9	3.7	3.4	3.1	3.6	3.4	3.6 -	3.3	6.7	6.5	5.6	5.6				
Avg		3.9		3.5		3.7		3.4		8.1		7.5				

\* Designates when Tennessee's unemployment rate is greater than the U.S. rate  
 - Designates when Tennessee's unemployment rate is equal to the U.S. rate



## HOURS AND EARNINGS OF PRODUCTION WORKERS

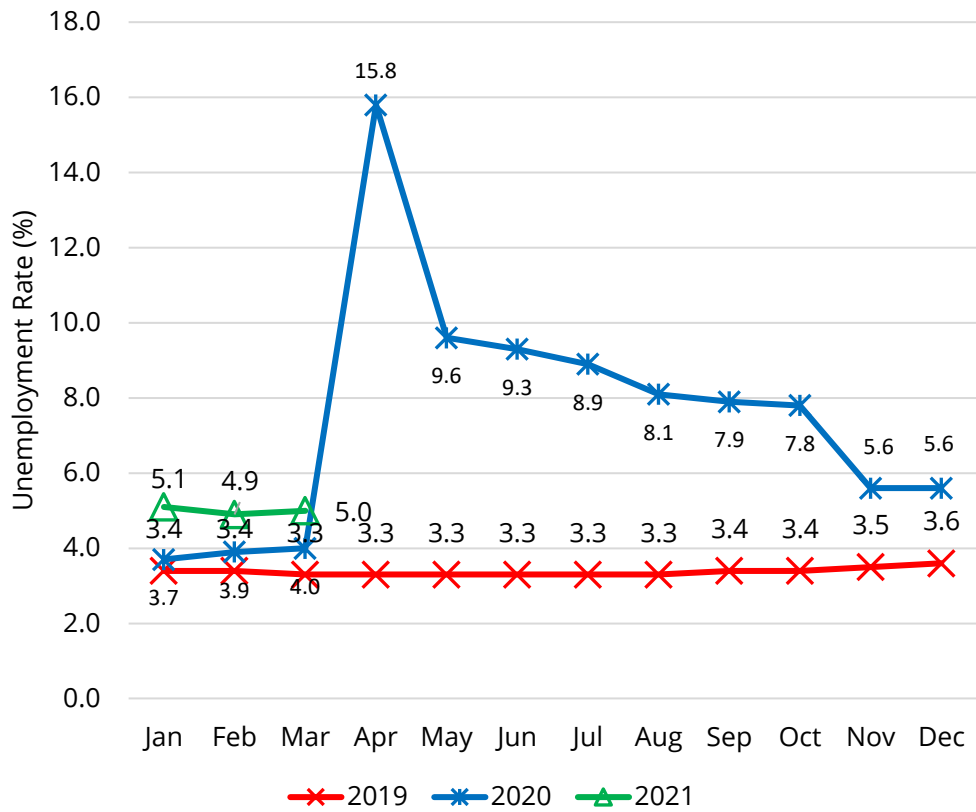
	Average Weekly Earning			Average Weekly Hours			Average Hourly Earning		
	March 2020	February 2021	March 2021	March 2020	February 2021	March 2021	March 2020	February 2021	March 2021
<b>Manufacturing</b>	\$805.76	\$866.89	\$873.18	41.3	41.3	42.0	\$19.51	\$20.99	\$20.79
<b>Durable Goods</b>	\$826.98	\$945.10	\$955.46	42.0	42.4	43.0	\$19.69	\$22.29	\$22.22
<b>Non-Durable Goods</b>	\$768.72	\$733.52	\$734.88	40.1	39.5	40.4	\$19.17	\$18.57	\$18.19

## HOURS AND EARNINGS OF PRODUCTION WORKERS - ALL MANUFACTURING

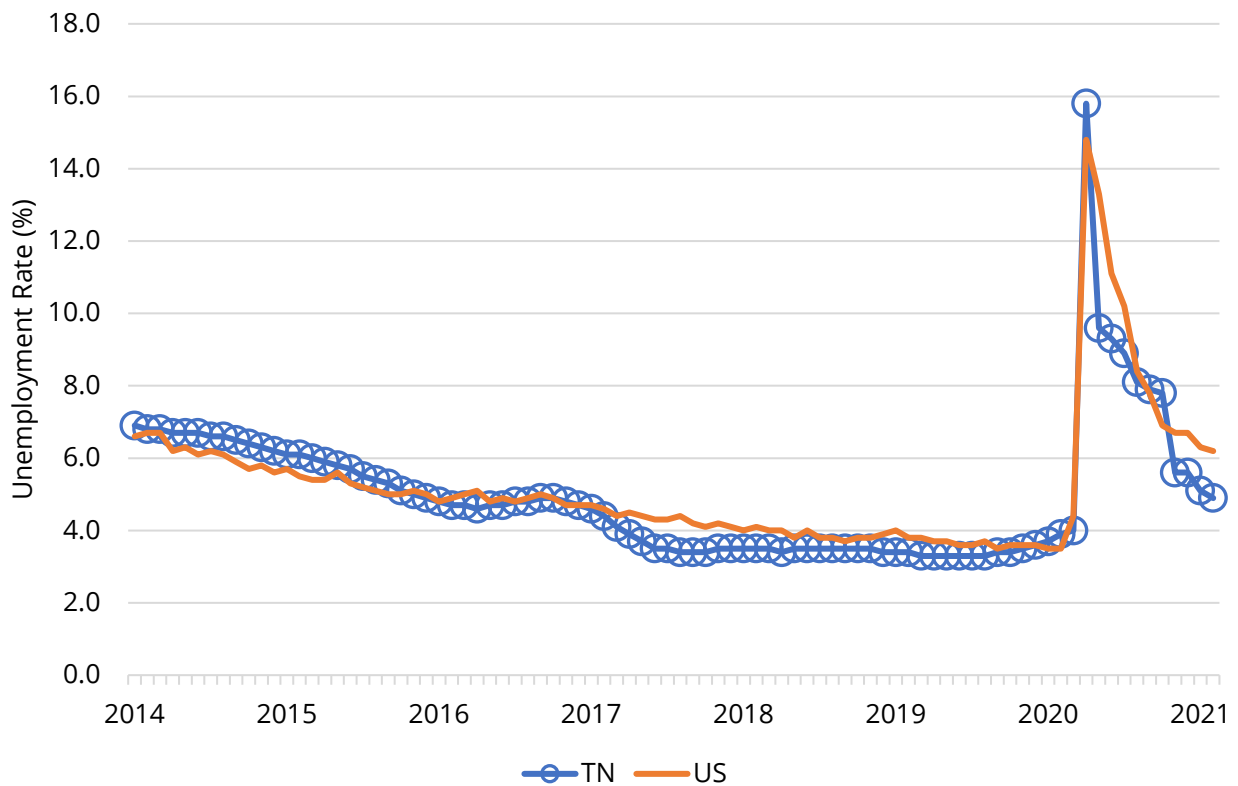
(ranked February 2021 preliminary average weekly earnings; March 2021 will be available later this month)

	Average Weekly Earning			Average Weekly Hours			Average Hourly Earning		
	February 2020	February 2021	Percent Change	February 2020	February 2021	Percent Change	February 2020	February 2021	Percent Change
<b>FLORIDA</b>	\$987.67	\$968.66	-1.9%	42.10	40.70	-3.3%	\$23.46	\$23.80	1.4%
<b>KENTUCKY</b>	\$909.51	\$920.97	1.3%	42.60	39.80	-6.6%	\$21.35	\$23.14	8.4%
<b>GEORGIA</b>	\$829.83	\$909.72	9.6%	41.70	42.00	0.7%	\$19.90	\$21.66	8.8%
<b>SOUTH CAROLINA</b>	\$874.02	\$901.20	3.1%	41.60	40.00	-3.8%	\$21.01	\$22.53	7.2%
<b>TENNESSEE</b>	\$825.24	\$868.03	5.2%	41.20	41.10	-0.2%	\$20.03	\$21.12	5.4%
<b>VIRGINIA</b>	\$762.30	\$866.26	13.6%	39.60	40.90	3.3%	\$19.25	\$21.18	10.0%
<b>ALABAMA</b>	\$847.05	\$846.24	-0.1%	42.10	41.30	-1.9%	\$20.12	\$20.49	1.8%
<b>MISSISSIPPI</b>	\$853.25	\$826.87	-3.1%	40.40	39.30	-2.7%	\$21.12	\$21.04	-0.4%
<b>NORTH CAROLINA</b>	\$755.16	\$808.35	7.0%	40.60	42.50	4.7%	\$18.60	\$19.02	2.3%
<b>ARKANSAS</b>	\$753.94	\$730.50	-3.1%	40.60	37.50	-7.6%	\$18.57	\$19.48	4.9%

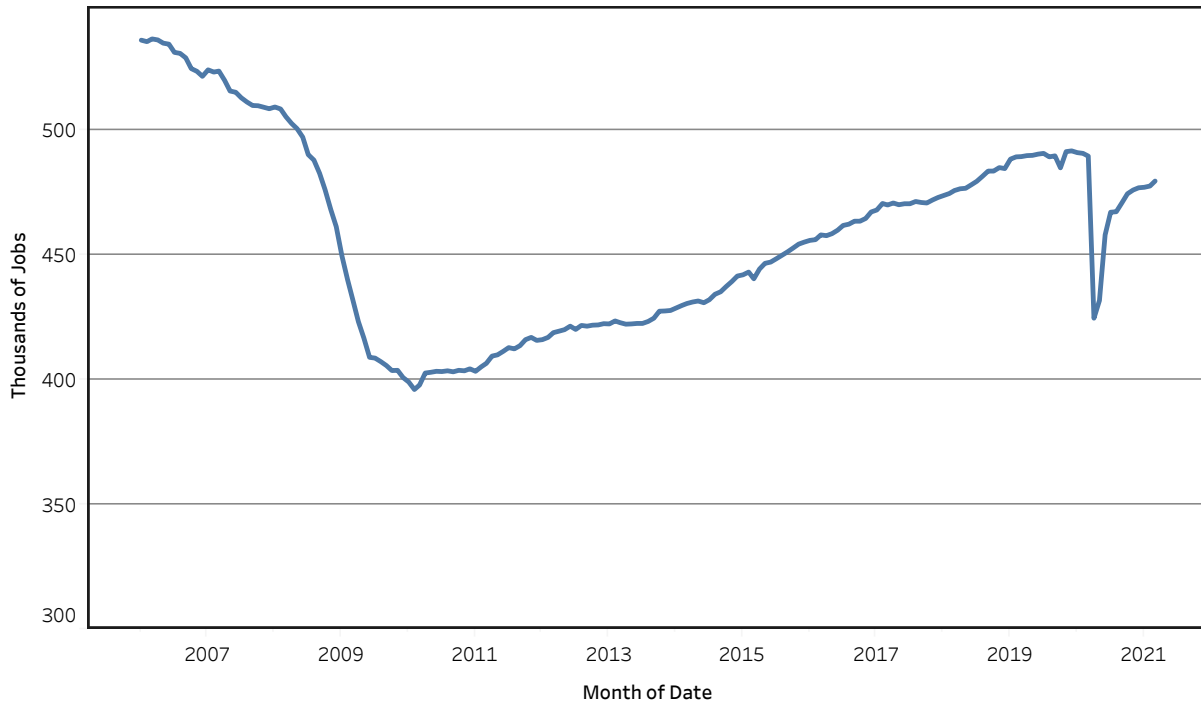
## Unemployment Rates - Tennessee Seasonally Adjusted - 2019 to 2021



## Unemployment Rates - US & Tennessee Seasonally Adjusted - January 2014 to March 2021



## Goods - Producing Jobs in Tennessee Seasonally Adjusted - Jan 2006 to Mar 2021



## Service - Providing Jobs in Tennessee Seasonally Adjusted - Jan 2006 to Mar 2021

