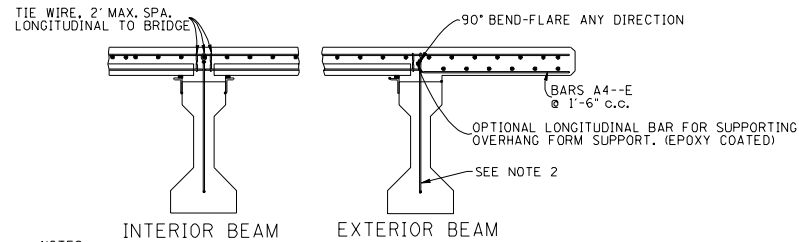
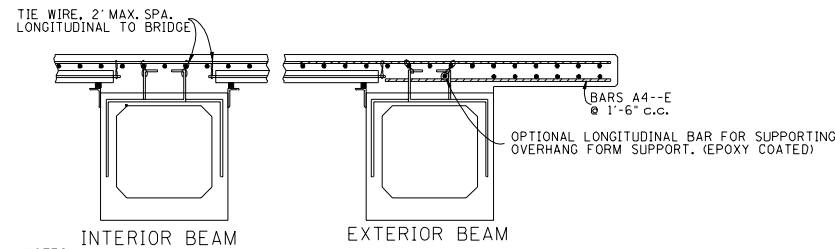


PROJECT NO.	YEAR	SHEET NO.	
	1992		
REVISIONS			
NO.	DATE	BY	BRIEF DESCRIPTION
1	10-26-92	M.A.H.	RENUMBERED DRAWING, DELETED E46--E BAR, REVISED NOTE 1 UNDER DETAIL G.
2	10-29-93	M.A.H.	TEMPORARY ERECTION DIAPHRAGM DETAIL MOVED TO STD-14-1
3	11-7-94	M.A.H.	MIN. CLEAR DIMENSION AND ADDED SUPPORT BRACKETS
4	6-10-96	M.A.H.	DELETED REFERENCE TO SP 604



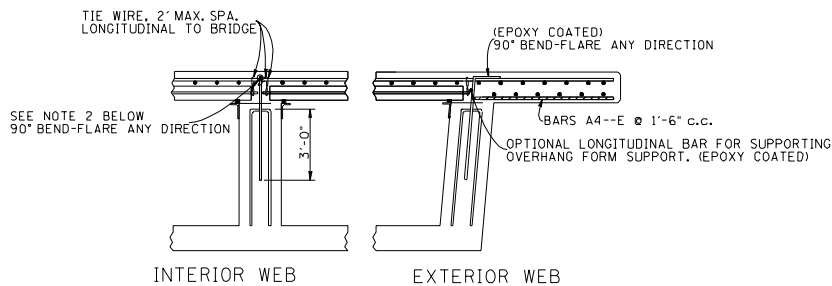
NOTES:
 1. SEE THE SPECIFICATIONS REGARDING REQUIREMENTS FOR TYING REINFORCING STEEL AND PROJECTING STRANDS OF DECK PANELS.
 2. ONE ROW OF PROJECTING REINFORCING MAY BE SUBSTITUTED BY THE CONTRACTOR TO ACCOMMODATE DECK PANELS IF EQUIVALENT AREA OF REINFORCING PER FOOT OF BEAM IS PROVIDED AND IF SHOWN ON "APPROVED" SHOP DRAWINGS FOR PRESTRESSED BEAMS AND BRIDGE DECK PANELS.

DETAIL A
 PRESTRESSED I-BEAM WITH BRIDGE DECK PANELS



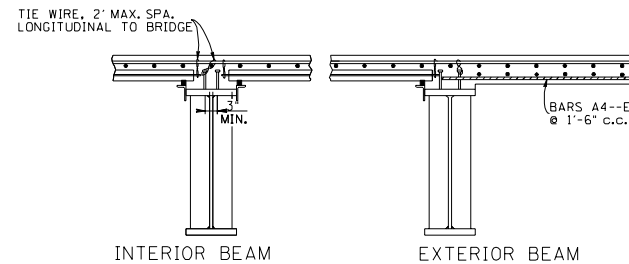
NOTES:
 1. SEE THE SPECIFICATIONS REGARDING REQUIREMENTS FOR TYING REINFORCING STEEL AND PROJECTING STRANDS OF DECK PANELS.

DETAIL B
 PRESTRESSED BOX BEAM WITH BRIDGE DECK PANELS
 (PRESTRESSED BULB-TEE BEAM SIMILAR)



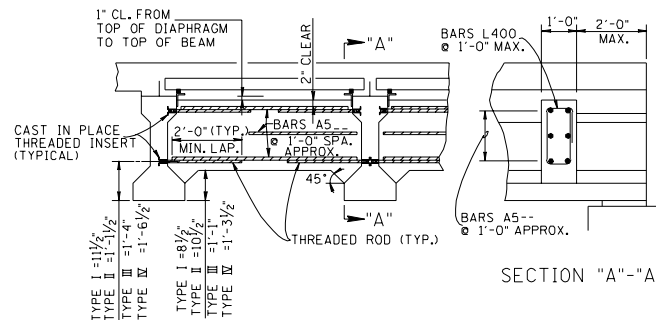
NOTES:
 1. SEE THE SPECIFICATIONS REGARDING REQUIREMENTS FOR TYING REINFORCING STEEL AND PROJECTING STRANDS OF DECK PANELS.
 2. ONE ROW OF PROJECTING REINFORCING MAY BE SUBSTITUTED BY THE CONTRACTOR TO ACCOMMODATE DECK PANELS IF EQUIVALENT AREA OF REINFORCING PER FOOT OF BEAM IS PROVIDED AND IF SHOWN ON "APPROVED" SHOP DRAWINGS FOR BRIDGE DECK PANELS.

DETAIL C
 CAST IN PLACE REINFORCED CONCRETE WITH BRIDGE DECK PANELS



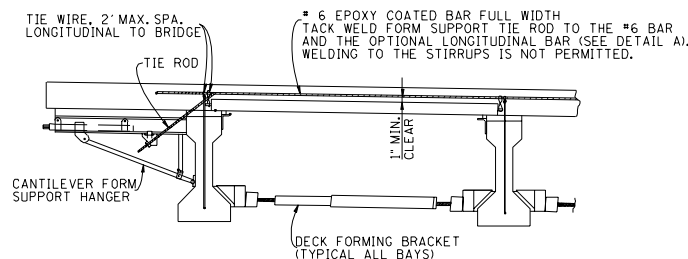
NOTES:
 1. SEE THE SPECIFICATIONS REGARDING REQUIREMENTS FOR TYING REINFORCING STEEL, PROJECTING STRANDS AND STUD SHEAR CONNECTORS.
 2. STUD SHEAR CONNECTORS MAY BE RESPACED AS SHOWN ON "APPROVED" STRUCTURAL STEEL SHOP DRAWINGS TO ACCOMMODATE BRIDGE DECK PANELS. THE NUMBER OF STUDS PER ROW MAY BE REDUCED PROVIDED THE TOTAL NUMBER OF STUDS AS SHOWN ON THE CONTRACT PLANS ARE FURNISHED.
 3. OVERHANG SUPPORTS MAY BE FIELD WELDED TO STUD SHEAR CONNECTORS AT A POINT A MINIMUM OF TWO INCHES ABOVE THE TOP OF GIRDER.

DETAIL D
 STEEL GIRDERS WITH BRIDGE DECK PANELS



NOTES:
 1. PRESTRESSED I-BEAMS ARE SHOWN, USE SIMILAR DETAILS FOR PRESTRESSED BOX BEAMS. INSERTS SHALL BE LOCATED TO PREVENT INTERFERENCE WITH PRESTRESSING STRANDS.
 2. AS AN ERECTION AID, THIS CAST IN PLACE INTERMEDIATE DIAPHRAGM MAY BE USED IN LIEU OF THE TEMPORARY ERECTION DIAPHRAGM SHOWN IN DETAIL F.

DETAIL E
 ADDITIONAL ALTERNATE CAST IN PLACE ERECTION DIAPHRAGM



NOTES:
 1. THE CONTRACTOR SHALL BE RESPONSIBLE FOR SUPPORTING THE EXTERIOR GIRDERS DURING CONSTRUCTION TO PREVENT ROTATION OR OVERTURNING. ADDITIONAL TEMPORARY ERECTION DIAPHRAGMS SHOULD BE PROVIDED AS NECESSARY FOR PRESTRESSED CONCRETE OR STEEL GIRDERS TO PREVENT ROTATION.
 2. THIS TEMPORARY ERECTION DIAPHRAGM MUST BE USED AT ENDS OF GIRDERS WHERE END DIAPHRAGMS ARE TO BE POURED CONCURRENTLY WITH THE BRIDGE DECK.
 3. SEE NOTE 2 ON DETAIL E.

DETAIL F
 TEMPORARY ERECTION DIAPHRAGM

MINOR REVISION - FHWA APPROVAL NOT REQUIRED

STATE OF TENNESSEE
 DEPARTMENT OF TRANSPORTATION
 STANDARD
 PRECAST PRESTRESSED
 BRIDGE DECK PANELS
 CONSTRUCTION DETAILS
 1992