

1 @ 18 x 15 REINFORCED CONCRETE BOX BRIDGE

Table with columns for Maximum Fill Height ft, Dimensions (ST, SB, WT, BW), Bars TST, TSB, BST, BSB, EWE, EWI, LNT, LND, WS, Concrete CY/LF, and Reinf. Steel LB/LF. Rows include 'No Fill' and heights from 3 to 60 feet.

CONST. NO., PROJECT NO., YEAR (2010), SHEET NO., and REVISIONS table with columns for NO., DATE, BY, and BRIEF DESCRIPTION.

1 @ 18 x 16 REINFORCED CONCRETE BOX BRIDGE

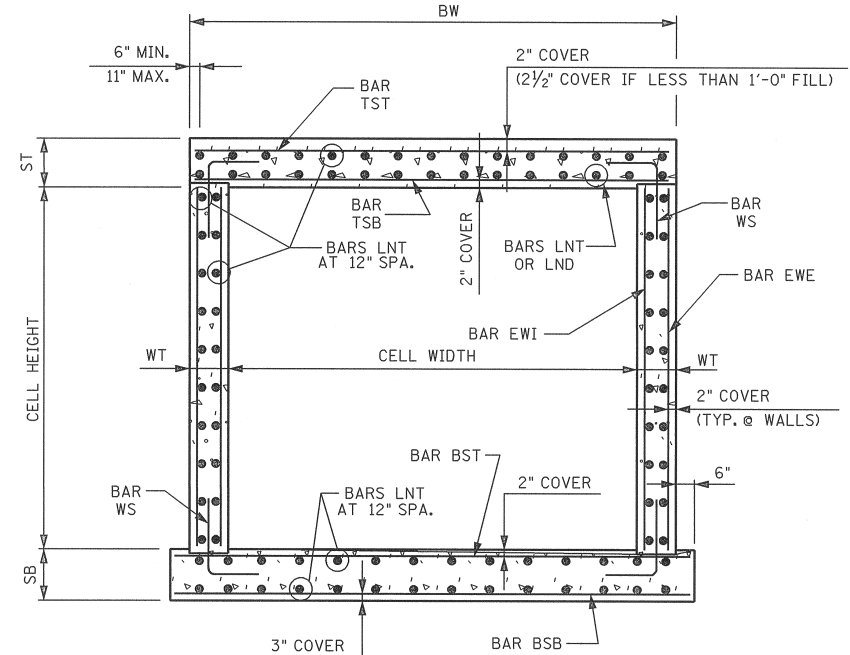
Table with columns for Maximum Fill Height ft, Dimensions (ST, SB, WT, BW), Bars TST, TSB, BST, BSB, EWE, EWI, LNT, LND, WS, Concrete CY/LF, and Reinf. Steel LB/LF. Rows include 'No Fill' and heights from 3 to 60 feet.

1 @ 18 x 17 REINFORCED CONCRETE BOX BRIDGE

Table with columns for Maximum Fill Height ft, Dimensions (ST, SB, WT, BW), Bars TST, TSB, BST, BSB, EWE, EWI, LNT, LND, WS, Concrete CY/LF, and Reinf. Steel LB/LF. Rows include 'No Fill' and heights from 3 to 60 feet.

1 @ 18 x 18 REINFORCED CONCRETE BOX BRIDGE

Table with columns for Maximum Fill Height ft, Dimensions (ST, SB, WT, BW), Bars TST, TSB, BST, BSB, EWE, EWI, LNT, LND, WS, Concrete CY/LF, and Reinf. Steel LB/LF. Rows include 'No Fill' and heights from 3 to 60 feet.



TYPICAL SECTION

Note: Maximum fill height shown in the table is measured from the bottom of the top slab. To obtain the total fill height from the flow line, add the height of the box. Note: When height of fill above the top slab is less than 1 foot, the top mat of reinforcing in the top slab shall be constructed with 2-1/2 inches of concrete cover.

The following bar information applies to all fill cases in the tables above: Bars LNT Size = 4 Spacing = 12 in. Bars LND Size = 5 Spacing = 6 in. Bars WS Size = 8 Length = 5.00 ft. Spacing = 12 in.

NOTE: FOR DESCRIPTIONS OF BOX DIMENSIONS AND REINFORCING BAR DESIGNATIONS SEE STANDARD DRAWING NO. STD-17-5.

STATE OF TENNESSEE DEPARTMENT OF TRANSPORTATION STANDARD REINFORCED CONCRETE BOX BRIDGE INTERIOR SECTION SPANS: 1 BARREL AT 18'-0" CLEAR HEIGHTS 15'-0" THRU 18'-0" 0' THRU 60' FILL 2010

DESIGNED BY: RLL/ALP DATE: 12-09 DRAWN BY: KEVIN MARTINKO DATE: 1-10 SUPERVISED BY: EPW/RLC DATE: 12-09 CHECKED BY: RLL/ALP DATE: 2-10

CORRECT Edward P. Wasserman ENGINEER OF STRUCTURES