

ENDPOST NO. 3A AND 3B
(GOOD FOR SKEWS 30° THRU 49°)

BARS	SIZE	# REQ'D				BENDING DIMENSIONS				LENGTH
		3A	3B	a	b	c	d			
A400E	4	4		⊙					32'-6"	
A401E	4	4		⊙					25'-0"	
A510E	5	10	10						4'-8"	
A511E	5	4							9'-9"	
A512E	5	4							6'-6"	
A513E	5	8	8						12'-0"	
C500E	5	10	4	4'-10 1/2"	9"				5'-7"	
C700E	7	14	14	4'-5 1/2"	9"				5'-2"	
H500E	5	26	18	9"	2'-0"				4'-9"	
H501E	5	6	6	9"	3'-7"				7'-11"	
H505E	5	9	5	7 1/2"	10"				2'-4"	
GB500E	5	9	6	9"	2'-7 1/2"	1'-6"	⊙		4'-11"	
YC500E	5	9	6	9"	1'-3"	⊙			4'-0"	
GA400E	4	4	4	6"	5"	2'-5"	2'-0"		5'-0"	

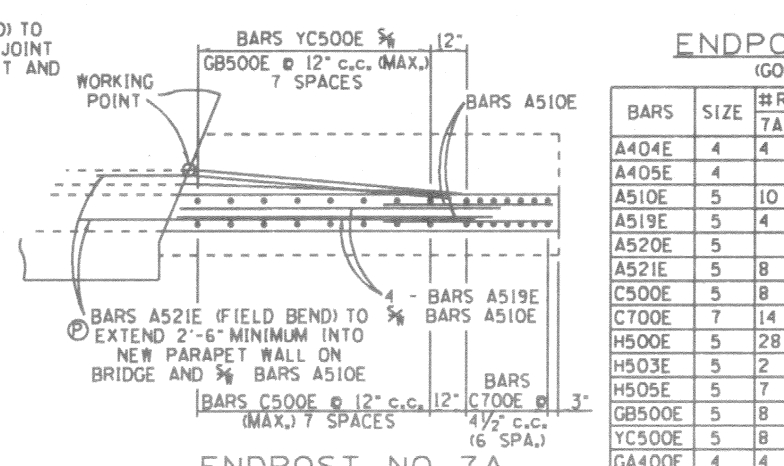
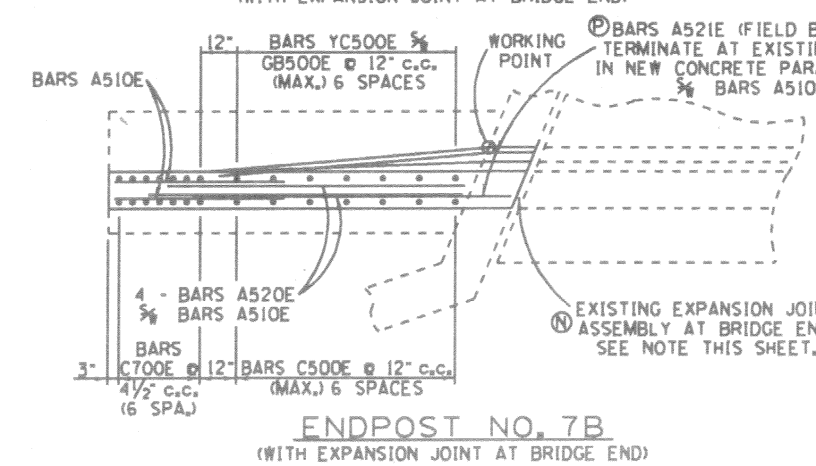
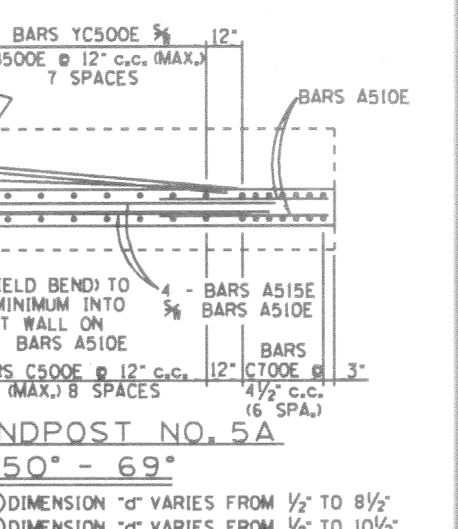
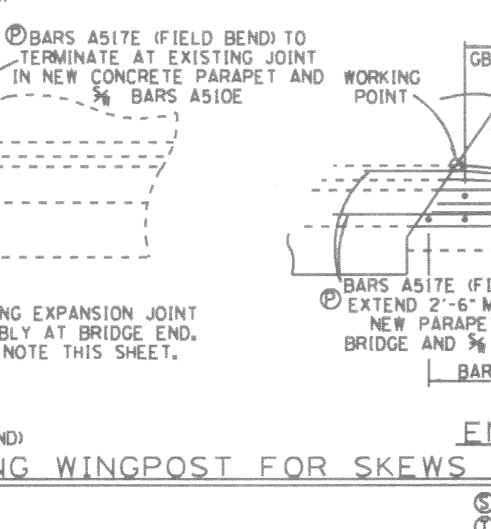
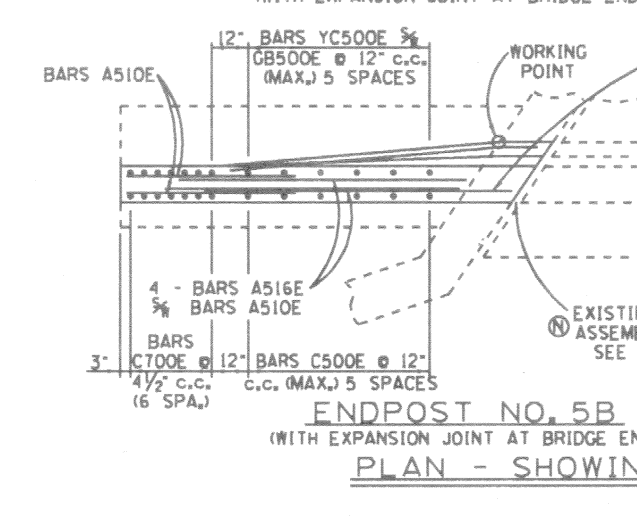
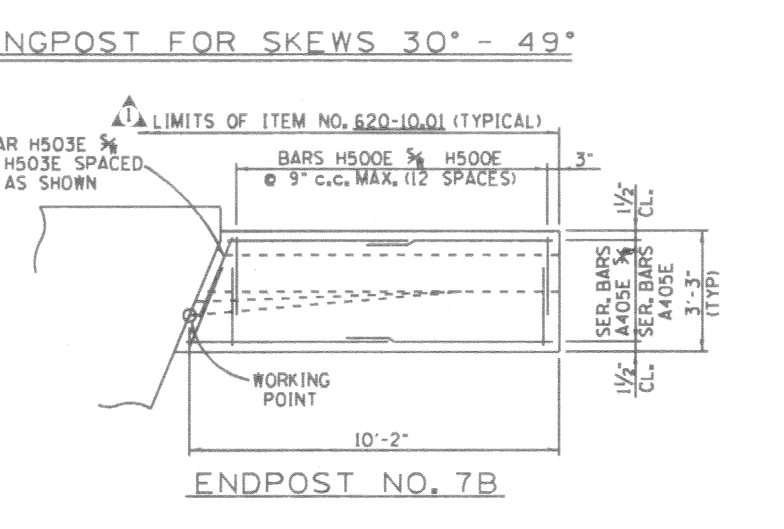
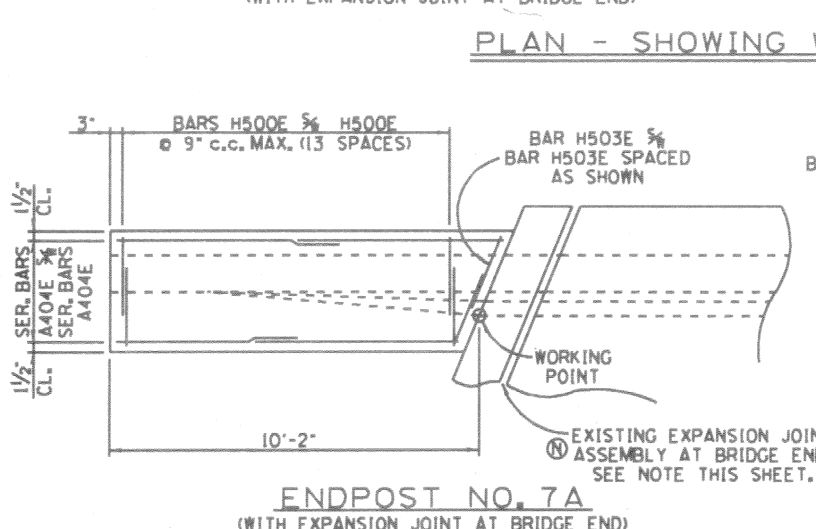
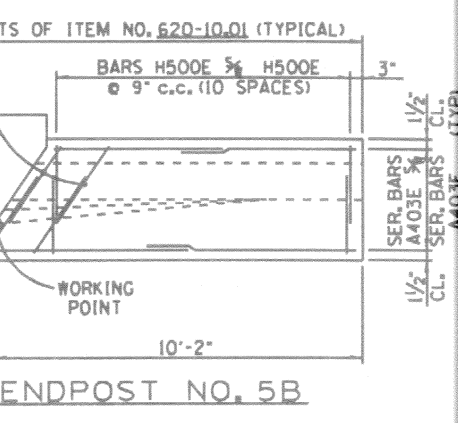
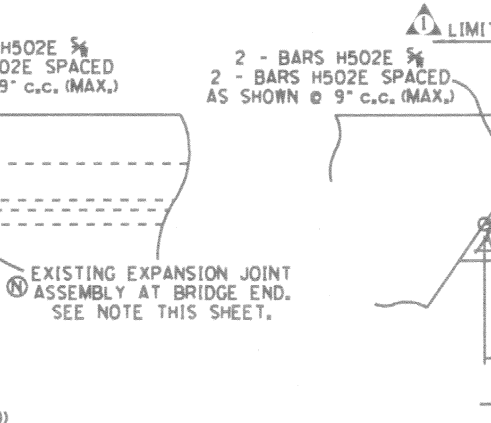
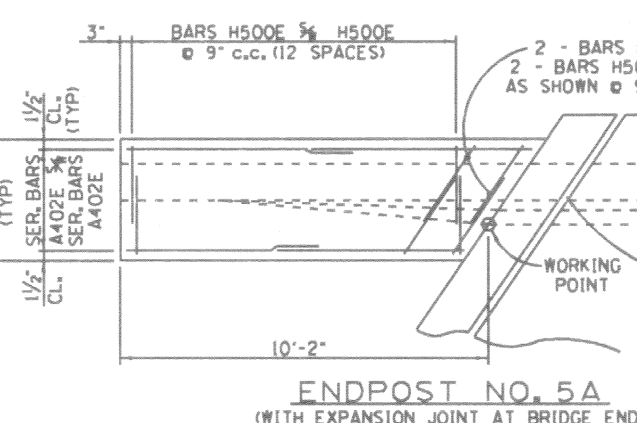
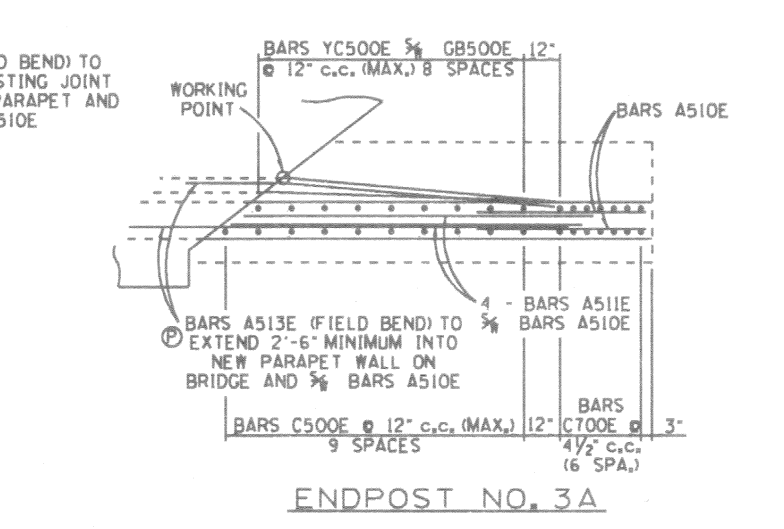
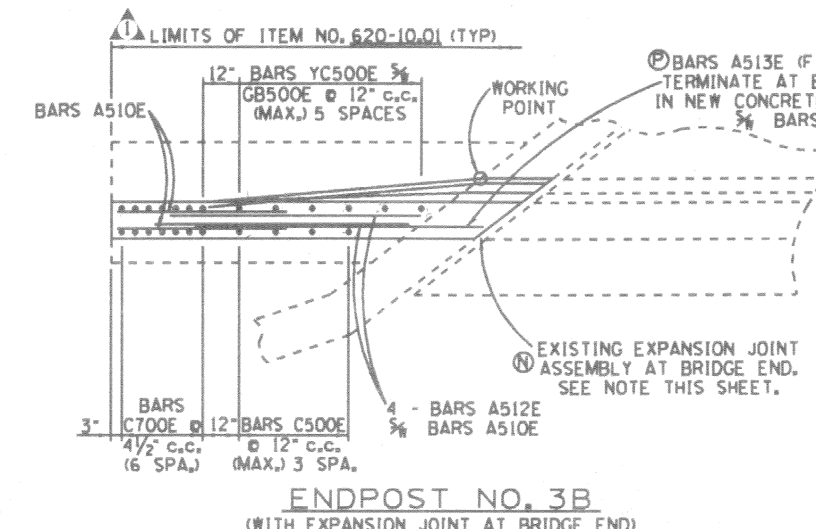
NOTE: WHEN BRIDGE HAS EXISTING BITUMINOUS EXPANSION JOINT AT BRIDGE ENDS, THE NEW ENDPOST AND NEW PARAPET RAIL SHALL BE POURED CONTINUOUS WITH NO PROVISIONS FOR EXPANSION IN THE NEW CONCRETE PARAPET WALLS. WHEN BRIDGE HAS AN EXISTING STEEL PLATE EXPANSION JOINT AT BRIDGE ENDS, PROVISIONS SHALL BE MADE WHEN POURING THE NEW CONCRETE PARAPET WALL FOR THIS EXPANSION. EXPANSION OPENING SHALL MATCH THE EXISTING JOINT OPENING AT END OF BRIDGE.

NOTE: BARS A5--E SHALL EXTEND 2'-6" MINIMUM INTO THE NEW CONCRETE PARAPET AT BRIDGE ENDS WHEN THERE IS NO EXISTING EXPANSION JOINT ASSEMBLY PRESENT. WHEN THE BRIDGE HAS AN EXISTING EXPANSION JOINT ASSEMBLY AT BRIDGE ENDS, THESE BARS SHALL BE FIELD CUT AND TERMINATE AT THE EXISTING JOINT. WHEN THE EXISTING BRIDGE HAS A BITUMINOUS JOINT AT BRIDGE ENDS, BARS A5--E ARE TO EXTEND THRU THIS EXISTING BITUMINOUS JOINT, AND THE NEW CONCRETE PARAPET SHALL BE POURED CONTINUOUS.

NOTE: SEE BAR BENDS ON DWG. NO. SBR-2-125.

PROJECT NO.	YEAR	SHEET NO.
	1988	

REVISIONS		
NO.	DATE	BRIEF DESCRIPTION
1	5-26-89	WMM REVISED ENDPOST AND ITEM NUMBER
2	11-16-92	WMM REVISED DRAWING NUMBERS
3	2-24-95	TO REVISED SIGNATURES
4	1-4-96	TO REVISED BR DRAWING NO. TO SBR DRAWING NO.



ENDPOST NO. 7A AND 7B
(GOOD FOR SKEWS 70° THRU 90°)

BARS	SIZE	# REQ'D		BENDING DIMENSIONS				LENGTH
		7A	7B	a	b	c	d	
A404E	4	4		⊙				29'-7"
A405E	4	4		⊙				27'-11"
A510E	5	10	10					4'-8"
A519E	5	4						7'-9"
A520E	5	4						7'-0"
A521E	5	8	8					10'-3"
C500E	5	8	7	4'-10 1/2"	9"			5'-7"
C700E	7	14	14	4'-5 1/2"	9"			5'-2"
H500E	5	28	26	9"	2'-0"			4'-9"
H503E	5	2	2	9"	2'-3"			5'-3"
H505E	5	7	7	7 1/2"	10"			2'-4"
GB500E	5	8	7	9"	2'-7 1/2"	1'-6"	⊙	4'-11"
YC500E	5	8	7	9"	1'-3"	⊙		4'-0"
GA400E	4	4	4	6"	5"	2'-5"	2'-0"	5'-0"

ENDPOST NO. 5A AND 5B
(GOOD FOR SKEWS 50° THRU 69°)

BARS	SIZE	# REQ'D		BENDING DIMENSIONS				LENGTH
		5A	5B	a	b	c	d	
A402E	4	4		⊙				30'-10"
A403E	4	4		⊙				27'-1"
A510E	5	10	10					4'-8"
A515E	5	4						8'-6"
A516E	5	4						6'-9"
A517E	5	8	8					11'-0"
C500E	5	9	6	4'-10 1/2"	9"			5'-7"
C700E	7	14	14	4'-5 1/2"	9"			5'-2"
H500E	5	26	22	9"	2'-0"			4'-9"
H502E	5	4	4	9"	2'-6"			5'-9"
H505E	5	8	6	7 1/2"	10"			2'-4"
GB500E	5	8	6	9"	2'-7 1/2"	1'-6"	⊙	4'-11"
YC500E	5	8	6	9"	1'-3"	⊙		4'-0"
GA400E	4	4	4	6"	5"	2'-5"	2'-0"	5'-0"

⊙ DIMENSION 'd' VARIES FROM 1/2" TO 8 1/2"
 ⊙ DIMENSION 'd' VARIES FROM 1/2" TO 10 1/2"
 ⊙ SERIES BARS - VARIES FROM 6'-2" TO 5'-8" IN INCREMENTS OF 1/2" (5 BARS)
 ⊙ SERIES BARS - VARIES FROM 5'-10" TO 5'-4" IN INCREMENTS OF 1/2" (5 BARS)
 ⊙ SERIES BARS - VARIES FROM 6'-10" TO 5'-6" IN INCREMENTS OF 4" (5 BARS)
 ⊙ SERIES BARS - VARIES FROM 6'-1" TO 4'-9" IN INCREMENTS OF 4" (5 BARS)

STATE OF TENNESSEE
 DEPARTMENT OF TRANSPORTATION
 BUREAU OF HIGHWAYS

DETAILS SHOWING REPLACEMENT OF EXISTING BRIDGERAIL SYSTEM WITH NEW JERSEY SHAPE CONCRETE PARAPET AND NEW 10'-2" ENDPOST 1988

DESIGNED BY: KEITH DOUGLAS
 DRAWN BY: KEITH DOUGLAS
 SUPERVISED BY: GENTRY & MEINTURFF
 CHECKED BY: MEINTURFF

DATE: 9-92
 DATE: 9-92
 DATE: 9-92

PLAN - SHOWING WINGPOST FOR SKEWS 70° - 90°

NOTE: SEE BAR BENDS ON DWG. NO. SBR-2-125.

MINOR REVISION - FHWA
 APPROVAL NOT REQUIRED

1 2 3
 4 SBR-2-12