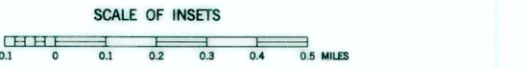
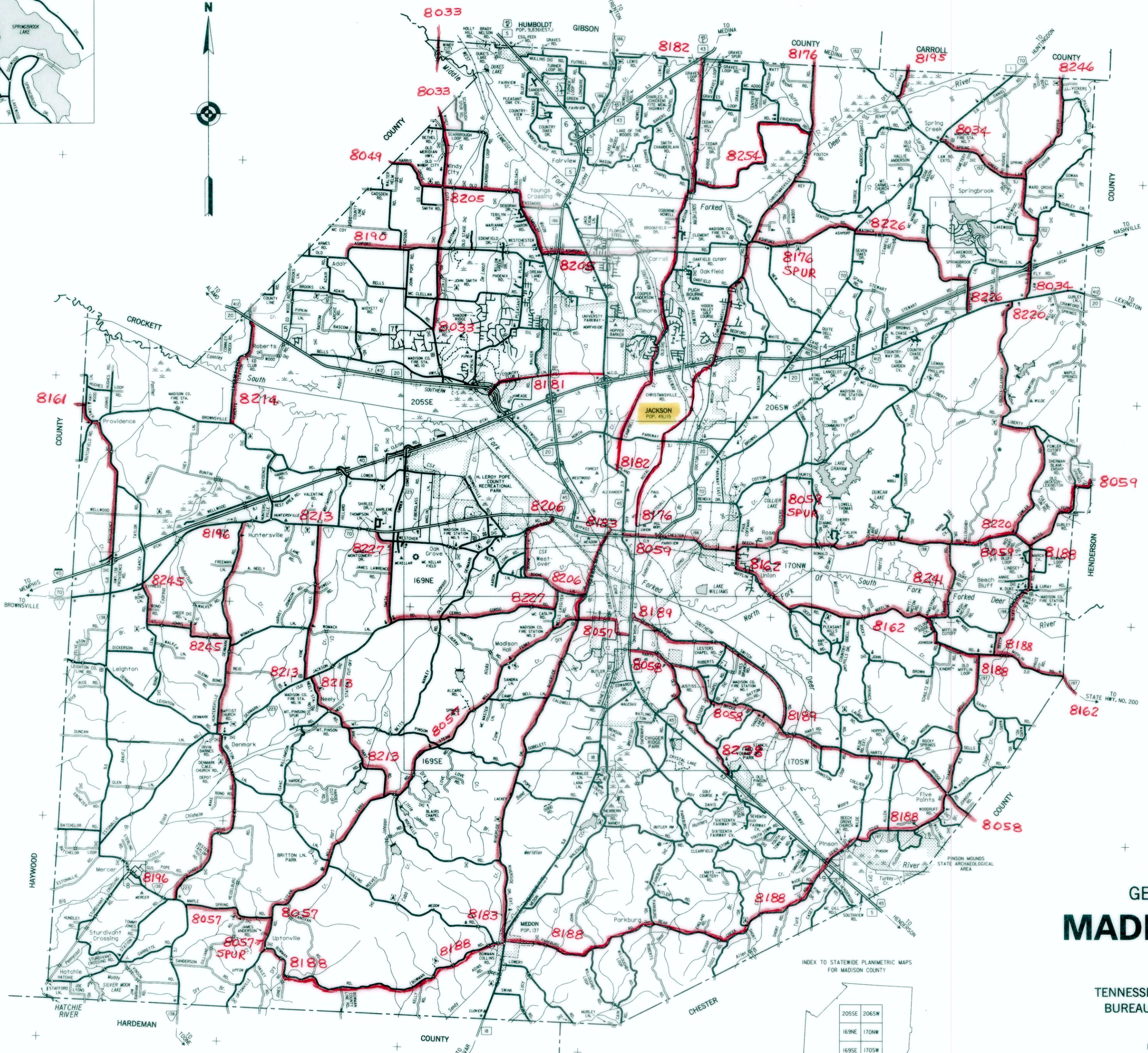


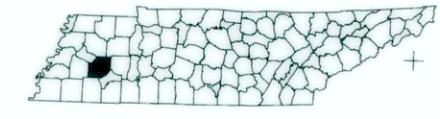
MAP RECORD
FIELD DATA OBTAINED IN 1989
FIELD EXAMINATION MADE IN 1993

REVISIONS	DATE



- ### LEGEND
- SCHOOL
 - CHURCH WITH CEMETERY
 - CEMETERY
 - HOSPITAL
 - POST OFFICE
 - HIGHWAY PATROL STATION
 - CITY HALL OR COMMUNITY CENTER
 - MONUMENT
 - AIRPORT - COMPLETE FACILITIES
 - AIRPORT - LIMITED FACILITIES
 - LANDING AREA OR STRIP
 - POWER PLANT
 - WEIGHT STATION
 - HIGHWAY GARAGE (S-STATE, C-COUNTY)
 - TRIANGULATION STATION
 - OBSERVATION OR LOOKOUT TOWER
 - COUNTY SEAT
 - OTHER CITIES AND VILLAGES
 - RADIO OR TELEVISION STATION
 - POINT OF INTEREST
 - DOT TO INDICATE LOCATION OF ANY CULTURAL FEATURE OUT OF PLACE
 - INTERSTATE HIGHWAY MARKER
 - U.S. NUMBERED HIGHWAY MARKER
 - STATE HIGHWAY MARKER
 - FEDERAL AID PRIMARY SYSTEM
 - STATE HIGHWAY MARKER
 - FEDERAL AID SECONDARY SYSTEM
 - PROMINENT PEAK WITH ELEVATION
 - LAKE WITH DAM
 - RESERVOIR, POND OR LAKE
 - LEVEE OR DYKE
 - DRAINAGE CANAL
 - NARROW STREAM
 - WIDE STREAM
 - DAM WITH LOCK
 - HEAD OF NAVIGATION
 - NAVIGABLE STREAM
 - GRADE CROSSING
 - UNDERPASS-ROAD BELOW
 - OVERHEAD-ROAD ABOVE
 - RAILROAD TUNNEL
 - GRADE SEPARATION
 - FORD
 - LOW WATER BRIDGE
 - FREE FERRY OR TOLL FERRY
 - HIGHWAY BRIDGE-OVER 20 FEET
 - HIGHWAY BRIDGE-LONG RIVER CROSSING (C-CONCRETE, S-STEEL, W-WOOD)
 - PRIMITIVE OR UNIMPROVED ROAD
 - GRADED AND DRAINED SOIL, GRAVEL OR STONE SURFACED ROAD
 - PAVED ROAD
 - PAVED HIGHWAY OR ROAD
 - DIVIDED ROADWAY
 - DISTANCE IN MILES BETWEEN DESIGNATED POINTS
 - FULL CONTROL OF ACCESS
 - NATIONAL PARK SERVICE HIGHWAY
 - HIGHWAY INTERCHANGE
 - COUNTY LINE
 - STATE LINE
 - MONUMENTED BOUNDARY MARKER
 - INCORPORATED CITY BOUNDARY
 - RESERVATION BOUNDARY
 - PAVED OR GRAVEL PUBLIC ROAD
 - MAINTENANCE NOT CITY OR COUNTY RESPONSIBILITY

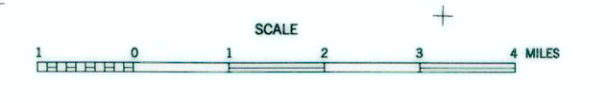
FEDERAL AID SECONDARY ROUTES SHOWN IN RED ARE BASED ON SYSTEM ROUTE INFORMATION CIRCA 1976, THE YEAR THE PROGRAM ENDED.



GENERAL HIGHWAY MAP MADISON COUNTY TENNESSEE

PREPARED BY THE
TENNESSEE DEPARTMENT OF TRANSPORTATION
BUREAU OF PLANNING AND DEVELOPMENT
PLANNING DIVISION
IN COOPERATION WITH THE
U.S. DEPARTMENT OF TRANSPORTATION
FEDERAL HIGHWAY ADMINISTRATION

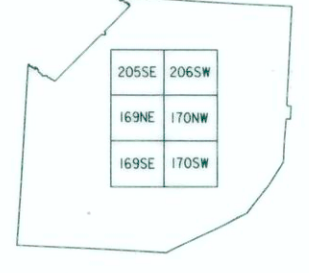
1993



POPULATION OF MADISON COUNTY
77,982 (1990 CENSUS)

LAMBERT CONFORMAL CONIC PROJECTION
20,000 FOOT GRID TICS BASED ON THE
TENNESSEE COORDINATE SYSTEM
(1987 NORTH AMERICAN DATUM)

INDEX TO STATEWIDE PLANIMETRIC MAPS
FOR MADISON COUNTY



1 COUNTY MAP SHEET WITH
6 STATEWIDE PLANIMETRIC MAP SHEETS
AND 1 CITY MAP SHEET
MEDON