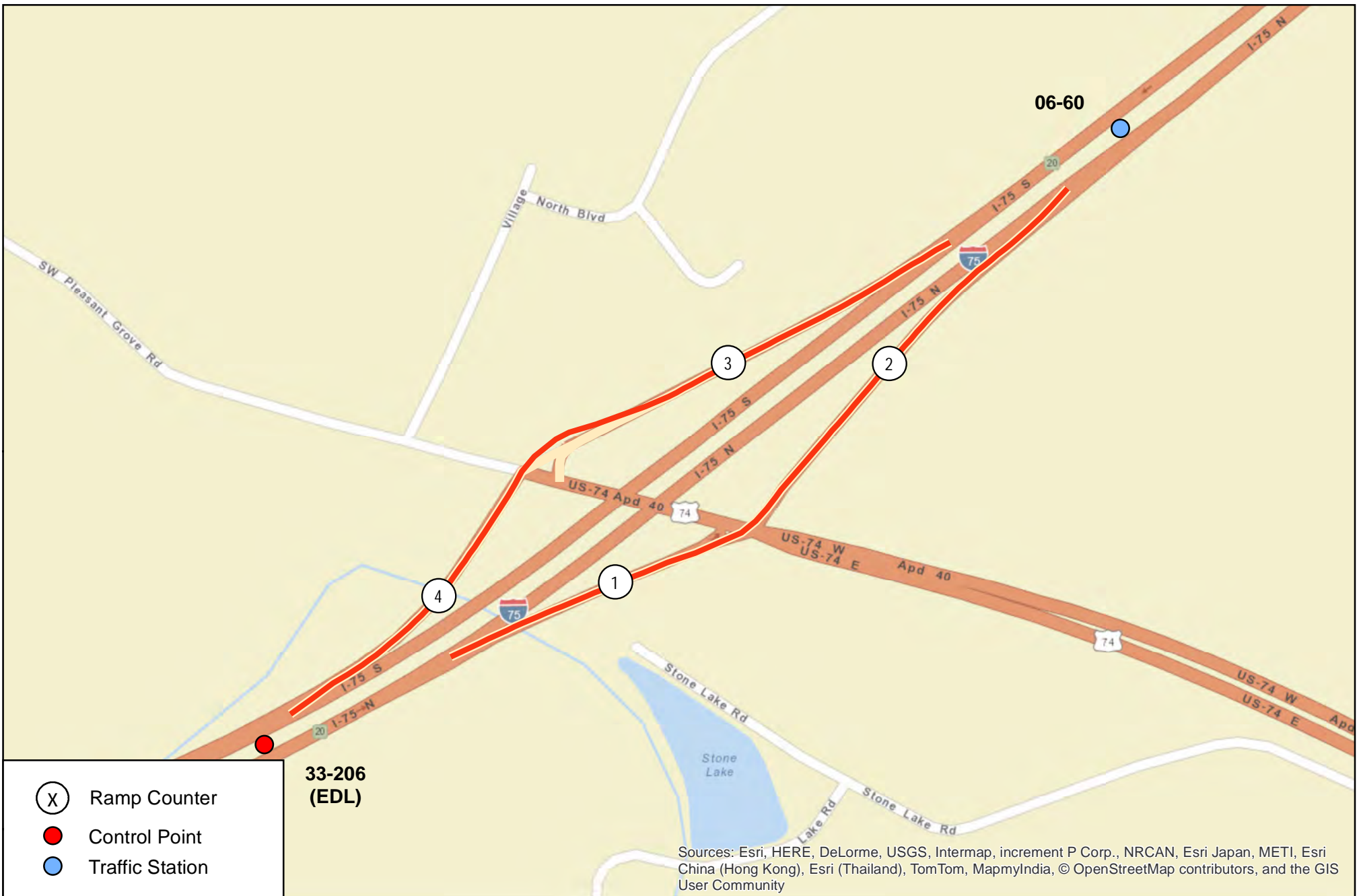


Bradley County





Sources: Esri, HERE, DeLorme, USGS, Intermap, increment P Corp., NRCAN, Esri Japan, METI, Esri China (Hong Kong), Esri (Thailand), TomTom, MapmyIndia, © OpenStreetMap contributors, and the GIS User Community

**33-206
(EDL)**

TDOT
Prepared by
Tennessee Dept. of Transportation
Long Range Planning Division
Date: 1/27/2016

**Bradley County
Interstate 75
Exit No: 20**



**Traffic Counter Location
Ramp Interchange Diagram**

06100750010020





Sources: Esri, DeLorme, HERE, USGS, Intermap, increment P Corp., NRCAN, Esri Japan, METI, Esri China (Hong Kong), Esri (Thailand), TomTom



Prepared by
Tennessee Dept. of Transportation
Long Range Planning Division

Date: 6/6/2014

Bradley County Interstate 75 Exit No: 25






Traffic Counter Location Ramp Interchange Diagram

06100750010025





Sources: Esri, DeLorme, HERE, USGS, Intermap, increment P Corp., NRCAN, Esri Japan, METI, Esri China (Hong Kong), Esri (Thailand), TomTom

-  Ramp Counter
-  Control Point
-  Traffic Station



Prepared by
Tennessee Dept. of Transportation
Long Range Planning Division

Date: 7/15/2014

Bradley County

Interstate 75

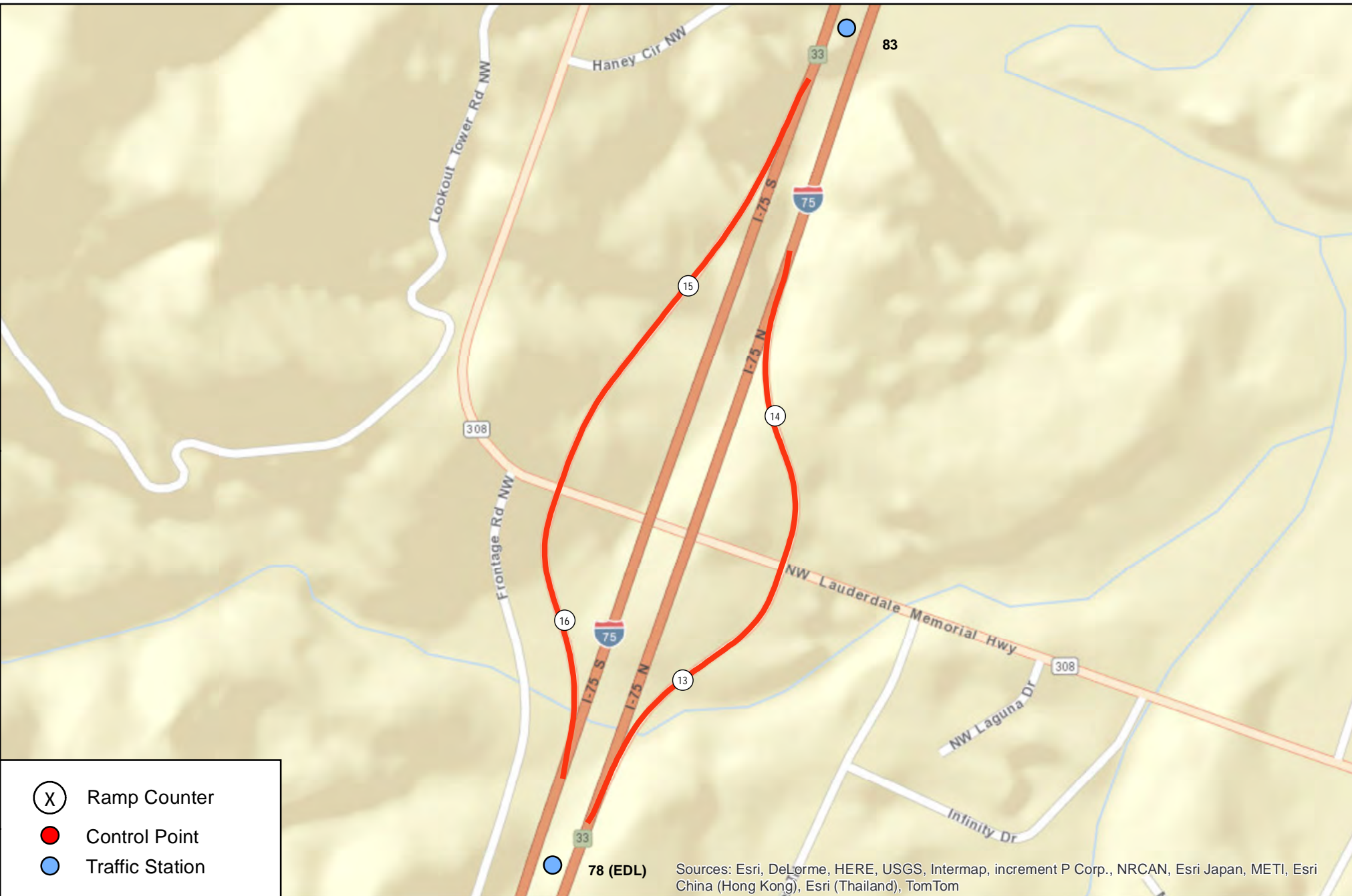
Exit No: 27



Traffic Counter Location Ramp Interchange Diagram

06100750010027





Sources: Esri, DeLorme, HERE, USGS, Intermap, increment P Corp., NRCAN, Esri Japan, METI, Esri China (Hong Kong), Esri (Thailand), TomTom

- (X) Ramp Counter
- Control Point
- Traffic Station



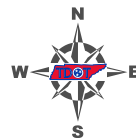
Prepared by
Tennessee Dept. of Transportation
Long Range Planning Division

Date: 7/15/2014

Bradley County

Interstate 75

Exit No: 33



Traffic Counter Location Ramp Interchange Diagram

06I00750010033



Bradley Ramp Counter Stations

Counter #	AADT
1	8,450
2	3,450
3	3,360
4	8,380
5	4,930
6	4,150
7	3,470
8	4,610
9	4,400
10	2,760
11	3,280
12	4,270
13	3,680
14	2,440
15	2,450
16	4,520