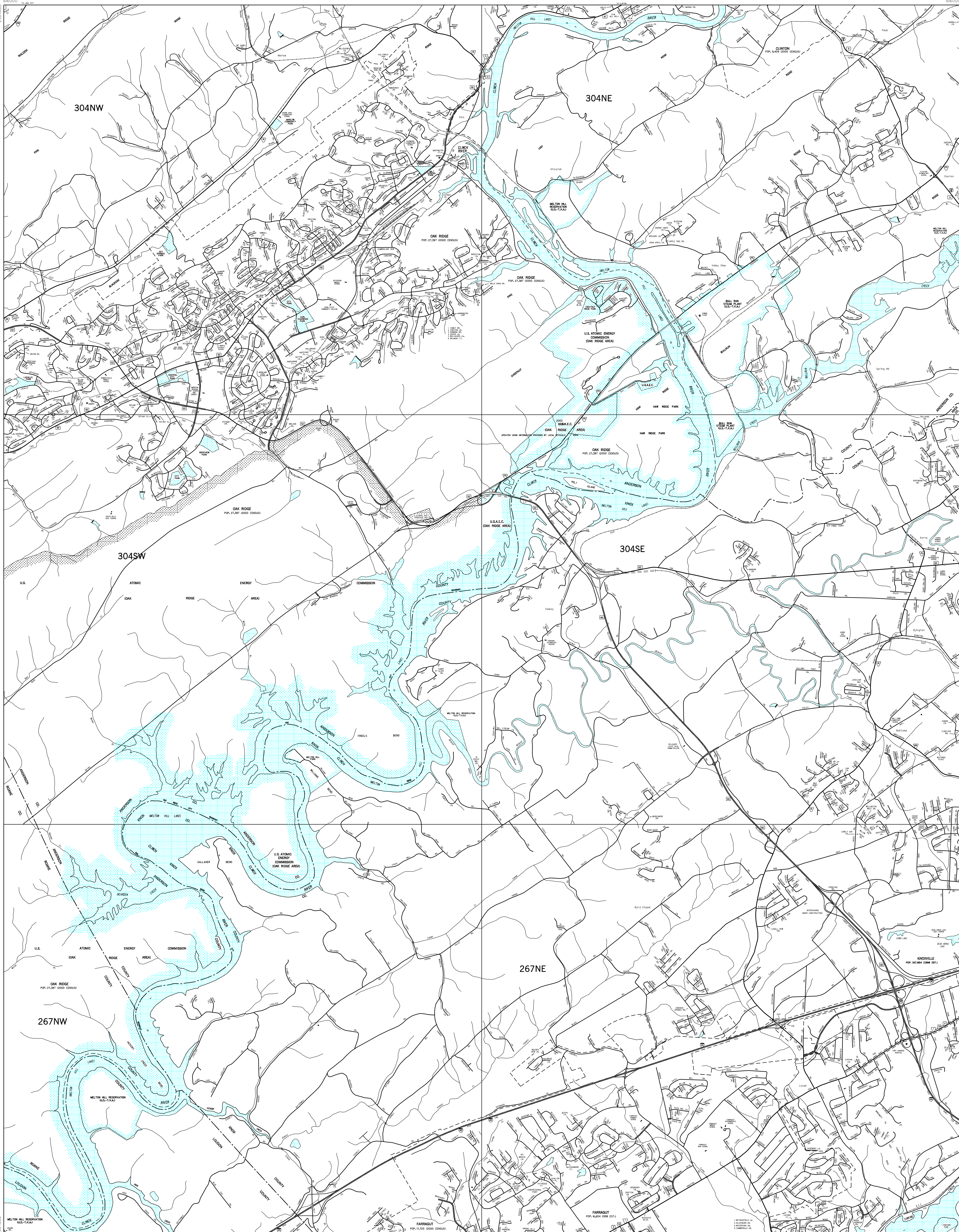
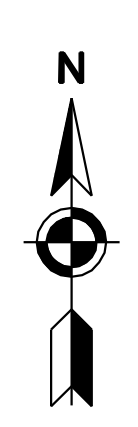


MAP RECORD	
FIELD DATA OBTAINED IN 2002	
FIELD EXAMINATION MADE IN	
REVISIONS	DATE



LEGEND

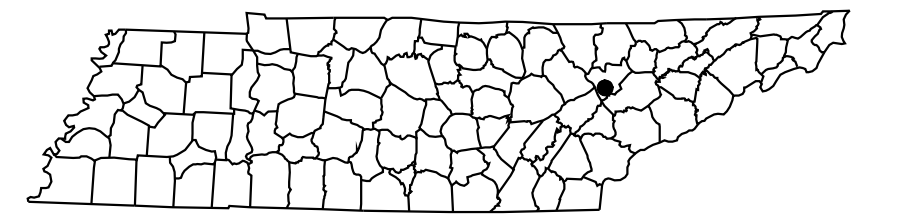
- SCHOOL
- HOSPITAL
- POST OFFICE
- COURTHOUSE
- CITY HALL OR COMMUNITY CENTER
- MONUMENT
- AIRPORT - COMPLETE FACILITIES
- AIRPORT - LIMITED FACILITIES
- LANDING AREA OR STRIP
- OBSERVATION OR LOOKOUT TOWER
- ARMORY
- HIGHWAY GARAGE (S-STATE, C-COUNTY)
- POINTS OF INTEREST
- INTERSTATE HIGHWAY
- U.S. NUMBERED HIGHWAY
- STATE HIGHWAY
- STATE HIGHWAY
- LAKE WITH DAM
- RESERVOIR, POND OR LAKE
- LEVEE OR DYKE
- NARROW STREAM
- WIDE STREAM
- DAM WITH LOCK
- HEAD OF NAVIGATION
- NAVIGABLE STREAM
- GRADE CROSSING
- UNDERPASS-ROAD BELOW
- OVERHEAD-ROAD ABOVE
- RAILROAD TUNNEL
- GRADE SEPARATION
- FORD
- LOW WATER BRIDGE
- FREE FERRY OR TOLL FERRY
- HIGHWAY BRIDGE-OVER 20 FEET
- HIGHWAY BRIDGE-LONG RIVER CROSSING
- PRIMITIVE OR UNIMPROVED ROAD
- GRADED AND DRAINED, SOIL, GRAVEL OR STONE SURFACED ROAD
- PAVED ROAD
- GRADED AND DRAINED, SOIL, GRAVEL OR STONE SURFACED HIGHWAY
- PAVED HIGHWAY
- DIVIDED ROADWAY
- DISTANCE IN MILES BETWEEN DESIGNATED POINTS
- FULL CONTROL OF ACCESS
- NATIONAL PARK SERVICE HIGHWAY
- COUNTY LINE
- STATE LINE
- INCORPORATED CITY BOUNDARY
- RESERVATION BOUNDARY



INDEX TO ADJOINING STATEWIDE PLANIMETRIC MAPS

303NE	304NW	304NE
303SW	303SE	304SW
266NW	266NE	267NW
267NE	267NE	267NE

INDIVIDUAL MAP SHEETS AVAILABLE AT THE SCALE OF 1 INCH EQUALS 1,000 FEET

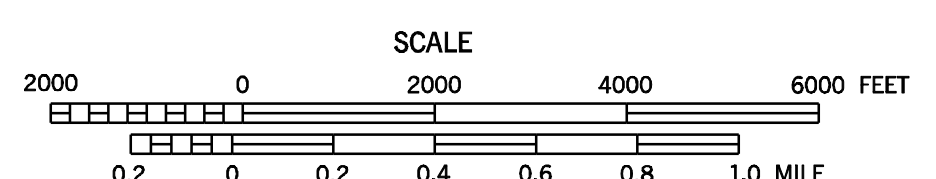


ADVANCED PRINT SUBJECT TO CONNECTION

ADVANCED PRINT SUBJECT TO CONNECTION

CITY AND VICINITY MAP
OAK RIDGE
EAST
TENNESSEE

PREPARED BY THE
TENNESSEE DEPARTMENT OF TRANSPORTATION
LONG RANGE PLANNING DIVISION
IN COOPERATION WITH THE
U.S. DEPARTMENT OF TRANSPORTATION
FEDERAL HIGHWAY ADMINISTRATION



2004

AUTHORIZATION NO. 40190140150