



CC Traffic Stations

- 006 037 069 094 133 211
- 007 051 070 095 134 212
- 008 052 072 098 135 214
- 009 053 073 099 137 220
- 010 054 074 101 138 222
- 011 055 076 102 163 223
- 014 057 077 103 166 236
- 016 058 078 109 167 238
- 019 059 080 110 185
- 020 060 082 116 187
- 021 061 083 120 197
- 022 062 084 122 199
- 024 063 085 123 201
- 026 064 092 127 204
- 036 065 093 129 210

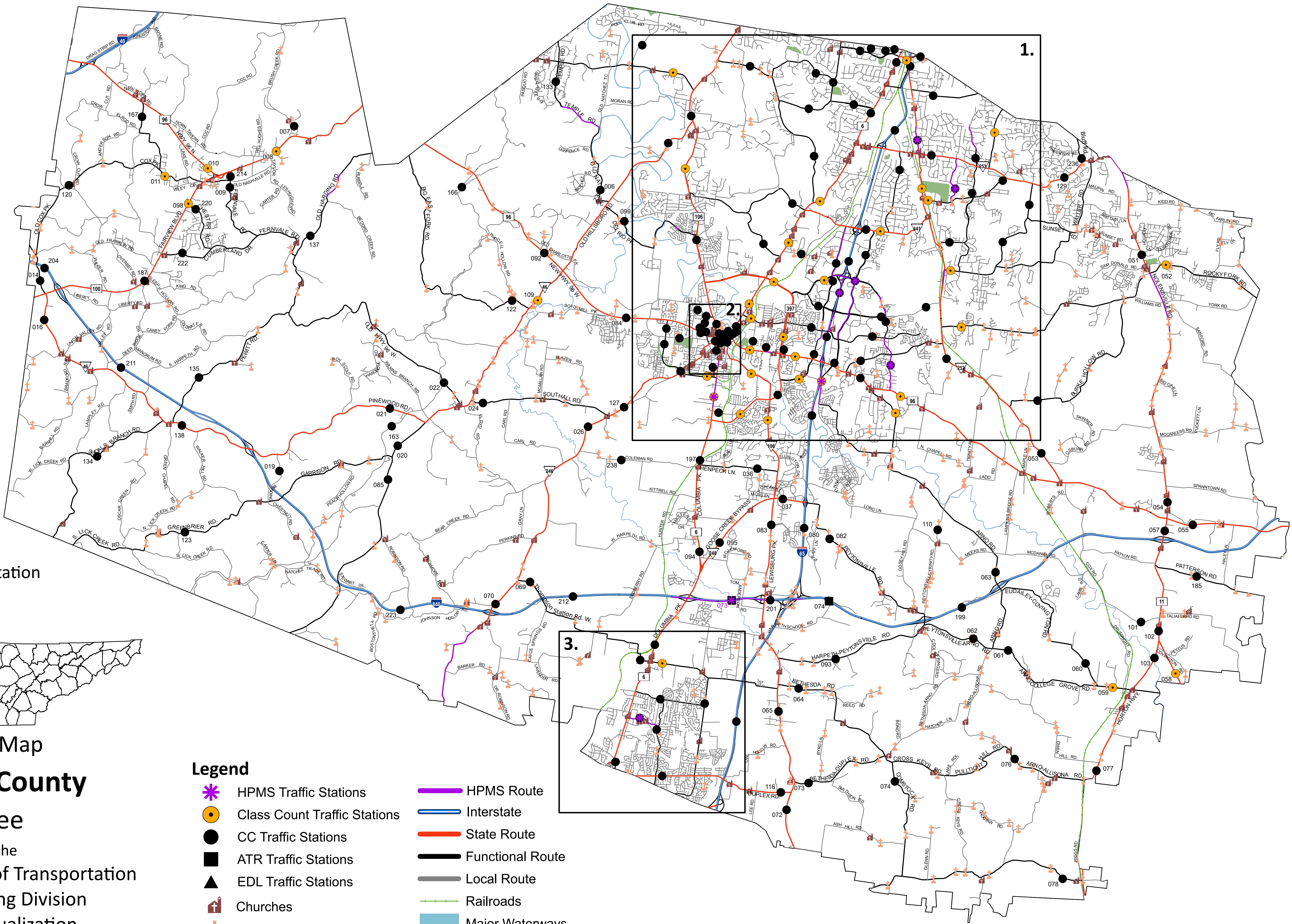
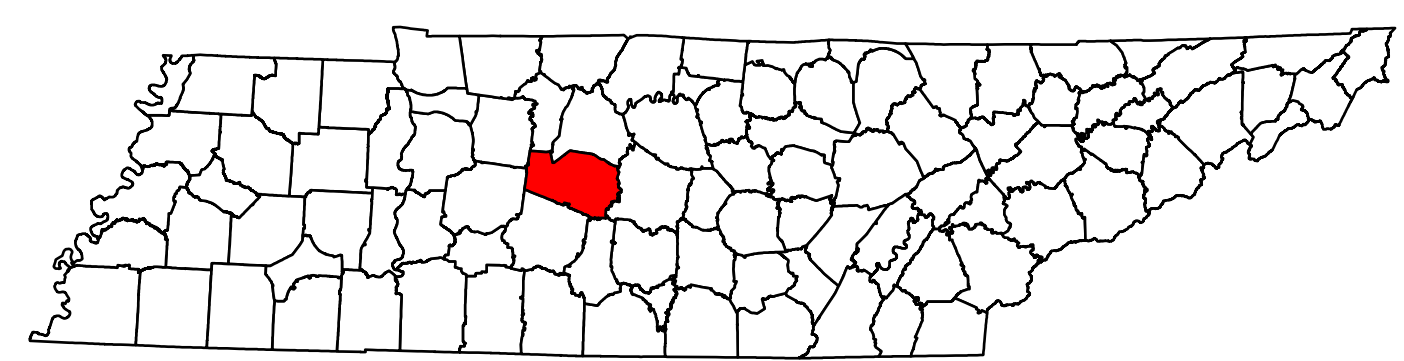
EDL Traffic Stations

- 056
- 198

ATR Traffic Stations

- 073 074

- Inset:
- 1. Brentwood/Franklin
 - 2. Franklin Downtown
 - 3. Spring Hill/ Thompson's Station



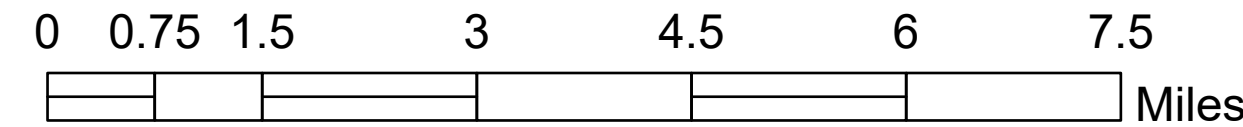
2023 Traffic Map

**Williamson County
Tennessee**

Prepared by the
 Tennessee Department of Transportation
 Long Range Planning Division
 Office of Data Visualization

Legend

- * HPMS Traffic Stations
- HPMS Route
- Class Count Traffic Stations
- Interstate
- CC Traffic Stations
- State Route
- ATR Traffic Stations
- Functional Route
- ▲ EDL Traffic Stations
- Local Route
- ✝ Churches
- Railroads
- ✝ Cemeteries
- Major Waterways
- Parks
- Municipal Boundary



1.

1. Brentwood/Franklin

CC Traffic Stations

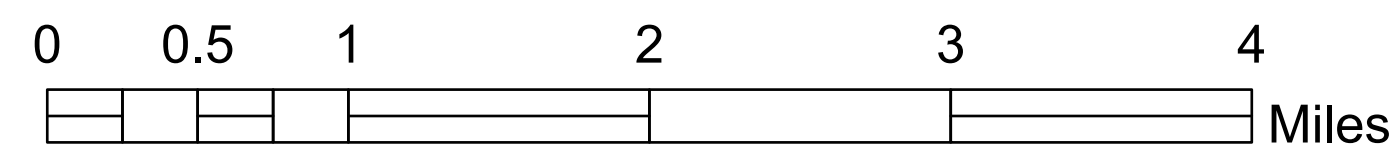
001 034 049 114 141 161 176 189 209 235
 002 035 079 115 142 162 177 191 215 237
 003 038 081 117 143 164 178 192 216
 004 039 090 119 144 165 179 194 217
 005 040 096 121 145 168 180 195 218
 027 041 097 131 146 169 181 196 219
 028 044 100 132 147 172 182 203 224
 031 045 111 136 158 173 183 205 225
 032 046 112 139 159 174 186 206 226
 033 048 113 140 175 188 207 233

EDL Traffic Station

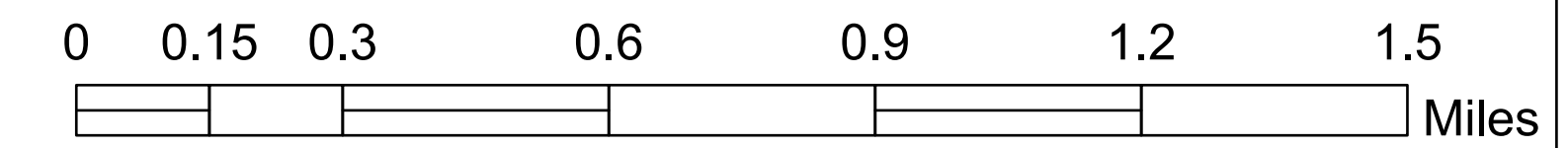
042 030 190
 043 157 160

Legend

- HPMS Traffic Stations
- Class Count Traffic Stations
- CC Traffic Stations
- ATR Traffic Stations
- EDL Traffic Stations
- Churches
- Cemeteries
- HPMS Route
- Interstate
- State Route
- Functional Route
- Local Route
- Railroads
- Major Waterways
- Parks
- Municipal Boundary



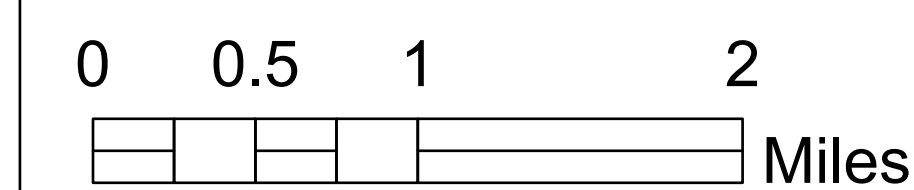
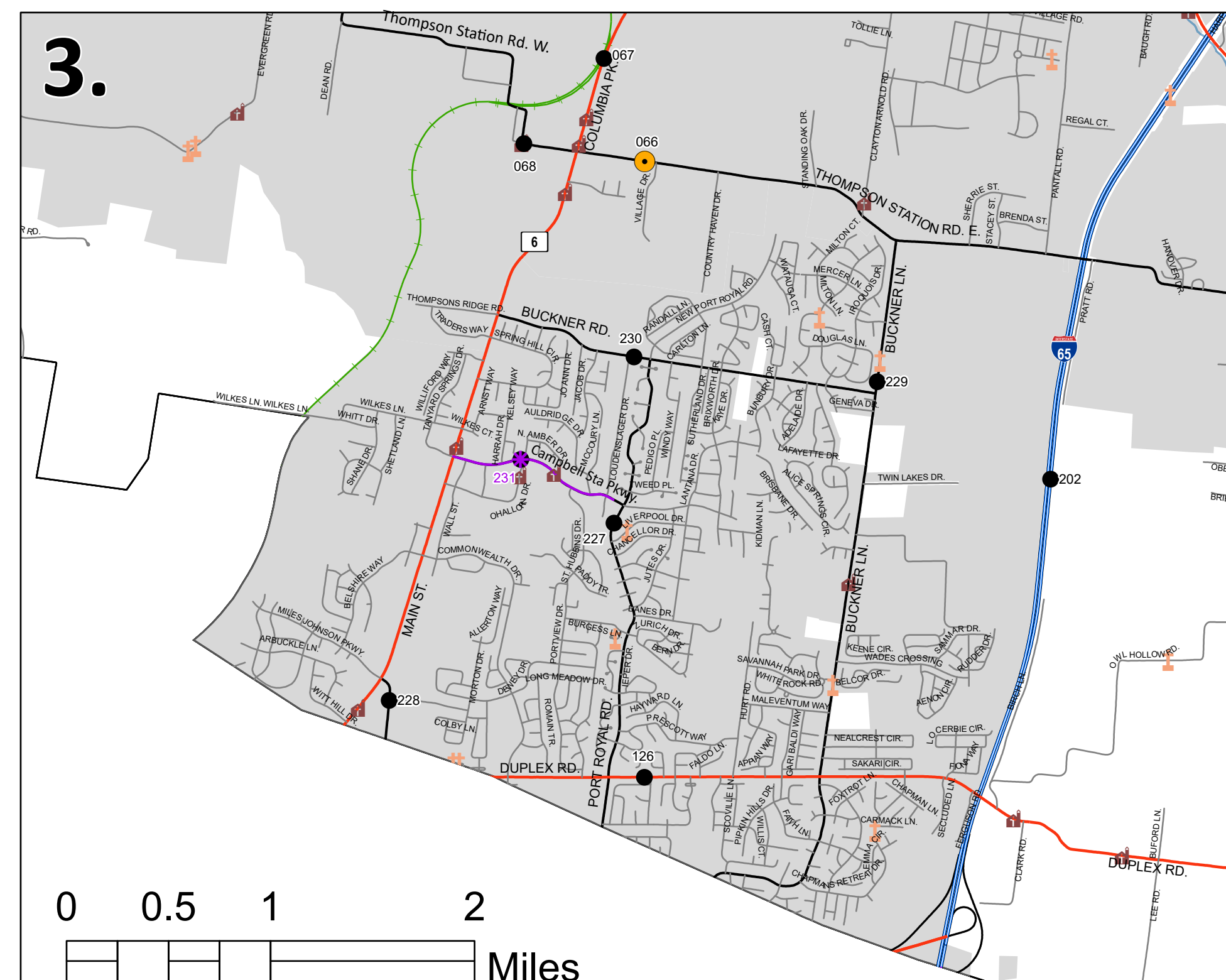
2.



2. Franklin Downtown

CC Traffic Stations

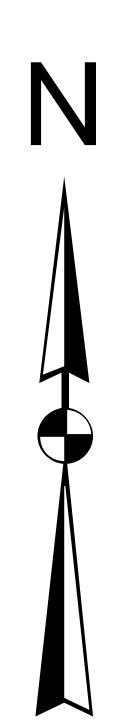
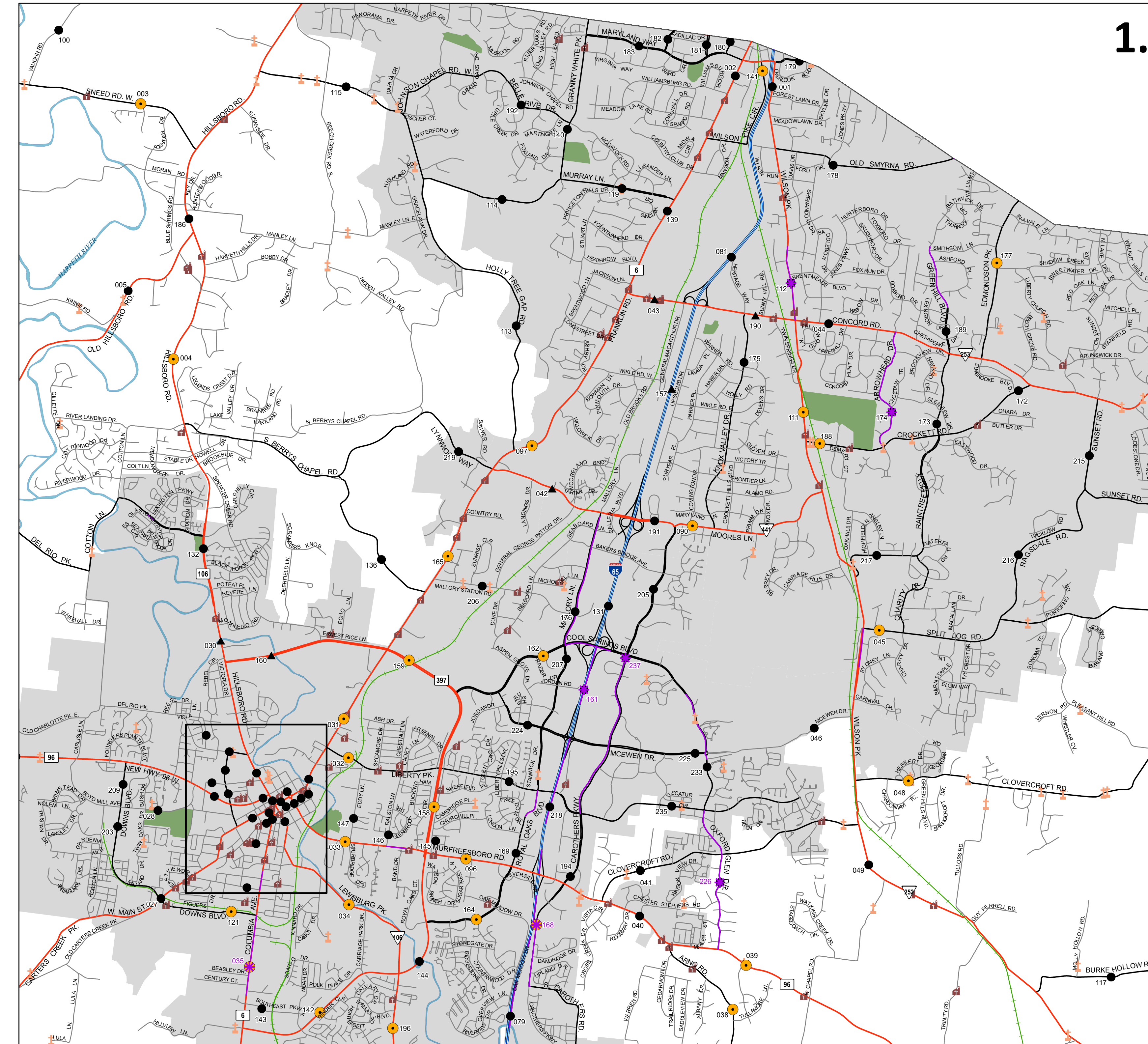
029 086 087 088 089 104 105 106 107 108
 124 148 149 150 151 152 153 154 155 156
 170 171 193



3. Spring Hill/Thompson's Station

CC Traffic Stations

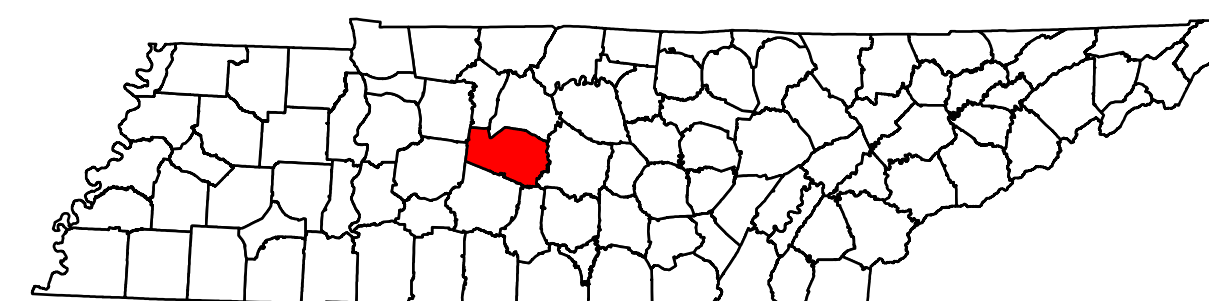
066 067 068 126 202 227 228 229 230 231



2023 Traffic Map Williamson County

Tennessee

Prepared by the
 Tennessee Department of Transportation
 Long Range Planning Division
 Office of Data Visualization



066 067 068 126 202 227 228 229 230 231

Williamson County

1

Station #	AADT
001	9,540
002	21,327
003	11,007
004	15,950
005	4,289
006	2,444
007	839
008	10,031
009	745
010	8,406
011	1,977
014	1,842
016	901
019	596
020	1,756
021	1,737
022	496
024	2,724
026	4,861
027	7,875
028	5,407
029	399
030	18,198
031	13,353
032	6,655
033	19,656
034	7,503
035	20,986
036	3,430
037	17,753
038	5,492
039	14,885
040	21,056
041	4,195
042	17,725
043	18,386
044	22,059
045	11,779
046	11,640
048	7,847
049	3,116
051	13,218
052	8,362
053	1,983
054	8,087
055	4,952
056	8,970
057	12,818
058	6,075
059	2,050
060	785
061	2,069
062	3,323
063	4,356

Station #	AADT
064	1,706
065	7,043
066	3,663
067	20,189
068	3,993
069	1,039
070	3,704
072	5,337
073	30,377
073	2,416
074	41,839
074	615
076	2,309
077	4,342
078	821
079	118,761
080	109,713
081	128,294
082	2,062
083	6,851
084	13,340
085	1,447
086	6,097
087	16,173
088	13,759
089	16,337
090	19,962
092	6,927
093	2,109
094	13,091
095	5,481
096	31,982
097	23,938
098	14,773
099	2,592
100	4,960
101	2,664
102	10,523
103	5,350
104	7,206
105	18,422
106	10,624
107	8,913
108	5,903
109	3,886
110	994
111	9,848
112	8,032
113	3,376
114	6,860
115	5,961
116	4,217
117	742
119	12,716

Station #	AADT
120	903
121	14,978
122	279
123	189
124	2,105
126	8,549
127	6,874
129	12,373
131	149,387
132	16,922
133	4,017
134	324
135	280
136	1,985
137	703
138	1,668
139	20,705
140	7,780
141	4,802
142	12,733
143	3,539
144	20,234
145	1,043
146	2,065
147	3,079
148	3,193
149	3,539
150	1,506
151	5,294
152	2,462
153	7,086
154	1,677
155	1,494
156	5,024
157	153,149
158	14,693
159	23,973
160	19,868
161	138,687
162	24,249
163	508
164	24,014
165	9,051
166	842
167	856
168	13,323
169	16,841
170	10,052
171	3,633
172	5,620
173	2,265
174	847
175	2,864
176	25,941

