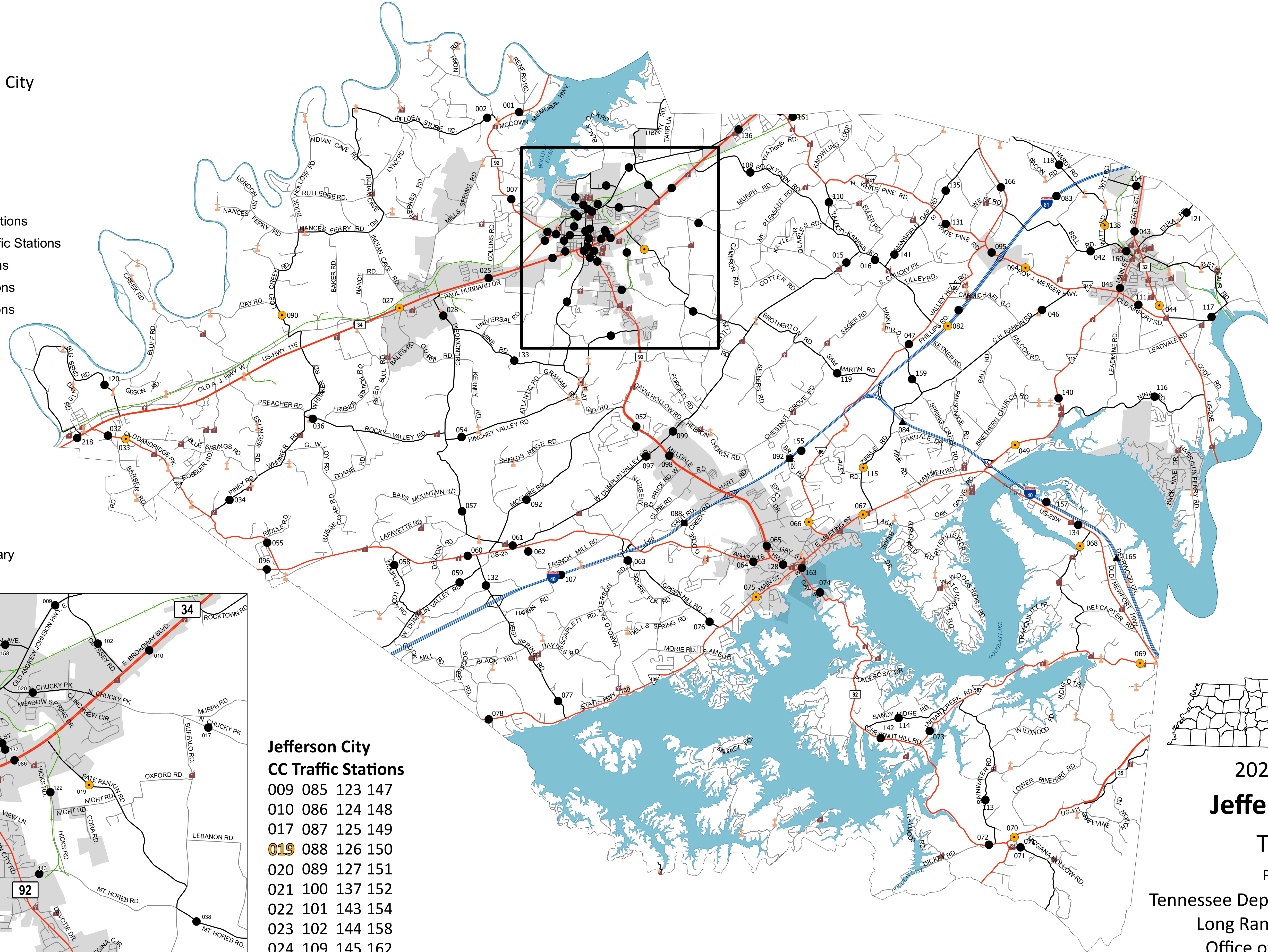


Inset:  
Jefferson City

### Legend

- HPMS Traffic Stations
- Class Count Traffic Stations
- CC Traffic Stations
- ATR Traffic Stations
- EDL Traffic Stations
- Churches
- Cemeteries
- HPMS Route
- Interstate
- State Route
- Functional Route
- Local Route
- Railroads
- Major Waterways
- Parks
- Municipal Boundary



### CC Traffic Stations

- 001 058 **090** 132
- 002 059 092 133
- 007 060 **094** 134
- 015 061 095 135
- 016 062 096 136
- 025 063 097 **138**
- 027** 064 098 140
- 028 065 099 141
- 032 **066** 107 142
- 033** **067** 108 155
- 034 **068** 110 156
- 036 **069** 111 157
- 042 **070** 113 159
- 043 071 114 160
- 044** 072 **115** 161
- 045 073 116 163
- 046 074 117 164
- 047 **075** 118
- 049** 076 119
- 052 077 120
- 054 078 121
- 055 **082** 128
- 057 083 131

### ATR Traffic Stations

- 088 092

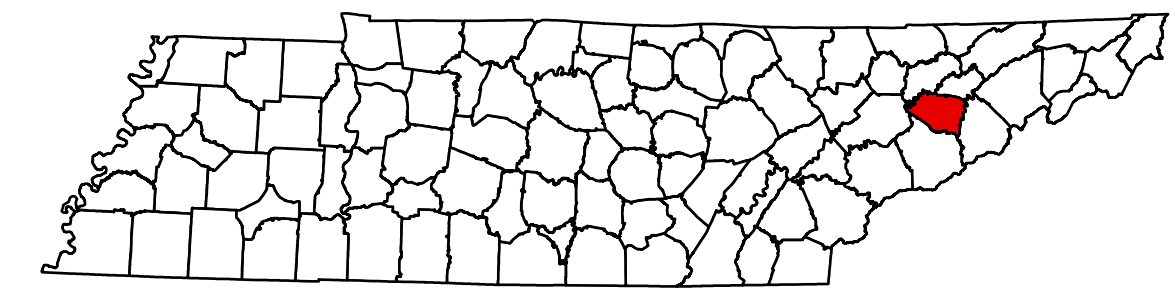
### EDL Traffic Stations

- 084 165

### Jefferson City

#### CC Traffic Stations

- 009 085 123 147
- 010 086 124 148
- 017 087 125 149
- 019** 088 126 150
- 020 089 127 151
- 021 100 137 152
- 022 101 143 154
- 023 102 144 158
- 024 109 145 162
- 038 122 146



## 2023 Traffic Map Jefferson County Tennessee

Prepared by the  
Tennessee Department of Transportation  
Long Range Planning Division  
Office of Data Visualization

