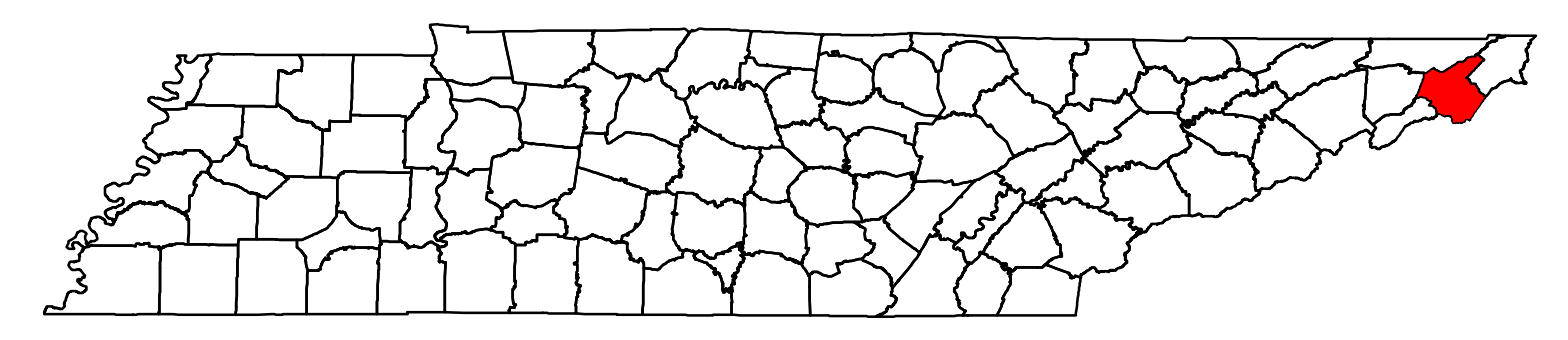
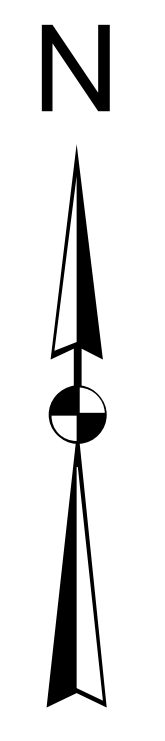
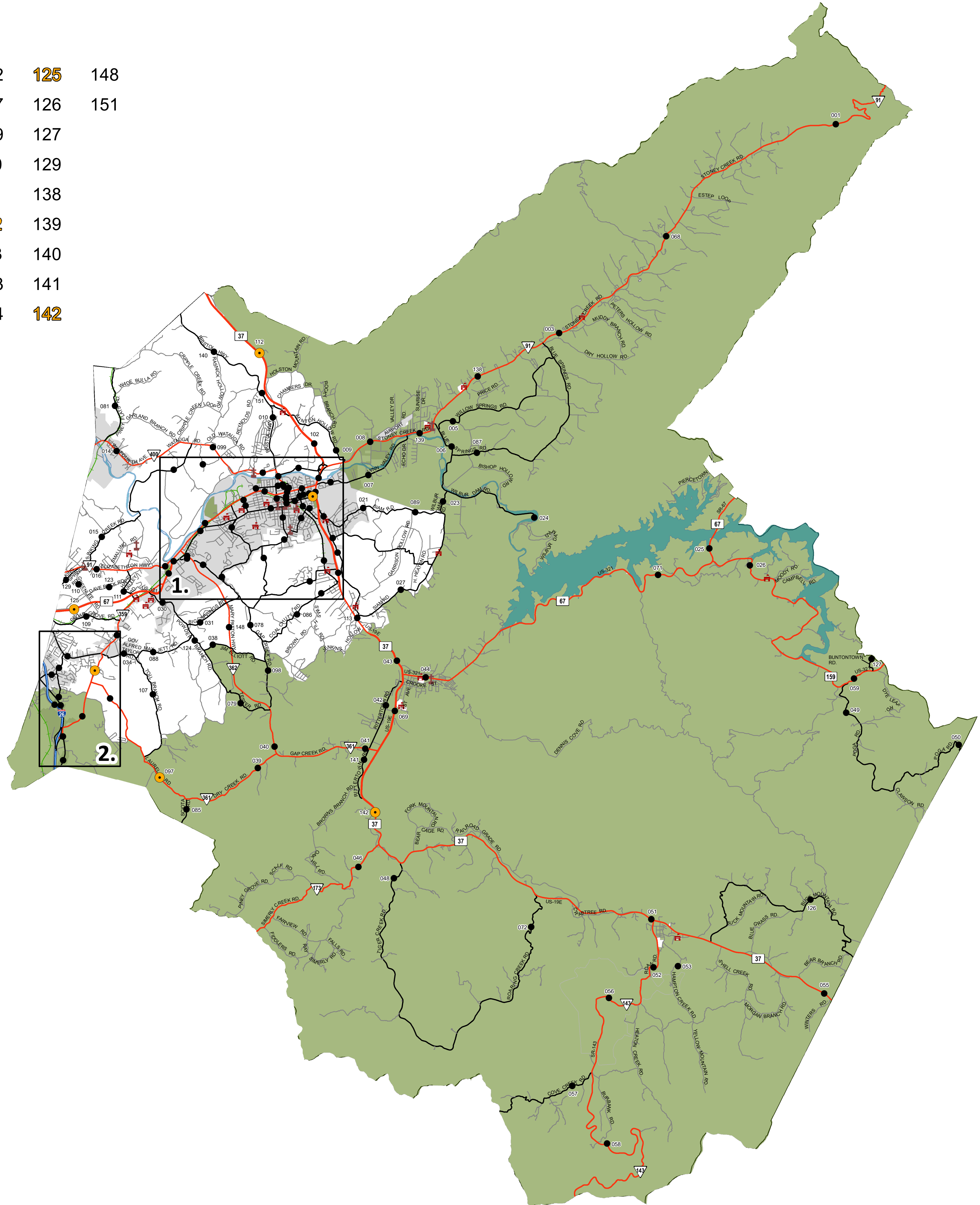


CC Traffic Stations

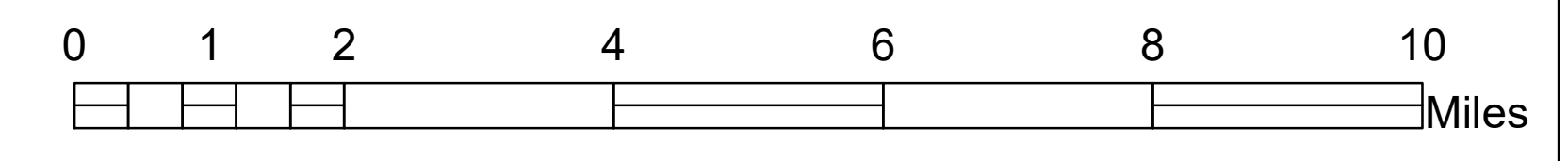
001	015	031	046	057	081	102	125	148
003	016	034	048	058	085	107	126	151
005	021	038	049	059	086	109	127	
006	023	039	050	068	087	110	129	
007	024	040	051	069	088	111	138	
008	025	041	052	071	089	112	139	
009	026	042	053	072	097	113	140	
010	027	043	055	078	098	123	141	
014	030	044	056	079	099	124	142	

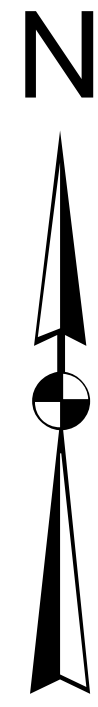
Insets
 1. Elizabethton
 2. Johnson City

- Legend**
- HPMS Traffic Stations
 - Class Count Traffic Stations
 - CC Traffic Stations
 - ATR Traffic Stations
 - EDL Traffic Stations
 - Churches
 - Schools
 - HPMS Route
 - Interstate
 - State Route
 - Functional Route
 - Local Route
 - Railroads
 - Major Waterways
 - Parks
 - Municipal Boundary

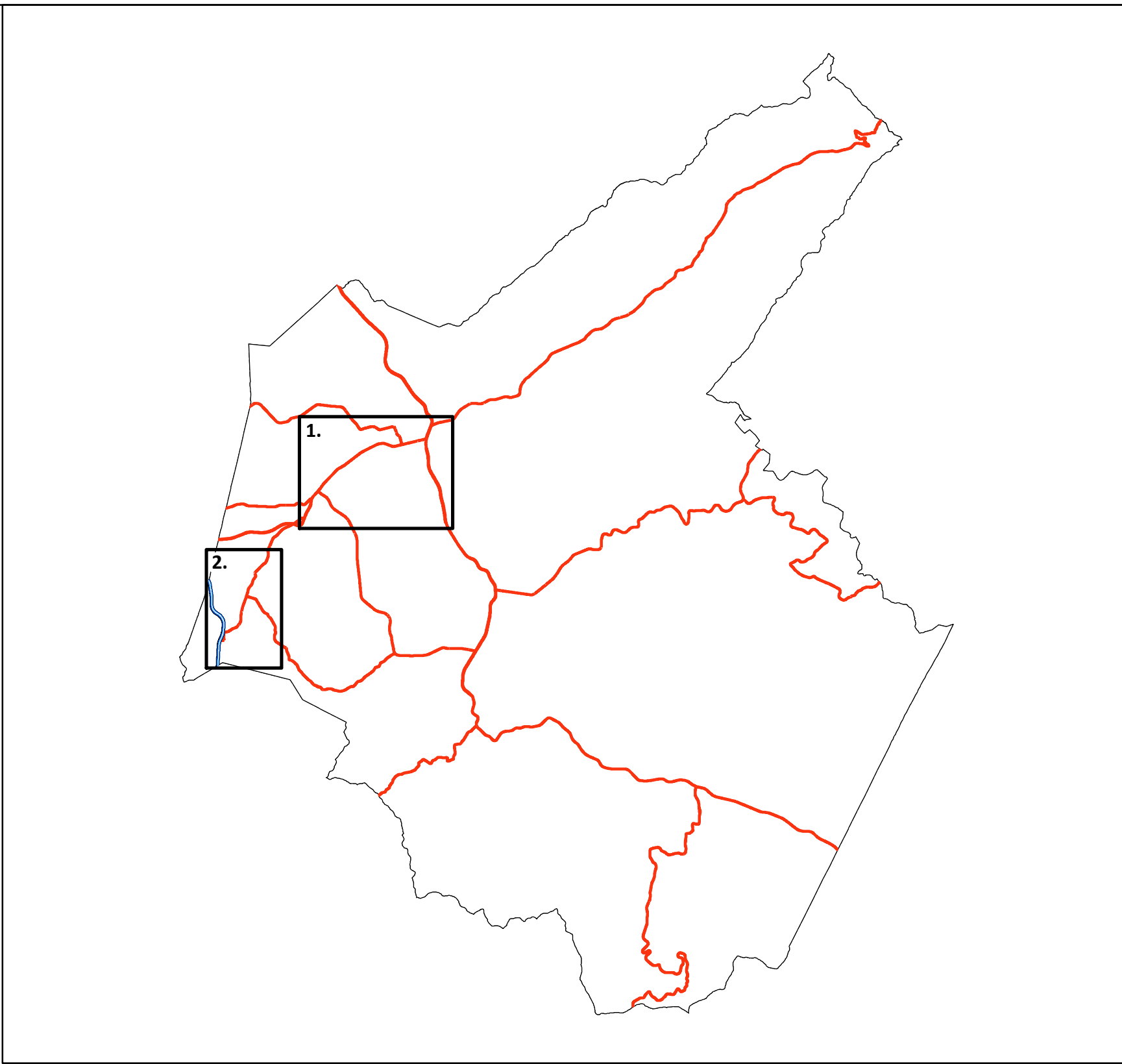


2019 Traffic Map
Carter County
 Tennessee
 Prepared by the
 Tennessee Department of Transportation
 Long Range Planning Division
 Office of Data Visualization





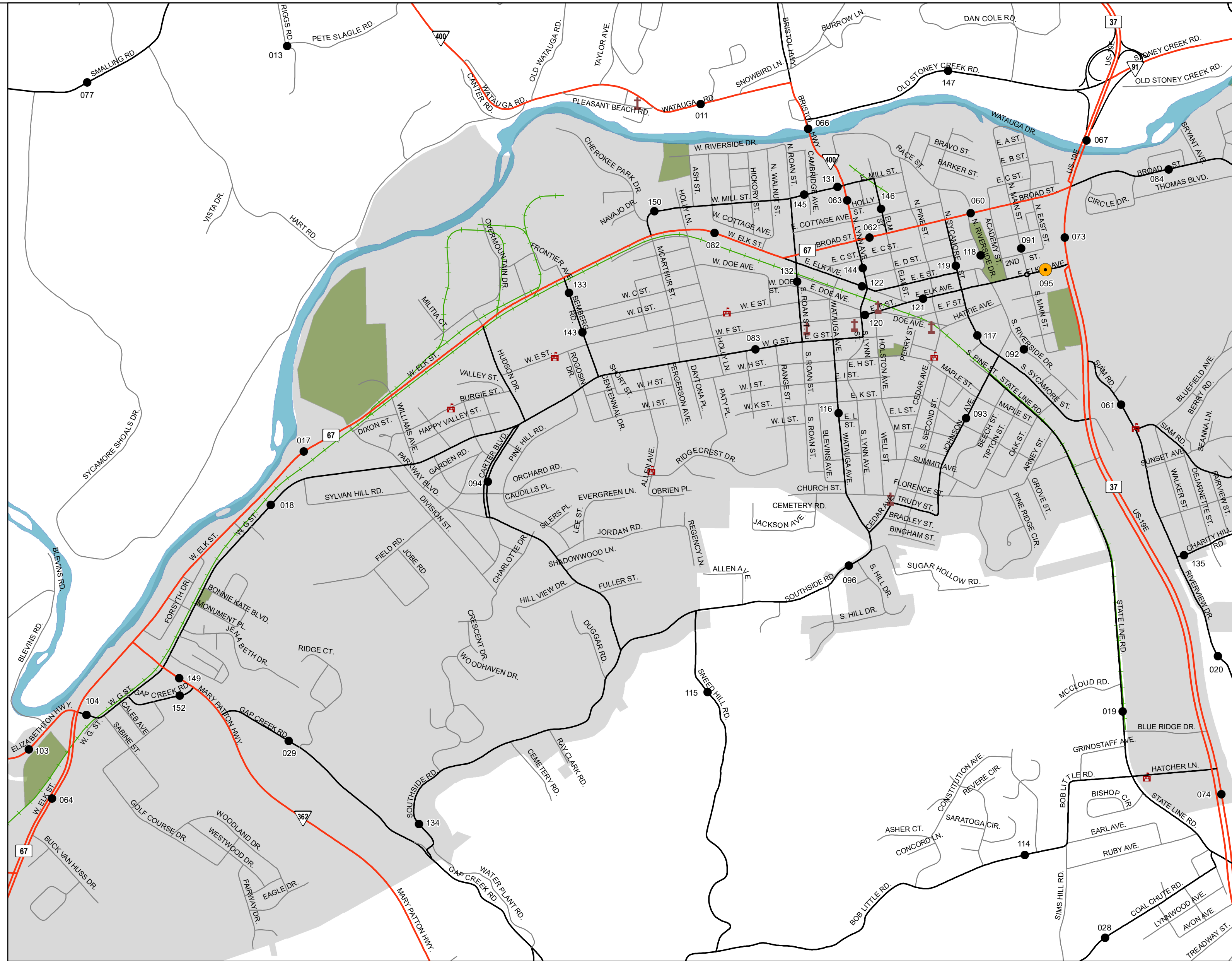
Insets
 1. Elizabethton
 2. Johnson City



1. Elizabethton

CC Traffic Stations

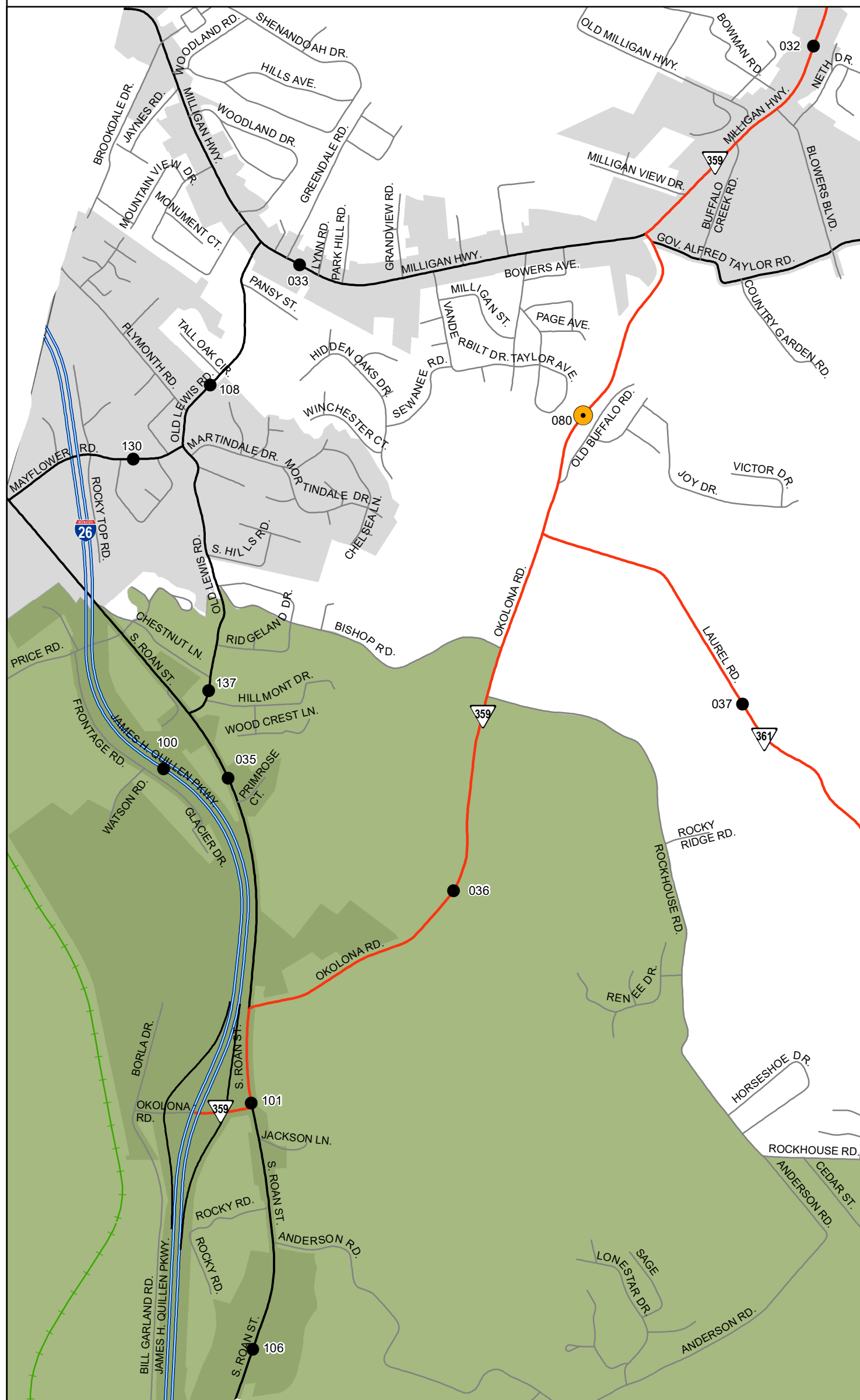
011	066	096	132
013	067	103	133
017	073	104	134
018	074	114	135
019	077	115	143
020	082	116	144
028	083	117	145
029	084	118	146
060	091	119	147
061	092	120	149
062	093	121	150
063	094	122	152
064	095	131	



2. Johnson City

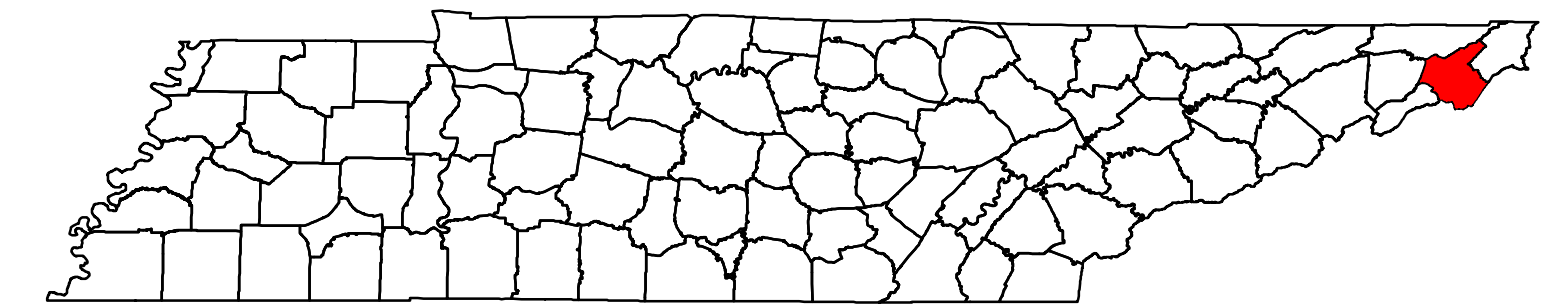
CC Traffic Stations

032	037	106
033	080	108
035	100	130
036	101	137

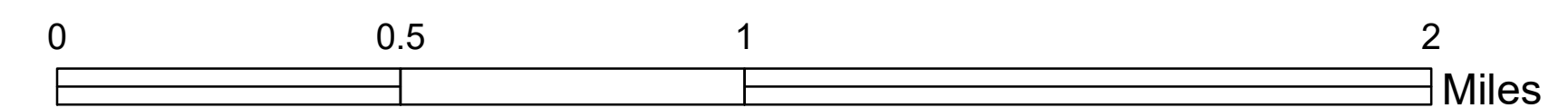


Legend

- HPMS Traffic Stations
- Class Count Traffic Stations
- CC Traffic Stations
- ATR Traffic Stations
- EDL Traffic Stations
- Churches
- Schools
- HPMS Route
- Interstate
- State Route
- Functional Route
- Local Route
- Railroads
- Major Waterways
- Parks
- Municipal Boundary



2019 Traffic Map
Carter County
 Tennessee
 Prepared by the
 Tennessee Department of Transportation
 Long Range Planning Division
 Office of Data Visualization



Carter County Traffic Stations

Page 1

Station #	AADT
1	342
3	5,277
5	608
6	3,026
7	2,814
8	14,156
9	595
10	2,803
11	6,601
13	128
14	4,325
15	314
16	6,276
17	24,817
18	9,171
19	2,799

Station #	AADT
20	303
21	1,637
23	860
24	341
25	3,742
26	1,788
27	1,889
28	929
29	2,950
30	2,653
31	1,038
32	8,050
33	9,623
34	1,876
35	5,176
36	2,947

Station #	AADT
37	1,709
38	603
39	1,570
40	4,681
41	6,077
42	862
43	14,525
44	7,725
46	1,220
48	586
49	468
50	226
51	7,132
52	2,486
53	464
55	5,692

Station #	AADT
56	1,708
57	670
58	267
59	1,451
60	25,682
61	6,354
62	22,784
63	7,611
64	29,697
66	11,444
67	22,508
68	1,650
69	8,840
71	5,054
72	122
73	20,594

Carter County Traffic Stations Page 2

Station #	AADT
74	17,230
77	840
78	3,146
79	145
80	2,929
81	1,381
82	26,466
83	9,030
84	4,198
85	652
86	528
87	778
88	1,091
89	678
91	1,833
92	69

Station #	AADT
93	536
94	2,887
95	4,868
96	1,251
97	1,118
98	3,281
99	4,826
100	22,600
101	6,584
102	9,370
103	6,379
104	11,491
106	4,403
107	464
108	2,326
109	534

Station #	AADT
110	224
111	1,104
112	10,146
113	2,632
114	2,082
115	194
116	1,511
117	4,973
118	324
119	2,286
120	5,232
121	4,035
122	5,015
123	625
124	750
125	26,322

Station #	AADT
126	244
127	179
129	1,194
130	1,789
131	447
132	1,179
133	4,690
134	1,336
135	347
137	653
138	6,454
139	10,594
140	775
141	447
142	7,300
143	4,446

Carter County Traffic Stations

Page 3

Station #	AADT
144	4,805
145	4,397
146	233
147	3,304
148	5,076
149	2,794
150	4,086
151	2,114
152	1,280