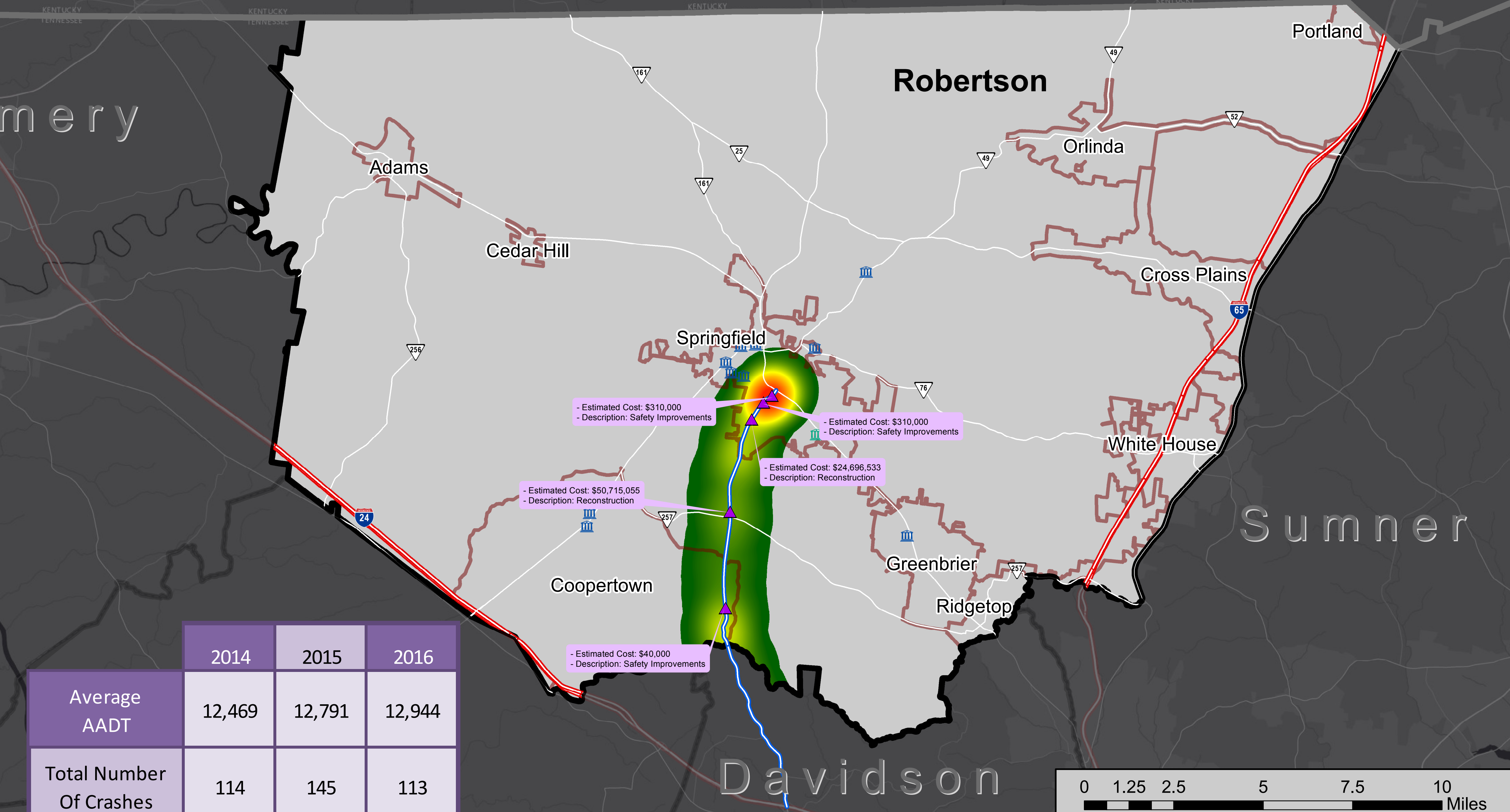
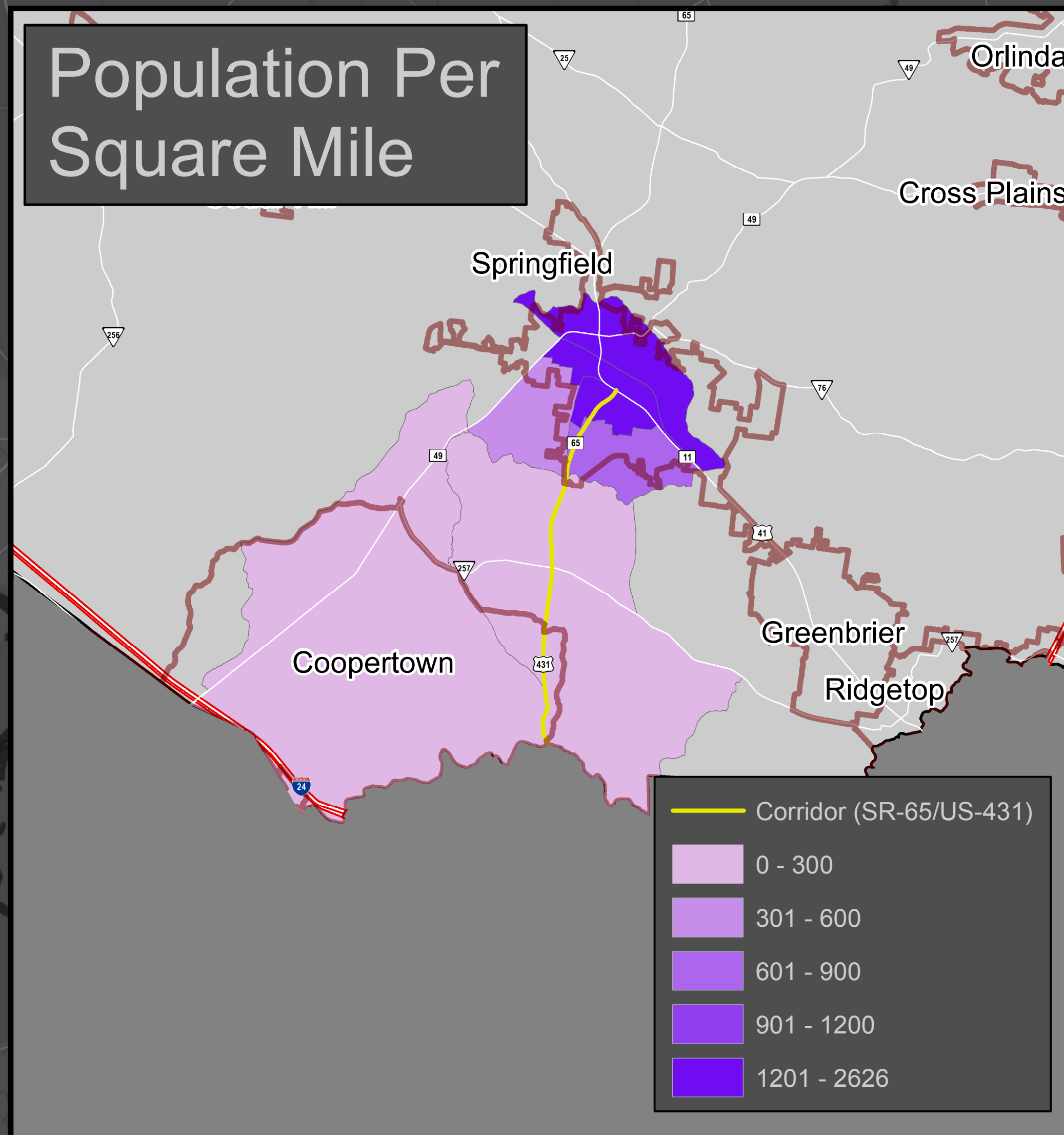
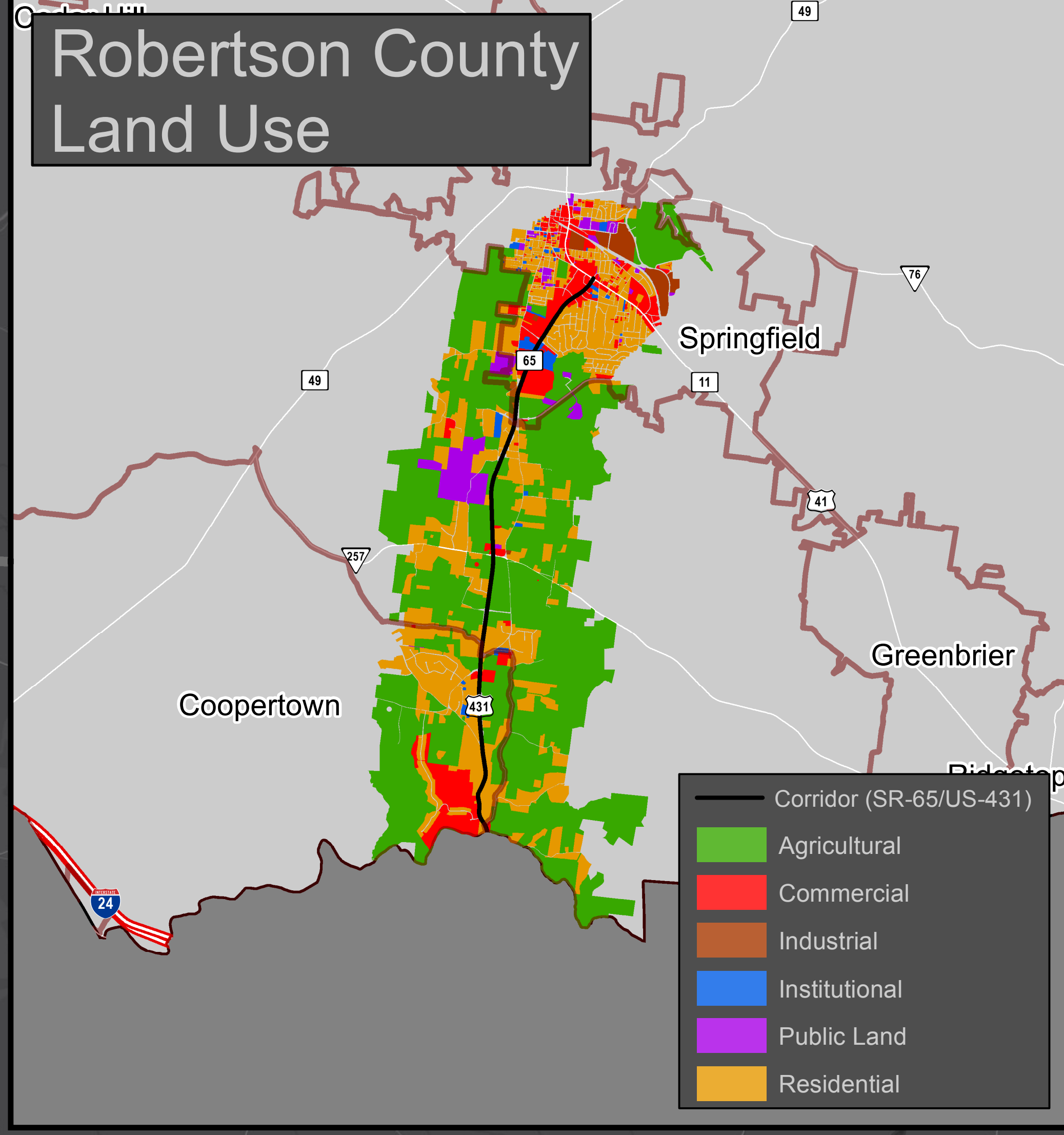


Corridor Management Agreement Crashes (2014-2016)

SR-65/US-431
Length: 12.53 Miles



	2014	2015	2016
Average AADT	12,469	12,791	12,944
Total Number Of Crashes	114	145	113
Total Number Of Injuries	44	65	36
Total Number Of Fatal Crashes	2	1	0
Crashes During Peak AM Hours (6am-8am)	9	12	11

Legend

- Public Schools (10)
- Private Schools (1)
- PPRM Projects (5)
- SPOT Projects (0)
- City Boundaries
- County Boundaries

Road Type

- Interstates
- State Routes
- Corridor (SR-65/US-431)

Crash Density

High (Red/Orange) to Low (Green)