

**CNT336 Hamilton County
SR-317 (Apison Pike) Mandatory Pre-
Bid Meeting
Letting Date: December 13, 2019**

Pre-Qualification Requirements

Standard Pre-Qualifications still apply.

- Please check to make sure your TDOT Pre-qualification is not expired
- Contractors with an expired prequalification that has surpassed the 90 day grace period will not be authorized to bid
- Prospective Bidders must have filed their standard prequalification questionnaire at least 14 days preceding the date of letting.

Pre-Qualification Requirements

Special Pre-Qualification

- Special Pre-qualification Packages are due to HQ Construction no later than Friday, November 22, at 10:00 a.m. CST
- Contractors will be notified of Qualification Status by Friday, November 29, 2019 at 4:30 p.m. CST
- Contractors must still request bid-authorization by 4:00 p.m. CST on Thursday, December 12, to be able to bid.

Pre-Qualification Requirements

Questions:

Please submit RFIs by email to Jamie.Fitzpatrick@tn.gov.

Please submit with subject line as, "CNT336 Hamilton RFI"

RFIs will be accepted up until Friday, December 6, at 4:00 p.m. CST.

Responses will be posted on TDOT Construction webpage.

Scope and Overview of Project

3.092 mile section of State Route 317 from SR 321 (Ooltewah Ringgold Road) to east of Layton Lane

ADT: 11,650

Designer: **CDM Smith**

Grade, Drain, Base, Pave, Bridge, Retaining Walls, Signalization, Signs, Lighting, Pavement Marking, and Utilities

Scope and Overview of Project

5 Lane Curb and Gutter Section with 4 foot Shoulders/Bike Lanes

5 Bridges

9 Retaining Walls

790,000+ CY of estimated Road & Drainage

36,000+ Tons of estimated GSR

Roundabout on new Tallant Road

Scope and Overview of Project

Bridge 1 is a 10 span bridge over NSRR, Wolftever Creek Greenway, and Spalding Drive containing continuous steel welded plate girders on the main spans and prestressed concrete bulb-tee beams in the approach spans.

Total length of the bridge is 1,514 feet.

Bridges 2,3 & 5 contain drilled shafts

Scope and Overview of Project

Utilities

Water: Eastside Utility District

Sewer: City of Collegedale

Gas: Chattanooga Gas Company, Spectra Energy, Plantation Pipeline

Electric: Electric Power Board

Cable: Comcast (Xfinity)

Fiber Optics: AT&T

Telephone: Centurylink Communications, Bellsouth DBA AT&T

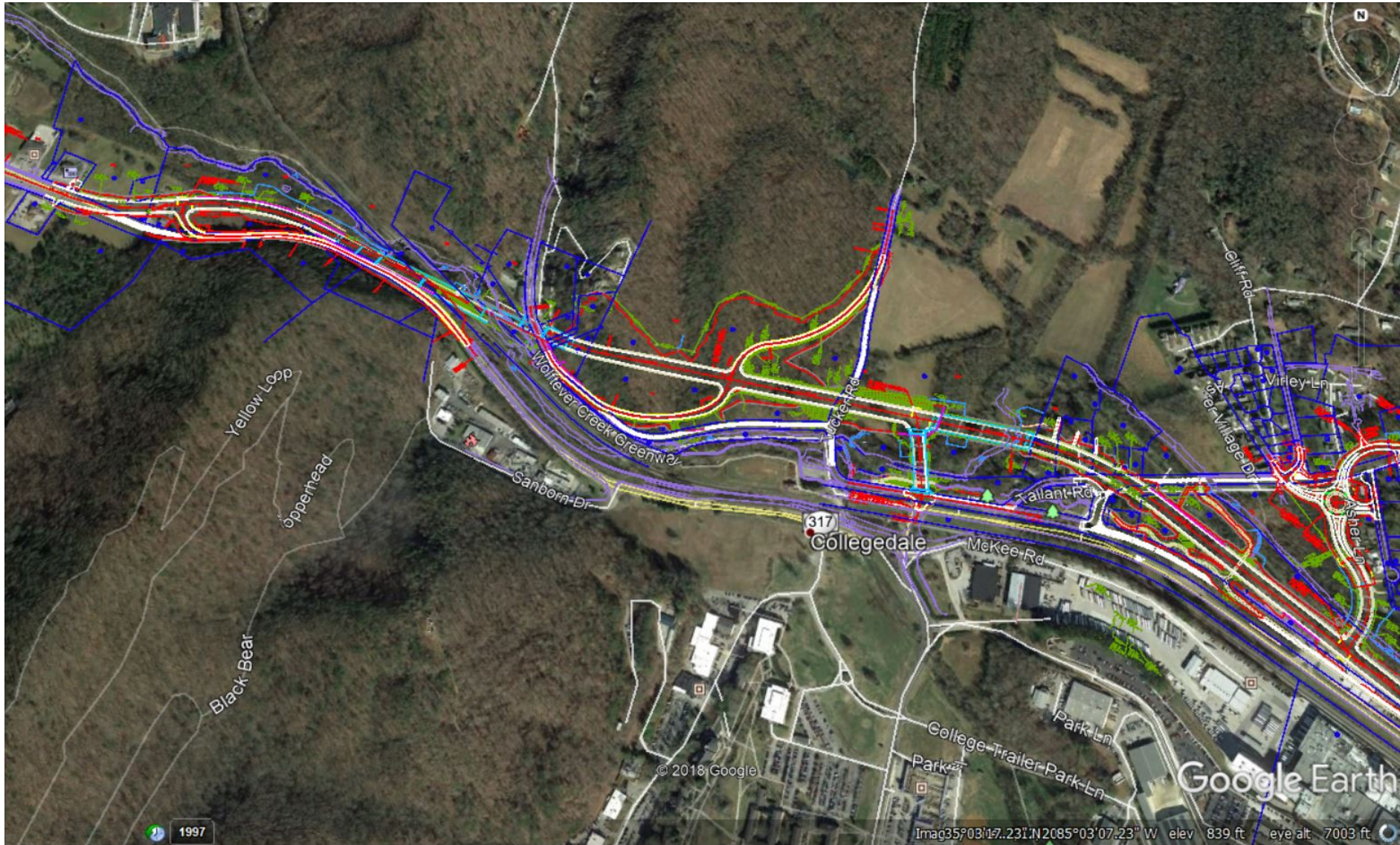
McKee Foods

Scope and Overview of Project

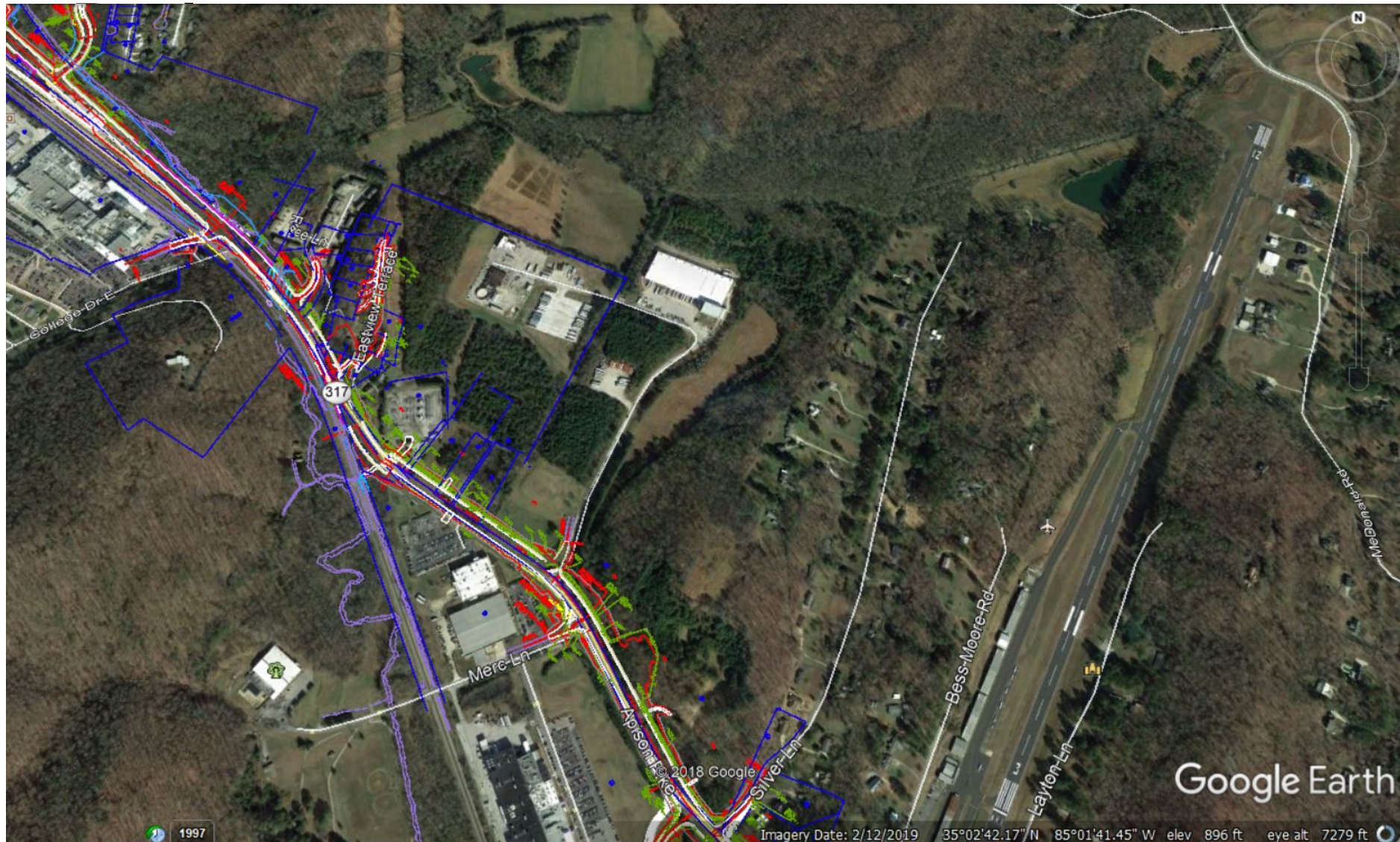
Completion date is June 30, 2025.

Project CEI is Neel-Schaffer

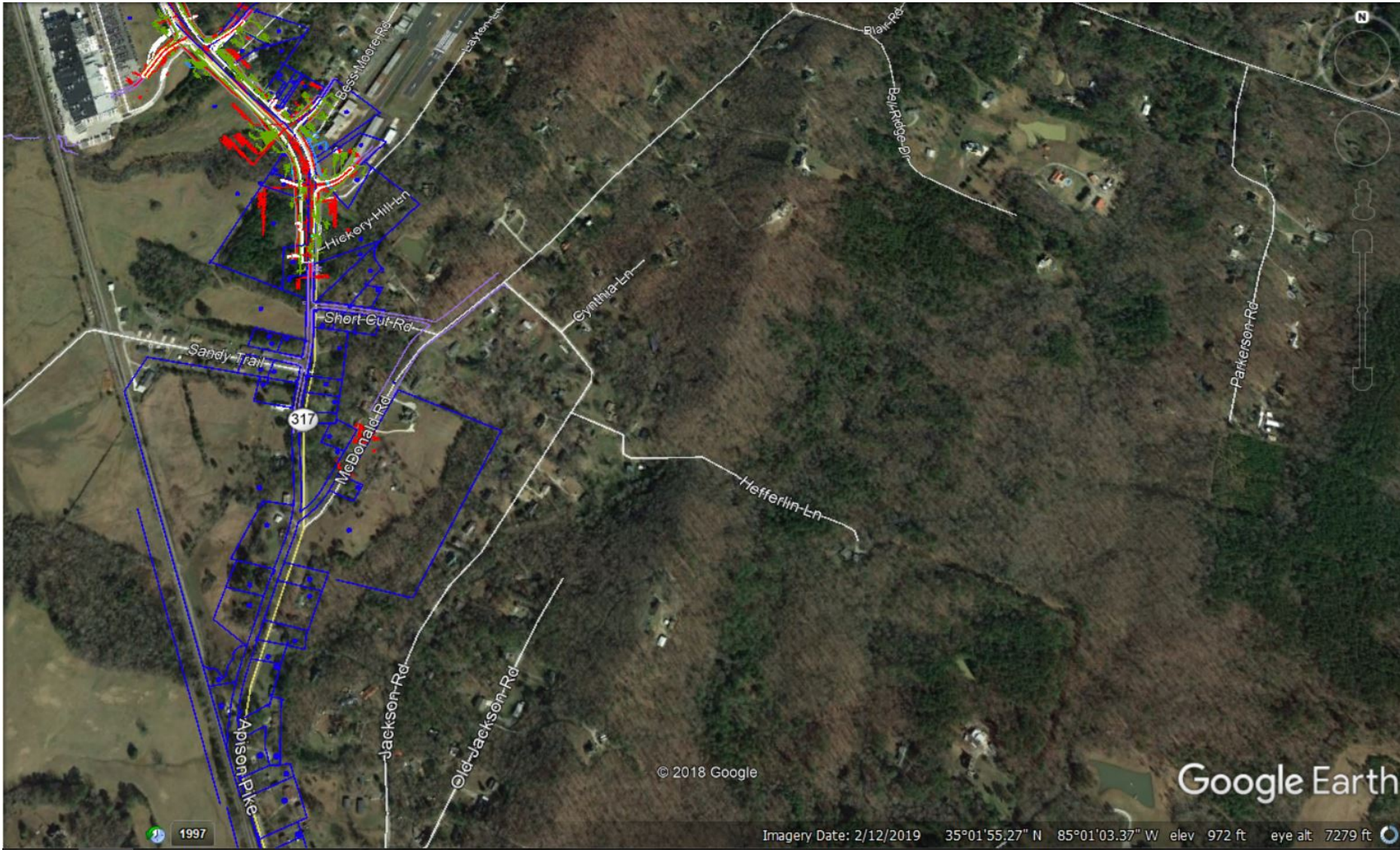
Scope and Overview of



Scope and Overview of



Scope and Overview of



Special Provision 108B

The contractor shall plan his schedule of operations so as to anticipate being able to work in and over the Railroad ROW until after December 31, 2020. The contractor shall not order materials for the construction of Bridge 1 until clearance to do so is granted by the Engineer, or until March 31, 2020, whichever occurs first.

Special Provision 108B

The contractor shall be allowed to close College Drive East at the railroad crossing and the intersection of SR-317 for a period not to exceed thirty (30) days to raise the grade of the crossing and the intersection. The closure shall occur during the summer months when regular classes are not in session at Southern Adventist University and while traffic is not impeded by work at University Drive.

Special Provision 108B

Traffic shall be returned to a two-lane configuration on College Drive East on the asphalt binder at the conclusion of the 30 days. LDs will be assessed at a rate of \$6,000/day for each day, or portion thereof, in which the intersection and crossing is not open to traffic. The contractor shall coordinate with McKee Foods at least 7 days prior to any temporary closures.

Special Provision 108B

The contractor shall coordinate with McKee Foods at least 7 days before performing any work that will temporarily disrupt utility services to the plant. The contractor shall plan the utility construction operations such that disruptions to services to McKee Foods only take place from one hour before sundown on Friday to one hour after sundown on Saturday.

Special Provision 108B

Temporary lane closures on SR-317 shall be performed between the hours of 8:00 p.m. and 5:00 a.m. and no lane closures should be planned during the time periods from 30 minutes before to 30 minutes after shift changes. Shifts are as follows:

6A-2P

2P-10P

10P-6A

Special Provision 108B

No lane closures will be allowed during Special Events, Holidays or Holiday weekends in accordance with the plans and specifications, or as directed by the Engineer.

Liquidated damages shall be assessed at a rate of \$12,000/day for each day, or portion thereof, in which the Work is not completed after the approved completion date.

Project Commitments

Sensitive Environmental area located north of the proposed ROW between Stations 132+00 and 133+00. The Contractor must cordon off this area with Hi-vis fence and must avoid all ground disturbing activities, including staging of heavy equipment, excavation of borrow, dumping or storage of fill, and vegetation removal. If the area is inadvertently disturbed, notify TDOT Environmental Division immediately!

Project Commitments

In regard to the Wolftever Creek Greenway:

Notify TDOT Environmental Division immediately in writing before modifying any design features!

In as many areas as possible, the new greenway will be constructed before the existing greenway is abandoned.

If it is necessary to close the greenway for any reason, work will be done at night when the greenway is closed.

Project Commitments

In regard to the Wolftever Creek Greenway:

If temporary loss of public access is required, the temporary closure will be limited to 24-hour durations with at least five working dates between closures. No closures will be allowed on weekends or Federal holidays.

If a situation occurs during construction that causes a safety problem, the greenway will be shut down immediately and the situation resolved as quickly as possible so it can reopen.

Project Commitments

In regard to the Wolftever Creek Greenway:

Hi-vis fence will be utilized to restrict public access to the active construction site.

Notices of potential temporary greenway closures will be posted at trailheads and on the City of Collegedale's website

In the event APM is uncovered, construction monitoring, testing, and remediation shall be followed in accordance with SP107L and other guidance as per project commitments

Worth Noting

- Railroad: Approximately 30 trains per day. Contractor shall coordinate with NSRR. NSRR must approve plans for setting beams over the tracks.
- Side roads will not be allowed to be closed and detoured, except as shown in the plans and as described in SP108B.

Questions

Please submit RFI's no later than Friday, December 6, at 4:00 p.m. CST.

Responses will be posted on TDOT's website.