

Tennessee

AIRPORT DIRECTORY



Tennessee

AIRPORT DIRECTORY

Published by:

Tennessee Department of Transportation

This directory is compiled from the best available information on file as of 2018, including FAA Airport Facility Records, Airman's Information Manual, and state airport license data. It is printed for information only. Prior to making flights into these listed airports, the current Airman's Information Manual (AIM) and Chart Supplement should be consulted. Military airports have been excluded.

It is unlawful to operate a public use airport without an appropriate license as provided by the Tennessee Department of Transportation.

Any corrections or additions to this directory should be forwarded to the Tennessee Department of Transportation, Aeronautics Division.

NOTICE: This directory is provided by the Tennessee Aeronautics Division and is **not for sale.**

CONTENTS

Title Page.....	Inside cover
Table of Contents.....	i
Automated Weather Observation Stations.....	ii
ASOS Phone Numbers.....	iii
FSS Discrete Frequencies.....	iii
Airport Location Identifiers.....	iv & v
Key Airport Information.....	vi & vii
Telephone Numbers for FSS and Weather Bureaus.....	viii
Airports: Photographs and Facility Data.....	1– 79
Map of ATC Center and Approach Frequencies.....	80

For pre-flight planning purposes only.

This information contained in this publication is not to be used
for flight operations.

AUTOMATED WEATHER OBSERVATION

Associated City	Ident	Freq	Phone #
Athens.....	MMI.....	125.425.....	423-745-3422
Bolivar.....	M08.....	121.125.....	731-658-6436
Cleveland.....	RZR.....	120.475.....	423-479-6823
Collegedale.....	FGU.....	122.70.....	423-236-4028
Columbia—Mt. Pleasant.....	MRC.....	128.625.....	931-379-0844
Covington.....	M04.....	118.575.....	901-476-1705
Crossville.....	CSV.....	120.625.....	931-456-4406
Dayton.....	2A0.....	135.075.....	423-775-4695
Dickson.....	M02.....	123.875.....	615-446-5481
Dyersburg.....	DYR.....	135.625.....	731-287-0300
Elizabethton.....	0A9.....	135.675.....	423-543-1801
Fayetteville.....	FYM.....	135.275.....	931-433-5916
Gallatin.....	M33.....	132.725.....	615-230-8005
Greeneville.....	GCV.....	128.425.....	423-639-5081
Huntingdon.....	HZD.....	133.275.....	731-352-2854
Jacksboro.....	JAU.....	124.975.....	423-566-6474
Knoxville.....	DKX.....	125.375.....	865-579-6151
Lawrenceburg.....	2M2.....	120.175.....	931-766-1585
Lebanon.....	M54.....	118.325.....	615-444-5778
Lewisburg.....	LUG.....	135.775.....	931-270-1014
Lexington/Parsons.....	PVE.....	118.125.....	731-845-5738
Livingston.....	8A3.....	126.175.....	931-823-3329
Madisonville.....	MNV.....	118.475.....	423-442-6170
McMinnville.....	RNC.....	135.525.....	931-668-7056
Memphis.....	M01.....	122.70.....	901-354-9296
Millington.....	2M8.....	122.80.....	901-873-0903
Millington.....	NQA.....	118.925.....	901-873-3630
Morristown.....	MOR.....	126.725.....	423-587-5886
Mountain City.....	6A4.....	126.225.....	423-727-4365
Murfreesboro.....	MBT.....	133.975.....	615-849-2622
Nashville.....	JWN.....	127.075.....	615-350-6222
Oneida.....	SCX.....	135.025.....	423-569-6651
Paris.....	PHT.....	118.825.....	731-644-0451
Portland.....	1M5.....	118.175.....	615-325-4971
Pulaski.....	GZS.....	118.275.....	931-363-6760
Rockwood.....	RKW.....	118.775.....	865-354-9262
Savannah.....	SNH.....	133.925.....	731-925-6080
Selmer.....	SZY.....	118.425.....	731-645-8184
Sevierville.....	GKT.....	126.875.....	865-429-5401
Shelbyville.....	SYI.....	119.275.....	931-685-4723
Somerville.....	FYE.....	119.875.....	901-465-6367
Sparta.....	SRB.....	128.250.....	931-738-3111
Springfield.....	M91.....	120.675.....	615-384-8206
Tullahoma.....	THA.....	128.325.....	931-454-2052
Union City.....	UCY.....	135.325.....	731-885-9161
Winchester.....	BGF.....	121.675.....	931-967-8445

ASOS PHONE NUMBERS

Clarksville.....	CKV.....	931-431-3045	Memphis.....	MEM.....	901-332-3679
Chattanooga....	CHA.....	423-499-5973	Nashville.....	BNA.....	615-360-6133
Crossville.....	CSV.....	931-456-4406	Smyrna.....	MQY.....	615-223-7716
Jackson.....	MKL.....	731-424-0692	Tri-Cities.....	TRI.....	423-279-0363
Knoxville.....	TYS.....	865-981-4053			

FSS Discrete Frequencies/Transmit & Re-

Chattanooga Area.....	123.65	Crossville Area....	122.5	Dyersburg.....	122.45
Jackson Area.....	122.65	Knoxville Area....	122.3	Memphis Area...	123.65
Nashville Area.....	122.55	Tri-Cities Area....	122.2		

AIRPORT LOCATION IDENTIFIERS

ID	AIRPORT NAME	ASSOCIATED CITY	
MMI	McMinn County	Athens	1
92A	Chilhowee Glider port	Benton	2
M08	William L. Whitehurst Field	Bolivar	3
TRI	Tri-Cities Airport, TN/VA	Bristol/Johnson City/Kingsport	4
0M4	Benton County	Camden	5
GHM	Centerville Municipal	Centerville	6
CHA	Lovell Field	Chattanooga	7
1A0	Dallas Bay Skypark	Chattanooga	8
CKV	Outlaw Field	Clarksville	9
RZR	Cleveland Regional Jetport	Cleveland	10
M29	Hassell Field	Clifton	11
FGU	Collegedale Municipal	Collegedale	12
MRC	Maury County	Columbia	13
1A3	Martin Campbell Field	Copperhill	14
M04	Covington Municipal	Covington	15
CSV	Crossville Memorial/Whitson Field	Crossville	16
2A0	Mark Anton Airport	Dayton	17
M02	Dickson Municipal	Dickson	18
DYR	Dyersburg Municipal	Dyersburg	19
50M	Puckett Glider port	Eagleville	20
0A9	Elizabethton Municipal	Elizabethton	21
FYM	Fayetteville Municipal	Fayetteville	22
1A7	Jackson County	Gainesboro	23
M33	Sumner County Regional	Gallatin	24
GCY	Greeneville-Greene County Municipal	Greeneville	25
M31	Arnold Field	Halls	26
0M3	John A. Baker Field	Hohenwald	27
M53	Humboldt Municipal	Humboldt	28
HZD	Carroll County	Huntingdon	29
JAU	Campbell County	Jacksboro	30
MKL	McKellar-Sipes Regional	Jackson	31
2A1	Jamestown Municipal	Jamestown	32
APT	Marion County-Brown Field	Jasper	33
0A4	Johnson City	Johnson City	34
DKX	Downtown Island	Knoxville	35
TYS	McGhee Tyson	Knoxville	36
3M7	Lafayette Municipal	Lafayette	37
2M2	Lawrenceburg-Lawrence County	Lawrenceburg	38
M54	Lebanon Municipal	Lebanon	39
LUG	Ellington	Lewisburg	40
PVE	Beech River Regional	Lexington/Parson	41
M15	Perry County	Linden	42
8A3	Livingston Municipal	Livingston	43
MNV	Monroe County	Madisonville	44
M93	Houston County	McKinnon	45
RNC	Warren County Memorial	McMinnville	46
M01	General Dewitt Spain	Memphis	47
MEM	Memphis International	Memphis	48
2M8	Charles W. Baker Field	Millington	49
NQA	Millington Regional Jetport	Millington	50
MOR	Moore-Murrell Field	Morristown	51

AIRPORT LOCATION IDENTIFIERS

ID	AIRPORT NAME	ASSOCIATED CITY	
6A4	Johnson County	Mountain City	52
MBT	Murfreesboro Municipal	Murfreesboro	53
JWN	John C. Tune	Nashville	54
BNA	Nashville International	Nashville	55
SCX	Scott Municipal	Oneida	56
PHT	Henry County	Paris	57
1M5	Portland Municipal	Portland	58
GZS	Abernathy Field	Pulaski	59
RKW	Rockwood Municipal	Rockwood	60
RVN	Hawkins County	Rogersville	61
54M	Wolf River	Rossville	62
SNH	Savannah-Hardin County	Savannah	63
SZY	Robert Sibley	Selmer	64
GKT	Gatlinburg-Pigeon Forge	Sevierville	65
UOS	Franklin County	Sewanee	66
SYI	Bomar Field-Shelbyville Municipal	Shelbyville	67
OA3	Smithville Municipal	Smithville	68
MQY	Smyrna	Smyrna	69
FYE	Fayette County	Somerville	70
SRB	Upper Cumberland Regional	Sparta	71
M91	Springfield-Robertson County	Springfield	72
3A2	New Tazewell Municipal	Tazewell	73
0M2	Reelfoot Lake	Tiptonville	74
TGC	Gibson County	Trenton	75
THA	Tullahoma Regional/Northern Field	Tullahoma	76
UCY	Everett-Stewart	Union City	77
0M5	Humphreys County	Waverly	78
BGF	Winchester Municipal	Winchester	79

KEY AIRPORT INFORMATION

1 AIRPORT NAME/ IDENT.	A three character code assigned to airport
2 CITY	City Associated with Airport
3 AIRPORT ELEVATION	Elevation of highest point on runway
4 RUNWAY HEADING	Magnetic heading of runway(s)
5 RUNWAY SURFACE	Concrete, Asphalt, or Turf surface
6 RUNWAY LENGTH	Length of pavement/turf end-to-end *__Displaced threshold
7 RUNWAY WIDTH	Width of the runway surface
8 RUNWAY LIGHTS	HIRL - High Intensity, MIRL - Medium Intensity, LIRL - Low Intensity
9 VGI	Visual Glide Slope Indicators
10 REILS	Runway End Identifier Light System
11 APPROACH LIGHTS	Lights to aid landing aircraft
12 PATTERN	Standard - standard pattern. 15-RH - indicates runway 15 has a right hand pattern.
13 COMMUNICATIONS	CTAF - Common traffic advisory frequency. UNICOM - Advisory frequency TOWER - Control tower frequency GRND - Ground Frequency CL DEL - Clearance delivery frequency
14 RCO or GCO	ATC/FSS Ground Communication Frequency
15 AWOS/ASOS/ATIS	Automated Weather Observation System Automated Surface Observation System Automated Terminal Information System
16 NAVIGATION	TYPE - Navaid (NDB, VOR)
17 FBO/SERVICES	Entity providing services.
18 CONTACT	On site individual with facility information
19 ATTENDED	Hours services are available
20 FUEL	Type of fuel available at the airport
21 REPAIRS	Major and Minor repairs
22 STORAGE	Aircraft hangars, Tie downs, or T-hangars
23 ACCOMMODATIONS	Motel, hotel, restaurants, etc.
24 WIND INDICATOR	Cone (Windsock) or tetrahedron
25 AWOS/ASOS	Telephone number to call for local airport
26 FROM CITY	Direction and distance of airport from associated city.
27 COORDINATES	Latitude and Longitude of airport reference point.
28 TRANSPORTATION	Taxi, rental car, or courtesy car.

1
AIRPORT NAME—IDENT.

2
ASSOCIATED CITY - 1

3
ELEVATION - XXX'

RUNWAY	SURFACE	LENGTH	WIDTH	LIGHTS	VGI	REILS	APP LIGHTS	PAT- TERN
4	5	6	7	8	9	10	11	12

COMMUNICATIONS				AWOS	NAVIGATION				16
CTAF	UNICOM	GCO	ATIS	FREQ	TYPE	IDENT	FREQ	DIR/ DIST	

17 FBO Services:

18 Contact:

19 Attended:

20 Fuel:

21 Repairs:

22 Storage:

23 Wind Indicator:

24 AWOS:

25 From City:

26 Coordinates:

27 Transportation:

28 Remarks:

TELEPHONE NUMBERS FOR FLIGHT SERVICE

Contact Flight Service Stations (FSS) listed in this directory by using the toll free number 1-800-WX-BRIEF. In some locations, you may be able to contact FSS in your area by using a local telephone number.

IFR Clearance (TN) 1-888-766-8267

ENROUTE FLIGHT ADVISORY SERVICE (EFAS) FLIGHT WATCH

East Tennessee: Contact Macon FSS 122.0 MHz

West Tennessee: Contact Jackson FSS 122.0 MHz

FLIGHT STANDARDS DISTRICT OFFICES

Memphis 901-544-3820 Nashville 615-781-5430

NOTE: Effective runway gradients are shown for those runways with gradients equal to or greater than one percent. The effective gradient is computed by dividing the difference between the maximum and minimum elevations to the runway by the lengths of the runway.

MCMINN COUNTY-MMI

ATHENS – 1



ELEVATION - 874'

RUNWAY	SUR-FACE	LENGTH	WIDTH	LIGHTS	VGI	REILS	APP LIGHTS	PATTERN
02/20	ASPHALT	6,450'	100'	MIRL	P2L/P2L	Y/Y		STANDARD

COMMUNICATIONS				AWOS	NAVIGATION			
CTAF	UNICOM	GCO	ATC	FREQ	TYPE	IDENT	FREQ	DIR/DIST
122.8	122.8		123.9 TYS APP	125.425	VOR NDB BS	HCH MMI WLAR	117.6 242 1450	140 @ 30.8NM ON AIRPORT 141 @N nm

Delete NDB and BS? I
Determined this by ADIP "NAVAIDS".

FBO Services: Athens Air, LLC 423-745-4939
Contact: Kristy Gentry Cox
Attended: 8:30—17:00 M—Sat. and 12:30—17:00 Sun
Fuel: 100LL/Jet A
Repairs: Major
Storage: Hangar and Tie Down
Accommodations: Motels in town

Wind Indicator: Cone
AWOS: 423-745-3422
From City: 3 Miles SE
Coordinates: N35°23.95 W84°33.71
Transportation: Taxi, Rental & Courtesy Cars
Remarks: Rwy 02 Thres Displ 950'

CHILHOWEE GLIDERPORT-92A

BENTON - 2



ELEVATION - 770'

RUNWAY	SUR-	LENGTH	WIDTH	LIGHTS	VGI	REILS	APP	PATTERN
03/21	TURF	2,600'	200'	CONES		N/N		POWER PATTERN RT FOR 03 LEFT FOR 21

COMMUNICATIONS				AWOS	NAVIGATION			
CTAF	UNI-COM	GCO	ATC	FREQ	TYPE	IDENT	FREQ	DIR/DIST
122.9			125.1 CHA APP					

FBO Services: Chilhowee Soaring Assoc. 423-338-2000

Contact: Sarah Kelly Arnold 423-506-9015

Attended: Weekends

Fuel: None

Repairs: None

Storage: Tie Downs

Accommodations: In Town

Wind Indicator: Cone

AWOS:

From City: 5 Miles North

Coordinates: N35°13.59 W84°35.10

Transportation: Courtesy Car with prior arrangements

Remarks: Rwy 03, 21 Disp 200'

WILLIAM L. WHITEHURST FLD-M08

BOLIVAR - 3



ELEVATION - 499'

RUNWAY	SURFACE	LENGTH	WIDTH	LIGHTS	VGI	REILS	APP LIGHTS	PATTERN
01/19	ASPHALT	5,007'	75'	MIRL	PAPI/ PAPI	Y/Y		STANDARD

COMMUNICATIONS				AWOS	NAVIGATION			
CTAF	UNICOM	GCO	ATC	FREQ	TYPE	IDENT	FREQ	DIR/DIST
123.0	123.0		134.65 MEM CTR	121.125	VOR BS	MKL WBOL	112.0 1560	194 ⁰ @ 24.2 NM

FBO Services: P and A Aviation, Inc. 731-658-7556

Contact: Shelby Isham

Attended: 8:30—17:00

Fuel: 100LL, Jet A

Repairs: Major

Storage: Tie Downs, Hangar

Accommodations: Nearby

Wind Indicator: Cone

AWOS: 731-658-6436

From City: 4 Miles SW

Coordinates: N35°12.91 W89°02.60

Transportation: Courtesy Car

Remarks:

TRI-CITIES AIRPORT—TRI

BRISTOL/JOHNSON CITY/KINGSPORT—4



ELEVATION - 1519'

RUNWAY	SURFACE	LENGTH	WIDTH	LIGHTS	VGI	REILS	APP LIGHTS	PATTERN
05/23	ASPHALT	8,000'	150'	HIRL	5-PAPI		PAPI/ALSF 2	STANDARD
09/27	ASPHALT	4,442'	150'	MIRL	23-PAPI		& PAPI REIL & PAPI	STANDARD
					27-PAPI			

COMMUNICATIONS				AWOS	NAVIGATION			
CTAF	UNICOM	GCO	ATC	FREQ	TYPE	IDENT	FREQ	DIR/DIST
Tower 119.5		122.2	134.425	ATIS	VOR	HMV	114.6	284° @ 13.6 NM
Ground 121.7		RCO	125.5	118.25	NDB	BO	221	
			TRI		BS	WJCW	910	

FBO Services: Tri-City Aviation

Contact: Pam Phillips 423-325-6261

Attended: 24 hours

Fuel: 100LL, Jet A

Repairs: Major

Storage: Tie Downs, Hangar

Accommodations: Motel and Restaurant near airport

Wind Indicator: Lighted Cone

AWOS: ASOS 423-279-0363

From City: 14 Miles SW Bristol

Coordinates: N36°28.51 W82°24.45

Transportation: Courtesy Car , taxi, and rental cars

Remarks: Tower Operates 06:00—00:00

BENTON COUNTY—0M4

CAMDEN—5



ELEVATION - 468'

RUNWAY	SURFACE	LENGTH	WIDTH	LIGHTS	VGI	REILS	APP LIGHTS	PATTERN
04/22	ASPHALT	5,001'	75'	MIRL	PAPI	Y		STANDARD

COMMUNICATIONS				AWOS	NAVIGATION			
CTAF	UNICOM	GCO	ATC	FREQ	TYPE	IDENT	FREQ	DIR/DIST
122.8	122.8		125.85 MEM CTR		VOR	JKS	109.4	023° @ 7.2 NM

FBO Services: Benton County

Contact: Leonard Pierpoint 731-584-5343

Attended: Tue—Sat. 8:00—16:00. After hours call 731-213-8841

Fuel: 100LL, Jet A

Repairs: None

Storage: Tie Downs, Hangar

Accommodations: In town

Wind Indicator: Cone

AWOS:

From City: 3 miles S

Coordinates: N36°00.57 W88°07.48

Transportation: Courtesy Car

Remarks:

CENTERVILLE MUNICIPAL-KGHM

CENTERVILLE—6



ELEVATION - 768'

RUNWAY	SURFACE	LENGTH	WIDTH	LIGHTS	VGI	REILS	APP LIGHTS	PATTERN
2/20	ASPHALT	4,002'	75'	MIRL	PAPI	Y		STANDARD

COMMUNICATIONS				AWOS	NAVIGATION			
CTAF	UNICOM	GCO	ATC	FREQ	TYPE	IDENT	FREQ	DIR/DIST
122.8	122.8		125.85 MEM CTR		VOR	GHM	111.6	Adj. Airport

FBO Services: Town of Centerville
Contact: 931-729-3032
Attended: 7:30—16:30 M-F
Fuel: 100LL, Jet A Self Service 24/7
Repairs: None
Storage: Tie Downs, Hangar
Accommodations: In town

Wind Indicator: Cone
AWOS:
From City: 3 miles N
Coordinates: N35°50.25 W87°26.72
Transportation: Courtesy Car
Remarks: After Hours 615-418-2164, RWY 20 Displ 250'

LOVELL FIELD—CHA

CHATTANOOGA -7



ELEVATION - 682'

RUNWAY	SURFACE	LENGTH	WIDTH	LIGHTS	VGI	REILS	APP LIGHTS	PATTERN
02/20	ASPHALT	7,400'	150'	HIRL	PAPI	N	MALSR/ ALSF2	STANDARD
15/33	ASPHALT	5,575'	150'	MIRL	PAPI	N		STANDARD

COMMUNICATIONS				AWOS	NAVIGATION			
CTAF	UNICOM	GCO	ATC	FREQ	TYPE	IDENT	FREQ	DIR/DIST
Tower 118.3 Ground 121.7 Cl Del 120.95	122.95		132.05	ATIS 119.85	VOR	GQO	115.8	330° @ 4.9 NM

FBO Services: Wilson Air
Contact: 423-855-2299
Attended: 24 hours
Fuel: 100LL, Jet A
Repairs: Major
Storage: Tie Downs, Hangar
Accommodations: Nearby

Wind Indicator: Cone
AWOS: 423-499-5973 ASOS
From City: 5 miles E
Coordinates: N35°02.11 W85°12.21
Transportation: Courtesy Car, limo, rental, and taxi
Remarks: Tower operates from 06:00—23:50. Use CTAF 118.3 when tower is closed.

DALLAS BAY SKYPARK—1A0

CHATTANOOGA —8



ELEVATION - 690'

RUNWAY	SUR-FACE	LENGT H	WIDTH	LIGHTS	VGI	REILS	APP LIGHTS	PATTERN
05/23	ASPHALT	3,025'	50'		VASI	N/N		23 RH

COMMUNICATIONS				AWOS	NAVIGATION			
CTAF	UNICOM	GCO	ATC	FREQ	TYPE	IDENT	FREQ	DIR/DIST
123.0	123.0		119.2 CHA APP		VOR NDB	GQO CQN	115.8 341	354° @ 13.6 NM

FBO Services: Dallas Bay Skypark

Contact: 423-842-9845

Attended: Sat. 09:00-18:00, Sun. 13:00-18:00

Fuel: 100LL

Repairs: None

Storage: Tie Downs, Hangar

Accommodations: Nearby

Wind Indicator: Tetrahedron, Cone

AWOS:

From City: 11 miles N

Coordinates: N35°11.25 W85°10.66

Transportation: taxi

Remarks: Within class C airspace. Rwy 23 Thres Displ 700'.

OUTLAW FLD—CKV

CLARKSVILLE -9



ELEVATION - 550'

RUNWAY	SURFACE	LENGTH	WIDTH	LIGHTS	VGI	REILS	APP	PATTERN
17/35	ASPHALT	6,000'	100'	MIRL	N/VASI	Y/Y	N/MALS	35-RH
05/23	ASPHALT	4,004'	100'	MIRL	N/N	N/N	N/N	05-RH

COMMUNICATIONS				AWOS	NAVIGATION			
CTAF	UNICOM	GCO	ATC	FREQ	TYPE	IDENT	FREQ	DIR/DIST
122.8	122.8	110.6T 122.1R	118.1 FT. CAMP APP	134.575 ASOS	VOR NDB	CKV CK	110.6 335	ON AIRPORT

FBO Services: Clarksville-Mont Co Reg Arpt Auth.

Contact: 931-431-2080

Attended: 07:00—18:00

Fuel: 100LL, Jet A

Repairs: Major

Storage: Tie Downs, Hangar

Accommodations: Nearby

Wind Indicator: Cone

AWOS: 931-431-3045 ASOS

From City: 6 miles NW

Coordinates: N36°37.31 W87°24.90

Transportation: taxi, rental & Courtesy Car

Remarks: Rwy 5 Displ 402', Rwy 23 Displ 503'

CLEVELAND REGIONAL JETPORT-RZR

CLEVELAND -10



ELEVATION - 860'

RUNWAY	SURFACE	LENGTH	WIDTH	LIGHTS	VGI	REILS	APP	PATTERN
03/21	CONCRETE	6,200'	100'	MIRL	PAPI/ PAPI	Y/Y		STANDARD

COMMUNICATIONS				AWOS	NAVIGATION				
CTAF	UNICOM	GCO	ATC	FREQ	TYPE	IDENT	FREQ	DIR/DIST	
122.7	122.7		125.1	120.475	VOR	GQO	115.8	048° @ 23NM	

FBO Services: Crystal Air, 423-472-4343

Contact: Mark Fidler, 423-472-4372

Attended: 08:00-17:00

Fuel: 100LL, Jet A 24/7

Repairs: Major

Storage: Tie Downs, Hangar

Accommodations: Nearby

Wind Indicator: Cone

AWOS: 423-479-6823

From City: 2 miles E

Coordinates: N35°12.69 W84°47.99

Transportation: taxi, rental & Courtesy Car

Remarks:

HASSELL FLD-M29

CLIFTON -11



ELEVATION - 401'

RUNWAY	SUR-FACE	LENGT H	WIDTH	LIGHTS	VGI	REILS	APP LIGHTS	PATTERN
02/20	AS-PHALT	4,200'	75'					STANDARD

COMMUNICATIONS				AWOS	NAVIGATION			
CTAF	UNI-COM	GCO	ATC	FREQ	TYPE	IDENT	FREQ	DIR/DIST
122.9	122.9		125.85 MEM CTR		VOR	JKS	109.4	122° @ 23.1 nm

FBO Services: None
Contact: 931-676-3370
Attended: Unattended
Fuel: None
Repairs: None
Storage: Tie Downs
Accommodations: Nearby

Wind Indicator: Cone
AWOS:
From City: 1 miles E
Coordinates: N35°23.10 W87°58.05
Transportation: None
Remarks: Rwy 20 Displ 700'

COLLEGEDALE MUNICIPAL-FGU

COLLEGEDALE-12



ELEVATION - 860'

RUNWAY	SURFACE	LENGTH	WIDTH	LIGHTS	VGI	REILS	APP LIGHTS	PATTERN
03/21	ASPHALT	4,986'	75'	MIRL	VASI/ VASI	N/N		STANDARD

COMMUNICATIONS				AWOS	NAVIGATION			
CTAF	UNICOM	GCO	ATC	FREQ	TYPE	IDENT	FREQ	DIR/DIST
122.7	122.7		132.05	122.7	VOR	GQD	115.8	052° @ 8.1 nm
			ATL CTR	AWOS-AV				

FBO Services: City of Collegedale 423-396-3135

Contact: Chris Swain 423-236-5008

Attended: 08:30—17:30

Fuel: 100LL, Jet A

Repairs: Major

Storage: Tie Downs, Hangar

Accommodations: 6 miles from airport

Wind Indicator: Cone

AWOS: 423-236-4028, 3 clicks for AWOS

From City: 2 miles SE

Coordinates: N35°02.59 W85°01.31

Transportation: Courtesy Car

Remarks: Within Chattanooga class C air-space. RWY 03 Displ 400', 3 clicks on CTAF to activate AWOS

MAURY COUNTY-MRC

COLUMBIA-MT. PLEASANT-13



ELEVATION - 681'

RUNWAY	SURFACE	LENGTH	WIDTH	LIGHTS	VGI	REILS	APP LIGHTS	PATTERN
06/24	ASPHALT	6,003'	100'	MIRL	PAPI/ PAPI	Y/Y	N/ODALS	STANDARD
17/35	TURF	1,811'	100'	NONE	NONE	N/N		STANDARD

COMMUNICATIONS				AWOS	NAVIGATION				
CTAF	UNICOM	GCO	ATC	FREQ	TYPE	IDENT	FREQ	DIR/DIST	
122.8	122.8		125.85 MEM CTR	128.625	VOR	GHM	111.6	138° @ 21.4 nm	

FBO Services: Maury County Airport Authority

Contact: Paul Turner 931-379-5511

Attended: 07:00 to sundown

Fuel: 100LL, Jet A 24/7

Repairs: Major

Storage: Tie Downs, Hangar

Accommodations: Motels and Restaurants in Columbia and Mt. Pleasant

Wind Indicator: Cone, Tetrahedron

AWOS: 931-379-0844

From City: 2 miles NE

Coordinates: N35°33.26 W87°10.75

Transportation: Courtesy Car, Taxi, Rental

Remarks: ODALS Rwy 24 key mic 5 times to activate

MARTIN CAMPBELL FLD—1A3

COPPERHILL-14



ELEVATION - 1789'

RUNWAY	SURFACE	LENGTH	WIDTH	LIGHTS	VGI	REILS	APP LIGHTS	PATTERN
02/20	ASPHALT	3,500'	75'		VASI/VASI			Right Traffic Rwy 20

COMMUNICATIONS				AWOS	NAVIGATION				
CTAF	UNICOM	GCO	ATC	FREQ	TYPE	IDENT	FREQ	DIR/DIST	
122.9	122.9		133.1 ATL CTR		VOR	HRS	109.8	282° @ 21.7 nm	

FBO Services: Whitewater Aviation
Contact: Hans Van Ovost 423-496-9465
Attended: Irregular
Fuel: 100LL, 24/7
Repairs: None
Storage: Tie Downs, Hangar
Accommodations: In town

Wind Indicator: Cone
AWOS:
From City: 3 miles NE
Coordinates: N35°00.95 W84°20.81
Transportation: Courtesy Car
Remarks: High Terrain all quadrants

COVINGTON MUNICIPAL-M04

COVINGTON-15



ELEVATION - 280'

RUNWAY	SURFACE	LENGTH	WIDTH	LIGHTS	VGI	REILS	APP	PATTERN
01/19	ASPHALT	5,004'	100'	MIRL	PAPI/	Y/Y		STANDARD

COMMUNICATIONS				AWOS	NAVIGATION			
CTAF	UNICOM	GCO	ATC	FREQ	TYPE	IDENT	FREQ	DIR/DIST
123.0	123.0		124.15 MEM DEP		VOR	DYR	116.8	204° @ 29.2 nm

FBO Services: City of Covington
Contact: Robin Anderson 901-476-1392
Attended: Mon-Fri 07:00-17:00, Sat & Sun 08:00-17:00
Fuel: 100LL, Jet A 24/7
Repairs: None
Storage: Tie Downs, Hangar
Accommodations: In town

Wind Indicator: Cone
AWOS: 901-476-1705
From City: 3 miles NE
Coordinates: N35°35.00 W89°35.23
Transportation: Courtesy Car, taxi
Remarks:

CROSSVILLE MEMORIAL-CSV**CROSSVILLE-16****ELEVATION - 1881'**

RUNWAY	SURFACE	LENGTH	WIDTH	LIGHTS	VGI	REILS	APP	PATTERN
08/26	ASPHALT	5,418'	100'	HIRL	VASI/PAPI	N/Y		STANDARD

COMMUNICATIONS				AWOS	NAVIGATION			
CTAF	UNICOM	GCO	ATC	FREQ	TYPE	IDENT	FREQ	DIR/DIST
122.7	122.7	122.5 122.2	133.6 ATL CTR	ASOS 120.625	VOR	HCH	117.6	335° @ 11.5 NM

FBO Services: Crossville Aero LLC 931-484-5016**Contact:** Chris Bennett 931-267-5214**Attended:** 8:00—Dark**Fuel:** 100LL, Jet A**Repairs:** Major**Storage:** Tie Downs, Hangar**Accommodations:** In town**Wind Indicator:** Cone**AWOS:** 931-456-4406 ASOS**From City:** 3 miles W**Coordinates:** N35°57.08 W85°05.10**Transportation:** Courtesy Car, taxi**Remarks:** Pilot controlled lighting

MARK ANTON—2A0

DAYTON-17



ELEVATION - 718'

RUNWAY	SURFACE	LENGTH	WIDTH	LIGHTS	VGI	REILS	APP	PATTERN
03/21	ASPHALT	5,001'	100'	MIRL	PAPI/	Y/Y		STANDARD

COMMUNICATIONS				AWOS	NAVIGATION			
CTAF	UNICOM	GCO	ATC	FREQ	TYPE	IDENT	FREQ	DIR/DIST
123.0	123.0		125.1 CHA APP	135.075	VOR NDB	HCH DTE	117.6 394	175° @ 17.8 nm On Airport

FBO Services: City of Dayton, 423-775-8407

Contact: Wanda Fulmer 423-775-8407

Attended: 8:30—17:30, Sunday 12:30-17:30

Fuel: 100LL, Jet A

Repairs: Major

Storage: Tie Downs, Hangar

Accommodations: In town

Wind Indicator: Cone

AWOS: 423-775-4695

From City: 4 miles E

Coordinates: N35°29.18 W84°55.87

Transportation: Courtesy Car

Remarks: 133.6 ATL CTR 23:50—06:00 local

DICKSON MUNICIPAL-M02**DICKSON-18****ELEVATION - 892'**

RUNWAY	SURFACE	LENGTH	WIDTH	LIGHTS	VGI	REILS	APP LIGHTS	PATTERN
17/35	ASPHALT	5,001'	75'	MIRL	PAPI/ PAPI	Y/Y		STANDARD

COMMUNICATIONS				AWOS	NAVIGATION			
CTAF	UNICOM	GCO	ATC	FREQ	TYPE	IDENT	FREQ	DIR/DIST
122.8	122.8		125.85 MEM CTR	123.875	VOR NDB	GHM DMZ	111.6 203	360° @ 17.6 nm On Airport

FBO Services: Liberty Aviation, 615-446-5962

Contact: Mike Gallagher, 615-446-6611

Attended: 8:00-18:00

Fuel: 100LL, Jet A

Repairs: Major

Storage: Tie Downs, Hangar

Accommodations: In town

Wind Indicator: Cone

AWOS: 615-446-5481

From City: 3 miles NW

Coordinates: N36°07.68 W87°25.79

Transportation: Courtesy Car

Remarks:

DYERSBURG MUNICIPAL-DYR

DYERSBURG-19



ELEVATION - 338'

RUNWAY	SURFACE	LENGTH	WIDTH	LIGHTS	VGI	REILS	APP	PATTERN
04/22	ASPHALT	*5,698'	100'	MIRL	PAPI/	Y/Y		STANDARD
16/34	ASPHALT	4,001'	75'	NONE	N/N	N/N		STANDARD

COMMUNICATIONS				AWOS	NAVIGATION			
CTAF	UNICOM	GCO	ATC	FREQ	TYPE	IDENT	FREQ	DIR/DIST
123.05	123.05	RCO 122.45 122.2	134.65 MEM CTR	135.625	VOR	DYR	116.8	251 ⁰ @ 4.5 nm

FBO Services: Dyersburg Regional Airport

Contact: Tommy Gibbons, 731-287-8181

Attended: NOV-MAR 08:00-17:00

APR-OCT m-f 07:00-19:00

Sat.—sun. 08:00-17:00

Fuel: 100LL, Jet A

Repairs: Major

Storage: Tie Downs, Hangar

Accommodations: In town

Wind Indicator: Cone

AWOS: 731-287-0300

From City: 2 miles S

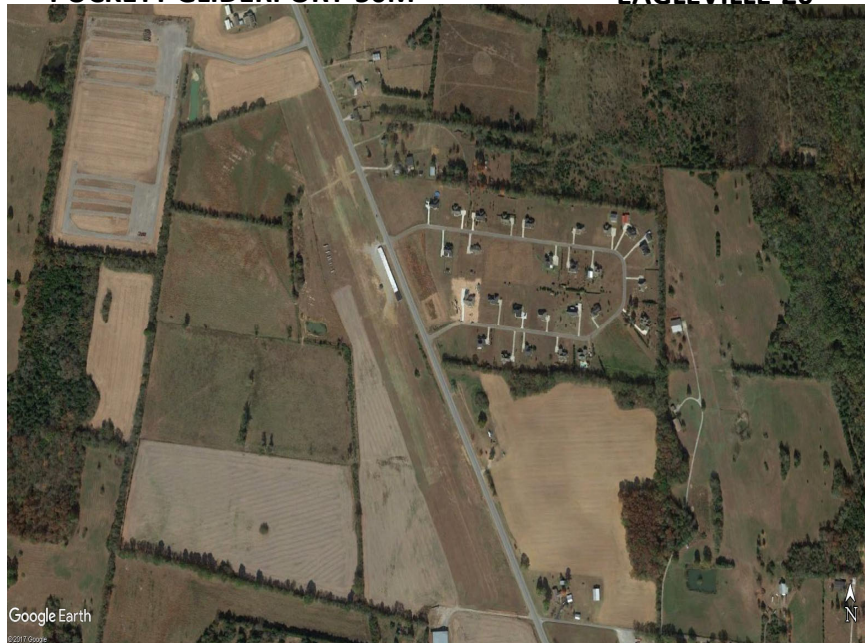
Coordinates: N35°59.88 W89°24.40

Transportation: Courtesy Car

Remarks: *rwy 22, Displ. 694'

PUCKETT GLIDERPORT-50M

EAGLEVILLE-20



ELEVATION - 780'

RUNWAY	SURFACE	LENGTH	WIDTH	LIGHTS	VGI	REILS	APP LIGHTS	PATTERN
14/32	TURF	*2,200	145'	CONE				STANDARD Right traffic for rwy 14

COMMUNICATIONS				AWOS	NAVIGATION			
CTAF	UNICOM	GCO	ATC	FREQ	TYPE	IDENT	FREQ	DIR/DIST
122.9					VOR	SYI	109.0	312° @ 12 nm

FBO Services: Eagleville Soaring Club,
800-306-6690
Contact: Benton Poore Jr., 615-274-2449
Attended: Weekends Only
Fuel: None
Repairs: None
Storage: None
Accommodations: In town

Wind Indicator: Cone
AWOS:
From City: 4 miles SE
Coordinates: N35°41.37 W86°36.90
Transportation: None
Remarks: Extensive Glider Activity,
Check local NOTAMS, Glide Tow 123.5,
*rwy 14 Displ 600'

ELIZABETHTON MUNICIPAL-0A9

ELIZABETHTON-21



ELEVATION - 1593'

RUNWAY	SURFACE	LENGTH	WIDTH	LIGHTS	VGI	REILS	APP LIGHTS	PATTERN
06/24	ASPHALT	*4,529'	70'	CONE	VASI/N	N/N		RWY 6 RH

COMMUNICATIONS				AWOS	NAVIGATION			
CTAF	UNICOM	GCO	ATC	FREQ	TYPE	IDENT	FREQ	DIR/DIST
123.0	123.0		125.25 TRI CITY APP	135.675	VOR	HMV	114.6	212° @ 45 nm

FBO Services: City of Elizabethton, 423-543-2801

Contact: Dan Cogan, 423-543-2801

Attended: 7:30—21:30, Winter hours 8:00-17:00

Fuel: 100LL, Jet A

Repairs: Major

Storage: Hangar, Tie Downs

Accommodations: In town

Wind Indicator: Cone, Tetrahedron

AWOS: 423-543-1801

From City: 3 miles NE

Coordinates: N36°22.27 W82°10.41

Transportation: Taxi, Rental Car

Remarks: High Terrain All Quadrants, Rwy 6 Displ 97'

FAYETTEVILLE MUNICIPAL-FYM

FAYETTEVILLE-22



Google Earth

ELEVATION - 984'

RUNWAY	SURFACE	LENGTH	WIDTH	LIGHTS	VGI	REILS	APP	PATTERN
02/20	ASPHALT	*5,900'	100'	MIRL	PAPI/	Y/ODALS		STANDARD

COMMUNICATIONS				AWOS	NAVIGATION			
CTAF	UNICOM	GCO	ATC	FREQ	TYPE	IDENT	FREQ	DIR/DIST
122.8	122.8	121.727	125.6 HSV APP	135.275	VOR	RQZ	112.2	010° @ 16.1 nm

FBO Services: Fayetteville Aviation, Inc.
Contact: Mark Cobb 931-433-1960
Attended: 8:00—17:00, Sunday 12:00-16:00
Fuel: 100LL, Jet A
Repairs: Major
Storage: Hangar, Tie Downs
Accommodations: In town

Wind Indicator: Cone
AWOS: 931-433-5916
From City: 6.5 Miles S
Coordinates: N35°03.58 W86°33.84
Transportation: Taxi, Rental Car
Remarks: MEM CTR 120.8 Midnight—
 06:00, Rwy 02 Displ 400'

JACKSON COUNTY—1A7

GAINESBORO-23



ELEVATION - 515'

RUNWAY	SURFACE	LENGTH	WIDTH	LIGHTS	VGI	REILS	APP	PATTERN
18/36	ASPHALT	3,500'	75'			N/N		STANDARD

COMMUNICATIONS				AWOS	NAVIGATION			
CTAF	UNICOM	GCO	ATC	FREQ	TYPE	IDENT	FREQ	DIR/DIST
122.9					VOR	LVT	108.4	246° @ 25.6 NM

FBO Services: None

Contact: Jim Young 931-397-6643

Attended: Unattended

Fuel: None

Repairs: None

Storage: None

Accommodations: In town

Wind Indicator: Cone

AWOS:

From City: 3 Miles NE

Coordinates: N36°23.81 W85°38.48

Transportation: None

Remarks: High terrain all quadrants

SUMNER COUNTY REGIONAL—M33

GALLATIN-24



ELEVATION - 583'

RUNWAY	SURFACE	LENGTH	WIDTH	LIGHTS	VGI	REILS	APP	PATTERN
17/35	ASPHALT	6,301'	100'	MIRL	PAPI/	Y/Y		STANDARD

COMMUNICATIONS				AWOS	NAVIGATION			
CTAF	UNICOM	GCO	ATC	FREQ	TYPE	IDENT	FREQ	DIR/DIST
123.05	123.05	130.075 GCO BNA CLNC	118.4 BNA APP	132.725	VOR	BNA	114.1	045° @ 19.6 NM

FBO Services: GPO Aviation 615-451-1490

Contact: 615-452-7248

Attended: 4/1—11/1, 07:00—19:00
11/2-3/31, 07:00—17:00

Fuel: 100LL/Jet A

Repairs: Minor

Storage: Hangar, Tie Down

Accommodations: In town

Wind Indicator: Cone

AWOS: 615-230-8005

From City: 2 Miles E

Coordinates: N36°22.61 W86°24.53

Transportation: Taxi, Rental Car & Courtesy Car

Remarks: Call in Advance for any special services.

GREENEVILLE-GREENE COUNTY MUNICIPAL-GCY

GREENEVILLE-25



ELEVATION - 1608'

RUNWAY	SURFACE	LENGTH	WIDTH	LIGHTS	VGI	REILS	APP	PATTERN
05/23	ASPHALT	6,001'	100'	MIRL	PAPI/	Y/Y		23 RH

COMMUNICATIONS				AWOS	NAVIGATION				
CTAF	UNICOM	GCO	ATC	FREQ	TYPE	IDENT	FREQ	DIR/DIST	
122.7	122.7		119.25 TRI APP	128.425	VOR NDB	SOT DYQ	108.8 263	030° @ 26.8 NM 051° @ 5 NM	

FBO Services: Greenville Aviation Services

Contact: Pam Smead 423-639-6275

Attended: 07:30—19:00

Fuel: 100LL/Jet A

Repairs: Major

Storage: Hangar, Tie Down

Accommodations: In town

Wind Indicator: Cone

AWOS: 423-639-5081

From City: 2 Miles N

Coordinates: N36°11.76 W82°48.66

Transportation: Taxi, Rental Car & Courtesy Car

Remarks:

ARNOLD FIELD-M31

HALLS-26



ELEVATION - 292'

RUNWAY	SURFACE	LENGTH	WIDTH	LIGHTS	VGI	REILS	APP	PATTERN
18/36	ASPHALT	4,700'	75'					18 RH

COMMUNICATIONS				AWOS	NAVIGATION			
CTAF	UNICOM	GCO	ATC	FREQ	TYPE	IDENT	FREQ	DIR/DIST
122.9	122.9				VOR	DYR	116.8	206° @ 7.9 NM

FBO Services: Town of Halls, 731-836-9653
Contact: Fred Taylor, 731-836-9673
Attended: Irregular
Fuel: 100LL 24/7
Repairs: None
Storage: Hangar, Tie Down
Accommodations: None

Wind Indicator: Cone
AWOS:
From City: 2 Miles NW
Coordinates: N35°54.20 W89°23.84
Transportation:
Remarks:

JOHN A. BAKER FIELD-0M3

HOHENWALD-27



ELEVATION - 972'

RUNWAY	SURFACE	LENGTH	WIDTH	LIGHTS	VGI	REILS	APP	PATTERN
02/20	ASPHALT	*4,001'	75'	MIRL	PAPI/	Y/Y		STANDARD

COMMUNICATIONS				AWOS	NAVIGATION			
CTAF	UNICOM	GCO	ATC	FREQ	TYPE	IDENT	FREQ	DIR/DIST
122.8	122.8		125.85 MEM CTR		VOR NDB	GHM JHG	111.6 257	199° @ 18.7 NM 019° @ 5.3 NM

FBO Services: None
Contact: Paul Bridges, 931-628-9270
Attended: Unattended

Fuel: 100LL
Repairs: None
Storage: Hangar, Tie Down
Accommodations: In Town

Wind Indicator: Cone
AWOS:
From City: 2 Miles W
Coordinates: N35°32.76 W87°35.84
Transportation: Courtesy Car
Remarks: *Rwy 20 Displ 500'

HUMBOLDT MUNICIPAL-M53**HUMBOLDT-28****ELEVATION - 421'**

RUNWAY	SURFACE	LENGTH	WIDTH	LIGHTS	VGI	REILS	APP	PATTERN
04/22	ASPHALT	4,003'	75'	MIRL	PAPI/	Y/Y		STANDARD

COMMUNICATIONS				AWOS	NAVIGATION			
CTAF	UNICOM	GCO	ATC	FREQ	TYPE	IDENT	FREQ	DIR/DIST
122.8	122.8		134.65 MEM CTR		VOR	MKL	112.0	006° @ 12.0 NM

FBO Services: City of Humboldt, 731-618-9089**Contact:** Fill Johnson, 731-618-9089**Attended:** 8:00—17:00**Fuel:** 100LL/Jet A**Repairs:** None**Storage:** Hangar, Tie Down**Accommodations:** In Town**Wind Indicator:** Cone**AWOS:****From City:** 3 Miles SE**Coordinates:** N35°48.13 W88°52.50**Transportation:** On Request**Remarks:** For service after hours
call 731-784-6859

CARROLL COUNTY-HZD

HUNTINGDON-29



ELEVATION - 497'

RUNWAY	SURFACE	LENGTH	WIDTH	LIGHTS	VGI	REILS	APP	PATTERN
01/19	ASPHALT	5,507'	100'	MIRL	PAPI/PAPI	Y/Y		STANDARD

COMMUNICATIONS				AWOS	NAVIGATION			
CTAF	UNICOM	GCO	ATC	FREQ	TYPE	IDENT	FREQ	DIR/DIST
122.8	122.8		134.65 MEM CTR	133.275	VOR NDB	JKS HZD	109.4 217	348° @ 29.8 NM On Airport

FBO Services: Swor Aviation
Contact: Tommy Swor, 731-352-7278
Attended: 8:00-17:00, Sunday 13:00-17:00
Fuel: 100LL/Jet A
Repairs: Major
Storage: Hangar, Tie Down
Accommodations: In Town

Wind Indicator: Cone
AWOS: 731-352-2854
From City: 4 Miles NW
Coordinates: N36°05.36 W88°27.80
Transportation: Taxi, Rental, and Courtesy Car
Remarks:

CAMPBELL COUNTY-JAU

JACKSBORO-30



ELEVATION - 1180'

RUNWAY	SURFACE	LENGTH	WIDTH	LIGHTS	VGI	REILS	APP	PATTERN
05/23	ASPHALT	*4,000	75'	MIRL	PAPI/PAPI	Y/Y		STANDARD

COMMUNICATIONS				AWOS	NAVIGATION			
CTAF	UNICOM	GCO	ATC	FREQ	TYPE	IDENT	FREQ	DIR/DIST
122.8	122.8		133.6 ATL CTR	124.975	VOR	VXV	116.4	336° @ 28.8 NM

FBO Services: Campbell County Aviation
Contact: Bert Loupe, 423-562-9966
Attended: 9:00-17:00 Mon—Fri. and 9:00—15:00 Sat.
Fuel: 100LL 24/7
Repairs: None
Storage: Hangar, Tie Down
Accommodations: In Town

Wind Indicator: Cone
AWOS: 423-566-6474
From City: 1 Miles E
Coordinates: N36°20.05 W84°09.78
Transportation: Taxi, and Courtesy Car
Remarks: *Rwy 22 has 1.2% Downhill Slope. Suggest Rwy 5 Right hand traffic at night.

MCKELLAR-SIPES REGIONAL-MKL

JACKSON-31



ELEVATION - 434'

RUNWAY	SURFACE	LENGTH	WIDTH	LIGHTS	VGI	REILS	APP	PATTERN
02/20	ASPHALT	6,006'	150'	HIRL	PAPI/PAPI	Y/Y	MALSR/N	STANDARD
11/29	ASPHALT	3,538'	100'	MIRL	PAPI/PAPI	N/N	N/N	STANDARD

COMMUNICATIONS				AWOS	NAVIGATION			
CTAF	UNICOM	GCO	ATC	FREQ	TYPE	IDENT	FREQ	DIR/DIST
127.15 TOWER 120.4 GRND	122.95		134.65 MEM CTR	119.325	VOR	MKL	112.0	On Airport

FBO Services: Madison County Airport Authority.

Contact: Steve Smith 731-423-0995

Attended: Mon-Fri 6:00-20:30, Sat 6:00-19:00, Sun 7:00-19:30

Fuel: 100LL and Jet A

Repairs: Major

Storage: Hangar, Tie Down

Accommodations: In Town

Wind Indicator: Cone

AWOS: 731-424-0692 ASOS

From City: 4 Miles W

Coordinates: N35°35.99 W88°54.94

Transportation: Rental and Courtesy Car

Remarks: After hours call 731-394-1755

JAMESTOWN MUNICIPAL-2A1

JAMESTOWN-32



Google Earth
©2017 Google

ELEVATION - 1694'

RUNWAY	SURFACE	LENGTH	WIDTH	LIGHTS	VGI	REILS	APP	PATTERN
18/36	ASPHALT	3,498'	75'	MIRL	PAPI/	Y/Y		STANDARD

COMMUNICATIONS				AWOS	NAVIGATION			
CTAF	UNICOM	GCO	ATC	FREQ	TYPE	IDENT	FREQ	DIR/DIST
122.8	122.8		124.625 IND CTR		VOR	LVT	108.4	145° @ 17.6 NM

FBO Services: City of Jamestown, 931-879-8948

Contact: Lonnie Hull, 931-879-8948

Attended: 8:00-16:00 M-Sat., 12:00-16:00 Sun.

Fuel: 100LL

Repairs: None

Storage: Hangar, Tie Down

Accommodations: In Town

Wind Indicator: Cone

AWOS:

From City: 5 Mile s

Coordinates: N36°20.98 W84°56.80

Transportation: Rental Car

Remarks: After Hours call 931-879-5685

MARION COUNTY—BROWN FIELD-APT

JASPER-33



ELEVATION - 641'

RUNWAY	SURFACE	LENGTH	WIDTH	LIGHTS	VGI	REILS	APP	PATTERN
04/22	ASPHALT	3,498'	75'	MIRL	PAPI/	Y/Y		22 RH

COMMUNICATIONS				AWOS	NAVIGATION			
CTAF	UNICOM	GCO	ATC	FREQ	TYPE	IDENT	FREQ	DIR/DIST
122.8	122.8		119.2 CHA APP		VOR NDB	GQO APT	115.8 382	285° @ 22.1 NM On Airport

FBO Services: Marion County, 423-942-5234

Contact: Beth Gudger, 423-942-5234

Attended: 8:00-17:00, 13:00-17:00 Sun.

Fuel: 100LL, Jet A, Auto 87 Octane

Repairs: None

Storage: Hangar, Tie Down

Accommodations: In Town

Wind Indicator: Cone

AWOS:

From City: 4 Mile SE

Coordinates: N35°03.64 W85°35.12

Transportation: Rental Car, Taxi

Remarks: 132.05 ATL CTR 23:50-06:00.

High terrain All quadrants, Parachute Jumping.

JOHNSON CITY-0A4

JOHNSON CITY-34



ELEVATION - 1550'

RUNWAY	SURFACE	LENGTH	WIDTH	LIGHTS	VGI	REILS	APP	PATTERN
04/22	ASPHALT	*3,000'	50'					STANDARD

COMMUNICATIONS				AWOS	NAVIGATION			
CTAF	UNICOM	GCO	ATC	FREQ	TYPE	IDENT	FREQ	DIR/DIST
122.9	122.9		134.42 TRI APP		VOR	HMV	114.6	247°@ 9.7 NM

FBO Services: None

Contact: 423-928-4500

Attended: Unattended

Fuel: None

Repairs: None

Storage: Tie Down

Accommodations: In Town

Wind Indicator: Cone

AWOS:

From City: 3 Mile NE

Coordinates: N36°21.82 W82°18.54

Transportation:

Remarks: *Rwy 04 Thres Displ 800'

DOWNTOWN ISLAND-DKX

KNOXVILLE-35



ELEVATION - 833'

RUNWAY	SURFACE	LENGTH	WIDTH	LIGHTS	VGI	REILS	APP	PATTERN
08/26	ASPHALT	3,499'	75'	MIRL	PAPI/	Y/Y		STANDARD

COMMUNICATIONS				AWOS	NAVIGATION			
CTAF	UNICOM	GCO	ATC	FREQ	TYPE	IDENT	FREQ	DIR/DIST
126.6	126.6	121.7 TYS CLNC	123.9 TYS APP	125.375	VOR	VXV	116.4	019°@ 3.7 NM

FBO Services: MKAA
Contact: Tim Hair, 865-577-4461
Attended: 07:00-23:00
Fuel: 100LL, Jet A
Repairs: Major
Storage: Tie Down, Hangar
Accommodations: In Town

Wind Indicator: Cone
AWOS: 865-579-6151
From City: 3 Mile E
Coordinates: N35°57.83 W83°52.42
Transportation: taxi, rental car, and courtesy car
Remarks: Pilot controlled lighting

MCGHEE TYSON—TYS

KNOXVILLE-36



Google Earth

ELEVATION - 981'

RUNWAY	SURFACE	LENGTH	WIDTH	LIGHTS	VGI	REILS	APP	PATTERN
05L/23R	CONCRETE	6,005'	150'	HIRL		N/N	MALSR1	23R RH
05R/23L	ASPHALT	*9,000'	150'	HIRL		Y/Y	ALSF2 REIL/REIL	05R RH

COMMUNICATIONS				AWOS	NAVIGATION				
CTAF	UNICOM	GCO	ATC	FREQ	TYPE	IDENT	FREQ	DIR/DIST	
121.2 Tower 121.9 Ground 121.65 Clnc Del	122.95	RCO 122.3		ATIS 128.35	VOR	VXV	116.4	224°@ 7.4 NM	

FBO Services: TAC AIR, INC.

Contact: 865-970-9000

Attended: 24 Hours

Fuel: 100LL, Jet A

Repairs: Major

Storage: Tie Down, Hangar

Accommodations: Hotel on Airport

Wind Indicator: Cone

AWOS: 865-981-4053 ASOS

From City: 10 Mile S

Coordinates: N35°48.66 W83°59.64

Transportation: taxi, rental car, and courtesy car

Remarks: *Rwy 23L Thres Displ 400'

LAFAYETTE MUNICIPAL—3M7

LAFAYETTE-37



ELEVATION - 969'

RUNWAY	SURFACE	LENGTH	WIDTH	LIGHTS	VGI	REILS	APP	PATTERN
01/19	ASPHALT	*5,200	75'	MIRL	PAPI/	Y/Y		STANDARD

COMMUNICATIONS				AWOS	NAVIGATION			
CTAF	UNICOM	GCO	ATC	FREQ	TYPE	IDENT	FREQ	DIR/DIST
122.8	122.8		118.4 BNA APP		VOR	BWG	117.9	141°@ 30.7 NM

FBO Services: Sky Chaser Aviation

Contact: 615-666-6542

Attended: Mon.—Fri. 8:30-15:00,
Sat. 8:30-12:00

Fuel: 100LL, Jet A

Repairs: Major

Storage: Tie Down, Hangar

Accommodations: In Town

Wind Indicator: Cone

AWOS:

From City: 2 Miles W

Coordinates: N36°31.20 W86°03.48

Transportation: taxi, rental car

Remarks: *Rwy 01 Displ 200'

LAWRENCEBURG-LAWRENCE COUNTY-2M2

LAWRENCEBURG-38



ELEVATION - 936'

RUNWAY	SURFACE	LENGTH	WIDTH	LIGHTS	VGI	REILS	APP	PATTERN
17/35	ASPHALT	5,003'	100'	MIRL	PAPI/	Y/Y		STANDARD

COMMUNICATIONS				AWOS	NAVIGATION			
CTAF	UNICOM	GCO	ATC	FREQ	TYPE	IDENT	FREQ	DIR/DIST
122.8	122.8		125.85 MEM CTR	120.175	VOR NDB	MSL LAT	116.5 269	019°@ 33.6 NM On Airport

FBO Services: Lawrenceburg, Lawrence County Airport

Contact: Doug Smith, 931-762-5133

Attended: 8:00-17:00

Fuel: 100LL, Jet A

Repairs: Minor

Storage: Tie Down, Hangar

Accommodations: In Town

Wind Indicator: Cone

AWOS: 931-766-1585

From City: 3 Miles NE

Coordinates: N36°14.06 W87°15.48

Transportation: taxi, rental car, courtesy car

Remarks: After hours call 931-231-4075

LEBANON MUNICIPAL—M54

LEBANON-39



ELEVATION - 588'

RUNWAY	SURFACE	LENGTH	WIDTH	LIGHTS	VGI	REILS	APP	PATTERN
01/19 04/22	ASPHALT TURF	*5,000' *1,801'	100' 150'	MIRL	PAPI/	Y/Y		STANDARD STANDARD

COMMUNICATIONS				AWOS	NAVIGATION			
CTAF	UNICOM	GCO	ATC	FREQ	TYPE	IDENT	FREQ	DIR/DIST
122.725	122.725	135.075	118.4 BNA APP	118.325	VOR NDB	BNA JUE	114.1 414	082°@ 18.2 NM On Airport

FBO Services: Direct Flight Solutions
Contact: Heather Bay, 615-444-0031
Attended: 7:00-19:00
Fuel: 100LL, Jet A
Repairs: Major
Storage: Tie Down, Hangar
Accommodations: In Town

Wind Indicator: Cone
AWOS: 615-444-5778
From City: 2 Miles SW
Coordinates: N36°11.42 W86°18.94
Transportation: taxi, rental car, courtesy car
Remarks: After hours call 615-210-4660,
 *Rwy 01 Displ 400', Rwy 22 Displ 600', Rwy

ELLINGTON-LUG**LEWISBURG-40****ELEVATION - 717'**

RUNWAY	SURFACE	LENGTH	WIDTH	LIGHTS	VGI	REILS	APP	PATTERN
02/20	ASPHALT	5,002'	75'	MIRL	VASI/	Y/Y		STANDARD

COMMUNICATIONS				AWOS	NAVIGATION			
CTAF	UNICOM	GCO	ATC	FREQ	TYPE	IDENT	FREQ	DIR/DIST
122.8	122.8		126.75 MEM CTR	135.775	VOR	SYI	109.0	261°@ 18.2 NM

FBO Services: Stewmon Aircraft
Contact: Kent Stewmon, 931-359-5003
Attended: 8:00-17:00 Mon-Fri, 8:00-15:00 Sat.
Fuel: 100LL, Jet A 24/7
Repairs: Major
Storage: Tie Down, Hangar
Accommodations: In Town

Wind Indicator: Cone
AWOS: 931-270-1014
From City: 3 Miles N
Coordinates: N35°30.42 W86°48.23
Transportation: taxi
Remarks:

BEECH RIVER REGIONAL-PVE LEXINGTON/PARSONS-41



Google Earth
©2017 Google

ELEVATION - 488'

RUNWAY	SURFACE	LENGTH	WIDTH	LIGHTS	VGI	REILS	APP	PATTERN
01/19	CONCRETE	6,000'	100'	MIRL	PAPI/	Y/Y		STANDARD

COMMUNICATIONS				AWOS	NAVIGATION			
CTAF	UNICOM	GCO	ATC	FREQ	TYPE	IDENT	FREQ	DIR/DIST
123.0	123.0		125.85 MEM CTR	118.125	VOR	JKS	109.4	065°@ 8.7 NM

FBO Services: Beech River Airport Auth.
Contact: John Jeter 731-845-5740
Attended: 8:00-17:00, Except Holidays
Fuel: 100LL, Jet A
Repairs: Minor
Storage: Tie Down, Hangar
Accommodations: In Town

Wind Indicator: Cone
AWOS: 731-845-5738
From City: 5 Miles NW
Coordinates: N35°39.38 W88°11.72
Transportation: taxi, rental, and courtesy cars
Remarks:

PERRY COUNTY-M15

LINDEN-42



ELEVATION - 740'

RUNWAY	SURFACE	LENGTH	WIDTH	LIGHTS	VGI	REILS	APP	PATTERN
18/36	ASPHALT	3,600'	75'	LIRL	PAPI/	Y/Y		STANDARD

COMMUNICATIONS				AWOS	NAVIGATION			
CTAF	UNICOM	GCO	ATC	FREQ	TYPE	IDENT	FREQ	DIR/DIST
122.9	122.9				VOR	JKS	109.4	088° @ 23.6 NM

FBO Services:

Contact: Charles Cassidy, 931-589-2216

Attended: Unattended

Fuel: None

Repairs: None

Storage: Tie Down, Hangar

Accommodations: In Town

Wind Indicator: Cone

AWOS:

From City: 3 Miles SW

Coordinates: N35°35.75
W87°52.60

Transportation: Upon request

Remarks: Call ahead for transportation

LIVINGSTON MUNICIPAL-8A3

LIVINGSTON-43



Google Earth

ELEVATION - 1372'

RUNWAY	SURFACE	LENGTH	WIDTH	LIGHTS	VGI	REILS	APP	PATTERN
03/21	ASPHALT	*5,152'	75'	MIRL	PAPI/	Y/Y		STANDARD

COMMUNICATIONS				AWOS	NAVIGATION			
CTAF	UNICOM	GCO	ATC	FREQ	TYPE	IDENT	FREQ	DIR/DIST
122.8	122.8	122.1T 108.4R	124.625 IND CTR	126.175	VOR	LVT	108.4	216°@ 12.4 NM

FBO Services: Livingston Municipal Airport
Contact: Edna Winningham 931-823-3671
Attended: 8:00-17:00 M-F, 8:00-14:00 Sat.
Fuel: 100LL, Jet A+
Repairs: None
Storage: Tie Down, Hangar
Accommodations: In Town

Wind Indicator: Cone
AWOS: 931-823-3329
From City: 2 Miles NE
Coordinates: N36°24.81 W85°18.63
Transportation: Taxi
Remarks: Rwy 03 Thres Displ 145'

MONROE COUNTY-MNV

MADISONVILLE-44



Google Earth
©2017 Google

ELEVATION - 1031'

RUNWAY	SURFACE	LENGTH	WIDTH	LIGHTS	VGI	REILS	APP	PATTERN
05/23	ASPHALT	*3,643'	75'	MIRL	PAPI/	Y/Y		STANDARD

COMMUNICATIONS				AWOS	NAVIGATION			
CTAF	UNICOM	GCO	ATC	FREQ	TYPE	IDENT	FREQ	DIR/DIST
123.0	123.0		123.9 TYS APP	118.475	VOR	HCH	117.6	118° @ 32.5 NM

FBO Services: Monroe County

Contact: Tom McCosh 423-420-0563

Attended: 09:00-17:00

Fuel: 100LL, Jet A 24/7

Repairs: Major

Storage: Tie Down, Hangar

Accommodations: In Town

Wind Indicator: Cone

AWOS: 423-442-6170

From City: 2 Miles NW

Coordinates: N35°32.71 W84°22.82

Transportation: Rental Car

Remarks: Rwy 23 Thres Displ 140'

HOUSTON COUNTY-M93

MCKINNON-45



Google Earth
©2017 Google

ELEVATION - 370'

RUNWAY	SURFACE	LENGTH	WIDTH	LIGHTS	VGI	REILS	APP	PATTERN
08/26	ASPHALT	3,000'	75'		N/N	N/N		STANDARD

COMMUNICATIONS				AWOS	NAVIGATION			
CTAF	UNICOM	GCO	ATC	FREQ	TYPE	IDENT	FREQ	DIR/DIST
122.9	122.9				VOR	CKV	110.6	234° @ 30.5 NM

FBO Services: Houston County
Contact: George Clark 931-289-3633
Attended: On Call
Fuel: None
Repairs: None
Storage: Tie Down
Accommodations: In Town

Wind Indicator: Cone
AWOS:
From City:
Coordinates: N36°19.00 W87°55.00
Transportation: None
Remarks:

WARREN COUNTY—RNC

MCMINNVILLE-46



ELEVATION - 1032'

RUNWAY	SURFACE	LENGTH	WIDTH	LIGHTS	VGI	REILS	APP	PATTERN
05/23	ASPHALT	*5,000'	100'	MIRL	PAPI/	Y/Y		STANDARD

COMMUNICATIONS				AWOS	NAVIGATION			
CTAF	UNICOM	GCO	ATC	FREQ	TYPE	IDENT	FREQ	DIR/DIST
122.8	122.8		126.75 MEM CTR	135.525	VOR	SYI	109.0	075°@ 30.2 NM

FBO Services: Warren County
Contact: Richard Crawford 931-668-7050
Attended: 8:00—18:00
Fuel: 100LL and Jet A
Repairs: Major
Storage: Tie Down, Hangar
Accommodations: In Town

Wind Indicator: Cone
AWOS: 931-668-7056
From City: 3 Miles W
Coordinates: N35°41.92 W85°50.63
Transportation: Rental and Courtesy
Remarks: *Rwy 23 Thres Displ 290'

GENERAL DEWITT SPAIN-M01

MEMPHIS-47



ELEVATION - 225'

RUNWAY	SURFACE	LENGTH	WIDTH	LIGHTS	VGI	REILS	APP	PATTERN
17/35	ASPHALT	3,800'	75'	MIRL	PAPI/	Y/Y		17 RH

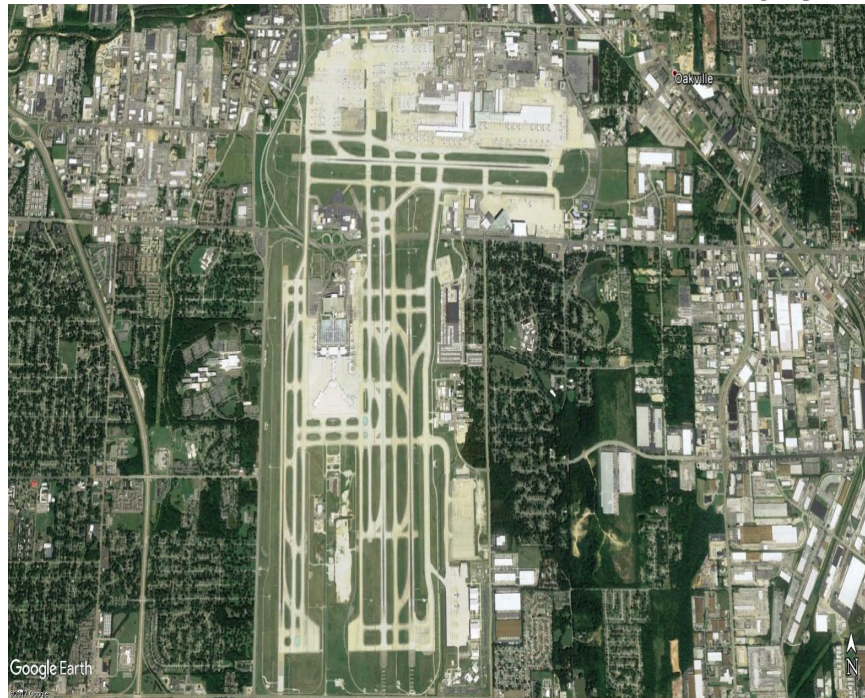
COMMUNICATIONS				AWOS	NAVIGATION			
CTAF	UNICOM	GCO	ATC	FREQ	TYPE	IDENT	FREQ	DIR/DIST
122.7	122.7		119.1 A 124.65 D MEM	122.7 AWOS-	VOR	MEM	117.5	342°@ 11.6 NM

FBO Services: Mem-Shelby Co. Arprt Auth.
Contact: Walter Cathey 901-358-0028
Attended: 7:00-17:30 Mon.-Fri. 8:00-16:30 Sat. and Sun.
Fuel: 100 LL, Jet A
Repairs: Major
Storage: Tie Down, Hangar
Accommodations: In Town

Wind Indicator: Cone
AWOS: 901-354-9296
From City: 6 Miles NW
Coordinates: N35°12.04 W90°03.24
Transportation: Rental car, and courtesy car
Remarks: Within Memphis Class B Air-space. *Activate AWOS by clicking 3 times on 122.7

MEMPHIS INTERNATIONAL-MEM

MEMPHIS-48



ELEVATION - 341'

RUNWAY	SURFACE	LENGTH	WIDTH	LIGHTS	VGI	REILS	APP	PATTERN
09/27	CONCRETE	8,946'	150'	HIRL	PAPI		MALSR/	STANDARD
18L/36R	CONCRETE	9,000'	150'	HIRL	PAPI		MALSR/	STANDARD
18R/36L	CONCRETE	9,320'	150'	HIRL	PAPI		MALSR/	18R RH
18C/36C	CONCRETE	11,120'	150'	HIRL	PAPI		MALSR/	36C RH

COMMUNICATIONS				AWOS	NAVIGATION			
CTAF	UNICOM	GCO	ATC	FREQ	TYPE	IDENT	FREQ	DIR/DIST
TOWER 121.0	122.95		119.1	ATIS	VOR	MEM	117.5	010°@ 1.7 NM
GRND			125.8	127.75				
CL DEL 125.2								

FBO Services: Signature, 901-345-4700 ARINC 129.87, Wilson Air Center 901-345-2992 ARINC 129.275

Contact: Scott Brockman 901-922-8077

Attended: 24 Hours

Fuel: 100 LL, Jet A

Repairs: Major

Storage: Tie Down, Hangar

Accommodations: Near Airport

Wind Indicator: Cone

AWOS: 901-332-3679 ASOS

From City: 3 Miles S

Coordinates: N35°02.55 W89°58.60

Transportation: Rental car, and courtesy car, Taxi

Remarks:

CHARLES W. BAKER FLD—2M8

MILLINGTON-49



ELEVATION - 247'

RUNWAY	SURFACE	LENGTH	WIDTH	LIGHTS	VGI	REILS	APP	PATTERN
18/36	ASPHALT	3,499'	75'	MIRL	PAPI	Y/Y		36 RH
*18/36U	ASPHALT	1,600'	75'	NONE		N/N		

COMMUNICATIONS				AWOS	NAVIGATION				
CTAF	UNICOM	GCO	ATC	FREQ	TYPE	IDENT	FREQ	DIR/DIST	
122.8	122.8		125.8A	122.8	VOR	MEM	117.5	008°@ 16 NM	
			124.15D MEM	AWOS-					

FBO Services: Mem—Shelby Co. Arprt. Auth.

Contact: Walter Cathey 901-358-0028

Attended: 5:00-15:30 Mon.-Fri. 8:00-16:30 Sat.-Sun.

Fuel: 100 LL, Jet A

Repairs: Major

Storage: Tie Down, Hangar

Accommodations: In Town

Wind Indicator: Cone

AWOS: 901-873-0903

From City: 4 Miles SW

Coordinates: N35°16.74 W89°55.89

Transportation: Rental car, Taxi

Remarks: *Make prior arrangements for ultra-light only runway. **Within Memphis class B airspace. Three clicks on 122.8 to activate AWOS.

MILLINGTON REGIONAL JETPORT-NQA MILLINGTON-50



ELEVATION - 319'

RUNWAY	SURFACE	LENGTH	WIDTH	LIGHTS	VGI	REILS	APP	PATTERN
04/22	CON/ ASPHALT	8,000'	200'	HIRL	PAPI/ PAPI	N/Y	P/MALSR	22 RH

COMMUNICATIONS				AWOS	NAVIGATION			
CTAF	UNICOM	GCO	ATC	FREQ	TYPE	IDENT	FREQ	DIR/DIST
TOWER 120.25 GRND. 121.375	122.95		124.15 MEM APP	118.925	VOR	MEM	117.5	014°@ 21.2 NM

FBO Services: CTI 901-873-4359, Tul-sair Beechcraft 901-873-4780
Contact: Roy Remington 901-872-7495
Attended: 5:00-2:00AM Mon.-Fri. 7:00-19:00 Sat. and Sun.
Fuel: 100 LL, Jet A
Repairs: Major
Storage: Tie Down, Hangar
Accommodations: In Town

Wind Indicator: Cone
AWOS: 901-873-3630
From City: 1 Mile NE
Coordinates: N35°21.40 W89°52.23
Transportation: Rental car
Remarks: Within Mem Class B Airspace, Check chart supplement for tower hours of operation.

MOORE-MURRELL FLD-MOR

MORRISTOWN-51



Google Earth

ELEVATION - 1313'

RUNWAY	SURFACE	LENGTH	WIDTH	LIGHTS	VGI	REILS	APP	PATTERN
05/23	ASPHALT	5,717'	100'	MIRL	PAPI/PAPI	Y/Y	MALSF RWY 5	STANDARD

COMMUNICATIONS				AWOS	NAVIGATION				
CTAF	UNICOM	GCO	ATC	FREQ	TYPE	IDENT	FREQ	DIR/DIST	
122.8	122.8		132.8 TYS APP	126.725	VOR	SOT	108.8	330°@ 28.1 NM	

FBO Services: Morristown Air Service 423-586-2483

Contact: Ben Williamson 423-586-2483

Attended: 8:00—Dusk

Fuel: 100 LL, Jet A

Repairs: Major

Storage: Tie Down, Hangar

Accommodations: In Town

Wind Indicator: Cone

AWOS: 423-587-5886

From City: 4 Miles SW

Coordinates: N36°10.76 W83°22.53

Transportation: Rental car, Courtesy Car

Remarks: PAPI Rwy 05, Key mic 5 times to activate.

JOHNSON COUNTY-6A4

MOUNTAIN CITY-52



ELEVATION - 2240'

RUNWAY	SURFACE	LENGTH	WIDTH	LIGHTS	VGI	REILS	APP	PATTERN
06/24	ASPHALT	4,498'	75'	NSTD				06 RH

COMMUNICATIONS				AWOS	NAVIGATION			
CTAF	UNICOM	GCO	ATC	FREQ	TYPE	IDENT	FREQ	DIR/DIST
122.7	122.7		134.425 TRI APP	126.225	VOR	HMV	114.6	098° @ 14.8 NM

FBO Services: Doe Mountain Aviation Services

Contact: Dave Garris 423-727-1223

Attended: 9:00-18:00

Fuel: 100 LL, Jet A

Repairs: Minor

Storage: Tie Down, Hangar

Accommodations: In Town

Wind Indicator: Cone

AWOS: 423-727-4365

From City: 4 Miles S

Coordinates: N36°25.07 W81°49.51

Transportation: Rental car

Remarks: High Terrain All Quadrants

MURFREESBORO MUNICIPAL-MBT MURFREESBORO-53



ELEVATION - 614'

RUNWAY	SURFACE	LENGTH	WIDTH	LIGHTS	VGI	REILS	APP	PATTERN
18/36	ASPHALT	3,898'	100'	MIRL	VASI/	Y/Y		STANDARD

COMMUNICATIONS				AWOS	NAVIGATION				
CTAF	UNICOM	GCO	ATC	FREQ	TYPE	IDENT	FREQ	DIR/DIST	
123.075	123.075	135.075	118.4 BNA APP	133.975	VOR	SYI	109.0	010°@ 19.1 NM	

FBO Services: City of Murfreesboro

Contact: Chad Gehrke 615-848-3254

Attended: 7:30-18:30 Mon.—Sat., 9:00-18:30 Sun.

Fuel: 100 LL, Jet A

Repairs: Major

Storage: Tie Down, Hangar

Accommodations: In Town

Wind Indicator: Cone

AWOS: 615-849-2622

From City: 2 Miles N

Coordinates: N35°52.65 W86°22.65

Transportation: Rental car, Taxi

Remarks: Extensive student training operations.

JOHN C TUNE-JWN

NASHVILLE-54



ELEVATION - 495'

RUNWAY	SURFACE	LENGTH	WIDTH	LIGHTS	VGI	REILS	APP	PATTERN
02/20	ASPHALT	6,001'	100'	MIRL	PAPI/	Y/Y		20 RH

COMMUNICATIONS				AWOS	NAVIGATION			
CTAF	UNICOM	GCO	ATC	FREQ	TYPE	IDENT	FREQ	DIR/DIST
122.7	122.7	124.55 CLNC DEL	119.35 BNA APP	127.075	VOR	BNA	114.1	288°@ 10.2 NM

FBO Services: Contour 615-350-5000

Contact: Kathy Hatter 615-350-6551

Attended: 24/7

Fuel: 100 LL, Jet A

Repairs: Major

Storage: Tie Down, Hangar

Accommodations: 4 Miles

Wind Indicator: Cone

AWOS: 615-350-6222

From City: 1 Miles NW

Coordinates: N36°10.94 W86°53.20

Transportation: Rental car, Taxi, Courtesy car

Remarks:

NASHVILLE INTERNATIONAL-BNA

NASHVILLE-55



ELEVATION - 599'

RUNWAY	SURFACE	LENGTH	WIDTH	LIGHTS	VGI	REILS	APP	PATTERN
02L/20R	CONCRETE	7,703'	150'	HIRL			ALSF-2/	STANDARD
02C/20C	CONCRETE	8,001'	150'	HIRL			MALSR/	STANDARD
02R/20L	CONCRETE	8,000'	150'	HIRL			ALSF-2/	STANDARD
13/31	CONCRETE	*11,030'	150'	HIRL			VASI/REIL	STANDARD

COMMUNICATIONS				AWOS	NAVIGATION			
CTAF	UNICOM	GCO	ATC	FREQ	TYPE	IDENT	FREQ	DIR/DIST
TOWER 118.6	122.95		118.4	ATIS	VOR	BNA	114.1	On Airport
GRND 121.9			119.35	135.1				
CL DEL 126.05			APP					

FBO Services: Signature Flight Services, 615-361-3000 ARINC 131.1, Atlantic Aviation 615-360-8109 ARINC 131.6

Contact: Rob Wigington 615-275-1703

Attended: 24/7

Fuel: 100 LL, Jet A

Repairs: Major

Storage: Tie Down, Hangar

Accommodations: Nearby

Wind Indicator: Cone

AWOS: 615-360-6133 ASOS

From City: 6 Miles SE

Coordinates: N36°07.47 W86°40.69

Transportation: Rental car, Taxi, Courtesy car

Remarks: *Rwy 31 Thres Displ 741', Rwy 13

SCOTT MUNICIPAL-SCX

ONEIDA-56



Google Earth

ELEVATION - 1545'

RUNWAY	SURFACE	LENGTH	WIDTH	LIGHTS	VGI	REILS	APP	PATTERN
05/23	ASPHALT	5,506'	75'	MIRL	PAPI/	Y/Y	RWY 23 ODAL	STANDARD

COMMUNICATIONS				AWOS	NAVIGATION			
CTAF	UNICOM	GCO	ATC	FREQ	TYPE	IDENT	FREQ	DIR/DIST
122.8	122.8		124.625 IND CTR	135.025	VOR	LVT	108.4	107° @ 29.1 NM

FBO Services: Scott County Arpt. Auth.

Contact: Hank Duvall 423-569-8270

Attended: 8:00-18:00 Mon-Sat., 12:30-18:00 Sun.

Fuel: 100 LL, Jet A

Repairs: Major

Storage: Tie Down, Hangar

Accommodations: In Town

Wind Indicator: Cone

AWOS: 423-569-6651

From City: 4 Miles SW

Coordinates: N36°27.34 W84°35.15

Transportation: Rental car, Taxi, Courtesy car

Remarks:

HENRY COUNTY-PHT

PARIS-57



Google Earth
©2017 Google

ELEVATION - 580'

RUNWAY	SURFACE	LENGTH	WIDTH	LIGHTS	VGI	REILS	APP	PATTERN
02/20	ASPHALT	5,001'	100'	MIRL	PAPI/	Y/Y	ODALS/N	STANDARD

COMMUNICATIONS				AWOS	NAVIGATION			
CTAF	UNICOM	GCO	ATC	FREQ	TYPE	IDENT	FREQ	DIR/DIST
123.0	123.0		134.65 MEM CTR	118.825	VOR	JKS	109.4	356°@ 44.2 NM

FBO Services: Henry County
Contact: Don Davenport 731-644-7933
Attended: 8:00-16:30 Mon.-Sat.
Fuel: 100 LL, Jet A 24/7
Repairs: Major
Storage: Tie Down, Hangar
Accommodations: In Town

Wind Indicator: Cone
AWOS: 731-644-0451
From City: 3 Miles NW
Coordinates: N36°20.16 W88°23.07
Transportation: Rental car, Taxi, Courtesy car
Remarks: Crosswind runway is closed.
 To activate ODALS, key mic 3-low/5-med/7-high.

PORTLAND MUNICIPAL-1M5

PORTLAND-58



Google Earth

ELEVATION - 817'

RUNWAY	SURFACE	LENGTH	WIDTH	LIGHTS	VGI	REILS	APP	PATTERN
01/19	ASPHALT	5,000'	100'	MIRL	PAPI/	Y/Y		STANDARD

COMMUNICATIONS				AWOS	NAVIGATION			
CTAF	UNICOM	GCO	ATC	FREQ	TYPE	IDENT	FREQ	DIR/DIST
122.8	122.8	121.725	119.35 BNA APP	118.175	VOR	BWG	117.9	183°@ 20.2 NM

FBO Services: Portland Airport Authority
Contact: 731-323-7500
Attended: 8:00-16:00
Fuel: 100 LL, Jet A
Repairs: Major
Storage: Tie Down
Accommodations: In Town

Wind Indicator: Cone
AWOS: 615-325-4971
From City: 3 Miles NE
Coordinates: N36°35.57 W86°28.62
Transportation: None
Remarks:

ABERNATHY FLD-GZS

PULASKI-59



ELEVATION - 689'

RUNWAY	SURFACE	LENGTH	WIDTH	LIGHTS	VGI	REILS	APP	PATTERN
16/34	ASPHALT	*5,310'	75'	MIRL	PAPI/PAPI	Y/Y		STANDARD

COMMUNICATIONS				AWOS	NAVIGATION			
CTAF	UNICOM	GCO	ATC	FREQ	TYPE	IDENT	FREQ	DIR/DIST
122.8	122.8		125.85 MEM CTR	118.275	VOR	RQZ	112.2	314°@ 29.9 NM

FBO Services: City of Pulaski
Contact: Randy Jones 931-363-6827
Attended: 8:00-20:00, and 12:00-Dusk on Sunday
Fuel: 100 LL, Jet A
Repairs: Minor
Storage: Tie Down, Hangar
Accommodations: In Town

Wind Indicator: Cone
AWOS: 931-363-6760
From City: 3 Miles SW
Coordinates: N35°09.25 W87°03.42
Transportation: Taxi, Rental car
Remarks: *Rwy 34 Displ Thres. 300'

ROCKWOOD MUNICIPAL-RKW

ROCKWOOD-60



ELEVATION - 1664'

RUNWAY	SURFACE	LENGTH	WIDTH	LIGHTS	VGI	REILS	APP	PATTERN
04/22	ASPHALT	5,000'	100'	MIRL	PAPI/	Y/Y		STANDARD

COMMUNICATIONS				AWOS	NAVIGATION			
CTAF	UNICOM	GCO	ATC	FREQ	TYPE	IDENT	FREQ	DIR/DIST
122.8	122.8		133.6 ATL CTR	118.775	VOR	HCH	117.6	061°@ 16.4 NM

FBO Services: Rockwood Aviation LLC
Contact: Danny Collins 865-354-3023
Attended: 9:00-17:00 M-F, 9:00-15:00 Sat.
Fuel: 100 LL, Jet A
Repairs: Minor
Storage: Tie Down
Accommodations: In Town

Wind Indicator: Cone
AWOS: 865-354-9262
From City: 3 Miles N
Coordinates: N35°55.34 W84°41.39
Transportation: Taxi, Rental car, Courtesy Car
Remarks: Taxiing aircraft not visible from ends of runways.

HAWKINS COUNTY-RVN

ROGERSVILLE-61



ELEVATION - 1255'

RUNWAY	SURFACE	LENGTH	WIDTH	LIGHTS	VGI	REILS	APP	PATTERN
07/25	ASPHALT	3,500'	75'	MIRL	PAPI/	Y/Y		STANDARD

COMMUNICATIONS				AWOS	NAVIGATION			
CTAF	UNICOM	GCO	ATC	FREQ	TYPE	IDENT	FREQ	DIR/DIST
122.8	122.8		119.25 TRI APP		VOR	HMV	114.6	276° @ 36.6 NM

FBO Services: Finley Aviation
Contact: Mark Finley 423-345-0219
Attended: 8:00-17:00
Fuel: 100 LL
Repairs: Major
Storage: Tie Down, Hangar
Accommodations: In Town

Wind Indicator: Cone
AWOS:
From City: 6 Miles NE
Coordinates: N36°27.46 W82°53.10
Transportation: Rental car, Courtesy Car
Remarks: ATL Ctr 127.85 00:01-06:00.
 High terrain all quadrants.

WOLF RIVER-54M

ROSSVILLE-62



ELEVATION - 310'

RUNWAY	SURFACE	LENGTH	WIDTH	LIGHTS	VGI	REILS	APP	PATTERN
18/36	TURF	*3,100'	100'	CONE		Y/Y		18 RH

COMMUNICATIONS				AWOS	NAVIGATION			
CTAF	UNICOM	GCO	ATC	FREQ	TYPE	IDENT	FREQ	DIR/DIST
122.9	122.9				VOR	HLI	112.4	343°@ 17.5 NM

FBO Services: Wolf River

Contact: Mary Degan 901-493-8375

Attended: 8:00-17:00

Fuel: 100 LL

Repairs: None

Storage: Tie Down, Hangar

Accommodations: In Town

Wind Indicator: Cone

AWOS:

From City: 2 Miles W

Coordinates: N35°03.24 W89°34.80

Transportation:

Remarks: *Rwy 18 Displ Thres. 1000'

SAVANNAH-HARDIN COUNTY-SNH

SAVANNAH-63



ELEVATION - 473'

RUNWAY	SURFACE	LENGTH	WIDTH	LIGHTS	VGI	REILS	APP	PATTERN
01/19	CONCRETE	5,000'	100'	MIRL	PAPI/	Y/Y		STANDARD

COMMUNICATIONS				AWOS	NAVIGATION			
CTAF	UNICOM	GCO	ATC	FREQ	TYPE	IDENT	FREQ	DIR/DIST
122.8	122.8		124.35 MEM CTR	133.925	VOR	JKS	109.4	163° @ 26.6 NM

FBO Services: Savannah-Hardin Arprt. Comm.
Contact: Derick Seaton 731-925-6380
Attended: 8:00-18:00 Mon.-Sat., 10:00-18:00 Sun.
Fuel: 100 LL, Jet A
Repairs: Major
Storage: Tie Down, Hangar
Accommodations: In Town

Wind Indicator: Cone
AWOS: 731-925-6080
From City: 3 Miles SE
Coordinates: N35°10.22 W88°13.00
Transportation: Rental, Courtesy Car
Remarks: After hours call 731-925-8670

ROBERT SIBLEY-SZY

SELMER-64



ELEVATION - 610'

RUNWAY	SURFACE	LENGTH	WIDTH	LIGHTS	VGI	REILS	APP	PATTERN
17/35	ASPHALT	5,002'	75'	MIRL	PAPI/	Y/Y		STANDARD

COMMUNICATIONS				AWOS	NAVIGATION			
CTAF	UNICOM	GCO	ATC	FREQ	TYPE	IDENT	FREQ	DIR/DIST
122.7	122.7		124.35 MEM CTR	118.425	VOR	JKS	109.4	194°@ 24.7 NM

FBO Services: McNairy Co. Airport Auth.

Contact: Chris Tull 731-645-3014

Attended: 8:00-Dusk

Fuel: 100 LL, Jet A

Repairs: Major

Storage: Tie Down, Hangar

Accommodations: In Town

Wind Indicator: Cone

AWOS: 731-645-8184

From City: 5 Miles NE

Coordinates: N35°12.18 W88°29.90

Transportation: Rental, Courtesy Car

Remarks:

GATLINBURG-PIGEON FORGE-GKT

SEVIERVILLE-65



ELEVATION - 1014'

RUNWAY	SURFACE	LENGTH	WIDTH	LIGHTS	VGI	REILS	APP	PATTERN
10/28	ASPHALT	*5,506'	75'	MIRL	PAPI/PAPI	Y/Y		STANDARD

COMMUNICATIONS				AWOS	NAVIGATION			
CTAF	UNICOM	GCO	ATC	FREQ	TYPE	IDENT	FREQ	DIR/DIST
123.0	123.0		132.8 TYS APP	126.875	VOR	VXV	116.4	102°@ 18.1 NM

FBO Services: Gatlinburg Arpt. Auth.
Contact: Emily Haun 865-453-8393
Attended: 7:00-18:00
Fuel: 100 LL, Jet A
Repairs: Major
Storage: Tie Down, Hangar
Accommodations: In Town

Wind Indicator: Cone
AWOS: 865-429-5401
From City: 2 Miles SE
Coordinates: N35°51.47 W83°31.72
Transportation: Rental car, Taxi
Remarks: *Rwy 28 Displ Thres 340'

FRANKLIN COUNTY-UOS

SEWANEE-66



ELEVATION - 1953'

RUNWAY	SURFACE	LENGTH	WIDTH	LIGHTS	VGI	REILS	APP	PATTERN
06/24	ASPHALT	*3,700'	50'	MIRL	PAPI/			STANDARD

COMMUNICATIONS				AWOS	NAVIGATION			
CTAF	UNICOM	GCO	ATC	FREQ	TYPE	IDENT	FREQ	DIR/DIST
122.8	122.8				VOR	SYI	109.0	130°@ 34.1 NM

FBO Services: Elevation Inc.

Contact: Jon Foote 931-598-1910

Attended: 8:00-18:00 Mon.—Sat.

Fuel: 100 LL

Repairs: None

Storage: Tie Down, Hangar

Accommodations: In Town

Wind Indicator: Cone

AWOS:

From City: 1 Mile E

Coordinates: N35°12.31 W85°53.89

Transportation: Courtesy car

Remarks: *Rwy 24 Displ Thres 200'

BOMAR FLD-SHELBYVILLE MUNICIPAL-SYI

SHELBYVILLE-67



Google Earth

ELEVATION - 801'

RUNWAY	SURFACE	LENGTH	WIDTH	LIGHTS	VGI	REILS	APP	PATTERN
18/36	ASPHALT	5'503'	100'	MIRL	PAPI/	Y/Y		STANDARD

COMMUNICATIONS				AWOS	NAVIGATION			
CTAF	UNICOM	GCO	ATC	FREQ	TYPE	IDENT	FREQ	DIR/DIST
122.8	122.8	RCO 122.1R 109.0T	126.75 MEM CTR	119.275	VOR	SYI	109.0	ON AIRPORT

FBO Services: City of Shelbyville
Contact: Paul Perry 931-684-1669
Attended: 7:00-19:00
Fuel: 100 LL, Jet A
Repairs: Major
Storage: Tie Down, Hangar
Accommodations: In Town

Wind Indicator: Cone, Tetrahedron
AWOS: 931-685-4723
From City: 4 Miles N
Coordinates: N35⁰33.56 W86⁰26.55
Transportation: Courtesy car, Rental car, Taxi
Remarks: Pilot controlled intensity lights

SMITHVILLE MUNICIPAL-0A3

SMITHVILLE-68



ELEVATION - 1084'

RUNWAY	SURFACE	LENGTH	WIDTH	LIGHTS	VGI	REILS	APP	PATTERN
06/24	ASPHALT	*4,257'	75'	MIRL	PAPI/	Y/Y		STANDARD

COMMUNICATIONS				AWOS	NAVIGATION			
CTAF	UNICOM	GCO	ATC	FREQ	TYPE	IDENT	FREQ	DIR/DIST
122.8	122.8		132.9 MEM CTR		VOR	HCH	117.6	289° @ 42.3 NM

FBO Services: City of Smithville

Contact: Joe Johnson 615-597-4940

Attended: 8:00-17:00 Tues-Sat.,
Unattended Sun.-Mon.

Fuel: 100 LL, Jet A

Repairs: Major

Storage: Tie Down, Hangar

Accommodations: In Town

Wind Indicator: Cone

AWOS:

From City: 3 Miles NE

Coordinates: N35°59.13 W85°48.55

Transportation: Courtesy car, Rental car

Remarks: *Rwy 06 Displ Thres. 151'

SMYRNA-MQY

SMYRNA-69



ELEVATION - 543'

RUNWAY	SURFACE	LENGTH	WIDTH	LIGHTS	VGI	REILS	APP	PATTERN
14/32	ASPHALT	8,048'	150'	MIRL	PAPI/	Y/Y	N/MALSR	STANDARD
01/19	ASPHALT	5,546'	100'	MIRL	PAPI/	Y/Y	N/N	STANDARD

COMMUNICATIONS				AWOS	NAVIGATION			
CTAF	UNICOM	GCO	ATC	FREQ	TYPE	IDENT	FREQ	DIR/DIST
TOWER 118.5 GRND 122.9	122.95		121.4 CLNC DEL	ASOS 119.125	VOR	BNA	114.1	136° @ 11.1 NM

FBO Services: Contour 615-220-2957,
Hollingshead Aviation 615-459-3337
Contact: Lois Vallance 615-459-2651, John
Black 615-459-2651
Attended: 24 hours
Fuel: 100 LL, Jet A
Repairs: Major
Storage: Tie Down, Hangar
Accommodations: In Town

Wind Indicator: Cone
AWOS: 615-223-7716 ASOS
From City: 2 Miles N
Coordinates: N36°00.54 W86°31.21
Transportation: Courtesy car, Rental car
Remarks: Tower operates 7:00-22:00 mon-fri., 7:00-
19:00 Sat. and Sun. Use CTAF when tower is closed.

FAYETTE COUNTY-FYE

SOMERVILLE-70



Google Earth
©2017 Google

ELEVATION - 436'

RUNWAY	SURFACE	LENGTH	WIDTH	LIGHTS	VGI	REILS	APP	PATTERN
01/19	ASPHALT	5,000'	75'	MIRL	PAPI/	Y/Y		STANDARD

COMMUNICATIONS				AWOS	NAVIGATION			
CTAF	UNICOM	GCO	ATC	FREQ	TYPE	IDENT	FREQ	DIR/DIST
122.9			124.15 MEM APP	119.875	VOR	HLI	112.4	008° @ 26.7 NM

FBO Services: Fayette County
Contact: David Booth 901-466-7007
Attended: Daylight
Fuel: 100 LL, Jet A 24/7
Repairs: Major
Storage: Tie Down, Hangar
Accommodations: In Town

Wind Indicator: Cone
AWOS: 901-465-6367
From City: 2 Miles SW
Coordinates: N35°12.46 W89°23.67
Transportation: By request
Remarks:

UPPER CUMBERLAND REGIONAL-SRB

SPARTA-71



Google Earth
©2017 Google

ELEVATION - 1025'

RUNWAY	SURFACE	LENGTH	WIDTH	LIGHTS	VGI	REILS	APP	PATTERN
04/22	ASPHALT	*6,705'	100'	HIRL	PAPI/	Y/Y	ODALS 04	STANDARD

COMMUNICATIONS				AWOS	NAVIGATION			
CTAF	UNICOM	GCO	ATC	FREQ	TYPE	IDENT	FREQ	DIR/DIST
122.8	122.8	121.725	132.9 MEM CTR	128.25	VOR	HCH	117.6	304 ⁰ @ 31.6 NM

FBO Services: Region Air Services 931-738-2122

Contact: Jim Kmet 931-739-7000

Attended: 7:00-Dark

Fuel: 100 LL, Jet A

Repairs: Major

Storage: Tie Down, Hangar

Accommodations: In Town

Wind Indicator: Cone

AWOS: 931-738-3111

From City: 9 Miles NW

Coordinates: N36⁰03.36 W85⁰31.85

Transportation: Taxi, Rental, and Courtesy Car

Remarks: Pilot controlled lighting intensity,
*Displ Rwy 22 700'

SPRINGFIELD-ROBERTSON COUNTY-M91

SPRINGFIELD-72



ELEVATION - 706'

RUNWAY	SURFACE	LENGTH	WIDTH	LIGHTS	VGI	REILS	APP	PATTERN
04/22	ASPHALT	5,505'	100'	MIRL	PAPI/	Y/Y		STANDARD

COMMUNICATIONS				AWOS	NAVIGATION			
CTAF	UNICOM	GCO	ATC	FREQ	TYPE	IDENT	FREQ	DIR/DIST
123.0	123.0	121.725	119.35 BNA APP	120.675	VOR	BNA	114.1	103° @ 24.3 NM

FBO Services: Wingnuts Aviation
615-384-3200
Contact: 615-384-3200
Attended: 8:00-17:00
Fuel: 100 LL, Jet A
Repairs: Major
Storage: Tie Down, Hangar
Accommodations: In Town

Wind Indicator: Cone
AWOS: 615-384-8206
From City: 3 Miles NW
Coordinates: N36°32.20 W86°55.27
Transportation: Taxi, and Courtesy Car
Remarks:

NEW TAZEWELL MUNICIPAL-3A2

TAZEWELL-73



Google Earth
©2011 Google

ELEVATION - 1179'

RUNWAY	SURFACE	LENGTH	WIDTH	LIGHTS	VGI	REILS	APP	PATTERN
07/25	ASPHALT	5,208'	75'	MIRL	PAPI/PAPI	Y/Y		STANDARD

COMMUNICATIONS				AWOS	NAVIGATION			
CTAF	UNICOM	GCO	ATC	FREQ	TYPE	IDENT	FREQ	DIR/DIST
122.9					VOR	VXV	116.4	031° @ 34.5 NM

FBO Services: City of New Tazewell

Contact: 423-489-9256

Attended: Unattended

Fuel: 100 LL

Repairs: Major

Storage: Tie Down, Hangar

Accommodations: In Town

Wind Indicator: Cone

AWOS:

From City: 3 Miles SE

Coordinates: N36°24.53 W83°33.43

Transportation:

Remarks: High terrain all quadrants, Use CTAF to activate PAPIs

REELFOOT-0M2

TIPTONVILLE-74



ELEVATION - 289'

RUNWAY	SURFACE	LENGTH	WIDTH	LIGHTS	VGI	REILS	APP	PATTERN
01/19	ASPHALT	3,500'	75'					19 RH

COMMUNICATIONS				AWOS	NAVIGATION			
CTAF	UNICOM	GCO	ATC	FREQ	TYPE	IDENT	FREQ	DIR/DIST
122.9					VOR	MAW	111.2	097° @ 27.7 NM

FBO Services: None
Contact: John Briggs 615-532-3785
Attended: Unattended
Fuel:
Repairs:
Storage: Tie Down
Accommodations:

Wind Indicator: Cone
AWOS:
From City: 9 Miles NE
Coordinates: N36°28.52 W89°20.78
Transportation:
Remarks: Park Inn is closed. Maintain 2,000 AGL over lake east of the airport. (National Wildlife Refuge)

GIBSON COUNTY-TGC

TRENTON-75



ELEVATION - 358'

RUNWAY	SURFACE	LENGTH	WIDTH	LIGHTS	VGI	REILS	APP	PATTERN
01/19	ASPHALT	4,802'	75'	MIRL	PAPI/PAPI	Y/Y		STANDARD

COMMUNICATIONS				AWOS	NAVIGATION			
CTAF	UNICOM	GCO	ATC	FREQ	TYPE	IDENT	FREQ	DIR/DIST
122.8	122.8		134.65 MEM CTR		VOR	DYR	116.8	100° @ 23.4 NM

FBO Services: Gibson County

Contact: Robert Lockard 731-723-9596

Attended: Mon-Sat. 9:00-17:00, Unattended Sun.

Fuel: 100LL Jet A

Repairs: None

Storage: Tie Down, Hangar

Accommodations: In Town

Wind Indicator: Cone

AWOS:

From City: 5 Miles SE

Coordinates: N35°55.95 W88°50.94

Transportation: Taxi, Rental Car

Remarks:

TULLAHOMA REGIONAL-THA

TULLAHOMA-76



ELEVATION - 1084'

RUNWAY	SURFACE	LENGTH	WIDTH	LIGHTS	VGI	REILS	APP	PATTERN
18/36	ASPH/ CONC	5,002'	100'	MIRL	PAPI/ PAPI	Y/Y	ODALS/N	STANDARD
09/27	TURF	2,693'	100'	CONE	N/N	N/N	NONE	RWY 9 RH
06/24	ASPH/ CONC	*5,501'	100'	MIRL	PAPI/ PAPI	Y/Y	ODALS/S	RWY 27 LH

COMMUNICATIONS				AWOS	NAVIGATION			
CTAF	UNICOM	GCO	ATC	FREQ	TYPE	IDENT	FREQ	DIR/DIST
123.0	123.0		126.75 MEM CTR	128.325	VOR	SYI	109.0	140° @ 14.4 NM

FBO Services: Tullahoma Arpt. Auth.

Contact: Jon Glass 931-455-3884

Attended: Daylight hours

Fuel: 100LL Jet A

Repairs: Major

Storage: Tie Down, Hangar

Accommodations: In Town

Wind Indicator: Cone

AWOS: 931-454-2052

From City: 2 Miles NW

Coordinates: N35°22.80 W86°14.80

Transportation: Taxi, Rental Car

Remarks: *Rwy 24 Thres Displ 500'

EVERETT STEWART-UCY

UNION CITY-77



ELEVATION - 346'

RUNWAY	SURFACE	LENGTH	WIDTH	LIGHTS	VGI	REILS	APP	PATTERN
01/19	ASPHALT	6,503'	100'	MIRL	PAPI/	Y/Y	ODALS/N	STANDARD

COMMUNICATIONS				AWOS	NAVIGATION			
CTAF	UNICOM	GCO	ATC	FREQ	TYPE	IDENT	FREQ	DIR/DIST
122.7	122.7		134.65 MEM CTR	135.325	VOR	DYR	116.8	034° @ 27.0 NM

FBO Services: Everett-Stewart Reg. Arpt Board
Contact: Jo Ann Speer 731-885-1221
Attended: Daylight hours
Fuel: 100LL Jet A
Repairs: Major
Storage: Tie Down, Hangar
Accommodations: In Town

Wind Indicator: Cone
AWOS: 731-885-9161
From City: 4 Miles SE
Coordinates: N36°22.78 W88°59.14
Transportation: Rental Car, Courtesy Car
Remarks:

HUMPHREYS COUNTY-0M5

WAVERLY-78



ELEVATION - 756'

RUNWAY	SURFACE	LENGTH	WIDTH	LIGHTS	VGI	REILS	APP	PATTERN
03/21	ASPHALT	4,000'	75'	MIRL	PAPI/PAPI	Y/Y		STANDARD

COMMUNICATIONS				AWOS	NAVIGATION			
CTAF	UNICOM	GCO	ATC	FREQ	TYPE	IDENT	FREQ	DIR/DIST
122.8	122.8		125.85 MEM CTR		VOR	GHM	111.6	318° @ 21.9 NM

FBO Services: Humphrey's County
Contact: Jeff Fincher 931-296-2719
Attended: 8:00-17:00 M-F
Fuel: 100LL Jet A 24/7
Repairs: None
Storage: Tie Down, Hangar
Accommodations: In Town

Wind Indicator: Cone
AWOS:
From City: 3 Miles NE
Coordinates: N36°07.00 W87°44.29
Transportation: Courtesy Car
Remarks: Parachute Jumping

WINCHESTER MUNICIPAL-BGF

WINCHESTER-79



ELEVATION - 979'

RUNWAY	SURFACE	LENGTH	WIDTH	LIGHTS	VGI	REILS	APP	PATTERN
18/36	ASPHALT	5,002'	75'	MIRL	PAPI/	Y/Y		STANDARD

COMMUNICATIONS				AWOS	NAVIGATION			
CTAF	UNICOM	GCO	ATC	FREQ	TYPE	IDENT	FREQ	DIR/DIST
122.8	122.8	121.725	126.75 MEM CTR	121.675	VOR	SYI	109.0	142° @ 29.4 NM

FBO Services: Winchester Arpt. Auth.

Contact: Zachary Colescott 931-967-3148

Attended: 8:00-18:00

Fuel: 100LL Jet A 24/7

Repairs: None

Storage: Tie Down, Hangar

Accommodations: In Town

Wind Indicator: Cone

AWOS: 931-967-8445

From City: 3 Miles SE

Coordinates: N35°10.65 W86°03.97

Transportation: Courtesy Car and Rental Car

Remarks: