



NORTH CAROLINA
Department of Transportation

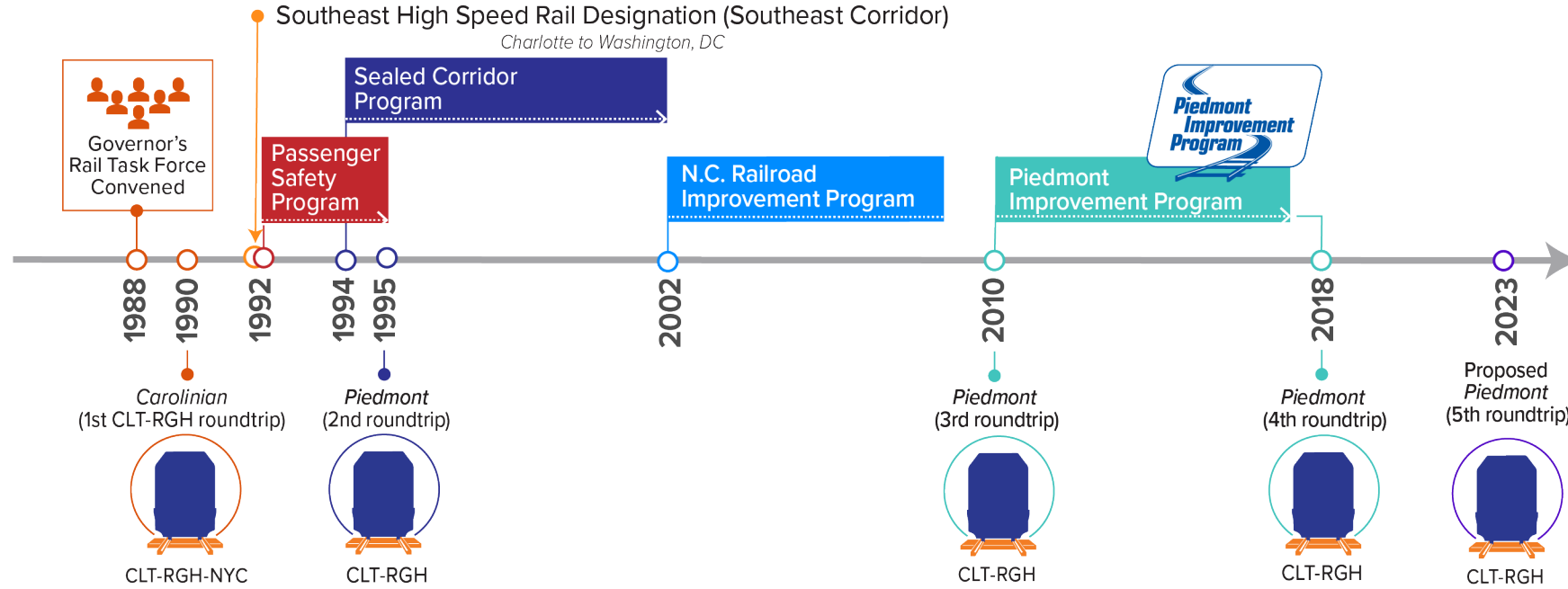
Passenger Rail Service in North Carolina

Julie White, Deputy Secretary of Multi-Modal Transportation

January 27, 2023

Connecting people, products and places safely and efficiently with customer focus, accountability and environmental sensitivity to enhance the economy and vitality of North Carolina

North Carolina Passenger Rail Service Development



1990
Inaugural of the
Amtrak Carolinian



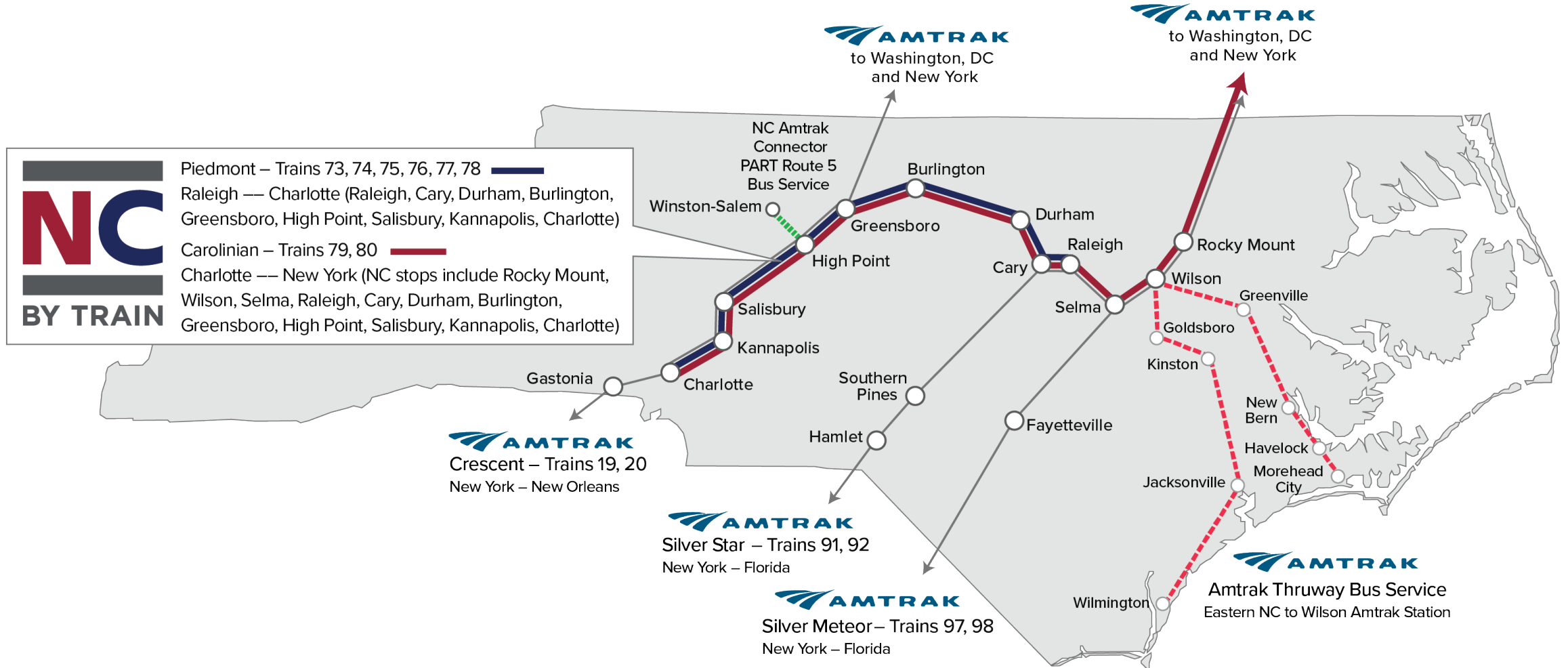
1995
Inaugural of the
NCDOT Piedmont





NC State-supported Passenger Service

Four daily round trips between Raleigh and Charlotte





NC State-supported Passenger Service

Record setting ridership in 2022



- 4 round trips daily between Raleigh and Charlotte
- Trains operated by Amtrak
- 5th Raleigh to Charlotte round-trip to start 2023

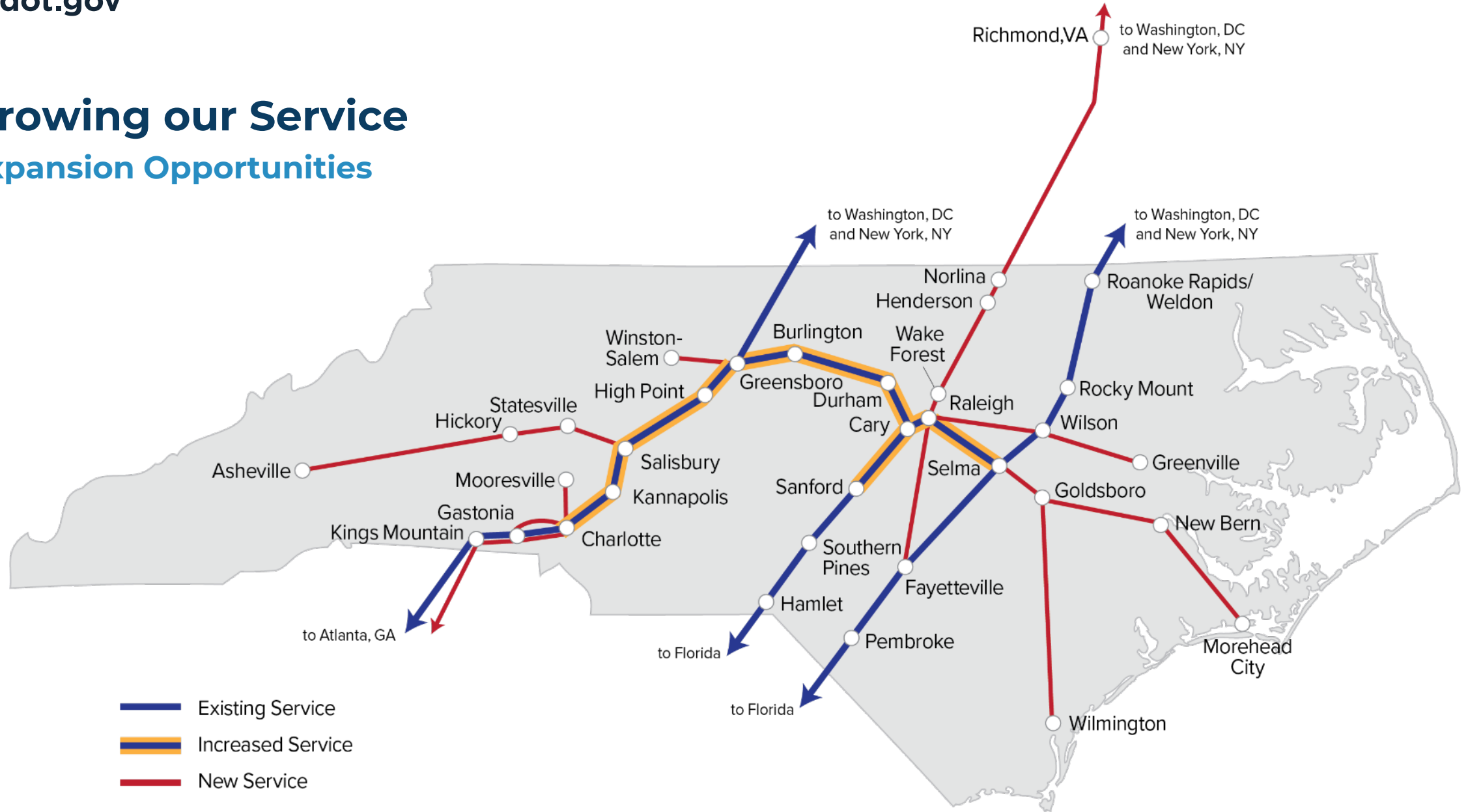


Our partners:



Growing our Service

Expansion Opportunities



Towns shown are for geographical reference only and do not represent station locations.

Charlotte Gateway Station – Phase I complete

Track and Structure

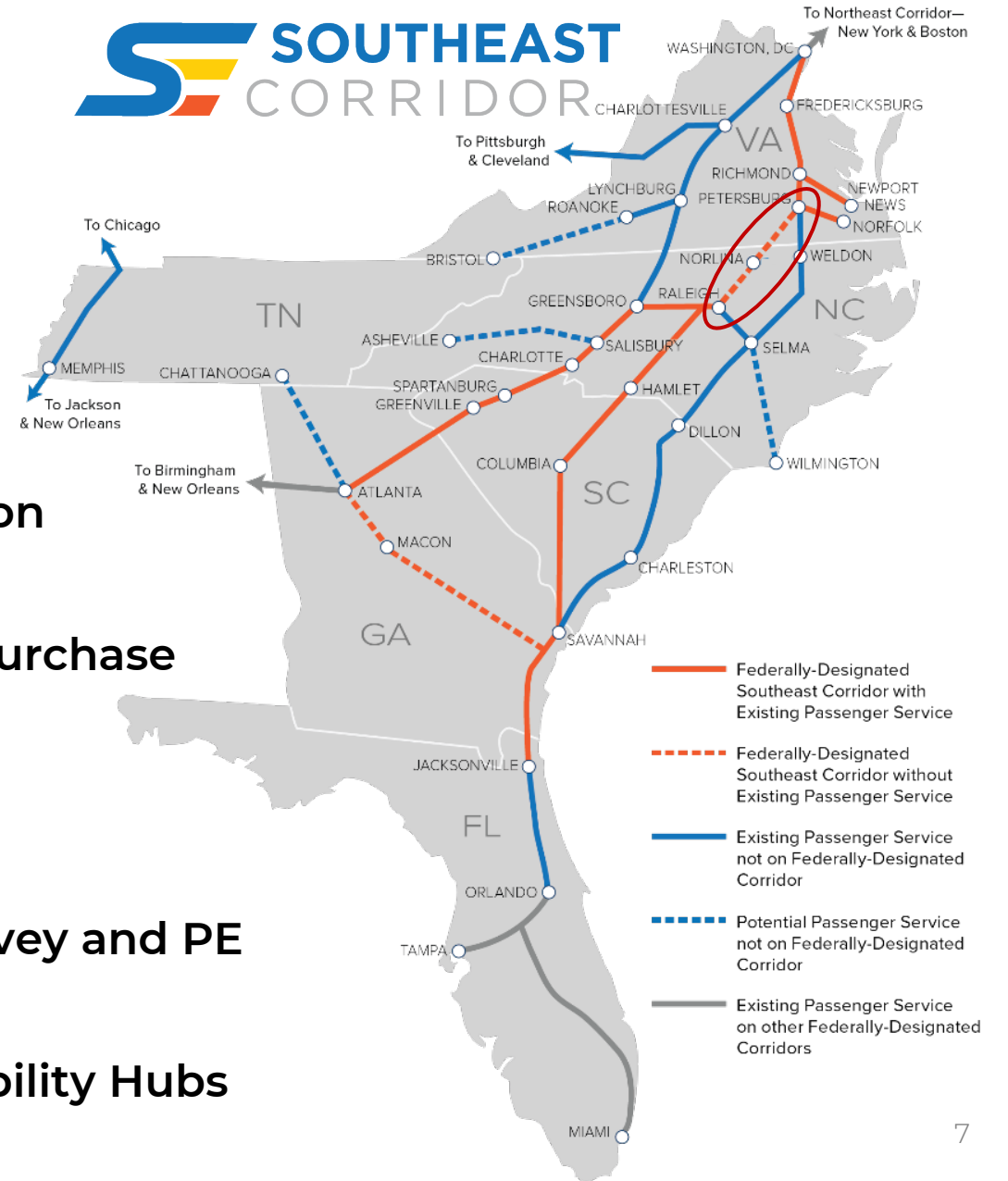
- Installed 7 rail bridges to support passenger tracks and platforms
- 1100', Center island, level boarding platform
- Railroad track and signals
- Retaining Walls
- Managed by Rail Division – on time and on budget

Phase II
Charlotte Gateway Station
set to open in 2026



The S-Line – Gateway to the Southeast

- 1992** FRA designated the Southeast Corridor
- ↓
- 2002** Charlotte to DC Tier I Record of Decision
- ↓
- 2017** Raleigh to Richmond Tier II Record of Decision
- ↓
- 2020** NCDOT wins \$48M CRISI grant for corridor purchase
- ↓
- 2021** Communities win \$900K FTA TOD grant
- ↓
- 2022** NCDOT / VPRA win \$58M CRISI grant for Survey and PE
- ↓
- 2022** Communities win \$3.4M RAISE grant for Mobility Hubs



Raleigh-Richmond Activities

- Corridor acquisition from CSX underway
- Service development underway
- Corridor photogrammetry/survey underway
- Broad community engagement ongoing
- **FY 21 CRISI Grant for 30% engineering**
 - ✓ 162 miles of railroad design
 - ✓ 82 miles of roadway design
- Developing and submitting grants and establishing matching funds:
 - Submitted FY 22 CRISI Grant for 60% Engineering
 - Preparing FY 22 Fed-State Partnership Grant Application



Keys to Success

- Strong partnerships



- Leveraging state and local with federal funds
- Bipartisan support
- Focus on:
 - connecting urban and rural communities
 - Planning TOD with passenger rail
 - Equally expanding freight and passenger rail
- Deep experience and knowledge within in-house team



S-Line Transit Oriented Development Federal Planning Grant – \$900K

Linking Land Use and Transportation Planning

- Understand the possibilities
- Plan the “place” around transit
- Proactively plan context-driven TOD

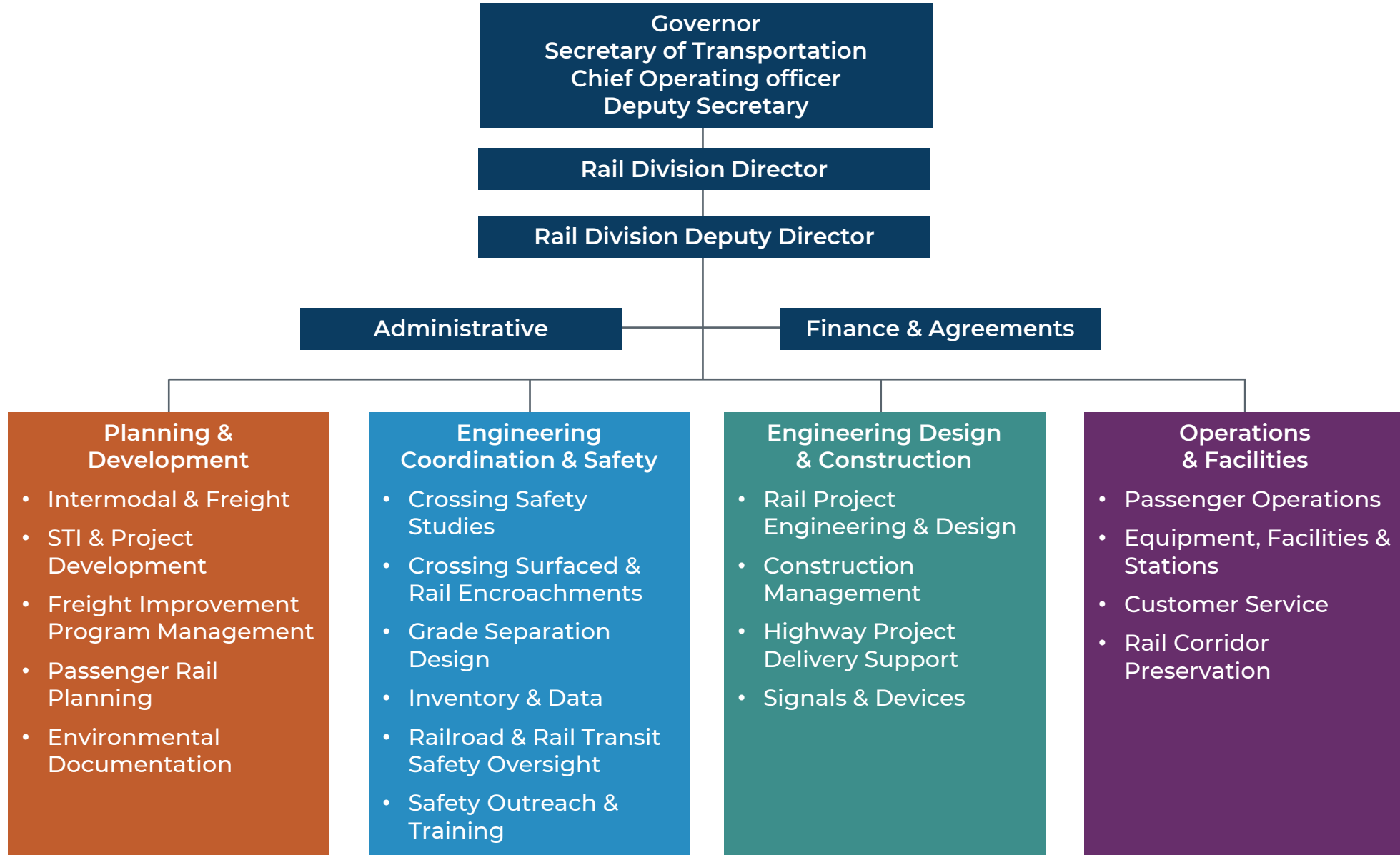
• Corridor-wide Conversations

- Funding / financing
- Transit operations

• Local Implementation

- Land use plans/Zoning
- Regulatory Policies
- Infrastructure investments





Thank you!
