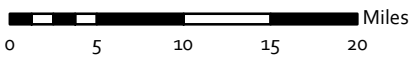
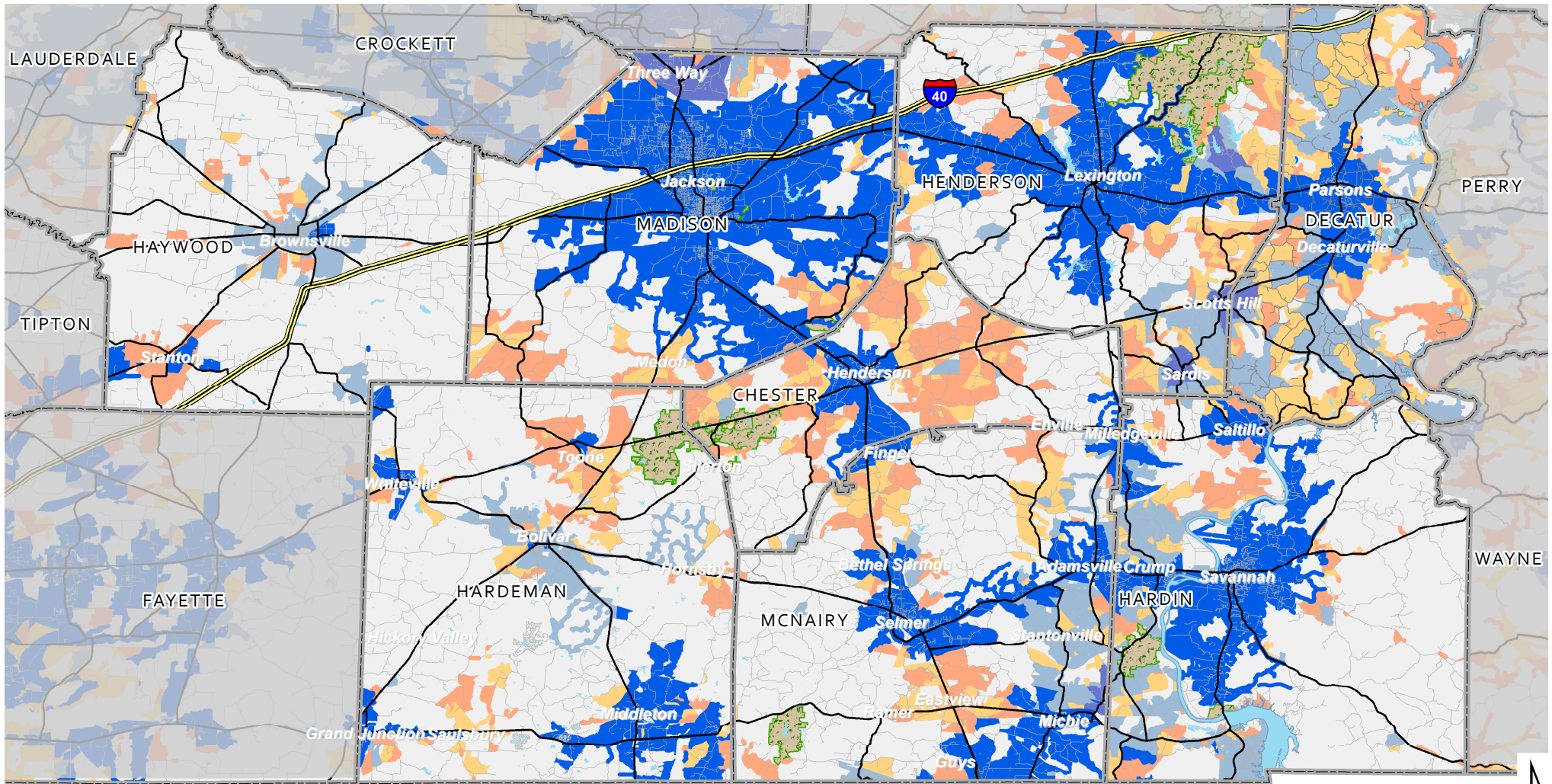


# Attachment A: Example of Maximum Advertised Download Speeds Reported by Providers (Southwest Tennessee Development District)



## Maximum Advertised Downstream Speed as Reported by Providers (Census Blocks and Road Segments)



Note: Data shown for all wired technologies—DSL, Cable, and Fiber. Maximum available speed shown. Typical customer speeds may vary from reported maximum advertised speeds.

Source: US Department of Commerce, National Telecommunications and Information Administration, State Broadband Initiative. Most recent data available is current as of June 30, 2014.