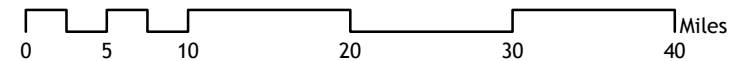
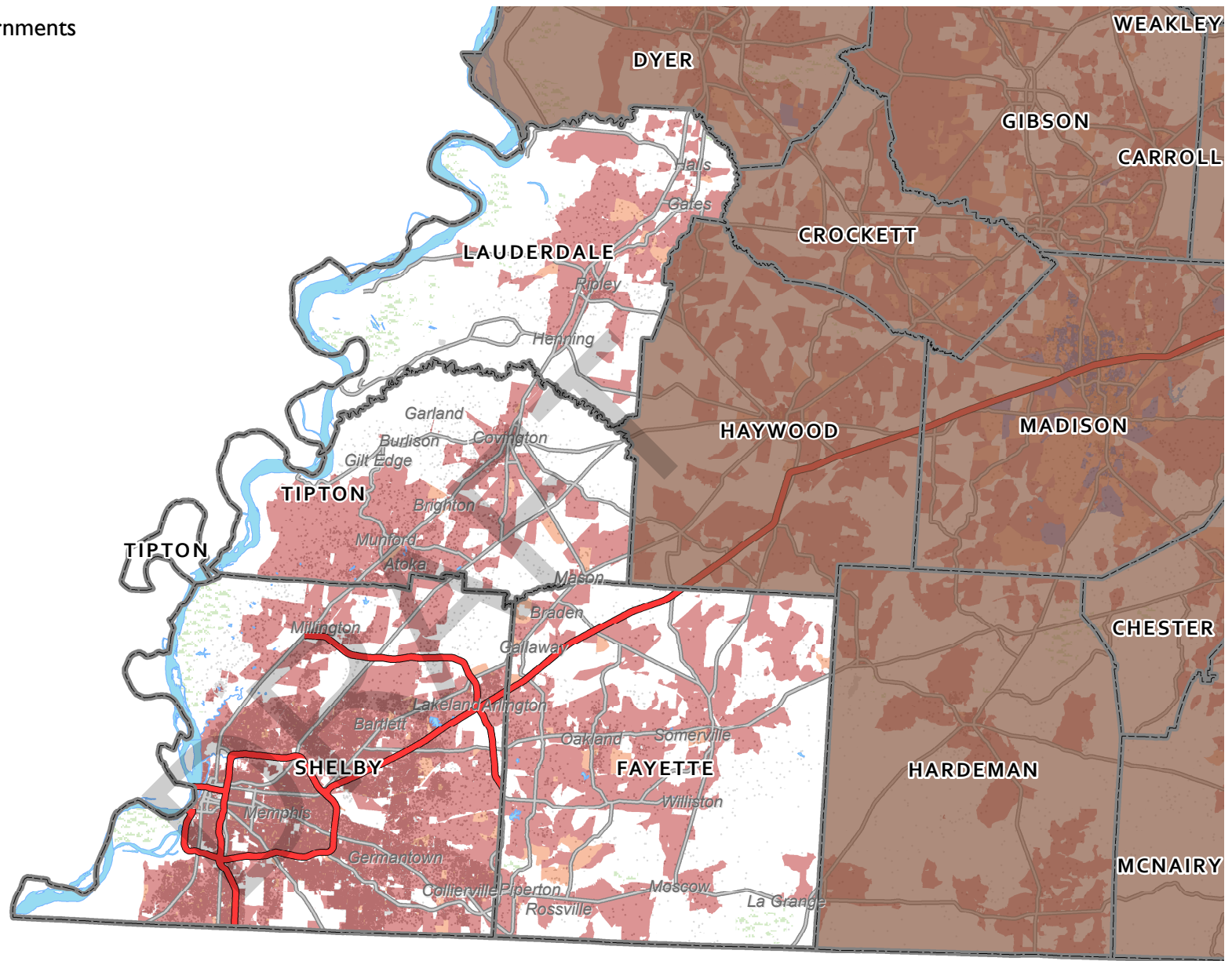
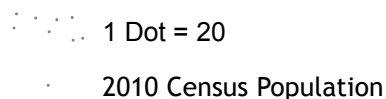
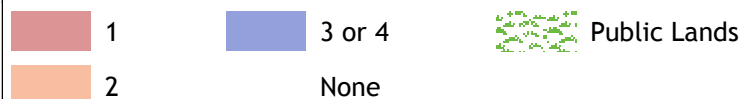


**Appendix O: Number of Providers Reporting Download Capacities of At Least 25 Megabits per Second for Wireline and Fixed Wireless Service as of December 2015**

DRAFT

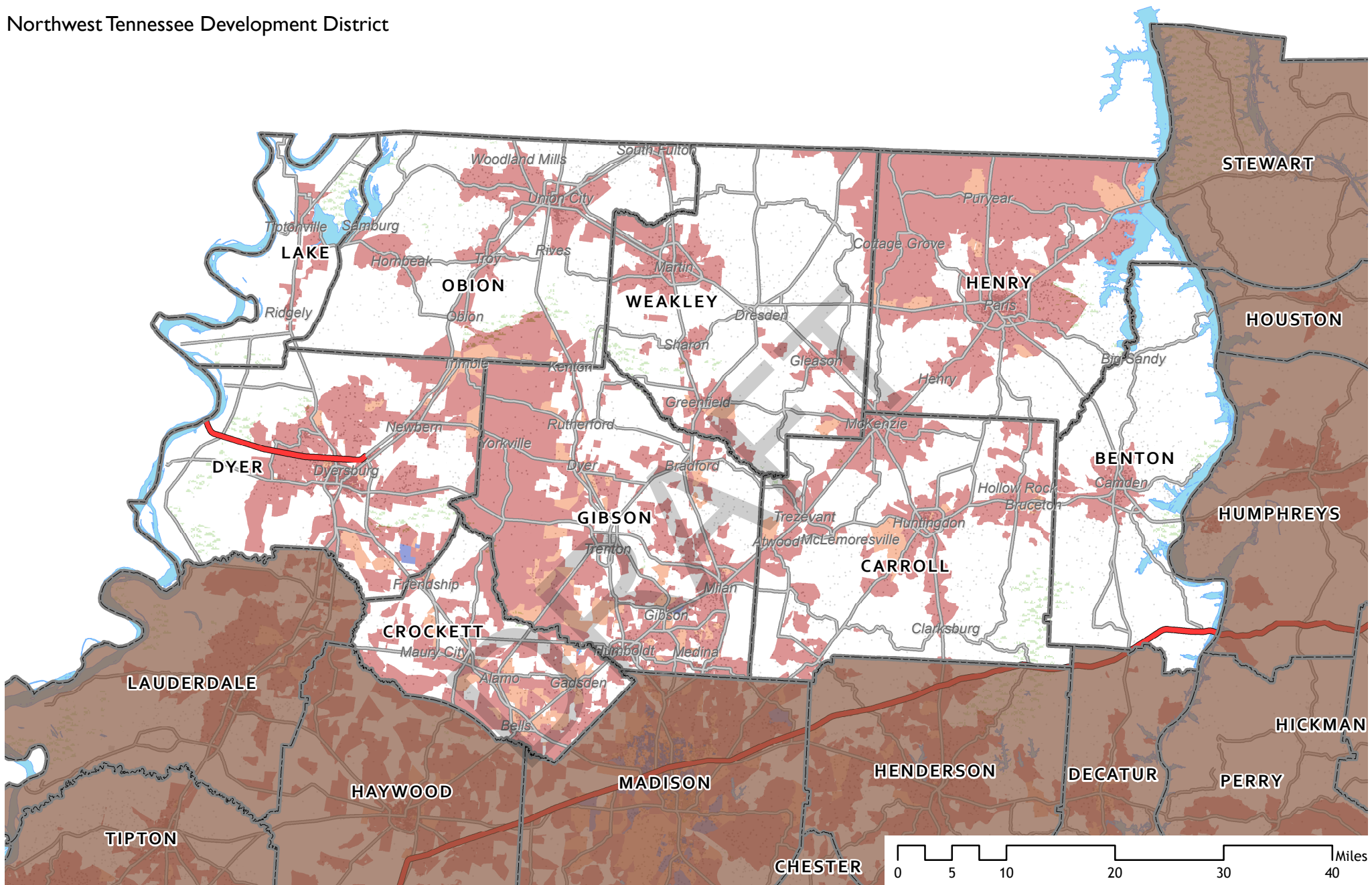


**Availability of Download Speeds 25 Mbps and Faster \***  
**Number of Providers:**

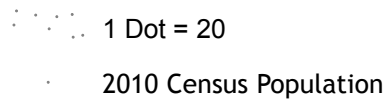
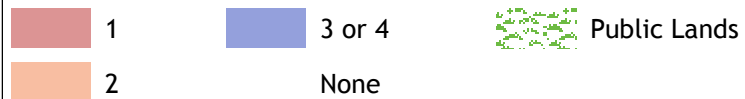


\* Includes services through Asymmetric or Symmetric xDSL, Cable Modem, Optical/Fiber-to-the-home, and Terrestrial Fixed Wireless. Fixed Broadband Deployment Data from FCC Form 477, December 31, 2015, as reported by providers at the census block level.

# Northwest Tennessee Development District



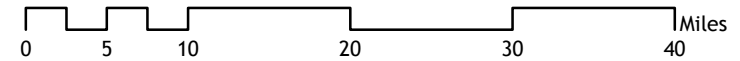
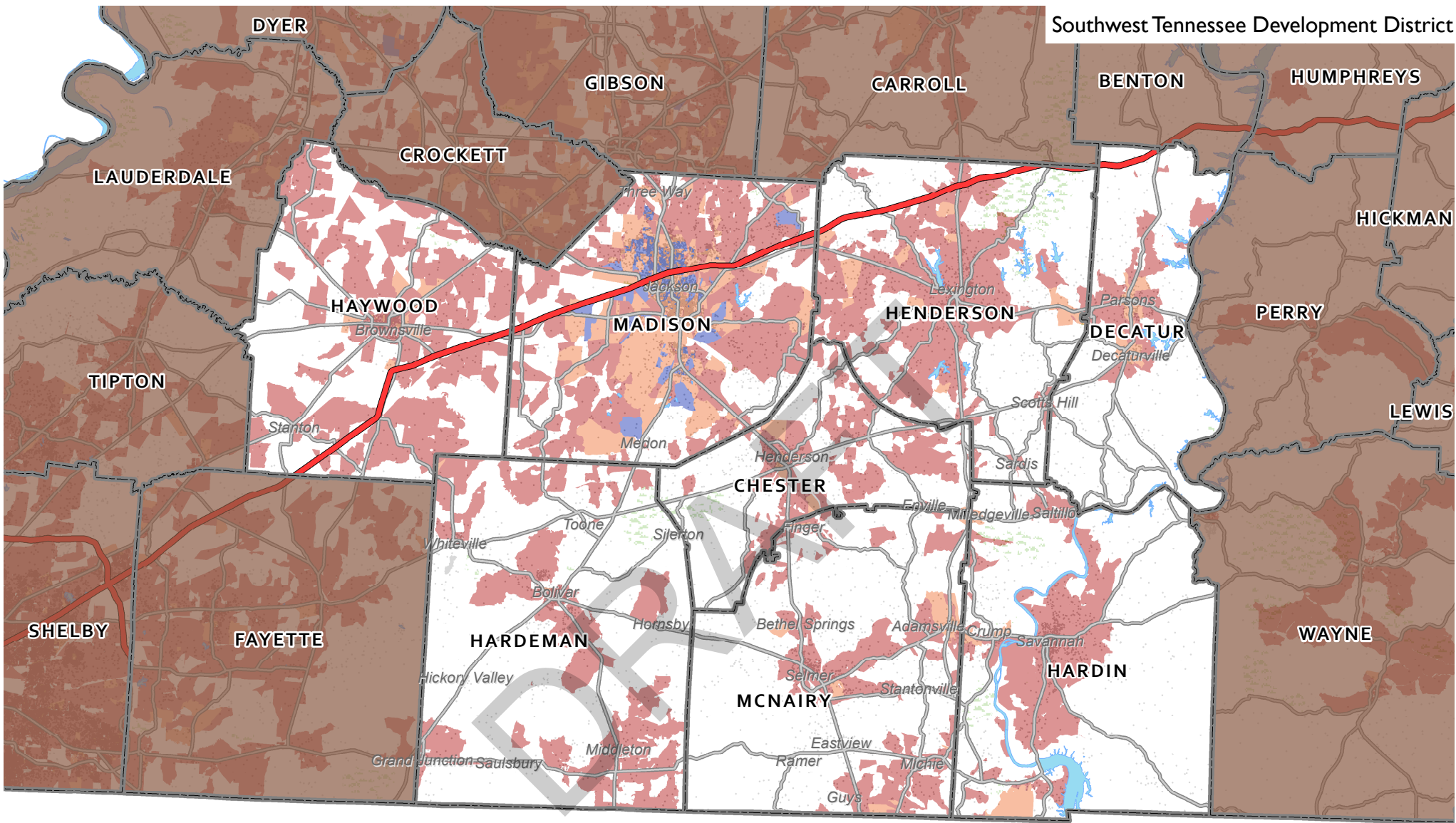
## Availability of Download Speeds 25 Mbps and Faster \* Number of Providers:



\* Includes services through Asymmetric or Symmetric xDSL, Cable Modem, Optical/Fiber-to-the-home, and Terrestrial Fixed Wireless. Fixed Broadband Deployment Data from FCC Form 477, December 31, 2015, as reported by providers at the census block level.

Scale = 1 : 750,000




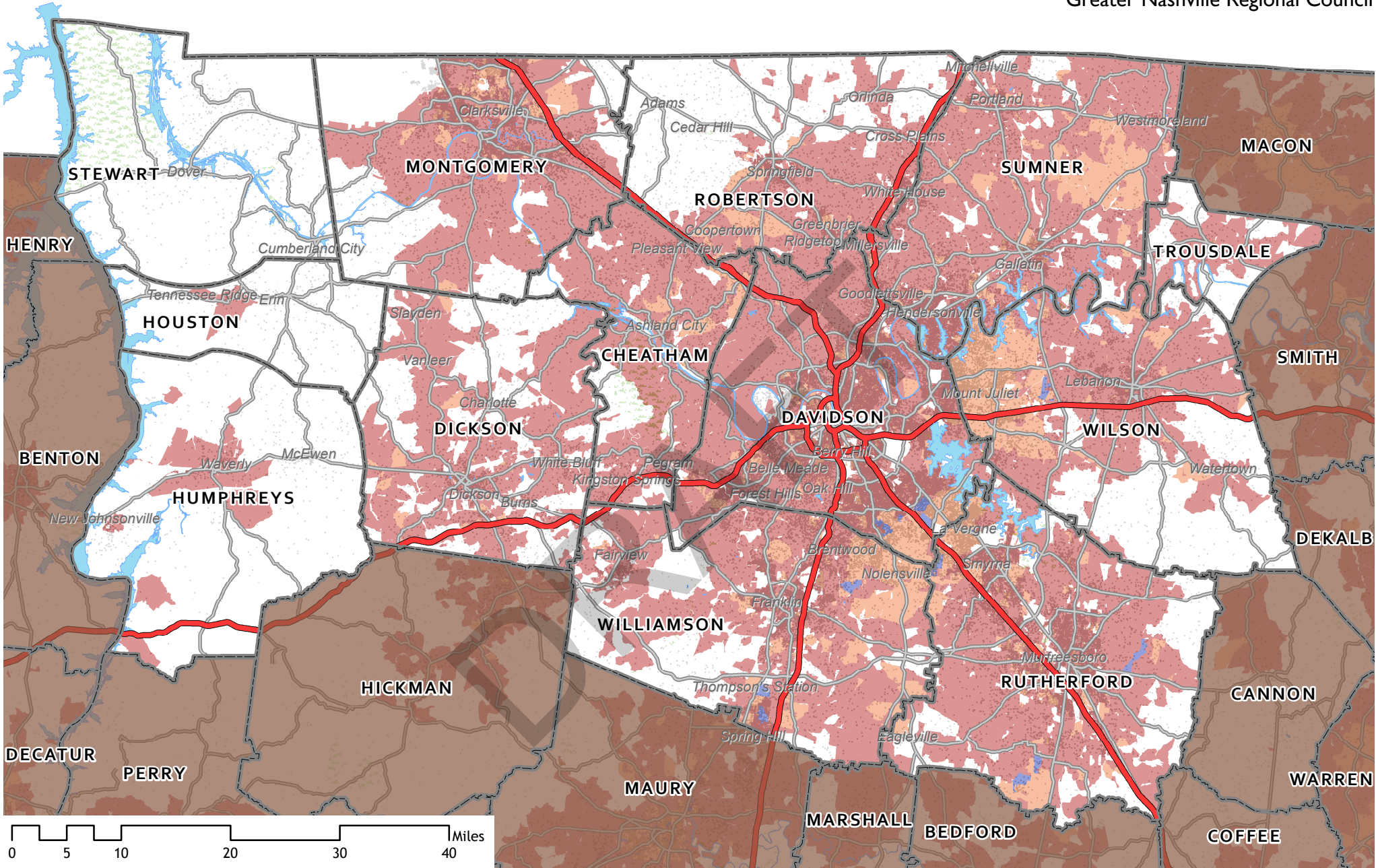


**Availability of Download Speeds 25 Mbps and Faster \*  
Number of Providers:**



\* Includes services through Asymmetric or Symmetric xDSL, Cable Modem, Optical/Fiber-to-the-home, and Terrestrial Fixed Wireless. Fixed Broadband Deployment Data from FCC Form 477, December 31, 2015, as reported by providers at the census block level.

Scale = 1 : 750,000 

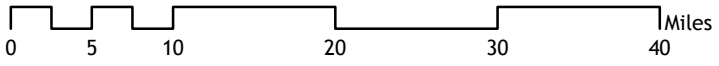
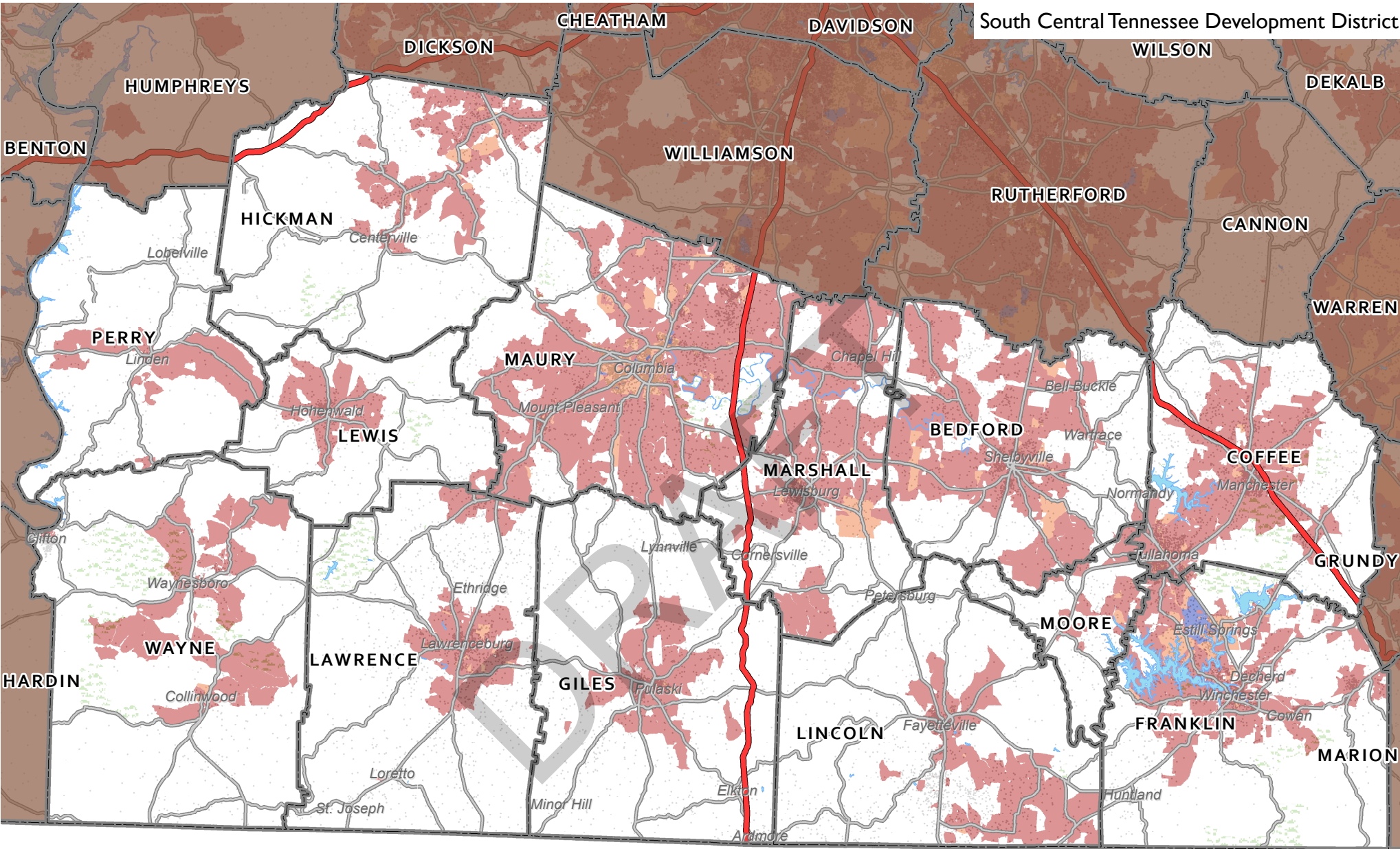


**Availability of Download Speeds 25 Mbps and Faster \*  
Number of Providers:**

- 1
- 3 or 4
- Public Lands
- None

- 1 Dot = 20
- 2010 Census Population

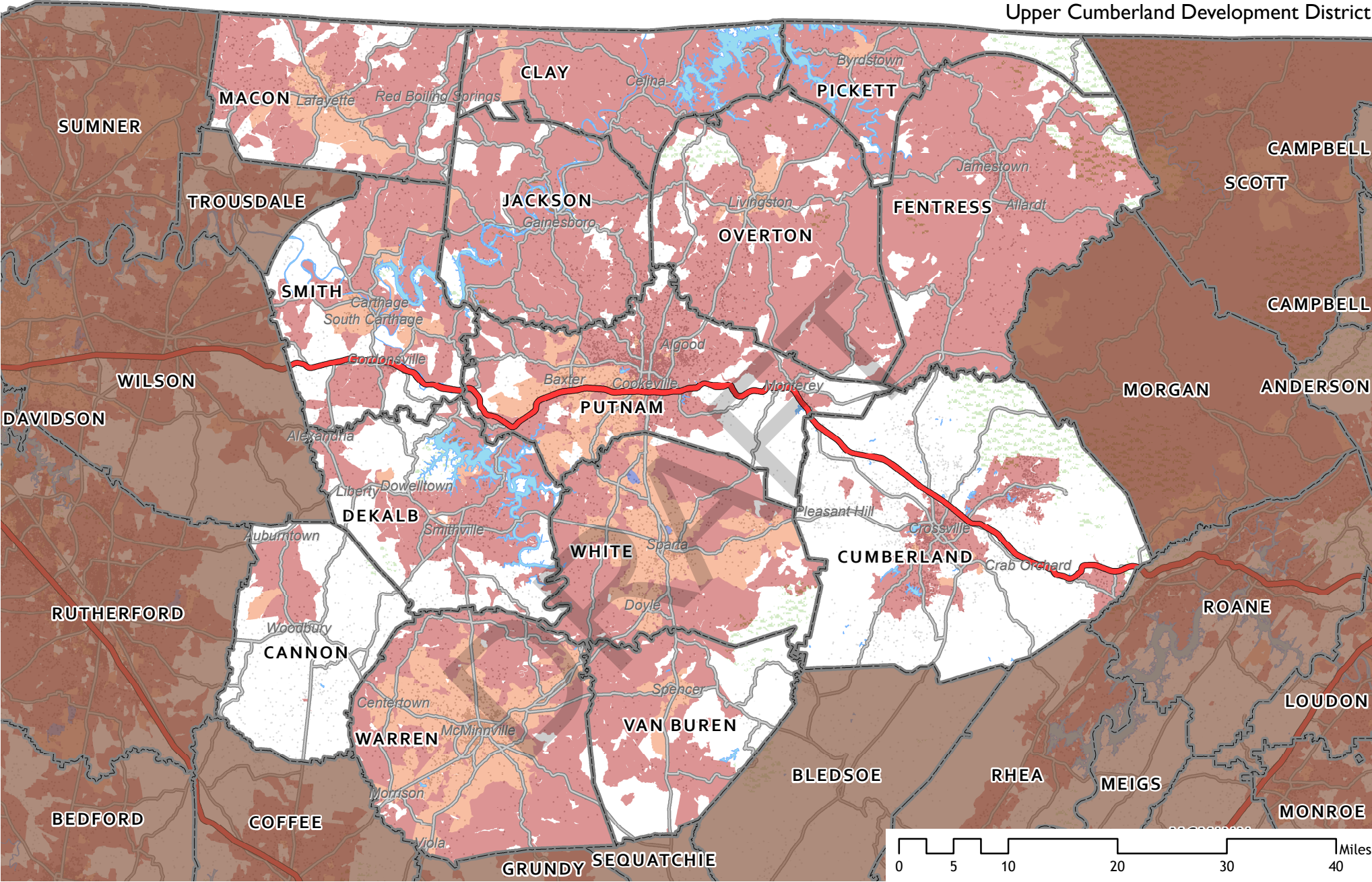
\* Includes services through Asymmetric or Symmetric xDSL, Cable Modem, Optical/Fiber-to-the-home, and Terrestrial Fixed Wireless. Fixed Broadband Deployment Data from FCC Form 477, December 31, 2015, as reported by providers at the census block level.



**Availability of Download Speeds 25 Mbps and Faster \***  
**Number of Providers:**

- 1
- 3 or 4
- Public Lands
- 1 Dot = 20
- 2
- None
- 2010 Census Population

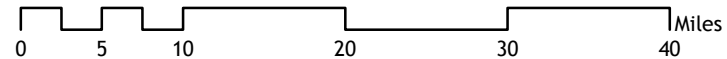
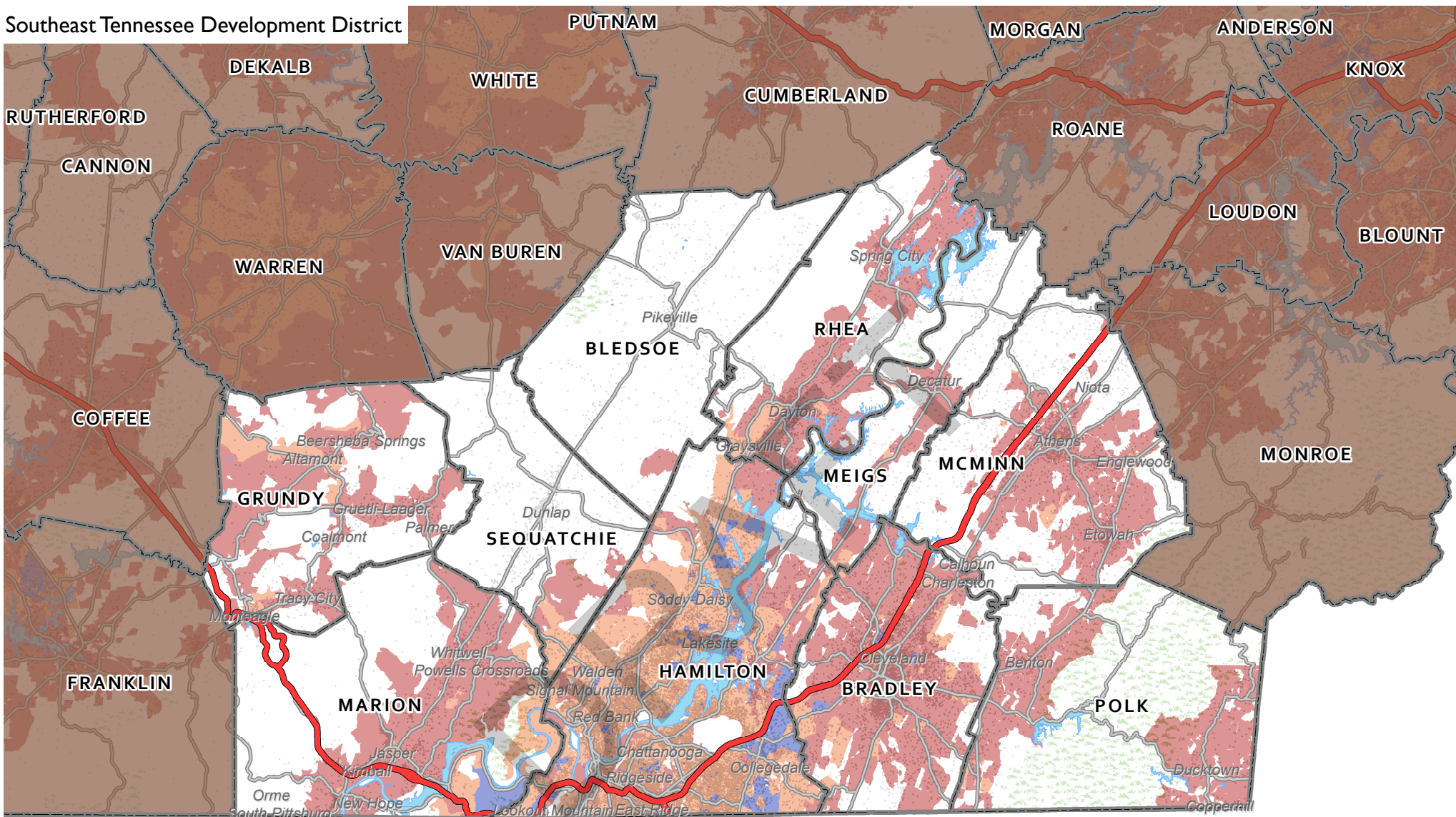
\* Includes services through Asymmetric or Symmetric xDSL, Cable Modem, Optical/Fiber-to-the-home, and Terrestrial Fixed Wireless. Fixed Broadband Deployment Data from FCC Form 477, December 31, 2015, as reported by providers at the census block level.



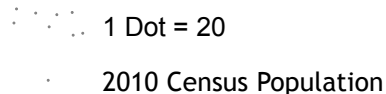
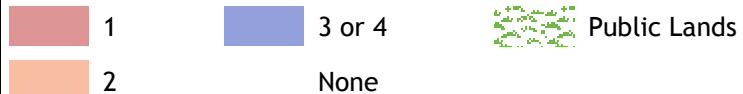
**Availability of Download Speeds 25 Mbps and Faster \***  
**Number of Providers:**

- 1
- 3 or 4
- Public Lands
- 1 Dot = 20
- 2010 Census Population
- None

\* Includes services through Asymmetric or Symmetric xDSL, Cable Modem, Optical/Fiber-to-the-home, and Terrestrial Fixed Wireless. Fixed Broadband Deployment Data from FCC Form 477, December 31, 2015, as reported by providers at the census block level.

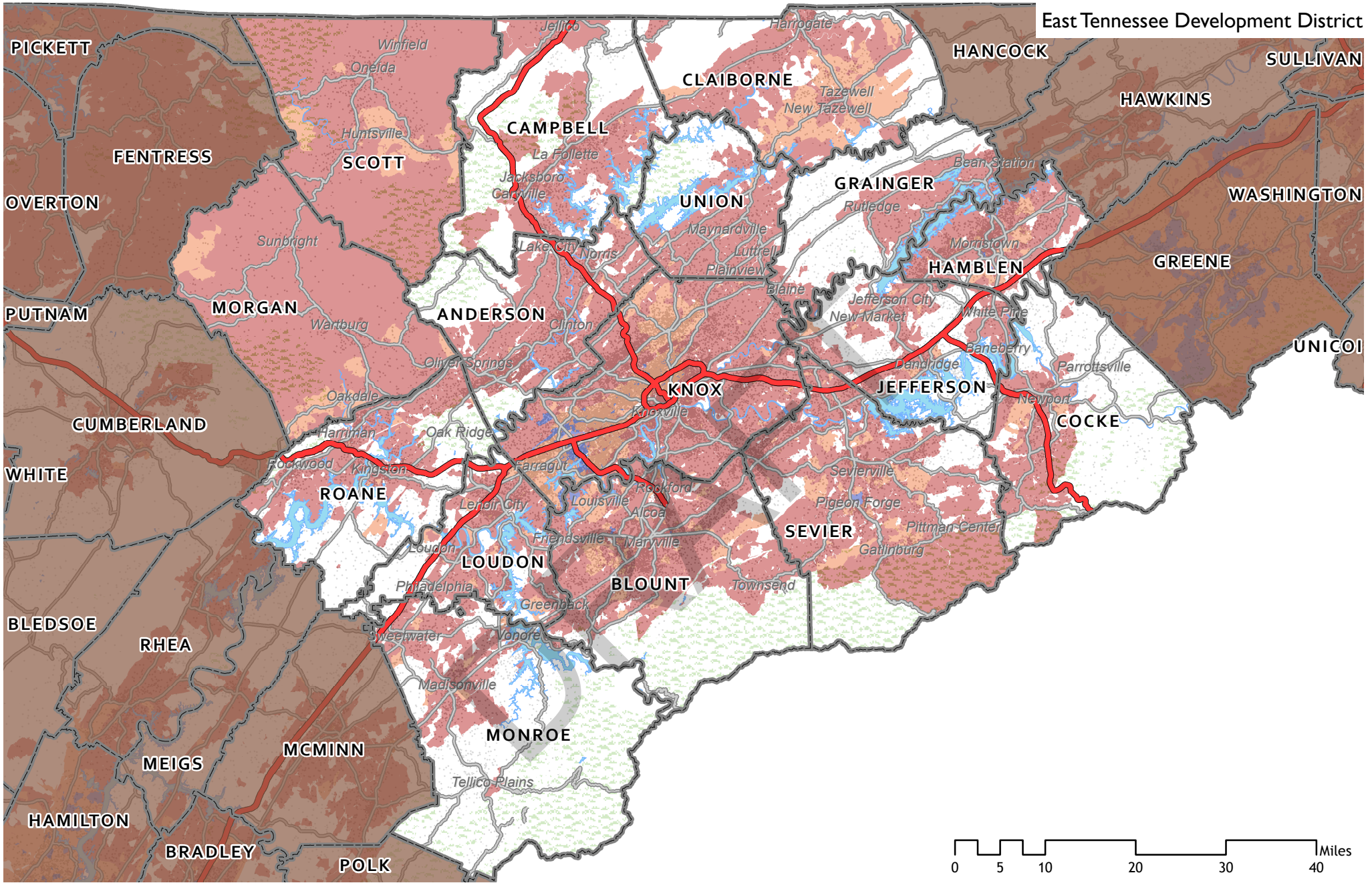


**Availability of Download Speeds 25 Mbps and Faster \*  
Number of Providers:**

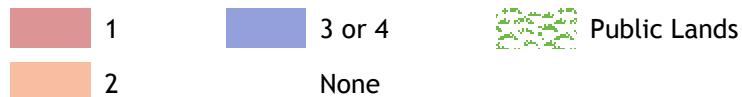


\* Includes services through Asymmetric or Symmetric xDSL, Cable Modem, Optical/Fiber-to-the-home, and Terrestrial Fixed Wireless. Fixed Broadband Deployment Data from FCC Form 477, December 31, 2015, as reported by providers at the census block level.





**Availability of Download Speeds 25 Mbps and Faster \***  
**Number of Providers:**

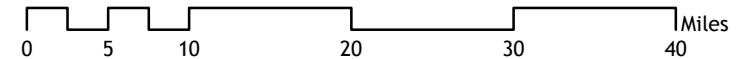
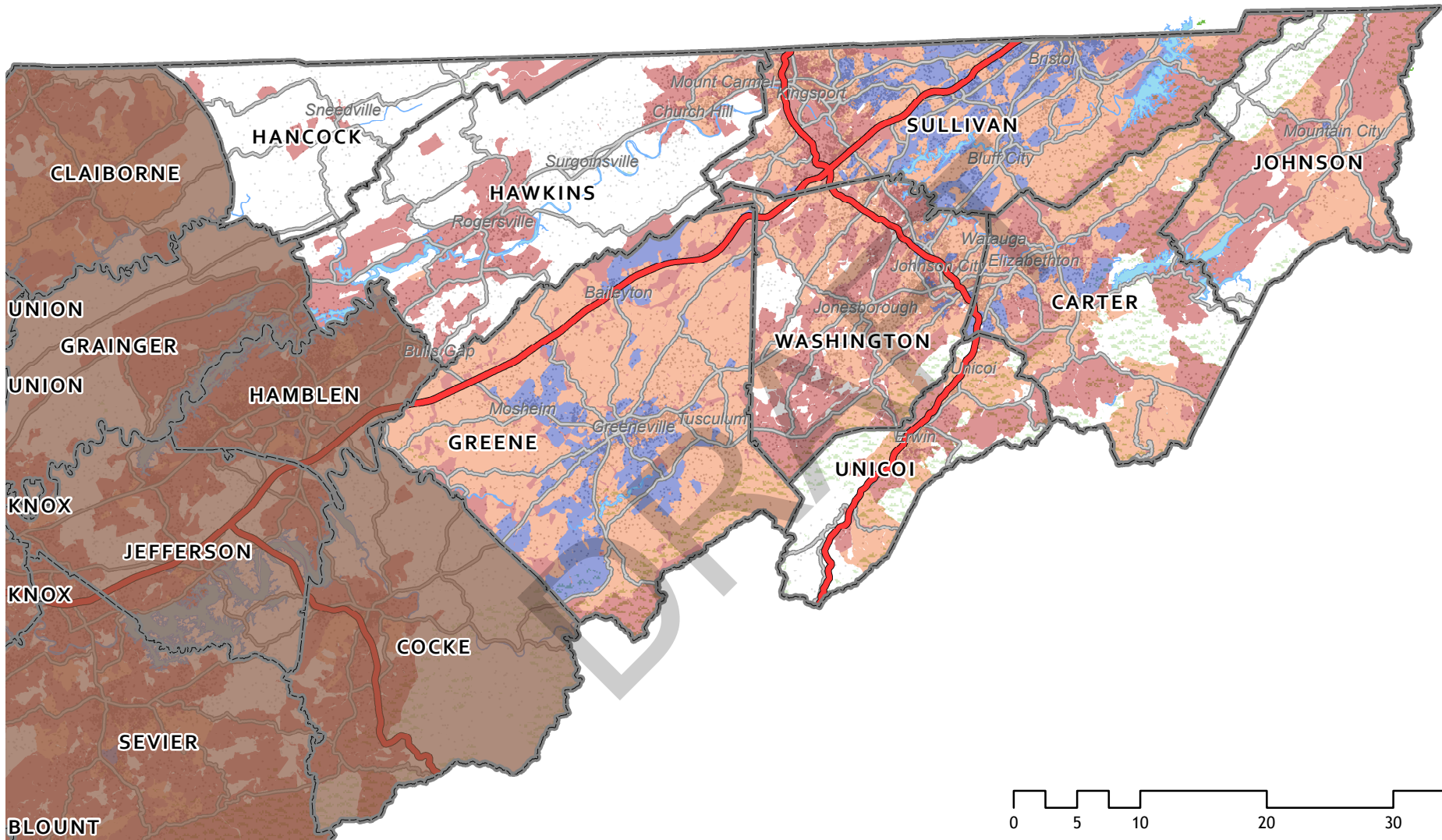


\* Includes services through Asymmetric or Symmetric xDSL, Cable Modem, Optical/Fiber-to-the-home, and Terrestrial Fixed Wireless. Fixed Broadband Deployment Data from FCC Form 477, December 31, 2015, as reported by providers at the census block level.

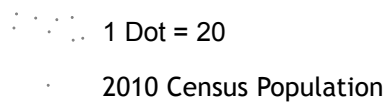
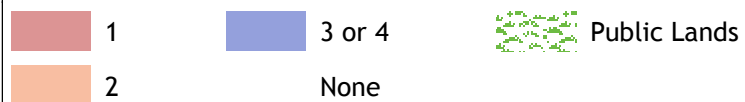
2010 Census Population

Scale = 1 : 900,000





**Availability of Download Speeds 25 Mbps and Faster \*  
Number of Providers:**



\* Includes services through Asymmetric or Symmetric xDSL, Cable Modem, Optical/Fiber-to-the-home, and Terrestrial Fixed Wireless. Fixed Broadband Deployment Data from FCC Form 477, December 31, 2015, as reported by providers at the census block level.