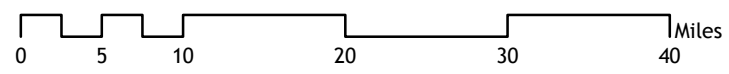
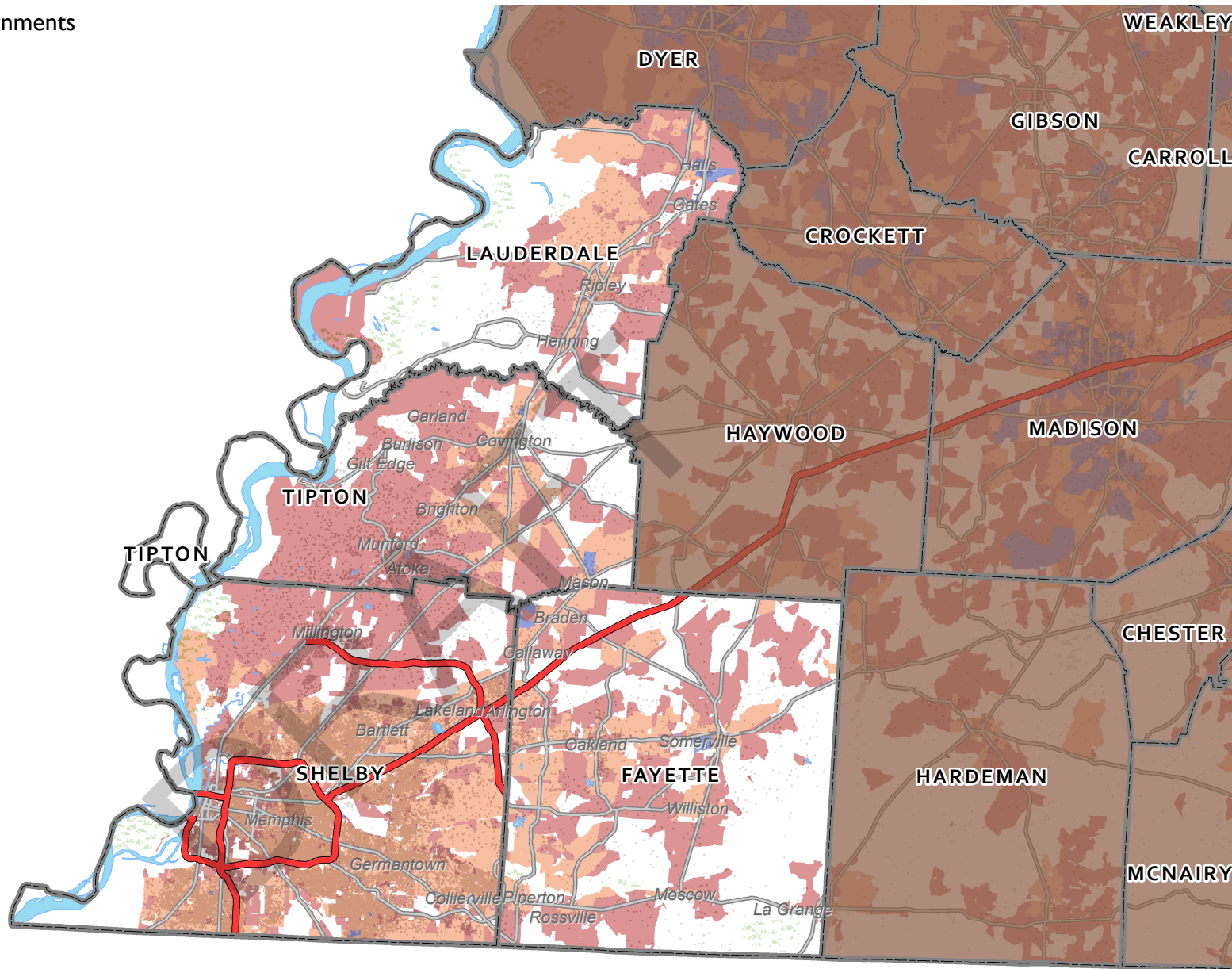
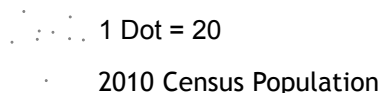
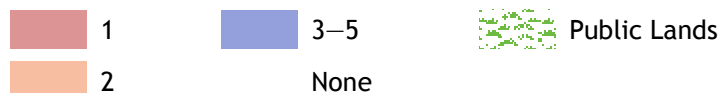


Appendix N: Number of Providers Reporting Download Capacities of At Least 10 Megabits per Second for Wireline and Fixed Wireless Service as of December 2015

DRAFT

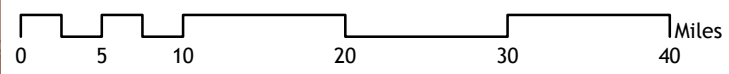
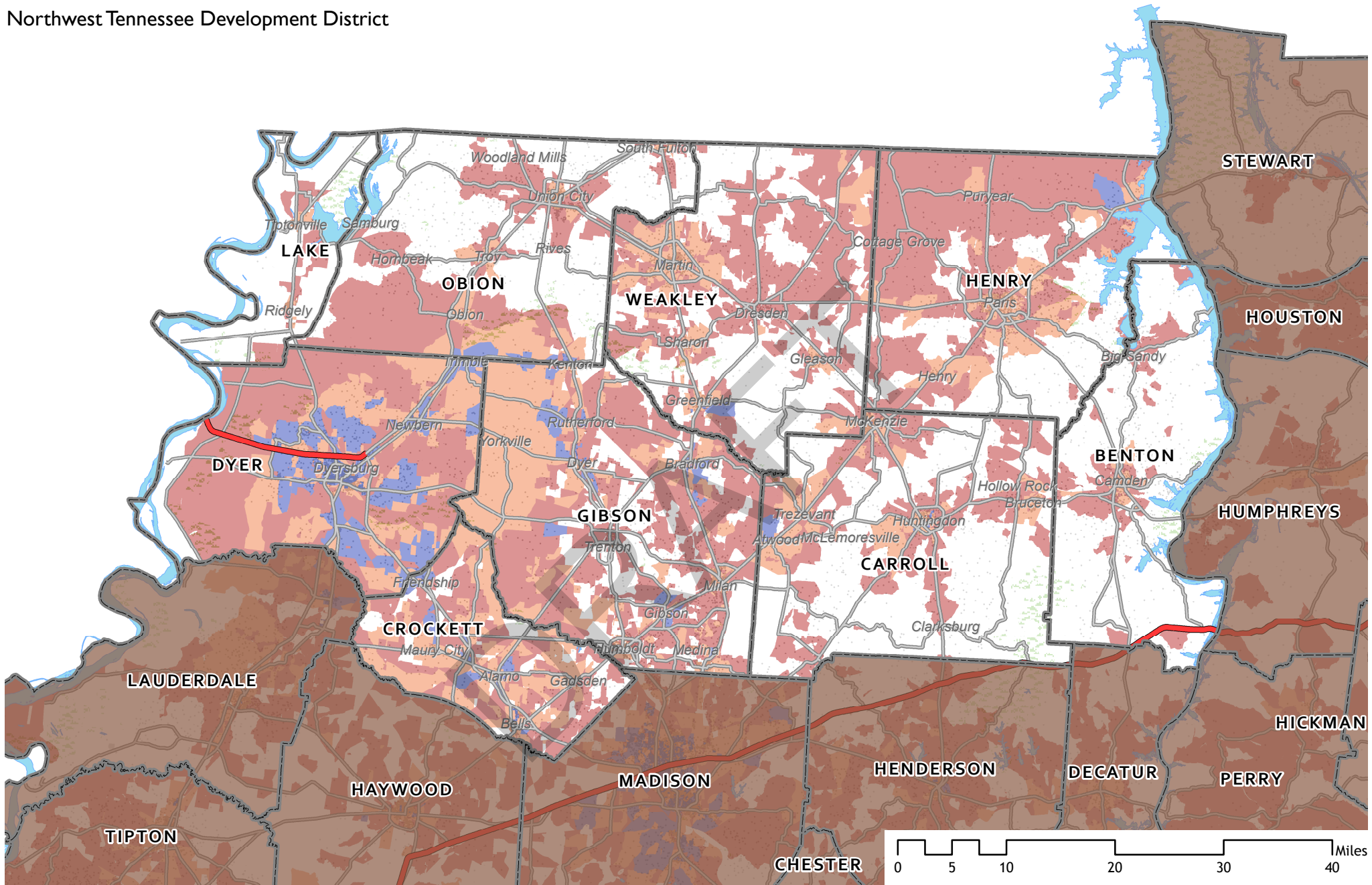


Availability of Download Speeds 10 Mbps and Faster *
Number of Providers:



* Includes services through Asymmetric or Symmetric xDSL, Cable Modem, Optical/Fiber-to-the-home, and Terrestrial Fixed Wireless. Fixed Broadband Deployment Data from FCC Form 477, December 31, 2015, as reported by providers at the census block level.

Northwest Tennessee Development District

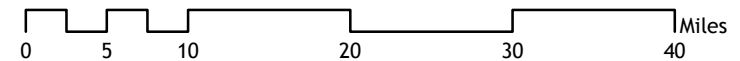
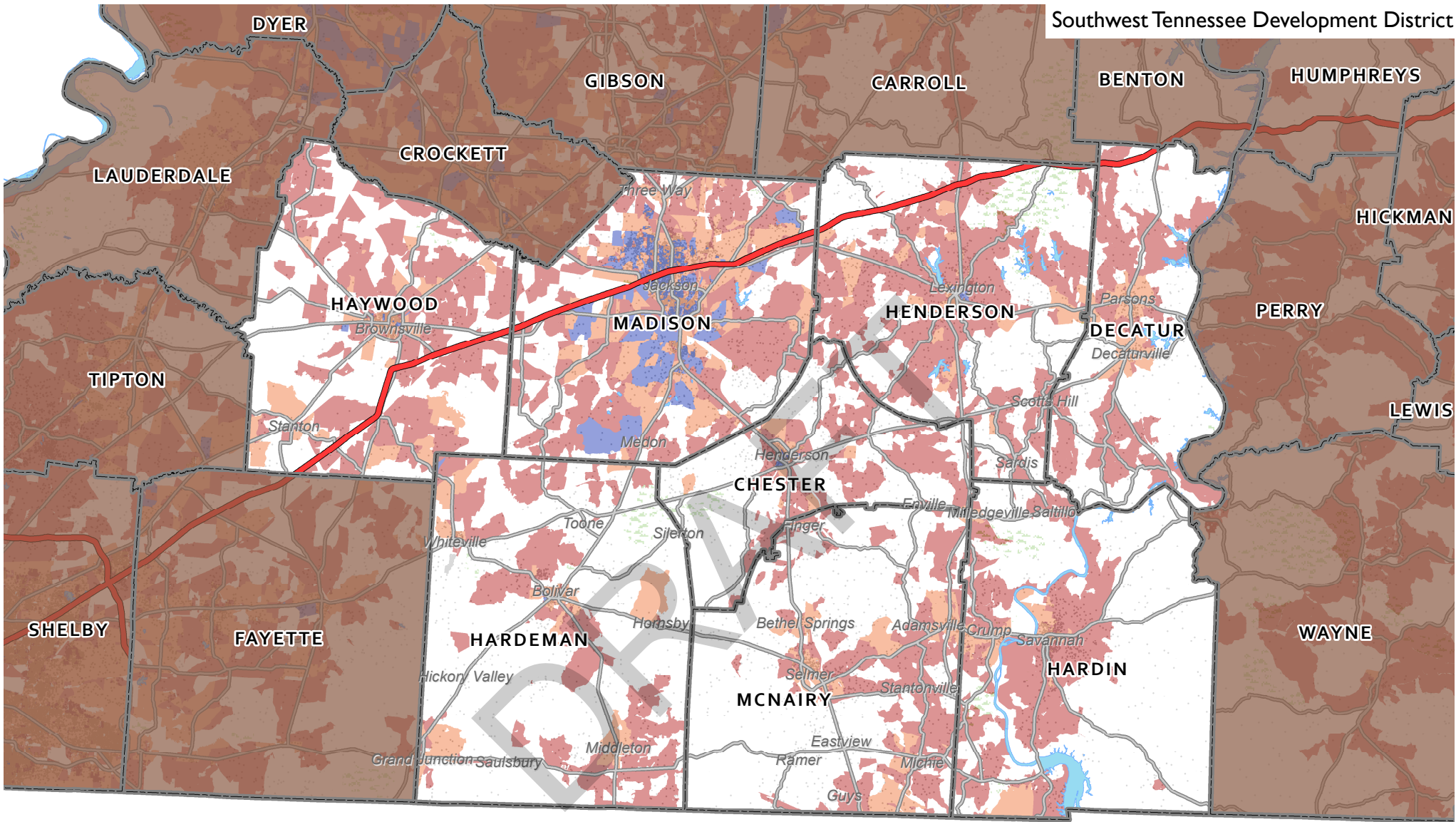


Availability of Download Speeds 10 Mbps and Faster * Number of Providers:

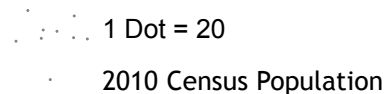
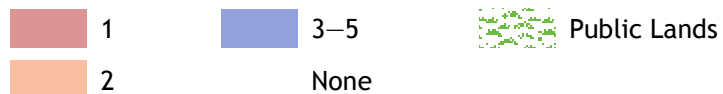


* Includes services through Asymmetric or Symmetric xDSL, Cable Modem, Optical/Fiber-to-the-home, and Terrestrial Fixed Wireless. Fixed Broadband Deployment Data from FCC Form 477, December 31, 2015, as reported by providers at the census block level.

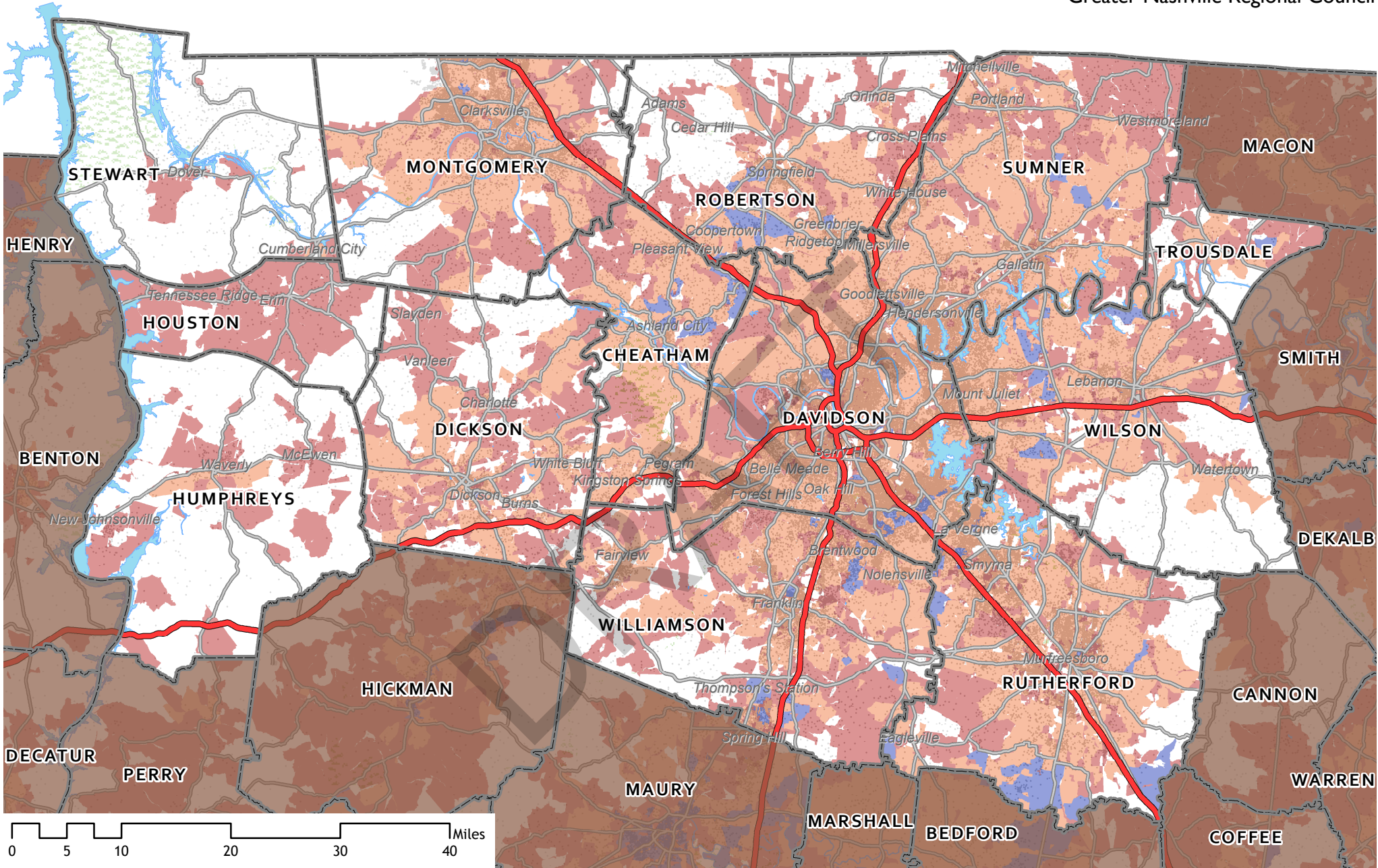
Scale = 1 : 750,000 N



**Availability of Download Speeds 10 Mbps and Faster *
Number of Providers:**



* Includes services through Asymmetric or Symmetric xDSL, Cable Modem, Optical/Fiber-to-the-home, and Terrestrial Fixed Wireless. Fixed Broadband Deployment Data from FCC Form 477, December 31, 2015, as reported by providers at the census block level.

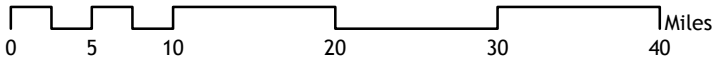
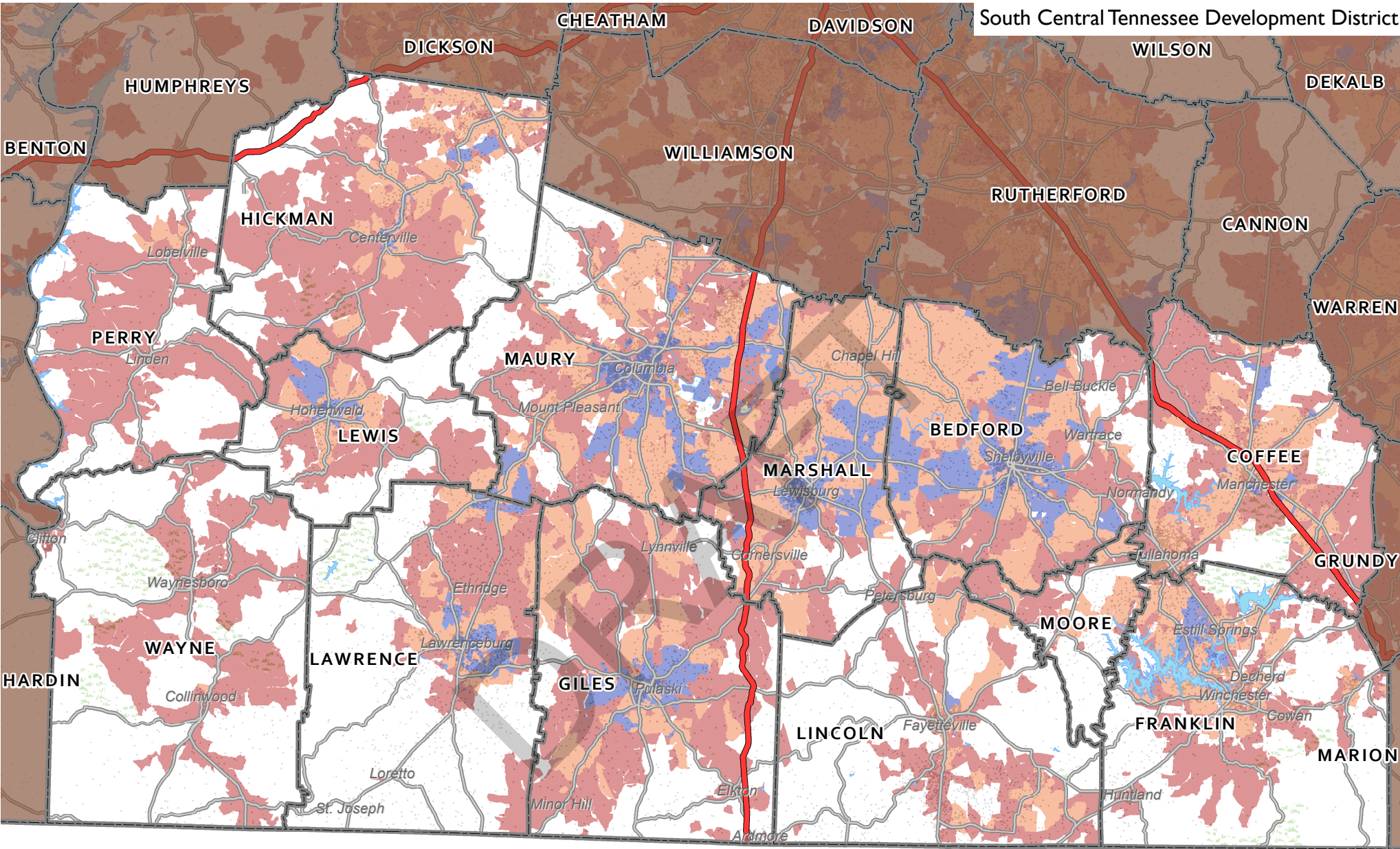


**Availability of Download Speeds 10 Mbps and Faster *
Number of Providers:**

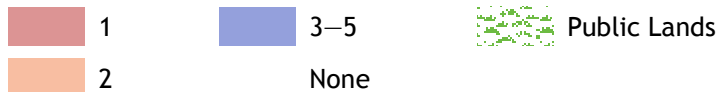
- 1
- 3-5
- Public Lands
- None



- 1 Dot = 20
- 2010 Census Population

* Includes services through Asymmetric or Symmetric xDSL, Cable Modem, Optical/Fiber-to-the-home, and Terrestrial Fixed Wireless. Fixed Broadband Deployment Data from FCC Form 477, December 31, 2015, as reported by providers at the census block level.

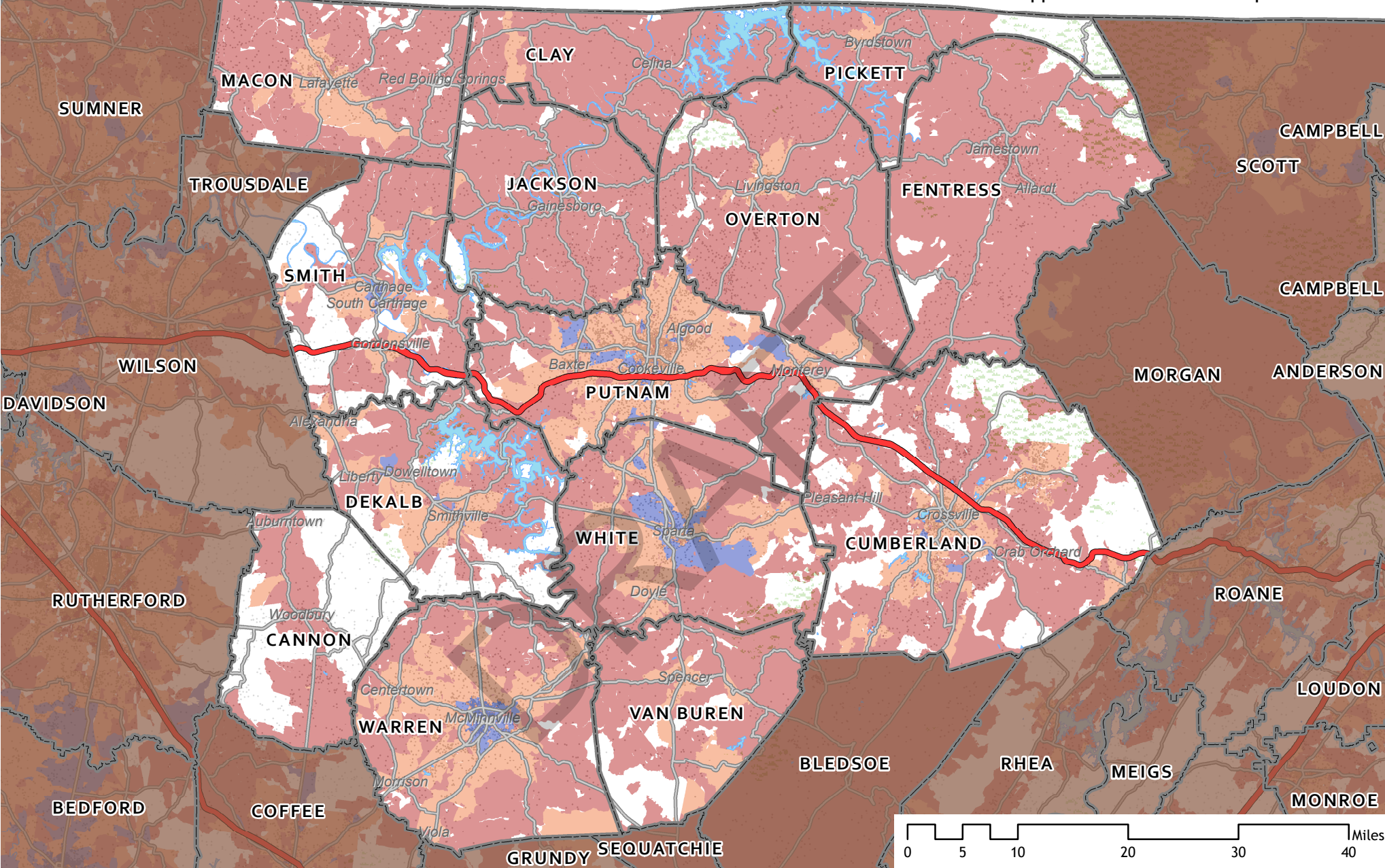


Availability of Download Speeds 10 Mbps and Faster *
Number of Providers:



 1 Dot = 20
 2010 Census Population

* Includes services through Asymmetric or Symmetric xDSL, Cable Modem, Optical/Fiber-to-the-home, and Terrestrial Fixed Wireless. Fixed Broadband Deployment Data from FCC Form 477, December 31, 2015, as reported by providers at the census block level.

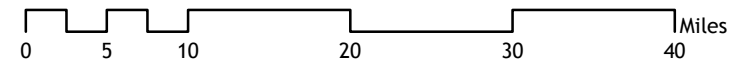
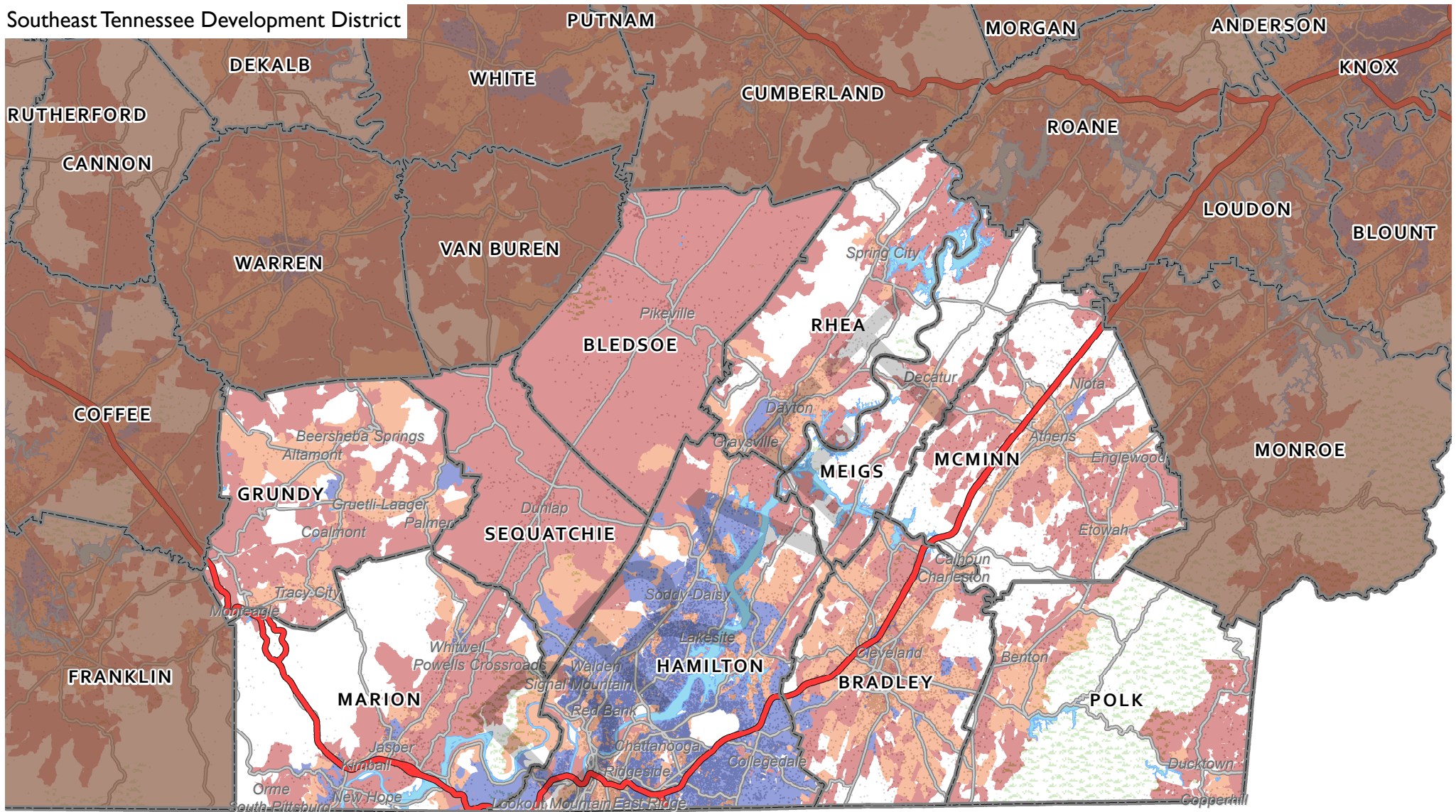


Availability of Download Speeds 10 Mbps and Faster *
Number of Providers:

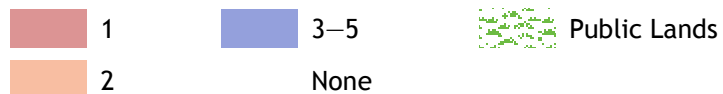
- 1
- 3-5
- Public Lands
- None



1 Dot = 20
 2010 Census Population

* Includes services through Asymmetric or Symmetric xDSL, Cable Modem, Optical/Fiber-to-the-home, and Terrestrial Fixed Wireless. Fixed Broadband Deployment Data from FCC Form 477, December 31, 2015, as reported by providers at the census block level.

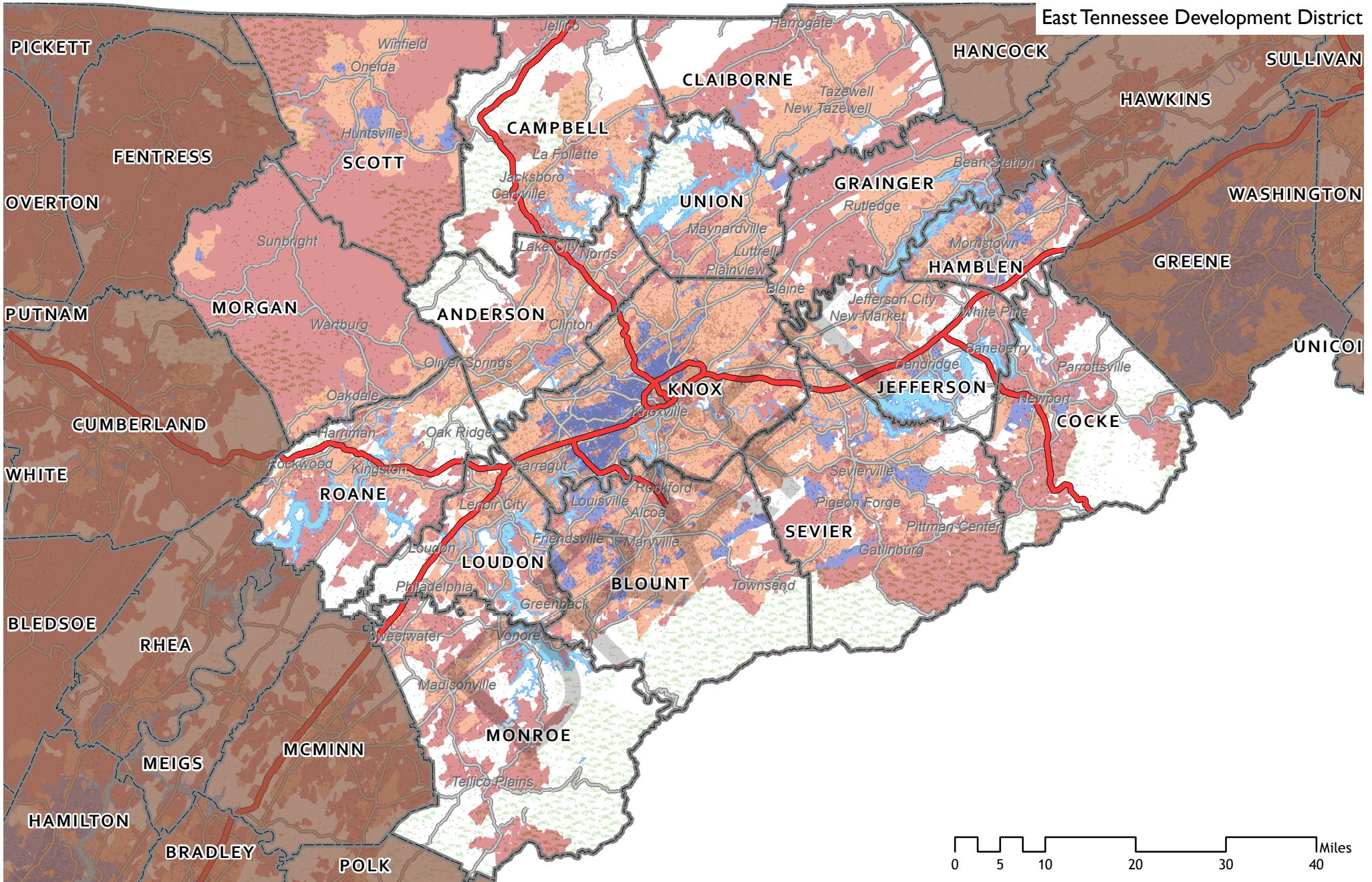


Availability of Download Speeds 10 Mbps and Faster *
Number of Providers:

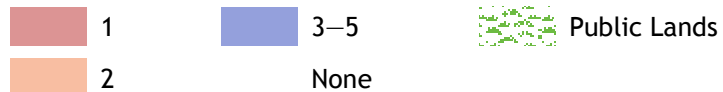



 1 Dot = 20
 2010 Census Population


* Includes services through Asymmetric or Symmetric xDSL, Cable Modem, Optical/Fiber-to-the-home, and Terrestrial Fixed Wireless. Fixed Broadband Deployment Data from FCC Form 477, December 31, 2015, as reported by providers at the census block level.



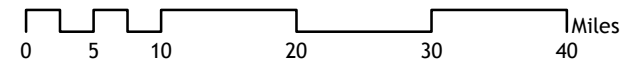
Availability of Download Speeds 10 Mbps and Faster *
Number of Providers:




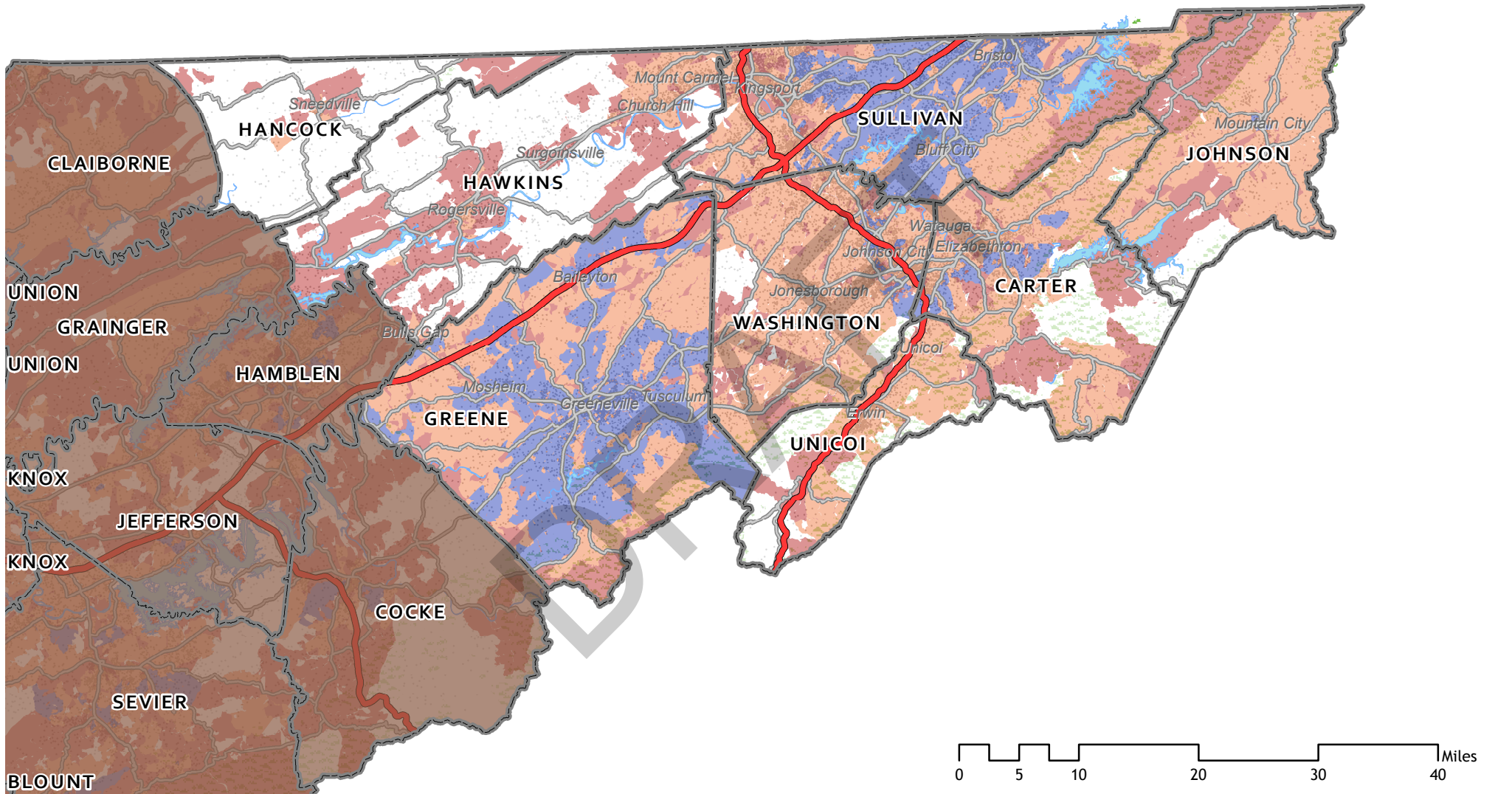
 1 Dot = 20

 2010 Census Population

* Includes services through Asymmetric or Symmetric xDSL, Cable Modem, Optical/Fiber-to-the-home, and Terrestrial Fixed Wireless. Fixed Broadband Deployment Data from FCC Form 477, December 31, 2015, as reported by providers at the census block level.



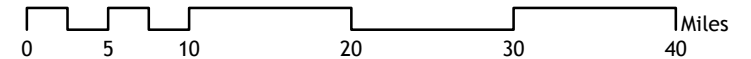
Scale = 1 : 900,000 



**Availability of Download Speeds 10 Mbps and Faster *
Number of Providers:**

- 1
- 3-5
- Public Lands
- 1 Dot = 20
- 2
- None
- 2010 Census Population

* Includes services through Asymmetric or Symmetric xDSL, Cable Modem, Optical/Fiber-to-the-home, and Terrestrial Fixed Wireless. Fixed Broadband Deployment Data from FCC Form 477, December 31, 2015, as reported by providers at the census block level.



Scale = 1 : 750,000 N