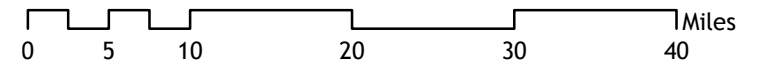
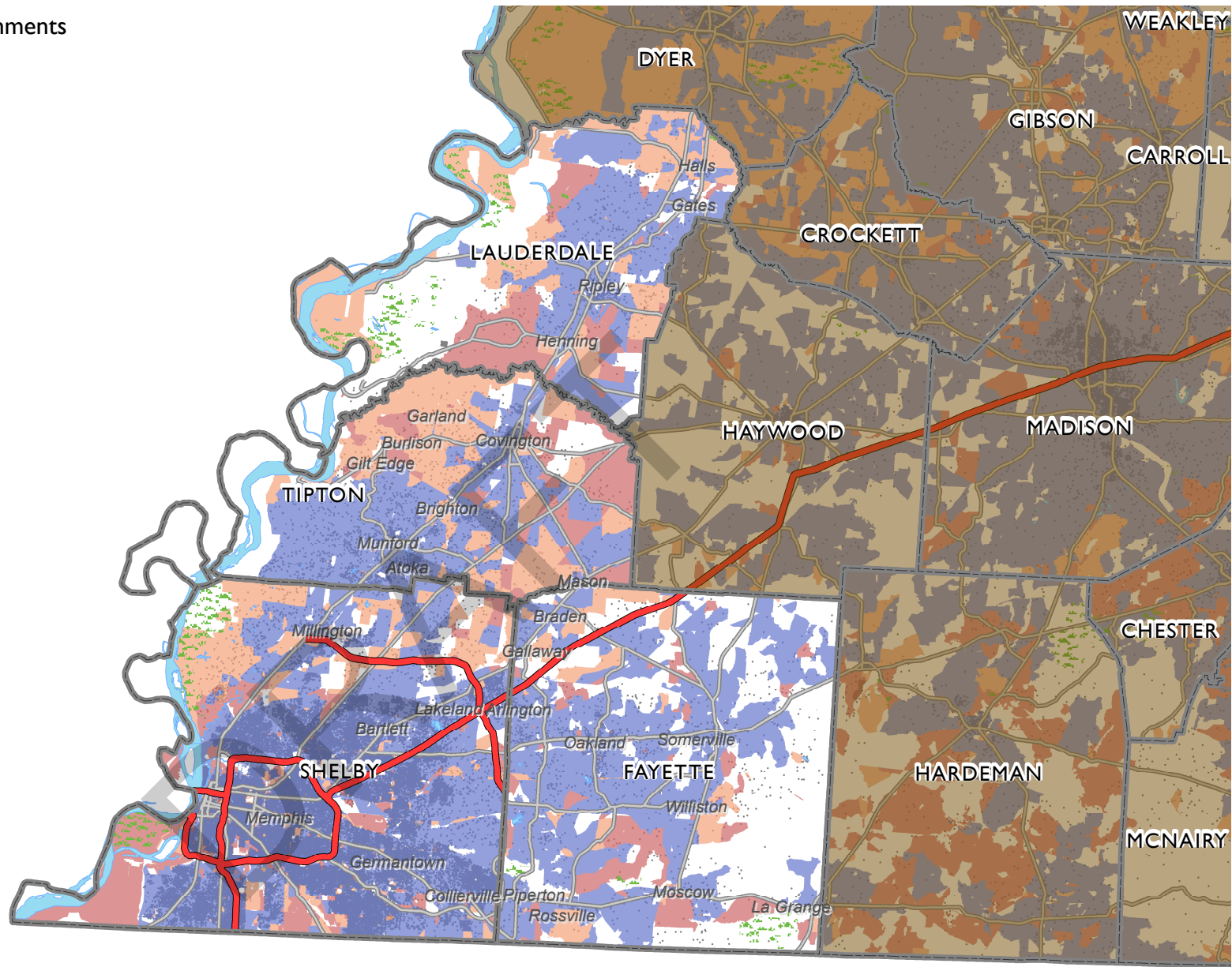


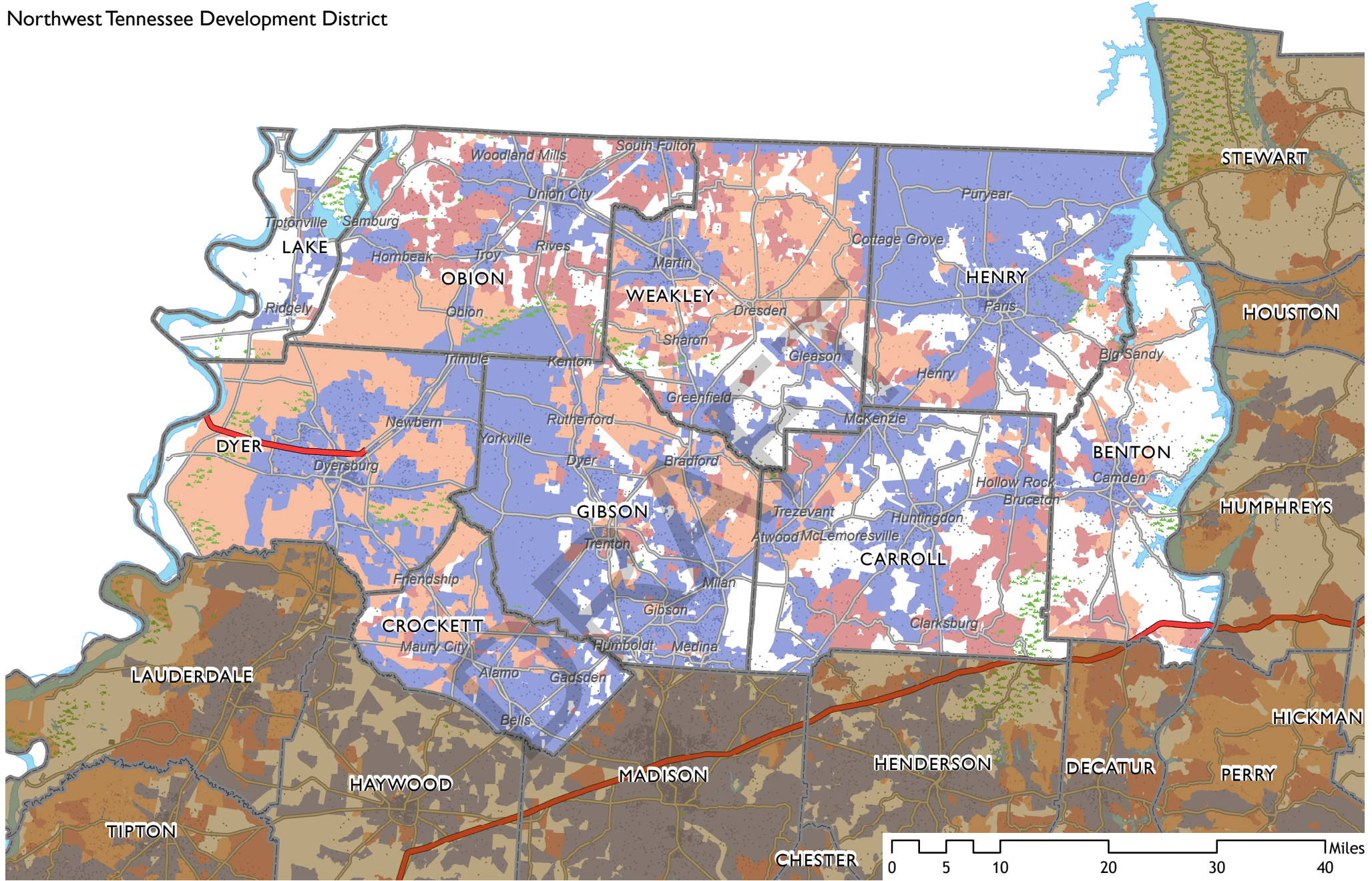
Appendix F: Maximum Advertised Download Capacities for Wired and Terrestrial Fixed Wireless Service as of December 2015

DRAFT



Maximum Advertised Download Speed *	Public Lands	Population Density	Scale = 1 : 750,000
Less Than 10 Mbps	Interstate Highways	1 Dot = 20	N
10 - 24 Mbps	State + Federal Highways	2010 Census Population	
25 Mbps and Faster	* Includes services through Asymmetric or Symmetric xDSL, Cable Modem, Optical/Fiber-to-the-home, and Terrestrial Fixed Wireless. Fixed Broadband Deployment Data from FCC Form 477, December 31, 2015, as reported by providers at the census block level.		

Northwest Tennessee Development District



Maximum Advertised Download Speed *

- Less Than 10 Mbps
- 10 - 24 Mbps
- 25 Mbps and Faster

Public Lands

- Interstate Highways
- State + Federal Highways

Population Density

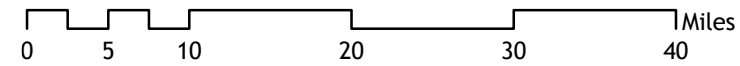
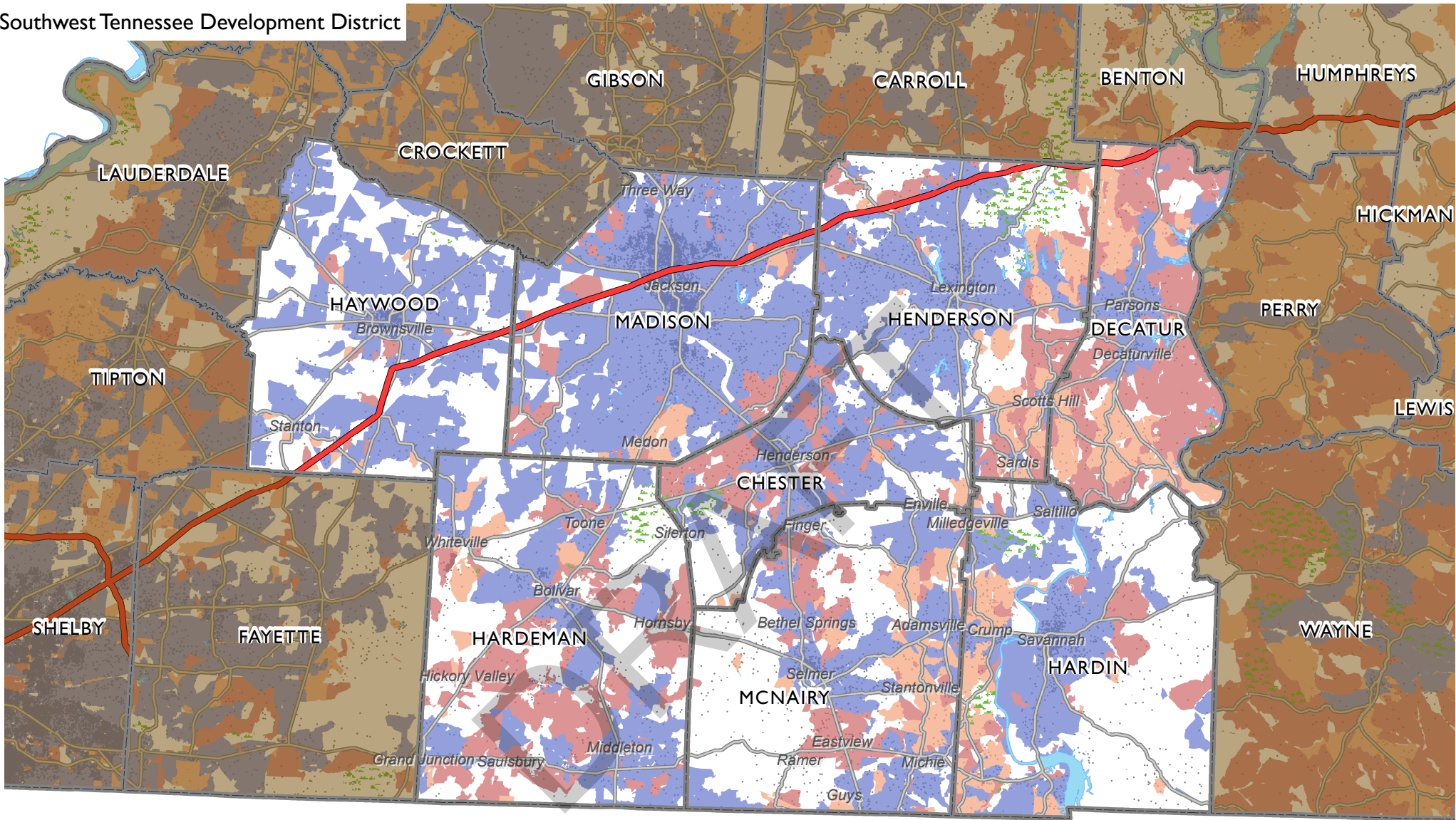
- 1 Dot = 20
- 2010 Census Population

Scale = 1 : 750,000

* Includes services through Asymmetric or Symmetric xDSL, Cable Modem, Optical/Fiber-to-the-home, and Terrestrial Fixed Wireless. Fixed Broadband Deployment Data from FCC Form 477, December 31, 2015, as reported by providers at the census block level.



Southwest Tennessee Development District



Maximum Advertised Download Speed *

- Less Than 10 Mbps
- 10 - 24 Mbps
- 25 Mbps and Faster

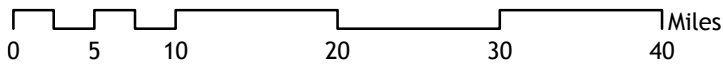
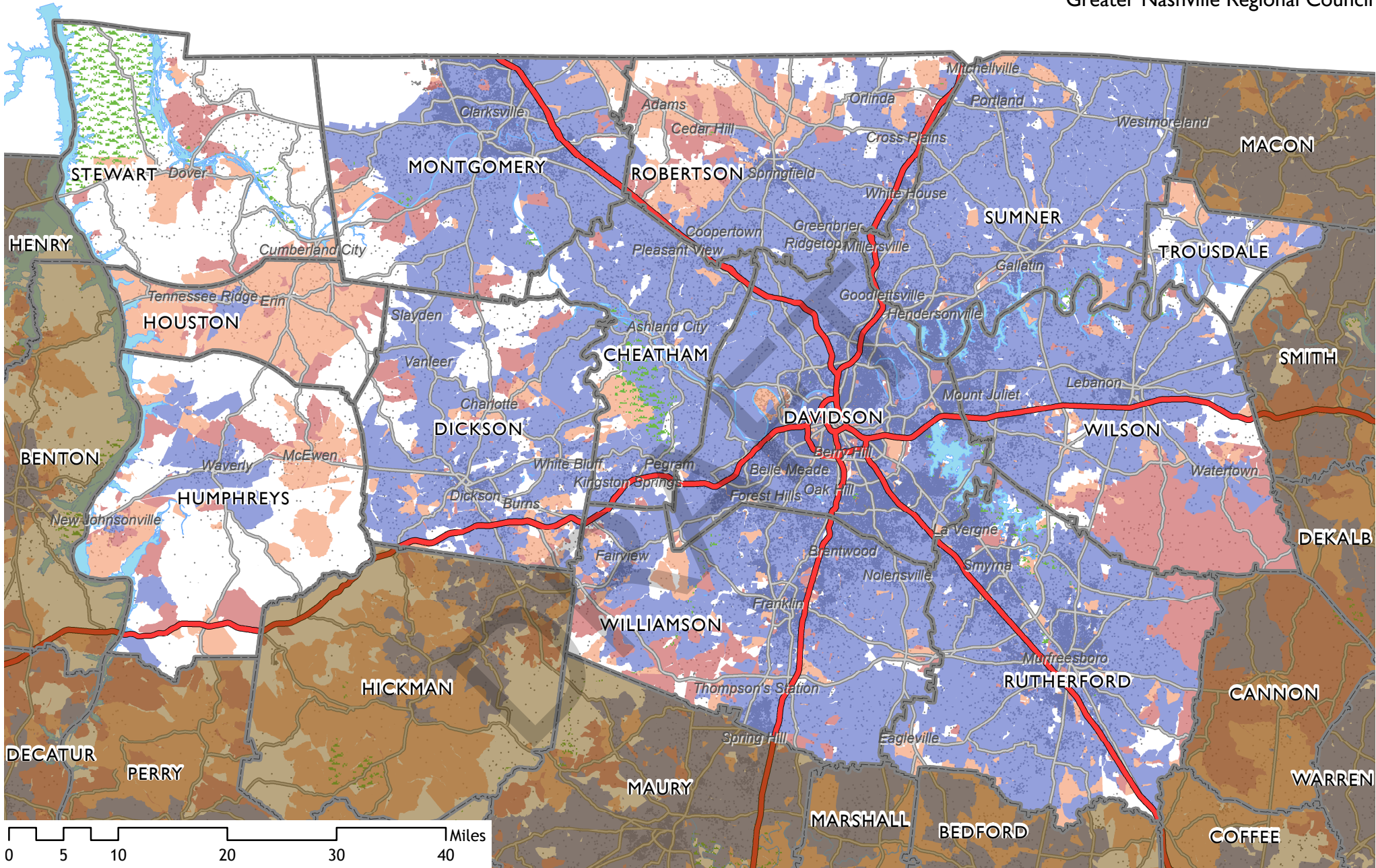
- Public Lands
- Interstate Highways
- State + Federal Highways

- Population Density
- 1 Dot = 20
- 2010 Census Population

Scale = 1 : 750,000

* Includes services through Asymmetric or Symmetric xDSL, Cable Modem, Optical/Fiber-to-the-home, and Terrestrial Fixed Wireless. Fixed Broadband Deployment Data from FCC Form 477, December 31, 2015, as reported by providers at the census block level.





Maximum Advertised Download Speed *

- Less Than 10 Mbps
- 10 - 24 Mbps
- 25 Mbps and Faster

Public Lands

- Public Lands
- Interstate Highways
- State + Federal Highways

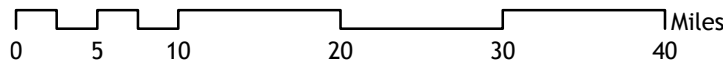
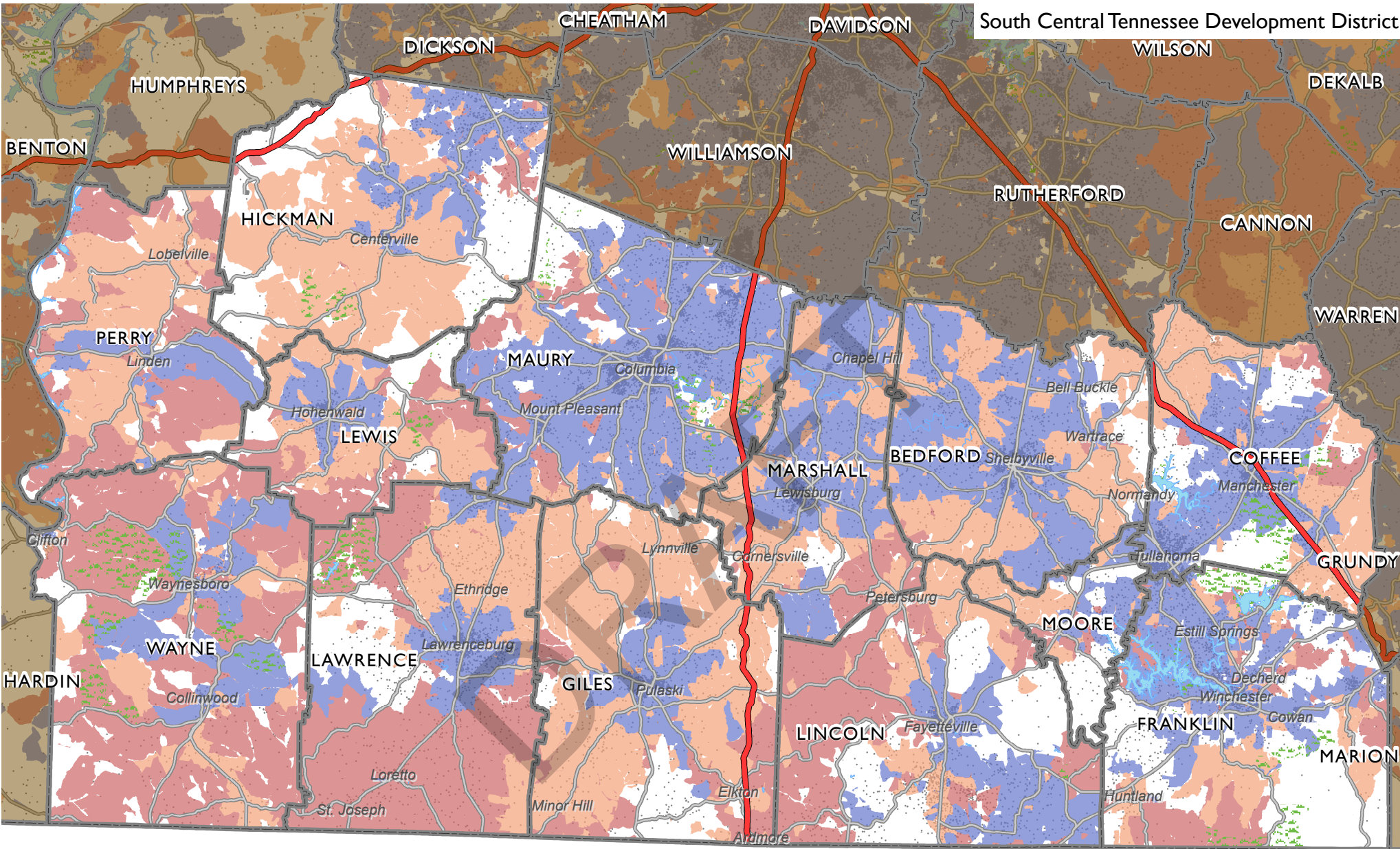
Population Density

- 1 Dot = 20
- 2010 Census Population

Scale = 1 : 750,000

* Includes services through Asymmetric or Symmetric xDSL, Cable Modem, Optical/Fiber-to-the-home, and Terrestrial Fixed Wireless. Fixed Broadband Deployment Data from FCC Form 477, December 31, 2015, as reported by providers at the census block level.





Maximum Advertised Download Speed *

- Less Than 10 Mbps
- 10 - 24 Mbps
- 25 Mbps and Faster

Public Lands

- Interstate Highways
- State + Federal Highways

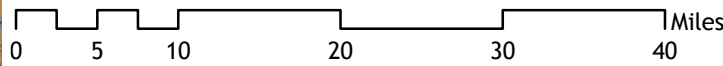
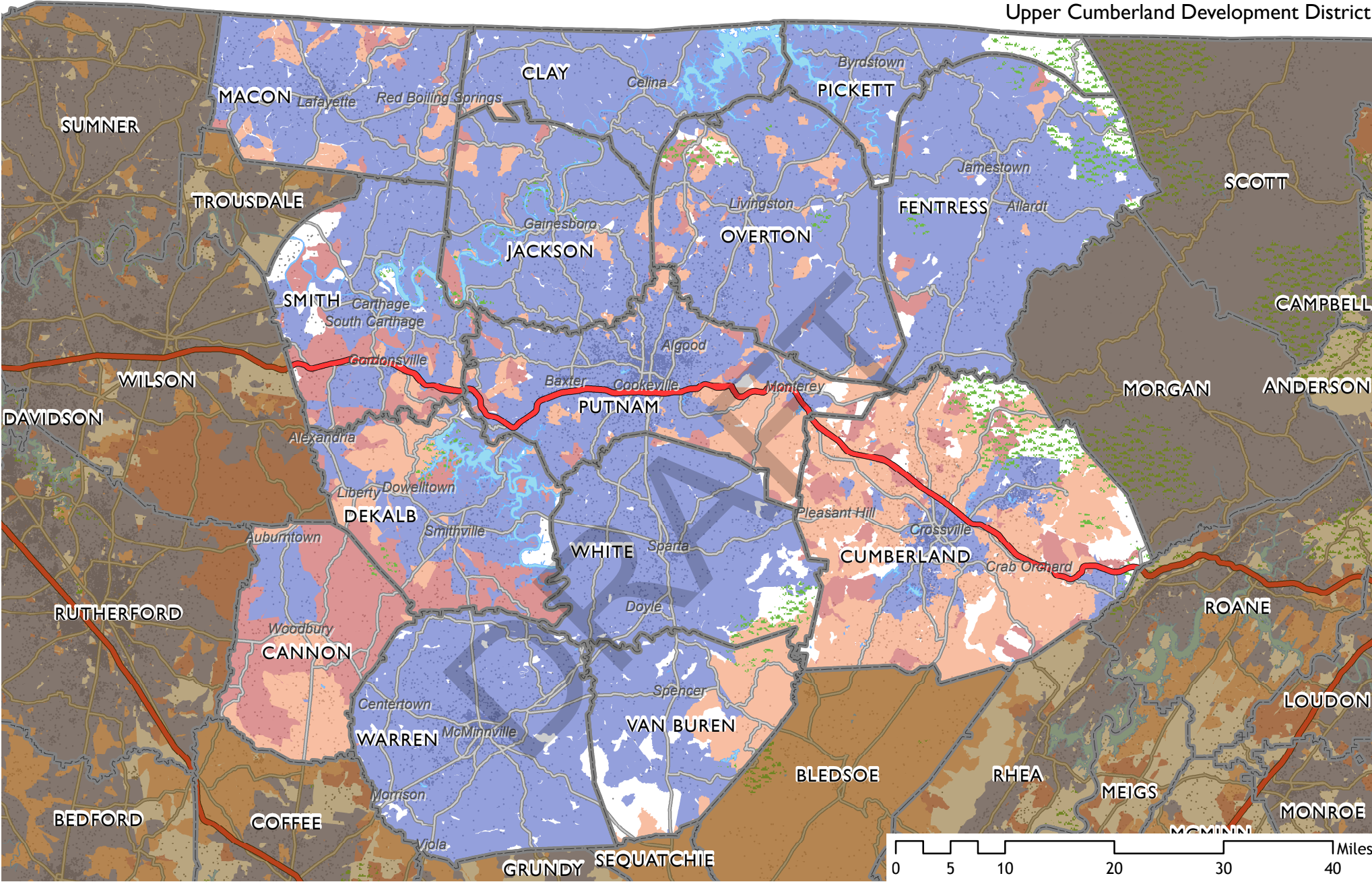
Population Density

- 1 Dot = 20
- 2010 Census Population

Scale = 1 : 750,000



* Includes services through Asymmetric or Symmetric xDSL, Cable Modem, Optical/Fiber-to-the-home, and Terrestrial Fixed Wireless. Fixed Broadband Deployment Data from FCC Form 477, December 31, 2015, as reported by providers at the census block level.



Maximum Advertised Download Speed *

- Less Than 10 Mbps
- 10 - 24 Mbps
- 25 Mbps and Faster

Public Lands

- Public Lands
- Interstate Highways
- State + Federal Highways

Population Density

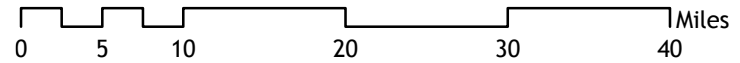
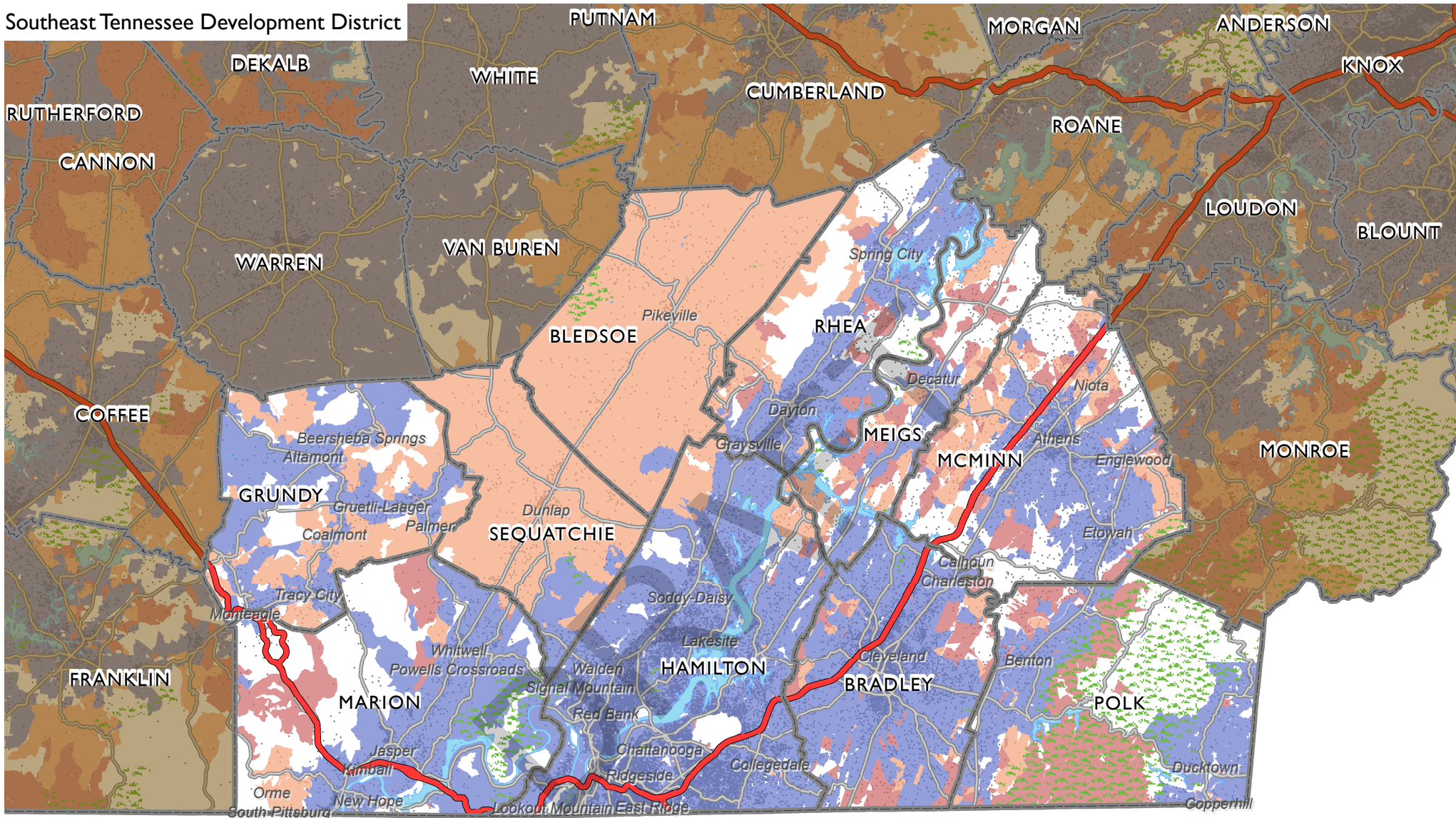
- 1 Dot = 20
- 2010 Census Population

Scale = 1 : 750,000

* Includes services through Asymmetric or Symmetric xDSL, Cable Modem, Optical/Fiber-to-the-home, and Terrestrial Fixed Wireless. Fixed Broadband Deployment Data from FCC Form 477, December 31, 2015, as reported by providers at the census block level.



Southeast Tennessee Development District



Maximum Advertised Download Speed *

- Less Than 10 Mbps
- 10 - 24 Mbps
- 25 Mbps and Faster

Public Lands

- Interstate Highways
- State + Federal Highways

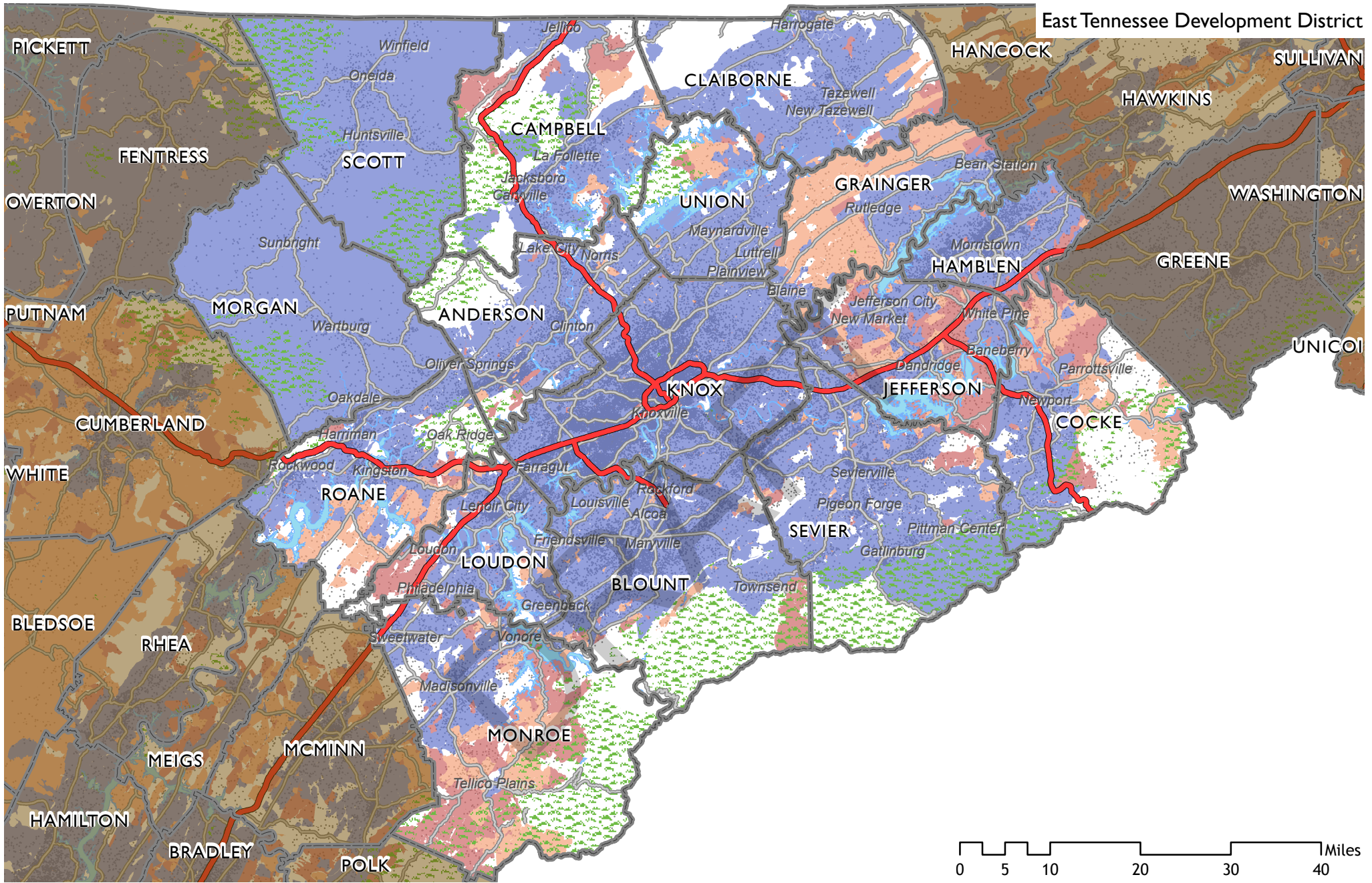
Population Density

- 1 Dot = 20
- 2010 Census Population

Scale = 1 : 750,000

* Includes services through Asymmetric or Symmetric xDSL, Cable Modem, Optical/Fiber-to-the-home, and Terrestrial Fixed Wireless. Fixed Broadband Deployment Data from FCC Form 477, December 31, 2015, as reported by providers at the census block level.





Maximum Advertised Download Speed *

- Less Than 10 Mbps
- 10 - 24 Mbps
- 25 Mbps and Faster

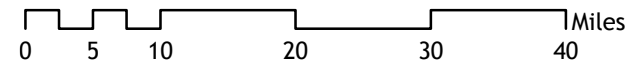
Public Lands

- Interstate Highways
- State + Federal Highways

Population Density

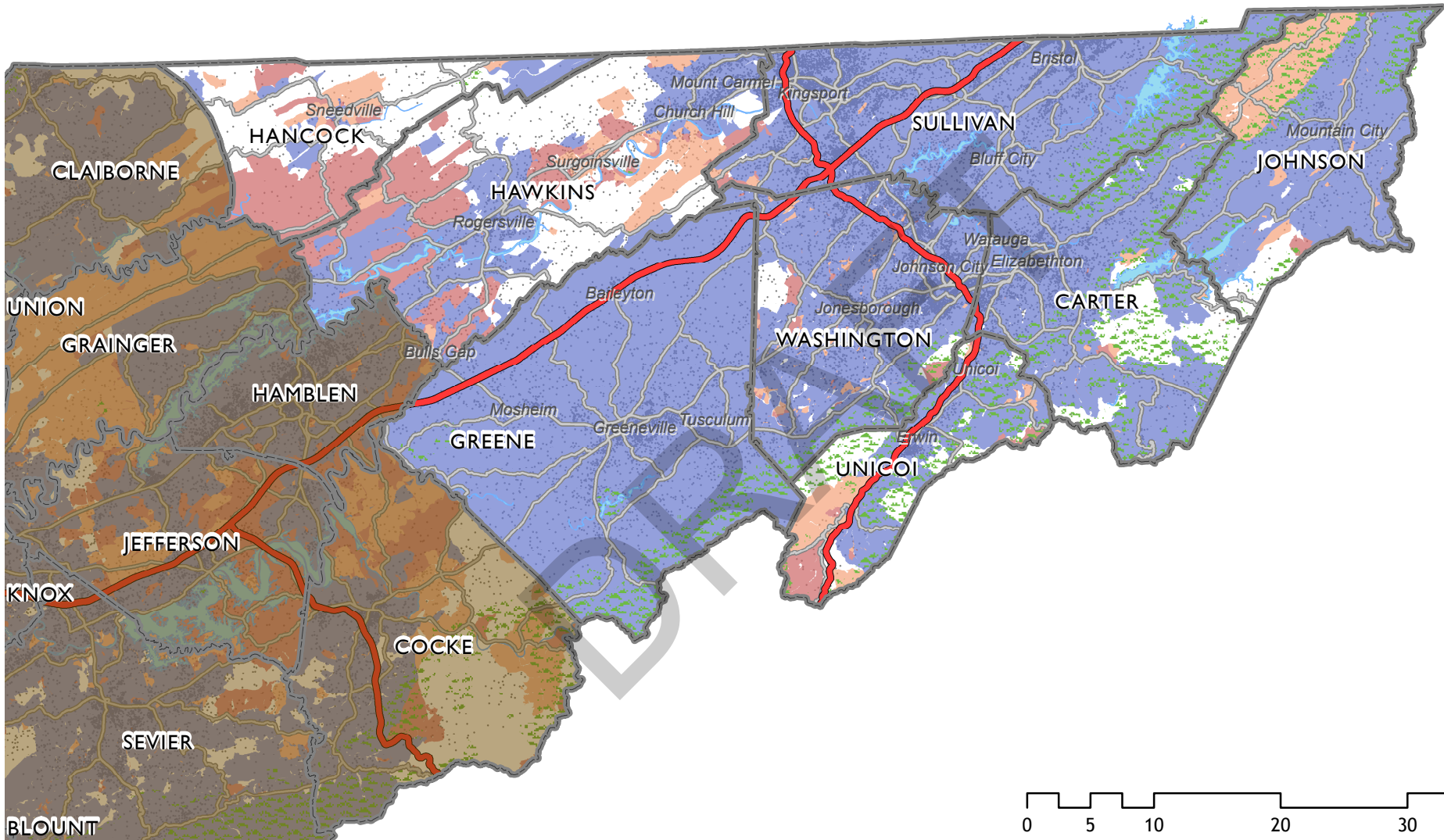
- 1 Dot = 20
- 2010 Census Population

Scale = 1 : 900,000



* Includes services through Asymmetric or Symmetric xDSL, Cable Modem, Optical/Fiber-to-the-home, and Terrestrial Fixed Wireless. Fixed Broadband Deployment Data from FCC Form 477, December 31, 2015, as reported by providers at the census block level.





Maximum Advertised Download Speed *

- Less Than 10 Mbps
- 10 - 24 Mbps
- 25 Mbps and Faster

Public Lands

Interstate Highways

State + Federal Highways

Population Density

- 1 Dot = 20
- 2010 Census Population

Scale = 1 : 750,000

* Includes services through Asymmetric or Symmetric xDSL, Cable Modem, Optical/Fiber-to-the-home, and Terrestrial Fixed Wireless. Fixed Broadband Deployment Data from FCC Form 477, December 31, 2015, as reported by providers at the census block level.

