

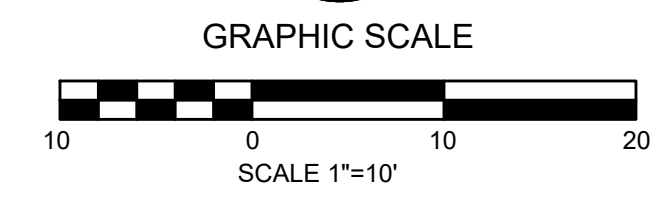
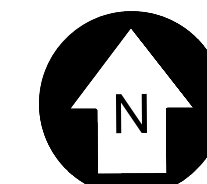
| REV | DATE | DESCRIPTION |
|-----|------|-------------|
|     |      |             |

**Forked Deer River Park Bathroom Facility**  
 CITY OF DYERSBURG

|             |     |
|-------------|-----|
| DRAWN BY    | MW  |
| DESIGNED BY | BT  |
| CHECKED BY  | SSR |

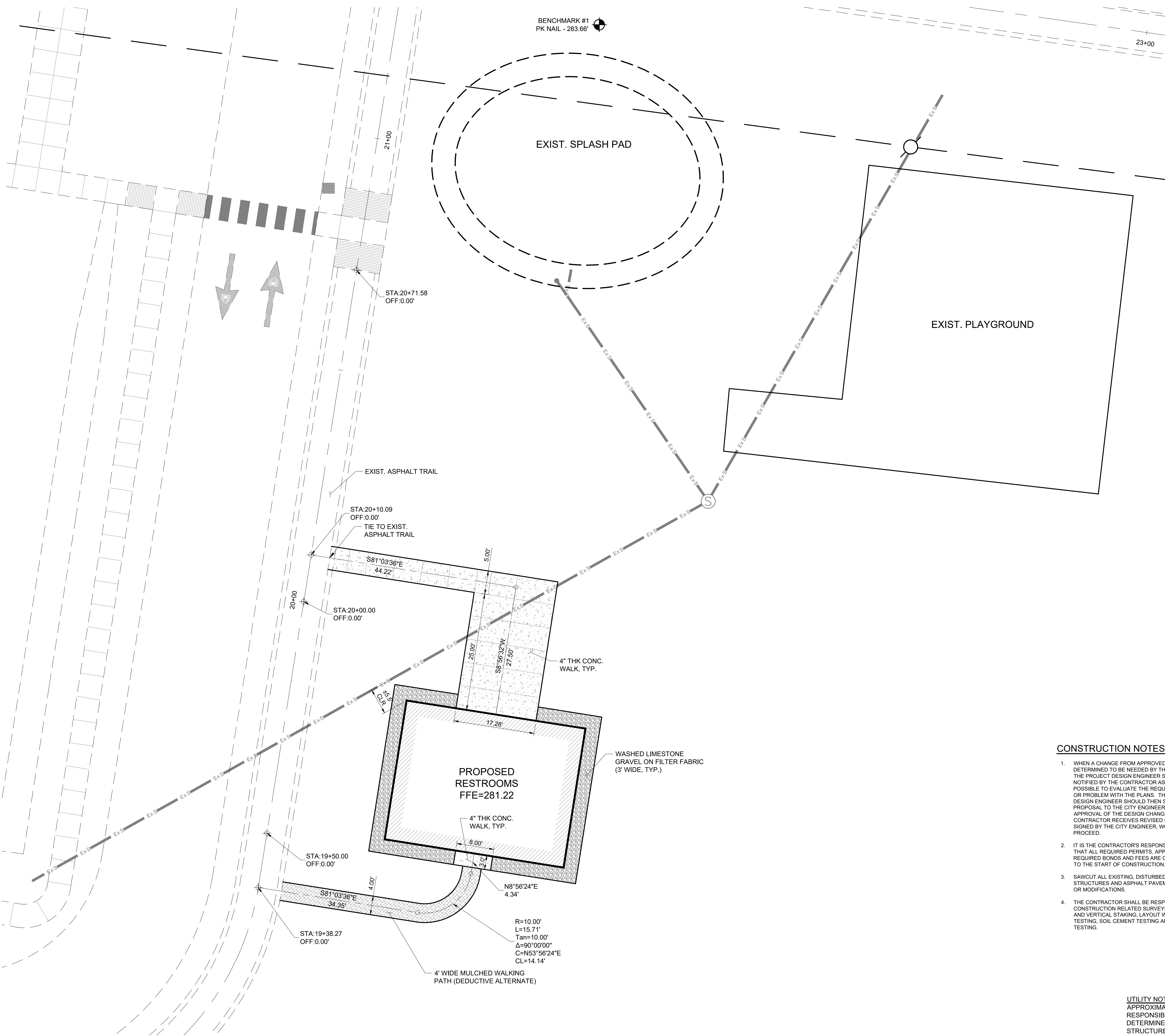
SHEET TITLE  
**SITE LAYOUT PLAN**

|                |             |
|----------------|-------------|
| DATE           | 05/01/2024  |
| PROJECT STATUS | CD          |
| SHEET NUMBER   | <b>C2.0</b> |



**LEGEND**

|  |                       |   |       |
|--|-----------------------|---|-------|
|  | PROPOSED SIDEWALK     | 1 | 28.0' |
|  | PROPOSED GRAVEL TRAIL | 2 | 28.0' |

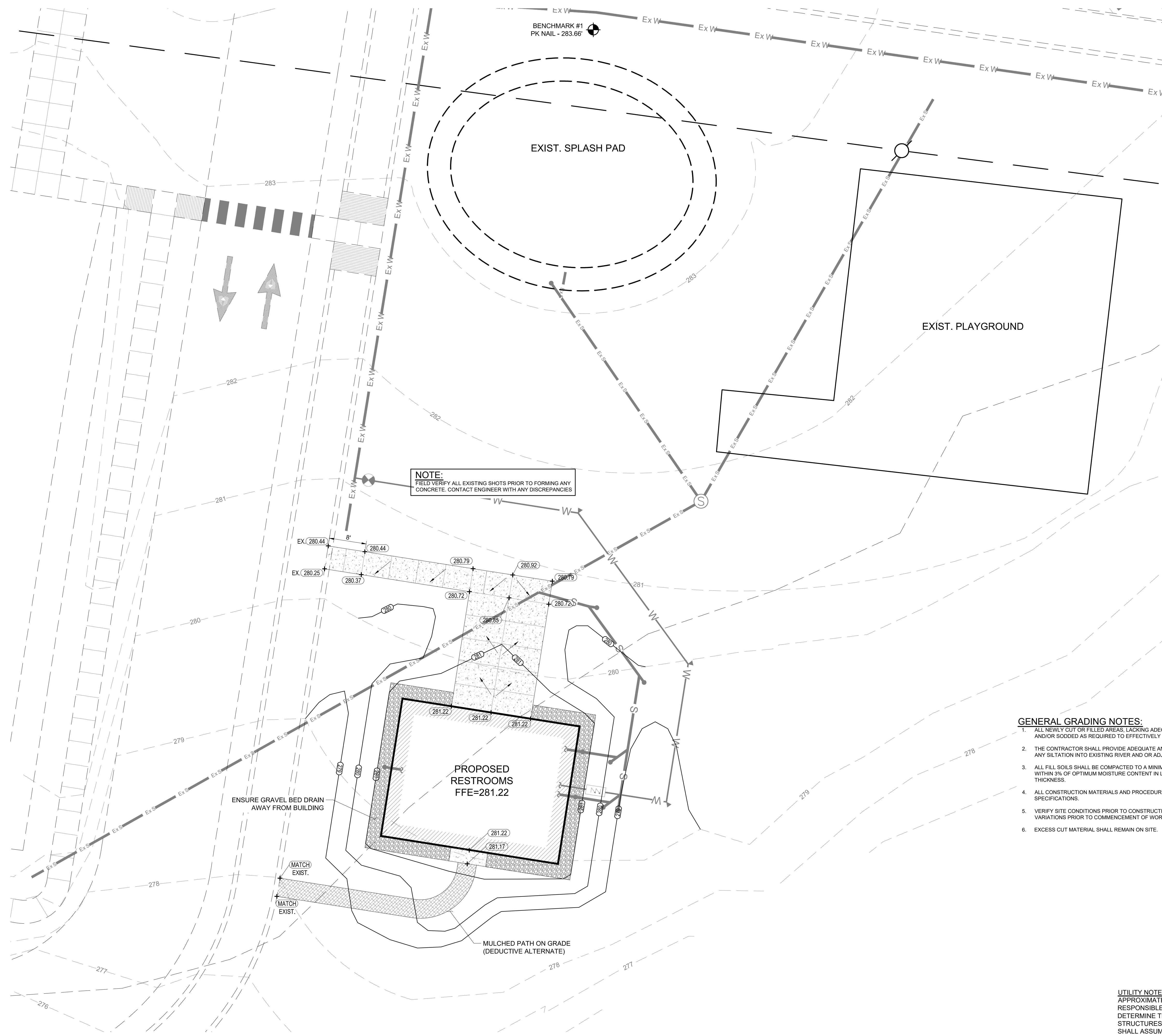


**CONSTRUCTION NOTES:**

- WHEN A CHANGE FROM APPROVED DESIGN IS DETERMINED TO BE NEEDED BY THE CONTRACTOR, THE PROJECT DESIGN ENGINEER SHOULD BE NOTIFIED BY THE CONTRACTOR AS SOON AS POSSIBLE TO EVALUATE THE REQUESTED CHANGE OR PROBLEM WITH THE PLANS. THE PROJECT DESIGN ENGINEER SHOULD THEN SUBMIT A PROPOSAL TO THE CITY ENGINEER FOR REVIEW AND APPROVAL OF THE DESIGN CHANGE. AFTER THE CONTRACTOR RECEIVES REVISED DRAWINGS SIGNED BY THE CITY ENGINEER, WORK MAY PROCEED.
- IT IS THE CONTRACTOR'S RESPONSIBILITY TO INSURE THAT ALL REQUIRED PERMITS, APPROVALS AND REQUIRED BONDS AND FEES ARE OBTAINED PRIOR TO THE START OF CONSTRUCTION.
- SAWCUT ALL EXISTING, DISTURBED CONCRETE STRUCTURES AND ASPHALT PAVEMENT FOR TIE-INS OR MODIFICATIONS.
- THE CONTRACTOR SHALL BE RESPONSIBLE FOR ALL CONSTRUCTION RELATED SURVEYING, HORIZONTAL AND VERTICAL STAKING, LAYOUT WORK, SOIL TESTING, SOIL CEMENT TESTING AND CONCRETE TESTING.
- ANY EXISTING UTILITIES REQUIRING RELOCATION OR REMOVAL SHALL BE THE CONTRACTOR'S RESPONSIBILITY.
- THE CONTRACTOR SHALL MAINTAIN ACCESS TO ALL PROPERTIES.
- CONTRACTOR SHALL NOTIFY THE CITY OF DYERSBURG ENGINEERING OFFICE A MINIMUM OF 24 HOURS PRIOR TO BEGINNING ANY CONSTRUCTION.
- THE CONTRACTOR SHALL VERIFY EXISTING DATA AND REPORT ANY SIGNIFICANT DISCREPANCIES TO THE ENGINEER.
- THE CONTRACTOR SHALL BE RESPONSIBLE FOR VERIFICATION OF ALL DIMENSIONS ON DRAWINGS AS IT RELATES TO THEIR WORK PRIOR TO START OF CONSTRUCTION.
- SURVEY WAS PROVIDED TO THE DESIGNER BY OTHERS. THEREFORE THE CONTRACTOR SHALL FIELD VERIFY THE LOCATIONS AND ELEVATIONS OF SITE FEATURES BASED ON THE CONTRACTORS HORIZONTAL AND VERTICAL CONTROLS. ANY DISCREPANCIES SHALL BE BROUGHT TO THE ATTENTION OF THE ENGINEER IMMEDIATELY. ANY DAMAGE OR REWORK CAUSED BY POSSIBLE DISCREPANCIES WILL BE SOLELY THE RESPONSIBILITY OF THE CONTRACTOR.

**UTILITY NOTE:** LOCATION OF EXISTING UNDERGROUND UTILITIES ARE APPROXIMATE AND NOT NECESSARILY THE SAME. THE CONTRACTOR SHALL BE RESPONSIBLE FOR CONTACTING THE APPROPRIATE UTILITY COMPANY TO DETERMINE THE EXACT LOCATION OF ALL UTILITIES AND UNDERGROUND STRUCTURES PRIOR TO THE INITIATION OF ANY CONSTRUCTION. CONTRACTOR SHALL ASSUME FULL RESPONSIBILITY FOR DAMAGE TO ANY UTILITIES ENCOUNTERED WITHIN CONSTRUCTION LIMITS. CALL 811 FOR UTILITY LOCATIONS.

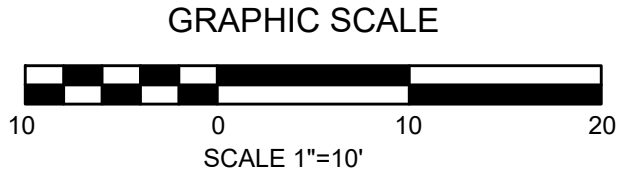
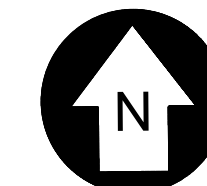
C:\Users\scrawford\Documents\SSR\_STRUCT\_22640410\_R23\_terawford@ssr-inc.com.rvt 1/8/2024 1:32:59 PM



**NOTE:**  
FIELD VERIFY ALL EXISTING SHOTS PRIOR TO FORMING ANY CONCRETE. CONTACT ENGINEER WITH ANY DISCREPANCIES

- GENERAL GRADING NOTES:**
1. ALL NEWLY CUT OR FILLED AREAS, LACKING ADEQUATE VEGETATION, SHALL BE SEEDDED, MULCHED, FERTILIZED AND/OR SODDED AS REQUIRED TO EFFECTIVELY CONTROL SOIL EROSION.
  2. THE CONTRACTOR SHALL PROVIDE ADEQUATE AND EFFECTIVE EROSION CONTROL AS NECESSARY TO PREVENT ANY SILTATION INTO EXISTING RIVER AND OR ADJACENT PROPERTIES.
  3. ALL FILL SOILS SHALL BE COMPACTED TO A MINIMUM OF 95% OF STANDARD PROCTOR DENSITY (ASTM D-698) WITHIN 3% OF OPTIMUM MOISTURE CONTENT IN LIFTS NOT TO EXCEED SIX (6) INCHES OF COMPACTED THICKNESS.
  4. ALL CONSTRUCTION MATERIALS AND PROCEDURES SHALL MEET OR EXCEED TDOT STANDARD CONSTRUCTION SPECIFICATIONS.
  5. VERIFY SITE CONDITIONS PRIOR TO CONSTRUCTION. NOTIFY THE CITY OF DYERSBURG ENGINEER OF ANY VARIATIONS PRIOR TO COMMENCEMENT OF WORK.
  6. EXCESS CUT MATERIAL SHALL REMAIN ON SITE.

**UTILITY NOTE:** LOCATION OF EXISTING UNDERGROUND UTILITIES ARE APPROXIMATE AND NOT NECESSARILY THE SAME. THE CONTRACTOR SHALL BE RESPONSIBLE FOR CONTACTING THE APPROPRIATE UTILITY COMPANY TO DETERMINE THE EXACT LOCATION OF ALL UTILITIES AND UNDERGROUND STRUCTURES PRIOR TO THE INITIATION OF ANY CONSTRUCTION. CONTRACTOR SHALL ASSUME FULL RESPONSIBILITY FOR DAMAGE TO ANY UTILITIES ENCOUNTERED WITHIN CONSTRUCTION LIMITS. CALL 811 FOR UTILITY LOCATIONS.

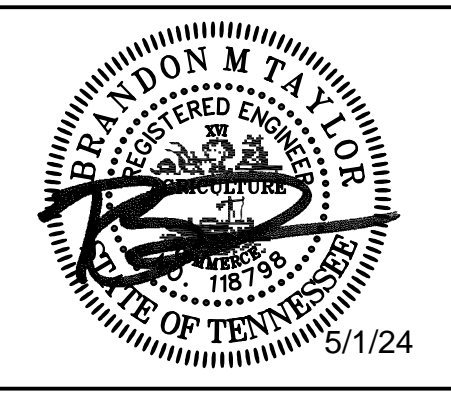


**LEGEND**

- - - - - EXISTING CONTOURS
- (E.S.) — PROPOSED CONTOURS

**SSR** Smith Seckman Reid, Inc.  
2650 Thousand Oaks Boulevard, Suite 4200  
Memphis, TN 38118  
(901) 683-3900  
FAX: (901) 683-3990  
www.ssr-inc.com  
SSR Project #: 22640410

**UrbanARCH** associates, pc  
498 SOUTH MAIN  
MEMPHIS, TENNESSEE 38103  
P 901.578.7173 / F 901.578.5223  
www.uarch.com



| REV | DATE | DESCRIPTION |
|-----|------|-------------|
|     |      |             |

**Forked Deer River Park Bathroom Facility**  
CITY OF DYERSBURG

|             |     |
|-------------|-----|
| DRAWN BY    | MW  |
| DESIGNED BY | BT  |
| CHECKED BY  | SSR |

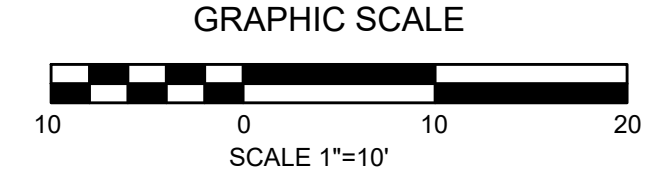
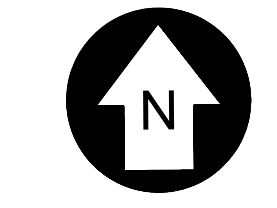
SHEET TITLE  
**GRADING & DRAINAGE PLAN**

|                |            |
|----------------|------------|
| DATE           | 05/01/2024 |
| PROJECT STATUS | CD         |
| SHEET NUMBER   | C3.0       |

Copyright © 2010 by Smith Seckman Reid, Inc. All rights reserved. This document

C:\Users\scrawford\Documents\SSR\_STRUCT\_22640410\_R23\_terawford@ssr-inc.com.rvt 1/8/2024 1:32:59 PM

BENCHMARK #1  
PK NAIL - 283.66'



**LEGEND**

--- TEMPORARY SILT-FENCE (3)  
C6.0

EXIST. SPLASH PAD

EXIST. PLAYGROUND

PROPOSED  
RESTROOMS  
FFE=281.22

SILT FENCE, TYP. SEE  
DETAIL ON SHEET C6.0

**NOTE:**  
ALL DISTURBED AREA IS TO SODDED

**EROSION CONTROL NOTES:**

1. THE EROSION AND SEDIMENT CONTROL MEASURES SHOWN ON PLAN IS TO SERVE AS A GUIDE ONLY AND IS NOT INTENDED TO SUPERSEDE OR RELIEVE THE CONTRACTOR OF ANY RESPONSIBILITY TOWARD COMPLIANCE WITH ALL FEDERAL, STATE, AND LOCAL EROSIONS CONTROL, REGULATIONS, OR RESPONSIBILITY OF PROPER INSTALLATION AND MAINTENANCE OF EROSION CONTROL DEVICES IN ACCORDANCE WITH THE CURRENT APPLICABLE GUIDELINES.
2. THE CONTRACTOR SHALL AT ALL TIMES EMPLOY ADEQUATE EROSION AND SEDIMENT CONTROL MEASURES. EROSION AND SEDIMENT CONTROL DEVICES SHALL BE INSTALLED AND MADE FUNCTIONAL PRIOR TO INCEPTION OF ANY UPSLOPE LAND DISTURBING ACTIVITY, AND SHALL BE PROPERLY MAINTAINED AND OPERATED UNTIL FINAL STABILIZATION IS ACHIEVED. THE CONTRACTOR IS RESPONSIBLE FOR KEEPING STREET CLEAR OF MUD AND DEBRIS, AND PREVENT DAMAGE TO THE PROPERTY, ADJACENT PROPERTIES, AND PUBLIC OR PRIVATE DRAINAGE SYSTEMS.
3. UNLESS OTHERWISE INDICATED, ALL EROSION AND SEDIMENT CONTROL PRACTICES WILL BE CONSTRUCTED AND MAINTAINED ACCORDING TO MINIMUM STANDARDS AND SPECIFICATIONS OF THE TENNESSEE EROSION AND SEDIMENT CONTROL HANDBOOK. ALL TEMPORARY EPSC MEASURES TO BE REMOVED ONCE SITE IS PERMANENTLY STABILIZED.

TEMPORARY CONSTRUCTION EXIT, 20' WIDE x 50' LONG PROVIDE TEMPORARY WATER FOR WASHDOWN OF VEHICLES LEAVING CONSTRUCTION SITE.

CONTRACTOR TO REPAIR / REPLACE SECTIONS (AS NEEDED) OF DAMAGED TRAIL AS A RESULT OF CONSTRUCTION, TYP.

**UTILITY NOTE:** LOCATION OF EXISTING UNDERGROUND UTILITIES ARE APPROXIMATE AND NOT NECESSARILY THE SAME. THE CONTRACTOR SHALL BE RESPONSIBLE FOR CONTACTING THE APPROPRIATE UTILITY COMPANY TO DETERMINE THE EXACT LOCATION OF ALL UTILITIES AND UNDERGROUND STRUCTURES PRIOR TO THE INITIATION OF ANY CONSTRUCTION. CONTRACTOR SHALL ASSUME FULL RESPONSIBILITY FOR DAMAGE TO ANY UTILITIES ENCOUNTERED WITHIN CONSTRUCTION LIMITS. CALL 811 FOR UTILITY LOCATIONS.

**SSR** Smith Seckman Reid, Inc.  
2650 Thousand Oaks Boulevard,  
Suite 4200  
Memphis, TN 38118  
(901) 683-3900  
FAX: (901) 683-3990  
www.ssr-inc.com  
SSR Project #: 22640410

**UrbanARCH**  
associates, pc  
498 SOUTH MAIN  
MEMPHIS, TENNESSEE 38103  
P 901.578.7173 / F 901.578.5223  
www.uarch.com



| REV | DATE | DESCRIPTION |
|-----|------|-------------|
|     |      |             |

Forked Deer River Park Bathroom Facility  
CITY OF DYERSBURG

|             |     |
|-------------|-----|
| DRAWN BY    | MW  |
| DESIGNED BY | BT  |
| CHECKED BY  | SSR |

SHEET TITLE  
**EROSION CONTROL PLAN**

|                |             |
|----------------|-------------|
| DATE           | 05/01/2024  |
| PROJECT STATUS | CD          |
| SHEET NUMBER   | <b>C4.0</b> |

Copyright © 2010 by Smith Seckman Reid, Inc. All rights reserved. This document



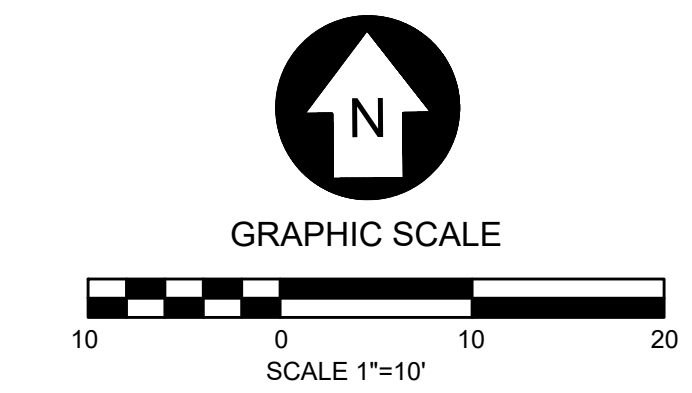
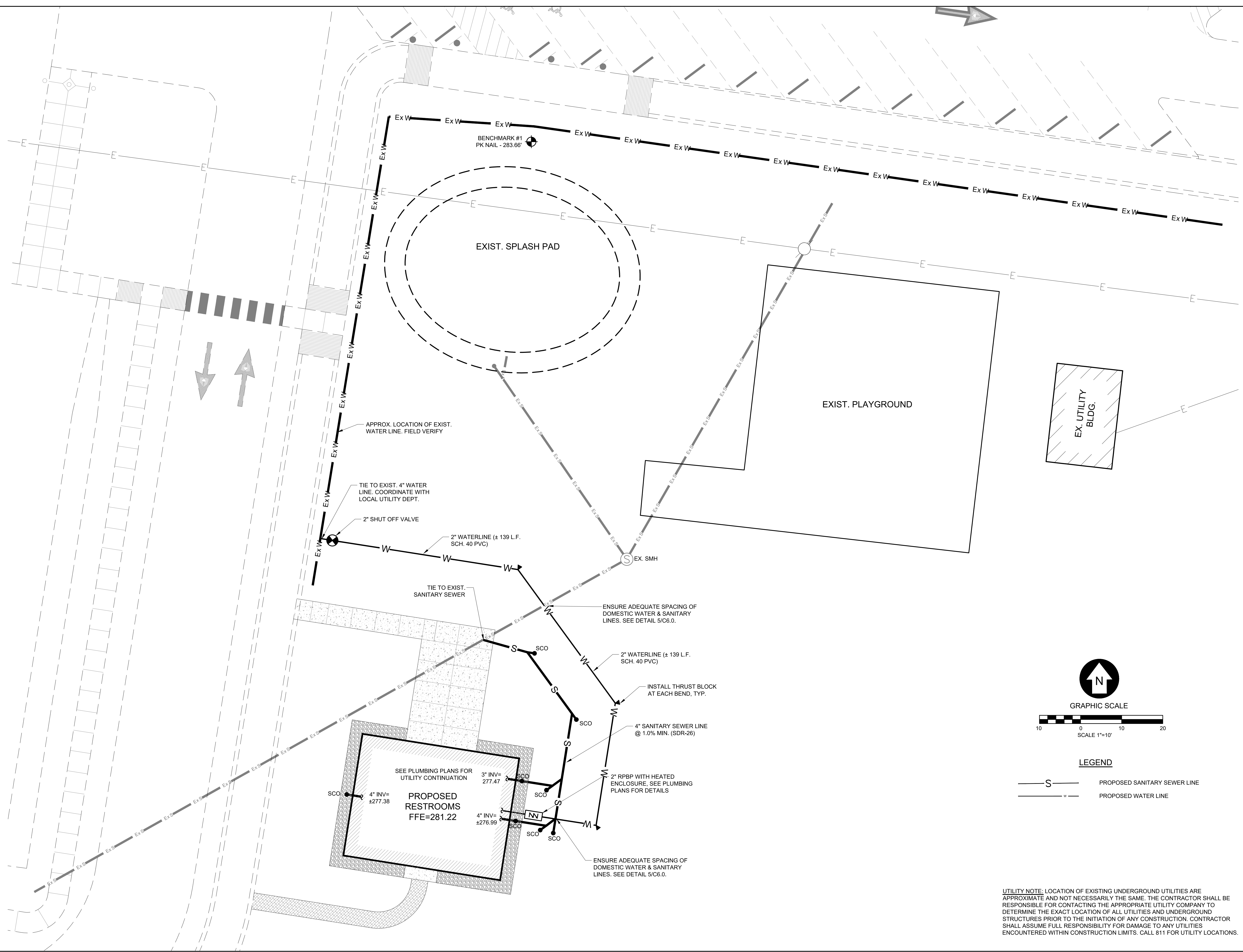
| REV | DATE | DESCRIPTION |
|-----|------|-------------|
|     |      |             |

**Forked Deer River Park Bathroom Facility**  
 CITY OF DYERSBURG

|             |     |
|-------------|-----|
| DRAWN BY    | MW  |
| DESIGNED BY | BT  |
| CHECKED BY  | SSR |

|             |              |
|-------------|--------------|
| SHEET TITLE | UTILITY PLAN |
|-------------|--------------|

|                |            |
|----------------|------------|
| DATE           | 05/01/2024 |
| PROJECT STATUS | CD         |
| SHEET NUMBER   | C5.0       |



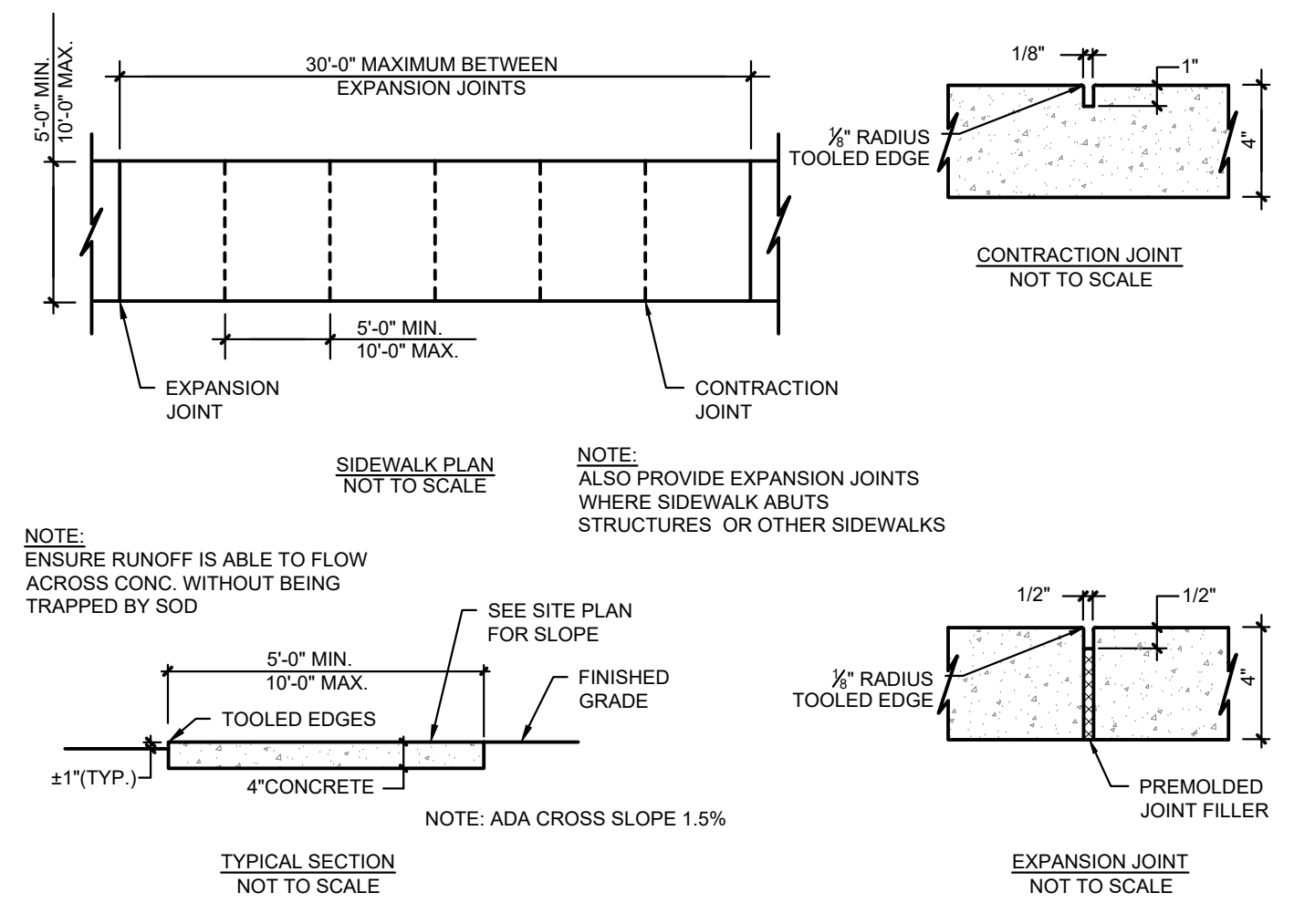
**LEGEND**

|  |                              |
|--|------------------------------|
|  | PROPOSED SANITARY SEWER LINE |
|  | PROPOSED WATER LINE          |

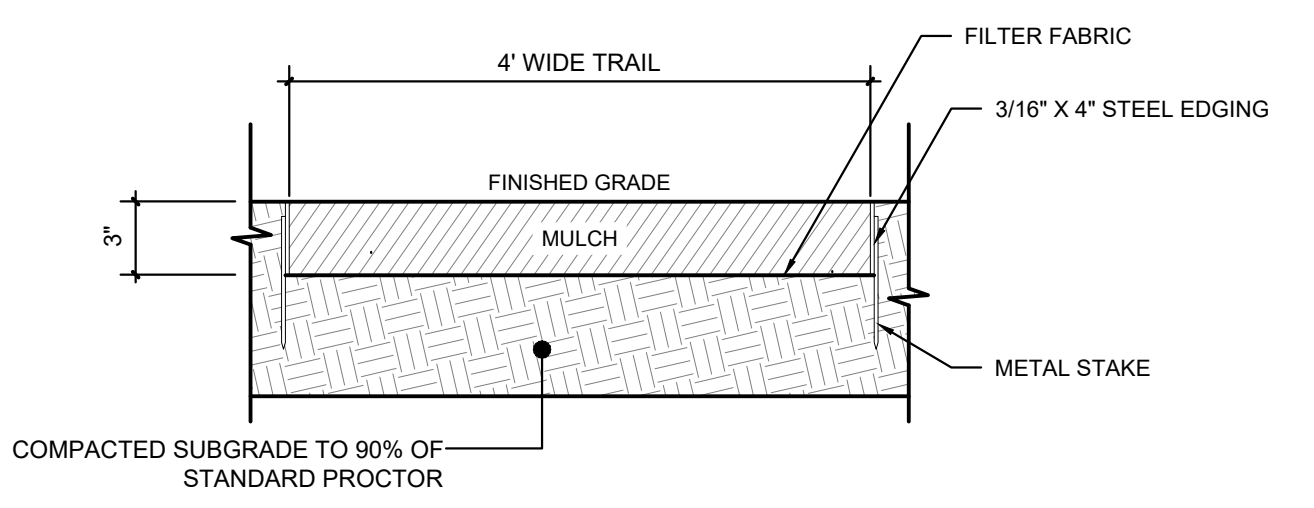
**UTILITY NOTE:** LOCATION OF EXISTING UNDERGROUND UTILITIES ARE APPROXIMATE AND NOT NECESSARILY THE SAME. THE CONTRACTOR SHALL BE RESPONSIBLE FOR CONTACTING THE APPROPRIATE UTILITY COMPANY TO DETERMINE THE EXACT LOCATION OF ALL UTILITIES AND UNDERGROUND STRUCTURES PRIOR TO THE INITIATION OF ANY CONSTRUCTION. CONTRACTOR SHALL ASSUME FULL RESPONSIBILITY FOR DAMAGE TO ANY UTILITIES ENCOUNTERED WITHIN CONSTRUCTION LIMITS. CALL 811 FOR UTILITY LOCATIONS.



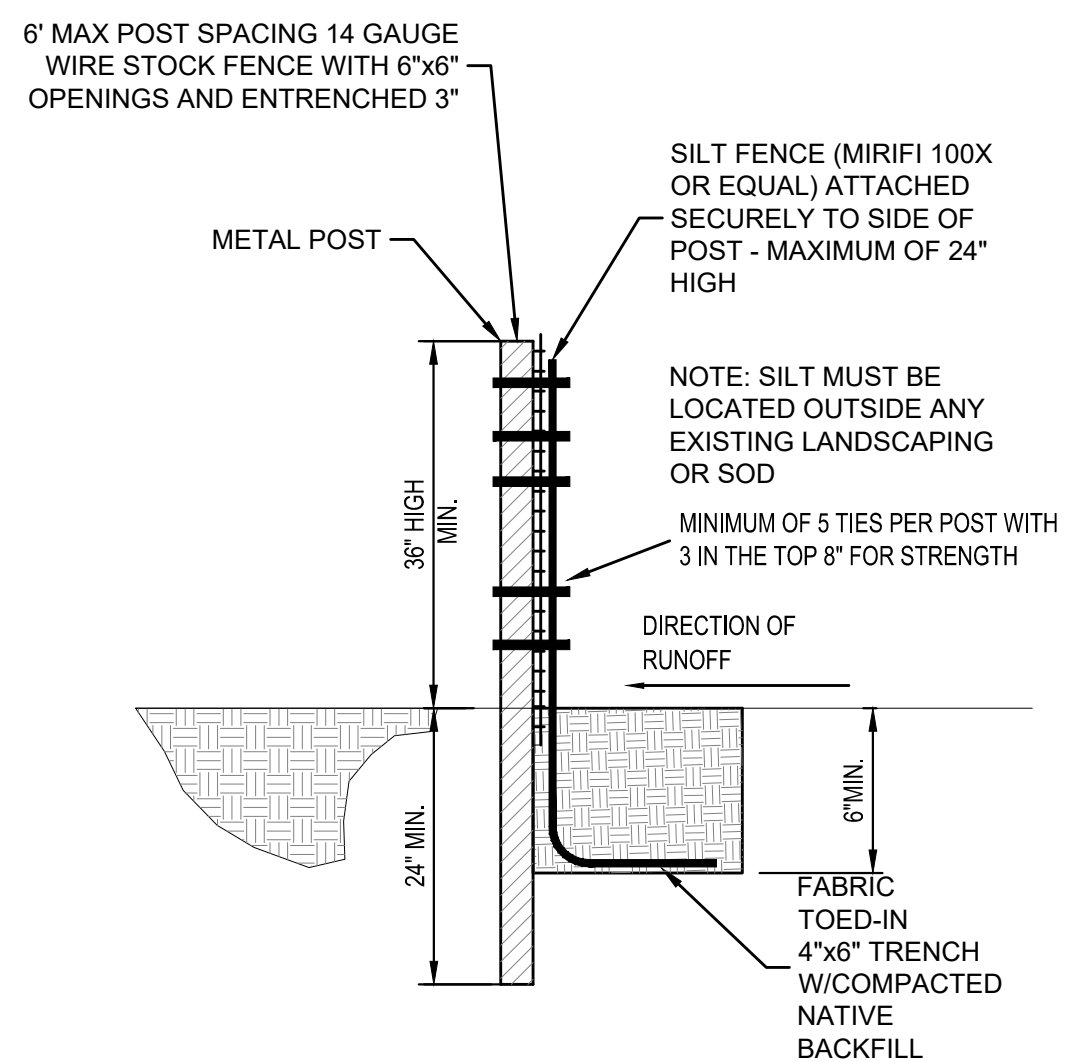
| REV | DATE | DESCRIPTION |
|-----|------|-------------|
|     |      |             |



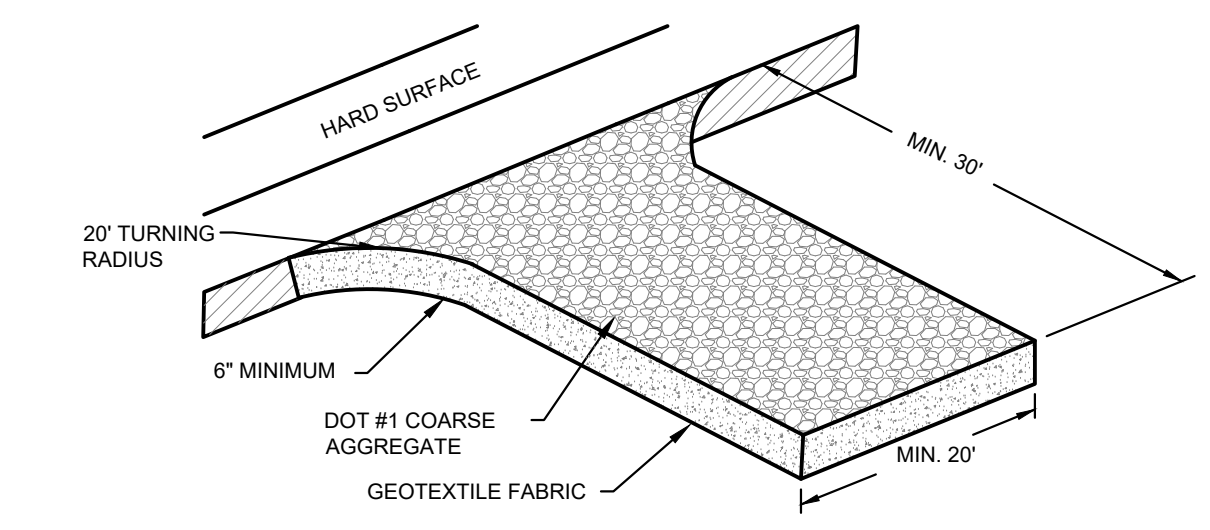
**1** SIDEWALK DETAILS  
 C6.0 NOT TO SCALE



**2** MULCH WALKING TRAIL DETAIL  
 C6.0 NOT TO SCALE

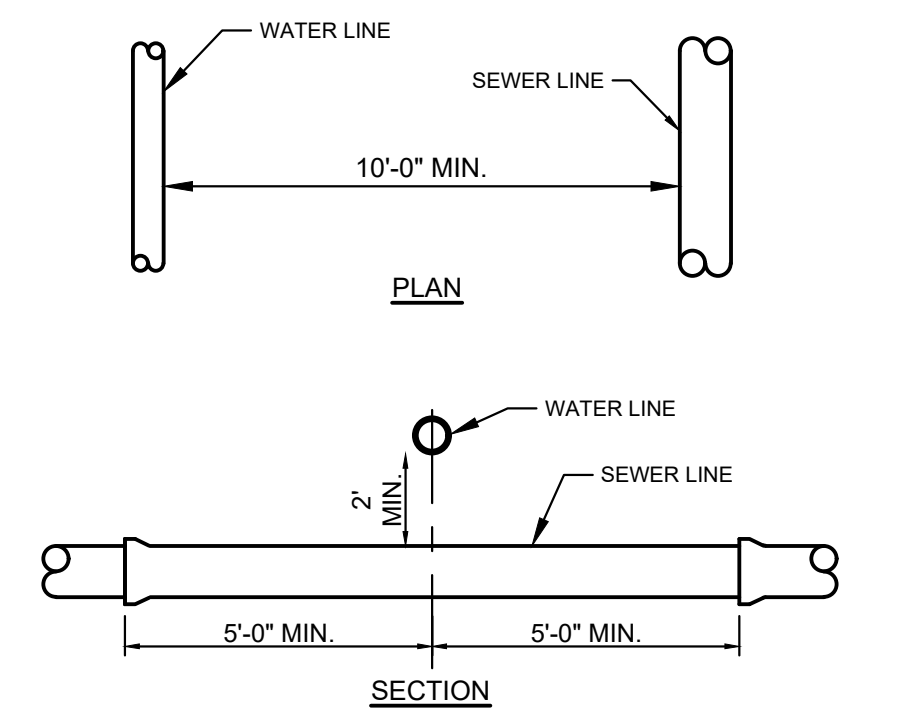


**3** SILT FENCE WITH WIRE BACKING  
 C6.0 NOT TO SCALE

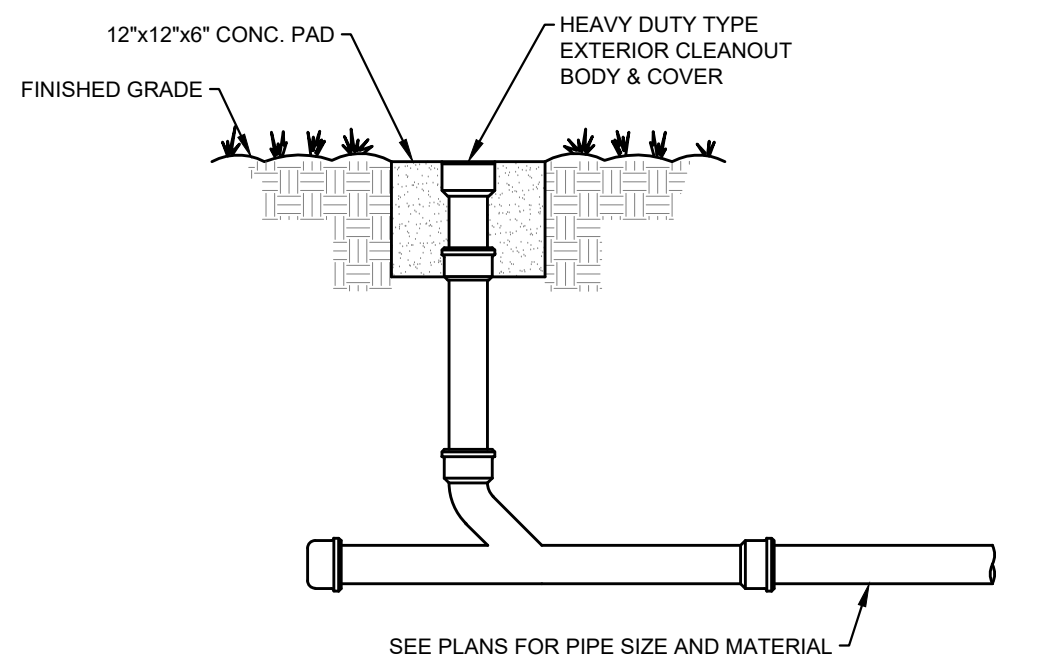


- DESIGN CRITERIA**
- AGGREGATE SIZE - AGGREGATE (2"-4" INCH CLEAN WASHED STONE) SHOULD BE USED.
  - EXIT DIMENSIONS - THE AGGREGATE LAYER MUST BE AT LEAST 6 INCHES THICK. IT MUST EXTEND THE FULL WIDTH OF THE VEHICULAR INGRESS AND EGRESS AREA. THE LENGTH OF THE ENTRANCE MUST BE AT LEAST 50 FEET.
  - WASHING - IF CONDITIONS ON THE SITE ARE SUCH THAT THE MAJORITY OF THE MUD IS NOT REMOVED BY THE VEHICLES TRAVELING OVER THE GRAVEL, THEN THE TIRES OF THE VEHICLES MUST BE WASHED BEFORE ENTERING A PAVED SURFACE. WASH WATER MUST BE CARRIED AWAY FROM THE ENTRANCE TO A SETTLING AREA TO REMOVE SEDIMENT. A WASH RACK MAY ALSO BE USED TO MAKE WASHING MORE CONVENIENT AND EFFECTIVE.
  - LOCATION - THE EXIT SHOULD BE LOCATED TO PROVIDE FOR MAXIMUM UTILITY BY ALL CONSTRUCTION VEHICLES.
- CONSTRUCTION SPECIFICATIONS:**
- THE AREA OF THE EXIT SHOULD BE CLEARED OF ALL VEGETATION, ROOTS, AND OTHER OBJECTIONABLE MATERIAL. THE GRAVEL SHALL BE PLACED TO THE SPECIFIED DIMENSIONS AND ON TOP OF A GEOTEXTILE LINER. ANY DRAINAGE FACILITIES REQUIRED BECAUSE OF WASHING SHOULD BE CONSTRUCTED ACCORDING TO SPECIFICATIONS. IF WASH RACKS ARE USED, THEY SHOULD BE INSTALLED ACCORDING TO MANUFACTURER'S SPECIFICATIONS.
- MAINTENANCE:**
- THE ENTRANCE SHALL BE MAINTAINED IN A CONDITION WHICH WILL PREVENT TRACKING OR FLOW OF MUD. THIS MAY REQUIRE PERIODIC TOP DRESSING WITH 2 INCH STONE, AS CONDITIONS DEMAND, AND REPAIR AND/OR CLEANOUT OF ANY STRUCTURES USED TO TRAP SEDIMENT. ALL MATERIALS SPILLED, DROPPED, WASHED, OR TRACKED FROM VEHICLES ONTO ROADWAYS OR INTO STORM DRAINS MUST BE REMOVED IMMEDIATELY.

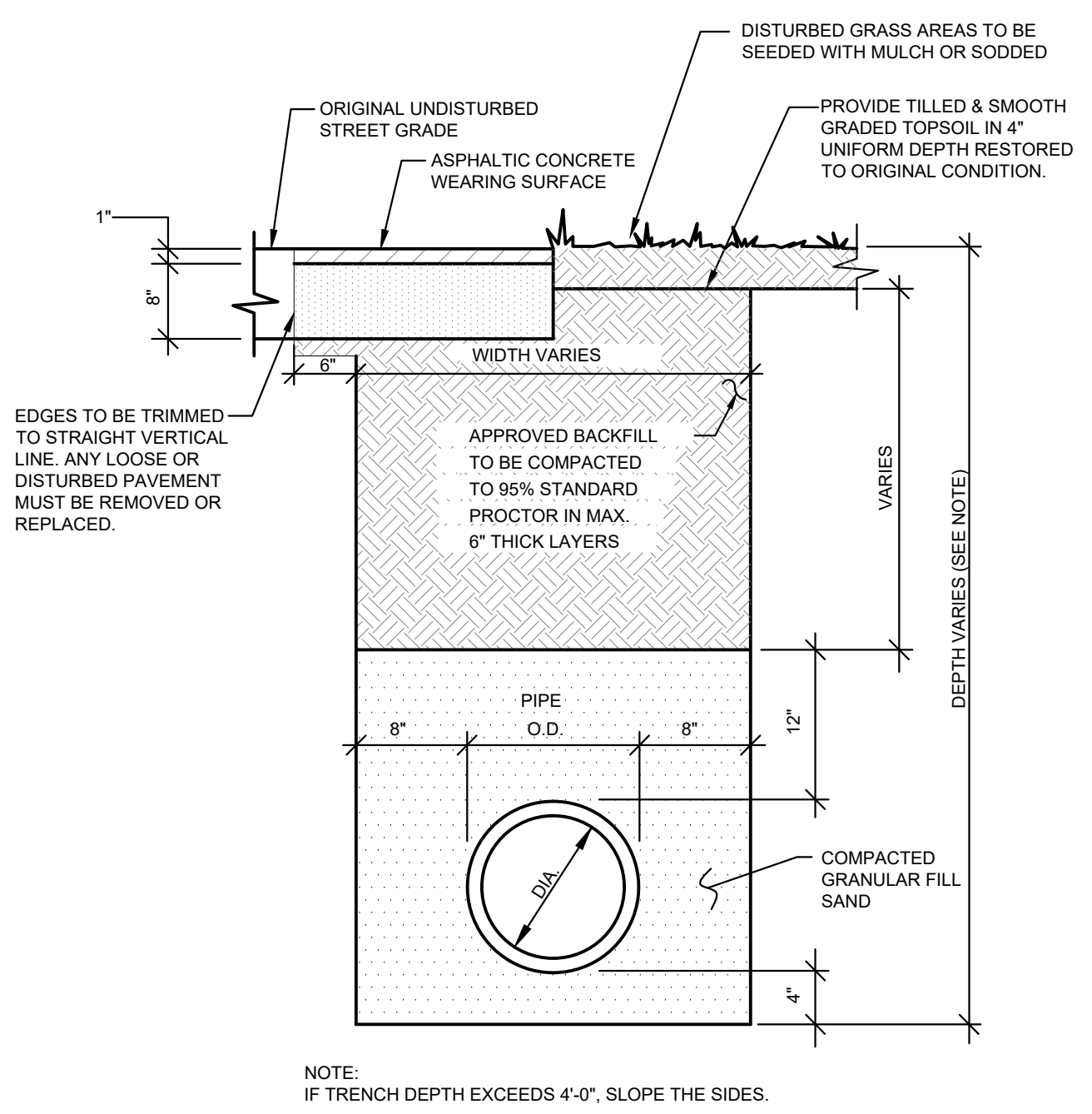
**4** TEMPORARY CONSTRUCTION EXIT  
 C6.0 NOT TO SCALE



**5** SEPARATION OF WATER AND SEWER LINES  
 C6.0 NOT TO SCALE

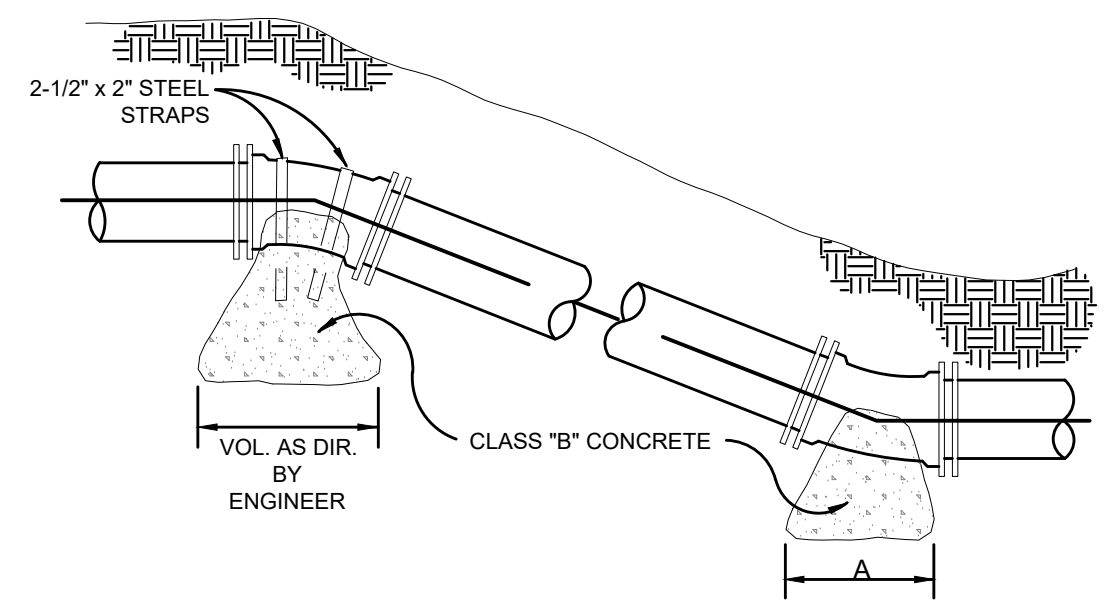


**6** CLEANOUT DETAIL  
 C6.0 NOT TO SCALE



**7** UTILITY PIPE BEDDING DETAIL  
 C6.0 NOT TO SCALE

- GENERAL NOTES FOR BEDDING**
- BEDDING SHALL BE CLASS I-A WORKED BY HAND. IF GROUNDWATER IS ANTICIPATED, THEN BEDDING SHALL BE CLASS I-B COMPACTED TO 95% STANDARD PROCTOR.
  - HAUNCHING SHALL BE WORKED AROUND THE PIPE BY HAND TO ELIMINATE VOIDS AND SHALL BE CLASS I-A OR CLASS I-B OR CLASS II COMPACTED TO 95% STANDARD PROCTOR.
  - INITIAL BACKFILL SHALL BE CLASS I-A WORKED BY HAND, OR CLASS I-B OR CLASS II COMPACTED TO 95% STANDARD PROCTOR.
  - INITIAL BACKFILL NOT UNDER PAVED AREAS CAN BE CLASS III COMPACTED TO 95% STANDARD PROCTOR.
  - FINAL BACKFILL SHALL BE CLASS I, II, OR III COMPACTED AS NOTED IN NOTES 3 AND 4.
  - FINAL BACKFILL NOT UNDER PAVED AREAS CAN BE CLASS IV-A COMPACTED TO 95% STANDARD PROCTOR.
  - ALL MATERIALS ARE CLASSIFIED IN ACCORDANCE WITH ASTM D 2321-89.
  - ALL MATERIALS SHALL BE INSTALLED IN MAXIMUM 8" LOOSE LIFTS IN ACCORDANCE WITH ASTM D 698. CLASS III AND IV-A MATERIALS SHALL BE COMPACTED NEAR OPTIMUM MOISTURE CONTENT.
  - FILL SALVAGED FROM EXCAVATION SHALL BE FREE OF DEBRIS, ORGANICS AND ROCKS LARGER THAN 3".
  - ALL TRENCH EXCAVATIONS SHALL BE SLOPED, SHORED, SHEETED, BRACED, OR OTHERWISE SUPPORTED IN COMPLIANCE WITH OSHA REGULATIONS AND LOCAL ORDINANCES. (SEE SPECIFICATIONS)
  - BEDDING MATERIAL USED IN CONJUNCTION WITH ANY PIPES WHICH PENETRATE A EMBANKMENT SHALL BE LOW PERMEABILITY, COHESIVE SOILS EXHIBITING HIGH SHRINK/SWELL POTENTIAL OR CONTAINING GREATER THEN 5% ORGANICS SHALL NOT BE USED.



**VERTICAL THRUST BLOCK DETAIL**

| PIPE SIZE     |   | 12"   | 10"   | 8"    | 6"    |
|---------------|---|-------|-------|-------|-------|
| 90° BEND      | A | 4'-0" | 4'-0" | 3'-0" | 2'-0" |
|               | B | 4'-0" | 3'-0" | 2'-6" | 2'-0" |
| TEE           | A | 4'-0" | 3'-0" | 2'-6" | 2'-0" |
|               | B | 3'-0" | 3'-0" | 2'-0" | 1'-6" |
| 45° BEND      | A | 3'-0" | 3'-0" | 2'-0" | 1'-6" |
|               | B | 3'-0" | 3'-0" | 2'-0" | 1'-6" |
| 22 1/2° BEND  | A | 2'-6" | 2'-0" | 2'-0" | 1'-6" |
|               | B | 3'-0" | 1'-6" | 1'-6" | 1'-6" |
| 11 1/4° BEND  | A | 2'-0" | 1'-6" | 1'-6" | 1'-6" |
|               | B | 2'-0" | 1'-6" | 1'-6" | 1'-6" |
| DEAD END MAIN | A | 4'-0" | 3'-0" | 3'-0" | 3'-0" |
|               | B | 3'-0" | 3'-0" | 2'-0" | 1'-0" |

**8** THRUST BLOCK DETAILS  
 C6.0 NOT TO SCALE

Forked Deer River Park Bathroom Facility  
 CITY OF DYERSBURG

|             |     |
|-------------|-----|
| DRAWN BY    | MW  |
| DESIGNED BY | BT  |
| CHECKED BY  | SSR |

|                |            |
|----------------|------------|
| SHEET TITLE    | DETAILS    |
| DATE           | 05/01/2024 |
| PROJECT STATUS | CD         |
| SHEET NUMBER   | C6.0       |