



General Supervision: APR Indicators 8 & 11

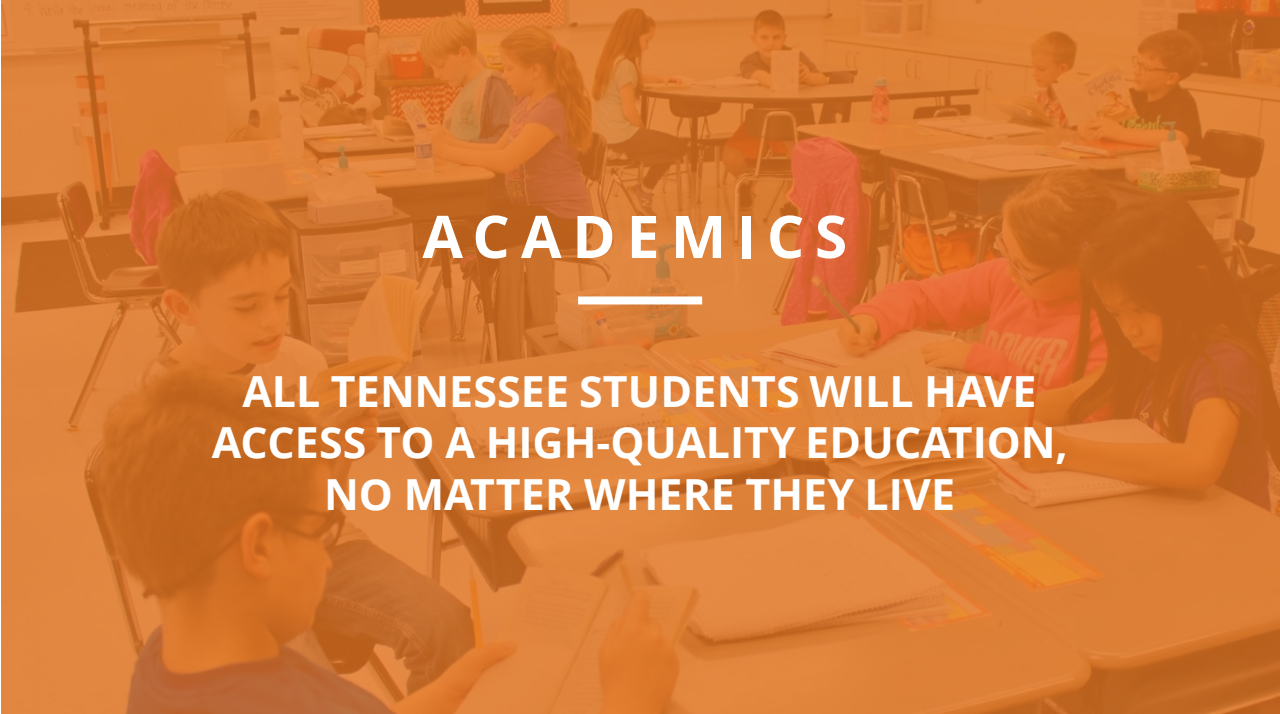
Zac Stone

*Senior Director of Data Analysis for Special Populations |
Office of Districts and Schools*



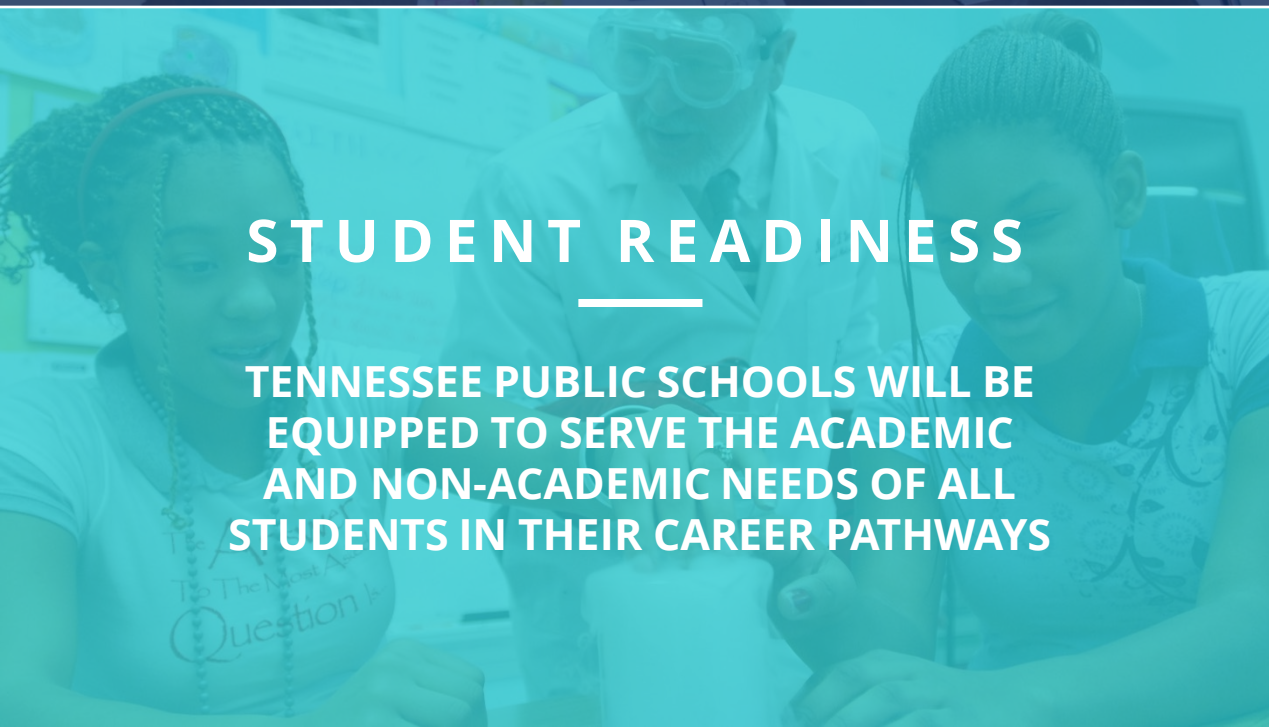
BEST FOR ALL

We will set all students on a path to success.



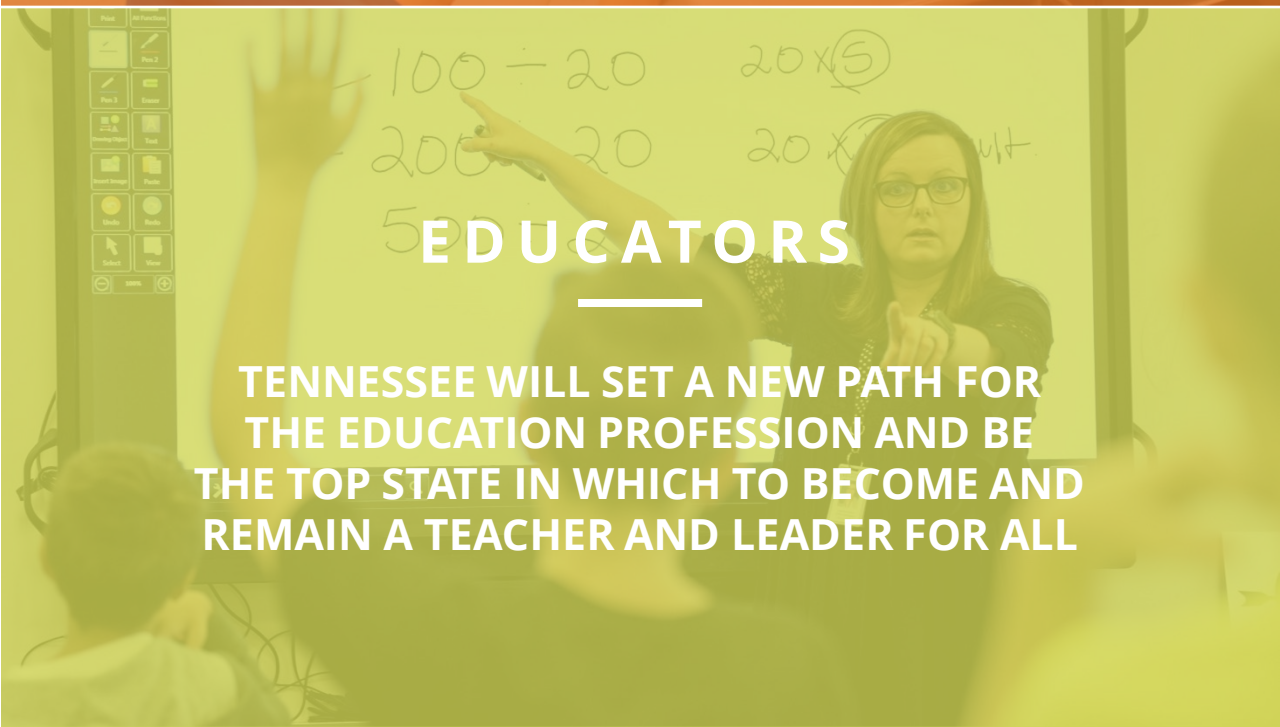
ACADEMICS

ALL TENNESSEE STUDENTS WILL HAVE ACCESS TO A HIGH-QUALITY EDUCATION, NO MATTER WHERE THEY LIVE



STUDENT READINESS

TENNESSEE PUBLIC SCHOOLS WILL BE EQUIPPED TO SERVE THE ACADEMIC AND NON-ACADEMIC NEEDS OF ALL STUDENTS IN THEIR CAREER PATHWAYS



EDUCATORS

TENNESSEE WILL SET A NEW PATH FOR THE EDUCATION PROFESSION AND BE THE TOP STATE IN WHICH TO BECOME AND REMAIN A TEACHER AND LEADER FOR ALL

APR Local Determinations Overview

- As required by the Individuals with Disabilities Education Act (IDEA), 34 C.F.R. § 300.600, states must monitor the implementation of IDEA in each LEA.
- Tennessee monitors LEA implementation on 14 indicators.
 - Compliance indicator targets are set by the federal government.
 - Results indicator targets are set by TDOE.
- LEAs earn points for each indicator based on meeting the target and/or demonstrating year-to-year improvement.
- Total weighted points earned are divided by total possible weighted points to make the overall determination.





Agenda

General Supervision:

- Indicator 8: Parent Involvement
- Indicator 11: Child Find



Indicator 8:

Parent Involvement



Indicator 8: Parent Involvement

- Definition—Percent of parents of students who report that schools facilitated parent involvement as a means to improve services and results for SWDs.
- Source—The APR Indicator 8 parent survey administered by the department annually between February 15 and May 15.
- Calculation—Using your district’s survey results that are uploaded to ePlan with notification of APR local determinations:

Parents who agreed or strongly agreed with Question 1



Total number of parents who responded to Question 1



Calculating Indicator 8 for your LEA

- In ePlan, navigate to your district's *LEA Document Library* for the applicable fiscal year (FY).
 - The FY aligns with the year in which your district received its determination. For example, the federal fiscal year (FFY) 2020 (2020-21 school year) APR local determinations were released in January 2022, which was in FY22.
- If your district participated in the Indicator 8 Parent Survey, Indicator 8 Parent Survey Results are available in the *Specific Indicator Data* folder.

The screenshot displays the 'LEA Document Library' interface. At the top, there are links for '[Expand All]' and '[Collapse All]'. The main content is organized as follows:

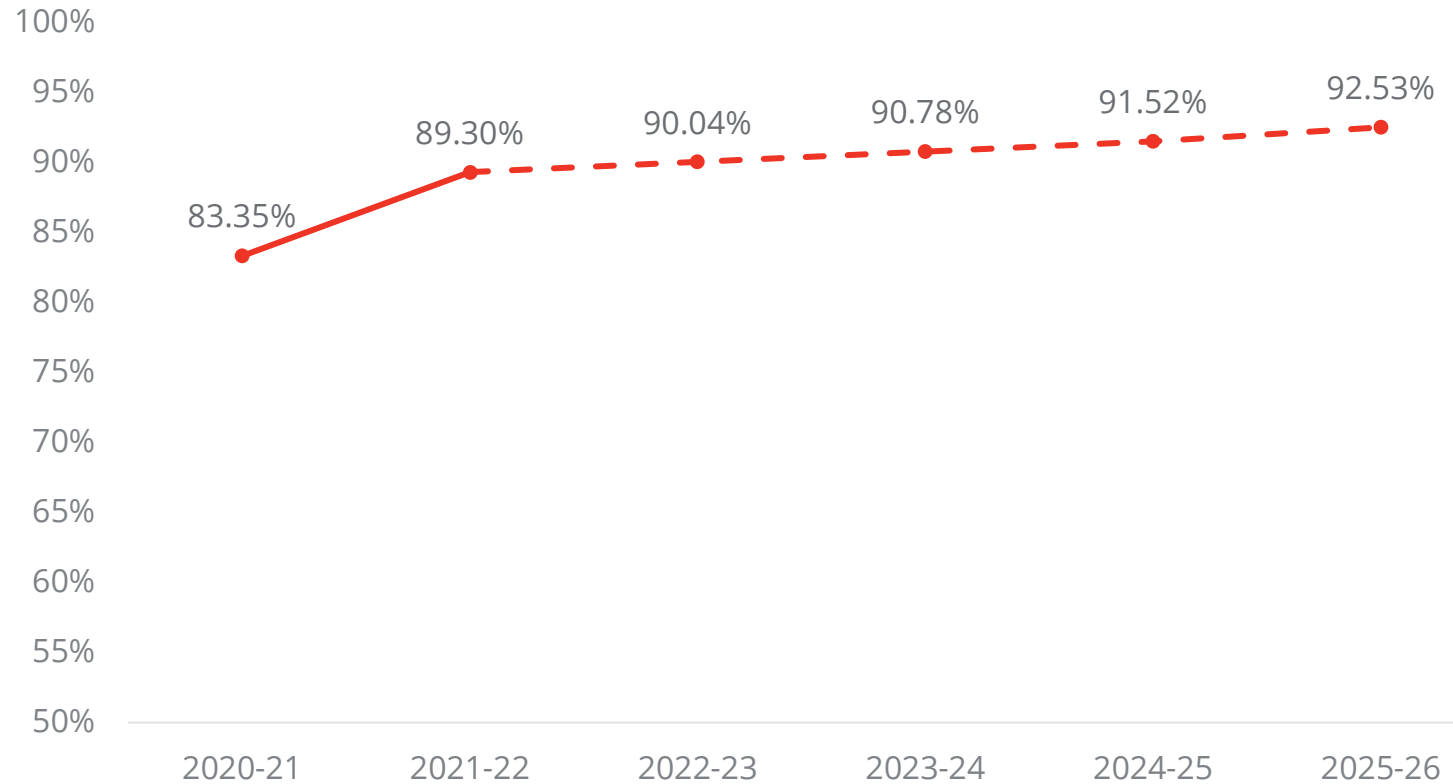
- 2022
 - Folders
 - Alternative Breakfast Grant FY20
 - Annual Performance Report (APR) Local Determinations
 - Folders
 - FFY 2020 (2020-21 SY)
 - Documents
 - Letter of Local Determination [Edit Documents]
 - Local Determinations Data Matrix [Edit Documents]
 - APR Local Determination Acknowledgement Form [Edit Documents]
 - Specific Indicator Data [Edit Documents]

A red arrow points to the 'Specific Indicator Data' document at the bottom of the list.

Parent Involvement Targets

Targets by Determination Year

The target for the 2021-22 determination year will be 89.30% or more.



Indicator 11:

Child Find



Indicator 11: Child Find

- Definition—Percent of children who were evaluated within 60 days of receiving parental consent for initial evaluation or within a state established timeframe if the state has one in place.
- Source—The *FINAL Initial Elig (60 Day) Report* generated in EDPlan/EasyIEP on September 1.
- Calculation—Using the *FINAL Initial Elig (60 Day) Report*:

Students who met the 60-day timeline and are in compliance



The total number of students who either received initial consent and eligibility in the district, received initial consent in the district but transferred to a different district after the end of the 60-day timeline, or received initial consent in a different district and transferred to the district before the end of the 60-day timeline



Calculating Indicator 11 for your LEA

- Run the *Initial Elig (60 Day) Report (XLS)* and generate a report with the dates of July 1 to June 30 of the applicable school year. Select the option that says "Only show students with Initial Consent for Eligibility Determination Dates within the above date range." Also, select the box to exclude students with an out-of-state transfer.
- To identify students who did not meet the 60-day timeline and are out of compliance, download the *Initial Elig (60 Day) Report (XLS)* and follow these steps:
 - Create filters for each column in the header row, starting with "State ID".
 - Filter column N "Days to Eligibility" for counts greater than 60.
 - Filter column X "Approved Date for Timeline Extension" for "Blanks". (Students are not out of compliance if they have an approved timeline extension.)
- To identify students who did not meet the 60-day timeline and still have open evaluations, download the *Initial Elig (60 Day) Report (XLS)* and follow these steps:
 - Create filters for each column in the header row, starting with "State ID".
 - Filter column M "Days From Initial Consent Elig. Eval. Received Date" for counts greater than 60.
 - Filter column X "Approved Date for Timeline Extension" for "Blanks". (Students are not out of compliance if they have an approved timeline extension.)
- To identify students who have open evaluations and are still within the 60-day timeline, follow the steps above, but filter column M for counts less than 60.

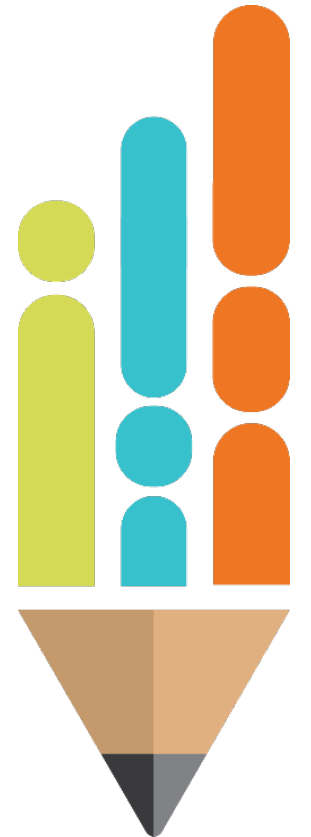
Child Find Target

- Indicator 11 is a compliance indicator; therefore, the target will always be 100 percent.
- Districts should ensure that all students who received initial consent prior to June 30 have an eligibility determination by August 31, unless the student has an approved timeline extension.

EasyTrac	EDPlan Connect	Federal	General	Local	Misc
MISC REPORT SECTION					
All IEP Svcs Report w/ Minutes (XLS) ?			Meeting Date to Service Beg. Date(XLS)		
All Student Export (txt) ?			Non-Eligibility Report (xls)		
All Student Export - SPED Only (XLS) ?			PaperClip Usage		
Child Count (PDF) ?			Progress Report Status (PDF) ?		
Duplicate Document Report (XLS)			Progress Report Status (xls) ?		
ESY by School and Case Manager (XLS) ?			Recent Logins (PDF) ?		
ESY Listed by Services (XLS) ?			Recent Logins (txt) ?		
Flexible Listing Report (PDF) ?			Student Documents		
IEP Meeting Date to Service BeginDate ?			TN - Compliance Report ?		
IEP Related Services Only (XLS) ?			TN Usage Report		
Duplicate Document Report (txt) ?			TN-EIS-Combined-Extract		
Inactive Students with Options (PDF) ?			TN-Student List (PDF) ?		
Initial Elig (60 Day) Report (XLS)			Transportation Report - 2 (XLS) ?		
Mailing Labels (txt) ?			Transportation with Address (txt) ?		
			User Access Agreement Report (xls) ?		

Contact Information

- Zachary Stone, *Senior Director of Data Analysis for Special Populations*
 - Zachary.Stone@tn.gov
- Adam Rollins, *IDEA Data Manager*
 - Adam.Rollins@tn.gov
- Sheryn Ordway, *EasyIEP Help Desk Coordinator*
 - Sheryn.Ordway@tn.gov



Feedback Survey

- Please take a moment to complete this feedback survey about today's presentation:
https://stateoftennessee.formstack.com/forms/general_supervision_apr_indicators_8_11_feedback

