



FAPE: APR Indicators 3 & 5

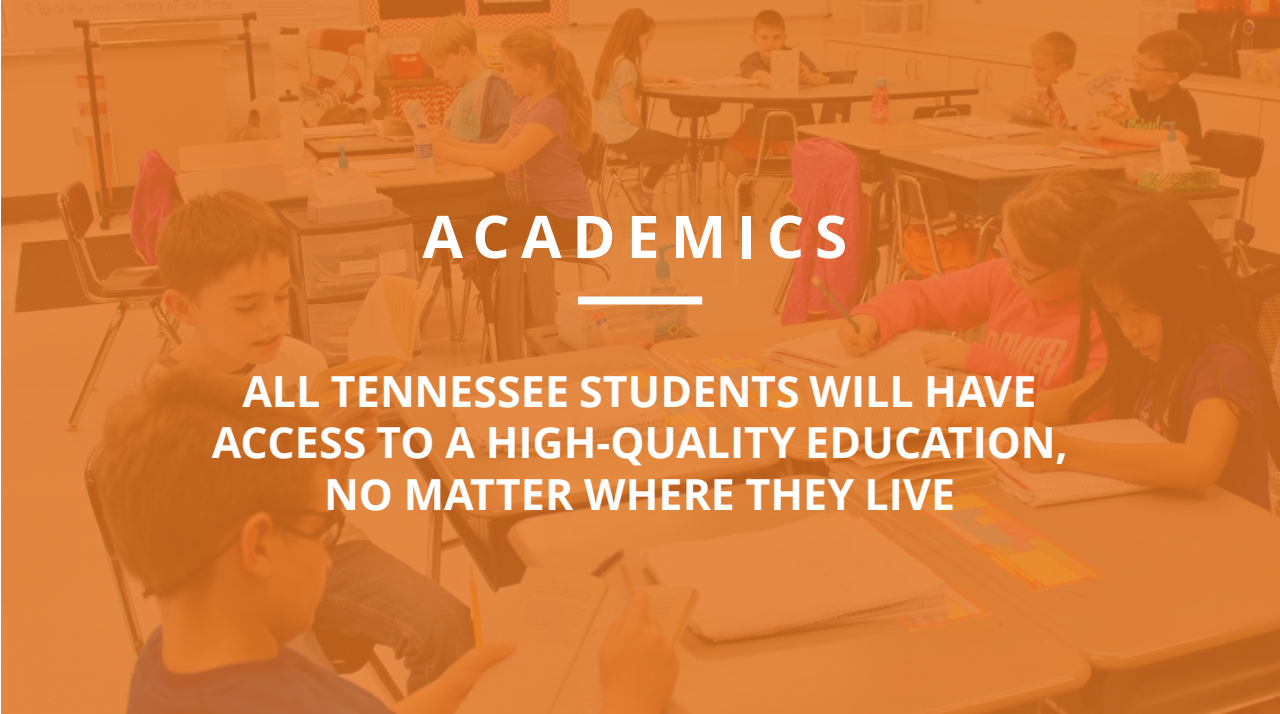
Adam Rollins

IDEA Data Manager



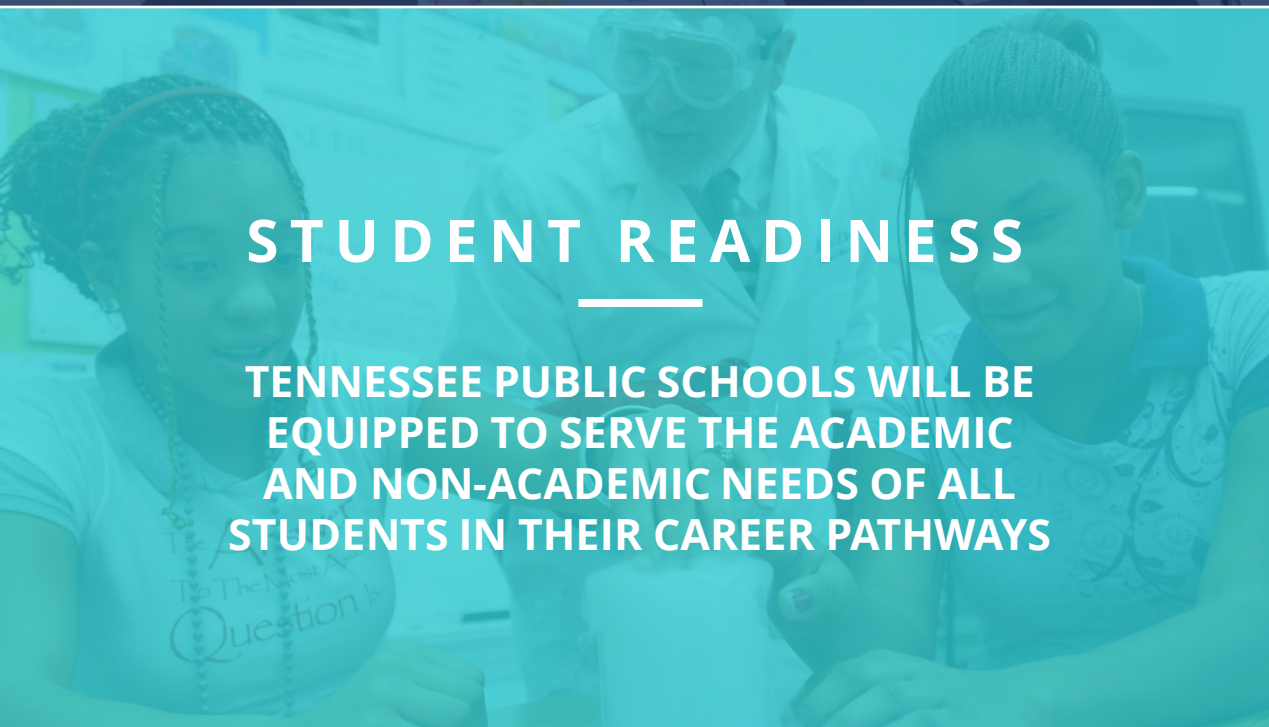
BEST FOR ALL

We will set all students on a path to success.



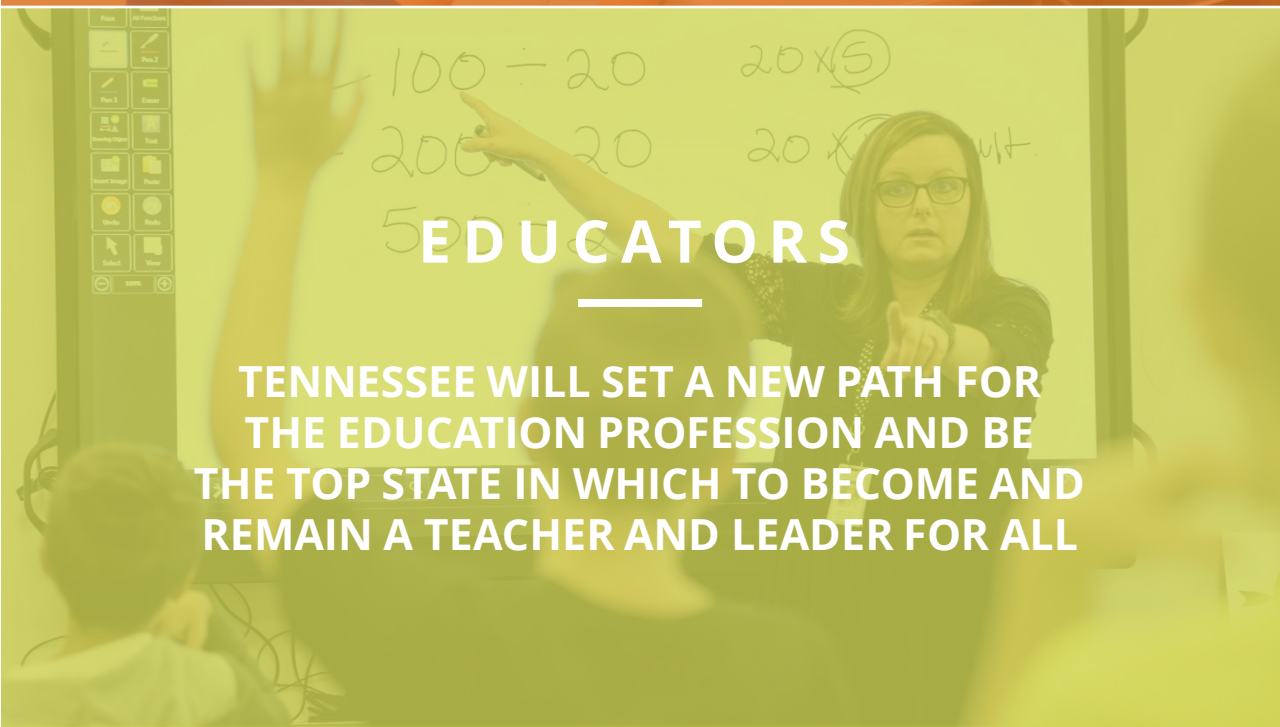
ACADEMICS

ALL TENNESSEE STUDENTS WILL HAVE ACCESS TO A HIGH-QUALITY EDUCATION, NO MATTER WHERE THEY LIVE



STUDENT READINESS

TENNESSEE PUBLIC SCHOOLS WILL BE EQUIPPED TO SERVE THE ACADEMIC AND NON-ACADEMIC NEEDS OF ALL STUDENTS IN THEIR CAREER PATHWAYS



EDUCATORS

TENNESSEE WILL SET A NEW PATH FOR THE EDUCATION PROFESSION AND BE THE TOP STATE IN WHICH TO BECOME AND REMAIN A TEACHER AND LEADER FOR ALL

APR Local Determinations Overview

- As required by the Individuals with Disabilities Education Act (IDEA), 34 C.F.R. § 300.600, states must monitor the implementation of IDEA in each LEA.
- Tennessee monitors LEA implementation on 14 indicators.
 - Compliance indicator targets are set by the federal government.
 - Results indicator targets are set by TDOE.
- LEAs earn points for each indicator based on meeting the target and/or demonstrating year-to-year improvement.
- Total weighted points earned are divided by total possible weighted points to make the overall determination.





Agenda

Free Appropriate Public Education (FAPE):

- Indicator 3: Statewide Assessments
 - 3A: Assessment Participation
 - 3B: Assessment Proficiency
- Indicator 5A: Students served in general education 80% or more of the day



Indicator 3:

Statewide Assessments



Indicator 3A: Assessment Participation

- Definition—Participation rate for SWDs on statewide assessments, by grade and subject area (ELA grades 4 & 8, math grades 4 & 8, EOC Eng. [Eng. II], EOC Math [Alg. I/Int. Math I]).
- Source—Assessment data compiled and disseminated by the Accountability team.
- Calculation—Using SWD counts for each relevant grade and subject:

Students
counted as
“tested”



Students
counted as
“enrolled”



Calculating Indicator 3A for your LEA

- You may locate the district-level assessment file available on the TDOE's ["Data Downloads & Requests"](#) page.
- Use the Excel filter feature to locate the relevant counts. For example:
 - system_name = your LEA
 - subgroup = "Students with Disabilities"
 - subject = "Math" (or ELA, English II, etc.)
 - Grade = "4" & "8" (or All Grades for EOCs + 11the grade MSAA)
 - Relevant counts are labeled "enrolled" and "tested"

year	system	system	test	subject	grade	subgroup	particip	enrolle	tested
2021	999	LEA Name	MSAA/Alt	Math	4	Students	*	5	5
2021	999	LEA Name	TNReady	Math	4	Students	97	33	32
2021	999	LEA Name	MSAA/Alt	Math	8	Students	*	4	4
2021	999	LEA Name	TNReady	Math	8	Students	96	23	22

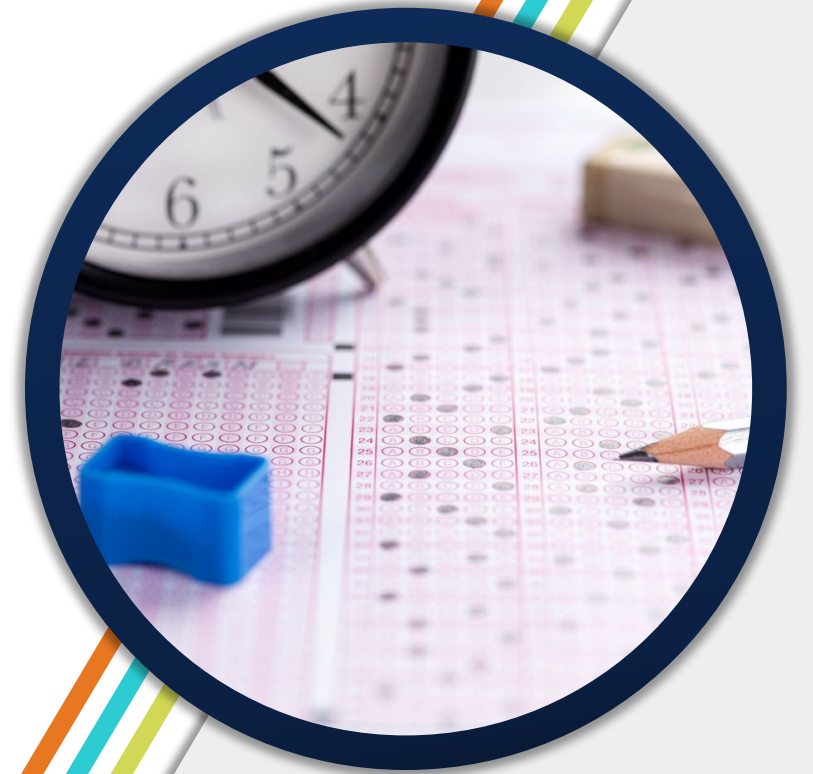
Indicator 3B: Assessment Proficiency

- Definition—Proficiency rate (Approaching or above) for SWDs on statewide assessments, by grade and subject area (ELA grades 4 & 8, math grades 4 & 8, EOC Eng. [Eng. II], EOC Math [Alg. I/Int. Math I]).
- Source—Assessment data compiled and disseminated by the Accountability team.
- Calculation—Using SWD counts for each relevant grade and subject:

Students
counted as
Approaching,
Met, or
Exceeded



Students
counted as
"valid_tests"



Calculating Indicator 3B for your LEA

- You may locate the district-level assessment file available on the TDOE's data downloads page.
- Use the Excel Filter feature to filter locate the relevant counts. For example:
 - system_name = your LEA
 - subgroup = "Students with Disabilities"
 - subject = "Math" (or ELA, English II, etc.)
 - Grade = "4" & "8" (or All Grades for EOCs)
 - Relevant counts are labeled "valid_tests" and "n_approaching", "n_met_expectations", & "n_exceeded_expectations"

test	subject	grade	subgroup	particip	enrolle	tested	valid_t	n_belo	n_appr	n_on_t	n_mast	pct
e MSA/Alt	Math	4	Students	88	52	46	43	9	17	15	2	
e TNReady	Math	4	Students	97	417	405	403	255	85	49	14	
e MSA/Alt	Math	8	Students	82	73	60	53	11	10	19	13	
e TNReady	Math	8	Students	93	305	283	281	210	54	14	3	

Indicator 3 Targets

- Indicator 3A will have a target of **95%** participation each year.
- Indicator 3B will have a target of **1% increase** in proficiency from the previous year.

	Baseline (2020-21)	2021-22	2022-23	2023-24	2024-25	2025-26
Hypothetical Scores	8.9%*	10.5%	10.7%	11.6%	12.8%	13.9%
Hypothetical Target		>=9.9%	>=11.5%	>=11.7%	>=12.6%	>=13.8%
Target Status		<i>Met</i>	<i>Not Met</i>	<i>Not Met</i>	<i>Met</i>	<i>Met</i>

- If no statewide assessments are available from the previous school year, APR Indicator 3B compares proficiency rates among districts rather than proficiency change. Proficiency change is only used when two consecutive years of assessment data are available.



Indicator 5A:

Educational Environment (Ages 5
in Kindergarten Through 21)



Indicator 5A: Educational Environment (Ages 5 in Kindergarten Through 21)

- Definition—Percent of SWDs served inside the regular class (general education) 80 percent or more of the day.
- Source—The *FINAL Combined Table 1&3 Dec1 Rpt Details (XLS)* generated in EDPlan/EasyIEP on December 1.
- Calculation—Using the *FINAL Combined Table 1&3 Dec1 Rpt Details (XLS)*:

SWDs who are in environment category A (regular education 80% or more of the day.)



Total number of SWDs ages 5(K)-21.



Calculating Indicator 5A for your LEA

- Download the *FINAL Combined Table 1&3 Dec1 Rpt Details (XLS)* for the applicable school year or Request the report titled *Combined Table 1&3 Dec1 Rpt Details (XLS)* in EDPlan/EasyIEP.
- If using the *Combined Table 1&3 Dec1 Rpt Details (XLS)*, you can run this report for any date you want to see.

Main Menu | Students | My Docs | My Reports | Wizards | A

System Info | Reports | Inactive Students | User Types | External
Merge Students | Lists | Assign Teachers | Inactive Users | User Ty

Reports - Combined Table 1&3 Dec1 Rpt Details (XLS)

Date of Census: 12/01/2021

Date Due:

Run	Auto Schedule	
<input type="checkbox"/> The report will be scheduled to	<input type="radio"/> Run every <input type="text"/> day(s).	<input type="checkbox"/> Advance all dates
	<input type="radio"/> Run every <input type="text"/> of the month. (comma delimited list)	(WARNING: Report p mechanism. Reports run should either be v page and then clicking

Calculating Indicator 5A for your LEA

- In EasyIEP, download the *FINAL Combined Table 1&3 Dec1 Rpt Details (XLS)* for the applicable school year. Percent represents the total number of SWDs in environment category A (Column I, Row 294) divided by total number of SWDs ages 5(K)-21 (Column F, Row 97).
- To review a list of individual students and their environment categories, refer to the section of the *FINAL Combined Table 1&3 Dec1 Rpt Details (XLS)* titled "Students included in report" under "Data Output."

291	Table 3 Section G: ages 5K-21								
292	Race/Ethnicity								
293	Education	HISPANIC	AMERICAN INDIAN	ASIAN	BLACK OR AFRICAN AMERICAN	NATIVE HAWAIIAN	WHITE	TWO OR MORE RACES	Total
294	(A) In the	58	42	6	304	0	226	21	657

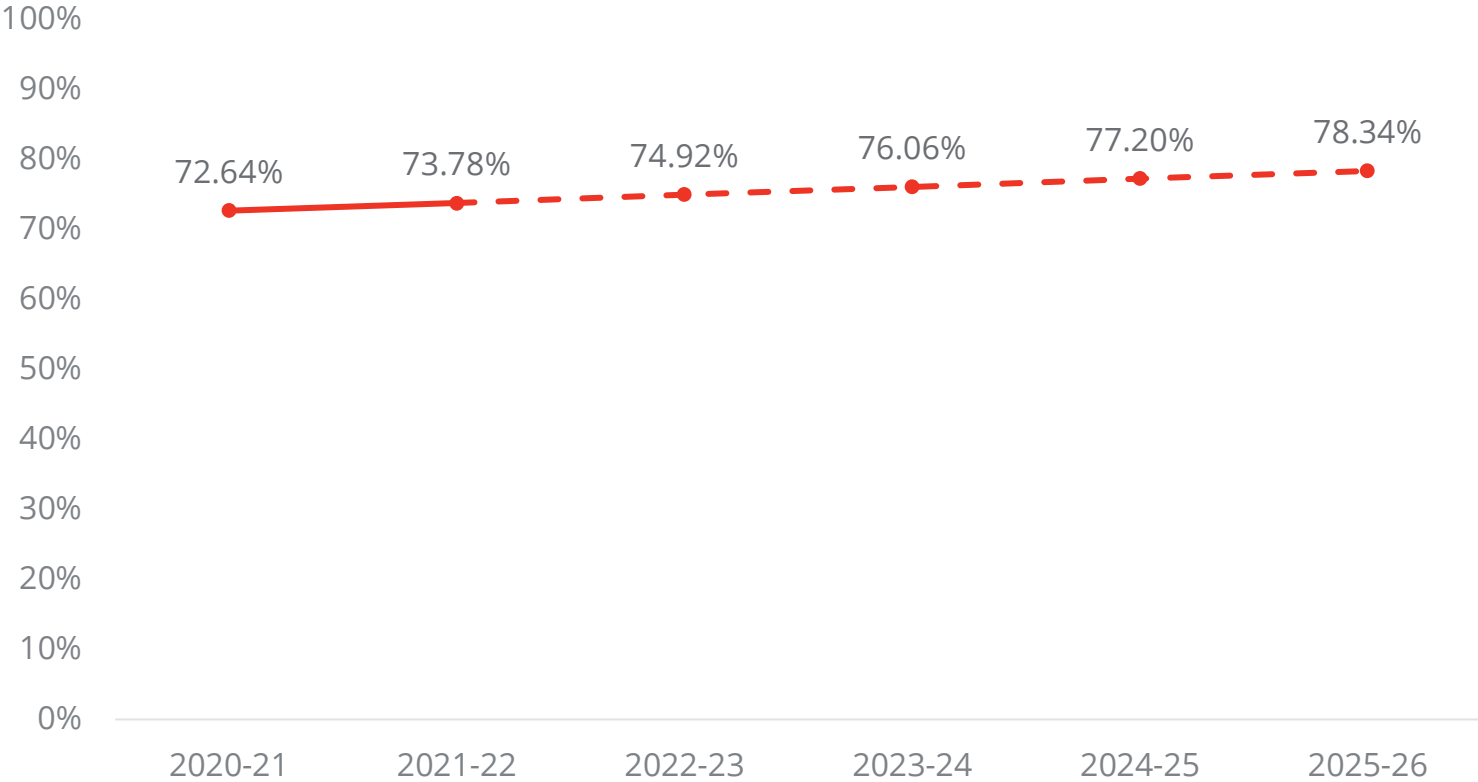
81	Table 1 Section C (part 3)					
82	Age As of Data Collection Date					
83	Disability	18	19	20	21	5(K)-21
84	INTELLECTUAL	0	0	0	0	15
85	HEARING	0	0	0	0	6
86	SPEECH OR LANGUAGE	0	0	0	0	301
87	VISUAL IMPAIRMENT	0	0	0	0	5
88	EMOTIONAL OR BEHAVIORAL	0	0	0	0	2
89	ORTHOPEDIC	0	0	0	0	18
90	OTHER HEALTH IMPAIRMENT	0	0	0	0	12
91	SPECIFIC LEARNING DIFFICULTIES	0	0	0	0	246
92	DEAF-BLIND	0	0	0	0	0
93	MULTIPLE DISABILITIES	0	0	0	0	25
94	AUTISM	0	0	0	0	36
95	TRAUMATIC BRAIN INJURY	0	0	0	0	4
96	DEVELOPMENTAL DELAY	0	0	0	0	177
97	Totals	0	0	0	0	847

----- Data Output -----									
Students included in report for District									
District Cc	Student I#	State ID	Student L#	Student F#	SSN	DOB	Age	Race	Status of S Grade

Indicator 5 Targets

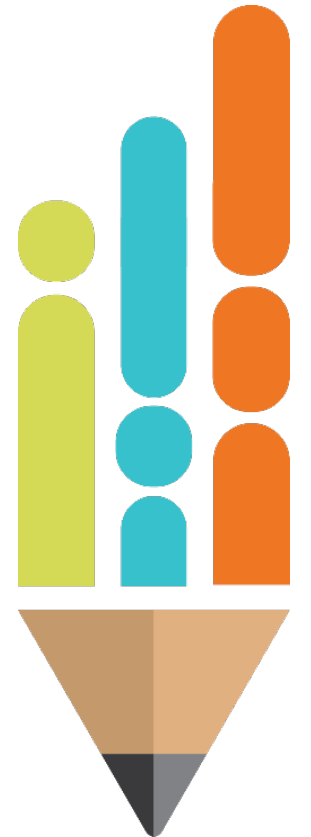
The target for the 2021-22 determination year will be 73.78% or more.

Targets by Determination Year



Contact Information

- Adam Rollins, *IDEA Data Manager*
 - Adam.Rollins@tn.gov
- Zachary Stone, *Senior Director of Data Analysis for Special Populations*
 - Zachary.Stone@tn.gov
- Sheryn Ordway, *EasyIEP Help Desk Coordinator*
 - Sheryn.Ordway@tn.gov



Feedback Survey

- Please take a moment to complete this feedback survey about today's presentation:
https://stateoftennessee.formstack.com/forms/fape_apr_indicators_3_5_feedback

