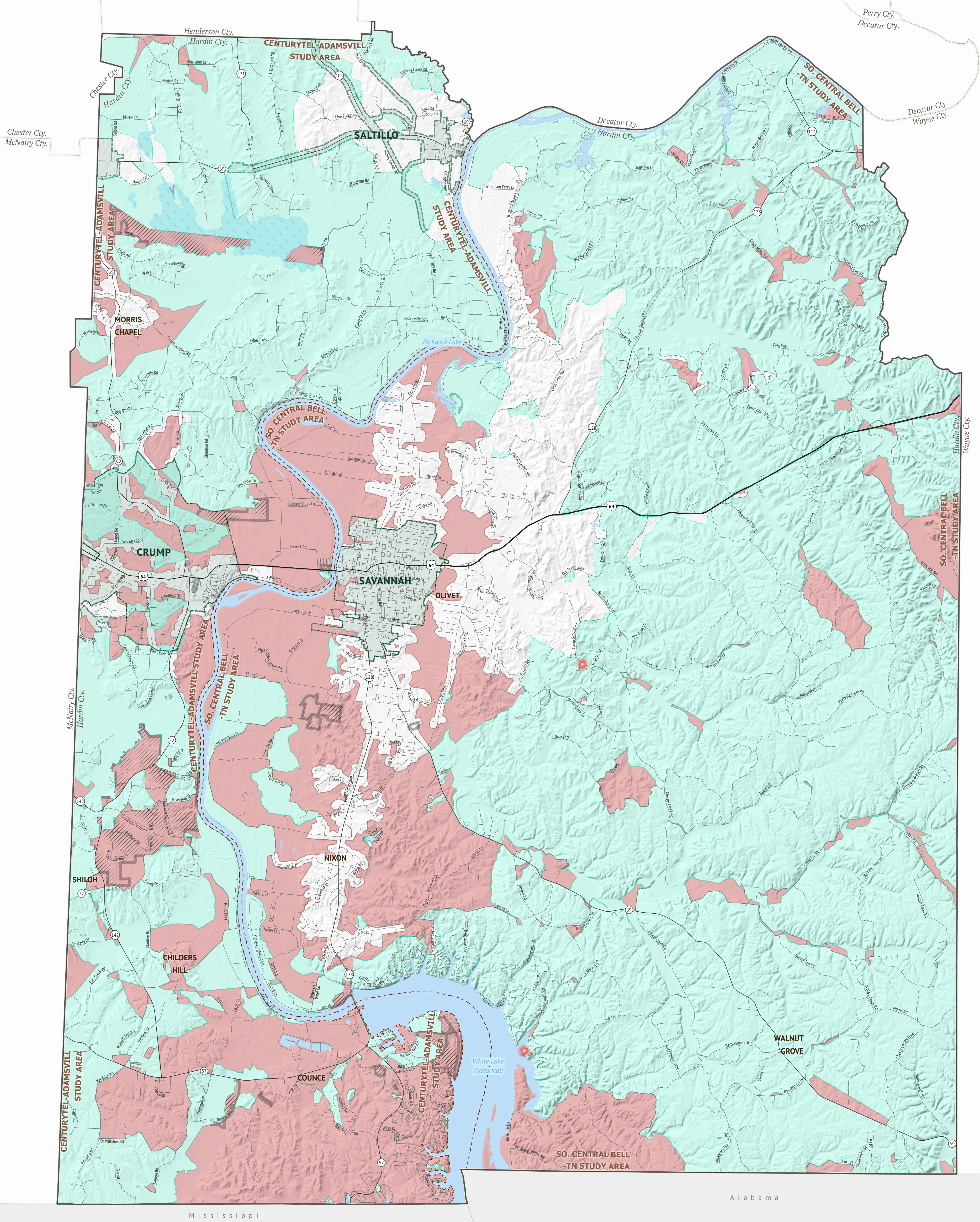
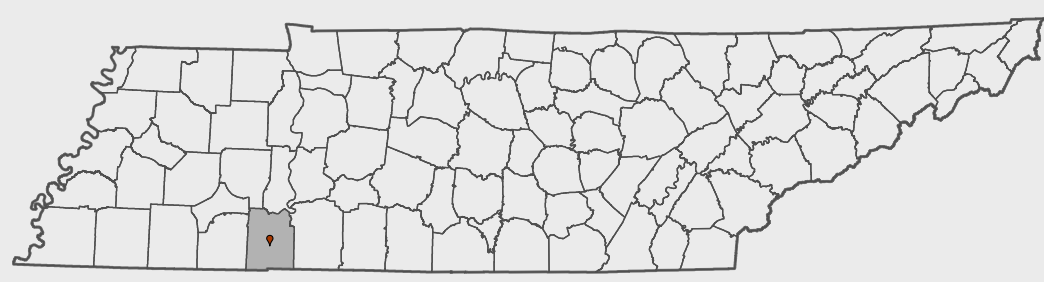


# LAST-MILE STATE GRANT PROGRAM ELIGIBILITY MAP



Published August 28, 2023  
for Application Period



Broadband data were developed from a combination of direct provider outreach and data collection, FCC Form 477 broadband deployment filings, verified consumer broadband feedback, and independent research conducted by Connected Nation. If a broadband provider was unwilling or unable to supply granular data and a detailed service area could not be developed, the provider service availability is represented by FCC Form 477 data, a format which tends to be overstated.

This map is not a guarantee of internet service availability. Mobile and satellite services may also be available.

The current FCC definition of broadband is a minimum speed of 25 Mbps (Megabits per second) download and 3 Mbps upload.

Please submit feedback regarding any possible mapping inaccuracies to [ECD.Communications.Office@tn.gov](mailto:ECD.Communications.Office@tn.gov). For further information on eligible and ineligible areas, please view the [interactive map](#).

- Resident Feedback (No Broadband; Speed Issue)
- ELIGIBLE - Unserved & Underserved
- INELIGIBLE - Federal/State Funded
- Federal or State Land (Eligible Only)
- Municipal Boundary
- Water

