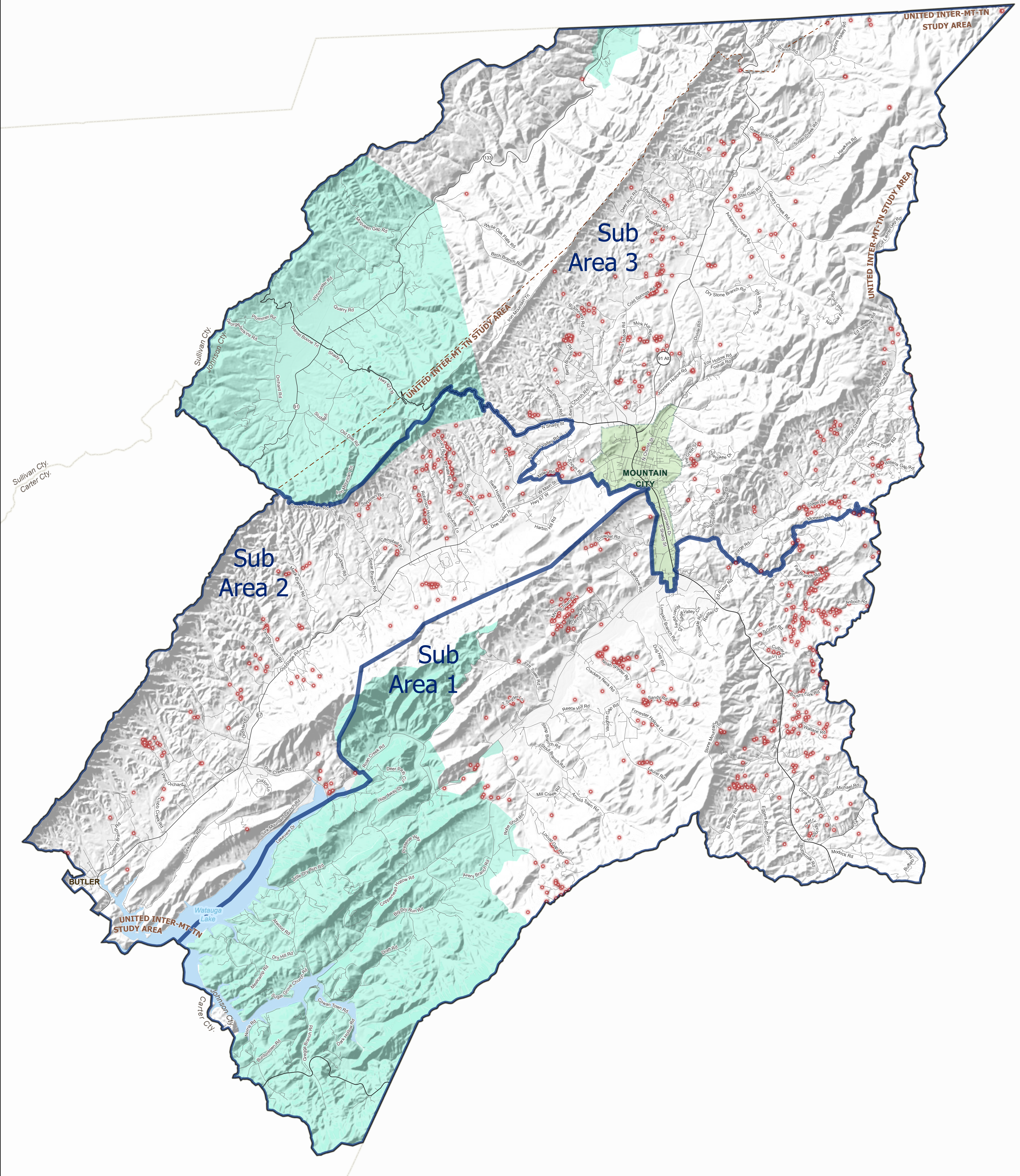







LAST-MILE STATE GRANT PROGRAM ROUND 2
 ELIGIBILITY MAP
JOHNSON COUNTY
 TENNESSEE



CAPITAL
 PROJECTS
 FUND



-  Municipal Boundary
-  Water
-  Ineligible Area - Federal/State Funded & Protected Borrower Area
-  Eligible Locations
-  Subdivision Bid Area

Published February 27, 2024
 for Application Period

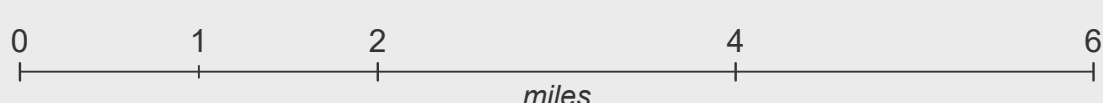
This map is not a guarantee of internet service availability. Mobile and satellite services may also be available.

NTIA's BEAD Program requirements of served broadband is reliable technologies of at 100 Mbps/20 Mbps and latency less than or equal to 100ms.

Locations with 100 Mbps/20 Mbps service are not eligible for this Program.

Please submit feedback regarding any possible mapping inaccuracies to ECD.Communications.Office@tn.gov. For further information on eligible and ineligible areas, please view the [interactive map](#).

Source: CostQuest Fabric / FCC BDC June 2023



© Copyright 2024, State of Tennessee, Nashville, TN