

FY 2014

**ANNUAL REPORT ON THE QUALITY OF
KEROSENE AND MOTOR FUEL IN
TENNESSEE**



**IN FULLFILLMENT OF THE REQUIREMENTS OF
TCA 47-18-1304**

**SUBMITTED BY THE
TENNESSEE DEPARTMENT OF AGRICULTURE
JULIUS JOHNSON, COMMISSIONER**



ANNUAL REPORT ON THE QUALITY OF KEROSENE AND MOTOR FUEL IN TENNESSEE

TABLE OF CONTENTS

- I. Effectiveness of Program**
 - a. Violation % Graphs**
 - b. State Wide Violation Graph**
 - c. Gasoline, Diesel, Kerosene Trend Graph**
- II. Consumer Complaints Summary**
- III. Inspection Data**
 - a. State Wide Summary**
 - b. TN Region Summary**
 - c. Product Summary**
 - d. Business Type Summary**
 - e. Inspection Type Summary**
 - f. County Distribution Data**
- IV. Enforcement Summary**

REPORTING CODE KEY

Product Codes

AG	-	Aviation Gasoline
D	-	Diesel
G	-	Gasoline
JF	-	Jet Fuel
K	-	Kerosene
RF	-	Racing Fuel
PD	-	Premium Diesel
BD	-	Biodiesel Blending Stock
LPG	-	Liquefied Petroleum Gas
DFE	-	Denatured Fuel Ethanol
E85	-	E-85 Fuel Ethanol
BDB	-	Biodiesel Blend

Grade Codes

MG	-	Mid Grade
PU	-	Premium
PUBS	-	Premium Blendstock
RL	-	Regular Leaded
RU	-	Regular Unleaded
RUBS	-	Regular Blendstock
1D	-	No. 1-D Diesel
2D	-	No. 2-D Diesel
2DLS	-	No. 2-D Low Sulfur
2D UL	-	No.2-D ULSD
1K	-	No. 1 Kerosene
2K	-	No. 2 Kerosene
JA	-	Jet A Turbine Fuel
80	-	80 Octane
100	-	100 Octane
100LL	-	100 Low Lead
BXX SXX	-	Biodiesel Blend (6% - 20 %) Sulfur 15 - 500
BDBS	-	S500 Biodiesel Blending Stock
BDBS1-	-	S15 Biodiesel Blending Stock
E-85	-	E-85 Ethanol Flex Fuel
E100	-	Denatured Fuel Ethanol

District Codes

W	-	West TN
M	-	Middle TN
E	-	East TN

Business Type

R	-	Retailer
T	-	Terminal
A	-	Airport
D	-	Distributor
M	-	Marina
O	-	Other

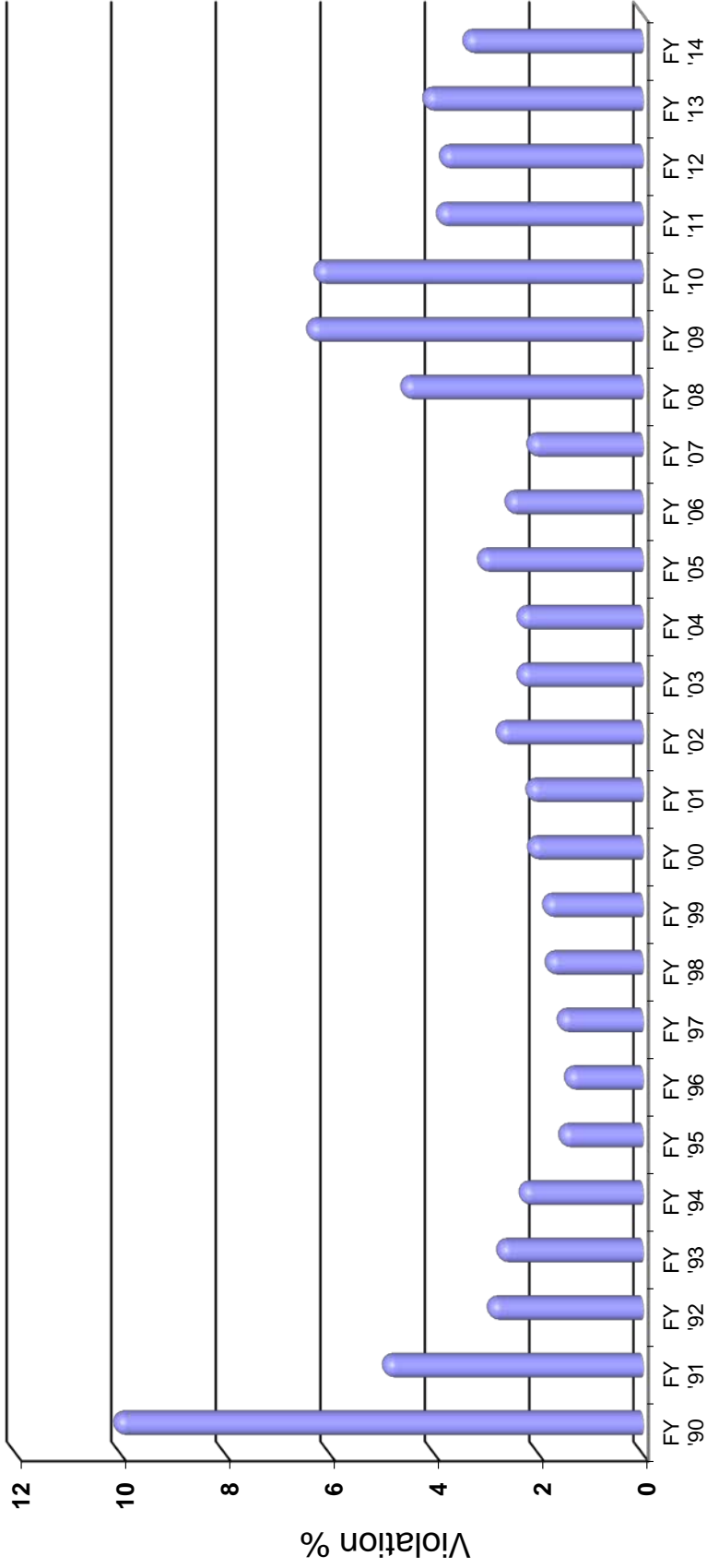
Inspection Type

R	-	Routine
C	-	Complaint
F	-	Follow-up
O	-	Office Request

TENNESSEE DEPARTMENT OF AGRICULTURE

ANNUAL SAMPLE VIOLATION SUMMARY

All Regulated Products Tested

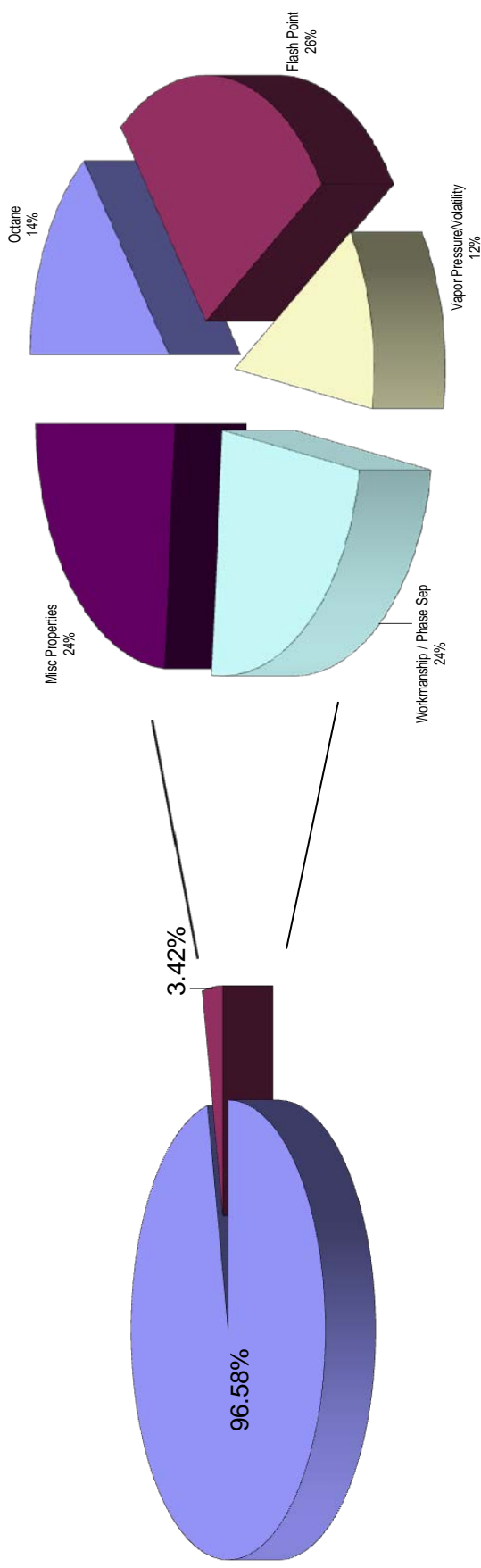


EFFECTIVENESS OF PROGRAM
Consumer & Industry Services

State Wide Violation Summary

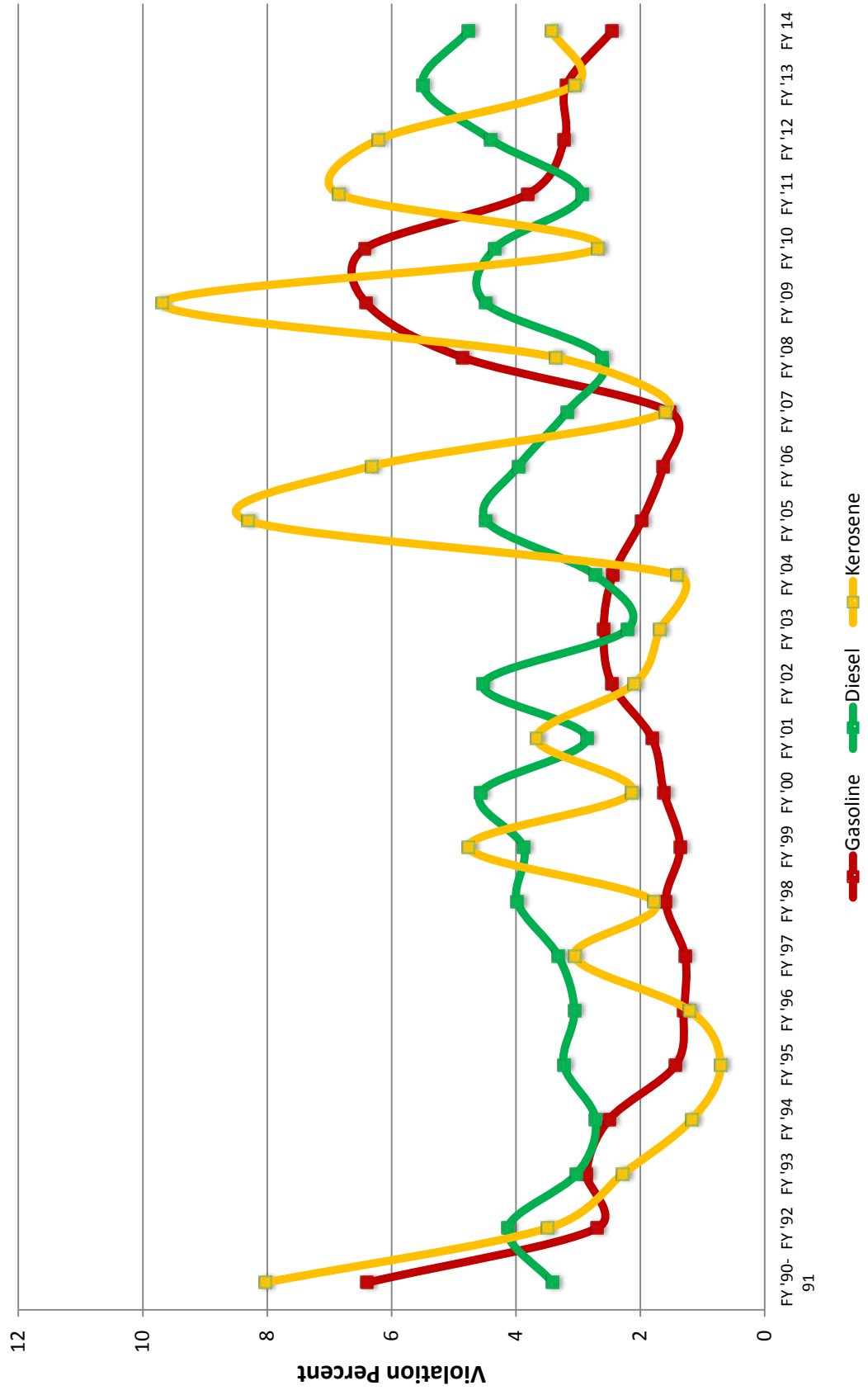
Violation Breakdown

July 1, 2013 - June 30, 2014



Tennessee Department of Agriculture
Consumer & Industry Services

Tennessee Department of Agriculture Gasoline, Diesel, Kerosene Breakout





TENNESSEE DEPARTMENT OF AGRICULTURE

Julius Johnson
COMMISSIONER

CONSUMER & INDUSTRY
SERVICES

MOTOR FUELS QUALITY PROGRAM
SUMMARY OF CONSUMER COMPLAINTS RECEIVED FROM
07/01/2013 – 06/30/2014

TOTAL NUMBER OF COMPLAINTS EVALUATED IN TIME FRAME: 103

Category Breakdown of Complaints :

Octane	2
Water	42
Alcohols	4
Contamination	50
MISC	5

The Department maintains a 24 hour toll free line (1-800-OCTANE1) for Consumer Complaints. It is promoted through media publicity and dispenser decals applied by inspectors performing Weights and Measures activities.

**Tennessee Department of Agriculture
State Wide Violation Analysis Report**

Data Sorted with All Parameters
Sample Date ranges from 07/01/2013 TO 06/30/2014

Today: 09/03/2014

Prod Code	Grade	Total Sample	Samples in Violation	%	Test Violation Total	Total Volume (Gals)	Total in Violation
AG							
	100LL	8	0	0.00	0	20,154.00	0.00
	Subtotal:	8	0	0.00	0	20,154.00	0.00
BD							
	1 BDBS S15	3	0	0.00	0	652,328.00	0.00
	Subtotal:	3	0	0.00	0	652,328.00	0.00
BDB							
	B20 S15	16	5	31.25	8	100,896.00	13,588.00
	B20 S500	1	0	0.00	0	2,139.00	0.00
	B6-20 S15	17	9	52.94	9	128,093.00	44,452.00
	B6-20 S500	1	0	0.00	0	1,301.00	0.00
	Subtotal:	35	14	40.00	17	232,429.00	58,040.00
D							
	2D S15	2069	99	4.78	102	20,146,150.00	265,944.00
	2D S500	9	0	0.00	0	391,580.00	0.00
	Subtotal:	2078	99	4.76	102	20,537,730.00	265,944.00
DFE							
	E100	17	0	0.00	0	4,928,111.00	0.00
	Subtotal:	17	0	0.00	0	4,928,111.00	0.00
E85							
	E-85	56	12	21.43	14	696,575.00	33,538.00
	Subtotal:	56	12	21.43	14	696,575.00	33,538.00
FO							
	No. 1 FO	2	0	0.00	0	3,546.00	0.00
	Subtotal:	2	0	0.00	0	3,546.00	0.00
G							
	MG	1189	25	2.10	31	3,466,645.50	70,940.00
	PU	1422	50	3.52	83	8,462,401.00	113,945.00
	PU BS	3	0	0.00	0	916,566.00	0.00
	RU	2388	48	2.01	98	24,581,349.00	351,665.00
	RU BS	11	0	0.00	0	9,839,629.00	0.00
	Subtotal:	5013	123	2.45	212	47,266,590.50	536,550.00
JF							
	JA	6	0	0.00	0	929,302.00	0.00
	Subtotal:	6	0	0.00	0	929,302.00	0.00
K							
	1K	185	5	2.70	7	1,309,148.00	2,730.00
	Subtotal:	185	5	2.70	7	1,309,148.00	2,730.00
Total:		7403	253	3.42	352	76,575,913.50	896,802.00

Test Violation Detail Listing

51	Antiknock Index	14.49%
11	Biodiesel Content	3.13%
1	Cetane Index	0.28%
2	Distillation 10%	0.57%
1	Distillation 50%	0.28%
3	Distillation 90%	0.85%
9	Distillation E.P.	2.56%
1	Distillation Residue	0.28%
3	Driveability Index	0.85%
27	Ethanol	7.67%
2	Ethanol (5501)	0.57%
92	Flash Point	26.14%
2	Lubricity	0.57%
1	Methanol (5501)	0.28%
6	Motor Octane Number	1.70%
5	Oxidation Stability	1.42%
33	Phase Separation	9.38%
3	Saybolt Color	0.85%
3	Sulfur	0.85%
23	Total Oxygen	6.53%
21	Vapor Pressure	5.97%
2	Vapor-Liquid Ratio	0.57%
9	Water	2.56%
6	Water & Sediment	1.70%
35	Workmanship	9.94%

Tennessee Department of Agriculture
District Violation Analysis Report

Data Sorted with All Parameters
Sample Date ranges from 07/01/2013 TO 06/30/2014

Today: 10/09/2014

District	Prod Code	Grade	Total Sample	Samples in Violation	%	Test Violation Total	Total Volume (Gals)	Total in Violation
East								
	AG							
		100LL	7	0	0.00	0	17,544.00	0.00
		Subtotal:	7	0	0.00	0	17,544.00	0.00
	BD							
		1 BDBS S15	2	0	0.00	0	627,328.00	0.00
		Subtotal:	2	0	0.00	0	627,328.00	0.00
	BDB							
		B20 S15	4	0	0.00	0	73,306.00	0.00
		B6-20 S15	1	1	100.00	1	4,563.00	4,563.00
		Subtotal:	5	1	20.00	1	77,869.00	4,563.00
	D							
		2D S15	890	32	3.60	33	15,121,684.00	64,989.00
		2D S500	5	0	0.00	0	385,539.00	0.00
		Subtotal:	895	32	3.58	33	15,507,223.00	64,989.00
	DFE							
		E100	14	0	0.00	0	4,245,311.00	0.00
		Subtotal:	14	0	0.00	0	4,245,311.00	0.00
	E85							
		E-85	11	0	0.00	0	23,471.00	0.00
		Subtotal:	11	0	0.00	0	23,471.00	0.00
	FO							
		No. 1 FO	2	0	0.00	0	3,546.00	0.00
		Subtotal:	2	0	0.00	0	3,546.00	0.00
	G							
		MG	420	8	1.90	10	1,100,855.00	23,440.00
		PU	508	11	2.17	17	6,267,047.00	24,828.00
		PU BS	2	0	0.00	0	614,670.00	0.00
		RU	919	11	1.20	21	17,439,709.00	40,486.00
		RU BS	10	0	0.00	0	9,479,815.00	0.00
		Subtotal:	1859	30	1.61	48	34,902,096.00	88,754.00
	JF							
		JA	6	0	0.00	0	929,302.00	0.00
		Subtotal:	6	0	0.00	0	929,302.00	0.00
	K							
		1K	56	2	3.57	3	1,201,173.00	2,004.00
		Subtotal:	56	2	3.57	3	1,201,173.00	2,004.00
Total:			2857	65	2.28	85	57,534,863.00	160,310.00

Test Violation Detail Listing

12	Antiknock Index	14.12%
1	Biodiesel Content	1.18%
1	Distillation 10%	1.18%
2	Distillation E.P.	2.35%
9	Ethanol	10.59%
29	Flash Point	34.12%
1	Lubricity	1.18%
2	Motor Octane Number	2.35%
6	Phase Separation	7.06%
1	Saybolt Color	1.18%
3	Total Oxygen	3.53%
7	Vapor Pressure	8.24%
3	Water & Sediment	3.53%
8	Workmanship	9.41%

District	Prod Code	Grade	Total Sample	Samples in Violation	%	Test Violation Total	Total Volume (Gals)	Total in Violation
Middle								
	AG							
		100LL	1	0	0.00	0	2,610.00	0.00
		Subtotal:	1	0	0.00	0	2,610.00	0.00
	BDB							
		B20 S15	11	4	36.36	7	27,042.00	13,040.00
		B20 S500	1	0	0.00	0	2,139.00	0.00
		B6-20 S15	15	7	46.67	7	118,148.00	34,507.00
		B6-20 S500	1	0	0.00	0	1,301.00	0.00
		Subtotal:	28	11	39.29	14	148,630.00	47,547.00
	D							
		2D S15	822	50	6.08	51	3,664,241.00	173,201.00
		2D S500	4	0	0.00	0	6,041.00	0.00
		Subtotal:	826	50	6.05	51	3,670,282.00	173,201.00
	DFE							
		E100	2	0	0.00	0	32,800.00	0.00
		Subtotal:	2	0	0.00	0	32,800.00	0.00
	E85							
		E-85	43	11	25.58	12	122,556.00	32,442.00
		Subtotal:	43	11	25.58	12	122,556.00	32,442.00
	G							
		MG	392	5	1.28	6	1,450,892.50	16,707.00
		PU	449	18	4.01	32	1,243,909.00	33,797.00
		PU BS	1	0	0.00	0	301,896.00	0.00
		RU	920	25	2.72	53	4,550,275.00	233,059.00
		RU BS	1	0	0.00	0	359,814.00	0.00
		Subtotal:	1763	48	2.72	91	7,906,786.50	283,563.00
	K							
		1K	91	3	3.30	4	83,211.00	726.00

Subtotal:	91	3	3.30	4	83,211.00	726.00
------------------	----	---	------	---	-----------	--------

Total:	2754	123	4.47	172	11,966,875.50	537,479.00
---------------	------	-----	------	-----	---------------	------------

Test Violation Detail Listing

17	Antiknock Index	9.88%
8	Biodiesel Content	4.65%
1	Distillation 10%	0.58%
1	Distillation 50%	0.58%
3	Distillation 90%	1.74%
7	Distillation E.P.	4.07%
1	Distillation Residue	0.58%
3	Driveability Index	1.74%
6	Ethanol	3.49%
2	Ethanol (5501)	1.16%
48	Flash Point	27.91%
1	Lubricity	0.58%
1	Methanol (5501)	0.58%
3	Motor Octane Number	1.74%
4	Oxidation Stability	2.33%
17	Phase Separation	9.88%
2	Saybolt Color	1.16%
3	Sulfur	1.74%
8	Total Oxygen	4.65%
9	Vapor Pressure	5.23%
8	Water	4.65%
2	Water & Sediment	1.16%
17	Workmanship	9.88%

District	Prod Code	Grade	Total Sample	Samples in Violation	%	Test Violation Total	Total Volumn (Gals)	Total in Violation
West								
	BD							
		1 BDDB S15	1	0	0.00	0	25,000.00	0.00
		Subtotal:	1	0	0.00	0	25,000.00	0.00
	BDB							
		B20 S15	1	1	100.00	1	548.00	548.00
		B6-20 S15	1	1	100.00	1	5,382.00	5,382.00
		Subtotal:	2	2	100.00	2	5,930.00	5,930.00
	D							
		2D S15	357	17	4.76	18	1,360,225.00	27,754.00
		Subtotal:	357	17	4.76	18	1,360,225.00	27,754.00
	DFE							
		E100	1	0	0.00	0	650,000.00	0.00
		Subtotal:	1	0	0.00	0	650,000.00	0.00
	E85							
		E-85	2	1	50.00	2	550,548.00	1,096.00
		Subtotal:	2	1	50.00	2	550,548.00	1,096.00

G

MG	377	12	3.18	15	914,898.00	30,793.00
PU	465	21	4.52	34	951,445.00	55,320.00
RU	549	12	2.19	24	2,591,365.00	78,120.00
Subtotal:	1391	45	3.24	73	4,457,708.00	164,233.00

K

1K	38	0	0.00	0	24,764.00	0.00
Subtotal:	38	0	0.00	0	24,764.00	0.00

Total:	1792	65	3.63	95	7,074,175.00	199,013.00
---------------	------	----	------	----	--------------	------------

Test Violation Detail Listing

22	Antiknock Index	23.16%
2	Biodiesel Content	2.11%
1	Cetane Index	1.05%
12	Ethanol	12.63%
15	Flash Point	15.79%
1	Motor Octane Number	1.05%
1	Oxidation Stability	1.05%
10	Phase Separation	10.53%
12	Total Oxygen	12.63%
5	Vapor Pressure	5.26%
2	Vapor-Liquid Ratio	2.11%
1	Water	1.05%
1	Water & Sediment	1.05%
10	Workmanship	10.53%

**Tennessee Department of Agriculture
Product Violation Analysis Report**

Data Sorted with All Parameters
Sample Date ranges from 07/01/2013 TO 06/30/2014

Today: 09/03/2014

Prod Code	Grade	Total Samples	Samples in Violation	%	Test Violation Total	Total Volumn (Gals)	Total in Violation
Aviation Gasoline							
	100LL	8	0	0.00	0	20,154	0
	Subtotal:	8	0	0.00	0	20,154	0

**Tennessee Department of Agriculture
Product Violation Analysis Report**

Data Sorted with All Parameters
Sample Date ranges from 07/01/2013 TO 06/30/2014

Today: 09/03/2014

Prod Code	Grade	Total Samples	Samples in Violation	%	Test Violation Total	Total Volumn (Gals)	Total in Violation
Biodiesel							
	1 BDDBS S15	3	0	0.00	0	652,328	0
	Subtotal:	3	0	0.00	0	652,328	0

**Tennessee Department of Agriculture
Product Violation Analysis Report**

Data Sorted with All Parameters
Sample Date ranges from 07/01/2013 TO 06/30/2014

Today: 09/03/2014

Prod Code	Grade	Total Samples	Samples in Violation	%	Test Violation Total	Total Volumn (Gals)	Total in Violation
Biodiesel Blend							
	B20 S15	16	5	31.25	8	100,896	13,588
	B20 S500	1	0	0.00	0	2,139	0
	B6-20 S15	18	9	50.00	9	129,093	44,452
	B6-20 S500	1	0	0.00	0	1,301	0
	Subtotal:	36	14	38.89	17	233,429	58,040

Test Violation Detail Listing

8	Biodiesel Content	47.06%
3	Flash Point	17.65%
5	Oxidation Stability	29.41%
1	Water & Sediment	5.88%

**Tennessee Department of Agriculture
Product Violation Analysis Report**

Data Sorted with All Parameters
Sample Date ranges from 07/01/2013 TO 06/30/2014

Today: 09/03/2014

Prod Code	Grade	Total Samples	Samples in Violation	%	Test Violation Total	Total Volumn (Gals)	Total in Violation
Denat. Fuel EtOH							
	E100	17	0	0.00	0	4,928,111	0

Subtotal: 17 0 0.00 0 4,928,111 0

Tennessee Department of Agriculture
Product Violation Analysis Report

Data Sorted with All Parameters
Sample Date ranges from 07/01/2013 TO 06/30/2014

Today: 09/03/2014

Prod Code	Grade	Total Samples	Samples in Violation	%	Test Violation Total	Total Volumn (Gals)	Total in Violation
Diesel							
	2D S15	2071	99	4.78	102	20,148,454	265,944
	2D S500	9	0	0.00	0	391,580	0
Subtotal:		2080	99	4.76	102	20,540,034	265,944

Test Violation Detail Listing

3	Biodiesel Content	2.94%
1	Cetane Index	0.98%
88	Flash Point	86.27%
2	Lubricity	1.96%
3	Sulfur	2.94%
5	Water & Sediment	4.90%

Tennessee Department of Agriculture
Product Violation Analysis Report

Data Sorted with All Parameters
Sample Date ranges from 07/01/2013 TO 06/30/2014

Today: 09/03/2014

Prod Code	Grade	Total Samples	Samples in Violation	%	Test Violation Total	Total Volumn (Gals)	Total in Violation
E-85 Fuel Ethanol							
	E-85	56	12	21.43	14	696,575	33,538
Subtotal:		56	12	21.43	14	696,575	33,538

Test Violation Detail Listing

2	Ethanol (5501)	14.29%
1	Methanol (5501)	7.14%
2	Vapor Pressure	14.29%
9	Water	64.29%

Tennessee Department of Agriculture
Product Violation Analysis Report

Data Sorted with All Parameters
Sample Date ranges from 07/01/2013 TO 06/30/2014

Today: 09/03/2014

Prod Code	Grade	Total Samples	Samples in Violation	%	Test Violation Total	Total Volumn (Gals)	Total in Violation
Fuel Oils							
	No. 1 FO	2	0	0.00	0	3,546	0
Subtotal:		2	0	0.00	0	3,546	0

**Tennessee Department of Agriculture
Product Violation Analysis Report**

Data Sorted with All Parameters
Sample Date ranges from 07/01/2013 TO 06/30/2014

Today: 09/03/2014

Prod Code	Grade	Total Samples	Samples in Violation	%	Test Violation Total	Total Volumn (Gals)	Total in Violation
Gasoline							
	MG	1190	25	2.10	31	3,469,722	70,940
	PU	1424	50	3.51	83	8,465,182	113,945
	PU BS	3	0	0.00	0	916,566	0
	RU	2388	48	2.01	98	24,581,349	351,665
	RU BS	11	0	0.00	0	9,839,629	0
	Subtotal:	5016	123	2.45	212	47,272,448	536,550

Test Violation Detail Listing

51	Antiknock Index	24.06%
1	Distillation 10%	0.47%
1	Distillation 50%	0.47%
3	Distillation 90%	1.42%
7	Distillation E.P.	3.30%
1	Distillation Residue	0.47%
3	Driveability Index	1.42%
27	Ethanol	12.74%
6	Motor Octane Number	2.83%
33	Phase Separation	15.57%
23	Total Oxygen	10.85%
19	Vapor Pressure	8.96%
2	Vapor-Liquid Ratio	0.94%
35	Workmanship	16.51%

**Tennessee Department of Agriculture
Product Violation Analysis Report**

Data Sorted with All Parameters
Sample Date ranges from 07/01/2013 TO 06/30/2014

Today: 09/03/2014

Prod Code	Grade	Total Samples	Samples in Violation	%	Test Violation Total	Total Volumn (Gals)	Total in Violation
Jet Fuel							
	JA	6	0	0.00	0	929,302	0
	Subtotal:	6	0	0.00	0	929,302	0

**Tennessee Department of Agriculture
Product Violation Analysis Report**

Data Sorted with All Parameters
Sample Date ranges from 07/01/2013 TO 06/30/2014

Today: 09/03/2014

Prod Code	Grade	Total Samples	Samples in Violation	%	Test Violation Total	Total Volumn (Gals)	Total in Violation
Kerosene							
	1K	185	5	2.70	7	1,309,148	2,730

Test Violation Detail Listing

1	Distillation 10%	14.29%
2	Distillation E.P.	28.57%
1	Flash Point	14.29%
3	Saybolt Color	42.86%

**Tennessee Department of Agriculture
Business Type Violation Analysis Report**

Data Sorted with All Parameters
Sample Date ranges from 07/01/2013 TO 06/30/2014

Today: 10/09/2014

Business Type	Prod Code	Grade	Total Sample	Samples in Violation	%	Test Violation Total	Total Volumn (Gals)	Total in Violation
Airport								
	AG							
		100LL	2	0	0.00	0	2,902.00	0.00
		Subtotal:	2	0	0.00	0	2,902.00	0.00
	JF							
		JA	2	0	0.00	0	3,163.00	0.00
		Subtotal:	2	0	0.00	0	3,163.00	0.00
	Total:		4	0	0.00	0	6,065.00	0.00

Business Type	Prod Code	Grade	Total Sample	Samples in Violation	%	Test Violation Total	Total Volumn (Gals)	Total in Violation
Distributor								
	D							
		2D S15	6	0	0.00	0	45,791.00	0.00
		Subtotal:	6	0	0.00	0	45,791.00	0.00
	G							
		MG	1	0	0.00	0	2,795.00	0.00
		PU	2	0	0.00	0	4,653.00	0.00
		RU	6	0	0.00	0	19,808.00	0.00
		Subtotal:	9	0	0.00	0	27,256.00	0.00
	Total:		15	0	0.00	0	73,047.00	0.00

Business Type	Prod Code	Grade	Total Sample	Samples in Violation	%	Test Violation Total	Total Volumn (Gals)	Total in Violation
Marina								
	D							
		2D S15	5	1	20.00	1	8,433.00	1,107.00
		Subtotal:	5	1	20.00	1	8,433.00	1,107.00
	G							
		MG	19	1	5.26	1	40,316.00	658.00
		PU	16	0	0.00	0	34,927.00	0.00
		RU	29	1	3.45	1	41,846.00	152.00
		Subtotal:	64	2	3.13	2	117,089.00	810.00
	Total:		69	3	4.35	3	125,522.00	1,917.00

Test Violation Detail Listing

1	Antiknock Index	33.33%
1	Flash Point	33.33%
1	Vapor Pressure	33.33%

Business Type	Prod Code	Grade	Total Sample	Samples in Violation	%	Test Violation Total	Total Volumn (Gals)	Total in Violation
---------------	-----------	-------	--------------	----------------------	---	----------------------	---------------------	--------------------

Other								
D								
	2D S15		2	0	0.00	0	5,472.00	0.00
	Subtotal:		2	0	0.00	0	5,472.00	0.00
G								
	MG		1	0	0.00	0	100.00	0.00
	RU		1	1	100.00	2	0.00	0.00
	Subtotal:		2	1	50.00	2	100.00	0.00
	Total:		4	1	25.00	2	5,572.00	0.00

Test Violation Detail Listing

1	Phase Separation	50.00%
1	Workmanship	50.00%

Business Type	Prod Code	Grade	Total Sample	Samples in Violation	%	Test Violation Total	Total Volumn (Gals)	Total in Violation
---------------	-----------	-------	--------------	----------------------	---	----------------------	---------------------	--------------------

Retailer								
AG								
	100LL		6	0	0.00	0	17,252.00	0.00
	Subtotal:		6	0	0.00	0	17,252.00	0.00
BD								
	1 BDBS S15		1	0	0.00	0	121,900.00	0.00
	Subtotal:		1	0	0.00	0	121,900.00	0.00
BDB								
	B20 S15		16	5	31.25	8	100,896.00	13,588.00
	B20 S500		1	0	0.00	0	2,139.00	0.00
	B6-20 S15		17	9	52.94	9	128,093.00	44,452.00
	B6-20 S500		1	0	0.00	0	1,301.00	0.00
	Subtotal:		35	14	40.00	17	232,429.00	58,040.00
D								
	2D S15		2046	98	4.79	101	12,721,988.00	264,837.00
	2D S500		8	0	0.00	0	24,080.00	0.00
	Subtotal:		2054	98	4.77	101	12,746,068.00	264,837.00
DFE								
	E100		9	0	0.00	0	2,341,918.00	0.00
	Subtotal:		9	0	0.00	0	2,341,918.00	0.00
E85								
	E-85		56	12	21.43	14	696,575.00	33,538.00
	Subtotal:		56	12	21.43	14	696,575.00	33,538.00
FO								
	No. 1 FO		2	0	0.00	0	3,546.00	0.00
	Subtotal:		2	0	0.00	0	3,546.00	0.00
G								
	MG		1168	24	2.05	30	3,423,434.50	70,282.00
	PU		1394	50	3.59	83	5,493,935.00	113,945.00
	RU		2342	46	1.96	95	19,059,738.00	351,513.00
	RU BS		3	0	0.00	0	2,221,506.00	0.00

	Subtotal:	4907	120	2.45	208	30,198,613.50	535,740.00
JF							
	JA	3	0	0.00	0	643,789.00	0.00
	Subtotal:	3	0	0.00	0	643,789.00	0.00
K							
	1K	184	5	2.72	7	723,920.00	2,730.00
	Subtotal:	184	5	2.72	7	723,920.00	2,730.00
Total:		7257	249	3.43	347	47,726,010.50	894,885.00

Test Violation Detail Listing

50	Antiknock Index	14.41%
11	Biodiesel Content	3.17%
1	Cetane Index	0.29%
2	Distillation 10%	0.58%
1	Distillation 50%	0.29%
3	Distillation 90%	0.86%
9	Distillation E.P.	2.59%
1	Distillation Residue	0.29%
3	Driveability Index	0.86%
27	Ethanol	7.78%
2	Ethanol (5501)	0.58%
91	Flash Point	26.22%
2	Lubricity	0.58%
1	Methanol (5501)	0.29%
6	Motor Octane Number	1.73%
5	Oxidation Stability	1.44%
32	Phase Separation	9.22%
3	Saybolt Color	0.86%
3	Sulfur	0.86%
23	Total Oxygen	6.63%
20	Vapor Pressure	5.76%
2	Vapor-Liquid Ratio	0.58%
9	Water	2.59%
6	Water & Sediment	1.73%
34	Workmanship	9.80%

Business Type	Prod Code	Grade	Total Sample	Samples in Violation	%	Test Violation Total	Total Volumn (Gals)	Total in Violation
Terminal								
	BD							
		1 BDDBS S15	2	0	0.00	0	530,428.00	0.00
		Subtotal:	2	0	0.00	0	530,428.00	0.00
	D							
		2D S15	10	0	0.00	0	7,364,466.00	0.00
		2D S500	1	0	0.00	0	367,500.00	0.00
		Subtotal:	11	0	0.00	0	7,731,966.00	0.00
	DFE							

	E100	8	0	0.00	0	2,586,193.00	0.00
	Subtotal:	8	0	0.00	0	2,586,193.00	0.00
G							
	PU	10	0	0.00	0	2,928,886.00	0.00
	PU BS	3	0	0.00	0	916,566.00	0.00
	RU	10	0	0.00	0	5,459,957.00	0.00
	RU BS	8	0	0.00	0	7,618,123.00	0.00
	Subtotal:	31	0	0.00	0	16,923,532.00	0.00
JF							
	JA	1	0	0.00	0	282,350.00	0.00
	Subtotal:	1	0	0.00	0	282,350.00	0.00
K							
	1K	1	0	0.00	0	585,228.00	0.00
	Subtotal:	1	0	0.00	0	585,228.00	0.00
Total:		54	0	0.00	0	28,639,697.00	0.00

**Tennessee Department of Agriculture
Inspection Type Violation Analysis Report**

Data Sorted with All Parameters
Sample Date ranges from 07/01/2013 TO 06/30/2014

Today: 09/03/2014

Inspection Type	Prod Code	Grade	Total Sample	Samples in Violation	%	Test Violation Total	Total Volumn (Gals)	Total in Violation
Complaint								
	BDB							
		B20 S15	1	0	0.00	0	2,465.00	0.00
		Subtotal:	1	0	0.00	0	2,465.00	0.00
	D							
		2D S15	25	4	16.00	4	71,254.00	10,479.00
		2D S500	1	0	0.00	0	1,177.00	0.00
		Subtotal:	26	4	15.38	4	72,431.00	10,479.00
	G							
		MG	7	0	0.00	0	15,792.00	0.00
		PU	20	3	15.00	7	31,642.00	5,682.00
		RU	37	8	21.62	22	212,071.00	130,548.00
		Subtotal:	64	11	17.19	29	259,505.00	136,230.00
	K							
		1K	2	1	50.00	1	526.00	67.00
		Subtotal:	2	1	50.00	1	526.00	67.00
	Total:		93	16	17.20	34	334,927.00	146,776.00

Test Violation Detail Listing

2	Antiknock Index	5.88%
1	Distillation 90%	2.94%
1	Distillation E.P.	2.94%
1	Distillation Residue	2.94%
1	Driveability Index	2.94%
2	Flash Point	5.88%
2	Motor Octane Number	5.88%
10	Phase Separation	29.41%
1	Saybolt Color	2.94%
1	Vapor Pressure	2.94%
2	Water & Sediment	5.88%
10	Workmanship	29.41%

Inspection Type	Prod Code	Grade	Total Sample	Samples in Violation	%	Test Violation Total	Total Volumn (Gals)	Total in Violation
Follow-Up								
	BDB							
		B6-20 S15	1	0	0.00	0	1,593.00	0.00
		Subtotal:	1	0	0.00	0	1,593.00	0.00
	D							
		2D S15	31	6	19.35	6	68,404.00	12,836.00
		Subtotal:	31	6	19.35	6	68,404.00	12,836.00

E85	E-85	4	0	0.00	0	12,305.00	0.00
	Subtotal:	4	0	0.00	0	12,305.00	0.00
G	MG	10	2	20.00	2	29,888.00	2,898.00
	PU	21	4	19.05	7	41,006.00	12,223.00
	RU	17	1	5.88	2	62,007.00	4,998.00
	Subtotal:	48	7	14.58	11	132,901.00	20,119.00
K	1K	1	0	0.00	0	261.00	0.00
	Subtotal:	1	0	0.00	0	261.00	0.00
Total:		85	13	15.29	17	215,464.00	32,955.00

Test Violation Detail Listing

3	Antiknock Index	17.65%
2	Ethanol	11.76%
6	Flash Point	35.29%
2	Phase Separation	11.76%
2	Total Oxygen	11.76%
2	Workmanship	11.76%

Inspection Type	Prod Code	Grade	Total Sample	Samples in Violation	%	Test Violation Total	Total Volumn (Gals)	Total in Violation
Office Request								
	BD	1 BDBS S15	1	0	0.00	0	25,000.00	0.00
		Subtotal:	1	0	0.00	0	25,000.00	0.00
	D	2D S15	10	1	10.00	1	838,231.00	395.00
		Subtotal:	10	1	10.00	1	838,231.00	395.00
	G	MG	2	0	0.00	0	260.00	0.00
		PU	3	0	0.00	0	305,657.00	0.00
		PU BS	1	0	0.00	0	301,896.00	0.00
		RU	6	1	16.67	2	195,536.00	0.00
		RU BS	1	0	0.00	0	359,814.00	0.00
		Subtotal:	13	1	7.69	2	1,163,163.00	0.00
Total:			24	2	8.33	3	2,026,394.00	395.00

Test Violation Detail Listing

1	Flash Point	33.33%
1	Phase Separation	33.33%
1	Workmanship	33.33%

Inspection Type	Prod Code	Grade	Total Sample	Samples in Violation	%	Test Violation Total	Total Volumn (Gals)	Total in Violation
Routine								
	AG							

	100LL	8	0	0.00	0	20,154.00	0.00
	Subtotal:	8	0	0.00	0	20,154.00	0.00
BD							
	1 BDBS S15	2	0	0.00	0	627,328.00	0.00
	Subtotal:	2	0	0.00	0	627,328.00	0.00
BDB							
	B20 S15	15	5	33.33	8	98,431.00	13,588.00
	B20 S500	1	0	0.00	0	2,139.00	0.00
	B6-20 S15	16	9	56.25	9	126,500.00	44,452.00
	B6-20 S500	1	0	0.00	0	1,301.00	0.00
	Subtotal:	33	14	42.42	17	228,371.00	58,040.00
D							
	2D S15	2003	88	4.39	91	19,168,261.00	242,234.00
	2D S500	8	0	0.00	0	390,403.00	0.00
	Subtotal:	2011	88	4.38	91	19,558,664.00	242,234.00
DFE							
	E100	17	0	0.00	0	4,928,111.00	0.00
	Subtotal:	17	0	0.00	0	4,928,111.00	0.00
E85							
	E-85	52	12	23.08	14	684,270.00	33,538.00
	Subtotal:	52	12	23.08	14	684,270.00	33,538.00
FO							
	No. 1 FO	2	0	0.00	0	3,546.00	0.00
	Subtotal:	2	0	0.00	0	3,546.00	0.00
G							
	MG	1170	23	1.97	29	3,420,705.50	68,042.00
	PU	1378	43	3.12	69	8,084,096.00	96,040.00
	PU BS	2	0	0.00	0	614,670.00	0.00
	RU	2328	38	1.63	72	24,111,735.00	216,119.00
	RU BS	10	0	0.00	0	9,479,815.00	0.00
	Subtotal:	4888	104	2.13	170	45,711,021.50	380,201.00
JF							
	JA	6	0	0.00	0	929,302.00	0.00
	Subtotal:	6	0	0.00	0	929,302.00	0.00
K							
	1K	182	4	2.20	6	1,308,361.00	2,663.00
	Subtotal:	182	4	2.20	6	1,308,361.00	2,663.00
Total:		7201	222	3.08	298	73,999,128.50	716,676.00

Test Violation Detail Listing

46	Antiknock Index	15.44%
11	Biodiesel Content	3.69%
1	Cetane Index	0.34%
2	Distillation 10%	0.67%
1	Distillation 50%	0.34%
2	Distillation 90%	0.67%

8	Distillation E.P.	2.68%
2	Driveability Index	0.67%
25	Ethanol	8.39%
2	Ethanol (5501)	0.67%
83	Flash Point	27.85%
2	Lubricity	0.67%
1	Methanol (5501)	0.34%
4	Motor Octane Number	1.34%
5	Oxidation Stability	1.68%
20	Phase Separation	6.71%
2	Saybolt Color	0.67%
3	Sulfur	1.01%
21	Total Oxygen	7.05%
20	Vapor Pressure	6.71%
2	Vapor-Liquid Ratio	0.67%
9	Water	3.02%
4	Water & Sediment	1.34%
22	Workmanship	7.38%

Tennessee Department of Agriculture
County Violation Analysis Report

Data Sorted with All Parameters
Sample Date ranges from 07/01/2013 TO 06/30/2014

Today: 10/09/2014

County	Prod Code	Grade	Total Sample	Samples in Violation	%	Test Violation Total	Total Volume (Gals)	Total in Violation
1 - ANDERSON								
		D						
		2D S15	21	1	4.76	1	43,262.00	7,899.00
		Subtotal:	21	1	4.76	1	43,262.00	7,899.00
		E85						
		E-85	2	0	0.00	0	5,105.00	0.00
		Subtotal:	2	0	0.00	0	5,105.00	0.00
		FO						
		No. 1 FO	1	0	0.00	0	2,004.00	0.00
		Subtotal:	1	0	0.00	0	2,004.00	0.00
		G						
		MG	20	2	10.00	2	65,813.00	11,535.00
		PU	17	2	11.76	3	38,774.00	8,706.00
		RU	24	0	0.00	0	131,914.00	0.00
		Subtotal:	61	4	6.56	5	236,501.00	20,241.00
		Total:	85	5	5.88	6	286,872.00	28,140.00
2 - BEDFORD								
		BDB						
		B6-20 S15	1	0	0.00	0	331.00	0.00
		Subtotal:	1	0	0.00	0	331.00	0.00
		D						
		2D S15	16	0	0.00	0	58,005.00	0.00
		Subtotal:	16	0	0.00	0	58,005.00	0.00
		G						
		MG	9	0	0.00	0	14,708.00	0.00
		PU	10	2	20.00	4	13,972.00	4,620.00
		RU	19	2	10.53	2	57,816.00	807.00
		Subtotal:	38	4	10.53	6	86,496.00	5,427.00
		K						
		1K	2	0	0.00	0	1,566.00	0.00
		Subtotal:	2	0	0.00	0	1,566.00	0.00
		Total:	57	4	7.02	6	146,398.00	5,427.00
3 - BENTON								
		D						
		2D S15	10	0	0.00	0	52,778.00	0.00
		Subtotal:	10	0	0.00	0	52,778.00	0.00
		G						
		MG	6	0	0.00	0	10,056.00	0.00
		PU	5	0	0.00	0	12,316.00	0.00

	RU	9	0	0.00	0	32,038.00	0.00
	Subtotal:	20	0	0.00	0	54,410.00	0.00
K							
	1K	2	0	0.00	0	3,087.00	0.00
	Subtotal:	2	0	0.00	0	3,087.00	0.00
Total:		32	0	0.00	0	110,275.00	0.00

4 - BLEDSOE

D							
	2D S15	11	1	9.09	1	14,649.00	536.00
	Subtotal:	11	1	9.09	1	14,649.00	536.00
G							
	PU	3	0	0.00	0	3,223.00	0.00
	RU	14	0	0.00	0	24,435.00	0.00
	Subtotal:	17	0	0.00	0	27,658.00	0.00
Total:		28	1	3.57	1	42,307.00	536.00

5 - Blount

D							
	2D S15	46	1	2.17	1	95,817.00	6,000.00
	Subtotal:	46	1	2.17	1	95,817.00	6,000.00
G							
	MG	15	0	0.00	0	39,450.00	0.00
	PU	14	0	0.00	0	29,065.00	0.00
	RU	57	0	0.00	0	253,182.00	0.00
	Subtotal:	86	0	0.00	0	321,697.00	0.00
K							
	1K	3	0	0.00	0	2,885.00	0.00
	Subtotal:	3	0	0.00	0	2,885.00	0.00
Total:		135	1	0.74	1	420,399.00	6,000.00

6 - BRADLEY

D							
	2D S15	36	1	2.78	1	105,172.00	1,888.00
	Subtotal:	36	1	2.78	1	105,172.00	1,888.00
E85							
	E-85	2	0	0.00	0	4,411.00	0.00
	Subtotal:	2	0	0.00	0	4,411.00	0.00
G							
	MG	11	0	0.00	0	26,226.00	0.00
	PU	11	0	0.00	0	20,344.00	0.00
	RU	51	0	0.00	0	219,864.00	0.00
	Subtotal:	73	0	0.00	0	266,434.00	0.00
K							
	1K	1	0	0.00	0	392.00	0.00
	Subtotal:	1	0	0.00	0	392.00	0.00
Total:		112	1	0.89	1	376,409.00	1,888.00

7 - Campbell

AG	100LL	1	0	0.00	0	707.00	0.00
	Subtotal:	1	0	0.00	0	707.00	0.00
D	2D S15	15	1	6.67	1	26,183.00	1,609.00
	2D S500	1	0	0.00	0	7,300.00	0.00
	Subtotal:	16	1	6.25	1	33,483.00	1,609.00
G	MG	14	0	0.00	0	29,274.00	0.00
	PU	13	0	0.00	0	32,368.00	0.00
	RU	9	1	11.11	5	41,507.00	2,500.00
	Subtotal:	36	1	2.78	5	103,149.00	2,500.00
Total:		53	2	3.77	6	137,339.00	4,109.00

8 - Cannon

D	2D S15	8	0	0.00	0	11,597.00	0.00
	Subtotal:	8	0	0.00	0	11,597.00	0.00
G	MG	1	0	0.00	0	804.00	0.00
	PU	4	0	0.00	0	6,257.00	0.00
	RU	9	0	0.00	0	50,704.00	0.00
	Subtotal:	14	0	0.00	0	57,765.00	0.00
Total:		22	0	0.00	0	69,362.00	0.00

9 - CARROLL

D	2D S15	10	0	0.00	0	19,746.00	0.00
	Subtotal:	10	0	0.00	0	19,746.00	0.00
G	MG	8	0	0.00	0	18,564.00	0.00
	PU	6	0	0.00	0	9,484.00	0.00
	RU	22	0	0.00	0	81,757.00	0.00
	Subtotal:	36	0	0.00	0	109,805.00	0.00
K	1K	4	0	0.00	0	1,414.00	0.00
	Subtotal:	4	0	0.00	0	1,414.00	0.00
Total:		50	0	0.00	0	130,965.00	0.00

10 - CARTER

AG	100LL	1	0	0.00	0	2,610.00	0.00
	Subtotal:	1	0	0.00	0	2,610.00	0.00
D	2D S15	18	2	11.11	2	40,043.00	2,228.00
	Subtotal:	18	2	11.11	2	40,043.00	2,228.00
G	MG	4	0	0.00	0	11,064.00	0.00

	PU	13	0	0.00	0	29,682.00	0.00
	RU	17	0	0.00	0	62,714.00	0.00
	Subtotal:	34	0	0.00	0	103,460.00	0.00
Total:		53	2	3.77	2	146,113.00	2,228.00

11 - CHEATHAM

BDB

	B6-20 S15	3	1	33.33	1	21,968.00	1,563.00
	Subtotal:	3	1	33.33	1	21,968.00	1,563.00

D

	2D S15	23	2	8.70	2	42,715.00	1,144.00
	Subtotal:	23	2	8.70	2	42,715.00	1,144.00

G

	MG	10	0	0.00	0	30,842.00	0.00
	PU	6	0	0.00	0	9,102.00	0.00
	RU	13	0	0.00	0	31,180.00	0.00
	Subtotal:	29	0	0.00	0	71,124.00	0.00

K

	1K	1	0	0.00	0	852.00	0.00
	Subtotal:	1	0	0.00	0	852.00	0.00

Total:

56	3	5.36	3	136,659.00	2,707.00
----	---	------	---	------------	----------

12 - Chester

D

	2D S15	5	0	0.00	0	11,588.00	0.00
	Subtotal:	5	0	0.00	0	11,588.00	0.00

G

	MG	4	0	0.00	0	8,547.00	0.00
	PU	4	0	0.00	0	6,218.00	0.00
	RU	8	0	0.00	0	21,903.00	0.00
	Subtotal:	16	0	0.00	0	36,668.00	0.00

K

	1K	2	0	0.00	0	1,337.00	0.00
	Subtotal:	2	0	0.00	0	1,337.00	0.00

Total:

23	0	0.00	0	49,593.00	0.00
----	---	------	---	-----------	------

13 - CLAIBORNE

D

	2D S15	11	1	9.09	1	18,211.00	948.00
	Subtotal:	11	1	9.09	1	18,211.00	948.00

FO

	No. 1 FO	1	0	0.00	0	1,542.00	0.00
	Subtotal:	1	0	0.00	0	1,542.00	0.00

G

	MG	10	0	0.00	0	25,493.00	0.00
	PU	9	0	0.00	0	12,660.00	0.00
	RU	10	0	0.00	0	29,544.00	0.00
	Subtotal:	29	0	0.00	0	67,697.00	0.00

Total:		41	1	2.44	1	87,450.00	948.00
14 - Clay							
D							
	2D S15	8	1	12.50	1	9,699.00	451.00
	Subtotal:	8	1	12.50	1	9,699.00	451.00
G							
	MG	2	0	0.00	0	1,050.00	0.00
	PU	5	0	0.00	0	7,476.00	0.00
	RU	8	0	0.00	0	10,694.00	0.00
	Subtotal:	15	0	0.00	0	19,220.00	0.00
Total:		23	1	4.35	1	28,919.00	451.00

15 - COCKE							
BDB							
	B20 S15	1	0	0.00	0	1,500.00	0.00
	Subtotal:	1	0	0.00	0	1,500.00	0.00
D							
	2D S15	18	0	0.00	0	48,691.00	0.00
	2D S500	1	0	0.00	0	9,100.00	0.00
	Subtotal:	19	0	0.00	0	57,791.00	0.00
E85							
	E-85	1	0	0.00	0	2,100.00	0.00
	Subtotal:	1	0	0.00	0	2,100.00	0.00
G							
	MG	5	0	0.00	0	11,250.00	0.00
	PU	5	0	0.00	0	12,850.00	0.00
	RU	33	1	3.03	1	132,150.00	1,100.00
	Subtotal:	43	1	2.33	1	156,250.00	1,100.00
K							
	1K	1	0	0.00	0	825.00	0.00
	Subtotal:	1	0	0.00	0	825.00	0.00
Total:		65	1	1.54	1	218,466.00	1,100.00

16 - COFFEE							
D							
	2D S15	25	0	0.00	0	97,972.00	0.00
	Subtotal:	25	0	0.00	0	97,972.00	0.00
E85							
	E-85	2	0	0.00	0	2,269.00	0.00
	Subtotal:	2	0	0.00	0	2,269.00	0.00
G							
	MG	13	0	0.00	0	34,506.00	0.00
	PU	12	0	0.00	0	24,116.00	0.00
	RU	25	0	0.00	0	121,367.00	0.00
	Subtotal:	50	0	0.00	0	179,989.00	0.00
K							
	1K	1	0	0.00	0	1,122.00	0.00

	Subtotal:	1	0	0.00	0	1,122.00	0.00
	Total:	78	0	0.00	0	281,352.00	0.00
17 - Crockett							
D							
	2D S15	7	0	0.00	0	30,798.00	0.00
	Subtotal:	7	0	0.00	0	30,798.00	0.00
G							
	MG	5	0	0.00	0	7,950.00	0.00
	PU	2	0	0.00	0	4,171.00	0.00
	RU	13	1	7.69	2	49,079.00	3,910.00
	Subtotal:	20	1	5.00	2	61,200.00	3,910.00
	Total:	27	1	3.70	2	91,998.00	3,910.00
18 - CUMBERLAND							
BDB							
	B20 S15	1	0	0.00	0	15,470.00	0.00
	Subtotal:	1	0	0.00	0	15,470.00	0.00
D							
	2D S15	28	1	3.57	1	115,397.00	684.00
	Subtotal:	28	1	3.57	1	115,397.00	684.00
E85							
	E-85	1	0	0.00	0	1,618.00	0.00
	Subtotal:	1	0	0.00	0	1,618.00	0.00
G							
	MG	8	0	0.00	0	22,700.00	0.00
	PU	13	1	7.69	3	28,092.00	2,415.00
	RU	38	0	0.00	0	157,738.00	0.00
	Subtotal:	59	1	1.69	3	208,530.00	2,415.00
	Total:	89	2	2.25	4	341,015.00	3,099.00
19 - DAVIDSON							
BDB							
	B20 S15	6	1	16.67	1	19,671.00	5,540.00
	B20 S500	1	0	0.00	0	2,139.00	0.00
	B6-20 S15	4	2	50.00	2	65,673.00	10,619.00
	B6-20 S500	1	0	0.00	0	1,301.00	0.00
	Subtotal:	12	3	25.00	3	88,784.00	16,159.00
D							
	2D S15	134	11	8.21	11	1,329,111.00	59,654.00
	Subtotal:	134	11	8.21	11	1,329,111.00	59,654.00
DFE							
	E100	2	0	0.00	0	32,800.00	0.00
	Subtotal:	2	0	0.00	0	32,800.00	0.00
E85							
	E-85	13	6	46.15	6	40,790.00	13,090.00
	Subtotal:	13	6	46.15	6	40,790.00	13,090.00
G							

	MG	75	2	2.67	3	477,389.60	7,133.00
	PU	98	2	2.04	2	550,794.00	5,454.00
	PU BS	1	0	0.00	0	301,896.00	0.00
	RU	156	5	3.21	13	1,223,220.00	91,643.00
	RU BS	1	0	0.00	0	359,814.00	0.00
	Subtotal:	331	9	2.72	18	2,913,113.60	104,230.00
K							
	1K	19	0	0.00	0	19,168.00	0.00
	Subtotal:	19	0	0.00	0	19,168.00	0.00
Total:		511	29	5.68	38	4,423,766.60	193,133.00

20 - DECATUR

D							
	2D S15	9	0	0.00	0	18,847.00	0.00
	Subtotal:	9	0	0.00	0	18,847.00	0.00
G							
	MG	9	0	0.00	0	10,623.00	0.00
	PU	5	0	0.00	0	5,303.00	0.00
	RU	13	0	0.00	0	35,746.00	0.00
	Subtotal:	27	0	0.00	0	51,672.00	0.00
K							
	1K	1	0	0.00	0	547.00	0.00
	Subtotal:	1	0	0.00	0	547.00	0.00
Total:		37	0	0.00	0	71,066.00	0.00

21 - Dekalb

D							
	2D S15	8	0	0.00	0	15,028.00	0.00
	Subtotal:	8	0	0.00	0	15,028.00	0.00
G							
	MG	6	0	0.00	0	13,662.00	0.00
	PU	8	0	0.00	0	14,242.00	0.00
	RU	14	0	0.00	0	46,917.00	0.00
	Subtotal:	28	0	0.00	0	74,821.00	0.00
Total:		36	0	0.00	0	89,849.00	0.00

22 - Dickson

BDB							
	B6-20 S15	1	0	0.00	0	3,046.00	0.00
	Subtotal:	1	0	0.00	0	3,046.00	0.00
D							
	2D S15	23	1	4.35	1	60,355.00	943.00
	Subtotal:	23	1	4.35	1	60,355.00	943.00
E85							
	E-85	1	0	0.00	0	3,808.00	0.00
	Subtotal:	1	0	0.00	0	3,808.00	0.00
G							
	MG	13	0	0.00	0	34,638.00	0.00

	PU	11	0	0.00	0	21,757.00	0.00
	RU	22	0	0.00	0	106,230.00	0.00
	Subtotal:	46	0	0.00	0	162,625.00	0.00
K							
	1K	5	1	20.00	2	2,359.00	398.00
	Subtotal:	5	1	20.00	2	2,359.00	398.00
Total:		76	2	2.63	3	232,193.00	1,341.00

23 - Dyer

D							
	2D S15	13	2	15.38	2	45,438.00	2,030.00
	Subtotal:	13	2	15.38	2	45,438.00	2,030.00
G							
	MG	14	1	7.14	1	46,375.00	4,187.00
	PU	14	0	0.00	0	25,180.00	0.00
	RU	28	0	0.00	0	95,478.00	0.00
	Subtotal:	56	1	1.79	1	167,033.00	4,187.00
K							
	1K	1	0	0.00	0	500.00	0.00
	Subtotal:	1	0	0.00	0	500.00	0.00
Total:		70	3	4.29	3	212,971.00	6,217.00

24 - FAYETTE

D							
	2D S15	15	1	6.67	1	68,696.00	1,473.00
	Subtotal:	15	1	6.67	1	68,696.00	1,473.00
G							
	MG	5	0	0.00	0	5,172.00	0.00
	PU	15	1	6.67	1	26,226.00	1,037.00
	RU	14	0	0.00	0	37,377.00	0.00
	Subtotal:	34	1	2.94	1	68,775.00	1,037.00
K							
	1K	3	0	0.00	0	1,354.00	0.00
	Subtotal:	3	0	0.00	0	1,354.00	0.00
Total:		52	2	3.85	2	138,825.00	2,510.00

25 - FENTRESS

D							
	2D S15	9	0	0.00	0	16,869.00	0.00
	Subtotal:	9	0	0.00	0	16,869.00	0.00
G							
	MG	2	0	0.00	0	4,433.00	0.00
	PU	3	0	0.00	0	4,088.00	0.00
	RU	13	1	7.69	2	42,086.00	746.00
	Subtotal:	18	1	5.56	2	50,607.00	746.00
Total:		27	1	3.70	2	67,476.00	746.00

26 - FRANKLIN

D

	2D S15	15	0	0.00	0	31,252.00	0.00
	Subtotal:	15	0	0.00	0	31,252.00	0.00
G							
	MG	6	1	16.67	1	12,381.00	2,024.00
	PU	12	0	0.00	0	18,331.00	0.00
	RU	22	0	0.00	0	81,289.00	0.00
	Subtotal:	40	1	2.50	1	112,001.00	2,024.00
K							
	1K	1	0	0.00	0	664.00	0.00
	Subtotal:	1	0	0.00	0	664.00	0.00
Total:		56	1	1.79	1	143,917.00	2,024.00

27 - GIBSON

D							
	2D S15	15	0	0.00	0	38,833.00	0.00
	Subtotal:	15	0	0.00	0	38,833.00	0.00
G							
	MG	14	0	0.00	0	35,856.00	0.00
	PU	14	1	7.14	3	31,134.00	1,248.00
	RU	16	0	0.00	0	47,058.00	0.00
	Subtotal:	44	1	2.27	3	114,048.00	1,248.00
K							
	1K	2	0	0.00	0	817.00	0.00
	Subtotal:	2	0	0.00	0	817.00	0.00
Total:		61	1	1.64	3	153,698.00	1,248.00

28 - GILES

BDB							
	B20 S15	1	1	100.00	3	460.00	1,380.00
	Subtotal:	1	1	100.00	3	460.00	1,380.00
D							
	2D S15	21	0	0.00	0	98,707.00	0.00
	2D S500	1	0	0.00	0	1,427.00	0.00
	Subtotal:	22	0	0.00	0	100,134.00	0.00
G							
	MG	15	0	0.00	0	57,456.00	0.00
	PU	9	0	0.00	0	25,926.00	0.00
	RU	13	0	0.00	0	52,240.00	0.00
	Subtotal:	37	0	0.00	0	135,622.00	0.00
K							
	1K	6	0	0.00	0	5,827.00	0.00
	Subtotal:	6	0	0.00	0	5,827.00	0.00
Total:		66	1	1.52	3	242,043.00	1,380.00

29 - GRAINGER

D							
	2D S15	11	0	0.00	0	15,489.00	0.00
	Subtotal:	11	0	0.00	0	15,489.00	0.00

G							
	MG	1	0	0.00	0	774.00	0.00
	PU	8	0	0.00	0	8,920.00	0.00
	RU	13	0	0.00	0	30,359.00	0.00
	Subtotal:	22	0	0.00	0	40,053.00	0.00
Total:		33	0	0.00	0	55,542.00	0.00

30 - Greene

AG							
	100LL	1	0	0.00	0	1,200.00	0.00
	Subtotal:	1	0	0.00	0	1,200.00	0.00
BDB							
	B20 S15	1	0	0.00	0	1,000.00	0.00
	Subtotal:	1	0	0.00	0	1,000.00	0.00
D							
	2D S15	48	1	2.08	1	147,293.00	1,700.00
	Subtotal:	48	1	2.08	1	147,293.00	1,700.00
E85							
	E-85	1	0	0.00	0	1,000.00	0.00
	Subtotal:	1	0	0.00	0	1,000.00	0.00
G							
	MG	19	0	0.00	0	42,590.00	0.00
	PU	16	0	0.00	0	35,732.00	0.00
	RU	39	0	0.00	0	189,006.00	0.00
	Subtotal:	74	0	0.00	0	267,328.00	0.00
JF							
	JA	1	0	0.00	0	2,000.00	0.00
	Subtotal:	1	0	0.00	0	2,000.00	0.00
K							
	1K	3	1	33.33	2	2,200.00	1,300.00
	Subtotal:	3	1	33.33	2	2,200.00	1,300.00
Total:		129	2	1.55	3	422,021.00	3,000.00

31 - GRUNDY

D							
	2D S15	7	0	0.00	0	10,084.00	0.00
	Subtotal:	7	0	0.00	0	10,084.00	0.00
G							
	MG	3	0	0.00	0	4,019.00	0.00
	PU	4	0	0.00	0	5,735.00	0.00
	RU	8	0	0.00	0	24,376.00	0.00
	Subtotal:	15	0	0.00	0	34,130.00	0.00
K							
	1K	2	1	50.00	1	522.00	261.00
	Subtotal:	2	1	50.00	1	522.00	261.00
Total:		24	1	4.17	1	44,736.00	261.00

32 - Hamblen

AG	100LL	1	0	0.00	0	5,190.00	0.00
	Subtotal:	1	0	0.00	0	5,190.00	0.00
D	2D S15	25	1	4.00	1	71,319.00	537.00
	Subtotal:	25	1	4.00	1	71,319.00	537.00
G	MG	2	0	0.00	0	2,468.00	0.00
	PU	16	0	0.00	0	37,438.00	0.00
	RU	31	0	0.00	0	142,809.00	0.00
	Subtotal:	49	0	0.00	0	182,715.00	0.00
Total:		75	1	1.33	1	259,224.00	537.00

33 - Hamilton

D	2D S15	84	5	5.95	5	236,783.00	9,168.00
	Subtotal:	84	5	5.95	5	236,783.00	9,168.00
E85	E-85	2	0	0.00	0	3,720.00	0.00
	Subtotal:	2	0	0.00	0	3,720.00	0.00
G	MG	32	0	0.00	0	67,668.00	0.00
	PU	65	2	3.08	2	127,543.00	3,701.00
	RU	114	1	0.88	2	542,238.00	14,286.00
	Subtotal:	211	3	1.42	4	737,449.00	17,987.00
K	1K	11	0	0.00	0	7,069.00	0.00
	Subtotal:	11	0	0.00	0	7,069.00	0.00
Total:		308	8	2.60	9	985,021.00	27,155.00

34 - Hancock

D	2D S15	6	0	0.00	0	8,047.00	0.00
	Subtotal:	6	0	0.00	0	8,047.00	0.00
G	MG	1	0	0.00	0	1,405.00	0.00
	RU	5	0	0.00	0	5,341.00	0.00
	Subtotal:	6	0	0.00	0	6,746.00	0.00
Total:		12	0	0.00	0	14,793.00	0.00

35 - HARDEMAN

D	2D S15	15	0	0.00	0	22,394.00	0.00
	Subtotal:	15	0	0.00	0	22,394.00	0.00
G	MG	6	0	0.00	0	11,244.00	0.00
	PU	14	0	0.00	0	30,135.00	0.00
	RU	21	0	0.00	0	44,353.00	0.00

	Subtotal:	41	0	0.00	0	85,732.00	0.00
K							
	1K	2	0	0.00	0	655.00	0.00
	Subtotal:	2	0	0.00	0	655.00	0.00
Total:		58	0	0.00	0	108,781.00	0.00

36 - HARDIN

D							
	2D S15	14	0	0.00	0	51,620.00	0.00
	Subtotal:	14	0	0.00	0	51,620.00	0.00
G							
	MG	10	1	10.00	2	33,064.00	5,480.00
	PU	11	2	18.18	3	27,443.00	3,843.00
	RU	25	0	0.00	0	84,210.00	0.00
	Subtotal:	46	3	6.52	5	144,717.00	9,323.00
Total:		60	3	5.00	5	196,337.00	9,323.00

37 - HAWKINS

D							
	2D S15	15	0	0.00	0	25,799.00	0.00
	Subtotal:	15	0	0.00	0	25,799.00	0.00
G							
	MG	8	0	0.00	0	22,403.00	0.00
	PU	9	1	11.11	1	15,432.00	602.00
	RU	17	0	0.00	0	59,916.00	0.00
	Subtotal:	34	1	2.94	1	97,751.00	602.00
K							
	1K	2	0	0.00	0	5,226.00	0.00
	Subtotal:	2	0	0.00	0	5,226.00	0.00
Total:		51	1	1.96	1	128,776.00	602.00

38 - HAYWOOD

D							
	2D S15	7	0	0.00	0	27,098.00	0.00
	Subtotal:	7	0	0.00	0	27,098.00	0.00
G							
	MG	9	1	11.11	3	18,027.00	5,067.00
	PU	13	1	7.69	1	18,873.00	2,520.00
	RU	8	1	12.50	2	24,842.00	3,802.00
	Subtotal:	30	3	10.00	6	61,742.00	11,389.00
Total:		37	3	8.11	6	88,840.00	11,389.00

39 - HENDERSON

D							
	2D S15	14	0	0.00	0	57,680.00	0.00
	Subtotal:	14	0	0.00	0	57,680.00	0.00
G							
	MG	6	0	0.00	0	12,892.00	0.00
	PU	11	0	0.00	0	19,279.00	0.00

	RU	12	0	0.00	0	43,131.00	0.00
	Subtotal:	29	0	0.00	0	75,302.00	0.00
K							
	1K	2	0	0.00	0	3,096.00	0.00
	Subtotal:	2	0	0.00	0	3,096.00	0.00
Total:		45	0	0.00	0	136,078.00	0.00

40 - Henry

D							
	2D S15	13	1	7.69	1	32,755.00	485.00
	Subtotal:	13	1	7.69	1	32,755.00	485.00
G							
	MG	7	0	0.00	0	13,282.00	0.00
	PU	12	0	0.00	0	18,788.00	0.00
	RU	24	0	0.00	0	84,574.00	0.00
	Subtotal:	43	0	0.00	0	116,644.00	0.00
K							
	1K	5	0	0.00	0	5,096.00	0.00
	Subtotal:	5	0	0.00	0	5,096.00	0.00
Total:		61	1	1.64	1	154,495.00	485.00

41 - Hickman

D							
	2D S15	7	0	0.00	0	31,126.00	0.00
	Subtotal:	7	0	0.00	0	31,126.00	0.00
G							
	MG	4	0	0.00	0	24,933.30	0.00
	PU	5	0	0.00	0	10,106.00	0.00
	RU	8	0	0.00	0	25,247.00	0.00
	Subtotal:	17	0	0.00	0	60,286.30	0.00
Total:		24	0	0.00	0	91,412.30	0.00

42 - Houston

D							
	2D S15	3	0	0.00	0	4,402.00	0.00
	Subtotal:	3	0	0.00	0	4,402.00	0.00
G							
	MG	2	0	0.00	0	2,191.00	0.00
	RU	4	0	0.00	0	2,757.00	0.00
	Subtotal:	6	0	0.00	0	4,948.00	0.00
Total:		9	0	0.00	0	9,350.00	0.00

43 - HUMPHREYS

D							
	2D S15	16	0	0.00	0	36,469.00	0.00
	Subtotal:	16	0	0.00	0	36,469.00	0.00
G							
	MG	4	0	0.00	0	10,646.00	0.00
	PU	4	0	0.00	0	6,408.00	0.00

	RU	14	0	0.00	0	44,314.00	0.00
	Subtotal:	22	0	0.00	0	61,368.00	0.00
	Total:	38	0	0.00	0	97,837.00	0.00

44 - JACKSON

D

	2D S15	6	0	0.00	0	5,463.00	0.00
	Subtotal:	6	0	0.00	0	5,463.00	0.00

G

	MG	1	0	0.00	0	202.00	0.00
	PU	3	0	0.00	0	2,165.00	0.00
	RU	6	0	0.00	0	18,189.00	0.00
	Subtotal:	10	0	0.00	0	20,556.00	0.00

Total:

16	0	0.00	0	26,019.00	0.00
----	---	------	---	-----------	------

45 - JEFFERSON

D

	2D S15	23	0	0.00	0	152,641.00	0.00
	Subtotal:	23	0	0.00	0	152,641.00	0.00

G

	MG	1	0	0.00	0	2,519.00	0.00
	PU	11	0	0.00	0	40,774.00	0.00
	RU	25	0	0.00	0	141,946.00	0.00
	Subtotal:	37	0	0.00	0	185,239.00	0.00

Total:

60	0	0.00	0	337,880.00	0.00
----	---	------	---	------------	------

46 - JOHNSON

AG

	100LL	1	0	0.00	0	1,702.00	0.00
	Subtotal:	1	0	0.00	0	1,702.00	0.00

D

	2D S15	7	0	0.00	0	14,407.00	0.00
	2D S500	1	0	0.00	0	1,177.00	0.00
	Subtotal:	8	0	0.00	0	15,584.00	0.00

G

	MG	4	0	0.00	0	7,254.00	0.00
	PU	3	1	33.33	1	4,679.00	1,749.00
	RU	5	0	0.00	0	10,461.00	0.00
	Subtotal:	12	1	8.33	1	22,394.00	1,749.00

JF

	JA	1	0	0.00	0	1,163.00	0.00
	Subtotal:	1	0	0.00	0	1,163.00	0.00

K

	1K	2	0	0.00	0	3,505.00	0.00
	Subtotal:	2	0	0.00	0	3,505.00	0.00

Total:

24	1	4.17	1	44,348.00	1,749.00
----	---	------	---	-----------	----------

47 - KNOX

BD

	1 BDDB S15	2	0	0.00	0	627,328.00	0.00
	Subtotal:	2	0	0.00	0	627,328.00	0.00
BDB							
	B20 S15	1	0	0.00	0	55,336.00	0.00
	B6-20 S15	1	1	100.00	1	4,563.00	4,563.00
	Subtotal:	2	1	50.00	1	59,899.00	4,563.00
D							
	2D S15	181	8	4.42	8	13,122,113.00	17,658.00
	2D S500	1	0	0.00	0	367,500.00	0.00
	Subtotal:	182	8	4.40	8	13,489,613.00	17,658.00
DFE							
	E100	14	0	0.00	0	4,245,311.00	0.00
	Subtotal:	14	0	0.00	0	4,245,311.00	0.00
E85							
	E-85	1	0	0.00	0	4,423.00	0.00
	Subtotal:	1	0	0.00	0	4,423.00	0.00
G							
	MG	113	2	1.77	2	340,119.00	1,677.00
	PU	123	2	1.63	4	5,350,909.00	3,411.00
	PU BS	2	0	0.00	0	614,670.00	0.00
	RU	115	2	1.74	3	13,866,009.00	8,058.00
	RU BS	10	0	0.00	0	9,479,815.00	0.00
	Subtotal:	363	6	1.65	9	29,651,522.00	13,146.00
JF							
	JA	2	0	0.00	0	918,776.00	0.00
	Subtotal:	2	0	0.00	0	918,776.00	0.00
K							
	1K	11	0	0.00	0	1,154,642.00	0.00
	Subtotal:	11	0	0.00	0	1,154,642.00	0.00
	Total:	577	15	2.60	18	50,151,514.00	35,367.00

48 - LAKE

D							
	2D S15	1	0	0.00	0	3,207.00	0.00
	Subtotal:	1	0	0.00	0	3,207.00	0.00
G							
	MG	3	0	0.00	0	3,717.00	0.00
	PU	3	0	0.00	0	2,881.00	0.00
	RU	2	0	0.00	0	7,715.00	0.00
	Subtotal:	8	0	0.00	0	14,313.00	0.00
	Total:	9	0	0.00	0	17,520.00	0.00

49 - Lauderdale

D							
	2D S15	9	0	0.00	0	18,608.00	0.00
	Subtotal:	9	0	0.00	0	18,608.00	0.00
G							

	MG	12	0	0.00	0	20,489.00	0.00
	PU	9	1	11.11	1	13,122.00	1,923.00
	RU	16	2	12.50	6	43,189.00	9,082.00
	Subtotal:	37	3	8.11	7	76,800.00	11,005.00
K							
	1K	1	0	0.00	0	526.00	0.00
	Subtotal:	1	0	0.00	0	526.00	0.00
Total:		47	3	6.38	7	95,934.00	11,005.00

50 - LAWRENCE

D							
	2D S15	27	0	0.00	0	50,622.00	0.00
	Subtotal:	27	0	0.00	0	50,622.00	0.00
G							
	MG	16	0	0.00	0	99,145.60	0.00
	PU	15	0	0.00	0	26,929.00	0.00
	RU	21	2	9.52	8	58,653.00	10,290.00
	Subtotal:	52	2	3.85	8	184,727.60	10,290.00
Total:		79	2	2.53	8	235,349.60	10,290.00

51 - Lewis

D							
	2D S15	8	0	0.00	0	18,981.00	0.00
	Subtotal:	8	0	0.00	0	18,981.00	0.00
G							
	MG	4	0	0.00	0	25,660.00	0.00
	PU	6	0	0.00	0	7,435.00	0.00
	RU	6	0	0.00	0	20,043.00	0.00
	Subtotal:	16	0	0.00	0	53,138.00	0.00
K							
	1K	1	0	0.00	0	374.00	0.00
	Subtotal:	1	0	0.00	0	374.00	0.00
Total:		25	0	0.00	0	72,493.00	0.00

52 - Lincoln

D							
	2D S15	15	3	20.00	3	43,284.00	1,706.00
	Subtotal:	15	3	20.00	3	43,284.00	1,706.00
G							
	MG	6	0	0.00	0	8,630.00	0.00
	PU	10	1	10.00	2	14,030.00	2,732.00
	RU	23	0	0.00	0	57,329.00	0.00
	Subtotal:	39	1	2.56	2	79,989.00	2,732.00
K							
	1K	1	0	0.00	0	1,256.00	0.00
	Subtotal:	1	0	0.00	0	1,256.00	0.00
Total:		55	4	7.27	5	124,529.00	4,438.00

53 - LOUDON

D	2D S15	18	1	5.56	1	115,287.00	2,551.00
	Subtotal:	18	1	5.56	1	115,287.00	2,551.00
G	MG	13	1	7.69	1	35,781.00	1,242.00
	PU	5	0	0.00	0	15,256.00	0.00
	RU	23	0	0.00	0	86,932.00	0.00
	Subtotal:	41	1	2.44	1	137,969.00	1,242.00
Total:		59	2	3.39	2	253,256.00	3,793.00

54 - MCMINN

D	2D S15	25	0	0.00	0	63,467.00	0.00
	Subtotal:	25	0	0.00	0	63,467.00	0.00
G	MG	8	0	0.00	0	12,726.00	0.00
	PU	15	0	0.00	0	25,925.00	0.00
	RU	26	0	0.00	0	126,836.00	0.00
	Subtotal:	49	0	0.00	0	165,487.00	0.00
K	1K	1	0	0.00	0	1,117.00	0.00
	Subtotal:	1	0	0.00	0	1,117.00	0.00
Total:		75	0	0.00	0	230,071.00	0.00

55 - McNairy

D	2D S15	9	0	0.00	0	22,850.00	0.00
	Subtotal:	9	0	0.00	0	22,850.00	0.00
G	MG	6	1	16.67	1	14,957.00	2,955.00
	PU	10	0	0.00	0	21,470.00	0.00
	RU	9	1	11.11	2	12,718.00	1,650.00
	Subtotal:	25	2	8.00	3	49,145.00	4,605.00
K	1K	1	0	0.00	0	1,075.00	0.00
	Subtotal:	1	0	0.00	0	1,075.00	0.00
Total:		35	2	5.71	3	73,070.00	4,605.00

56 - MACON

D	2D S15	11	2	18.18	2	32,633.00	3,096.00
	Subtotal:	11	2	18.18	2	32,633.00	3,096.00
G	MG	2	0	0.00	0	4,879.00	0.00
	PU	3	0	0.00	0	4,332.00	0.00
	RU	15	1	6.67	2	52,994.00	2,280.00
	Subtotal:	20	1	5.00	2	62,205.00	2,280.00
K							

1K	1	1	100.00	1	67.00	67.00
Subtotal:	1	1	100.00	1	67.00	67.00
Total:	32	4	12.50	5	94,905.00	5,443.00

57 - MADISON

D

2D S15	31	1	3.23	1	241,442.00	1,081.00
Subtotal:	31	1	3.23	1	241,442.00	1,081.00

G

MG	29	0	0.00	0	71,335.00	0.00
PU	46	1	2.17	2	85,924.00	2,850.00
RU	37	1	2.70	2	265,440.00	31,912.00
Subtotal:	112	2	1.79	4	422,699.00	34,762.00

K

1K	2	0	0.00	0	569.00	0.00
Subtotal:	2	0	0.00	0	569.00	0.00

Total:

145	3	2.07	5	664,710.00	35,843.00
-----	---	------	---	------------	-----------

58 - MARION

D

2D S15	14	2	14.29	3	111,610.00	3,998.00
2D S500	1	0	0.00	0	462.00	0.00
Subtotal:	15	2	13.33	3	112,072.00	3,998.00

G

MG	10	1	10.00	1	22,084.00	1,492.00
PU	5	1	20.00	2	10,243.00	2,222.00
RU	18	0	0.00	0	83,765.00	0.00
Subtotal:	33	2	6.06	3	116,092.00	3,714.00

K

1K	1	0	0.00	0	2,285.00	0.00
Subtotal:	1	0	0.00	0	2,285.00	0.00

Total:

49	4	8.16	6	230,449.00	7,712.00
----	---	------	---	------------	----------

59 - MARSHALL

D

2D S15	13	0	0.00	0	41,238.00	0.00
Subtotal:	13	0	0.00	0	41,238.00	0.00

E85

E-85	1	0	0.00	0	882.00	0.00
Subtotal:	1	0	0.00	0	882.00	0.00

G

MG	5	0	0.00	0	7,701.00	0.00
PU	6	0	0.00	0	13,452.00	0.00
RU	20	1	5.00	2	86,884.00	12,160.00
Subtotal:	31	1	3.23	2	108,037.00	12,160.00

K

1K	3	0	0.00	0	1,793.00	0.00
Subtotal:	3	0	0.00	0	1,793.00	0.00

Total:		48	1	2.08	2	151,950.00	12,160.00
60 - MAURY							
D							
	2D S15	24	1	4.17	1	102,089.00	1,043.00
	Subtotal:	24	1	4.17	1	102,089.00	1,043.00
E85							
	E-85	2	1	50.00	2	9,387.00	11,450.00
	Subtotal:	2	1	50.00	2	9,387.00	11,450.00
G							
	MG	20	0	0.00	0	131,530.00	0.00
	PU	19	0	0.00	0	29,696.00	0.00
	RU	32	1	3.13	2	112,632.00	7,896.00
	Subtotal:	71	1	1.41	2	273,858.00	7,896.00
K							
	1K	5	0	0.00	0	4,995.00	0.00
	Subtotal:	5	0	0.00	0	4,995.00	0.00
Total:		102	3	2.94	5	390,329.00	20,389.00

61 - MEIGS							
D							
	2D S15	5	0	0.00	0	12,415.00	0.00
	Subtotal:	5	0	0.00	0	12,415.00	0.00
G							
	MG	4	0	0.00	0	7,226.00	0.00
	PU	2	0	0.00	0	3,837.00	0.00
	RU	8	0	0.00	0	8,036.00	0.00
	Subtotal:	14	0	0.00	0	19,099.00	0.00
Total:		19	0	0.00	0	31,514.00	0.00

62 - MONROE							
AG							
	100LL	1	0	0.00	0	3,221.00	0.00
	Subtotal:	1	0	0.00	0	3,221.00	0.00
D							
	2D S15	18	0	0.00	0	38,006.00	0.00
	Subtotal:	18	0	0.00	0	38,006.00	0.00
G							
	MG	10	1	10.00	1	16,082.00	1,470.00
	PU	12	0	0.00	0	21,583.00	0.00
	RU	22	0	0.00	0	99,741.00	0.00
	Subtotal:	44	1	2.27	1	137,406.00	1,470.00
JF							
	JA	1	0	0.00	0	4,372.00	0.00
	Subtotal:	1	0	0.00	0	4,372.00	0.00
K							
	1K	4	1	25.00	1	3,488.00	704.00
	Subtotal:	4	1	25.00	1	3,488.00	704.00

Total:		68	2	2.94	2	186,493.00	2,174.00
63 - MONTGOMERY							
BDB							
	B6-20 S15	1	0	0.00	0	1,814.00	0.00
	Subtotal:	1	0	0.00	0	1,814.00	0.00
D							
	2D S15	43	3	6.98	3	144,633.00	2,862.00
	2D S500	1	0	0.00	0	1,419.00	0.00
	Subtotal:	44	3	6.82	3	146,052.00	2,862.00
E85							
	E-85	7	0	0.00	0	17,842.00	0.00
	Subtotal:	7	0	0.00	0	17,842.00	0.00
G							
	MG	27	1	3.70	1	72,385.00	3,478.00
	PU	34	1	2.94	2	82,415.00	4,558.00
	RU	35	1	2.86	1	187,154.00	2,863.00
	Subtotal:	96	3	3.13	4	341,954.00	10,899.00
K							
	1K	8	0	0.00	0	9,853.00	0.00
	Subtotal:	8	0	0.00	0	9,853.00	0.00
Total:		156	6	3.85	7	517,515.00	13,761.00

64 - Moore							
D							
	2D S15	4	0	0.00	0	8,639.00	0.00
	Subtotal:	4	0	0.00	0	8,639.00	0.00
G							
	MG	1	0	0.00	0	914.00	0.00
	PU	1	0	0.00	0	428.00	0.00
	RU	2	0	0.00	0	3,534.00	0.00
	Subtotal:	4	0	0.00	0	4,876.00	0.00
Total:		8	0	0.00	0	13,515.00	0.00

65 - MORGAN							
D							
	2D S15	11	0	0.00	0	13,198.00	0.00
	Subtotal:	11	0	0.00	0	13,198.00	0.00
G							
	MG	3	0	0.00	0	4,245.00	0.00
	PU	3	0	0.00	0	3,043.00	0.00
	RU	13	0	0.00	0	19,448.00	0.00
	Subtotal:	19	0	0.00	0	26,736.00	0.00
Total:		30	0	0.00	0	39,934.00	0.00

66 - OBION							
BDB							
	B6-20 S15	1	1	100.00	1	5,382.00	5,382.00
	Subtotal:	1	1	100.00	1	5,382.00	5,382.00

D	2D S15	11	2	18.18	2	34,482.00	4,363.00
	Subtotal:	11	2	18.18	2	34,482.00	4,363.00
DFE	E100	1	0	0.00	0	650,000.00	0.00
	Subtotal:	1	0	0.00	0	650,000.00	0.00
E85	E-85	1	0	0.00	0	550,000.00	0.00
	Subtotal:	1	0	0.00	0	550,000.00	0.00
G	MG	10	1	10.00	1	25,917.00	3,166.00
	PU	12	1	8.33	3	22,338.00	11,124.00
	RU	14	0	0.00	0	54,261.00	0.00
	Subtotal:	36	2	5.56	4	102,516.00	14,290.00
K	1K	4	0	0.00	0	718.00	0.00
	Subtotal:	4	0	0.00	0	718.00	0.00
Total:		54	5	9.26	7	1,343,098.00	24,035.00

67 - OVERTON

D	2D S15	9	0	0.00	0	10,372.00	0.00
	Subtotal:	9	0	0.00	0	10,372.00	0.00
G	MG	5	0	0.00	0	7,538.00	0.00
	PU	6	1	16.67	5	4,690.00	1,000.00
	RU	17	0	0.00	0	45,341.00	0.00
	Subtotal:	28	1	3.57	5	57,569.00	1,000.00
K	1K	2	0	0.00	0	991.00	0.00
	Subtotal:	2	0	0.00	0	991.00	0.00
Total:		39	1	2.56	5	68,932.00	1,000.00

68 - PERRY

D	2D S15	6	0	0.00	0	8,532.00	0.00
	Subtotal:	6	0	0.00	0	8,532.00	0.00
G	MG	4	0	0.00	0	6,760.00	0.00
	PU	2	0	0.00	0	3,637.00	0.00
	RU	6	0	0.00	0	15,224.00	0.00
	Subtotal:	12	0	0.00	0	25,621.00	0.00
K	1K	1	0	0.00	0	1,242.00	0.00
	Subtotal:	1	0	0.00	0	1,242.00	0.00
Total:		19	0	0.00	0	35,395.00	0.00

69 - PICKETT

D	2D S15	3	0	0.00	0	1,835.00	0.00
	Subtotal:	3	0	0.00	0	1,835.00	0.00
G	MG	2	0	0.00	0	4,511.00	0.00
	PU	3	0	0.00	0	2,681.00	0.00
	RU	5	0	0.00	0	12,042.00	0.00
	Subtotal:	10	0	0.00	0	19,234.00	0.00
Total:		13	0	0.00	0	21,069.00	0.00

70 - Polk

D	2D S15	11	0	0.00	0	22,131.00	0.00
	Subtotal:	11	0	0.00	0	22,131.00	0.00
G	MG	4	0	0.00	0	7,265.00	0.00
	PU	7	0	0.00	0	11,349.00	0.00
	RU	8	0	0.00	0	33,632.00	0.00
	Subtotal:	19	0	0.00	0	52,246.00	0.00
K	1K	1	0	0.00	0	1,279.00	0.00
	Subtotal:	1	0	0.00	0	1,279.00	0.00
Total:		31	0	0.00	0	75,656.00	0.00

71 - PUTNAM

D	2D S15	36	4	11.11	5	122,294.00	7,101.00
	Subtotal:	36	4	11.11	5	122,294.00	7,101.00
G	MG	10	0	0.00	0	26,100.00	0.00
	PU	22	1	4.55	2	34,440.00	1,076.00
	RU	40	2	5.00	4	177,846.00	9,737.00
	Subtotal:	72	3	4.17	6	238,386.00	10,813.00
K	1K	2	0	0.00	0	3,308.00	0.00
	Subtotal:	2	0	0.00	0	3,308.00	0.00
Total:		110	7	6.36	11	363,988.00	17,914.00

72 - Rhea

AG	100LL	1	0	0.00	0	2,914.00	0.00
	Subtotal:	1	0	0.00	0	2,914.00	0.00
D	2D S15	18	0	0.00	0	42,632.00	0.00
	Subtotal:	18	0	0.00	0	42,632.00	0.00
G	MG	8	0	0.00	0	12,728.00	0.00
	PU	6	0	0.00	0	10,955.00	0.00

	RU	19	0	0.00	0	62,016.00	0.00
	Subtotal:	33	0	0.00	0	85,699.00	0.00
JF							
	JA	1	0	0.00	0	2,991.00	0.00
	Subtotal:	1	0	0.00	0	2,991.00	0.00
Total:		53	0	0.00	0	134,236.00	0.00

73 - ROANE

D							
	2D S15	14	0	0.00	0	32,399.00	0.00
	Subtotal:	14	0	0.00	0	32,399.00	0.00
E85							
	E-85	1	0	0.00	0	1,094.00	0.00
	Subtotal:	1	0	0.00	0	1,094.00	0.00
G							
	MG	13	0	0.00	0	34,247.00	0.00
	PU	11	0	0.00	0	18,333.00	0.00
	RU	13	0	0.00	0	43,018.00	0.00
	Subtotal:	37	0	0.00	0	95,598.00	0.00
Total:		52	0	0.00	0	129,091.00	0.00

74 - ROBERTSON

BDB							
	B6-20 S15	1	1	100.00	1	7,802.00	7,802.00
	Subtotal:	1	1	100.00	1	7,802.00	7,802.00
D							
	2D S15	25	0	0.00	0	96,882.00	0.00
	Subtotal:	25	0	0.00	0	96,882.00	0.00
E85							
	E-85	1	0	0.00	0	3,557.00	0.00
	Subtotal:	1	0	0.00	0	3,557.00	0.00
G							
	MG	13	0	0.00	0	50,619.00	0.00
	PU	13	0	0.00	0	34,367.00	0.00
	RU	23	1	4.35	2	85,096.00	15,184.00
	Subtotal:	49	1	2.04	2	170,082.00	15,184.00
K							
	1K	10	0	0.00	0	7,050.00	0.00
	Subtotal:	10	0	0.00	0	7,050.00	0.00
Total:		86	2	2.33	3	285,373.00	22,986.00

75 - Rutherford

BDB							
	B6-20 S15	3	3	100.00	3	14,523.00	14,523.00
	Subtotal:	3	3	100.00	3	14,523.00	14,523.00
D							
	2D S15	70	4	5.71	4	470,757.00	20,181.00
	Subtotal:	70	4	5.71	4	470,757.00	20,181.00

E85

E-85	7	2	28.57	2	18,695.00	4,767.00
Subtotal:	7	2	28.57	2	18,695.00	4,767.00
G						
MG	7	0	0.00	0	17,959.00	0.00
PU	28	1	3.57	2	67,028.00	3,828.00
RU	95	1	1.05	1	670,179.00	7,996.00
Subtotal:	130	2	1.54	3	755,166.00	11,824.00
K						
1K	8	0	0.00	0	6,640.00	0.00
Subtotal:	8	0	0.00	0	6,640.00	0.00
Total:	218	11	5.05	12	1,265,781.00	51,295.00

76 - SCOTT

D

2D S15	8	3	37.50	3	20,926.00	5,593.00
Subtotal:	8	3	37.50	3	20,926.00	5,593.00

G

MG	7	0	0.00	0	17,817.00	0.00
PU	5	1	20.00	1	8,686.00	2,022.00
RU	12	0	0.00	0	43,351.00	0.00
Subtotal:	24	1	4.17	1	69,854.00	2,022.00

Total:

32 4 12.50 4 90,780.00 7,615.00

77 - SEQUATCHIE

D

2D S15	5	0	0.00	0	8,560.00	0.00
Subtotal:	5	0	0.00	0	8,560.00	0.00

G

MG	4	0	0.00	0	3,964.00	0.00
PU	2	0	0.00	0	2,354.00	0.00
RU	4	0	0.00	0	10,830.00	0.00
Subtotal:	10	0	0.00	0	17,148.00	0.00

K

1K	1	0	0.00	0	223.00	0.00
Subtotal:	1	0	0.00	0	223.00	0.00

Total:

16 0 0.00 0 25,931.00 0.00

78 - SEVIER

D

2D S15	51	0	0.00	0	111,052.00	0.00
Subtotal:	51	0	0.00	0	111,052.00	0.00

G

MG	18	0	0.00	0	59,450.00	0.00
PU	25	0	0.00	0	64,927.00	0.00
RU	59	2	3.39	2	428,920.00	4,750.00
Subtotal:	102	2	1.96	2	553,297.00	4,750.00

K

	1K	4	0	0.00	0	2,600.00	0.00
	Subtotal:	4	0	0.00	0	2,600.00	0.00
Total:		157	2	1.27	2	666,949.00	4,750.00

79 - SHELBY

BD

	1 BDBS S15	1	0	0.00	0	25,000.00	0.00
	Subtotal:	1	0	0.00	0	25,000.00	0.00

D

	2D S15	118	8	6.78	9	491,061.00	16,359.00
	Subtotal:	118	8	6.78	9	491,061.00	16,359.00

G

	MG	194	7	3.61	7	497,366.00	9,938.00
	PU	236	11	4.66	18	526,128.00	29,281.00
	RU	222	5	2.25	8	1,374,517.00	27,764.00
	Subtotal:	652	23	3.53	33	2,398,011.00	66,983.00

K

	1K	3	0	0.00	0	2,649.00	0.00
	Subtotal:	3	0	0.00	0	2,649.00	0.00

Total:

		774	31	4.01	42	2,916,721.00	83,342.00
--	--	-----	----	------	----	--------------	-----------

80 - SMITH

D

	2D S15	12	2	16.67	2	67,961.00	4,243.00
	Subtotal:	12	2	16.67	2	67,961.00	4,243.00

G

	MG	2	0	0.00	0	4,553.00	0.00
	PU	5	1	20.00	2	9,160.00	2,078.00
	RU	16	0	0.00	0	56,194.00	0.00
	Subtotal:	23	1	4.35	2	69,907.00	2,078.00

Total:

		35	3	8.57	4	137,868.00	6,321.00
--	--	----	---	------	---	------------	----------

81 - STEWART

D

	2D S15	11	0	0.00	0	13,327.00	0.00
	2D S500	1	0	0.00	0	1,852.00	0.00
	Subtotal:	12	0	0.00	0	15,179.00	0.00

G

	MG	6	0	0.00	0	7,802.00	0.00
	PU	3	1	33.33	1	1,757.00	170.00
	RU	12	1	8.33	3	9,331.00	783.00
	Subtotal:	21	2	9.52	4	18,890.00	953.00

K

	1K	1	0	0.00	0	454.00	0.00
	Subtotal:	1	0	0.00	0	454.00	0.00

Total:

		34	2	5.88	4	34,523.00	953.00
--	--	----	---	------	---	-----------	--------

82 - SULLIVAN

D

	2D S15	51	2	3.92	2	136,266.00	1,992.00
	Subtotal:	51	2	3.92	2	136,266.00	1,992.00
G							
	MG	27	1	3.70	3	80,153.00	6,024.00
	PU	28	0	0.00	0	85,787.00	0.00
	RU	49	3	6.12	7	255,757.00	7,721.00
	Subtotal:	104	4	3.85	10	421,697.00	13,745.00
K							
	1K	6	0	0.00	0	6,699.00	0.00
	Subtotal:	6	0	0.00	0	6,699.00	0.00
Total:		161	6	3.73	12	564,662.00	15,737.00

83 - SUMNER

	AG						
	100LL	1	0	0.00	0	2,610.00	0.00
	Subtotal:	1	0	0.00	0	2,610.00	0.00
	BDB						
	B20 S15	1	1	100.00	1	1,074.00	1,074.00
	Subtotal:	1	1	100.00	1	1,074.00	1,074.00
	D						
	2D S15	55	8	14.55	8	126,695.00	13,018.00
	Subtotal:	55	8	14.55	8	126,695.00	13,018.00
	E85						
	E-85	3	2	66.67	2	5,071.00	3,135.00
	Subtotal:	3	2	66.67	2	5,071.00	3,135.00
	G						
	MG	39	1	2.56	1	69,339.00	4,072.00
	PU	18	3	16.67	4	33,208.00	1,825.00
	RU	50	2	4.00	4	225,431.00	26,184.00
	Subtotal:	107	6	5.61	9	327,978.00	32,081.00
	K						
	1K	4	0	0.00	0	6,336.00	0.00
	Subtotal:	4	0	0.00	0	6,336.00	0.00
Total:		171	17	9.94	20	469,764.00	49,308.00

84 - TIPTON

	D						
	2D S15	17	0	0.00	0	43,149.00	0.00
	Subtotal:	17	0	0.00	0	43,149.00	0.00
	G						
	MG	14	0	0.00	0	29,591.00	0.00
	PU	20	2	10.00	2	39,997.00	1,494.00
	RU	15	0	0.00	0	64,600.00	0.00
	Subtotal:	49	2	4.08	2	134,188.00	1,494.00
	K						
	1K	2	0	0.00	0	924.00	0.00
	Subtotal:	2	0	0.00	0	924.00	0.00

Total:		68	2	2.94	2	178,261.00	1,494.00
85 - TROUSDALE							
D							
	2D S15	3	1	33.33	1	9,081.00	3,850.00
	Subtotal:	3	1	33.33	1	9,081.00	3,850.00
G							
	MG	2	0	0.00	0	4,399.00	0.00
	PU	1	0	0.00	0	2,241.00	0.00
	RU	3	1	33.33	2	26,153.00	19,238.00
	Subtotal:	6	1	16.67	2	32,793.00	19,238.00
K							
	1K	1	0	0.00	0	1,003.00	0.00
	Subtotal:	1	0	0.00	0	1,003.00	0.00
Total:		10	2	20.00	3	42,877.00	23,088.00
86 - UNICOI							
D							
	2D S15	5	0	0.00	0	14,872.00	0.00
	Subtotal:	5	0	0.00	0	14,872.00	0.00
G							
	MG	2	0	0.00	0	5,181.00	0.00
	PU	4	0	0.00	0	10,132.00	0.00
	RU	4	0	0.00	0	9,596.00	0.00
	Subtotal:	10	0	0.00	0	24,909.00	0.00
Total:		15	0	0.00	0	39,781.00	0.00
87 - UNION							
D							
	2D S15	10	0	0.00	0	17,658.00	0.00
	Subtotal:	10	0	0.00	0	17,658.00	0.00
G							
	MG	6	0	0.00	0	19,647.00	0.00
	PU	10	0	0.00	0	19,112.00	0.00
	RU	5	0	0.00	0	11,369.00	0.00
	Subtotal:	21	0	0.00	0	50,128.00	0.00
Total:		31	0	0.00	0	67,786.00	0.00
88 - VAN BUREN							
D							
	2D S15	3	0	0.00	0	2,586.00	0.00
	Subtotal:	3	0	0.00	0	2,586.00	0.00
G							
	MG	1	0	0.00	0	1,400.00	0.00
	PU	2	2	100.00	3	2,485.00	3,622.00
	RU	5	1	20.00	2	13,531.00	4,998.00
	Subtotal:	8	3	37.50	5	17,416.00	8,620.00
Total:		11	3	27.27	5	20,002.00	8,620.00
89 - WARREN							

D							
	2D S15	17	0	0.00	0	40,271.00	0.00
	2D S500	1	0	0.00	0	1,343.00	0.00
	Subtotal:	18	0	0.00	0	41,614.00	0.00
G							
	MG	13	0	0.00	0	33,638.00	0.00
	PU	7	0	0.00	0	15,759.00	0.00
	RU	21	0	0.00	0	64,640.00	0.00
	Subtotal:	41	0	0.00	0	114,037.00	0.00
Total:		59	0	0.00	0	155,651.00	0.00

90 - Washington

D							
	2D S15	27	0	0.00	0	68,449.00	0.00
	Subtotal:	27	0	0.00	0	68,449.00	0.00
G							
	MG	19	0	0.00	0	47,753.00	0.00
	PU	21	0	0.00	0	129,394.00	0.00
	RU	23	1	4.35	1	86,159.00	2,071.00
	Subtotal:	63	1	1.59	1	263,306.00	2,071.00
K							
	1K	5	0	0.00	0	6,961.00	0.00
	Subtotal:	5	0	0.00	0	6,961.00	0.00
Total:		95	1	1.05	1	338,716.00	2,071.00

91 - WAYNE

D							
	2D S15	12	0	0.00	0	23,194.00	0.00
	Subtotal:	12	0	0.00	0	23,194.00	0.00
G							
	MG	7	0	0.00	0	36,621.00	0.00
	PU	4	1	25.00	2	4,686.00	2,304.00
	RU	12	0	0.00	0	29,111.00	0.00
	Subtotal:	23	1	4.35	2	70,418.00	2,304.00
Total:		35	1	2.86	2	93,612.00	2,304.00

92 - WEAKLEY

BDB

	B20 S15	1	1	100.00	1	548.00	548.00
	Subtotal:	1	1	100.00	1	548.00	548.00

D

	2D S15	14	2	14.29	2	27,155.00	1,963.00
	Subtotal:	14	2	14.29	2	27,155.00	1,963.00

E85

	E-85	1	1	100.00	2	548.00	1,096.00
	Subtotal:	1	1	100.00	2	548.00	1,096.00

G

	MG	6	0	0.00	0	19,874.00	0.00
--	----	---	---	------	---	-----------	------

	PU	3	0	0.00	0	5,035.00	0.00
	RU	21	1	4.76	2	87,379.00	0.00
	Subtotal:	30	1	3.33	2	112,288.00	0.00
K							
	1K	1	0	0.00	0	400.00	0.00
	Subtotal:	1	0	0.00	0	400.00	0.00
Total:		47	5	10.64	7	140,939.00	3,607.00

93 - WHITE

D							
	2D S15	12	2	16.67	2	23,998.00	3,096.00
	Subtotal:	12	2	16.67	2	23,998.00	3,096.00
G							
	MG	9	0	0.00	0	19,662.00	0.00
	PU	5	0	0.00	0	6,605.00	0.00
	RU	19	0	0.00	0	73,880.00	0.00
	Subtotal:	33	0	0.00	0	100,147.00	0.00
K							
	1K	1	0	0.00	0	1,011.00	0.00
	Subtotal:	1	0	0.00	0	1,011.00	0.00
Total:		46	2	4.35	2	125,156.00	3,096.00

94 - WILLIAMSON

BDB							
	B20 S15	3	1	33.33	2	5,837.00	5,046.00
	Subtotal:	3	1	33.33	2	5,837.00	5,046.00
D							
	2D S15	38	5	13.16	5	203,696.00	50,813.00
	Subtotal:	38	5	13.16	5	203,696.00	50,813.00
E85							
	E-85	4	0	0.00	0	18,601.00	0.00
	Subtotal:	4	0	0.00	0	18,601.00	0.00
G							
	MG	4	0	0.00	0	16,422.00	0.00
	PU	23	1	4.35	1	75,437.00	530.00
	RU	50	2	4.00	3	310,362.00	20,254.00
	Subtotal:	77	3	3.90	4	402,221.00	20,784.00
K							
	1K	2	0	0.00	0	1,251.00	0.00
	Subtotal:	2	0	0.00	0	1,251.00	0.00
Total:		124	9	7.26	11	631,606.00	76,643.00

95 - WILSON

BDB							
	B6-20 S15	1	0	0.00	0	2,991.00	0.00
	Subtotal:	1	0	0.00	0	2,991.00	0.00
D							
	2D S15	31	0	0.00	0	133,227.00	0.00

	Subtotal:	31	0	0.00	0	133,227.00	0.00
E85							
	E-85	2	0	0.00	0	1,654.00	0.00
	Subtotal:	2	0	0.00	0	1,654.00	0.00
G							
	MG	17	0	0.00	0	64,900.00	0.00
	PU	17	0	0.00	0	44,182.00	0.00
	RU	34	0	0.00	0	207,235.00	0.00
	Subtotal:	68	0	0.00	0	316,317.00	0.00
K							
	1K	2	0	0.00	0	3,284.00	0.00
	Subtotal:	2	0	0.00	0	3,284.00	0.00
Total:		104	0	0.00	0	457,473.00	0.00

KEROSENE AND MOTOR FUEL QUALITY ENFORCEMENT SUMMARY

7/1/2013 – 6/30/2014

Civil Penalties:

Total Penalties Issued:	156
Amount Issued:	\$101,994
Total Collections:	\$84,308

Product Stop Sales:

Total Stop Sales:	274
Total Gallons Stop Sold:	2,309,153

Administrative Hearings

There were no administrative hearings held in FY'14. All cases were settled without a formal legal hearing